

**A PORTION OF MONTECITO AT SUMMERLIN VILLAGE 23B  
(AMENDED)**

Recorded in Book 148 Page 032 of Plats

---

Fire Department District Map Numbers:

02312-62 02312-71 02312-72

---

<u>Block</u>	<u>Lot</u>	<u>Address</u>
1	34A	289 BESAME CT
	35A	293
	36A	294
	37A	290
	38A	286
	39A	282
	40A	278
	41A	274
	42A	270
	43A	266
	44A	262
	45A	258
	46A	254
	47A	250
	50A	12213 TEMPESTAD AVE
	52A	253 LINDURA CT
	53A	257
	54A	261
	55A	265
	56A	269
	57A	273
	58A	277
	59A	281
	60A	285
	61A	289
	62A	293
	63A	297
	64A	298
	65A	294

**A PORTION OF MONTECITO AT SUMMERLIN VILLAGE 23B  
(AMENDED)**

Recorded in Book 148 Page 032 of Plats

---

Fire Department District Map Numbers:

02312-62 02312-71 02312-72

---

<u>Block</u>	<u>Lot</u>	<u>Address</u>
1	66A	290 LINDURA CT
	67A	286
	68A	282
	69A	274
	71A	251 EVANTE ST

Jim Marshall, Senior Planner



**AMENDED FINAL MAP OF A PORTION OF  
MONTECITO AT SUMMERLIN VILLAGE 23B  
A COMMON INTEREST COMMUNITY**

LOTS 34 THROUGH 47, 50, 52 THROUGH 71, TOGETHER WITH COMMON ELEMENTS "C", "D", AND "H"  
AS SHOWN ON THAT CERTAIN MAP ON FILE IN THE CLARK COUNTY RECORDER'S OFFICE IN BOOK 147, PAGE 23 OF PLATS,  
SITUATE IN THE WEST HALF (W 1/2) OF SECTION 27, TOWNSHIP 20 SOUTH, RANGE 59 EAST, M.D.M.,  
CITY OF LAS VEGAS, CLARK COUNTY, NEVADA.

**OWNER'S CERTIFICATE AND DEDICATION**

TOLL SOUTH L.V.L.L.C. A NEVADA LIMITED LIABILITY COMPANY  
DOES HEREBY CERTIFY THAT WE ARE THE OWNERS OF THE PARCEL OF LAND THAT IS  
SHOWN UPON THE PLAT OF:

AMENDED FINAL MAP OF A PORTION OF  
MONTECITO AT SUMMERLIN VILLAGE 23B

AND DO HEREBY CONSENT TO THE PREPARATION AND RECORDATION OF THIS MAP AND DO  
HEREBY OFFER AND DEDICATE TO THE CITY OF LAS VEGAS ALL THE STREETS (EXCEPT  
PRIVATE STREETS) AND THE OTHER PUBLIC RIGHTS-OF-WAY AND PLACES AS INDICATED AND  
OUTLINE HEREON, FOR THE USE OF THE PUBLIC; AND GRANT TO THE CITY OF LAS VEGAS  
EASEMENTS, AS INDICATED AND OUTLINE HEREON FOR THE USE OF THE PUBLIC, NO PART OF  
THE PARCELS MARKED "NOT A PART OF THIS SURVEY" IS OFFERED FOR DEDICATION.

FURTHER, THE UNDERSIGNED OWNERS HEREBY GRANTS AND CONVEYS TO THE CITY OF LAS  
VEGAS AND TO ITS SUCCESSORS AND ASSIGNS A FIVE-FOOT WIDE EASEMENT ADJACENT TO  
ALL PROPERTY LINES WHERE LOTS OR COMMON AREAS ADJUT PUBLIC STREETS FOR PURPOSES  
OF PLACING PUBLIC FIRE HYDRANTS, PUBLIC STREETLIGHTS, TRAFFIC SIGNALS, CONDUITS AND  
APPURTENANCES, AND AN ADDITIONAL EASEMENT OF UP TO TWO FEET IN RADIUS FROM EACH  
FIRE HYDRANT, STREETLIGHT, TRAFFIC SIGNAL, CONDUIT AND APPURTENANCE, TO EXTEND  
BEYOND THE FIVE-FOOT EASEMENT IF NECESSARY, TOGETHER WITH THE RIGHT OF INGRESS TO AND  
EGRESS FROM THESE EASEMENTS.

FURTHERMORE, THE UNDERSIGNED OWNERS DO HEREBY GRANT AND CONVEY TO NEVADA POWER  
COMPANY, A NEVADA CORPORATION 4/5/8 BY ENERGY, CENTRAL TELEPHONE COMPANY  
4/5/8 BY CENTRAL TELEPHONE COMPANY, LAS VEGAS VALLEY WATER DISTRICT  
AND COX COMMUNICATIONS LAS VEGAS, INC. JOINTLY AND SEVERALLY AND TO THEIR  
SUCCESSORS AND ASSIGNS, AN EASEMENT OVER ALL AREAS DESIGNATED AS "PRIVATE  
STREETS" AND "COMMON ELEMENTS" AND A THREE-FOOT WIDE UTILITY EASEMENT (U.E.)  
ADJUTING ALL SIDE PROPERTY LINES AND ALONG ALL UNDERGROUNDS SERVICES TO METER  
PANELS, ALSO AN EASEMENT CONTIGUOUS TO, AND/OR BACK OF, PUBLIC OR PRIVATE STREETS  
FOR ABOVE DEDICATED TRANSFORMERS, AND TELEPHONE EQUIPMENT PADS AND FOR THE  
CONSTRUCTION, MAINTENANCE, OPERATION, FINAL REMOVAL, AND/OR ABANDONMENT OF  
UNDERGROUND DISTRIBUTION LINES AND APPURTENANCES, WHERE NO SIDEWALK EXISTS, THE  
WIDTH OF SAID EASEMENT SHALL BE DEFINED BY A LINE RUNNING PARALLEL TO AND TEN FEET  
DISTANT, MEASURED AT RIGHT ANGLES FROM THE BACK OF CURB IN SAID PUBLIC OR  
PRIVATE STREET, WHERE SIDEWALK EXISTS, THE WIDTH OF SAID EASEMENT SHALL BE DEFINED  
BY A LINE RUNNING PARALLEL TO AND FIVE FEET DISTANT, MEASURED AT RIGHT ANGLES FROM  
THE BACK OF ANY STREET FRONTAGE SIDEWALK, ALSO AN ADDITIONAL TWO FEET ADJUT  
TRANSFORMER PADS AND TELEPHONE EQUIPMENT PADS WITHIN THE PLATTED LANDS FOR THE  
CONSTRUCTION, MAINTENANCE, OPERATION, FINAL REMOVAL AND/OR ABANDONMENT OF  
UNDERGROUND POWER, TELEPHONE, GAS LINES, WATER LINES, CABLE TV, AND  
APPURTENANCES, TOGETHER WITH THE RIGHT OF INGRESS AND EGRESS THEREON.

TOLL SOUTH L.V.L.L.C. A NEVADA LIMITED LIABILITY COMPANY

BY: David P. Rankin 11-12-14  
TOLL SOUTH L.V.L.L.C. A NEVADA LIMITED LIABILITY COMPANY

**ACKNOWLEDGMENT**

STATE OF NEVADA }  
COUNTY OF CLARK } ss

THIS INSTRUMENT WAS ACKNOWLEDGED BEFORE ME ON NOV 12<sup>TH</sup> 2014 BY  
TOLL SOUTH L.V.L.L.C. A NEVADA LIMITED LIABILITY COMPANY.

Catrina P. DeLeonard  
NOTARY PUBLIC IN AND FOR SAID COUNTY AND STATE  
BY APPOINTMENT EXPIRES 11/30/17

**UTILITY AND AGENCY APPROVAL**

BY THEIR SIGNATURES BELOW, THE NAMED UTILITY COMPANIES DO HEREBY RELINQUISH ALL  
UTILITY EASEMENTS WITHIN THE BOUNDARIES OF THE HEREIN PLATTED LANDS AS GRANTED PER  
THE RECORDED PLATS ON FILE IN THE CLARK COUNTY RECORDER'S OFFICE IN BOOK 147, PAGE 23  
OF PLATS. THESE EASEMENTS ARE RELINQUISHED IN FAVOR OF THE EASEMENTS GRANTED,  
DELINEATED AND APPROVED HEREON.

Las Vegas Valley Water District - MICHAEL J. SHARPE 11/13/14 DATE  
Southwest Gas Corporation - Chris Gonus 11/2/14 DATE  
NEVADA POWER COMPANY - RANDAL CAGLE 10/1/14 DATE  
Central Telephone Company 4/5/8 CenturyLink - JESSIE HURLEY 11-9-14 DATE  
Cox Communications Las Vegas, Inc. - MARGARET W. JO 10-16-14 DATE

**SURVEYOR'S CERTIFICATE**

I, ROBERT J. FOLEY, A PROFESSIONAL LAND SURVEYOR LICENSED IN THE STATE OF NEVADA, AS AN AGENT  
FOR TRI-CORE SURVEYING, LLC, CERTIFY THAT:

1. THIS PLAT REPRESENTS THE RESULTS OF A SURVEY CONDUCTED UNDER MY DIRECT SUPERVISION AT THE  
INSTANCE OF TOLL SOUTH L.V.L.L.C. A NEVADA LIMITED LIABILITY COMPANY
2. LANDS SURVEYED LIE WITHIN THE WEST HALF (W 1/2) OF SECTION 27, TOWNSHIP 20 SOUTH, RANGE 59  
EAST, M.D.M., CITY OF LAS VEGAS, CLARK COUNTY, NEVADA AND THE SURVEY WAS COMPLETED ON JULY 9,  
2013.
3. THIS PLAT COMPLIES WITH THE APPLICABLE STATE STATUTES AND ANY LOCAL ORDINANCES IN EFFECT ON  
THE DATE THAT THE GOVERNING BODY GAVE ITS FINAL APPROVAL.
4. THE MONUMENTS DEPICTED ON THE PLAT WILL BE OF THE CHARACTER SHOWN AND OCCUPY THE POSITIONS  
INDICATED BY 0.21115026 AND AN APPROPRIATE FINANCIAL GUARANTEE WILL BE POSTED WITH  
THE GOVERNING BODY BEFORE RECORDATION TO ASSURE THE INSTALLATION OF THE MONUMENTS.



ROBERT J. FOLEY  
PROFESSIONAL LAND SURVEYOR  
NEVADA LICENSE NO. 17448

**LEGAL DESCRIPTION**

LOTS 34 THROUGH 47, 50, 52 THROUGH 71, TOGETHER WITH COMMON ELEMENTS "C", "D", AND "H" AS SHOWN  
ON THAT CERTAIN MAP ON FILE IN THE CLARK COUNTY RECORDER'S OFFICE IN BOOK 147, PAGE 23 OF PLATS,  
SITUATE IN THE WEST HALF (W 1/2) OF SECTION 27, TOWNSHIP 20 SOUTH, RANGE 59 EAST, M.D.M., CITY OF  
LAS VEGAS, CLARK COUNTY, NEVADA.

CONTAINING 12.50 ACRES.

**BASIS OF BEARINGS**

NORTH 89°46'49" EAST, BEING THE BEARING OF THE NORTH LINE OF SECTION 27, TOWNSHIP 20 SOUTH, RANGE  
59 EAST, M.D.M., CITY OF LAS VEGAS, CLARK COUNTY, NEVADA AS SHOWN BY MAP THEREOF ON FILE IN THE  
COUNTY RECORDER'S OFFICE, CLARK COUNTY, NEVADA IN FILE 91, PAGE 28 OF PARCEL MAPS.

**PURPOSE OF AMENDMENT**

REVISE THE STREET ALIGNMENT ALONG WITH ALL LOTS AFFECTED BY THE CHANGES MADE IN THE STREET  
ALIGNMENT.

**LAS VEGAS VALLEY WATER DISTRICT NOTE**

MAINTENANCE WORK ON FACILITIES LOCATED WITHIN UTILITY EASEMENTS GRANTED BY THIS MAP AND OWNED  
AND/OR OPERATED BY THE UTILITIES (BOTH FRANCHISE AND MUNICIPAL) MAY INCLUDE THE PLACEMENT OF AN  
ASPHALT OR CONCRETE PATCH AS APPLICABLE. NO EFFORT WILL BE MADE TO REPLICATE OR MATCH ANY  
DECORATIVE SURFACES, LANDSCAPE FEATURES, OR ANY OTHER IMPROVEMENTS DISTURBED AS A RESULT OF  
THE MAINTENANCE ACTIVITIES OF THE UTILITIES OR THEIR AUTHORIZED REPRESENTATIVES.

ALL COMMON AREAS AND UTILITY EASEMENTS INDICATED HEREON AS "COMMON ELEMENTS" OR "UTILITY  
EASEMENTS" ARE TO BE PRIMARILY MAINTAINED BY THE OWNER'S ASSOCIATION (OR PROPERTY OWNER IF NO  
OWNER'S ASSOCIATION IS TO BE FORMED).

**CERTIFICATE OF EASEMENT RECIPIENTS**

WE, THE HEREIN NAMED EASEMENT RECIPIENTS APPROVE THE GRANT OF THE DESIGNATED  
EASEMENTS.

David P. Rankin 12-9-14 DATE  
CITY ENGINEER  
CITY OF LAS VEGAS ARAC PAVALA PG 49029

**CITY SURVEYOR'S CERTIFICATE**

I, ALAN R. RENDL, CITY SURVEYOR OF THE CITY OF LAS VEGAS, DO HEREBY CERTIFY THAT I  
HAVE EXAMINED THE FINAL SURVEY MAP OF:

AMENDED FINAL MAP OF A PORTION OF  
MONTECITO AT SUMMERLIN VILLAGE 23B

AND AM SATISFIED THAT THE MAP IS TECHNICALLY CORRECT. MONUMENTS HAVE NOT BEEN  
SET, BUT AN APPROPRIATE FINANCIAL GUARANTEE HAS BEEN DEPOSITED TO GUARANTEE  
THEIR SETTING ON OR BEFORE 11/12/2014

Alan R. Rendl 12-22-14 DATE  
ALAN R. RENDL, P.L.S.  
CITY OF LAS VEGAS SURVEYOR  
NEVADA LICENSE NO. 12469



**DISTRICT BOARD OF HEALTH CERTIFICATE**

THIS FINAL MAP IS APPROVED BY THE SOUTHERN NEVADA HEALTH DISTRICT. THIS APPROVAL  
CONCERNS SEWER DISPOSAL, WATER POLLUTION, WATER QUALITY, AND WATER SUPPLY  
FACILITIES AND IS PRECEDENTS UPON PLANS FOR A PUBLIC WATER SUPPLY AND A COMMUNITY  
SYSTEM FOR DISPOSAL OF SEWAGE.

Walter B. Ross 11/27/2014 DATE  
SOUTHERN NEVADA HEALTH DISTRICT  
Walter B. Ross

**DIVISION OF WATER RESOURCES CERTIFICATE**

THIS FINAL MAP IS APPROVED BY THE DIVISION OF WATER RESOURCES OF THE DEPARTMENT  
OF CONSERVATION AND NATURAL RESOURCES CONCERNING WATER QUANTITY SUBJECT TO THE  
REVIEW OF APPROVAL ON FILE IN THIS OFFICE.

David P. Rankin 11/24/14 DATE  
DIVISION OF WATER RESOURCES  
David P. Rankin, P.E.

**CERTIFICATE OF DIRECTOR OF PLANNING APPROVAL**

I CERTIFY THAT THIS FINAL MAP SUBSTANTIALLY COMPLIES WITH THE TENTATIVE MAP AND ANY  
APPROVED ALTERATIONS THEREIN, THAT THE MAP COMPLIES WITH APPLICABLE STATUTORY  
AND ORDINANCE PROVISIONS, THAT ALL CONDITIONS IMPOSED UPON THE FINAL MAP HAVE  
BEEN MET, AND THAT THE MAP WAS APPROVED AND THE PARCELS HEREON WERE ACCEPTED  
BY THE DIRECTOR OF PLANNING ON THE 12<sup>TH</sup> DAY OF DECEMBER 2014.

David P. Rankin  
THOMAS W. PERROD  
ACTING DIRECTOR OF PLANNING  
CITY OF LAS VEGAS, NEVADA David Rankin on behalf of

**RECORDER'S NOTE**

ANY SUBSEQUENT CHANGES TO THIS MAP SHOULD BE EXAMINED AND MAY BE DETERMINED BY  
REFERENCE TO THE COUNTY RECORDER'S CUMULATIVE MAP INDEX, N.E.S. 278.5835

FUP-56510

<p align="center">AMENDED FINAL MAP OF A PORTION OF MONTECITO AT SUMMERLIN VILLAGE 23B A COMMON INTEREST COMMUNITY</p> <p>LOTS 34 THROUGH 47, 50, 52 THROUGH 71, TOGETHER WITH COMMON ELEMENTS "C", "D", AND "H" AS SHOWN ON THAT CERTAIN MAP ON FILE IN THE CLARK COUNTY RECORDER'S OFFICE IN BOOK 147, PAGE 23 OF PLATS, SITUATE IN THE WEST HALF (W 1/2) OF SECTION 27, TOWNSHIP 20 SOUTH, RANGE 59 EAST, M.D.M., CITY OF LAS VEGAS, CLARK COUNTY, NEVADA.</p>		<p>BOOK NO. <u>1014723</u></p> <p>INSTRUMENT NO. <u>02462</u></p> <p>OFFICIAL RECORDS FILED AT THE REQUEST OF TRI-CORE SURVEYING DATE <u>12/24/14</u> AT <u>3:38:27 PM</u> BOOK <u>147</u> PAGE <u>0032</u> OF PLATE CLARK COUNTY, NEVADA RECORDS DEBBIE CONWAY, RECORDER FEE \$ <u>103</u> DEPUTY <u>020</u></p>
<p align="center"><b>TRI-CORE SURVEYING, LLC</b></p> <p>LAND SURVEYING &amp; CONSTRUCTION SURVEYING MAPPING &amp; LAND DEVELOPMENT SERVICES BOUNDARY &amp; TOPOGRAPHIC SURVEYS 6751 WEST CHARLESTON BLVD. LAS VEGAS, NEVADA 89148 TEL. (702) 876-1588 FAX (702) 876-1578</p>		

# AMENDED FINAL MAP OF A PORTION OF MONTECITO AT SUMMERLIN VILLAGE 23B A COMMON INTEREST COMMUNITY

LOTS 34 THROUGH 47, 50, 52 THROUGH 69 71, TOGETHER WITH COMMON ELEMENTS "C", "D", AND "H"  
AS SHOWN ON THAT CERTAIN MAP ON FILE IN THE CLARK COUNTY RECORDER'S OFFICE IN BOOK 147, PAGE 23 OF PLATS,  
SITUATE IN THE WEST HALF (W 1/2) OF SECTION 27, TOWNSHIP 20 SOUTH, RANGE 59 EAST, M.D.M.,  
CITY OF LAS VEGAS, CLARK COUNTY, NEVADA.

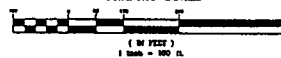
FOUND 3 1/4" ALUMINUM CAP  
STAMPED "PLS 11174"  
PER FILE IN PAGE 28  
OF PARCEL MAPS

FOUND BLU BRASS CAP  
DATED 1987

BASIS OF BEARINGS 5347.68'



GRAPHIC SCALE



**LEGEND**

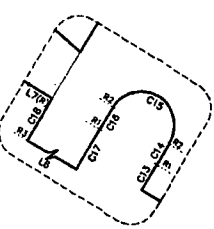
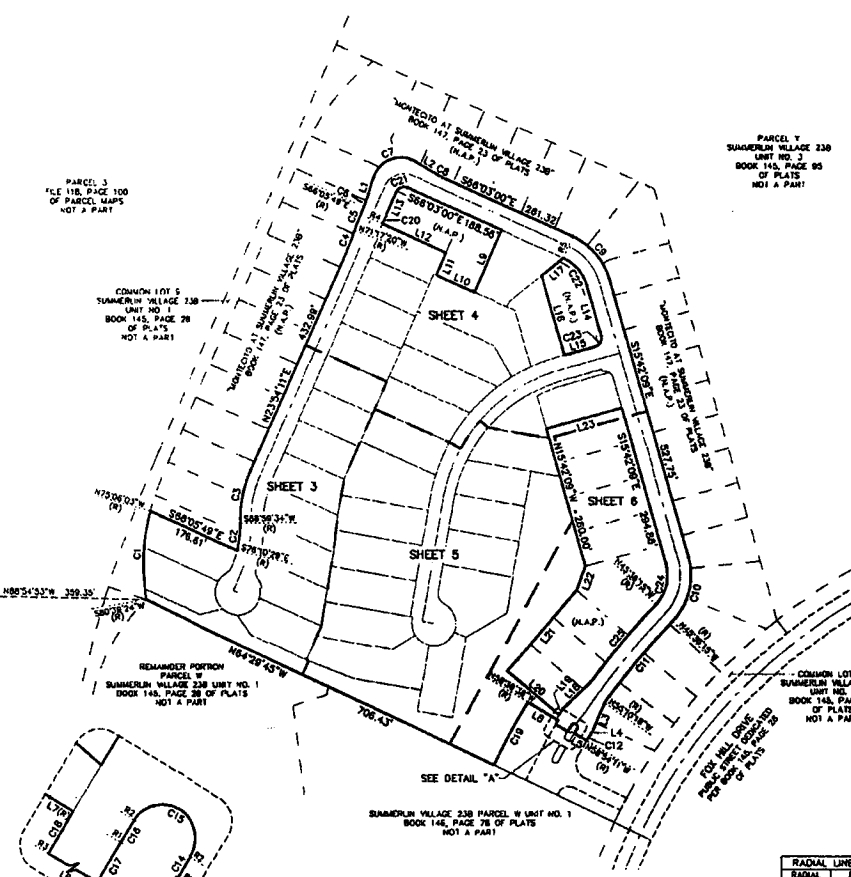
- SUBDIVISION BOUNDARY LINE
- SECTION LINE
- ADJACENT'S PARCEL LINE
- HATCHING
- STREET CENTERLINE
- ⊙ FOUND MONUMENT AS DESCRIBED
- ⊙ SET TYPE W MONUMENT STAMPED "PLS 17448" WITH TYPE "H-A" REFERENCE MONUMENTS UNLESS OTHERWISE NOTED
- L1 LINE NUMBER
- C1 CURVE NUMBER
- R1 RADIAL LINE BEARING
- (R) RADIAL BEARING
- H.A.P. NOT A PART OF THIS SURVEY

LINE	BEARING	LENGTH
L1	N17°26'11"E	24.85'
L2	S89°48'00"W	48.70'
L3	S22°37'55"W	58.83'
L4	S31°19'35"W	5.90'
L5	N38°26'51"W	28.30'
L6	N58°26'51"W	25.14'
L7	S89°48'00"W	5.02'
L8	S89°48'00"W	81.00'
L9	S22°37'00"W	124.00'
L10	S88°48'00"W	78.41'
L11	N12°32'10"E	45.00'
L12	N88°02'10"W	127.77'

LINE	BEARING	LENGTH
L13	S22°36'11"W	48.87'
L14	N12°32'00"W	88.80'
L15	S74°17'51"W	88.87'
L16	N12°32'00"W	181.40'
L17	N81°27'33"E	21.23'
L18	S45°13'48"W	73.02'
L19	S31°38'38"W	12.80'
L20	N44°31'43"W	128.80'
L21	N45°27'00"W	193.00'
L22	S20°20'41"W	45.83'
L23	N72°37'21"E	143.44'

CURVE	DATA	BEARINGS	LENGTH	TANGENT
C1	547.63'	388.81'	183.17'	81.70'
C2	1439.25'	181.00'	48.45'	14.80'
C3	245.25'	238.00'	108.00'	68.00'
C4	511.21'	480.50'	43.55'	21.70'
C5	811.21'	818.20'	47.02'	23.65'
C6	628.00'	108.00'	10.81'	5.40'
C7	102.372'	53.00'	24.00'	12.00'
C8	813.00'	100.00'	10.81'	5.40'
C9	820.00'	118.80'	108.00'	68.17'
C10	800.504'	110.20'	173.25'	89.13'
C11	245.25'	1177.55'	188.63'	88.62'
C12	628.00'	1188.00'	11.88'	7.88'
C13	613.25'	1193.38'	8.37'	2.88'
C14	1284.71'	253.83'	5.90'	2.88'
C15	1800.00'	8.18'	18.37'	8888.00'
C16	1284.71'	258.12'	5.78'	2.18'
C17	628.38'	1288.71'	8.38'	4.18'
C18	872.28'	1223.05'	8.83'	4.18'
C19	270.00'	1788.00'	132.00'	88.00'
C20	158.38'	428.50'	15.18'	7.08'
C21	800.00'	18.00'	23.15'	18.00'
C22	820.00'	78.50'	82.24'	28.80'
C23	800.00'	16.00'	23.15'	18.00'
C24	800.00'	78.50'	80.24'	44.28'
C25	820.00'	1288.50'	184.87'	92.81'

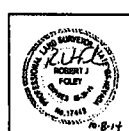
RADIAL	BEARING
R1	N58°40'00"W
R2	N57°20'00"W
R3	N59°00'00"W
R4	N67°57'00"W
R5	S22°37'00"E



NO MONUMENT FOUND  
LOCATION PER  
BOOK 121, PAGE 12  
OF PLATS

DETAIL "A"  
NOT TO SCALE

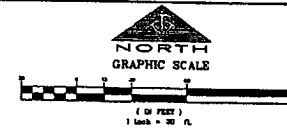
JOB# 15813.0001



144/0032

AMENDED FINAL MAP OF A PORTION OF  
**MONTECITO AT SUMMERLIN VILLAGE 23B**  
 A COMMON INTEREST COMMUNITY

LOTS 34 THROUGH 47, 50, 52 THROUGH 71, TOGETHER WITH COMMON ELEMENTS "C", "D", AND "H" AS SHOWN ON THAT CERTAIN MAP ON FILE IN THE CLARK COUNTY RECORDER'S OFFICE IN BOOK 147, PAGE 23 OF PLATS, SITUATE IN THE WEST HALF (W 1/2) OF SECTION 27, TOWNSHIP 20 SOUTH, RANGE 59 EAST, M.D.M., CITY OF LAS VEGAS, CLARK COUNTY, NEVADA.



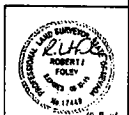
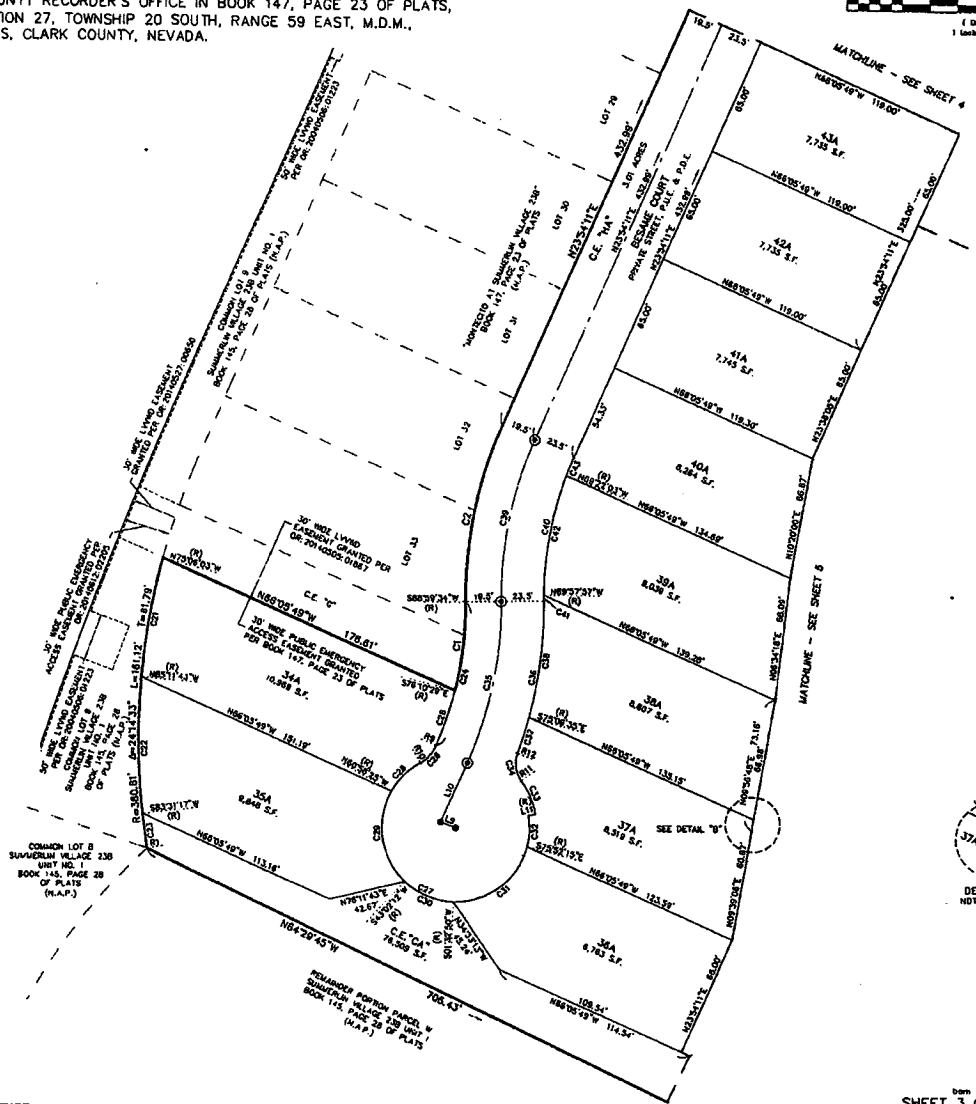
**LEGEND**

- SUBDIVISION BOUNDARY LINE
- - - ALIQUOT PART LINE
- ASSESSOR'S PARCEL LINE
- LOT LINE
- EXISTING RIGHT-OF-WAY LINE
- LIMITS OF PRIVATE STREET/RIGHT-OF-WAY LINE
- STREET CENTERLINE
- EASEMENT LINE
- WATCHLINE

- ⊙ SET MONUMENT PER 'MONTECITO AT SUMMERLIN VILLAGE 23B', BOOK 147, PAGE 23 OF PLATS WITH TYPE IN REFERENCE MONUMENTS
- SET TYPE IN MONUMENT STAMPED '2LS 17448' WITH TYPE IN REFERENCE MONUMENTS
- JSA AMENDED LOT NUMBER  
TOTAL RESIDUAL LOTS IN SUBDIVISION = 34  
TOTAL COMMON LOTS IN SUBDIVISION = 3
- C.E. COMMON ELEMENT LOT
- S.F. SQUARE FEET
- L1 LINE SEGMENT
- C1 CURVE SEGMENT
- (R) RADIAL BEARING
- R1 RADIAL LINE BEARING
- P.O.E. PUBLIC DRAINAGE EASEMENT
- P.U.E. PUBLIC UTILITY EASEMENT
- LVVWD LAS VEGAS VALLEY WATER DISTRICT
- CL.V. CITY OF LAS VEGAS
- APN ASSESSOR'S PARCEL NUMBER
- OR CLARK COUNTY OFFICIAL RECORDS
- H.A.P. NOT A PART OF THIS SURVEY

**NOTES AND EASEMENT GRANTS**

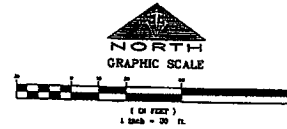
1. REAR PROPERTY CORNERS WILL BE MARKED BY A REBAR AND ALIQUOT CAP STAMPED '2LS 17448' UNLESS A BUSH OR WALL IS BUILT. THEN A NAIL AND ALIQUOT DISK WILL BE SET IN THE DROCK WALL TO DENOTE THE SIDE PROPERTY LINE. FRONT PROPERTY CORNERS WILL BE WITNESSED BY A 3/4" IN CUT IN THE TOP OF CURB AT THE SIDE PROPERTY LINE PROLONGED.
2. COMMON ELEMENT LOT "HA" AS SHOWN HEREON IS A PRIVATE STREET. PUBLIC UTILITY EASEMENT (P.U.E.), CITY OF LAS VEGAS SEWER EASEMENT, AND PUBLIC DRAINAGE EASEMENT (P.D.E.) TO BE PRIVATELY MAINTAINED BY THE HOMEOWNER'S ASSOCIATION.
3. PRIVATE PEDESTRIAN ACCESS EASEMENTS ARE HEREBY GRANTED ON COMMON ELEMENT LOT "HA" WHERE SIDEWALKS EXIST TO BE PRIVATELY MAINTAINED BY THE HOMEOWNER'S ASSOCIATION.
4. A SIGHT VISIBILITY RESTRICTION ZONE SHALL BE PROVIDED AT ALL INTERSECTIONS. REFERENCE SHOULD BE MADE TO THE LATEST APPROVED CONSTRUCTION IMPROVEMENT PLAN CONCERNING SIGHT VISIBILITY RESTRICTION ZONES (SVR).
5. SEE SHEET 6 FOR LINE, CURVE, AND RADIAL TABLES.



148/0032

**AMENDED FINAL MAP OF A PORTION OF  
MONTECITO AT SUMMERLIN VILLAGE 23B  
A COMMON INTEREST COMMUNITY**

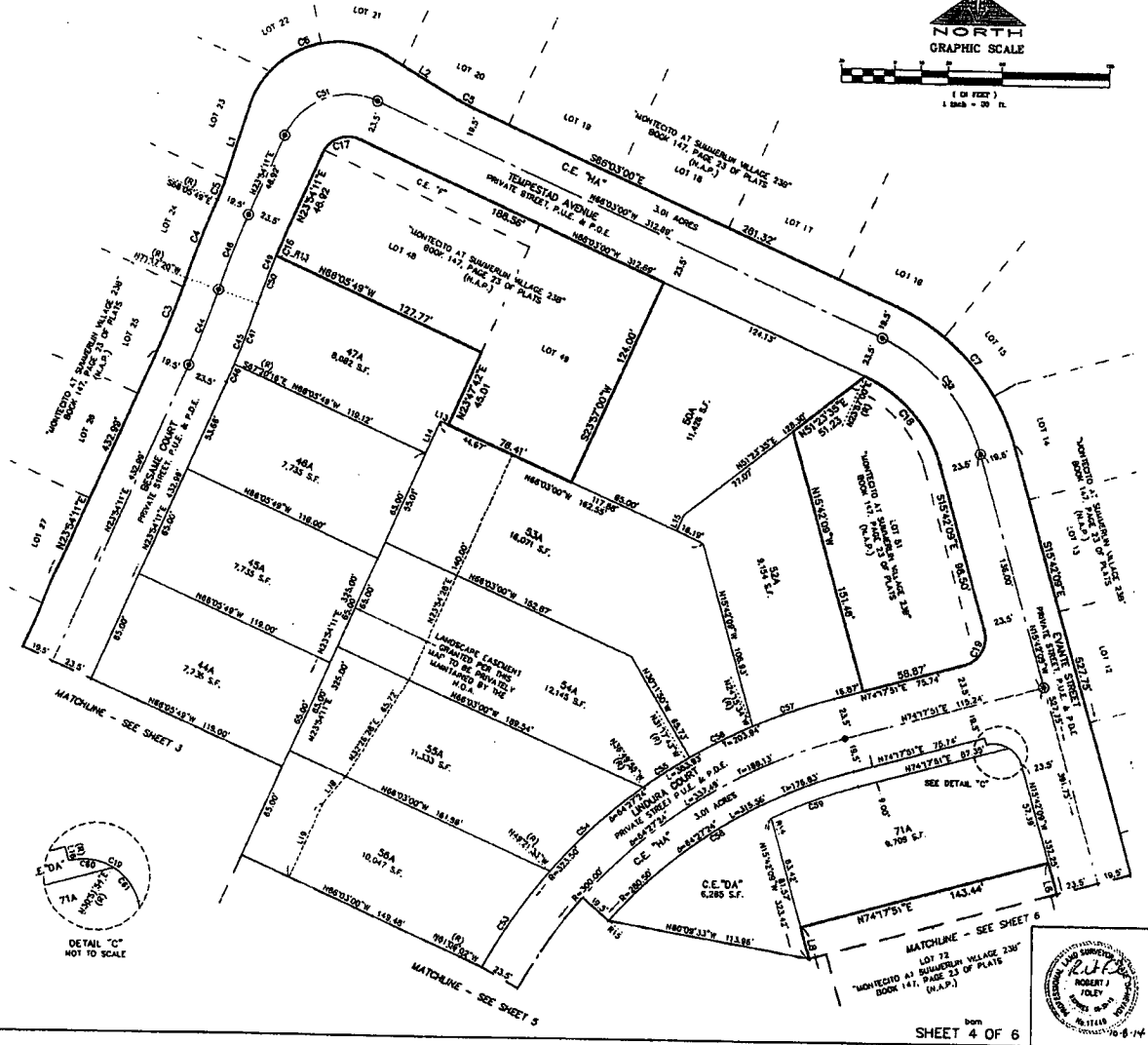
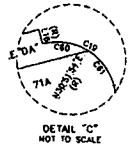
LOTS 34 THROUGH 47, 50, 52 THROUGH 71, TOGETHER WITH COMMON ELEMENTS "C", "D", AND "H"  
AS SHOWN ON THAT CERTAIN MAP ON FILE IN THE CLARK COUNTY RECORDER'S OFFICE IN BOOK 147, PAGE 23 OF PLATS,  
SITUATE IN THE WEST HALF (W 1/2) OF SECTION 27, TOWNSHIP 20 SOUTH, RANGE 59 EAST, M.D.M.,  
CITY OF LAS VEGAS, CLARK COUNTY, NEVADA.



LEGEND	
	SUBDIVISION BOUNDARY LINE
	ALLOTMENT PART LINE
	ASSESSOR'S PARCEL LINE
	LOT LINE
	EXISTING RIGHT-OF-WAY LINE
	LIMITS OF PRIVATE STREET/RIGHT-OF-WAY LINE
	STREET CENTERLINE
	EASEMENT LINE
	WATERLINE
	SET MONUMENT PER 'MONTECITO AT SUMMERLIN VILLAGE 23B', BOOK 147, PAGE 23 OF PLATS
	SET TYPE 'H' MONUMENT STAMPED 'PLS 17449' WITH TYPE 'H' REFERENCE MONUMENTS
35A	AMENDED LOT NUMBER TOTAL RESIDENTIAL LOTS IN SUBDIVISION = 34 TOTAL COMMON LOTS IN SUBDIVISION = 3
C.E.	COMMON ELEMENT LOT
S.F.	SQUARE FEET
L1	LINE SEGMENT
C1	CURVE SEGMENT
(R)	RADIAL BEARING
R1	RADIAL LINE BEARING
P.D.E.	PUBLIC DRAINAGE EASEMENT
P.U.E.	PUBLIC UTILITY EASEMENT
L.V.W.D.	LAS VEGAS VALLEY WATER DISTRICT
C.L.V.	CITY OF LAS VEGAS
APN	ASSESSOR'S PARCEL NUMBER
OR	CLARK COUNTY OFFICIAL RECORD
N.A.P.	NOT A PART OF THIS SURVEY

**NOTES AND EASEMENT GRANTS**

- REAR PROPERTY CORNERS WILL BE MARKED BY A REBAR AND ALUMINUM CAP STAMPED "PLS 17449" UNLESS A BLOCK WALL IS BUILT. THEN A NAIL AND ALUMINUM DISK WILL BE SET IN THE BLOCK WALL TO DENOTE THE SIDE PROPERTY LINE. FRONT PROPERTY CORNERS WILL BE WITNESSED BY A SAW CUT IN THE TOP OF CURB AT THE SIDE PROPERTY LINE PROLONGED.
- COMMON ELEMENT LOT "H" AS SHOWN HEREON IS A PRIVATE STREET, PUBLIC UTILITY EASEMENT (P.U.E.), CITY OF LAS VEGAS SENIOR EASEMENT, AND PUBLIC DRAINAGE EASEMENT (P.D.E.) TO BE PRIVATELY MAINTAINED BY THE HOMEOWNER'S ASSOCIATION.
- PRIVATE PEDESTRIAN ACCESS EASEMENTS ARE HEREBY GRANTED ON COMMON ELEMENT LOT "H" WHERE SIDEWALKS EXIST TO BE PRIVATELY MAINTAINED BY THE HOMEOWNER'S ASSOCIATION.
- A SIGHT VISIBILITY RESTRICTION ZONE SHALL BE PROVIDED AT ALL INTERSECTIONS. REFERENCE SHOULD BE MADE TO THE LATEST APPROVED CONSTRUCTION IMPROVEMENT PLAN CONCERNING SIGHT VISIBILITY RESTRICTION ZONES (SVRZ).
- SEE SHEET 6 FOR LINE, CURVE, AND RADIAL TABLES.



009 2071.0001

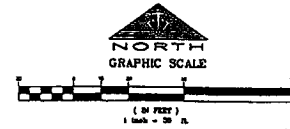


from SHEET 4 OF 6

146/0032

**AMENDED FINAL MAP OF A PORTION OF MONTECITO AT SUMMERLIN VILLAGE 23B  
A COMMON INTEREST COMMUNITY**

LOTS 34 THROUGH 47, 50, 52 THROUGH 71, TOGETHER WITH COMMON ELEMENTS "C", "D", AND "H" AS SHOWN ON THAT CERTAIN MAP ON FILE IN THE CLARK COUNTY RECORDER'S OFFICE IN BOOK 147, PAGE 23 OF PLATS, SITUATE IN THE WEST HALF (W 1/2) OF SECTION 27, TOWNSHIP 20 SOUTH, RANGE 59 EAST, M.D.M., CITY OF LAS VEGAS, CLARK COUNTY, NEVADA.

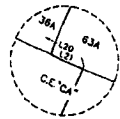


**LEGEND**

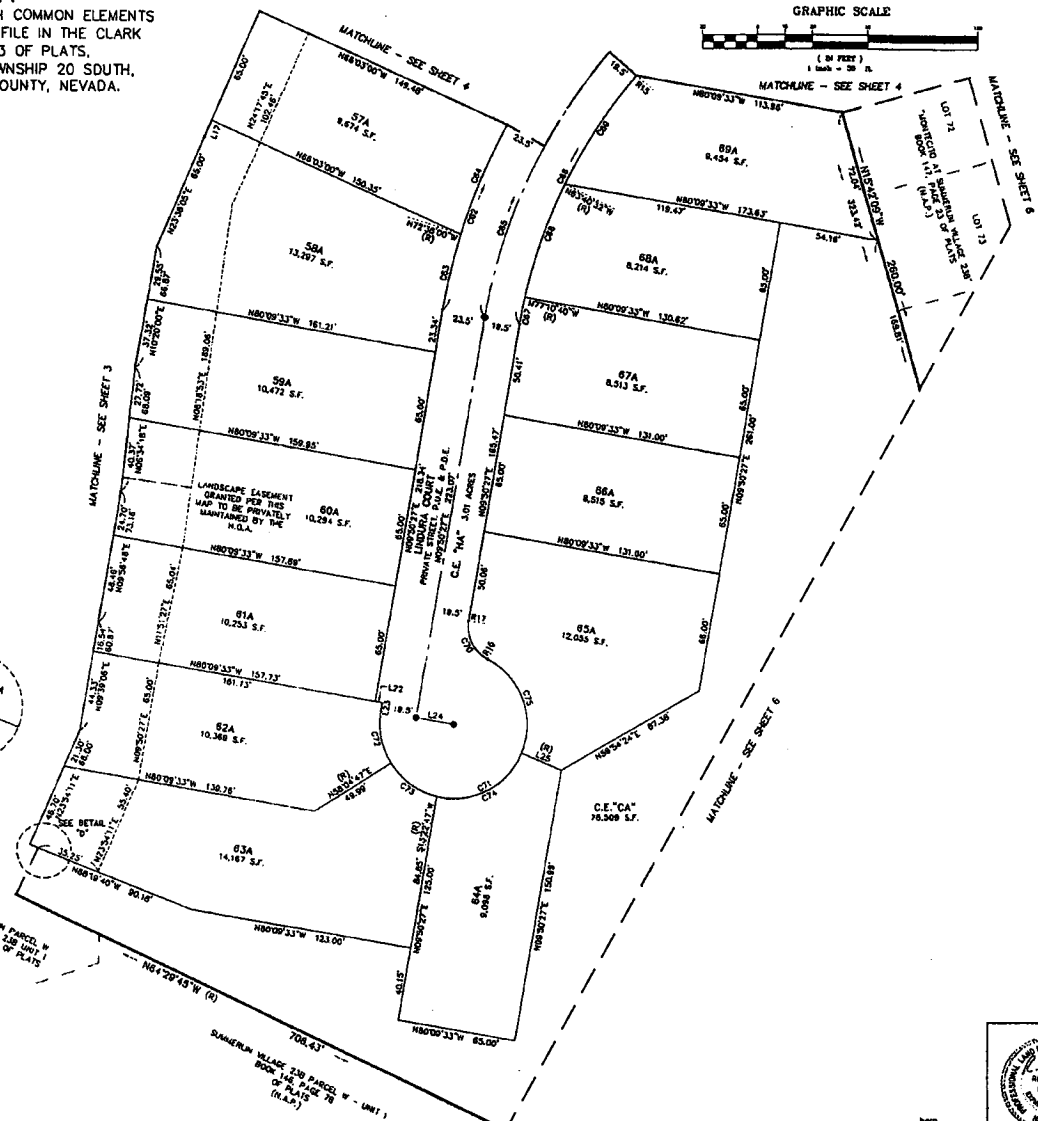
- SUBDIVISION BOUNDARY LINE
- ALIQUOT PART LINE
- ASSESSOR'S PARCEL LINE
- LOT LINE
- EXISTING RIGHT-OF-WAY LINE
- LIMITS OF PRIVATE STREET/RIGHT-OF-WAY LINE
- STREET CENTERLINE
- EASEMENT LINE
- MATCHLINE
- SET MONUMENT PER "MONTECITO AT SUMMERLIN VILLAGE 23B", BOOK 147, PAGE 23 OF PLATS
- SET TYPE "B" MONUMENT STAMPED "PLS 17449" WITH TYPE "IV" REFERENCE MONUMENTS
- 35A AMENDED LOT NUMBER  
TOTAL RESIDENTIAL LOTS IN SUBDIVISION = 34  
TOTAL COMMON LOTS IN SUBDIVISION = 3
- C.E. COMMON ELEMENT LOT
- S.F. SQUARE FEET
- L1 LINE SEGMENT
- C1 CURVE SEGMENT
- (R) RADIAL BEARING
- (B) RADIAL LINE BEARING
- P.D.E. PUBLIC DRAINAGE EASEMENT
- P.U.E. PUBLIC UTILITY EASEMENT
- L.V.W.D. LAS VEGAS VALLEY WATER DISTRICT
- C.L.V. CITY OF LAS VEGAS
- A.P.N. ASSESSOR'S PARCEL NUMBER
- O.R. CLARK COUNTY OFFICIAL RECORD
- N.A.P. NOT A PART OF THIS SURVEY

**NOTES AND EASEMENT GRANTS**

1. REAR PROPERTY CORNERS WILL BE MARKED BY A REBAR AND ALUMINUM CAP STAMPED "PLS 17449" UNLESS A BLOCK WALL IS BUILT. THEN A NAIL AND ALUMINUM DISK WILL BE SET IN THE BLOCK WALL TO DENOTE THE SIDE PROPERTY LINE. FRONT PROPERTY CORNERS WILL BE WITNESSED BY A SAW CUT IN THE TOP OF CURB AT THE SIDE PROPERTY LINE PROLONGED.
2. COMMON ELEMENT LOT "HA" AS SHOWN HEREON IS A PRIVATE STREET, PUBLIC UTILITY EASEMENT (P.U.E.), CITY OF LAS VEGAS SEWER EASEMENT, AND PUBLIC DRAINAGE EASEMENT (P.D.E.) TO BE PRIVATELY MAINTAINED BY THE HOMEOWNER'S ASSOCIATION.
3. PRIVATE PEDESTRIAN ACCESS EASEMENTS ARE HEREBY GRANTED ON COMMON ELEMENT LOT "HA" WHERE SIDEWALKS EXIST TO BE PRIVATELY MAINTAINED BY THE HOMEOWNER'S ASSOCIATION.
4. A SIGHT VISIBILITY RESTRICTION ZONE SHALL BE PROVIDED BY ALL INTERSECTIONS. REFERENCE SHOULD BE MADE TO THE LATEST APPROVED CONSTRUCTION IMPROVEMENT PLAN CONCERNING SIGHT VISIBILITY RESTRICTION ZONES (SVRZ).
5. SEE SHEET 6 FOR LINE, CURVE, AND RADIAL TABLES.



RESERVED PORTION PARCEL W/ SUMMERLIN VILLAGE 23B (W 1/2) BOOK 145, PAGE 20 OF PLATS (N.A.P.)



AMENDED FINAL MAP OF A PORTION OF  
**MONTECITO AT SUMMERLIN VILLAGE 23B**  
 A COMMON INTEREST COMMUNITY

LOTS 34 THROUGH 47, 50, 52 THROUGH 71, TOGETHER WITH COMMON ELEMENTS "C", "D", AND "H"  
 AS SHOWN ON THAT CERTAIN MAP ON FILE IN THE CLARK COUNTY RECORDER'S OFFICE IN BOOK 147, PAGE 23 OF PLATS,  
 SITUATE IN THE WEST HALF (W 1/2) OF SECTION 27, TOWNSHIP 20 SOUTH, RANGE 59 EAST, M.D.M.,  
 CITY OF LAS VEGAS, CLARK COUNTY, NEVADA.

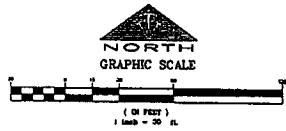
CURVE TABLE			
CURVE	DEG. TA	RADIUS	LENGTH
C1	14°48'58"	191.07	48.52
C2	24°52'38"	230.00	100.80
C3	31°31'31"	480.50	33.54
C4	31°31'31"	518.50	41.07
C5	83°50'00"	100.00	10.91
C6	102°22'49"	53.00	91.88
C7	92°02'51"	118.50	105.07
C8	60°04'54"	119.50	125.33
C9	0°43'38"	1187.00	14.80
C10	0°38'28"	1183.00	5.37
C11	135°13'	243.83	4.85
C12	160°00'00"	6.18	19.37
C13	134°13'	265.17	4.78
C14	0°03'51"	1255.72	9.36
C15	0°24'58"	1231.00	8.93
C16	33°29'	578.50	14.18
C17	80°02'49"	16.00	23.15
C18	50°20'31"	78.50	67.22
C19	50°02'00"	16.00	23.13
C20	60°05'44"	78.50	68.24
C21	10°05'40"	380.81	81.09
C22	11°17'00"	380.81	74.88
C23	23°18'32"	380.81	81.09
C24	24°28'47"	151.00	61.80
C25	8°28'48"	151.00	32.16
C26	17°23'11"	205.00	14.10
C27	23°18'32"	45.50	17.49
C28	31°37'18"	45.50	22.59
C29	78°01'23"	45.50	34.74
C30	43°24'22"	45.50	29.33
C31	77°23'04"	45.50	34.72
C32	24°12'25"	45.50	17.11
C33	28°18'21"	45.50	20.78
C34	58°08'34"	18.00	15.88
C35	24°54'38"	210.50	81.37
C36	70°27'31"	234.00	83.80
C37	53°42'	234.00	79.87
C38	18°34'22"	234.00	64.83
C39	24°54'38"	210.50	81.37
C40	24°54'38"	187.00	81.30
C41	1°02'30"	187.00	3.40
C42	70°30'31"	187.00	87.23
C43	31°16'	187.00	19.87
C44	31°31'	500.00	58.31
C45	31°31'	323.50	47.44
C46	71°27'27"	323.50	13.21
C47	33°27'04"	323.50	38.10
C48	31°31'	350.00	44.31
C49	31°31'	478.50	43.18
C50	37°29'23"	478.50	29.07
C51	60°02'49"	39.50	62.08
C52	50°02'01"	100.00	83.82
C53	11°44'58"	323.50	66.29
C54	17°31'38"	323.50	70.73
C55	27°12'	323.50	31.28
C56	70°02'08"	323.50	38.23
C57	83°32'28"	323.50	48.31
C58	33°23'49"	280.50	183.87
C59	10°08'30"	271.50	52.92
C60	48°34'00"	16.00	13.80
C61	54°22'57"	16.00	12.14
C62	48°27'24"	323.50	333.33
C63	73°13'	323.50	42.49
C64	11°31'59"	323.50	53.12
C65	84°27'24"	300.00	332.49
C66	84°27'24"	280.50	313.56
C67	28°53'	280.50	14.50
C68	17°30'00"	280.50	16.10
C69	14°32'44"	280.50	11.21
C70	72°11'41"	20.00	28.20
C71	28°11'41"	45.50	17.87
C72	47°54'40"	45.50	25.52
C73	44°34'00"	45.50	31.60
C74	80°34'28"	45.50	35.81
C75	80°31'41"	45.50	32.24
C76	80°32'54"	100.00	101.89
C77	47°28'22"	236.00	20.22
C78	47°28'22"	326.00	20.00

RADIAL LINE TABLE	
RADIAL	BEARING
R1	S89°59'29"W
R2	N85°55'54"W
R3	N58°40'08"W
R4	S53°33'50"E
R5	S33°08'31"E
R6	N85°11'06"W
R7	N59°32'50"W
R8	N50°03'01"W
R9	S88°31'40"E
R10	N25°57'37"W
R11	S33°18'17"E
R12	S70°02'52"E
R13	N87°47'37"W
R14	N70°07'40"E
R15	N48°07'49"E
R16	N27°38'48"E
R17	S88°08'17"E
R18	N55°15'39"E
R19	S81°51'18"E
R20	N58°29'36"W

LINE TABLE	
LINE	BEARING (LENGTH)
L1	N12°02'11"E 45.50'
L2	S59°14'00"E 45.50'
L3	N58°58'42"W 28.39'
L4	N58°36'21"W 28.32'
L5	N58°00'00"W 28.00'
L6	S13°42'09"E 281.86'
L7	S43°38'38"W 286.00'
L8	N10°33'00"W 280.00'
L9	N68°27'17"W 81.25'
L10	N23°24'11"E 35.69'
L11	N73°31'00"E 4.00'
L12	N00°54'48"E 6.18'
L13	N82°01'00"W 4.83'
L14	N72°32'00"E 4.00'
L15	N23°32'00"E 36.14'
L16	N12°47'09"W 4.00'
L17	S72°56'11"E 6.08'
L18	N81°14'00"E 8.72'
L19	N23°27'00"E 35.83'
L20	N88°00'19"W 111.54'
L21	N81°03'40"W 4.00'
L22	N80°30'33"W 4.00'
L23	N80°00'33"W 4.00'
L24	N80°00'33"W 4.00'
L25	N87°00'33"W 33.84'
L26	N13°30'38"E 28.55'
L27	N13°58'36"E 1.83'
L28	N31°48'25"E 5.50'

NOTES AND EASEMENT GRANTS

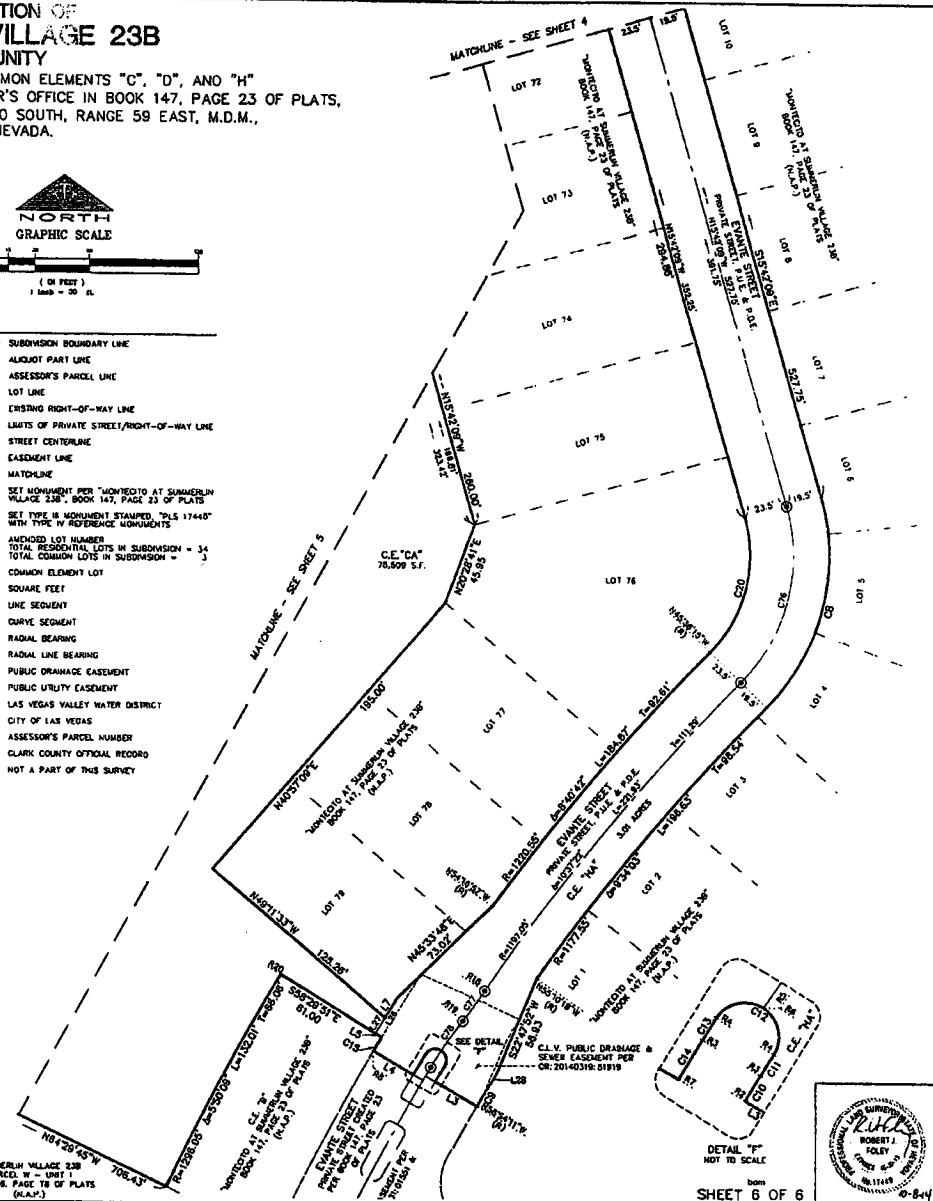
- REAR PROPERTY CORNERS WILL BE MARKED BY A REBAR AND ALUMINUM CAP STAMPED "763 1744" UNLESS A BLOCK WALL IS BUILT. THEN A NAIL AND ALUMINUM DISK WILL BE SET IN THE BLOCK WALL TO DENOTE THE SAME PROPERTY LINE. FRONT PROPERTY CORNERS WILL BE MARKED BY A SNAW CUT IN THE TOP OF CURB AT THE SIDE PROPERTY LINE PROLONGED.
- COMMON ELEMENT LOT "HA" AS SHOWN HEREON IS A PRIVATE STREET. PUBLIC UTILITY EASEMENT (P.U.E.), CITY OF LAS VEGAS SENIOR EASEMENT, AND PUBLIC DRAINAGE EASEMENT (P.D.E.) TO BE PRIVATELY MAINTAINED BY THE HOMEOWNERS ASSOCIATION.
- PRIVATE PEDESTRIAN ACCESS EASEMENTS ARE HEREBY GRANTED ON COMMON ELEMENT LOT "HA" WHERE BROWNWALKS EXIST TO BE PRIVATELY MAINTAINED BY THE HOMEOWNERS ASSOCIATION.
- A SIGHT VISIBILITY RESTRICTION ZONE SHALL BE PROVIDED AT ALL INTERSECTIONS. REFERENCE SHOULD BE MADE TO THE LATEST APPROVED CONSTRUCTION IMPROVEMENT PLAN CONCERNING SIGHT VISIBILITY RESTRICTION ZONES (S.V.R.).
- SEE SHEET 6 FOR LINE, CURVE, AND RADIAL TABLES.



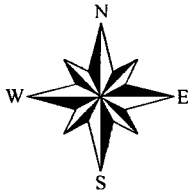
LEGEND

- SUBDIVISION BOUNDARY LINE
  - ALIQUOT PART LINE
  - ASSESSOR'S PARCEL LINE
  - LOT LINE
  - EXISTING RIGHT-OF-WAY LINE
  - LIMITS OF PRIVATE STREET/RIGHT-OF-WAY LINE
  - STREET CENTERLINE
  - EASEMENT LINE
- ① MATCHLINE - SEE SHEET 4
- ② SET MONUMENT PER "MONTECITO AT SUMMERLIN VILLAGE 23B", BOOK 147, PAGE 23 OF PLATS
- SET TYPE "H" MONUMENT STAMPED "763 1744" WITH TYPE "V" REFERENCE MONUMENTS
- 35A AMENDED LOT NUMBER
- TOTAL RESIDENTIAL LOTS IN SUBDIVISION = 34
- TOTAL COMMON LOTS IN SUBDIVISION = 3
- C.E. COMMON ELEMENT LOT
- S.F. SQUARE FEET
- L LINE SEGMENT
- LI CURVE SEGMENT
- R RADIAL BEARING
- RI RADIAL LINE BEARING
- P.D.E. PUBLIC DRAINAGE EASEMENT
- P.U.E. PUBLIC UTILITY EASEMENT
- LVWD LAS VEGAS VALLEY WATER DISTRICT
- CL.V. CITY OF LAS VEGAS
- AP ASSESSOR'S PARCEL NUMBER
- CR CLARK COUNTY OFFICIAL RECORD
- N.A.P. NOT A PART OF THIS SURVEY

SUMMERLIN VILLAGE 23B  
 PARCEL W - UNIT 1  
 BOOK 148, PAGE 78 OF PLATS  
 (P.L.A.)

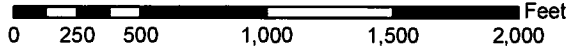


N81032

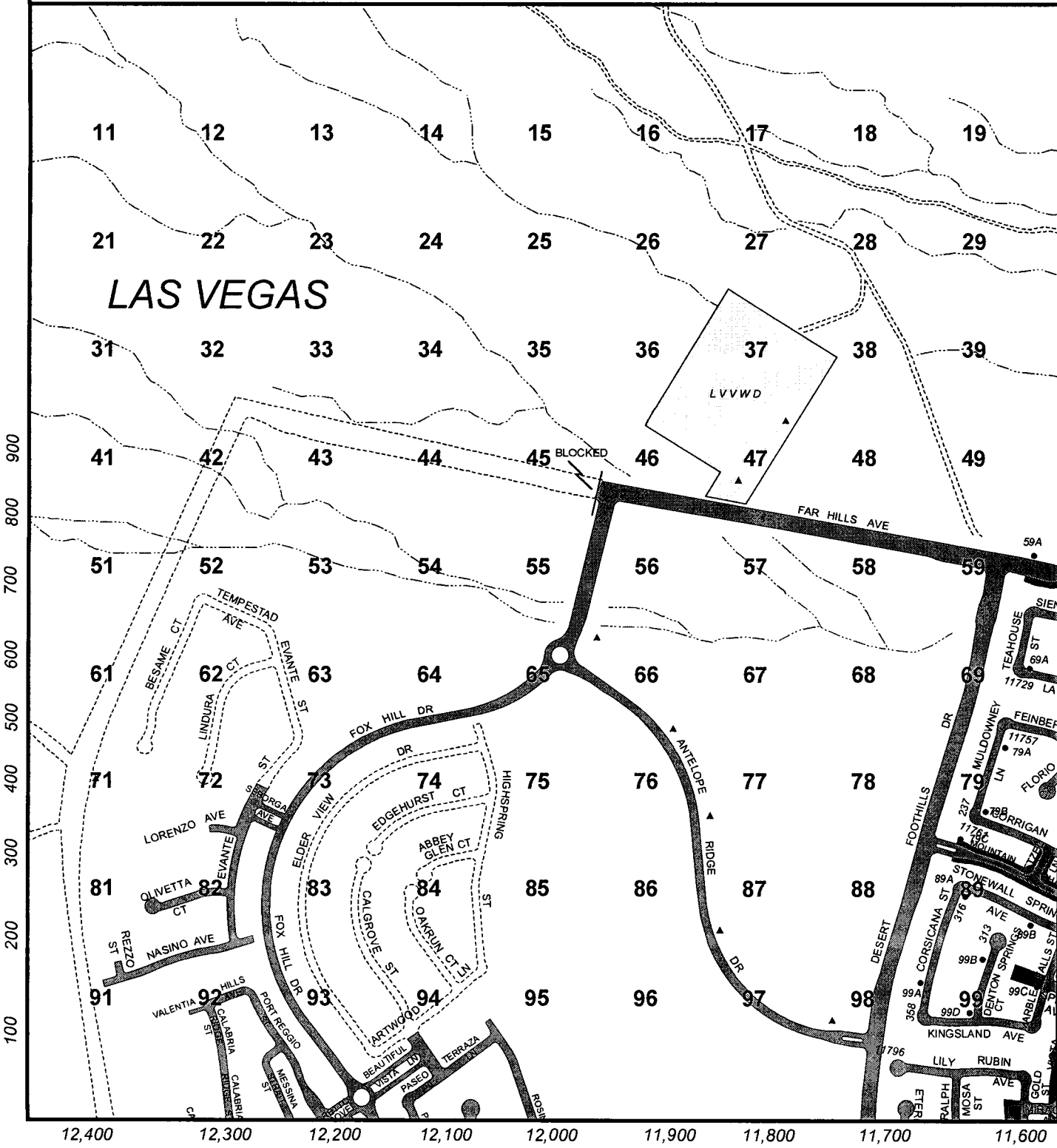


# 2312

© City of Las Vegas 12/02/14



2211	2212	2213
2311	2312	2313
2411	2412	2413



## LAS VEGAS

100  
200  
300  
400  
500  
600  
700  
800  
900

12,400 12,300 12,200 12,100 12,000 11,900 11,800 11,700 11,600