

THE SHORES NO. 1-C BY LEWIS HOMES

FEBRUARY 23, 1990

L-21-3,4

BLOCK H	LOT	282	8101	TROPIC ISLE CIRCLE	E/W PUBLIC STREET
		283	8105		
		284	8109		
		285	8113		
		286	8117		
		287	8121		
		288	8125		
		289	8124		
		290	8120		
		291	8116		
		292	8112		
		293	8108		
		294	8104		
		295	8100		
BLOCK H	LOT	296	8101	GRACEVILLE AVENUE	E/W PUBLIC STREET
		297	8105		
		298	8109		
		299	8113		
		300	8117		
		301	8121		
		302	8125		
BLOCK H	LOT	303	2020	CEDAR HILLS STREET	N/S PUBLIC STREET
		304	2016		
		305	2012		
		306	2008		
		307	2004		
		308	2000		
		309	2001		
		310	2005		
		311	2009		
		312	2013		
		313	2017		
		314	2021		
		315	2025		
		316	2029		
BLOCK J	LOT	446	2101	INTERBAY STREET	N/S PUBLIC STREET
BLOCK J	LOT	465	8128	GRACEVILLE AVENUE	E/W PUBLIC STREET
		466	8124		
		467	8120		
		468	8116		
		469	8112		
		470	8108		
		471	8104		
		472	8100		
		473	8044		
		474	8040		
BLOCK K	LOT	437	2016	INTERBAY STREET	N/S PUBLIC STREET
		438	2012		
		439	2008		
		440	2004		
		441	2000		
		442	2001		
		443	2005		
		444	2009		
		445	2013		
COMMON AREAS:	LOT A	2005		PUEBLO VISTA DRIVE	N/S PUBLIC STREET
	B	2004			
	LOT C	8041		TROPIC ISLE CIRCLE	E/W PUBLIC STREET
NO ADDRESSES ON:				LAKE MEAD BOULEVARD	E/W PUBLIC STREET

 Ron Gregory
Planner

RG/dr

THE SHORES NO. 1-C BY LEWIS HOMES

FEBRUARY 23, 1990

L-21-3,4

BLOCK H	LOT	282	8101	TROPIC ISLE CIRCLE	E/W PUBLIC STREET
		283	8105		
		284	8109		
		285	8113		
		286	8117		
		287	8121		
		288	8125		
		289	8124		
		290	8120		
		291	8116		
		292	8112		
		293	8108		
		294	8104		
		295	8100		
BLOCK H	LOT	296	8101	GRACEVILLE AVENUE	E/W PUBLIC STREET
		297	8105		
		298	8109		
		299	8113		
		300	8117		
		301	8121		
		302	8125		
BLOCK H	LOT	303	2020	CEDAR HILLS STREET	N/S PUBLIC STREET
		304	2016		
		305	2012		
		306	2008		
		307	2004		
		308	2000		
		309	2001		
		310	2005		
		311	2009		
		312	2013		
		313	2017		
		314	2021		
		315	2025		
		316	2029		
BLOCK J	LOT	446	2101	INTERBAY STREET	N/S PUBLIC STREET
BLOCK J	LOT	465	8128	GRACEVILLE AVENUE	E/W PUBLIC STREET
		466	8124		
		467	8120		
		468	8116		
		469	8112		
		470	8108		
		471	8104		
		472	8100		
		473	8044		
		474	8040		
BLOCK K	LOT	437	2016	INTERBAY STREET	N/S PUBLIC STREET
		438	2012		
		439	2008		
		440	2004		
		441	2000		
		442	2001		
		443	2005		
		444	2009		
		445	2013		
COMMON AREAS:	LOT A	2005		PUEBLO VISTA DRIVE	N/S PUBLIC STREET
	B	2004			
	LOT C	8041		TROPIC ISLE CIRCLE	E/W PUBLIC STREET
NO ADDRESSES ON:				LAKE MEAD BOULEVARD	E/W PUBLIC STREET

~~____~~
 Ron Gregory
 Planner

RG/dr

AMENDED FINAL MAP - A PORTION OF
THE SHORES NO. 1-C BY LEWIS HOMES

JUNE 30, 1993

FIRE MAP #2217::44
200 MAP:L-21-3

BLOCK H	LOT	295	8100	TROPIC ISLE CIRCLE	E/W	PUBLIC STREET
BLOCK H	LOT	296	8101	GRACEVILLE AVENUE	E/W	PUBLIC STREET

****COMMON AREAS:**

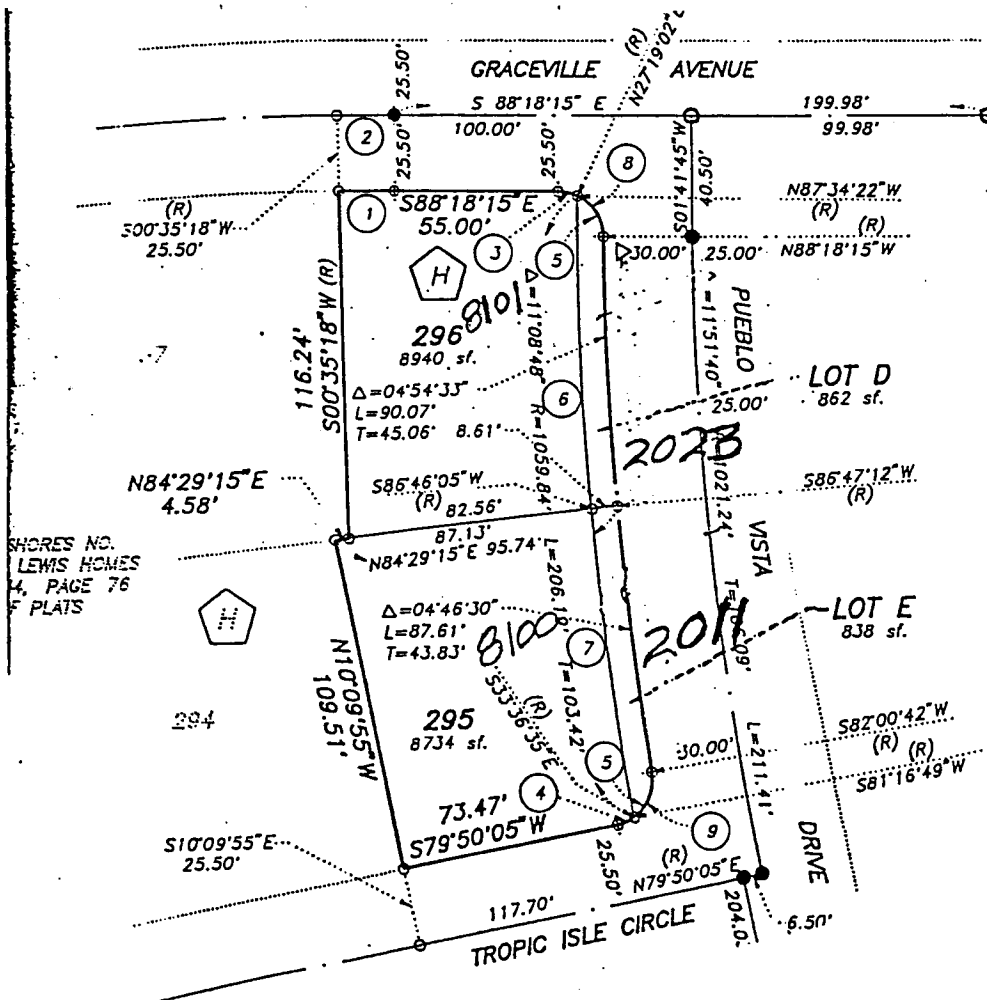
LOT	D	2023	PUEBLO VISTA DRIVE	N/S	PUBLIC STREET
	E	2011			

****note:** These Common Area Lots have been ADDED to this Subdivision
by the Amended Map recorded June 24, 1993.

CITY OF LAS VEGAS
DEPARTMENT OF COMMUNITY
PLANNING & DEVELOPMENT

MP
MATT PINJUV, PLANNER

MP/dr



AMENDED FINAL MAP - A PORTION OF
THE SHORES NO. 1-C BY LEWIS HOMES

JUNE 30, 1993

FIRE MAP #2217::44
200 MAP:L-21-3

BLOCK H LOT 295 8100 TROPIC ISLE CIRCLE E/W PUBLIC STREET
BLOCK H LOT 296 8101 GRACEVILLE AVENUE E/W PUBLIC STREET

**COMMON AREAS:

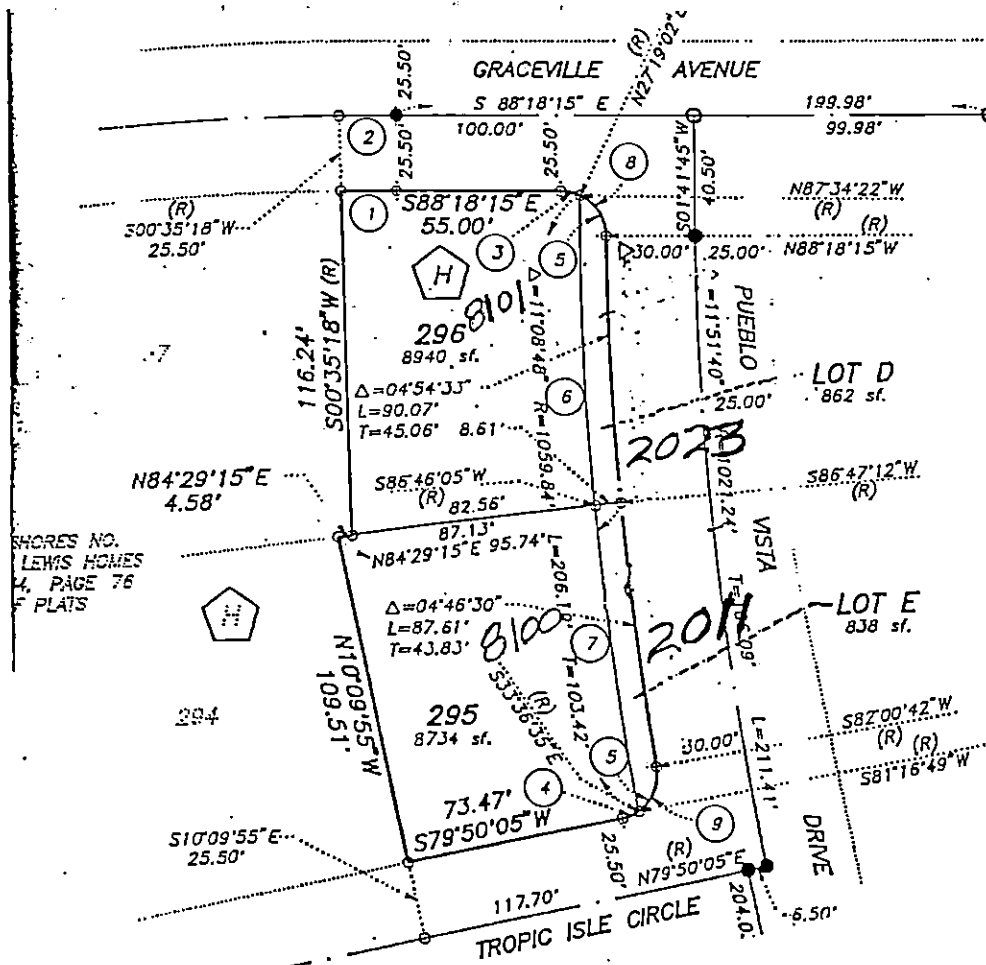
LOT D 2023 PUEBLO VISTA DRIVE N/S PUBLIC STREET
E 2011

**note: These Common Area Lots have been ADDED to this Subdivision
by the Amended Map recorded June 24, 1993.

CITY OF LAS VEGAS
DEPARTMENT OF COMMUNITY
PLANNING & DEVELOPMENT

MP
MATT PINJUV, PLANNER

MP/dr



THE SHORES NO. 1-C BY LEWIS HOMES

FEBRUARY 23, 1990

L-21-3,4

BLOCK H	LOT	282	8101	TROPIC ISLE CIRCLE	E/W PUBLIC STREET
		283	8105		
		284	8109		
		285	8113		
		286	8117		
		287	8121		
		288	8125		
		289	8124		
		290	8120		
		291	8116		
		292	8112		
		293	8108		
		294	8104		
		295	8100		
BLOCK H	LOT	296	8101	GRACEVILLE AVENUE	E/W PUBLIC STREET
		297	8105		
		298	8109		
		299	8113		
		300	8117		
		301	8121		
		302	8125		
BLOCK H	LOT	303	2020	CEDAR HILLS STREET	N/S PUBLIC STREET
		304	2016		
		305	2012		
		306	2008		
		307	2004		
		308	2000		
		309	2001		
		310	2005		
		311	2009		
		312	2013		
		313	2017		
		314	2021		
		315	2025		
		316	2029		
BLOCK J	LOT	446	2101	INTERBAY STREET	N/S PUBLIC STREET
BLOCK J	LOT	465	8128	GRACEVILLE AVENUE	E/W PUBLIC STREET
		466	8124		
		467	8120		
		468	8116		
		469	8112		
		470	8108		
		471	8104		
		472	8100		
		473	8044		
		474	8040		
BLOCK K	LOT	437	2016	INTERBAY STREET	N/S PUBLIC STREET
		438	2012		
		439	2008		
		440	2004		
		441	2000		
		442	2001		
		443	2005		
		444	2009		
		445	2013		
COMMON AREAS:	LOT A	2005		PUEBLO VISTA DRIVE	N/S PUBLIC STREET
	B	2004			
	LOT C	8041		TROPIC ISLE CIRCLE	E/W PUBLIC STREET
NO ADDRESSES ON:				LAKE MEAD BOULEVARD	E/W PUBLIC STREET

 Ron Gregory
Planner

RG/dr