

THE SHORES NO. 1-B BY LEWIS HOMES

FEBRUARY 23, 1990

L-21-2,4

BLOCK H	LOT	346	8008	BLUE CASCADE AVENUE	E/W	PUBLIC STREET
		347	8004			
		348	8000			
BLOCK H	LOT	349	2128	WHITE FALLS STREET	N/S	PUBLIC STREET
		350	2124			
		351	2120			
		352	2116			
		353	2112			
BLOCK H	LOT	354	7924	*MISTY-SHADOWS-AVENUE	E/W	PUBLIC STREET
		355	7920	MAGNOLIA GLEN AVENUE		
		356	7916			
		357	7912			
		358	7908			
		359	7904			
		360	7900			
		361	7832			
BLOCK K	LOT	402	7825	RAMBLEWOOD AVENUE	E/W	PUBLIC STREET
		403	7829			
		404	7901			
		405	7905			
		406	7909			
		407	7913			
		408	7917			
		409	7921			
BLOCK K	LOT	410	2009	CLOVER PATH STREET	N/S	PUBLIC STREET
		411	2013			
		412	2017			
BLOCK K	LOT	413	2016	WHITE FALLS STREET	N/S	PUBLIC STREET
		414	2012			
		415	2008			
		416	2004			
		417	2000			
		418	2001			
		419	2005			
		420	2009			
		421	2013			
		422	2017			
		423	2101			
		424	2105			
		425	2109			
		426	2113			
		427	2117			
BLOCK K	LOT	428	8005	BLUE CASCADE AVENUE	E/W	PUBLIC STREET
		429	8009			
BLOCK L	LOT	478	7824	RAMBLEWOOD AVENUE	E/W	PUBLIC STREET
		479	7828			
		480	7900			
		481	7904			
BLOCK L	LOT	482	2012	CLOVER PATH STREET	N/S	PUBLIC STREET
		483	2016			
BLOCK L	LOT	484	7901	*MISTY-SHADOWS-AVENUE	E/W	PUBLIC STREET
		485	7829	MAGNOLIA GLEN AVENUE		
NO ADDRESSES ON:				LAKE MEAD BOULEVARD	E/W	PUBLIC STREET

* Misty Shadows Avenue changed to
MAGNOLIA GLEN AVENUE by Amendment
 3/2/90, G.C. Wallace, Inc.

RG/dr

 Ron Gregory
 Planner



G.C. WALLACE, INC.
Engineering/Architecture

9 0 0 0 0 7 0 0 5 5 9

G.C. WALLACE, P.E.
MICHAEL RADOJEVICH
KAY L. ADAMS, L.S.
GARY J. SPINKELINK

TERRILL B. ADAMS
CALVIN L. BLACK, P.E.
DAN STUART DAVIS, A.I.A.
JAMES A. DUDDLESTON, P.E.
DAVID HUCKLE, P.E.
JACK H. MITCHELL, P.E.
CRAIG A. PRIMAS, P.E.
MICHAEL D. ROSS, P.E.
RONALD R. THOMAS

I. STEVEN ANDERSON, P.E.
MICHAEL J. CSIZMADIA, P.E.
HOWARD L. HARRIS, P.E.
MARC A. LEMCINE
ARNE H. WAGLEY

5543.8710C

March 1, 1990

RECEIVED
MAR 19 1990
OFFICE

Rita M. Lumos, P.L.S.
City Surveyor
City of Las Vegas
400 E. Stewart Avenue
Las Vegas, Nevada 89101

**Subject: Certificate of Amendment
The Shores No. 1B by Lewis Homes**

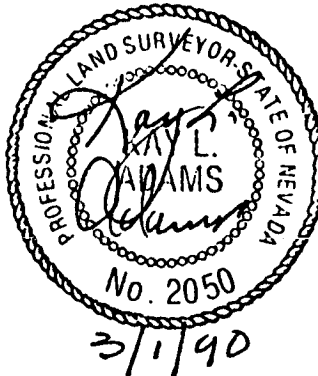
Dear Mr. Lumos:

In accordance with the provisions of N.R.S. No. 278.473, it is hereby requested that the subdivision plat of "The Shores No. 1B by Lewis Homes" filed January 12, 1990 in Book 44, Page 84 of Plats in the Clark County Recorder's Office, Clark County, Nevada, be amended in the following manner:

On Sheet 3 of 4 "The Shores No. 1B by Lewis Homes," Misty Shadows Avenue to be revised to Magnolia Glen Avenue.

Very truly yours,

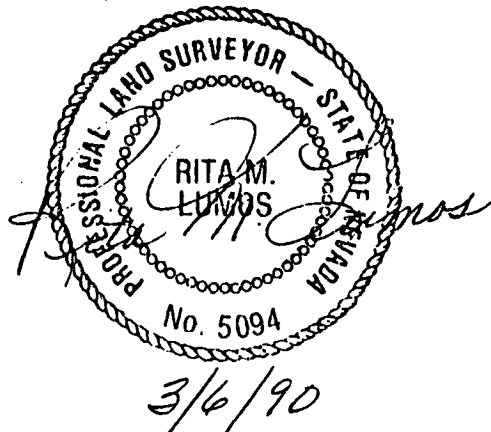
Kay L. Adams
Kay L. Adams
Professional Land Surveyor
P.L.S. #2050



City Surveyor's Certificate

I hereby certify that I have examined the Certificate of Amendment and that the changes to the original documents specified therein are provided for in the applicable sections of N.R.S. 278.010 to 278.630 inclusive, N.R.S. 625.340 to 625.380 inclusive, and local ordinances adopted pursuant thereto, and I am satisfied that this Certificate of Amendment so amends the documents as to make them technically correct.

Rita M. Lumos
Rita M. Lumos
City Surveyor
P.L.S. #5094



CLARK COUNTY, NEVADA
JOAN L. SWIFT, RECORDER
RECORDED AT REQUEST OF:
GC WALLACE INC

03-07-90 10:57 GMA 1
OFFICIAL RECORDS
BOOK: 900307 INST: 00559
FEE: 5.00 RPTT: .00
MAP TYPE PL BOOK/PAGE 044/0084

RETURN TO:

5543.8710C
5543.8720C

February 21, 1990

Rita M. Lumos, P.L.S. 5094
City Surveyor
City of Las Vegas
400 E. Stewart Avenue
Las Vegas, Nevada 89101

Subject: Certificate of Amendment
The Shores No. 1A by Lewis Homes
The Shores No. 1B by Lewis Homes

Dear Ms. Lumos:

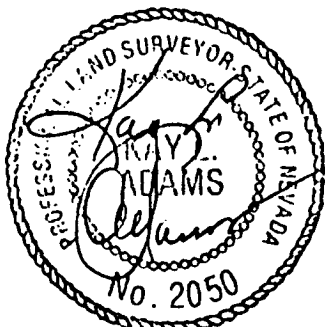
In accordance with the provisions of N.R.S. No. 278.473, it is hereby requested that the subdivision plats of "The Shores No. 1A by Lewis Homes" filed January 10, 1990 in Book 44, Page 82 of Plats in the Clark County Recorder's Office, Clark County, Nevada; and "The Shores No. 1B by Lewis Homes" filed January 12, 1990 in Book 44, Page 84 of Plats in the Clark County Recorder's Office, Clark County, Nevada, be amended in the following manner:

On Sheet 3 of 4 and Sheet 4 of 4 of "The Shores No. 1A by Lewis Homes," the block designated "G" be changed to "H." (See "Exhibit A" - Pages 2, 3, 4 and 5 of 7 pages, attached to and made a part hereof.)

On Sheet 3 of 4 and Sheet 4 of 4 of "The Shores No. 1B by Lewis Homes," the block designated "G" be changed to "H." (See "Exhibit A" - Pages 6 and 7 of 7 pages, attached to and made a part hereof.)

Very truly yours,

Kay L. Adams
Kay L. Adams
Professional Land Surveyor
P.L.S. #2050



2/23/90

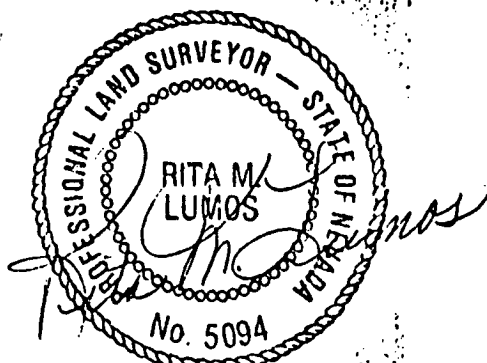
City Surveyor's Certificate

I hereby certify that I have examined the Certificate of Amendment and that the changes to the original documents specified therein are provided for in the applicable sections of N.R.S. 278.010 to 278.630 inclusive, N.R.S. 625.340 to 625.380 inclusive, and local ordinances adopted pursuant thereto, and I am satisfied that this Certificate of Amendment so amends the documents as to make them technically correct.

PAGE 1 OF 7 PAGES

Rita M. Lumos

Rita M. Lumos
City Surveyor
P.L.S. #5094



2/26/90

CLARK COUNTY, NEVADA
JOAN L. SWIFT, RECORDER
RECORDED AT REQUEST OF:

GC WALLCE INC

02-28-90 16:31 GMA 8
BOOK: 900228 INST: 01592

FEE: 12.00 RPTT: .00
CA PLAT

CONFORMED COPY-HAS NOT BEEN COMPARED TO THE ORIGINAL

G.C. WALLACE, PE
MICHAEL RADONOVICH
KAY L. ADAMS, P.S.
GARY J. SPINKELINK

TERRILL H. ADAMS
CALVIN L. BLACK, PE
DANN STUART DAVIS, A.I.A.
JAMES A. DUNDRESTEN, PE
DAVID TRUCKLE, PE
JACK H. MITCHELL, PE
CRAIG A. PRIMAS, PE
MICHAEL D. ROSS, PE
REYNOLD R. THOMAS

I. STEVEN ANDERSON, PE
MICHAEL I. CSIZMADIA, PE
HOWARD L. HARRIS, PE
MARC A. LEAIDINE
ARNE H. WAGLEY

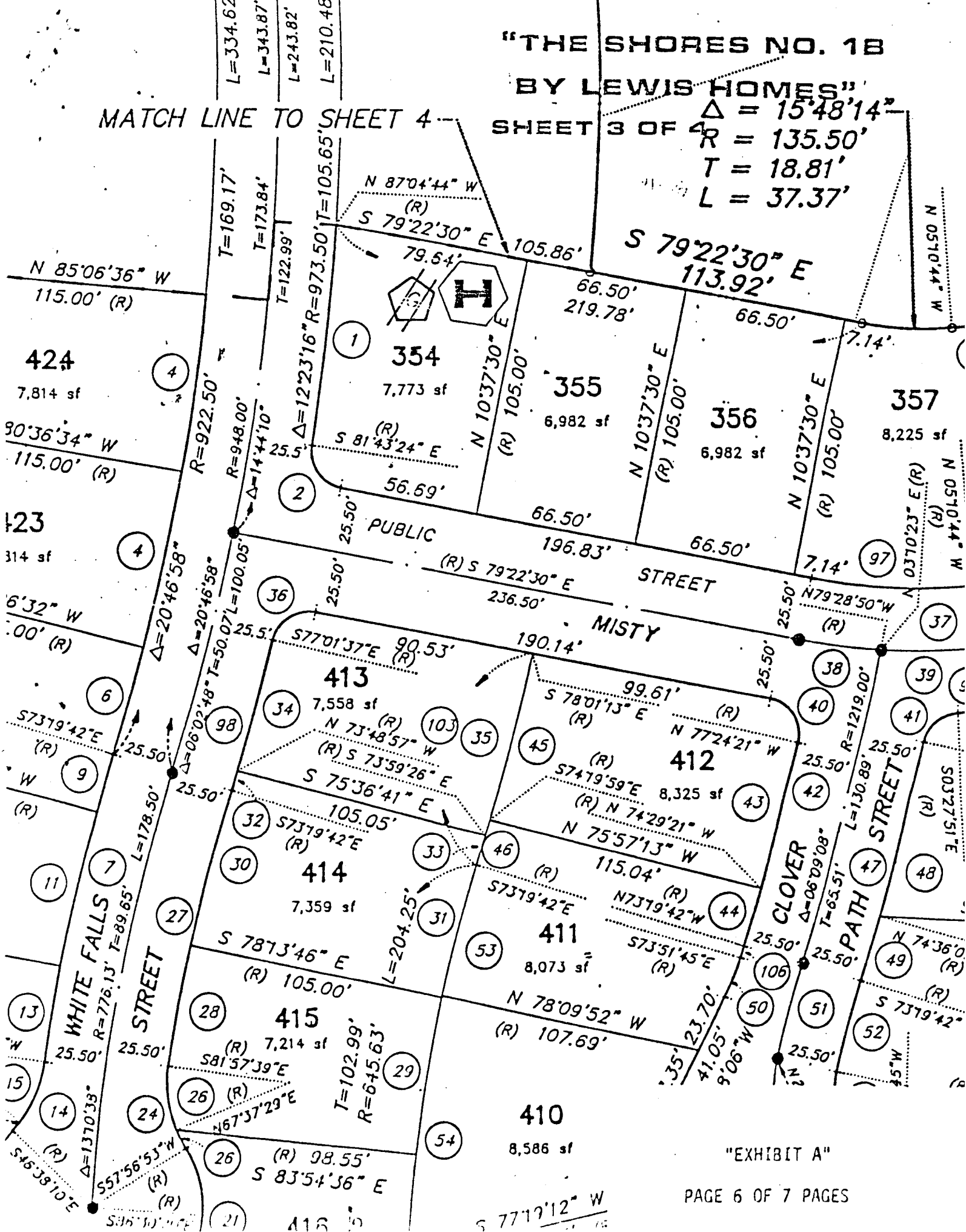
"THE SHORES NO. 1B

BY LEWIS HOMES"

Δ = 15°48'14"
R = 135.50'
T = 18.81'
L = 37.37'

MATCH LINE TO SHEET 4

SHEET 3 OF 4



"EXHIBIT A"

THE SHORES NO. 1-B BY LEWIS HOMES

FEBRUARY 23, 1990

L-21-2,4

BLOCK H	LOT	346	8008	BLUE CASCADE AVENUE	E/W	PUBLIC STREET
		347	8004			
		348	8000			
BLOCK H	LOT	349	2128	WHITE FALLS STREET	N/S	PUBLIC STREET
		350	2124			
		351	2120			
		352	2116			
		353	2112			
BLOCK H	LOT	354	7924	*MISTY-SHADOWS-AVENUE	E/W	PUBLIC STREET
		355	7920	MAGNOLIA GLEN AVENUE		
		356	7916			
		357	7912			
		358	7908			
		359	7904			
		360	7900			
		361	7832			
BLOCK K	LOT	402	7825	RAMBLEWOOD AVENUE	E/W	PUBLIC STREET
		403	7829			
		404	7901			
		405	7905			
		406	7909			
		407	7913			
		408	7917			
		409	7921			
BLOCK K	LOT	410	2009	CLOVER PATH STREET	N/S	PUBLIC STREET
		411	2013			
		412	2017			
BLOCK K	LOT	413	2016	WHITE FALLS STREET	N/S	PUBLIC STREET
		414	2012			
		415	2008			
		416	2004			
		417	2000			
		418	2001			
		419	2005			
		420	2009			
		421	2013			
		422	2017			
		423	2101			
		424	2105			
		425	2109			
		426	2113			
		427	2117			
BLOCK K	LOT	428	8005	BLUE CASCADE AVENUE	E/W	PUBLIC STREET
		429	8009			
BLOCK L	LOT	478	7824	RAMBLEWOOD AVENUE	E/W	PUBLIC STREET
		479	7828			
		480	7900			
		481	7904			
BLOCK L	LOT	482	2012	CLOVER PATH STREET	N/S	PUBLIC STREET
		483	2016			
BLOCK L	LOT	484	7901	*MISTY-SHADOWS-AVENUE	E/W	PUBLIC STREET
		485	7829	MAGNOLIA GLEN AVENUE		
NO ADDRESSES ON:				LAKE MEAD BOULEVARD	E/W	PUBLIC STREET

* Misty Shadows Avenue changed to
MAGNOLIA GLEN AVENUE by Amendment
 3/2/90, G.C. Wallace, Inc.

RG/dr

 Ron Gregory
 Planner

THE SHORES NO. 1-B BY LEWIS HOMES

FEBRUARY 23, 1990

L-21-2,4

BLOCK H	LOT	346	8008	BLUE CASCADE AVENUE	E/W	PUBLIC STREET
		347	8004			
		348	8000			
BLOCK H	LOT	349	2128	WHITE FALLS STREET	N/S	PUBLIC STREET
		350	2124			
		351	2120			
		352	2116			
		353	2112			
BLOCK H	LOT	354	7924	*MISTY-SHADOWS-AVENUE	E/W	PUBLIC STREET
		355	7920	MAGNOLIA GLEN AVENUE		
		356	7916			
		357	7912			
		358	7908			
		359	7904			
		360	7900			
		361	7832			
BLOCK K	LOT	402	7825	RAMBLEWOOD AVENUE	E/W	PUBLIC STREET
		403	7829			
		404	7901			
		405	7905			
		406	7909			
		407	7913			
		408	7917			
		409	7921			
BLOCK K	LOT	410	2009	CLOVER PATH STREET	N/S	PUBLIC STREET
		411	2013			
		412	2017			
BLOCK K	LOT	413	2016	WHITE FALLS STREET	N/S	PUBLIC STREET
		414	2012			
		415	2008			
		416	2004			
		417	2000			
		418	2001			
		419	2005			
		420	2009			
		421	2013			
		422	2017			
		423	2101			
		424	2105			
		425	2109			
		426	2113			
		427	2117			
BLOCK K	LOT	428	8005	BLUE CASCADE AVENUE	E/W	PUBLIC STREET
		429	8009			
BLOCK L	LOT	478	7824	RAMBLEWOOD AVENUE	E/W	PUBLIC STREET
		479	7828			
		480	7900			
		481	7904			
BLOCK L	LOT	482	2012	CLOVER PATH STREET	N/S	PUBLIC STREET
		483	2016			
BLOCK L	LOT	484	7901	*MISTY-SHADOWS-AVENUE	E/W	PUBLIC STREET
		485	7829	MAGNOLIA GLEN AVENUE		
NO ADDRESSES ON:				LAKE MEAD BOULEVARD	E/W	PUBLIC STREET

* Misty Shadows Avenue changed to
MAGNOLIA GLEN AVENUE by Amendment
 3/2/90, G.C. Wallace, Inc.

RG/dr

 Ron Gregory
 Planner