

SIENNA RIDGE - UNIT 1

NOVEMBER 8, 1990

Q-5-3; Q-6-4

BLOCK 1	LOT	1	9325	SIENNA RIDGE DRIVE	E/W PRIVATE DRIVE
		2	9321		
		3	9317		
		4	9313		
		5	9309		
		6	9305		
		7	9301		
BLOCK 1	LOT	8	9289	SUN TERRACE COURT	E/W PRIVATE DRIVE
		9	9285		
		10	9281		
		11	9280		
		12	9284		
		13	9288		
BLOCK 1	LOT	14	1528	SUN COPPER DRIVE	N/S PRIVATE DRIVE
		15	1524		
		16	1520		
		17	1516		
		18	1512		
		19	1508		
		20	1504		
		21	1500		
		22	1432		
		23	1428		
		24	1424		
		25	1420		
		26	1416		
BLOCK 2	LOT	49	9328	SIENNA VISTA DRIVE	E/W PRIVATE DRIVE
		50	9332		
		51	9336		
		52	9340		
		53	9344		
BLOCK 2	LOT	54	9328	SIENNA RIDGE DRIVE	E/W PRIVATE DRIVE
		55	9332		
		56	9336		
		57	9337		
...		58	9333		
		59	9329		

...BLOCK 2, LOT 58; 9333 SIENNA RIDGE DRIVE, AND
 LOT 59; 9329 SIENNA RIDGE DRIVE, WERE REVERTED
 TO LOT 59 ONLY. SEE REVERSIONARY MAP OF SIENNA
 RIDGE UNIT NO. 1, RECORDED APRIL 15, 1993.

SIENNA RIDGE - UNIT 1


NOVEMBER B, 1990

Q-5-3; Q-6-4

BLOCK 3	LOT	75	1429	SUN COPPER DRIVE	N/S	PRIVATE DRIVE
		76	1421			
BLOCK 4	LOT	89	9329	SIENNA VISTA DRIVE	E/W	PRIVATE DRIVE
		90	9333			
		91	9337			
		92	9341			
BLOCK 4	LOT	93	9324	SIENNA RIDGE DRIVE	E/W	PRIVATE DRIVE
		94	9320			
		95	9316			
		96	9312			
		97	9308			
		98	9304			
		99	9300			
BLOCK 4	LOT	100	1537	SUN COPPER DRIVE	N/S	PRIVATE DRIVE
		101	1533			
		102	1529			
		103	1521			
		104	1517			
		105	1513			
		106	1509			
		107	1505			
		108	1501			
COMMON LOTS:	A		9312	SIENNA VISTA DRIVE	E/W	PRIVATE DRIVE
	B		9316			

STREET WITH NO ADDRESSES:

RED HILLS ROAD
PREAKNESS PASS

 LES COMEAU,
SENIOR PLANNER

LC.dr

SIENNA RIDGE - UNIT 1

NOVEMBER 8, 1990

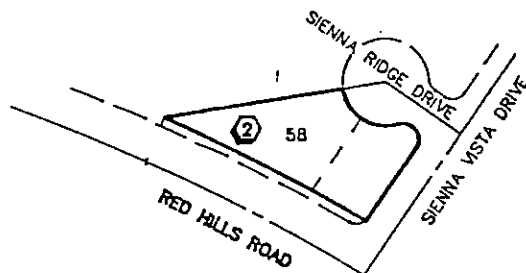
Q-5-3; Q-6-4

BLOCK 1	LOT	1	9325	SIENNA RIDGE DRIVE	E/W	PRIVATE DRIVE
		2	9321			
		3	9317			
		4	9313			
		5	9309			
		6	9305			
		7	9301			
BLOCK 1	LOT	8	9289	SUN TERRACE COURT	E/W	PRIVATE DRIVE
		9	9285			
		10	9281			
		11	9280			
		12	9284			
		13	9288			
BLOCK 1	LOT	14	1528	SUN COPPER DRIVE	N/S	PRIVATE DRIVE
		15	1524			
		16	1520			
		17	1516			
		18	1512			
		19	1508			
		20	1504			
		21	1500			
		22	1432			
		23	1428			
		24	1424			
		25	1420			
		26	1416			
BLOCK 2	LOT	49	9328	SIENNA VISTA DRIVE	E/W	PRIVATE DRIVE
		50	9332			
		51	9336			
		52	9340			
		53	9344			
BLOCK 2	LOT	54	9328	SIENNA RIDGE DRIVE	E/W	PRIVATE DRIVE
		55	9332			
		56	9336			
		57	9337			
		...	58			
	59	9329				

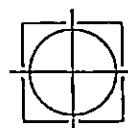
***BLOCK 2, LOT 58; 9333 SIENNA RIDGE DRIVE, AND LOT 59; 9329 SIENNA RIDGE DRIVE, WERE REVERTED TO LOT 59 ONLY. SEE REVERSIONARY MAP OF SIENNA RIDGE UNIT NO. 1, RECORDED APRIL 15, 1993.

SIENNA RIDGE

UNIT No.1 REVISIONARY MAP



SCALE: 1" = 200'



ESI ENGINEERS AND
SURVEYORS INC.
PLANNERS • CONSULTING ENGINEERS • SURVEYORS

7018 W. CHARLESTON BLVD. • LAS VEGAS, NEVADA 89117 • 17021363-6415

SIENNA RIDGE - UNIT 1


NOVEMBER 8, 1990

Q-5-3; Q-6-4

BLOCK 3	LOT	75	1429	SUN COPPER DRIVE	N/S	PRIVATE DRIVE
		76	1421			
BLOCK 4	LOT	89	9329	SIENNA VISTA DRIVE	E/W	PRIVATE DRIVE
		90	9333			
		91	9337			
		92	9341			
BLOCK 4	LOT	93	9324	SIENNA RIDGE DRIVE	E/W	PRIVATE DRIVE
		94	9320			
		95	9316			
		96	9312			
		97	93DB			
		98	9304			
		99	9300			
BLOCK 4	LOT	100	1537	SUN COPPER DRIVE	N/S	PRIVATE DRIVE
		101	1533			
		102	1529			
		103	1521			
		104	1517			
		105	1513			
		106	1509			
		107	1505			
		10B	1501			
COMMON LOTS:	A		9312	SIENNA VISTA DRIVE	E/W	PRIVATE DRIVE
	B		9316			

STREET WITH NO ADDRESSES:

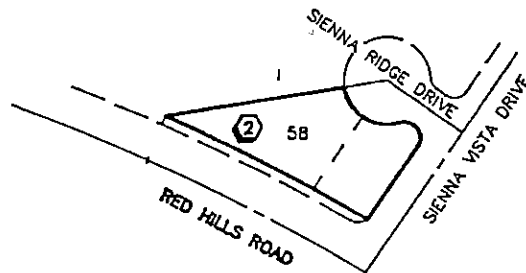
RED HILLS ROAD
PREAKNESS PASS

 LES COMEAU,
SENIOR PLANNER

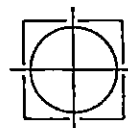
LC.dr

SIENNA RIDGE

UNIT No.1 REVISIONARY MAP



SCALE: 1" = 200'



ESI ENGINEERS AND
SURVEYORS INC.
PLANNERS • CONSULTING ENGINEERS • SURVEYORS

7018 W. CHARLESTON BLVD. • LAS VEGAS, NEVADA 89117 • 17021363-6415



DEPARTMENT OF COMMUNITY PLANNING AND DEVELOPMENT

RPD SETBACK

Date: 3/30/94

Subdivision: Sienna Ridge Unit 1

District Map(s): Q-5-2 Q-6-4

Zoning: R-PD7 Zoning File No. Z-139-88

APN(S): 163-05-211-001 to 034 163-06-613-003 to 022

Setbacks:

FRONT	REAR	SIDE(S)	CORNER
18'	15'	5'	10'

Set By: Z-139-88(7) Plot Plan Review 5/22/90

Deviations: _____
