

TERRASANO III

Recorded in Book 126 Page 043 of Plats

MASTER SITE ADDRESS: 9430 VICTORY GARDEN AVE

Fire Department District Map Number:

01415-47

<u>Block</u>	<u>Lot</u>	<u>Address</u>
1	1	9424 VICTORY GARDEN AVE
	2	9420
	3	9416
	4	9412
	5	9408
	6	9404
	7	7644 MORNING WATER ST
	8	7640
	9	7636
	10	7632
	11	7628
	12	7624
	13	7620
	14	7616
	15	9405 SAYAN CIR
	16	9409
	17	9413
	18	9417
	19	9421
	20	9425
2	21	7617 MORNING WATER ST
	22	7621
1	23	7629
	24	7633
	25	7637
	26	7641


Robert T. Summerfield, Planner I

TERRASANO III

Recorded in Book 126 Page 043 of Plats

MASTER SITE ADDRESS: 9430 VICTORY GARDEN AVE

Fire Department District Map Number:

01415-47

<u>Block</u>	<u>Lot</u>	<u>Address</u>
1	1	9424 VICTORY GARDEN AVE
	2	9420
	3	9416
	4	9412
	5	9408
	6	9404
	7	7644 MORNING WATER ST
	8	7640
	9	7636
	10	7632
	11	7628
	12	7624
	13	7620
	14	7616
	15	9405 SAYAN CIR
	16	9409
	17	9413
	18	9417
	19	9421
	20	9425
2	21	7617 MORNING WATER ST
	22	7621
1	23	7629
	24	7633
	25	7637
	26	7641


Robert T. Summerfield, Planner I

TERRASANO III

Recorded in Book 126 Page 043 of Plats

MASTER SITE ADDRESS: 9430 VICTORY GARDEN AVE

Fire Department District Map Number:

01415-47

<u>Block</u>	<u>Lot</u>	<u>Address</u>
1	1	9424 VICTORY GARDEN AVE
	2	9420
	3	9416
	4	9412
	5	9408
	6	9404
	7	7644 MORNING WATER ST
	8	7640
	9	7636
	10	7632
	11	7628
	12	7624
	13	7620
	14	7616
	15	9405 SAYAN CIR
	16	9409
	17	9413
	18	9417
	19	9421
	20	9425
2	21	7617 MORNING WATER ST
	22	7621
1	23	7629
	24	7633
	25	7637
	26	7641


Robert T. Summerfield, Planner I

Handwritten signature

TERRASANO III

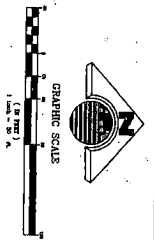
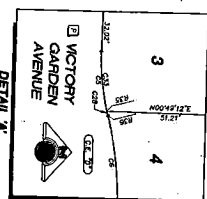
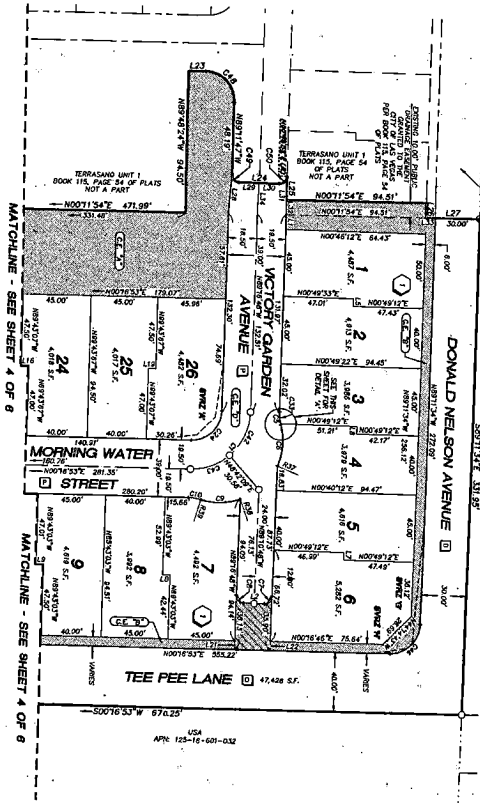
A MEMBER AND RESUBDIVISION OF COMMON LOT "C" AS SHOWN IN
 OF THIS RANGE 34 OF PLATS TOGETHER WITH THE EAST HALF (E 1/2)
 (SW 1/4) OF THE NORTHEAST QUARTER IN THE SOUTHWEST QUARTER
 TOWNSHIP 18 SOUTH, RANGE 08 EAST, MDL. CLARK COUNTY, NEVADA.

SECTION 19
 BOOK 00210, PAGE NO. 09612
 CLARK COUNTY, NEVADA

APR. 12-18-81-311

SECTION 18
 BOOK 00210, PAGE NO. 09612
 CLARK COUNTY, NEVADA

SECTION 17
 BOOK 00210, PAGE NO. 09612
 CLARK COUNTY, NEVADA



MAP NOTES

1. COMMON LOTS "X", "Y" & "Z" SHOWN HEREON ARE U.T.C. PRIVATE HOMEOWNERS' ASSOCIATION LOTS AND ARE TO BE MAINTAINED BY THE HOMEOWNERS' ASSOCIATION.
2. COMMON LOT "A" IS SHOWN HEREON AS A PUBLIC SQUARE HOMEOWNERS' ASSOCIATION LOT AND SHALL BE MAINTAINED BY THE HOMEOWNERS' ASSOCIATION.
3. PRIVATE STREETS AND PRIVATE DRIVE SHOWN ARE PUBLIC UTILITY LINES AND SHALL BE MAINTAINED BY THE HOMEOWNERS' ASSOCIATION.
4. PRIVATE DRIVE SHOWN IS TO BE MAINTAINED BY THE HOMEOWNERS' ASSOCIATION.
5. SOME COMMON LOT AREAS, SEE SHEET 3 OF 8.
6. PRIVATE UTILITY LINES SHOWN ARE FOR THE ELECTRICAL, WATER AND SEWER SYSTEMS AND ARE TO BE MAINTAINED BY THE HOMEOWNERS' ASSOCIATION.
7. COMMON LOT "A" IS SHOWN HEREON AS A PUBLIC SQUARE HOMEOWNERS' ASSOCIATION LOT AND SHALL BE MAINTAINED BY THE HOMEOWNERS' ASSOCIATION.
8. PRIVATE STREETS AND PRIVATE DRIVE SHOWN ARE PUBLIC UTILITY LINES AND SHALL BE MAINTAINED BY THE HOMEOWNERS' ASSOCIATION.
9. PRIVATE DRIVE SHOWN IS TO BE MAINTAINED BY THE HOMEOWNERS' ASSOCIATION.
10. PRIVATE UTILITY LINES SHOWN ARE FOR THE ELECTRICAL, WATER AND SEWER SYSTEMS AND ARE TO BE MAINTAINED BY THE HOMEOWNERS' ASSOCIATION.

TOTAL AREA	42.16 AC.
TOTAL COMMON ELEMENTS	4.00 AC.

HORIZON SURVEYS

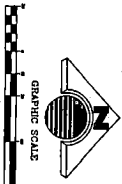
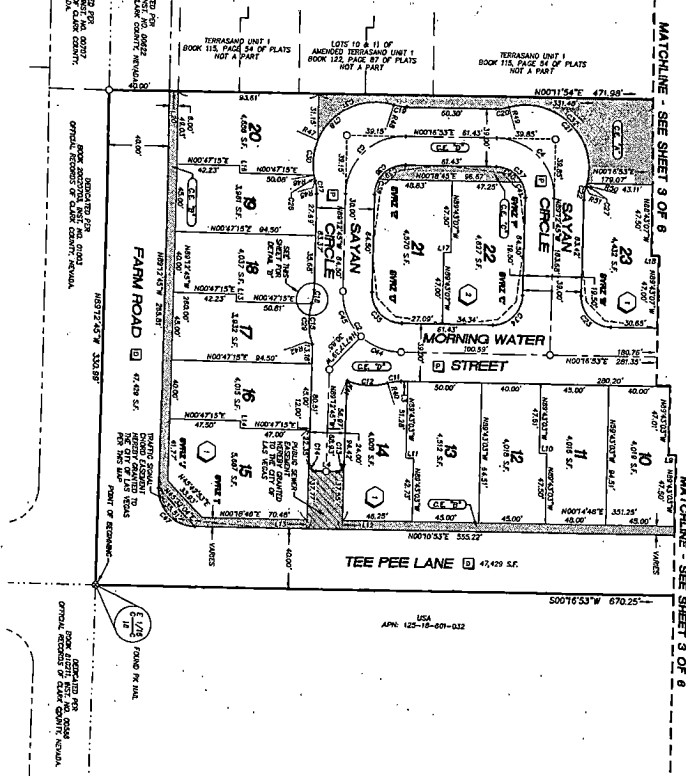
1000 W. HORIZON AVENUE
 SUITE 100
 LAS VEGAS, NEVADA 89102
 (702) 735-1100

DATE: 11/18/81
 DRAWN BY: R. HARRIS
 CHECKED BY: J. HARRIS
 1" = 8'

Handwritten signature

FINAL MAP OF TERRASANO III

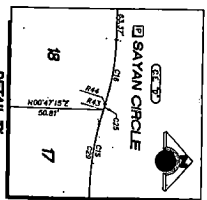
A MAPPER AND RESUBDIVISION OF THE COMMUNITY OF TERRASANO III, AS SHOWN IN BOOK 122, PAGE 87 OF PLATS, TOGETHER WITH THE EAST HALF (1/2) OF (1/4) OF THE QUARTER (1/4) OF THE SOUTHWEST QUARTER TOWNSHIP 9 SOUTH, RANGE 90 EAST, MERIDIAN 116 CITY OF LAS VEGAS, CLARK COUNTY, NEVADA.



MAP NOTES

1. COLLISION NOTICES IN "X" OR "Y" DIMENSIONS MEAN THE COLLISION POINTS ARE TO BE LOCATED BY THE HOMEOWNER'S ASSOCIATION.
2. COLLISION POINTS TO BE LOCATED BY THE HOMEOWNER'S ASSOCIATION.
3. COLLISION POINTS TO BE LOCATED BY THE HOMEOWNER'S ASSOCIATION.
4. COLLISION POINTS TO BE LOCATED BY THE HOMEOWNER'S ASSOCIATION.
5. COLLISION POINTS TO BE LOCATED BY THE HOMEOWNER'S ASSOCIATION.
6. COLLISION POINTS TO BE LOCATED BY THE HOMEOWNER'S ASSOCIATION.
7. COLLISION POINTS TO BE LOCATED BY THE HOMEOWNER'S ASSOCIATION.
8. COLLISION POINTS TO BE LOCATED BY THE HOMEOWNER'S ASSOCIATION.
9. COLLISION POINTS TO BE LOCATED BY THE HOMEOWNER'S ASSOCIATION.
10. COLLISION POINTS TO BE LOCATED BY THE HOMEOWNER'S ASSOCIATION.

TOTAL AREA:	48.00 AC.
TOTAL LOTS:	17
TOTAL COMMON ELEMENTS:	0



HORIZON SURVEYS
 1100 W. WASHINGTON AVENUE, SUITE 200
 LAS VEGAS, NEVADA 89102
 (702) 735-1100
 WWW.HORIZONSURVEYS.COM

DATE: 11/11/11
 DRAWN BY: J. HARRIS
 CHECKED BY: J. HARRIS
 APPROVED BY: J. HARRIS
 4/11/11