

MIRALESTE AT SUMMERLIN - UNIT 2

Recorded in Book 109 Page 89 of Plats

200 Scale Map Location: K-35-7

Fire Dept. District Map # 2413:73

MASTER SITE ADDRESS: 942 ROSEBERRY DR

BLOCK 1	LOT	26	882	LA SCONSA DR	N/S	PUBLIC STREET
		27	890			
BLOCK 1	LOT	28	897	ARMANDITO OR	N/S	PUBLIC STREET
		29	889			
		30	881			
		31	882			
		32	890			
		33	898			
		34	906			
		35	914			
		36	922			
		37	930			
		38	938			
		39	946			
		40	954			
		41	962			
		42	970			
		43	978			
BLOCK 1	LOT	44	995	ROSEBERRY DR	N/S	PUBLIC STREET
		45	989			
		46	983			
		47	977			
		48	971			
		49	965			
		50	959			
		51	953			
		52	947			
		53	941			
BLOCK 2	LOT	65	946	ROSEBERRY DR	N/S	PUBLIC STREET
		66	954			
		67	962			
		68	970			
		69	978			
BLOCK 2	LOT	70	971	ARMANDITO DR	N/S	PUBLIC STREET
		71	965			
		72	959			
		73	953			
		74	947			
		75	941			
		76	935			
BLOCK 2	LOT	77	11509	VELICATA CT	E/W	PUBLIC STREET
		78	11519			
		79	11529			
		80	11539			

MIRALESTE AT SUMMERLIN - UNIT 2

BLOCK 2	LOT	81	11549	VELICATA CT	E/W	PUBLIC STREET
		82	11559			
		83	11569			
		84	11579			
		85	11580			
		86	11570			
		87	11560			
		88	11550			
		89	11540			
		90	11530			
		91	11520			
		92	11510			
Common Area	A	934	ARMANDITO DR	N/S	PUBLIC STREET	

ORIGINAL DATE: 4/01/2003

CITY OF LAS VEGAS
PLANNING & DEVELOPMENT DEPARTMENT


P D MURPHY, PLANNER I

MIRALESTE AT SUMMERLIN - UNIT 2

Recorded in Book 109 Page 89 of Plats

200 Scale Map Location: K-35-7

Fire Dept. District Map # 2413:73

MASTER SITE ADDRESS: 942 ROSEBERRY DR

BLOCK 1	LOT	26	882	LA SCONSA DR	N/S	PUBLIC STREET
		27	890			
BLOCK 1	LOT	28	897	ARMANDITO DR	N/S	PUBLIC STREET
		29	889			
		30	881			
		31	882			
		32	890			
		33	898			
		34	906			
		35	914			
		36	922			
		37	930			
		38	938			
		39	946			
		40	954			
		41	962			
		42	970			
		43	978			
BLOCK 1	LOT	44	995	ROSEBERRY DR	N/S	PUBLIC STREET
		45	989			
		46	983			
		47	977			
		48	971			
		49	965			
		50	959			
		51	953			
		52	947			
		53	941			
BLOCK 2	LOT	65	946	ROSEBERRY DR	N/S	PUBLIC STREET
		66	954			
		67	962			
		68	970			
		69	978			
BLOCK 2	LOT	70	971	ARMANDITO DR	N/S	PUBLIC STREET
		71	965			
		72	959			
		73	953			
		74	947			
		75	941			
		76	935			
BLOCK 2	LOT	77	11509	VELICATA CT	E/W	PUBLIC STREET
		78	11519			
		79	11529			
		80	11539			

MIRALESTE AT SUMMERLIN - UNIT 2

BLOCK 2	LOT	81	11549	VELICATA CT	EW	PUBLIC STREET
		82	11559			
		83	11569			
		84	11579			
		85	11580			
		86	11570			
		87	11560			
		88	11550			
		89	11540			
		90	11530			
		91	11520			
		92	11510			
Common Area	A	934	ARMANDITO DR	N/S	PUBLIC STREET	

ORIGINAL DATE: 4/01/2003

CITY OF LAS VEGAS
PLANNING & DEVELOPMENT DEPARTMENT


P D MURPHY, PLANNER I

MIRALESTE AT SUMMERLIN - UNIT 2

Recorded in Book 109 Page 89 of Plats

200 Scale Map Location: K-35-7

Fire Dept. District Map # 2413:73

MASTER SITE ADDRESS: 942 RDSEBERRY DR

BLOCK 1	LDT	26	882	LA SCONSA DR	N/S	PUBLIC STREET
		27	890			
BLOCK 1	LOT	28	897	ARMANDITO DR	N/S	PUBLIC STREET
		29	889			
		30	881			
		31	882			
		32	890			
		33	898			
		34	906			
		35	914			
		36	922			
		37	930			
		38	938			
		39	946			
		40	954			
		41	962			
		42	970			
		43	978			
BLOCK 1	LOT	44	995	ROSEBERRY DR	N/S	PUBLIC STREET
		45	989			
		46	983			
		47	977			
		48	971			
		49	965			
		50	959			
		51	953			
		52	947			
		53	941			
BLOCK 2	LOT	65	946	ROSEBERRY DR	N/S	PUBLIC STREET
		66	954			
		67	962			
		68	970			
		69	978			
BLOCK 2	LOT	70	971	ARMANDITO OR	N/S	PUBLIC STREET
		71	965			
		72	959			
		73	953			
		74	947			
		75	941			
		76	935			
BLOCK 2	LOT	77	11509	VELICATA CT	EW	PUBLIC STREET
		78	11519			
		79	11529			
		80	11539			

MIRALESTE AT SUMMERLIN - UNIT 2

BLOCK 2	LOT	81	11549	VELICATA CT	EW	PUBLIC STREET
		82	11559			
		83	11569			
		84	11579			
		85	11580			
		86	11570			
		87	11560			
		88	11550			
		89	11540			
		90	11530			
		91	11520			
		92	11510			
Common Area	A	934	ARMANDITO DR	N/S	PUBLIC STREET	

ORIGINAL OATE: 4/01/2003

CITY OF LAS VEGAS
PLANNING & DEVELOPMENT DEPARTMENT


P D MURPHY, PLANNER I

MIRALESTE AT SUMMERLIN - UNIT 2

Recorded in Book 109 Page 89 of Plats

200 Scale Map Location: K-35-7

Fire Dept. District Map # 2413:73

MASTER SITE ADDRESS: 942 ROSEBERRY DR

BLOCK 1	LOT	26	882	LA SCONSA DR	N/S	PUBLIC STREET
		27	890			
BLOCK 1	LOT	28	897	ARMANDITO OR	N/S	PUBLIC STREET
		29	889			
		30	881			
		31	882			
		32	890			
		33	898			
		34	906			
		35	914			
		36	922			
		37	930			
		38	938			
		39	946			
		40	954			
		41	962			
		42	970			
		43	978			
BLOCK 1	LOT	44	995	ROSEBERRY DR	N/S	PUBLIC STREET
		45	989			
		46	983			
		47	977			
		48	971			
		49	965			
		50	959			
		51	953			
		52	947			
		53	941			
BLOCK 2	LOT	65	946	ROSEBERRY DR	N/S	PUBLIC STREET
		66	954			
		67	962			
		68	970			
		69	978			
BLOCK 2	LOT	70	971	ARMANDITO DR	N/S	PUBLIC STREET
		71	965			
		72	959			
		73	953			
		74	947			
		75	941			
		76	935			
BLOCK 2	LOT	77	11509	VELICATA CT	E/W	PUBLIC STREET
		78	11519			
		79	11529			
		80	11539			

MIRALESTE AT SUMMERLIN - UNIT 2

BLOCK 2	LOT	81	11549	VELICATA CT	EW	PUBLIC STREET
		82	11559			
		83	11569			
		84	11579			
		85	11580			
		86	11570			
		87	11560			
		88	11550			
		89	11540			
		90	11530			
		91	11520			
		92	11510			
Common Area	A	934	ARMANDITO DR	N/S	PUBLIC STREET	

ORIGINAL OATE: 4/01/2003

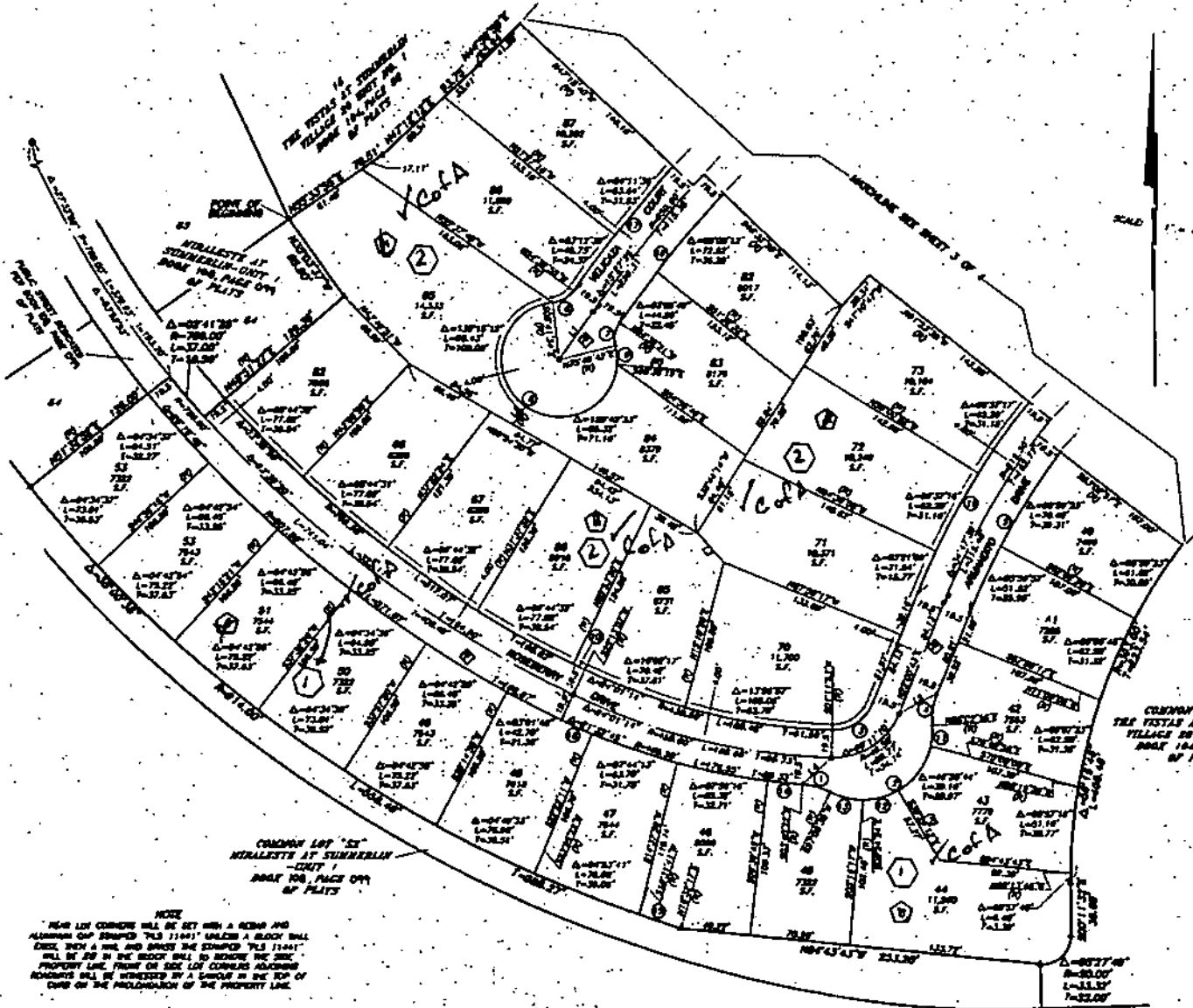
CITY OF LAS VEGAS
PLANNING & DEVELOPMENT DEPARTMENT


P D MURPHY, PLANNER I

FINAL MAP OF MIRALESTE AT SUMMERLIN-UNIT 2

A COMMON INTEREST COMMUNITY

BEING A SUBDIVISION OF A PORTION OF LOT 15 IN BLOCK "D" OF "THE VISTAS AT SUMMERLIN VILLAGE 20 UNIT NO. 1" AS SHOWN BY MAP THEREOF ON FILE IN BOOK 104, PAGE 88 OF PLATS IN THE CLARK COUNTY RECORDER'S OFFICE, CLARK COUNTY, NEVADA, LYING WITHIN THE SOUTHWEST QUARTER (SW 1/4) OF SECTION 35, TOWNSHIP 20 SOUTH, RANGE 59 EAST, M.D.M., CITY OF LAS VEGAS, CLARK COUNTY, NEVADA



LEGEND

- SET TYPE II MONUMENT STAMPED & NUMBERED PLS 11441 WITH TYPE III MONUMENT SET IN TOP OF CURB (UNLESS OTHERWISE NOTED)
- ▲ SET 5/8" IRON AND ALUM. STAMPED PLS 11441
- SET TYPE II MONUMENT PER BOOK 104 PAGE 99 OF PLATS
- ① LOT NUMBER
- CURVE NUMBER
- LI LINE NUMBER
- SUBDIVISION BOUNDARY LINE
- STREET CENTERLINE
- SIDE WALKWAY REVISION EDGE LINE
- EASEMENT LINE
- MESH LINE
- H.O.A. HOMEOWNERS ASSOCIATION
- S.F. SQUARE FEET
- 800' OFFICIAL RECORDS
- 1' PAVED/PAVEMENT ACCESS EASEMENT SHOWN TO THE CITY OF LAS VEGAS PER THIS PLAT (TO BE APPROVED BY THE HOMEOWNER)
- ◆ PUBLIC STREET DEDICATED FOR THIS PLAT
- S.W.A.E. SIDE WALKWAY REVISION EDGE
- ⬡ BLOCK LETTER

① / C.O.F.A

LINE	BEARING	DISTANCE
1	N 89° 57' 00" W	11.70
2	S 89° 57' 00" E	11.70
3	S 0° 00' 00" E	11.70
4	N 89° 57' 00" W	11.70
5	S 89° 57' 00" E	11.70
6	S 0° 00' 00" E	11.70
7	N 89° 57' 00" W	11.70
8	S 89° 57' 00" E	11.70
9	S 0° 00' 00" E	11.70
10	N 89° 57' 00" W	11.70
11	S 89° 57' 00" E	11.70
12	S 0° 00' 00" E	11.70
13	N 89° 57' 00" W	11.70
14	S 89° 57' 00" E	11.70
15	S 0° 00' 00" E	11.70
16	N 89° 57' 00" W	11.70
17	S 89° 57' 00" E	11.70
18	S 0° 00' 00" E	11.70
19	N 89° 57' 00" W	11.70
20	S 89° 57' 00" E	11.70
21	S 0° 00' 00" E	11.70
22	N 89° 57' 00" W	11.70
23	S 89° 57' 00" E	11.70
24	S 0° 00' 00" E	11.70
25	N 89° 57' 00" W	11.70
26	S 89° 57' 00" E	11.70
27	S 0° 00' 00" E	11.70
28	N 89° 57' 00" W	11.70
29	S 89° 57' 00" E	11.70
30	S 0° 00' 00" E	11.70

CURVE	PIVOT	ARC	LENGTH	BEARING
1	11.70	90.00	11.70	89.97
2	11.70	90.00	11.70	0.03
3	11.70	90.00	11.70	89.97
4	11.70	90.00	11.70	0.03
5	11.70	90.00	11.70	89.97
6	11.70	90.00	11.70	0.03
7	11.70	90.00	11.70	89.97
8	11.70	90.00	11.70	0.03
9	11.70	90.00	11.70	89.97
10	11.70	90.00	11.70	0.03
11	11.70	90.00	11.70	89.97
12	11.70	90.00	11.70	0.03
13	11.70	90.00	11.70	89.97
14	11.70	90.00	11.70	0.03
15	11.70	90.00	11.70	89.97
16	11.70	90.00	11.70	0.03
17	11.70	90.00	11.70	89.97
18	11.70	90.00	11.70	0.03
19	11.70	90.00	11.70	89.97
20	11.70	90.00	11.70	0.03
21	11.70	90.00	11.70	89.97
22	11.70	90.00	11.70	0.03
23	11.70	90.00	11.70	89.97
24	11.70	90.00	11.70	0.03
25	11.70	90.00	11.70	89.97
26	11.70	90.00	11.70	0.03
27	11.70	90.00	11.70	89.97
28	11.70	90.00	11.70	0.03
29	11.70	90.00	11.70	89.97
30	11.70	90.00	11.70	0.03

NOTE
 NEW LOT CORNERS WILL BE SET WITH A IRON AND ALUMINUM CAP STAMPED PLS 11441 UNLESS A BLOCK WALL EXIST, THEN A WALL AND BRASS THE STAMPED PLS 11441 WILL BE SET IN THE BLOCK WALL TO REINFORCE THE SIDE PROPERTY LINE. FRONT OR SIDE LOT CORNERS ADJOINING ROADWAYS WILL BE WITNESSED BY A SMOULDS IN THE TOP OF CURB ON THE PROLONGATION OF THE PROPERTY LINE.

2
151 CA

471.005

May 1, 2003

Ms. Rita M. Lumos
City of Las Vegas Survey
3001 Ronemus Drive
Las Vegas, Nevada 89128

Subject: *Certificate of Amendment for Final Map*

Location: *Lying within Section 35, Township 20, South, Range 59 East, M.D.M.
City of Las Vegas, Clark County, Nevada.*

Dear Ms. Lumos:

In accordance with the provisions of N.R.S. No. 278.473, it is hereby requested that the Final Map of "Miraleste at Summerlin Unit 2", filed April 1, 2003, in Book 109, Page 89, of Plats in the County Recorder's Office, Clark County, Nevada, be amended in the following manner:

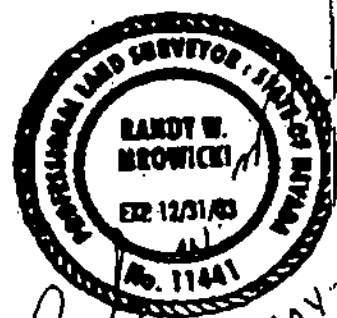
1. On sheets 3 and 4, correct Block "A" to read Block "2".
2. On sheets 3 and 4, correct Block "B" to read Block "1".

Sincerely,

G. C. WALLACE, INC.

Randy W. Mrowicki
Professional Land Surveyor
Nevada License No. 11441

jr



Randy
01-MAY-2003

471.005
Miraleste at Summerlin Unit No. 2
May 1, 2003

City Surveyor's Certificate

I hereby certify that I have examined the Certificate of Amendment and that the changes to the original document specified thereon are provided for in applicable sections of N.R.S. 278.010 to 278.630 inclusive, N.R.S. 625.340 to 625.380, inclusive, and local ordinances adopted pursuant thereto, and I am satisfied that this Certificate of Amendment so amends or corrects the document as to make it technically correct.

Rita M. Lumos
Rita M. Lumos, P.L.S. 5/12/03
City Surveyor
City of Las Vegas, Nevada
Nevada License No. 5094

Return to:
G.C. Wallace, Inc.
1555 So. Rainbow Blvd.
Las Vegas, Nevada 89146
Attn: Survey Dept.

CLACK COUNTY, NEVADA
RECORDED AT REQUEST OF: G.C. WALLACE INC
05-19-2003 15:42 PUN PAGE COUNT: 2
BOOK/INSTR: 20030519-02973 FEE: 15.00
PLAT/CA RPT: .00
RECEIPT/CONF COPY-HAS NOT BEEN COMPARED TO THE ORIG