

SAPPHIRE POINTE

Recorded in Book 80 Page 6 of Plats

200 Scale Map Location: L-7-4

Fire Dept. District Map # 1915:48

MASTER SITE ADDRESS: 9402 W. GOWAN RD

BLOCK 1	LOT	1	3600	WILD WILLOW ST	N/S	PUBLIC STREET
		2	3604			
		3	3608			
		4	3612			
		5	3616			
		6	3620			
		7	3624			
		8	3628			
		9	3632			
		10	3636			
		11	3640			
		12	3644			
		13	3648			
		14	3652			
BLOCK 2	LOT	28	9449	VISTA RIDGE AVE	E/W	PUBLIC STREET
		29	9445			
		30	9441			
		31	9437			
BLOCK 2	LOT	32	3645	WALNUT WOOD ST	N/S	PUBLIC STREET
		33	3641			
		34	3637			
		35	3633			
		36	3629			
		37	3625			
		38	3621			
		39	3617			
		BLOCK 2	LOT			
41	9428					
42	9432					
43	9436					
44	9437					
45	9433					
46	9429					
47	9425					
48	9421					
49	9417					
50	9413					
51	9409					
52	9405					
53	9401					
BLOCK 3	LOT	54	3616	WALNUT WOOD ST	N/S	PUBLIC STREET
		55	3620			
		56	3624			
		57	3628			
		58	3632			

SAPPHIRE POINTE

BLOCK 3	LOT	59	3636	WALNUT WOOD ST	N/S	PUBLIC STREET
		60	3640			
		61	3644			
BLOCK 3	LOT	62	3645	WILD WILLOW ST	N/S	PUBLIC STREET
		63	3641			
		64	3637			
		65	3633			
		66	3629			
		67	3625			
		68	3621			
		69	3617			
BLOCK 4	LOT	15	9400	VISTA RIDGE AVE	E/W	PUBLIC STREET
		16	9404			
		17	9408			
		18	9412			
		19	9416			
		20	9420			
		21	9424			
		22	9428			
		23	9432			
		24	9436			
		25	9440			
		26	9444			
		27	9448			

ORIGINAL DATE: 6/11/1997

**CITY OF LAS VEGAS
PLANNING & DEVELOPMENT DEPARTMENT**


JOHN B HERBERT, PLANNER I

SAPPHIRE POINTE

Recorded in Book 80 Page 6 of Plats

200 Scale Map Location: L-7-4

Fire Dept. District Map # 1915:48

MASTER SITE ADDRESS: 9402 W. GOWAN RD

BLOCK 1	LOT	1	3600	WILD WILLOW ST	N/S	PUBLIC STREET
		2	3604			
		3	3608			
		4	3612			
		5	3616			
		6	3620			
		7	3624			
		8	3628			
		9	3632			
		10	3636			
		11	3640			
		12	3644			
		13	3648			
		14	3652			
BLOCK 2	LOT	28	9449	VISTA RIDGE AVE	E/W	PUBLIC STREET
		29	9445			
		30	9441			
		31	9437			
BLOCK 2	LOT	32	3645	WALNUT WOOD ST	N/S	PUBLIC STREET
		33	3641			
		34	3637			
		35	3633			
		36	3629			
		37	3625			
		38	3621			
		39	3617			
BLOCK 2	LOT	40	9424	TETON WOOD AVE	E/W	PUBLIC STREET
		41	9428			
		42	9432			
		43	9436			
		44	9437			
		45	9433			
		46	9429			
		47	9425			
		48	9421			
		49	9417			
		50	9413			
		51	9409			
		52	9405			
		53	9401			
BLOCK 3	LOT	54	3616	WALNUT WOOD ST	N/S	PUBLIC STREET
		55	3620			
		56	3624			
		57	3628			
		58	3632			

SAPPHIRE POINTE

BLOCK 3	LOT	59	3636	WALNUT WOOD ST	N/S	PUBLIC STREET
		60	3640			
		61	3644			
BLOCK 3	LOT	62	3645	WILD WILLOW ST	N/S	PUBLIC STREET
		63	3641			
		64	3637			
		65	3633			
		66	3629			
		67	3625			
		68	3621			
		69	3617			
BLOCK 4	LOT	15	9400			
		16	9404			
		17	9408			
		18	9412			
		19	9416			
		20	9420			
		21	9424			
		22	9428			
		23	9432			
		24	9436			
		25	9440			
		26	9444			
		27	9448			

ORIGINAL DATE: 6/11/1997

**CITY OF LAS VEGAS
PLANNING & DEVELOPMENT DEPARTMENT**


JOHN B HERBERT, PLANNER I

SAPPHIRE POINTE

Recorded in Book 80 Page 6 of Plats

200 Scale Map Location: L-7-4

Fire Dept. District Map # 1915:48

MASTER SITE ADDRESS: 9402 W. GOWAN RD

BLOCK 1	LOT	1	3600	WILD WILLOW ST	N/S	PUBLIC STREET
		2	3604			
		3	3608			
		4	3612			
		5	3616			
		6	3620			
		7	3624			
		8	3628			
		9	3632			
		10	3636			
		11	3640			
		12	3644			
		13	3648			
		14	3652			
BLOCK 2	LOT	28	9449	VISTA RIDGE AVE	EW	PUBLIC STREET
		29	9445			
		30	9441			
		31	9437			
BLOCK 2	LOT	32	3645	WALNUT WOOD ST	N/S	PUBLIC STREET
		33	3641			
		34	3637			
		35	3633			
		36	3629			
		37	3625			
		38	3621			
		39	3617			
		BLOCK 2	LOT			
41	9428					
42	9432					
43	9436					
44	9437					
45	9433					
46	9429					
47	9425					
48	9421					
49	9417					
50	9413					
51	9409					
52	9405					
53	9401					
BLOCK 3	LOT	54	3616	WALNUT WOOD ST	N/S	PUBLIC STREET
		55	3620			
		56	3624			
		57	3628			
		58	3632			

SAPPHIRE POINTE

BLOCK 3	LOT	59	3636	WALNUT WOOD ST	N/S	PUBLIC STREET
		60	3640			
		61	3644			
BLOCK 3	LOT	62	3645	WILD WILLOW ST	N/S	PUBLIC STREET
		63	3641			
		64	3637			
		65	3633			
		66	3629			
		67	3625			
		68	3621			
		69	3617			
BLOCK 4	LOT	15	9400	VISTA RIDGE AVE	E/W	PUBLIC STREET
		16	9404			
		17	9408			
		18	9412			
		19	9416			
		20	9420			
		21	9424			
		22	9428			
		23	9432			
		24	9436			
		25	9440			
		26	9444			
		27	9448			

ORIGINAL DATE: 6/11/1997

**CITY OF LAS VEGAS
PLANNING & DEVELOPMENT DEPARTMENT**


JOHN B HERBERT, PLANNER I

970611

SAPPHIRE POINTE

BEING THE SOUTHWEST QUARTER (SW 1/4) OF THE SOUTHEAST QUARTER (SE 1/4) OF THE
NORTHEAST QUARTER (NE 1/4) OF SECTION 7, TOWNSHIP 20 SOUTH, RANGE 50 EAST, 12TH.
CITY OF LAS VEGAS, CLARK COUNTY, NEVADA

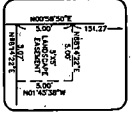
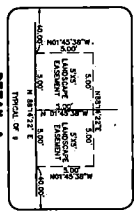
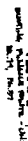
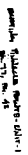
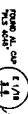
CLARK COUNTY

NOTES:

1. ALL REAL LOT CORNERS SHALL BE SET BY A SURVEYOR AND SHALL BE MARKED BY A SURVEYOR WITH A PERMANENT MARK.
2. EASEMENTS FOR UTILITY PURPOSES SHALL BE SHOWN BY THE SURVEYOR AND SHALL BE SUBJECT TO THE REQUIREMENTS OF THE APPLICABLE LAWS.
3. FOR CORNER CORNER, AND BOUNDARY LINE, THE SURVEYOR SHALL BE SET BY A SURVEYOR.
4. ALL EASEMENTS, ENCUMBRANCES, AND OTHER INTERESTS SHALL BE SHOWN BY THE SURVEYOR.

LEGEND:

- BOUNDARY LINE
- 1/8" LINE
- STREET CENTERLINE
- SET BACK, 5' MINIMUM
- SET BACK, 10' MINIMUM
- SET BACK, 15' MINIMUM
- LIST NUMBER - AS SHOWN
- ASSESSOR'S PARCEL NUMBER
- A.S.N.
- POINT OF BEGINNING
- COMING NUMBER
- CONV. NUMBER
- 123
- 124
- 125
- 126
- 127
- 128
- 129
- 130
- 131
- 132
- 133
- 134
- 135
- 136
- 137
- 138
- 139
- 140
- 141
- 142
- 143
- 144
- 145
- 146
- 147
- 148
- 149
- 150
- 151
- 152
- 153
- 154
- 155
- 156
- 157
- 158
- 159
- 160
- 161
- 162
- 163
- 164
- 165
- 166
- 167
- 168
- 169
- 170
- 171
- 172
- 173
- 174
- 175
- 176
- 177
- 178
- 179
- 180
- 181
- 182
- 183
- 184
- 185
- 186
- 187
- 188
- 189
- 190
- 191
- 192
- 193
- 194
- 195
- 196
- 197
- 198
- 199
- 200
- 201
- 202
- 203
- 204
- 205
- 206
- 207
- 208
- 209
- 210
- 211
- 212
- 213
- 214
- 215
- 216
- 217
- 218
- 219
- 220
- 221
- 222
- 223
- 224
- 225
- 226
- 227
- 228
- 229
- 230
- 231
- 232
- 233
- 234
- 235
- 236
- 237
- 238
- 239
- 240
- 241
- 242
- 243
- 244
- 245
- 246
- 247
- 248
- 249
- 250
- 251
- 252
- 253
- 254
- 255
- 256
- 257
- 258
- 259
- 260
- 261
- 262
- 263
- 264
- 265
- 266
- 267
- 268
- 269
- 270
- 271
- 272
- 273
- 274
- 275
- 276
- 277
- 278
- 279
- 280
- 281
- 282
- 283
- 284
- 285
- 286
- 287
- 288
- 289
- 290
- 291
- 292
- 293
- 294
- 295
- 296
- 297
- 298
- 299
- 300
- 301
- 302
- 303
- 304
- 305
- 306
- 307
- 308
- 309
- 310
- 311
- 312
- 313
- 314
- 315
- 316
- 317
- 318
- 319
- 320
- 321
- 322
- 323
- 324
- 325
- 326
- 327
- 328
- 329
- 330
- 331
- 332
- 333
- 334
- 335
- 336
- 337
- 338
- 339
- 340
- 341
- 342
- 343
- 344
- 345
- 346
- 347
- 348
- 349
- 350
- 351
- 352
- 353
- 354
- 355
- 356
- 357
- 358
- 359
- 360
- 361
- 362
- 363
- 364
- 365
- 366
- 367
- 368
- 369
- 370
- 371
- 372
- 373
- 374
- 375
- 376
- 377
- 378
- 379
- 380
- 381
- 382
- 383
- 384
- 385
- 386
- 387
- 388
- 389
- 390
- 391
- 392
- 393
- 394
- 395
- 396
- 397
- 398
- 399
- 400
- 401
- 402
- 403
- 404
- 405
- 406
- 407
- 408
- 409
- 410
- 411
- 412
- 413
- 414
- 415
- 416
- 417
- 418
- 419
- 420
- 421
- 422
- 423
- 424
- 425
- 426
- 427
- 428
- 429
- 430
- 431
- 432
- 433
- 434
- 435
- 436
- 437
- 438
- 439
- 440
- 441
- 442
- 443
- 444
- 445
- 446
- 447
- 448
- 449
- 450
- 451
- 452
- 453
- 454
- 455
- 456
- 457
- 458
- 459
- 460
- 461
- 462
- 463
- 464
- 465
- 466
- 467
- 468
- 469
- 470
- 471
- 472
- 473
- 474
- 475
- 476
- 477
- 478
- 479
- 480
- 481
- 482
- 483
- 484
- 485
- 486
- 487
- 488
- 489
- 490
- 491
- 492
- 493
- 494
- 495
- 496
- 497
- 498
- 499
- 500
- 501
- 502
- 503
- 504
- 505
- 506
- 507
- 508
- 509
- 510
- 511
- 512
- 513
- 514
- 515
- 516
- 517
- 518
- 519
- 520
- 521
- 522
- 523
- 524
- 525
- 526
- 527
- 528
- 529
- 530
- 531
- 532
- 533
- 534
- 535
- 536
- 537
- 538
- 539
- 540
- 541
- 542
- 543
- 544
- 545
- 546
- 547
- 548
- 549
- 550
- 551
- 552
- 553
- 554
- 555
- 556
- 557
- 558
- 559
- 560
- 561
- 562
- 563
- 564
- 565
- 566
- 567
- 568
- 569
- 570
- 571
- 572
- 573
- 574
- 575
- 576
- 577
- 578
- 579
- 580
- 581
- 582
- 583
- 584
- 585
- 586
- 587
- 588
- 589
- 590
- 591
- 592
- 593
- 594
- 595
- 596
- 597
- 598
- 599
- 600
- 601
- 602
- 603
- 604
- 605
- 606
- 607
- 608
- 609
- 610
- 611
- 612
- 613
- 614
- 615
- 616
- 617
- 618
- 619
- 620
- 621
- 622
- 623
- 624
- 625
- 626
- 627
- 628
- 629
- 630
- 631
- 632
- 633
- 634
- 635
- 636
- 637
- 638
- 639
- 640
- 641
- 642
- 643
- 644
- 645
- 646
- 647
- 648
- 649
- 650
- 651
- 652
- 653
- 654
- 655
- 656
- 657
- 658
- 659
- 660
- 661
- 662
- 663
- 664
- 665
- 666
- 667
- 668
- 669
- 670
- 671
- 672
- 673
- 674
- 675
- 676
- 677
- 678
- 679
- 680
- 681
- 682
- 683
- 684
- 685
- 686
- 687
- 688
- 689
- 690
- 691
- 692
- 693
- 694
- 695
- 696
- 697
- 698
- 699
- 700
- 701
- 702
- 703
- 704
- 705
- 706
- 707
- 708
- 709
- 710
- 711
- 712
- 713
- 714
- 715
- 716
- 717
- 718
- 719
- 720
- 721
- 722
- 723
- 724
- 725
- 726
- 727
- 728
- 729
- 730
- 731
- 732
- 733
- 734
- 735
- 736
- 737
- 738
- 739
- 740
- 741
- 742
- 743
- 744
- 745
- 746
- 747
- 748
- 749
- 750
- 751
- 752
- 753
- 754
- 755
- 756
- 757
- 758
- 759
- 760
- 761
- 762
- 763
- 764
- 765
- 766
- 767
- 768
- 769
- 770
- 771
- 772
- 773
- 774
- 775
- 776
- 777
- 778
- 779
- 780
- 781
- 782
- 783
- 784
- 785
- 786
- 787
- 788
- 789
- 790
- 791
- 792
- 793
- 794
- 795
- 796
- 797
- 798
- 799
- 800
- 801
- 802
- 803
- 804
- 805
- 806
- 807
- 808
- 809
- 810
- 811
- 812
- 813
- 814
- 815
- 816
- 817
- 818
- 819
- 820
- 821
- 822
- 823
- 824
- 825
- 826
- 827
- 828
- 829
- 830
- 831
- 832
- 833
- 834
- 835
- 836
- 837
- 838
- 839
- 840
- 841
- 842
- 843
- 844
- 845
- 846
- 847
- 848
- 849
- 850
- 851
- 852
- 853
- 854
- 855
- 856
- 857
- 858
- 859
- 860
- 861
- 862
- 863
- 864
- 865
- 866
- 867
- 868
- 869
- 870
- 871
- 872
- 873
- 874
- 875
- 876
- 877
- 878
- 879
- 880
- 881
- 882
- 883
- 884
- 885
- 886
- 887
- 888
- 889
- 890
- 891
- 892
- 893
- 894
- 895
- 896
- 897
- 898
- 899
- 900
- 901
- 902
- 903
- 904
- 905
- 906
- 907
- 908
- 909
- 910
- 911
- 912
- 913
- 914
- 915
- 916
- 917
- 918
- 919
- 920
- 921
- 922
- 923
- 924
- 925
- 926
- 927
- 928
- 929
- 930
- 931
- 932
- 933
- 934
- 935
- 936
- 937
- 938
- 939
- 940
- 941
- 942
- 943
- 944
- 945
- 946
- 947
- 948
- 949
- 950
- 951
- 952
- 953
- 954
- 955
- 956
- 957
- 958
- 959
- 960
- 961
- 962
- 963
- 964
- 965
- 966
- 967
- 968
- 969
- 970
- 971
- 972
- 973
- 974
- 975
- 976
- 977
- 978
- 979
- 980
- 981
- 982
- 983
- 984
- 985
- 986
- 987
- 988
- 989
- 990
- 991
- 992
- 993
- 994
- 995
- 996
- 997
- 998
- 999
- 1000



1	APN 138-07-801-016
2	APN 138-07-801-017
3	APN 138-07-801-018
4	APN 138-07-801-019
5	APN 138-07-801-020
6	APN 138-07-801-021
7	APN 138-07-801-022
8	APN 138-07-801-023
9	APN 138-07-801-024
10	APN 138-07-801-025
11	APN 138-07-801-026
12	APN 138-07-801-027
13	APN 138-07-801-028
14	APN 138-07-801-029
15	APN 138-07-801-030
16	APN 138-07-801-031
17	APN 138-07-801-032
18	APN 138-07-801-033
19	APN 138-07-801-034
20	APN 138-07-801-035
21	APN 138-07-801-036
22	APN 138-07-801-037
23	APN 138-07-801-038
24	APN 138-07-801-039
25	APN 138-07-801-040
26	APN 138-07-801-041
27	APN 138-07-801-042
28	APN 138-07-801-043
29	APN 138-07-801-044
30	APN 138-07-801-045
31	APN 138-07-801-046
32	APN 138-07-801-047
33	APN 138-07-801-048
34	APN 138-07-801-049
35	APN 138-07-801-050
36	APN 138-07-801-051
37	APN 138-07-801-052
38	APN 138-07-801-053
39	APN 138-07-801-054
40	APN 138-07-801-055
41	APN 138-07-801-056
42	APN 138-07-801-057
43	APN 138-07-801-058
44	APN 138-07-801-059
45	APN 138-07-801-060
46	APN 138-07-801-061
47	APN 138-07-801-062
48	APN 138-07-801-063
49	APN 138-07-801-064
50	APN 138-07-801-065
51	APN 138-07-801-066
52	APN 138-07-801-067
53	APN 138-07-801-068
54	APN 138-07-801-069
55	APN 138-07-801-070
56	APN 138-07-801-071
57	APN 138-07-801-072
58	APN 138-07-801-073
59	APN 138-07-801-074
60	APN 138-07-801-075
61	APN 138-07-801-076
62	APN 138-07-801-077
63	APN 138-07-801-078
64	APN 138-07-801-079
65	APN 138-07-801-080
66	APN 138-07-801-081
67	APN 138-07-801-082
68	APN 138-07-801-083
69	APN 138-07-801-084
70	APN 138-07-801-085
71	APN 138-07-801-086
72	APN 138-07-801-087
73	APN 138-07-801-088
74	APN 138-07-801-089
75	APN 138-07-801-090
76	APN 138-07-801-091
77	APN 138-07-801-092
78	APN 138-07-801-093
79	APN 138-07-801-094
80	APN 138-07-801-095
81	APN 138-07-801-096
82	APN 138-07-801-097
83	APN 138-07-801-098
84	APN 138-07-801-099
85	APN 138-07-801-100
86	APN 138-07-801-101
87	APN 138-07-801-102
88	APN