

AVENTINE/BARADA UNIT 1

Recorded in Book 111 Page 66 of Plats

200 Scale Map Location: G-18-4

Fire Dept. District Map # 1415:38

MASTER SITE ADDRESS: 9303 GILCREASE AVE

BLDG	1	UNIT	1001 1002 1003	9303	GILCREASE AVE	#1001 #1002 #1003	E/W	PUBLIC STREET
BLDG	2	UNIT	1004 1005 1006	9303	GILCREASE AVE	#1004 #1005 #1006	E/W	PUBLIC STREET
BLDG	3	UNIT	1007 1008 1009	9303	GILCREASE AVE	#1007 #1008 #1009	E/W	PUBLIC STREET
BLDG	4	UNIT	1010 1011 1012	9303	GILCREASE AVE	#1010 #1011 #1012	E/W	PUBLIC STREET
BLDG	74-1	UNIT	1239 1240 1241 1242	9303	GILCREASE AVE	#1239 #1240 #1241 #1242	E/W	PUBLIC STREET
BLDG	74-2	UNIT	2239 2240 2241 2242	9303	GILCREASE AVE	#2239 #2240 #2241 #2242	E/W	PUBLIC STREET
BLDG	75-1	UNIT	1243 1244 1245 1246	9303	GILCREASE AVE	#1243 #1244 #1245 #1246	E/W	PUBLIC STREET
BLDG	75-2	UNIT	2243 2244 2245 2246	9303	GILCREASE AVE	#2243 #2244 #2245 #2246	E/W	PUBLIC STREET

All vehicle drive lanes are PRIVATE.

ORIGINAL DATE: 7/24/2003

**CITY OF LAS VEGAS
PLANNING & DEVELOPMENT DEPARTMENT**

P D MURPHY, PLANNER I



AVENTINE/BARADA UNIT 1

Recorded in Book 111 Page 66 of Plats

200 Scale Map Location: G-18-4

Fire Dept. District Map # 1415:38

MASTER SITE ADDRESS: 9303 GILCREASE AVE

BLDG	1	UNIT	1001 1002 1003	9303	GILCREASE AVE	#1001 #1002 #1003	E/W	PUBLIC STREET
BLDG	2	UNIT	1004 1005 1006	9303	GILCREASE AVE	#1004 #1005 #1006	E/W	PUBLIC STREET
BLDG	3	UNIT	1007 1008 1009	9303	GILCREASE AVE	#1007 #1008 #1009	E/W	PUBLIC STREET
BLDG	4	UNIT	1010 1011 1012	9303	GILCREASE AVE	#1010 #1011 #1012	E/W	PUBLIC STREET
BLDG	74-1	UNIT	1239 1240 1241 1242	9303	GILCREASE AVE	#1239 #1240 #1241 #1242	E/W	PUBLIC STREET
BLDG	74-2	UNIT	2239 2240 2241 2242	9303	GILCREASE AVE	#2239 #2240 #2241 #2242	E/W	PUBLIC STREET
BLDG	75-1	UNIT	1243 1244 1245 1246	9303	GILCREASE AVE	#1243 #1244 #1245 #1246	E/W	PUBLIC STREET
BLDG	75-2	UNIT	2243 2244 2245 2246	9303	GILCREASE AVE	#2243 #2244 #2245 #2246	E/W	PUBLIC STREET

All vehicle drive lanes are PRIVATE.

ORIGINAL DATE: 7/24/2003

**CITY OF LAS VEGAS
PLANNING & DEVELOPMENT DEPARTMENT**

P D MURPHY, PLANNER I



AVENTINE/BARADA UNIT 2A

Recorded in Book 112 Page 91 of Plats

200 Scale Map Location: G-18-4

Fire Dept. District Map # 1415:38

MASTER SITE ADDRESS: 9303 GILCREASE AVE

BLDG	5	UNIT	1013 1014 1015	9303	GILCREASE AVE	#1013 #1014 #1015	E/W	PUBLIC STREET
BLDG	6	UNIT	1016 1017 1018	9303	GILCREASE AVE	#1016 #1017 #1018	E/W	PUBLIC STREET
BLDG	7	UNIT	1019 1020 1021	9303	GILCREASE AVE	#1019 #1020 #1021	E/W	PUBLIC STREET
BLDG	8	UNIT	1022 1023 1024	9303	GILCREASE AVE	#1022 #1023 #1024	E/W	PUBLIC STREET
BLDG	9	UNIT	1025 1026 1027	9303	GILCREASE AVE	#1025 #1026 #1027	E/W	PUBLIC STREET
BLDG	10	UNIT	1028 1029 1030	9303	GILCREASE AVE	#1028 #1029 #1030	E/W	PUBLIC STREET
BLDG	11	UNIT	1031 1032 1033	9303	GILCREASE AVE	#1031 #1032 #1033	E/W	PUBLIC STREET
BLDG	12	UNIT	1034 1035 1036	9303	GILCREASE AVE	#1034 #1035 #1036	E/W	PUBLIC STREET
BLDG	13	UNIT	1037 1038 1039	9303	GILCREASE AVE	#1037 #1038 #1039	E/W	PUBLIC STREET
BLDG	14	UNIT	1040 1041 1042	9303	GILCREASE AVE	#1040 #1041 #1042	E/W	PUBLIC STREET
BLDG	15	UNIT	1043 1044 1045	9303	GILCREASE AVE	#1043 #1044 #1045	E/W	PUBLIC STREET
BLDG	16	UNIT	1046 1047 1048	9303	GILCREASE AVE	#1046 #1047 #1048	E/W	PUBLIC STREET
BLDG	42	UNIT	1124	9303	GILCREASE AVE	#1124	E/W	PUBLIC STREET

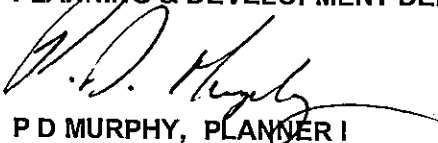
AVENTINE/BARADA UNIT 2A

BLDG	42	UNIT	1125 1126	9303	GILCREASE AVE	#1125 #1126	E/W	PUBLIC STREET
BLDG	44	UNIT	1130 1131 1132	9303	GILCREASE AVE	#1130 #1131 #1132	E/W	PUBLIC STREET
BLDG	45	UNIT	1133 1134 1135	9303	GILCREASE AVE	#1133 #1134 #1135	E/W	PUBLIC STREET
BLDG	46	UNIT	1136 1137 1138	9303	GILCREASE AVE	#1136 #1137 #1138	E/W	PUBLIC STREET
BLDG	47	UNIT	1139 1140 1141	9303	GILCREASE AVE	#1139 #1140 #1141	E/W	PUBLIC STREET
BLDG	48	UNIT	1142 1143 1144	9303	GILCREASE AVE	#1142 #1143 #1144	E/W	PUBLIC STREET
BLDG	49	UNIT	1145 1146 1147	9303	GILCREASE AVE	#1145 #1146 #1147	E/W	PUBLIC STREET
BLDG	50	UNIT	1148 1149 1150	9303	GILCREASE AVE	#1148 #1149 #1150	E/W	PUBLIC STREET
BLDG	51	UNIT	1151 1152 1153	9303	GILCREASE AVE	#1151 #1152 #1153	E/W	PUBLIC STREET
BLDG	52	UNIT	1154 1155 1156	9303	GILCREASE AVE	#1154 #1155 #1156	E/W	PUBLIC STREET
BLDG	53	UNIT	1157 1158 1159	9303	GILCREASE AVE	#1157 #1158 #1159	E/W	PUBLIC STREET
BLDG	54	UNIT	1160 1161 1162	9303	GILCREASE AVE	#1160 #1161 #1162	E/W	PUBLIC STREET

All vehicle drive lanes are PRIVATE.

ORIGINAL DATE: 9/29/2003

**CITY OF LAS VEGAS
PLANNING & DEVELOPMENT DEPARTMENT**


P D MURPHY, PLANNER I

RECORDED AT THE REQUEST OF:
TETRA TECH INC

Certificate of Amendment

07-29-2003 15:42 DOM

OFFICIAL RECORDS

BOOK/INSTR: 20030729-04044

PAGE COUNT:

FEE: 15.00
RPTT: 00

MAP TYPE PLBOOK/PAGE 111/0066

April 3, 2003

Rita M. Lumos, PLS
City Surveyor
City of Las Vegas, Nevada

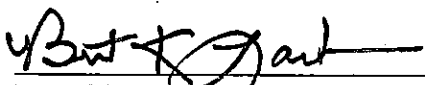
Document: Final Map of "Aventine/Barada Unit 1" (A Condominium Common Interest Community)
Recorded July 24, 2003 in Book 111 of Plats, at Page 66

Legal Description: A portion of the Southeast Quarter (SE 1/4) of the Northeast Quarter (NE 1/4) of Section 18, Township 19 South, Range 60 East, M.D.M., City of Las Vegas, Clark County, Nevada.

Caption: The purpose of this Certificate of Amendment is to correct a miscellaneous scrivener error as shown on said Plat, and is hereby amended as follows:

1. Amend the unit number on page 3, incorrectly shown as "1103" to read **1003**.

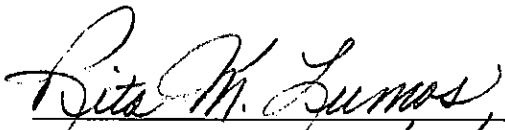
I, Brent K. Layton, a professional Land Surveyor, registered in the State of Nevada, as an agent for Tetra Tech, Inc., hereby certify that the above is correct and does not change the location of any monument, lot line, boundary line or property line.


Brent K. Layton, P.L.S.
Nevada Certificate No. 13864



(2)
SOS
KST

I hereby certify that I have examined this Certificate of Amendment and that the change to the original document specified herein is provided for in applicable sections of NRS 278.010 to 278.630, inclusive, 625.340 to 625.380, inclusive and local ordinances adopted pursuant thereto, and I am satisfied that this Certificate of Amendment so amends or corrects the document as to make it technically correct.


Rita M. Lumos, P.L.S. 7/29/03
Las Vegas City Surveyor
Nevada Certificate No. 5094

When recorded mail to:
Tetra Tech, Inc.
401 N. Buffalo Dr., Suite 100
Las Vegas, Nevada 89145

P:\P10034\0001\Survey\LEGALS\Certificate of Amendment.doc

CLARK COUNTY, NEVADA
FRANCES DEANE, RECORDER

RECORDED AT THE REQUEST OF:
TETRA TECH INC

07-29-2003 15:42 DOM

BOOK/INSTR: 20030729-04044
PLAT/CA PAGE COUNT: 2

FEE: 15.00
RETT: .00

MAP TYPE PLBOOK/PAGE 111/0066

RECEIPT/CONF. COPY - HAS NOT BEEN COMPARED TO THE ORIGINAL

FINAL MAP OF AVENTINE/BARADA UNIT 1

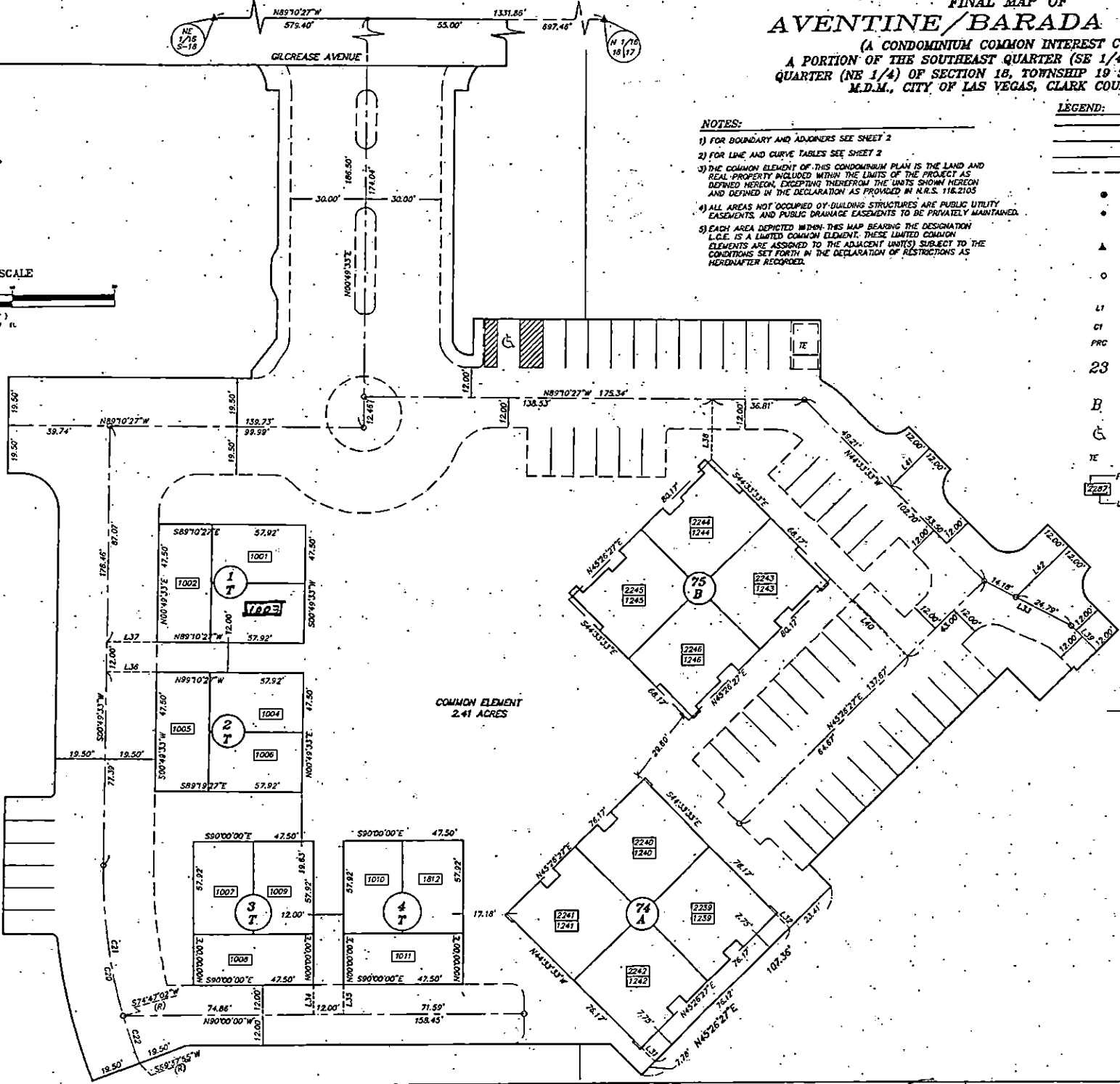
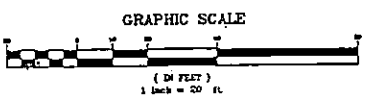
(A CONDOMINIUM COMMON INTEREST COMMUNITY)
A PORTION OF THE SOUTHEAST QUARTER (SE 1/4) OF THE NORTHEAST
QUARTER (NE 1/4) OF SECTION 18, TOWNSHIP 19 SOUTH, RANGE 60 EAST,
M.D.M., CITY OF LAS VEGAS, CLARK COUNTY, NEVADA

NOTES:

- 1) FOR BOUNDARY AND ADJOINERS SEE SHEET 2
- 2) FOR LINE AND CURVE TABLES SEE SHEET 2
- 3) THE COMMON ELEMENT OF THIS CONDOMINIUM PLAN IS THE LAND AND REAL PROPERTY INCLUDED WITHIN THE LIMITS OF THE PROJECT AS DEFINED HEREON, EXCEPTING THEREFROM THE UNITS SHOWN HEREON AND DEFINED IN THE DECLARATION AS PROVIDED IN N.R.S. 116.2105
- 4) ALL AREAS NOT OCCUPIED BY BUILDING STRUCTURES ARE PUBLIC UTILITY EASEMENTS, AND PUBLIC DRAINAGE EASEMENTS TO BE PRIVATELY MAINTAINED.
- 5) EACH AREA DENOTED WITHIN THIS MAP BEARING THE DESIGNATION L.C.E. IS A LIMITED COMMON ELEMENT, THESE LIMITED COMMON ELEMENTS ARE ASSIGNED TO THE ADJACENT UNIT(S) SUBJECT TO THE CONDITIONS SET FORTH IN THE DECLARATION OF RESTRICTIONS AS HERINAFTER RECORDED.

LEGEND:

- PROPERTY LINE
- RIGHT-OF-WAY LINE
- ABUTTING PARCEL LINE
- STREET CENTERLINE
- FOUND MONUMENT AS NOTED
- SET TYPE II MONUMENT PLS 12469 WITH REFERENCE MONUMENTS
- SET TYPE III MONUMENT PLS 12469 WITH REFERENCE MONUMENTS
- SET 5/8" REBAR & ALCAP PLS 12469
- LINE NUMBER (SEE PAGE 2 OF 7)
- CURVE NUMBER (SEE PAGE 2 OF 7)
- POINT OF REVERSE CURVE
- BUILDING NUMBER LIVING UNITS = 28 COMMON ELEMENT = 1
- BUILDING TYPE
- HANDICAP PARKING
- TRASH ENCLOSURE
- FLOOR DESIGNATOR
- UNIT DESIGNATORS



(File Copy) 111-66