

# AVENTINE/BARADA UNIT 2A

Recorded in Book 112 Page 91 of Plats

200 Scale Map Location: G-18-4

Fire Dept. District Map # 1415:38

MASTER SITE ADDRESS: 9303 GILCREASE AVE

BLDG	5	UNIT	1013 1014 1015	9303	GILCREASE AVE	#1013 #1014 #1015	E/W	PUBLIC STREET
BLDG	6	UNIT	1016 1017 1018	9303	GILCREASE AVE	#1016 #1017 #1018	E/W	PUBLIC STREET
BLDG	7	UNIT	1019 1020 1021	9303	GILCREASE AVE	#1019 #1020 #1021	E/W	PUBLIC STREET
BLDG	8	UNIT	1022 1023 1024	9303	GILCREASE AVE	#1022 #1023 #1024	E/W	PUBLIC STREET
BLDG	9	UNIT	1025 1026 1027	9303	GILCREASE AVE	#1025 #1026 #1027	E/W	PUBLIC STREET
BLDG	10	UNIT	1028 1029 1030	9303	GILCREASE AVE	#1028 #1029 #1030	E/W	PUBLIC STREET
BLDG	11	UNIT	1031 1032 1033	9303	GILCREASE AVE	#1031 #1032 #1033	E/W	PUBLIC STREET
BLDG	12	UNIT	1034 1035 1036	9303	GILCREASE AVE	#1034 #1035 #1036	E/W	PUBLIC STREET
BLDG	13	UNIT	1037 1038 1039	9303	GILCREASE AVE	#1037 #1038 #1039	E/W	PUBLIC STREET
BLDG	14	UNIT	1040 1041 1042	9303	GILCREASE AVE	#1040 #1041 #1042	E/W	PUBLIC STREET
BLDG	15	UNIT	1043 1044 1045	9303	GILCREASE AVE	#1043 #1044 #1045	E/W	PUBLIC STREET
BLDG	16	UNIT	1046 1047 1048	9303	GILCREASE AVE	#1046 #1047 #1048	E/W	PUBLIC STREET
BLDG	42	UNIT	1124	9303	GILCREASE AVE	#1124	E/W	PUBLIC STREET

## AVENTINE/BARADA UNIT 2A

BLDG	42	UNIT	1125 1126	9303	GILCREASE AVE	#1125 #1126	E/W	PUBLIC STREET
BLDG	44	UNIT	1130 1131 1132	9303	GILCREASE AVE	#1130 #1131 #1132	E/W	PUBLIC STREET
BLDG	45	UNIT	1133 1134 1135	9303	GILCREASE AVE	#1133 #1134 #1135	E/W	PUBLIC STREET
BLDG	46	UNIT	1136 1137 1138	9303	GILCREASE AVE	#1136 #1137 #1138	E/W	PUBLIC STREET
BLDG	47	UNIT	1139 1140 1141	9303	GILCREASE AVE	#1139 #1140 #1141	E/W	PUBLIC STREET
BLDG	48	UNIT	1142 1143 1144	9303	GILCREASE AVE	#1142 #1143 #1144	E/W	PUBLIC STREET
BLDG	49	UNIT	1145 1146 1147	9303	GILCREASE AVE	#1145 #1146 #1147	E/W	PUBLIC STREET
BLDG	50	UNIT	1148 1149 1150	9303	GILCREASE AVE	#1148 #1149 #1150	E/W	PUBLIC STREET
BLDG	51	UNIT	1151 1152 1153	9303	GILCREASE AVE	#1151 #1152 #1153	E/W	PUBLIC STREET
BLDG	52	UNIT	1154 1155 1156	9303	GILCREASE AVE	#1154 #1155 #1156	E/W	PUBLIC STREET
BLDG	53	UNIT	1157 1158 1159	9303	GILCREASE AVE	#1157 #1158 #1159	E/W	PUBLIC STREET
BLDG	54	UNIT	1160 1161 1162	9303	GILCREASE AVE	#1160 #1161 #1162	E/W	PUBLIC STREET

All vehicle drive lanes are PRIVATE.

ORIGINAL DATE: 9/29/2003

**CITY OF LAS VEGAS  
PLANNING & DEVELOPMENT DEPARTMENT**

  
**P D MURPHY, PLANNER I**

# AVENTINE/BARADA UNIT 2A

Recorded in Book 112 Page 91 of Plats

200 Scale Map Location: G-18-4

Fire Dept. District Map # 1415:38

MASTER SITE ADDRESS: 9303 GILCREASE AVE

BLDG	5	UNIT	1013 1014 1015	9303	GILCREASE AVE	#1013 #1014 #1015	E/W	PUBLIC STREET
BLDG	6	UNIT	1016 1017 1018	9303	GILCREASE AVE	#1016 #1017 #1018	E/W	PUBLIC STREET
BLDG	7	UNIT	1019 1020 1021	9303	GILCREASE AVE	#1019 #1020 #1021	E/W	PUBLIC STREET
BLDG	8	UNIT	1022 1023 1024	9303	GILCREASE AVE	#1022 #1023 #1024	E/W	PUBLIC STREET
BLDG	9	UNIT	1025 1026 1027	9303	GILCREASE AVE	#1025 #1026 #1027	E/W	PUBLIC STREET
BLDG	10	UNIT	1028 1029 1030	9303	GILCREASE AVE	#1028 #1029 #1030	E/W	PUBLIC STREET
BLDG	11	UNIT	1031 1032 1033	9303	GILCREASE AVE	#1031 #1032 #1033	E/W	PUBLIC STREET
BLDG	12	UNIT	1034 1035 1036	9303	GILCREASE AVE	#1034 #1035 #1036	E/W	PUBLIC STREET
BLDG	13	UNIT	1037 1038 1039	9303	GILCREASE AVE	#1037 #1038 #1039	E/W	PUBLIC STREET
BLDG	14	UNIT	1040 1041 1042	9303	GILCREASE AVE	#1040 #1041 #1042	E/W	PUBLIC STREET
BLDG	15	UNIT	1043 1044 1045	9303	GILCREASE AVE	#1043 #1044 #1045	E/W	PUBLIC STREET
BLDG	16	UNIT	1046 1047 1048	9303	GILCREASE AVE	#1046 #1047 #1048	E/W	PUBLIC STREET
BLDG	42	UNIT	1124	9303	GILCREASE AVE	#1124	E/W	PUBLIC STREET

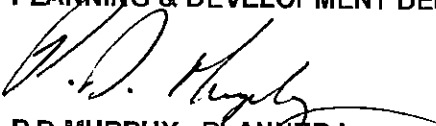
## AVENTINE/BARADA UNIT 2A

BLDG	42	UNIT	1125 1126	9303	GILCREASE AVE	#1125 #1126	E/W	PUBLIC STREET
BLDG	44	UNIT	1130 1131 1132	9303	GILCREASE AVE	#1130 #1131 #1132	E/W	PUBLIC STREET
BLDG	45	UNIT	1133 1134 1135	9303	GILCREASE AVE	#1133 #1134 #1135	E/W	PUBLIC STREET
BLDG	46	UNIT	1136 1137 1138	9303	GILCREASE AVE	#1136 #1137 #1138	E/W	PUBLIC STREET
BLDG	47	UNIT	1139 1140 1141	9303	GILCREASE AVE	#1139 #1140 #1141	E/W	PUBLIC STREET
BLDG	48	UNIT	1142 1143 1144	9303	GILCREASE AVE	#1142 #1143 #1144	E/W	PUBLIC STREET
BLDG	49	UNIT	1145 1146 1147	9303	GILCREASE AVE	#1145 #1146 #1147	E/W	PUBLIC STREET
BLDG	50	UNIT	1148 1149 1150	9303	GILCREASE AVE	#1148 #1149 #1150	E/W	PUBLIC STREET
BLDG	51	UNIT	1151 1152 1153	9303	GILCREASE AVE	#1151 #1152 #1153	E/W	PUBLIC STREET
BLDG	52	UNIT	1154 1155 1156	9303	GILCREASE AVE	#1154 #1155 #1156	E/W	PUBLIC STREET
BLDG	53	UNIT	1157 1158 1159	9303	GILCREASE AVE	#1157 #1158 #1159	E/W	PUBLIC STREET
BLDG	54	UNIT	1160 1161 1162	9303	GILCREASE AVE	#1160 #1161 #1162	E/W	PUBLIC STREET

All vehicle drive lanes are PRIVATE.

ORIGINAL DATE: 9/29/2003

CITY OF LAS VEGAS  
PLANNING & DEVELOPMENT DEPARTMENT

  
P D MURPHY, PLANNER I

# AVENTINE/BARADA UNIT 2A

Recorded in Book 112 Page 91 of Plats

200 Scale Map Location: G-18-4

Fire Dept. District Map # 1415:38

MASTER SITE ADDRESS: 9303 GILCREASE AVE

BLDG	5	UNIT	1013 1014 1015	9303	GILCREASE AVE	#1013 #1014 #1015	E/W	PUBLIC STREET
BLDG	6	UNIT	1016 1017 1018	9303	GILCREASE AVE	#1016 #1017 #1018	E/W	PUBLIC STREET
BLDG	7	UNIT	1019 1020 1021	9303	GILCREASE AVE	#1019 #1020 #1021	E/W	PUBLIC STREET
BLDG	8	UNIT	1022 1023 1024	9303	GILCREASE AVE	#1022 #1023 #1024	E/W	PUBLIC STREET
BLDG	9	UNIT	1025 1026 1027	9303	GILCREASE AVE	#1025 #1026 #1027	E/W	PUBLIC STREET
BLDG	10	UNIT	1028 1029 1030	9303	GILCREASE AVE	#1028 #1029 #1030	E/W	PUBLIC STREET
BLDG	11	UNIT	1031 1032 1033	9303	GILCREASE AVE	#1031 #1032 #1033	E/W	PUBLIC STREET
BLDG	12	UNIT	1034 1035 1036	9303	GILCREASE AVE	#1034 #1035 #1036	E/W	PUBLIC STREET
BLDG	13	UNIT	1037 1038 1039	9303	GILCREASE AVE	#1037 #1038 #1039	E/W	PUBLIC STREET
BLDG	14	UNIT	1040 1041 1042	9303	GILCREASE AVE	#1040 #1041 #1042	E/W	PUBLIC STREET
BLDG	15	UNIT	1043 1044 1045	9303	GILCREASE AVE	#1043 #1044 #1045	E/W	PUBLIC STREET
BLDG	16	UNIT	1046 1047 1048	9303	GILCREASE AVE	#1046 #1047 #1048	E/W	PUBLIC STREET
BLDG	42	UNIT	1124	9303	GILCREASE AVE	#1124	E/W	PUBLIC STREET

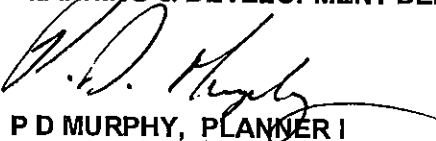
## AVENTINE/BARADA UNIT 2A

BLDG	42	UNIT	1125 1126	9303	GILCREASE AVE	#1125 #1126	E/W	PUBLIC STREET
BLDG	44	UNIT	1130 1131 1132	9303	GILCREASE AVE	#1130 #1131 #1132	E/W	PUBLIC STREET
BLDG	45	UNIT	1133 1134 1135	9303	GILCREASE AVE	#1133 #1134 #1135	E/W	PUBLIC STREET
BLDG	46	UNIT	1136 1137 1138	9303	GILCREASE AVE	#1136 #1137 #1138	E/W	PUBLIC STREET
BLDG	47	UNIT	1139 1140 1141	9303	GILCREASE AVE	#1139 #1140 #1141	E/W	PUBLIC STREET
BLDG	48	UNIT	1142 1143 1144	9303	GILCREASE AVE	#1142 #1143 #1144	E/W	PUBLIC STREET
BLDG	49	UNIT	1145 1146 1147	9303	GILCREASE AVE	#1145 #1146 #1147	E/W	PUBLIC STREET
BLDG	50	UNIT	1148 1149 1150	9303	GILCREASE AVE	#1148 #1149 #1150	E/W	PUBLIC STREET
BLDG	51	UNIT	1151 1152 1153	9303	GILCREASE AVE	#1151 #1152 #1153	E/W	PUBLIC STREET
BLDG	52	UNIT	1154 1155 1156	9303	GILCREASE AVE	#1154 #1155 #1156	E/W	PUBLIC STREET
BLDG	53	UNIT	1157 1158 1159	9303	GILCREASE AVE	#1157 #1158 #1159	E/W	PUBLIC STREET
BLDG	54	UNIT	1160 1161 1162	9303	GILCREASE AVE	#1160 #1161 #1162	E/W	PUBLIC STREET

All vehicle drive lanes are PRIVATE.

ORIGINAL DATE: 9/29/2003

**CITY OF LAS VEGAS  
PLANNING & DEVELOPMENT DEPARTMENT**

  
P D MURPHY, PLANNER I

File Copy

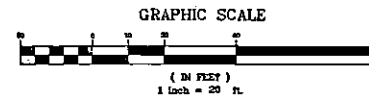
**FINAL MAP OF  
AVENTINE/BARADA UNIT 2A**  
(A CONDOMINIUM COMMON INTEREST COMMUNITY)  
A PORTION OF THE SOUTHEAST QUARTER (SE 1/4) OF THE NORTHEAST  
QUARTER (NE 1/4) OF SECTION 18, TOWNSHIP 19 SOUTH, RANGE 60 EAST,  
M.D.M., CITY OF LAS VEGAS, CLARK COUNTY, NEVADA

**NOTES:**

- 1) FOR BOUNDARY AND ADJOINERS SEE SHEET 2
- 2) THE COMMON ELEMENT OF THIS CONDOMINIUM PLAN IS THE LAND AND REAL PROPERTY INCLUDED WITHIN THE LIMITS OF THE PROJECT AS DEFINED HEREON, EXCEPTING THEREFROM THE UNITS SHOWN HEREON AND DEFINED IN THE DECLARATION AS PROVIDED IN N.R.S. 116.2105
- 3) ALL AREAS NOT OCCUPIED BY BUILDING STRUCTURES ARE PUBLIC UTILITY EASEMENTS, AND PUBLIC DRAINAGE EASEMENTS TO BE PRIVATELY MAINTAINED.
- 4) ALL INTERIOR PRIVATE STREETS ARE PUBLIC UTILITY EASEMENTS, PUBLIC DRAINAGE EASEMENTS AND PRIVATE SEWER EASEMENTS TO BE PRIVATELY MAINTAINED.
- 5) SEWERS SERVICING THE CONDOMINIUM UNITS ARE PRIVATE.

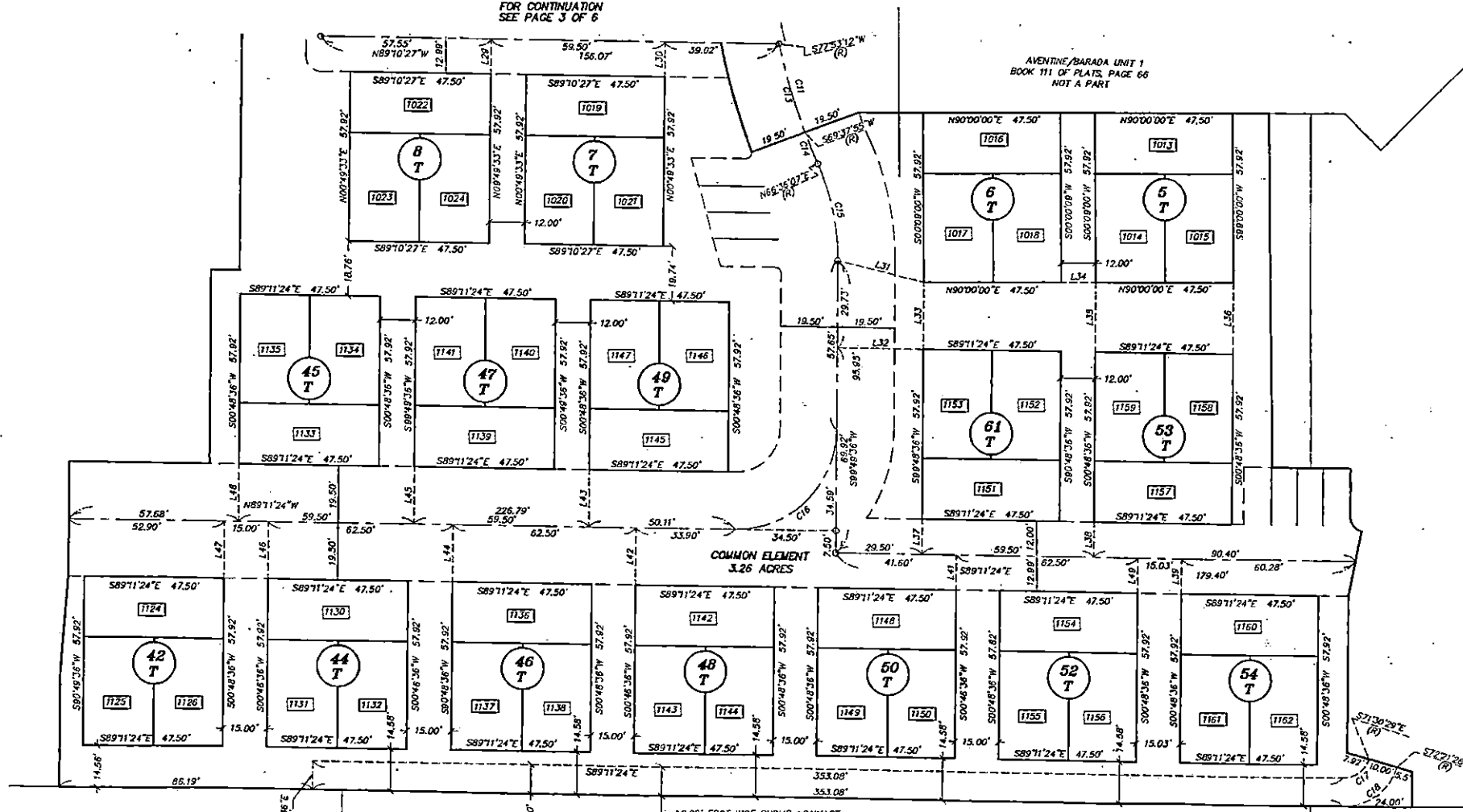
**LEGEND:**

- PROPERTY LINE
- RIGHT-OF-WAY LINE
- ABUTTING PARCEL LINE
- STREET CENTERLINE
- - - - - EASEMENT LINE
- FOUND 5/8" REBAR & ALCAP  
"PLS 12469" OR  
FOUND MONUMENT AS NOTED
- SET 5/8" REBAR & ALCAP  
"PLS 12469"
- L1 LINE NUMBER (SEE PAGE 3 OF 6)
- 01 CURVE NUMBER (SEE PAGE 3 OF 6)
- PRC POINT OF REVERSE CURVE
- 5 BUILDING NUMBER  
LIVING UNITS = 72  
COMMON LOTS = 1
- T BUILDING TYPE
- FLOOR DESIGNATOR
- UNIT DESIGNATORS



FOR CONTINUATION  
SEE PAGE 3 OF 6

AVENTINE/BARADA UNIT 1  
BOOK 111 OF PLATS, PAGE 66  
NOT A PART



File Copy

# FINAL MAP OF AVENTINE/BARADA UNIT 2A

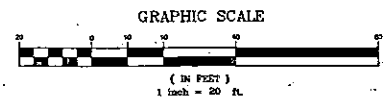
(A CONDOMINIUM COMMON INTEREST COMMUNITY)  
A PORTION OF THE SOUTHEAST QUARTER (SE 1/4) OF THE NORTHEAST  
QUARTER (NE 1/4) OF SECTION 18, TOWNSHIP 19 SOUTH, RANGE 60 EAST,  
M.D.M., CITY OF LAS VEGAS, CLARK COUNTY, NEVADA

**NOTES:**

- 1) FOR BOUNDARY AND ADJOINERS SEE SHEET 2
- 2) THE COMMON ELEMENT OF THIS CONDOMINIUM PLAN IS THE LAND AND REAL PROPERTY INCLUDED WITHIN THE LIMITS OF THE PROJECT AS DEFINED HEREON, EXCEPTING THEREFROM THE UNITS SHOWN HEREON AND DEFINED IN THE DECLARATION AS PROVIDED IN N.R.S. 116.2105
- 3) ALL AREAS NOT OCCUPIED BY BUILDING STRUCTURES ARE PUBLIC UTILITY EASEMENTS, AND PUBLIC DRAINAGE EASEMENTS TO BE PRIVATELY MAINTAINED.
- 4) ALL INTERIOR PRIVATE STREETS ARE PUBLIC UTILITY EASEMENTS, PUBLIC DRAINAGE EASEMENTS AND PRIVATE SEWER EASEMENTS TO BE PRIVATELY MAINTAINED.
- 5) SEWERS SERVICING THE CONDOMINIUM UNITS ARE PRIVATE.

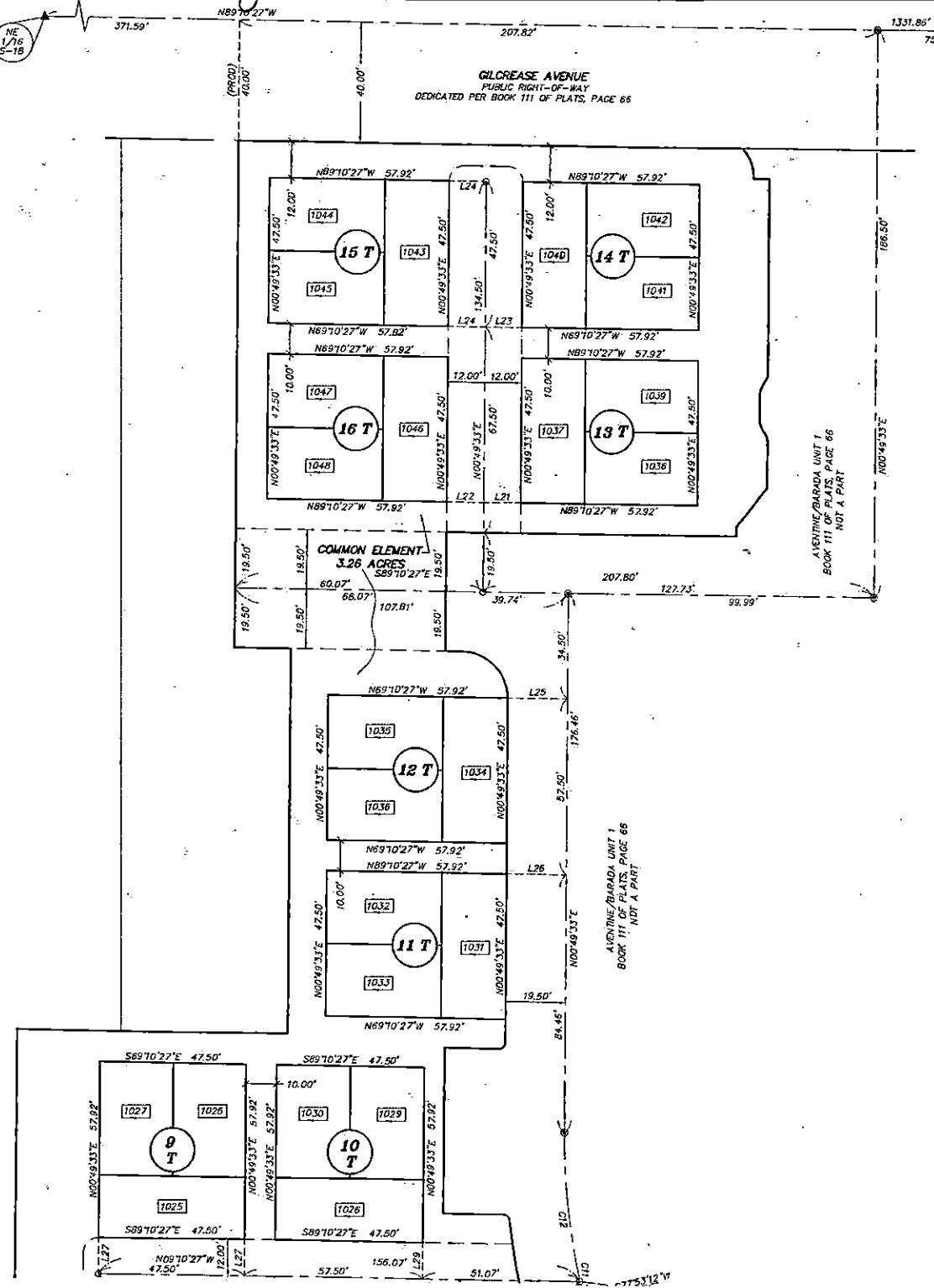
**LEGEND:**

- PROPERTY LINE
- RIGHT-OF-WAY LINE
- ABUTTING PARCEL LINE
- STREET CENTERLINE
- FOUND 5/8" REBAR & ALCAP  
PLS 12469" OR  
FOUND MONUMENT AS NOTED
- SET 5/8" REBAR & ALCAP  
PLS 12469"
- L1 LINE NUMBER
- C1 CURVE NUMBER
- PRC POINT OF REVERSE CURVE
- 5 BUILDING NUMBER  
LIVING UNITS = 72  
COMMON LOTS = 1
- T BUILDING TYPE
- 1014 FLOOR DESIGNATOR
- UNIT DESIGNATORS
- ▲ TYPE B MONUMENT PLS 12469  
WITH REFERENCE MONUMENTS  
SET PER BOOK 111, PAGE 66



LINE	BEARING	LENGTH
L1(R)	S89°10'27"E	5.00'
L2	S00°48'33"W	63.21'
L3	S00°48'33"W	8.00'
L4	S00°48'33"W	15.12'
L5	S38°07'19"W	16.34'
L6	S00°48'33"W	3.00'
L7	S89°10'27"E	5.24'
L8	N89°10'27"W	17.50'
L9	S89°10'27"E	19.33'
L10	S89°43'19"E	12.67'
L11	S89°11'24"E	27.25'
L12	S00°48'36"W	16.38'
L13	S12°08'28"W	22.72'
L14	S00°48'33"W	53.66'
L15	S73°10'08"E	23.42'
L16	S00°48'36"W	12.37'
L17	N89°09'42"E	32.61'
L18	N00°48'18"E	39.00'
L19	S89°11'15"E	9.67'
L20	N89°10'27"W	18.26'
L21	N89°10'27"W	12.00'
L22	S89°10'27"E	12.00'
L23	N89°10'27"W	12.00'
L24	S89°10'27"E	12.00'
L25	S89°10'27"E	19.50'
L26	S00°48'33"W	12.00'
L27	N00°48'33"E	12.00'
L28	S00°48'33"W	12.00'
L29	S00°48'33"W	12.00'
L30	N00°48'33"E	12.00'
L31	S76°10'17"E	30.36'
L32	N89°11'24"W	29.50'
L33	S01°01'05"W	22.89'
L34	S90°00'00"E	12.00'
L35	S00°59'48"W	23.73'
L36	S00°58'48"W	24.40'
L37	S00°48'36"W	12.00'
L38	S00°48'36"W	12.00'
L39	N00°48'36"E	12.00'
L40	N00°48'36"E	12.00'
L41	N00°48'36"E	12.00'
L42	N00°48'36"E	19.50'
L43	N00°48'36"E	19.50'
L44	N00°48'36"E	19.50'
L45	N00°48'36"E	19.50'

CURVE	DELTA	RADIUS	LENGTH	TANGENT
C1	41°48'37"	15.00'	10.85'	5.73'
C2	37°39'31"	5.00'	3.29'	1.70'
C3	37°39'31"	7.00'	4.60'	2.39'
C4	37°39'31"	7.00'	4.60'	2.39'
C5	37°39'31"	5.00'	3.29'	1.70'
C6	90°00'00"	15.00'	23.56'	15.00'
C7	90°00'00"	2.00'	3.14'	2.00'
C8	82°55'59"	2.00'	2.89'	1.72'
C9	141°07'37"	219.00'	58.93'	29.61'
C10	28°02'35"	5.00'	6.81'	4.05'
C11	241°32'6"	219.50'	92.80'	47.10'
C12	12°56'22"	219.50'	49.57'	24.69'
C13	87°51'7"	219.50'	31.82'	15.84'
C14	301°40'	219.50'	11.61'	5.81'
C15	241°2'29"	60.50'	34.01'	17.26'
C16	90°00'00"	34.50'	54.19'	34.50'
C17	72°19'05"	9.58'	12.05'	6.98'
C18	73°10'04"	19.55'	24.92'	14.51'



NE 1/16 5-18

N 1/16 18(17)

AVENTINE/BARADA UNIT 1  
BOOK 111 OF PLATS, PAGE 66  
NOT A PART

AVENTINE/BARADA UNIT 1  
BOOK 111 OF PLATS, PAGE 66  
NOT A PART