

# PINE MEADOWS 1 UNIT 10A

Recorded in Book 85 Page 19 of Plats

200 Scale Map Location: G-17-1

Fire Dept. District Map # 1416:14

MASTER SITE ADDRESS: 8811 GRAND TETON DR

BLOCK 8	LOT	321	7936	NESTING PINES PL	N/S	PUBLIC STREET
BLOCK 8	LOT	322	8800	COLORFUL PINES AVE	E/W	PUBLIC STREET
		323	8804			
		324	8808			
		325	8812			
Common Area	A	8807		GRAND TETON DR	E/W	PUBLIC STREET
	B	8803				
Common Area	C	7931		EL CAPITAN WAY	N/S	PUBLIC STREET

ORIGINAL DATE: 6/30/1998

**CITY OF LAS VEGAS  
PLANNING & DEVELOPMENT DEPARTMENT**

  
JOHN B HERBERT, PLANNER I

# PINE MEADOWS 1 UNIT 10A

Recorded in Book 85 Page 19 of Plats

200 Scale Map Location: G-17-1

Fire Dept. District Map # 1416:14

MASTER SITE ADDRESS: 8811 GRAND TETON DR

BLOCK 8	LOT	321	7936	NESTING PINES PL	N/S	PUBLIC STREET
BLOCK 8	LOT	322	8800	COLORFUL PINES AVE	E/W	PUBLIC STREET
		323	8804			
		324	8808			
		325	8812			
Common Area	A	8807		GRAND TETON DR	E/W	PUBLIC STREET
	B	8803				
Common Area	C	7931		EL CAPITAN WAY	N/S	PUBLIC STREET

ORIGINAL DATE: 6/30/1998

CITY OF LAS VEGAS  
PLANNING & DEVELOPMENT DEPARTMENT



JOHN B HERBERT, PLANNER I

# PINE MEADOWS 1 UNIT 10A

Recorded in Book 85 Page 19 of Plats

200 Scale Map Location: G-17-1

Fire Dept. District Map # 1416:14

MASTER SITE ADDRESS: 8811 GRAND TETON DR

BLOCK 8	LOT	321	7936	NESTING PINES PL	N/S	PUBLIC STREET
BLOCK 8	LOT	322	8800	COLORFUL PINES AVE	E/W	PUBLIC STREET
		323	8804			
		324	8808			
		325	8812			
Common Area	A	8807		GRAND TETON DR	E/W	PUBLIC STREET
	B	8803				
Common Area	C	7931		EL CAPITAN WAY	N/S	PUBLIC STREET

ORIGINAL DATE: 6/30/1998

**CITY OF LAS VEGAS  
PLANNING & DEVELOPMENT DEPARTMENT**

  
**JOHN B HERBERT, PLANNER I**

0180630

04104

# FINAL MAP of PINE MEADOWS 1 - UNIT 10A

A COMMON INTEREST COMMUNITY  
A PORTION OF THE NORTH HALF (N 1/2) OF SECTION 17,  
TOWNSHIP 19 SOUTH, RANGE 60 EAST, M.D.M.  
CITY OF LAS VEGAS, CLARK COUNTY, NEVADA.

TOTAL AREA: 24,825 s.f. (0.570 acres)  
TOTAL LOTS: 5

### LINE TABLE

LINE	DIRECTION	DISTANCE
L1	S89°33'28"E	10.00'
L2	N00°04'30"E	5.00'
L3	S89°33'28"E	3.00'

### CURVE TABLE

CURVE	RADIUS	LENGTH	TANGENT	DELTA
C1	61.00'	29.00'	14.78'	27°14'20"
C2	61.00'	27.82'	14.18'	26°17'50"
C3	61.00'	35.48'	18.81'	34°16'00"
C4	25.00'	9.19'	2.80'	11°53'53"
C5	25.00'	6.99'	3.52'	16°10'47"

### MAP LEGEND

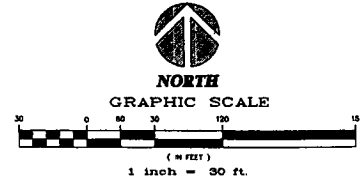
- ⊙ FOUND POINT, AS NOTED
- SET 5/8" REBAR AND ALUMINUM CAP, MARKED "PLS 11175", WITH REFERENCE TIES
- 17 LOT NUMBER
- Ⓟ BLOCK NUMBER
- (C) CALCULATED
- (R) RADIAL
- S.F. SQUARE FEET
- C2 CURVE NUMBER IDENTIFICATION, TYPICAL
- L3 LINE LABEL IDENTIFICATION, TYPICAL
- △ PUBLIC EASEMENT GRANTED TO THE CITY OF LAS VEGAS PER THIS FINAL MAP, FOR ROADWAY, DRAINAGE, FIRE, HYDRANT, TRAFFIC SIGNAL, STREETLIGHTING, WALKWAY AND SEWER PURPOSES, FOR POSSIBLE FUTURE PUBLIC NEEDS AS REQUIRED BY THE DEPARTMENT OF PUBLIC WORKS. THIS EASEMENT SHALL BE PRIVATELY MAINTAINED BY THE HOMEOWNERS' ASSOCIATION.
- STREET CENTERLINE, TYPICAL
- LOT LINE, TYPICAL
- ADJOINING SUBDIVISION LINE, TYPICAL
- EASEMENT LINE, TYPICAL
- TRACT BOUNDARY, TYPICAL

### NOTES:

- ALL COMMON ELEMENTS SHOWN HEREOF SHALL BE MAINTAINED BY THE HOMEOWNERS' ASSOCIATION.
- ALL REAR LOT CORNERS SHALL BE SET WITH A NAIL AND TAG ON THE BLOCK WALL MARKED "PLS 11175", AND ALL FRONT OR SIDE LOT CORNERS ADJOINING PUBLIC RIGHT-OF-WAY SHALL BE MARKED BY THE SAWCUTTING OF THE BACK OF CURB AT THE PROLONGATION OF EACH LOT LINE.
- DIRECT VEHICULAR ACCESS TO EL CAPITAN WAY AND GRAND TETON DRIVE THROUGH ANY COMMON ELEMENTS FROM ABUTTING LOTS SHALL BE PROHIBITED.
- DIRECT VEHICULAR ACCESS TO EL CAPITAN WAY AND GRAND TETON DRIVE FROM LOTS 321-325 OF BLOCK 8 SHALL BE PROHIBITED.

### MAP REFERENCE LIST

- THE OFFICIAL BLM PLAT OF SECTION 17
- THE SUPPLEMENTAL PLAT OF SECTION 17
- RECORD OF SURVEY - FILE 73, PAGE 14
- RECORD OF SURVEY - FILE 55, PAGE 04
- FINAL MAP - BOOK 60, PAGE 72
- H.D.Q.T. RIGHT-OF-WAY PLANS PARCEL No. PREFIX: U-095-C-
- FINAL MAP - BOOK 61, PAGE 93
- FINAL MAP - BOOK 61, PAGE 99
- FINAL MAP - BOOK 61, PAGE 85

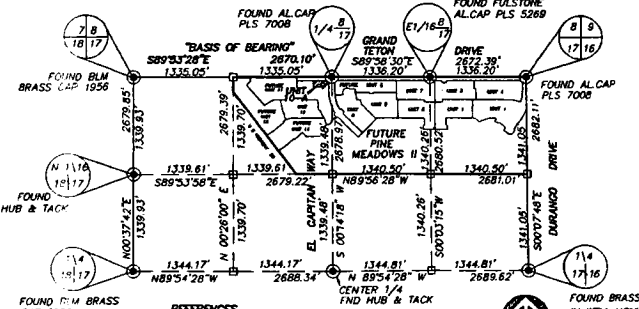
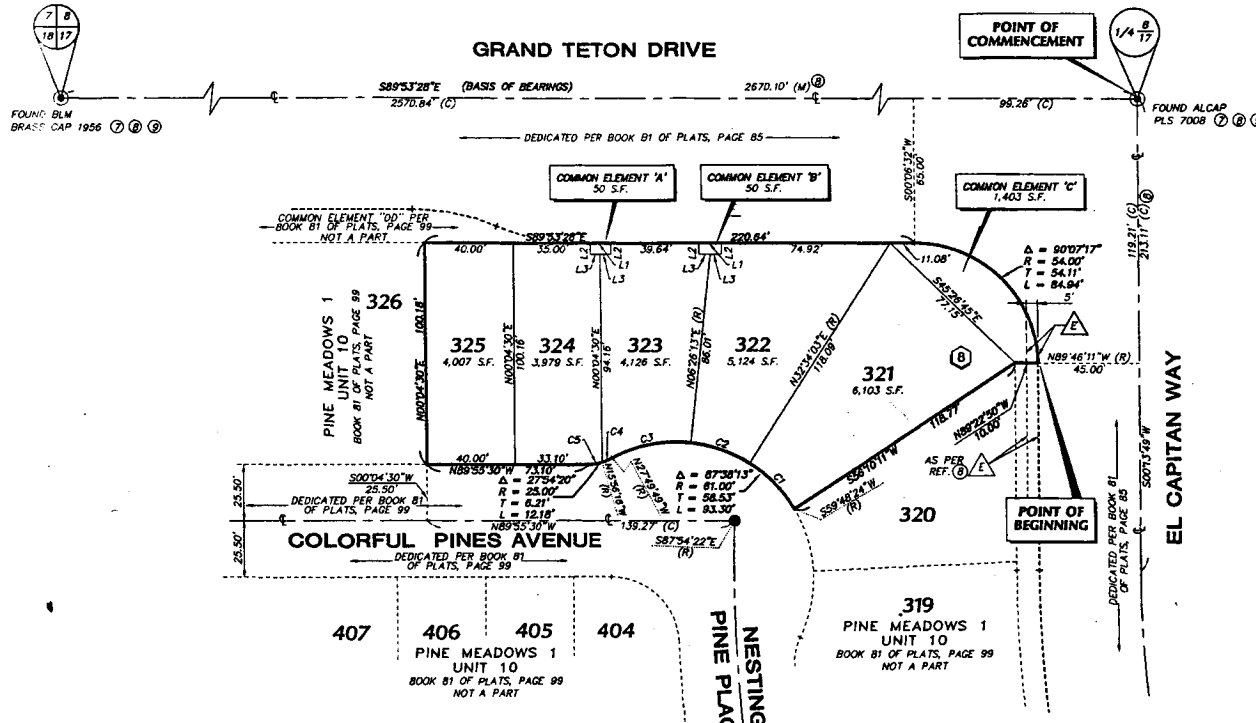


FM-17-98

FINAL MAP of  
**PINE MEADOWS 1 - UNIT 10A**  
A COMMON INTEREST COMMUNITY  
A PORTION OF THE NORTH HALF (N 1/2) OF SECTION 17,  
TOWNSHIP 19 SOUTH, RANGE 60 EAST, M.D.M.  
CITY OF LAS VEGAS, CLARK COUNTY, NEVADA.

**CML**  
CONSULTANTS, INC.  
4075 Cornerway Blvd. A  
Las Vegas, NV 89103  
Tel: (702) 398-0008  
Fax: (702) 398-0047

Date: 1-20-98  
Drawn by: F. Zwolinski  
Checked by: C. Cano  
Job Number: 97-9029-01  
SHEET: 2 OF 2



REFERENCES  
⊙ FOUND POINT AS NOTED  
□ CALCULATED POSITION

**SURVEY ANALYSIS**  
N 1/2 SECTION 17, T. 19 S., R. 60 E., M.D.M.  
Not to scale

- PLAT COPY -

TBook 85 Page