

APPALOOSA CANYON UNIT 2A

Recorded in Book 91 Page 51 of Plats

200 Scale Map Location: G-16-3

Fire Dept. District Map # 1417:42, 52

MASTER SITE ADDRESS: 8202 FARM RD

BLDG	2	UNIT	116	8149	PEMBA AVE	E/W	PRIVATE STREET
			117	8153			
BLDG	2	UNIT	118	7628	WINDSWEPT ST	N/S	PRIVATE STREET
			119	7624			
			120	7620			
			121	7616			
			122	7612			
			123	7608			
			124	7604			
			125	7600			
BLDG	2	UNIT	126	8201			
			127	8205			
			128	8209			
			129	8213			
			130	8217			
			131	8221			
			132	8225			
			133	8229			
			134	8233			
BLDG	4	UNIT	196	8200	IMPATIENTS AVE	E/W	PRIVATE STREET
			197	8204			
			198	8208			
			199	8212			
			200	8216			
			201	8220			
			202	8224			
			203	8228			
BLDG	6	UNIT	226	7616	ROOP ST	N/S	PRIVATE STREET
			227	7612			
			228	7608			
			229	7604			
BLDG	6	UNIT	230	8224	VALLEY STREAM AVE	E/W	PRIVATE STREET
			231	8220			
			232	8216			
			233	8212			
			234	8208			
			235	8200			
BLDG	6	UNIT	236	8201	IMPATIENTS AVE	E/W	PRIVATE STREET
			237	8205			
			238	8209			
			239	8213			
			240	8217			
			241	8221			

ORIGINAL DATE: 9/27/1999

CITY OF LAS VEGAS
PLANNING & DEVELOPMENT DEPARTMENT



HILLEVIS DAVIS, PLANNER I

10/12/99 Page 1

APPALOOSA CANYON UNIT 2A

Recorded in Book 91 Page 51 of Plats

200 Scale Map Location: G-16-3

Fire Dept. District Map # 1417:42, 52

MASTER SITE ADDRESS: 8202 FARM RD

BLDG	2	UNIT	116	8149	PEMBA AVE	E/W	PRIVATE STREET
			117	8153			
BLDG	2	UNIT	118	7628	WINDSWEPT ST	N/S	PRIVATE STREET
			119	7624			
			120	7620			
			121	7616			
			122	7612			
			123	7608			
			124	7604			
			125	7600			
BLDG	2	UNIT	126	8201	VALLEY STREAM AVE	E/W	PRIVATE STREET
			127	8205			
			128	8209			
			129	8213			
			130	8217			
			131	8221			
			132	8225			
			133	8229			
			134	8233			
BLDG	4	UNIT	196	8200	IMPATIENTS AVE	E/W	PRIVATE STREET
			197	8204			
			198	8208			
			199	8212			
			200	8216			
			201	8220			
			202	8224			
			203	8228			
BLDG	6	UNIT	226	7616	ROOP ST	N/S	PRIVATE STREET
			227	7612			
			228	7608			
			229	7604			
BLDG	6	UNIT	230	8224	VALLEY STREAM AVE	E/W	PRIVATE STREET
			231	8220			
			232	8216			
			233	8212			
			234	8208			
			235	8200			
BLDG	6	UNIT	236	8201	IMPATIENTS AVE	E/W	PRIVATE STREET
			237	8205			
			238	8209			
			239	8213			
			240	8217			
			241	8221			

ORIGINAL DATE: 9/27/1999

CITY OF LAS VEGAS
PLANNING & DEVELOPMENT DEPARTMENT



HILLEVI S DAVIS, PLANNER I

10/12/99 Page 1

APPALOOSA CANYON UNIT 2A

Recorded in Book 91 Page 51 of Plats

200 Scale Map Location: G-16-3

Fire Dept. District Map # 1417:42, 52

MASTER SITE ADDRESS: 8202 FARM RD

BLDG	2	UNIT	116 8149 117 8153	PEMBA AVE	E/W	PRIVATE STREET
BLDG	2	UNIT	118 7628 119 7624 120 7620 121 7616 122 7612 123 7608 124 7604 125 7600	WINDSWEPT ST	N/S	PRIVATE STREET
BLDG	2	UNIT	126 8201 127 8205 128 8209 129 8213 130 8217 131 8221 132 8225 133 8229 134 8233	VALLEY STREAM AVE	E/W	PRIVATE STREET
BLDG	4	UNIT	196 8200 197 8204 198 8208 199 8212 200 8216 201 8220 202 8224 203 8228	IMPATIENTS AVE	E/W	PRIVATE STREET
BLDG	6	UNIT	226 7616 227 7612 228 7608 229 7604	ROOP ST	N/S	PRIVATE STREET
BLDG	6	UNIT	230 8224 231 8220 232 8216 233 8212 234 8208 235 8200	VALLEY STREAM AVE	E/W	PRIVATE STREET
BLDG	6	UNIT	236 8201 237 8205 238 8209 239 8213 240 8217 241 8221	IMPATIENTS AVE	E/W	PRIVATE STREET

ORIGINAL DATE: 9/27/1999

CITY OF LAS VEGAS
PLANNING & DEVELOPMENT DEPARTMENT



HILLEVI S DAVIS, PLANNER I

10/12/99 Page 1

APPALOOSA CANYON UNIT 2A

Recorded in Book 91 Page 51 of Plats

200 Scale Map Location: G-16-3

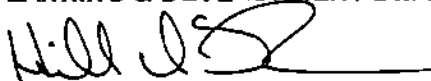
Fire Dept. District Map # 1417:42, 52

MASTER SITE ADDRESS: 8202 FARM RD

BLDG	2	UNIT	116	8149	PEMBA AVE	E/W	PRIVATE STREET
			117	8153			
BLDG	2	UNIT	118	7628	WINDSWEPT ST	N/S	PRIVATE STREET
			119	7624			
			120	7620			
			121	7616			
			122	7612			
			123	7608			
			124	7604			
			125	7600			
BLDG	2	UNIT	126	8201			
			127	8205			
			128	8209			
			129	8213			
			130	8217			
			131	8221			
			132	8225			
			133	8229			
			134	8233			
BLDG	4	UNIT	196	8200	IMPATIENTS AVE	E/W	PRIVATE STREET
			197	8204			
			198	8208			
			199	8212			
			200	8216			
			201	8220			
			202	8224			
			203	8228			
BLDG	6	UNIT	226	7616			
			227	7612			
			228	7608			
			229	7604			
BLDG	6	UNIT	230	8224	VALLEY STREAM AVE	E/W	PRIVATE STREET
			231	8220			
			232	8216			
			233	8212			
			234	8208			
			235	8200			
BLDG	6	UNIT	236	8201	IMPATIENTS AVE	E/W	PRIVATE STREET
			237	8205			
			238	8209			
			239	8213			
			240	8217			
			241	8221			

ORIGINAL DATE: 9/27/1999

CITY OF LAS VEGAS
PLANNING & DEVELOPMENT DEPARTMENT



HILLEVIS DAVIS, PLANNER I

10/12/99 Page 1

990927

W594

FINAL MAP OF APPALOOSA CANYON - UNIT 2A

A COMMON INTEREST COMMUNITY
A PORTION OF THE NORTHWEST QUARTER OF SECTION 16,
TOWNSHIP 19 SOUTH, RANGE 60 EAST, M.D.M.,
CITY OF LAS VEGAS, CLARK COUNTY, NEVADA

NOTES

- ADREAGE: 5.00 ACRES ±
- TOTAL LOTS: 43 RESIDENTIAL
1 COMMON ELEMENT
- REFERENCES:
RDS - FILE 93, PAGE 13
FM - BOOK 80, PAGE 28
FM - BOOK 80, PAGE 13
FM - BOOK ___ PAGE ___

CURVE TABLE

No.	ADIUS	DELTA	LENGTH	TANGENT
C1	56.00	15.74 10'	15.56	7.72
C2	58.00	17.03 21'	17.51	8.44
C3	58.00	20.58 44'	20.35	10.53
C4	58.00	31.25 29'	31.81	16.32
C5	58.00	27.04 21'	26.39	13.43
C6	574.00	04.09 40'	41.69	20.65
C7	574.00	01.28 48'	14.43	7.41
C8	350.00	01.21 48'	14.51	7.18
C9	350.00	07.14 11'	69.44	34.78
C10	350.00	09.47 59'	63.67	41.92
C11	11.50	94.08 40'	27.12	17.24
C12	574.00	02.40 52'	28.00	13.43
C13	16.50	80.00 00'	28.92	16.50
C14	50.00	24.31 92'	21.69	11.92
C15	30.00	90.00 00'	47.12	30.00
C16	58.00	132.42 94'	141.42	158.07
C17	528.00	01.24 43'	13.59	6.92

LINE TABLE

No.	BEARING	DISTANCE
L1	S85°14'45"E	12.00
L2	N04°40'45"E	24.00
L3	S86°43'52"E	48.00
L4	N04°45'53"E	30.62
L5	N42°40'50"E	12.83
L6	N87°18'14"E	49.60
L7	N11°31'21"E	41.42
L8	N49°45'48"E	9.81
L9	N89°03'57"E	48.57
L10	N03°25'45"W	30.05
L11	N79°31'38"W	48.57
L12	S40°14'18"W	10.49
L13	N11°31'21"E	30.89
L14	N49°46'48"E	27.43
L15	N89°04'07"E	37.41
L16	N00°56'53"W	48.57
L17	N49°14'14"W	9.51
L18	N74°46'43"W	41.42
L19	N86°37'57"E	38.00
L20	S49°45'46"E	10.49
L21	S16°23'22"E	48.57
L22	S04°45'45"W	3.36
L23	S85°14'45"E	14.37
L24	S04°45'45"W	6.90
L25	S85°14'45"E	11.20
L26	N04°45'40"E	46.00
L27	N43°16'16"W	29.78

AREA TABLE

COMMON ELEMENT "A"	3,254 S.F.
COMMON ELEMENT "F" 30' FOOT WIDE PUBLIC SEWER AND DRAINAGE EASEMENT TO BE PRIVATELY MAINTAINED	1,286 S.F.

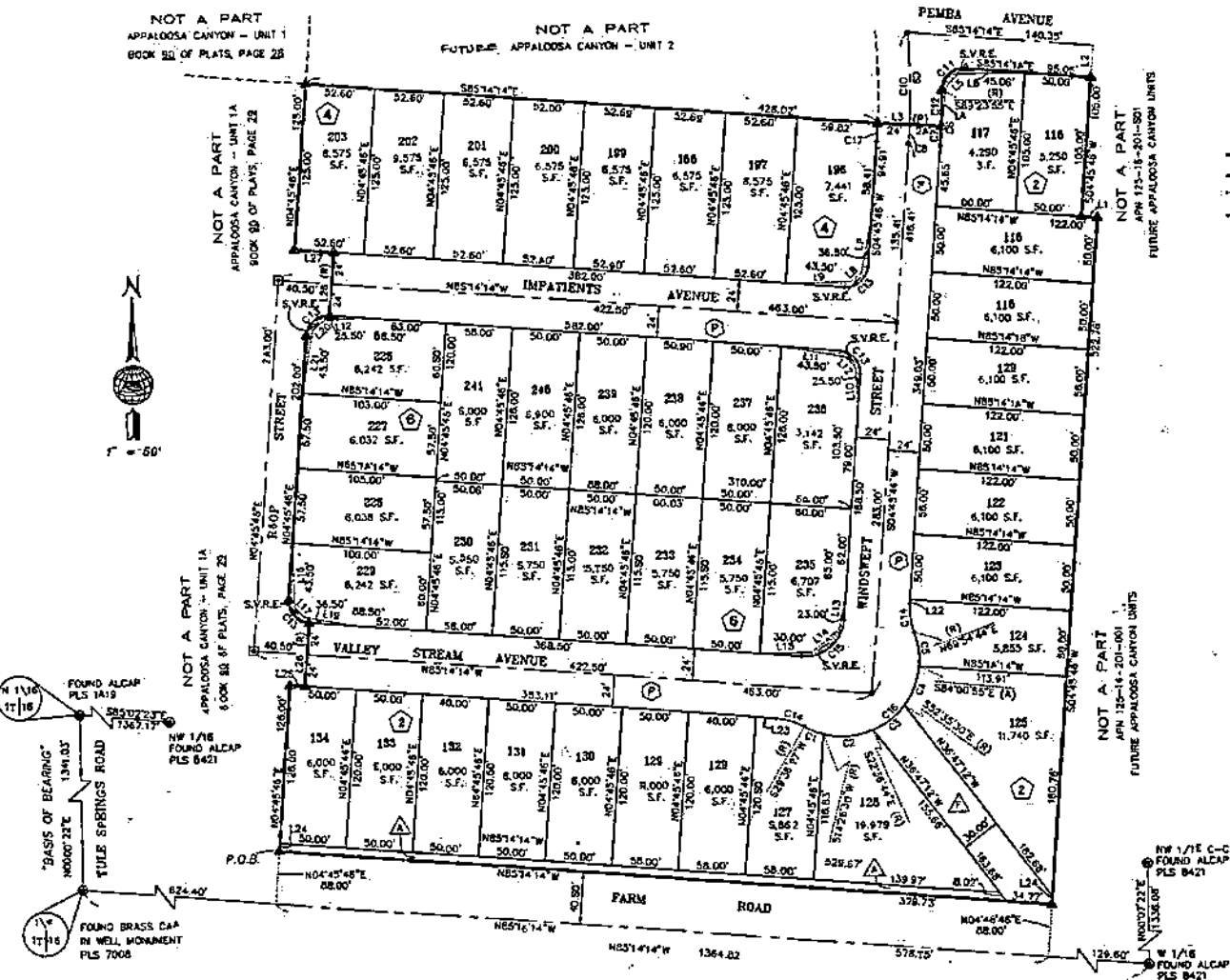
NOTE:
ALL COMMON ELEMENTS ARE TO BE MAINTAINED
BY THE HOMEOWNERS ASSOCIATION.

NOTE:
DIRECT VEHICULAR ACCESS TO FARM ROAD THROUGH COMMON
ELEMENT FROM ADJUTING LOTS SHALL BE PROHIBITED.

NOTE:
ALL REAR CORNERS SHALL BE SET WITH A NAIL AND
TAG P.L.S. 0955 ON BLOCK WALLS AND ALL FRONT OR
SIDE CORNERS ADJOINING PUBLIC RIGHT OF WAY SHALL
BE MARKED BY THE SCAFFOLDING OF THE BACK OF CURBS
ON THE PROLONGATION OF PROPERTY LINES.

LEGEND

- BOUNDARY LINE
- - - CENTERLINE
- - - EASEMENT LINE
- PROPERTY LINE
- SET 5/8" REBAR W/ALCAP
PLS # 8855 W/REFERENCE TAGS
- ▲ SET 5/8" REBAR W/ALCAP
PLS # 8855
- FOUND POINT AS NOTED
- ⊕ 5/8" REBAR W/ALCAP
PLS # 0055 W/REFERENCE TAGS
TO BE SET PER BOOK 80, PAGE 28
- (A) RADIAL BEARING
- 7 LOT NUMBER
- C1 CURVE NUMBER
- L1 LINE NUMBER
- S.F. SQUARE FEET
- A.U.E. PUBLIC UTILITY EASEMENT
- P.O.B. POINT OF BEGINNING
- APN ASSESSORS PARCEL NUMBER
- ⊙ PRIVATE STREETS AND P.U.E. AND
CITY OF LAS VEGAS SEWER EASEMENT
AND PUBLIC DRAINAGE EASEMENT
TO BE PRIVATELY MAINTAINED.
- ⬠ BLOCK NUMBER
- S.V.R.E. SIGHT VISIBILITY RESTRICTION
EASEMENT (NO LANDSCAPING OR
SIGHT RESTRICTING IMPROVEMENTS
TALLER THAN 30 INCHES ALLOWED
WITHIN SHADED PORTION OF SIGHT
VISIBILITY RESTRICTION EASEMENT.)
TO BE PRIVATELY MAINTAINED.



FILE COPY

2101 PL 51

POST: 975 Mark Cross Valley Parkway
SUNBELT, Suite 200
Socorro, Nevada, 89734
S0424 & Telephone: 702/333-7773
JUN-CAN FOR 702/333-7788

ENGINEERING - PLANNING - SURVEYING - CONSTRUCTION SERVICES