

# QUAIL RUN @ ELKHORN SPRINGS - UNIT 2

Recorded in Book 100 Page 37 of Plats

200 Scale Map Location: G-16-1

Fire Dept. District Map # 1417:12, 13

MASTER SITE ADDRESS: 8201 GRAND TETON DR

BLOCK 1	LOT	24	8128	QUAIL NEST AVE	EW	PRIVATE STREET
		25	8200			
		26	8204			
		27	8208			
		28	8212			
BLOCK 1	LOT	29	7955	QUAIL PRAIRIE ST	N/S	PRIVATE STREET
		30	7951			
		31	7947			
		32	7943			
		33	7939			
		34	7935			
BLOCK 1	LOT	35	7936	QUAIL HARBOR ST	N/S	PRIVATE STREET
		36	7940			
		37	7944			
		38	7948			
		39	7952			
		40	7956			
BLOCK 1	LOT	41	8250	QUAIL GORGE AVE	EW	PRIVATE STREET
		42	8254			
		43	8258			
		44	8262			
BLOCK 1	LOT	45	7955	QUAIL HEAVEN ST	N/S	PRIVATE STREET
		46	7951			
		47	7947			
		48	7943			
		49	7939			
		50	7935			
		51	7931			
BLOCK 1	LOT	52	8269	QUAIL ARROYO AVE	EW	PRIVATE STREET
		53	8265			
		54	8261			
		55	8257			
		56	8253			
		57	8249			
		58	8245			
BLOCK 2	LOT	59	7936	QUAIL HEAVEN ST	N/S	PRIVATE STREET
		60	7940			
		61	7944			
		62	7948			
		63	7952			
BLOCK 2	LOT	64	7951	QUAIL HARBOR ST	N/S	PRIVATE STREET
		65	7947			

## QUAIL RUN @ ELKHORN SPRINGS - UNIT 2

BLOCK 2	LOT	66 7943 67 7939 68 7935	QUAIL HARBOR ST	N/S	PRIVATE STREET
BLOCK 3	LOT	69 7936 70 7940 71 7944 72 7948 73 7952	QUAIL PRAIRIE ST	N/S	PRIVATE STREET
BLOCK 3	LOT	74 7951 75 7947 76 7943 77 7939 78 7935	QUAIL CAP ST	N/S	PRIVATE STREET
BLOCK 4	LOT	79 8225 80 8221 81 8217 82 8213 83 8209 84 8205 85 8201	QUAIL ARROYO AVE	E/W	PRIVATE STREET
BLOCK 4	LOT	86 7932 87 7936 88 7940 89 7944 90 7948 91 7952	QUAIL CAP ST	N/S	PRIVATE STREET
Common Area	A	8203	GRAND TETON DR	E/W	PUBLIC STREET

No addresses for CINELLI FALLS STREET, QUAIL VIEW STREET (N/S Private Streets), or JO MARCY DRIVE (E/W Public Street).

ORIGINAL DATE: 6/08/2001

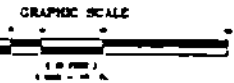
CITY OF LAS VEGAS  
PLANNING & DEVELOPMENT DEPARTMENT

  
PAUL BENGTSON, PLANNER I

Final Copy

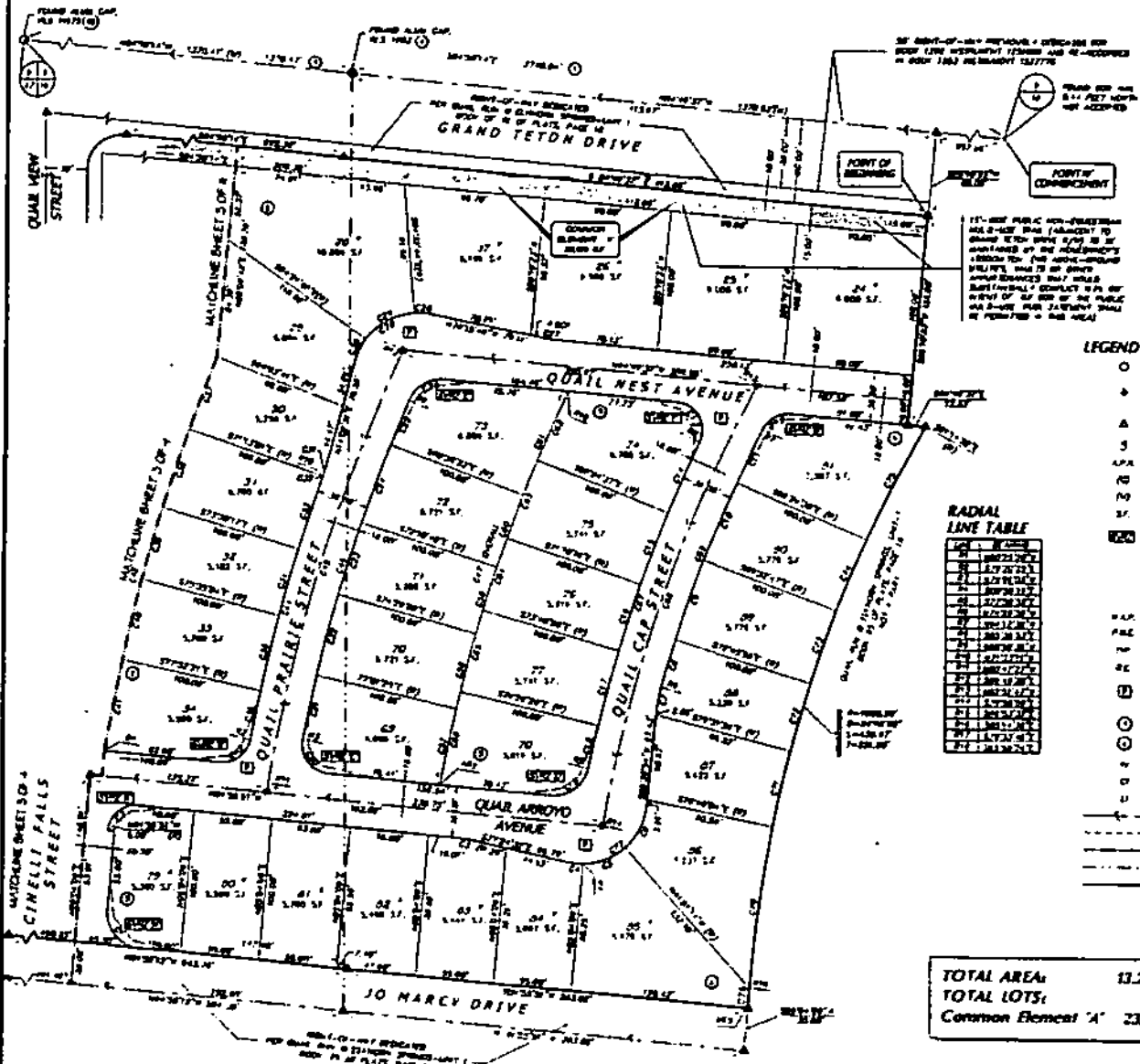
# FINAL MAP OF QUAIL RUN @ ELKHORN SPRINGS - UNIT 2

A COMMON INTEREST COMMUNITY  
A PORTION OF THE NORTH HALF IN 1/2 OF THE NORTHWEST QUARTER 36W 14N  
OF SECTION 16, TOWNSHIP 4 SOUTH RANGE 48 EAST, NEADL  
CITY OF LAS VEGAS, CLAY COUNTY, NEVADA



### NOTES

- ALL COMMON ELEMENTS SHOWN HEREON ARE PLATS AND RECORD LABELS/PLACEMENTS AND ARE TO BE MAINTAINED BY THE HOMEOWNER'S ASSOCIATION.
- ALL NEAR AND ADJACENT TRACTS BE SET WITH A 1/4" AND THE BOUNDARY "LINE 1/4" ON EACH SIDE. ALL FRONT AND SIDE LOT CENTER ALLEVIATION PLATS (OR NEARBY STREETS) SHALL BE SHOWN AT THE SHORTEST OF THE BACK OF EACH OF THE PUBLICATIONS OF THE PROPERTY LINES.
- NEARBY SERVICES SHALL BE MAINTAINED AND/OR IMPROVED BY THE HOMEOWNER'S ASSOCIATION.
- LOTTES WITH AN ACREAGE (±) ARE APPROXIMATE SQUARE FEETAGE OF THE RESPECTIVE LOTS. ACCESS TO GRADE ELEVATION SHOWN AS SHOWN HEREON AT QUAIL ARROYO STREET.



### MAP REFERENCES

- ① FILE 43 OF SURVEYS, PAGE 14
- ② BODY 40 OF PLATS, PAGE 74
- ③ BODY 38 OF PLATS, PAGE 68
- ④ BODY 42 OF PLATS, PAGE 72
- ⑤ BODY 41 OF PLATS, PAGE 70
- ⑥ BODY 43 OF PLATS, PAGE 73
- ⑦ BODY 44 OF PLATS, PAGE 75
- ⑧ BODY 45 OF PLATS, PAGE 76
- ⑨ BODY 46 OF PLATS, PAGE 77
- ⑩ BODY 47 OF PLATS, PAGE 78
- ⑪ BODY 48 OF PLATS, PAGE 79
- ⑫ BODY 49 OF PLATS, PAGE 80
- ⑬ BODY 50 OF PLATS, PAGE 81
- ⑭ BODY 51 OF PLATS, PAGE 82
- ⑮ BODY 52 OF PLATS, PAGE 83
- ⑯ BODY 53 OF PLATS, PAGE 84
- ⑰ BODY 54 OF PLATS, PAGE 85
- ⑱ BODY 55 OF PLATS, PAGE 86
- ⑲ BODY 56 OF PLATS, PAGE 87
- ⑳ BODY 57 OF PLATS, PAGE 88
- ㉑ BODY 58 OF PLATS, PAGE 89
- ㉒ BODY 59 OF PLATS, PAGE 90
- ㉓ BODY 60 OF PLATS, PAGE 91
- ㉔ BODY 61 OF PLATS, PAGE 92
- ㉕ BODY 62 OF PLATS, PAGE 93
- ㉖ BODY 63 OF PLATS, PAGE 94
- ㉗ BODY 64 OF PLATS, PAGE 95
- ㉘ BODY 65 OF PLATS, PAGE 96
- ㉙ BODY 66 OF PLATS, PAGE 97
- ㉚ BODY 67 OF PLATS, PAGE 98
- ㉛ BODY 68 OF PLATS, PAGE 99
- ㉜ BODY 69 OF PLATS, PAGE 100
- ㉝ BODY 70 OF PLATS, PAGE 101
- ㉞ BODY 71 OF PLATS, PAGE 102
- ㉟ BODY 72 OF PLATS, PAGE 103
- ㊱ BODY 73 OF PLATS, PAGE 104
- ㊲ BODY 74 OF PLATS, PAGE 105
- ㊳ BODY 75 OF PLATS, PAGE 106
- ㊴ BODY 76 OF PLATS, PAGE 107
- ㊵ BODY 77 OF PLATS, PAGE 108
- ㊶ BODY 78 OF PLATS, PAGE 109
- ㊷ BODY 79 OF PLATS, PAGE 110
- ㊸ BODY 80 OF PLATS, PAGE 111
- ㊹ BODY 81 OF PLATS, PAGE 112
- ㊺ BODY 82 OF PLATS, PAGE 113
- ㊻ BODY 83 OF PLATS, PAGE 114
- ㊼ BODY 84 OF PLATS, PAGE 115
- ㊽ BODY 85 OF PLATS, PAGE 116
- ㊾ BODY 86 OF PLATS, PAGE 117
- ㊿ BODY 87 OF PLATS, PAGE 118

### CURVE TABLE

Curve No.	Radius (ft)	Chord (ft)	Area (sq ft)	Perimeter (ft)
1	100	100	7854	628
2	200	200	31416	1257
3	300	300	70686	1885
4	400	400	125664	2513
5	500	500	196350	3142
6	600	600	272664	3771
7	700	700	354606	4400
8	800	800	442176	5029
9	900	900	535374	5658
10	1000	1000	634200	6287
11	1100	1100	738654	6916
12	1200	1200	848736	7545
13	1300	1300	964446	8174
14	1400	1400	1085784	8803
15	1500	1500	1212850	9432
16	1600	1600	1345644	10061
17	1700	1700	1484266	10690
18	1800	1800	1628816	11319
19	1900	1900	1779394	11948
20	2000	2000	1936000	12577
21	2100	2100	2098734	13206
22	2200	2200	2267606	13835
23	2300	2300	2442726	14464
24	2400	2400	2624104	15093
25	2500	2500	2811840	15722
26	2600	2600	3006044	16351
27	2700	2700	3206826	16980
28	2800	2800	3414296	17609
29	2900	2900	3628564	18238
30	3000	3000	3849740	18867
31	3100	3100	4077934	19496
32	3200	3200	4313266	20125
33	3300	3300	4555846	20754
34	3400	3400	4805684	21383
35	3500	3500	5062900	22012
36	3600	3600	5327614	22641
37	3700	3700	5600036	23270
38	3800	3800	5880276	23899
39	3900	3900	6168454	24528
40	4000	4000	6464680	25157
41	4100	4100	6769064	25786
42	4200	4200	7081716	26415
43	4300	4300	7402746	27044
44	4400	4400	7732264	27673
45	4500	4500	8070480	28302
46	4600	4600	8417504	28931
47	4700	4700	8773446	29560
48	4800	4800	9138516	30189
49	4900	4900	9512924	30818
50	5000	5000	9896880	31447
51	5100	5100	10290604	32076
52	5200	5200	10694306	32705
53	5300	5300	11108200	33334
54	5400	5400	11532504	33963
55	5500	5500	11967436	34592
56	5600	5600	12413206	35221
57	5700	5700	12870034	35850
58	5800	5800	13338140	36479
59	5900	5900	13817744	37108
60	6000	6000	14309066	37737
61	6100	6100	14812326	38366
62	6200	6200	15327744	38995
63	6300	6300	15855540	39624
64	6400	6400	16395936	40253
65	6500	6500	16949240	40882
66	6600	6600	17515680	41511
67	6700	6700	18095476	42140
68	6800	6800	18688840	42769
69	6900	6900	19296000	43398
70	7000	7000	19917276	44027
71	7100	7100	20552880	44656
72	7200	7200	21203040	45285
73	7300	7300	21868080	45914
74	7400	7400	22548320	46543
75	7500	7500	23243980	47172
76	7600	7600	23955380	47801
77	7700	7700	24682840	48430
78	7800	7800	25426680	49059
79	7900	7900	26187240	49688
80	8000	8000	26963840	50317
81	8100	8100	27756800	50946
82	8200	8200	28566440	51575
83	8300	8300	29393000	52204
84	8400	8400	30236800	52833
85	8500	8500	31098080	53462
86	8600	8600	31976160	54091
87	8700	8700	32871280	54720
88	8800	8800	33783880	55349
89	8900	8900	34714300	55978
90	9000	9000	35662880	56607
91	9100	9100	36629960	57236
92	9200	9200	37615000	57865
93	9300	9300	38618440	58494
94	9400	9400	39640720	59123
95	9500	9500	40682300	59752
96	9600	9600	41743640	60381
97	9700	9700	42825100	61010
98	9800	9800	43927120	61639
99	9900	9900	45049960	62268
100	10000	10000	46194000	62897

### LEGEND

- COMMON ELEMENTS AS SHOWN
- SET 1/4" BOUNDARY AND COMMON CAP, MARKED "LINE 1/4", WITH REFERENCE TO
- △ SET 1/4" BOUNDARY AND COMMON CAP, MARKED "LINE 1/4"
- 3 LOT NUMBER, TRACT
- APX ADJACENT PAGES NUMBER
- CURVE CENTER
- NO WEATHER
- 3/4" SQUARE FOOT
- ① (1/4") BOUNDARY AND COMMON CAP, MARKED "LINE 1/4", WITH REFERENCE TO
- ② (1/4") BOUNDARY AND COMMON CAP, MARKED "LINE 1/4"
- ③ (1/4") BOUNDARY AND COMMON CAP, MARKED "LINE 1/4"
- ④ (1/4") BOUNDARY AND COMMON CAP, MARKED "LINE 1/4"
- ⑤ (1/4") BOUNDARY AND COMMON CAP, MARKED "LINE 1/4"
- ⑥ (1/4") BOUNDARY AND COMMON CAP, MARKED "LINE 1/4"
- ⑦ (1/4") BOUNDARY AND COMMON CAP, MARKED "LINE 1/4"
- ⑧ (1/4") BOUNDARY AND COMMON CAP, MARKED "LINE 1/4"
- ⑨ (1/4") BOUNDARY AND COMMON CAP, MARKED "LINE 1/4"
- ⑩ (1/4") BOUNDARY AND COMMON CAP, MARKED "LINE 1/4"
- ⑪ (1/4") BOUNDARY AND COMMON CAP, MARKED "LINE 1/4"
- ⑫ (1/4") BOUNDARY AND COMMON CAP, MARKED "LINE 1/4"
- ⑬ (1/4") BOUNDARY AND COMMON CAP, MARKED "LINE 1/4"
- ⑭ (1/4") BOUNDARY AND COMMON CAP, MARKED "LINE 1/4"
- ⑮ (1/4") BOUNDARY AND COMMON CAP, MARKED "LINE 1/4"
- ⑯ (1/4") BOUNDARY AND COMMON CAP, MARKED "LINE 1/4"
- ⑰ (1/4") BOUNDARY AND COMMON CAP, MARKED "LINE 1/4"
- ⑱ (1/4") BOUNDARY AND COMMON CAP, MARKED "LINE 1/4"
- ⑲ (1/4") BOUNDARY AND COMMON CAP, MARKED "LINE 1/4"
- ⑳ (1/4") BOUNDARY AND COMMON CAP, MARKED "LINE 1/4"
- ㉑ (1/4") BOUNDARY AND COMMON CAP, MARKED "LINE 1/4"
- ㉒ (1/4") BOUNDARY AND COMMON CAP, MARKED "LINE 1/4"
- ㉓ (1/4") BOUNDARY AND COMMON CAP, MARKED "LINE 1/4"
- ㉔ (1/4") BOUNDARY AND COMMON CAP, MARKED "LINE 1/4"
- ㉕ (1/4") BOUNDARY AND COMMON CAP, MARKED "LINE 1/4"
- ㉖ (1/4") BOUNDARY AND COMMON CAP, MARKED "LINE 1/4"
- ㉗ (1/4") BOUNDARY AND COMMON CAP, MARKED "LINE 1/4"
- ㉘ (1/4") BOUNDARY AND COMMON CAP, MARKED "LINE 1/4"
- ㉙ (1/4") BOUNDARY AND COMMON CAP, MARKED "LINE 1/4"
- ㉚ (1/4") BOUNDARY AND COMMON CAP, MARKED "LINE 1/4"
- ㉛ (1/4") BOUNDARY AND COMMON CAP, MARKED "LINE 1/4"
- ㉜ (1/4") BOUNDARY AND COMMON CAP, MARKED "LINE 1/4"
- ㉝ (1/4") BOUNDARY AND COMMON CAP, MARKED "LINE 1/4"
- ㉞ (1/4") BOUNDARY AND COMMON CAP, MARKED "LINE 1/4"
- ㉟ (1/4") BOUNDARY AND COMMON CAP, MARKED "LINE 1/4"
- ㊱ (1/4") BOUNDARY AND COMMON CAP, MARKED "LINE 1/4"
- ㊲ (1/4") BOUNDARY AND COMMON CAP, MARKED "LINE 1/4"
- ㊳ (1/4") BOUNDARY AND COMMON CAP, MARKED "LINE 1/4"
- ㊴ (1/4") BOUNDARY AND COMMON CAP, MARKED "LINE 1/4"
- ㊵ (1/4") BOUNDARY AND COMMON CAP, MARKED "LINE 1/4"
- ㊶ (1/4") BOUNDARY AND COMMON CAP, MARKED "LINE 1/4"
- ㊷ (1/4") BOUNDARY AND COMMON CAP, MARKED "LINE 1/4"
- ㊸ (1/4") BOUNDARY AND COMMON CAP, MARKED "LINE 1/4"
- ㊹ (1/4") BOUNDARY AND COMMON CAP, MARKED "LINE 1/4"
- ㊺ (1/4") BOUNDARY AND COMMON CAP, MARKED "LINE 1/4"
- ㊻ (1/4") BOUNDARY AND COMMON CAP, MARKED "LINE 1/4"
- ㊼ (1/4") BOUNDARY AND COMMON CAP, MARKED "LINE 1/4"
- ㊽ (1/4") BOUNDARY AND COMMON CAP, MARKED "LINE 1/4"
- ㊾ (1/4") BOUNDARY AND COMMON CAP, MARKED "LINE 1/4"
- ㊿ (1/4") BOUNDARY AND COMMON CAP, MARKED "LINE 1/4"

### RADIAL LINE TABLE

Radius (ft)	Chord (ft)	Area (sq ft)	Perimeter (ft)
100	100	7854	628
200	200	31416	1257
300	300	70686	1885
400	400	125664	2513
500	500	196350	3142
600	600	272664	3771
700	700	354606	4400
800	800	442176	5029
900	900	535374	5658
1000	1000	634200	6287

TOTAL AREA: 13.26 Acres  
TOTAL LOTS: 68  
Common Element "A" 23,169 S.F.

**CVL**  
CONSULTANTS, INC.  
11-99  
Drawn by: SPY/ANGS  
Checked by: C. Camp  
No. 99-0050-03  
DATE: 3 of 4



# QUAIL RUN @ ELKHORN SPRINGS - UNIT 2

Recorded in Book 100 Page 37 of Plats

200 Scale Map Location: G-16-1

Fire Dept. District Map # 1417:12, 13

MASTER SITE ADDRESS: 8201 GRAND TETON DR

BLOCK 1	LOT	24	8128	QUAIL NEST AVE	E/W	PRIVATE STREET
		25	8200			
		26	8204			
		27	8208			
		28	8212			
BLDCK 1	LOT	29	7955	QUAIL PRAIRIE ST	N/S	PRIVATE STREET
		30	7951			
		31	7947			
		32	7943			
		33	7939			
		34	7935			
BLOCK 1	LOT	35	7936	QUAIL HARBOR ST	N/S	PRIVATE STREET
		36	7940			
		37	7944			
		38	7948			
		39	7952			
		40	7956			
BLOCK 1	LOT	41	8250	QUAIL GORGE AVE	E/W	PRIVATE STREET
		42	8254			
		43	8258			
		44	8262			
BLOCK 1	LOT	45	7955	QUAIL HEAVEN ST	N/S	PRIVATE STREET
		46	7951			
		47	7947			
		48	7943			
		49	7939			
		50	7935			
		51	7931			
BLOCK 1	LOT	52	8269	QUAIL ARROYO AVE	E/W	PRIVATE STREET
		53	8265			
		54	8261			
		55	8257			
		56	8253			
		57	8249			
		58	8245			
BLOCK 2	LOT	59	7936	QUAIL HEAVEN ST	N/S	PRIVATE STREET
		60	7940			
		61	7944			
		62	7948			
		63	7952			
BLOCK 2	LOT	64	7951	QUAIL HARBOR ST	N/S	PRIVATE STREET
		65	7947			

## QUAIL RUN @ ELKHORN SPRINGS - UNIT 2

BLOCK 2	LOT	66	7943	QUAIL HARBOR ST	N/S	PRIVATE STREET
		67	7939			
		68	7935			
BLOCK 3	LOT	69	7936	QUAIL PRAIRIE ST	N/S	PRIVATE STREET
		70	7940			
		71	7944			
		72	7948			
		73	7952			
BLOCK 3	LOT	74	7951	QUAIL CAP ST	N/S	PRIVATE STREET
		75	7947			
		76	7943			
		77	7939			
		78	7935			
BLOCK 4	LOT	79	8225	QUAIL ARROYO AVE	E/W	PRIVATE STREET
		80	8221			
		81	8217			
		82	8213			
		83	8209			
		84	8205			
		85	8201			
BLOCK 4	LOT	86	7932	QUAIL CAP ST	N/S	PRIVATE STREET
		87	7936			
		88	7940			
		89	7944			
		90	7948			
		91	7952			
Common Area	A	8203		GRAND TETON DR	E/W	PUBLIC STREET

No addresses for CINELLI FALLS STREET, QUAIL VIEW STREET (N/S Private Streets), or JO MARCY DRIVE (E/W Public Street).

ORIGINAL DATE: 6/08/2001

CITY OF LAS VEGAS  
PLANNING & DEVELOPMENT DEPARTMENT

  
PAUL BENGTSON, PLANNER I

# QUAIL RUN @ ELKHORN SPRINGS.- UNIT 2

Recorded in Book 100 Page 37 of Plats

200 Scale Map Location: G-16-1

Fire Dept. District Map # 1417:12, 13

MASTER SITE ADDRESS: 8201 GRAND TETON DR

BLOCK 1	LOT	24	8128	QUAIL NEST AVE	E/W	PRIVATE STREET
		25	8200			
		26	8204			
		27	8208			
		28	8212			
BLOCK 1	LOT	29	7955	QUAIL PRAIRIE ST	N/S	PRIVATE STREET
		30	7951			
		31	7947			
		32	7943			
		33	7939			
		34	7935			
BLOCK 1	LOT	35	7936	QUAIL HARBOR ST	N/S	PRIVATE STREET
		36	7940			
		37	7944			
		38	7948			
		39	7952			
		40	7956			
BLOCK 1	LOT	41	8250	QUAIL GORGE AVE	E/W	PRIVATE STREET
		42	8254			
		43	8258			
		44	8262			
BLOCK 1	LOT	45	7955	QUAIL HEAVEN ST	N/S	PRIVATE STREET
		46	7951			
		47	7947			
		48	7943			
		49	7939			
		50	7935			
		51	7931			
BLDCK 1	LOT	52	8269	QUAIL ARROYO AVE.	E/W	PRIVATE STREET
		53	8265			
		54	8261			
		55	8257			
		56	8253			
		57	8249			
		58	8245			
BLOCK 2	LOT	59	7936	QUAIL HEAVEN ST	N/S	PRIVATE STREET
		60	7940			
		61	7944			
		62	7948			
		63	7952			
BLOCK 2	LOT	64	7951	QUAIL HARBOR ST	N/S	PRIVATE STREET
		65	7947			

## QUAIL RUN @ ELKHORN SPRINGS - UNIT 2

BLOCK 2	LOT	66	7943	QUAIL HARBOR ST	N/S	PRIVATE STREET
		67	7939			
		68	7935			
BLOCK 3	LOT	69	7936	QUAIL PRAIRIE ST	N/S	PRIVATE STREET
		70	7940			
		71	7944			
		72	7948			
		73	7952			
BLOCK 3	LOT	74	7951	QUAIL CAP ST	N/S	PRIVATE STREET
		75	7947			
		76	7943			
		77	7939			
		78	7935			
BLOCK 4	LOT	79	8225	QUAIL ARROYO AVE	E/W	PRIVATE STREET
		80	8221			
		81	8217			
		82	8213			
		83	8209			
		84	8205			
		85	8201			
BLOCK 4	LOT	86	7932	QUAIL CAP ST	N/S	PRIVATE STREET
		87	7936			
		88	7940			
		89	7944			
		90	7948			
		91	7952			
Common Area	A	8203	GRAND TETON DR	E/W	PUBLIC STREET	

No addresses for CINELLI FALLS STREET, QUAIL VIEW STREET (N/S Private Streets), or JO MARCY DRIVE (E/W Public Street).

ORIGINAL DATE: 6/08/2001

CITY OF LAS VEGAS  
PLANNING & DEVELOPMENT DEPARTMENT

  
PAUL BENGTSON, PLANNER I

# QUAIL RUN @ ELKHORN SPRINGS - UNIT 2

Recorded in Book 100 Page 37 of Plats

200 Scale Map Location: G-16-1

Fire Dept. District Map # 1417:12, 13

MASTER SITE ADDRESS: 8201 GRAND TETON DR

BLOCK 1	LOT	24	8128	QUAIL NEST AVE	E/W	PRIVATE STREET
		25	8200			
		26	8204			
		27	8208			
		28	8212			
BLOCK 1	LOT	29	7955	QUAIL PRAIRIE ST	N/S	PRIVATE STREET
		30	7951			
		31	7947			
		32	7943			
		33	7939			
		34	7935			
BLOCK 1	LOT	35	7936	QUAIL HARBOR ST	N/S	PRIVATE STREET
		36	7940			
		37	7944			
		38	7948			
		39	7952			
		40	7956			
BLOCK 1	LOT	41	8250	QUAIL GORGE AVE	E/W	PRIVATE STREET
		42	8254			
		43	8258			
		44	8262			
BLOCK 1	LOT	45	7955	QUAIL HEAVEN ST	N/S	PRIVATE STREET
		46	7951			
		47	7947			
		48	7943			
		49	7939			
		50	7935			
		51	7931			
BLOCK 1	LOT	52	8269	QUAIL ARROYO AVE	E/W	PRIVATE STREET
		53	8265			
		54	8261			
		55	8257			
		56	8253			
		57	8249			
		58	8245			
BLOCK 2	LOT	59	7936	QUAIL HEAVEN ST	N/S	PRIVATE STREET
		60	7940			
		61	7944			
		62	7948			
		63	7952			
BLOCK 2	LOT	64	7951	QUAIL HARBOR ST	N/S	PRIVATE STREET
		65	7947			

## QUAIL RUN @ ELKHORN SPRINGS - UNIT 2

BLOCK 2	LOT	66	7943	QUAIL HARBOR ST	N/S	PRIVATE STREET
		67	7939			
		68	7935			
BLOCK 3	LOT	69	7936	QUAIL PRAIRIE ST	N/S	PRIVATE STREET
		70	7940			
		71	7944			
		72	7948			
		73	7952			
BLOCK 3	LOT	74	7951	QUAIL CAP ST	N/S	PRIVATE STREET
		75	7947			
		76	7943			
		77	7939			
		78	7935			
BLOCK 4	LOT	79	8225	QUAIL ARROYO AVE	E/W	PRIVATE STREET
		80	8221			
		81	8217			
		82	8213			
		83	8209			
		84	8205			
		85	8201			
BLOCK 4	LOT	86	7932	QUAIL CAP ST	N/S	PRIVATE STREET
		87	7936			
		88	7940			
		89	7944			
		90	7948			
		91	7952			
Common Area	A	8203		GRAND TETON DR	E/W	PUBLIC STREET

No addresses for CINELLI FALLS STREET, QUAIL VIEW STREET (N/S Private Streets), or JO MARCY DRIVE (E/W Public Street).

ORIGINAL DATE: 6/08/2001

**CITY OF LAS VEGAS  
PLANNING & DEVELOPMENT DEPARTMENT**

  
**PAUL BENGTSON, PLANNER I**