

APPALOOSA CANYON - UNIT 4A

Recorded in Book 103 Page 34 of Plats

200 Scale Map Location: G-16-3

Fire Dept. District Map # 1417:44

MASTER SITE ADDRESS: 8098 FARM RD

BLOCK 1	LOT	72	7708	GOLDEN FILLY ST	N/S	PRIVATE STREET
		73	7704			
		74	7700			
		75	7636			
		76	7632			
		77	7628			
		78	7624			
		79	7620			
		80	7616			
		81	7612			
		82	7608			
BLOCK 1	LOT	83	8049	DESERT CLOUD AVE	E/W	PRIVATE STREET
		84	8053			
		85	8057			
		86	8061			
		87	8065			
		88	8069			
		89	8073			
		90	8077			
		91	8081			
		92	8085			
		93	8089			
94	8093					
95	8097					
BLOCK 8	LOT	275	8096	CHESTNUT GLEN AVE	E/W	PRIVATE STREET
		276	8092			
		277	8088			
		278	8084			
		279	8080			
		280	8076			
		281	8072			
BLOCK 8	LOT	282	7638	OLDENBURG ST	N/S	PRIVATE STREET
		283	7632			
		284	7628			
		285	7624			
		286	7620			
		287	7616			
BLOCK 8	LOT	288	7615	GOLDEN FILLY ST	N/S	PRIVATE STREET
		289	7619			
		290	7623			
		291	7627			
		292	7631			
		293	7635			
		294	7639			
295	7701					

APPALOOSA CANYON - UNIT 4A

BLOCK 9	LOT	249	8096	DESERT CLOUD AVE	E/W	PRIVATE STREET
		250	8092			
		251	8088			
		252	8084			
		253	8080			
		254	8076			
BLOCK 9	LDT	255	8077	CHESTNUT GLEN AVE	E/W	PRIVATE STREET
		256	8081			
		257	8085			
		258	8089			
		259	8093			
		260	8097			
Common Area	A	7621	N CIMARRON RD	E/W	PUBLIC STREET	
Common Area	C	8041	DESERT CLOUD AVE	E/W	PRIVATE STREET	

ORIGINAL DATE: 1/17/2002

CITY OF LAS VEGAS
PLANNING & DEVELOPMENT DEPARTMENT

Adrienne M. Low

ADRIENNE LOW, PLANNER I

APPALOOSA CANYON - UNIT 4A

Recorded in Book 103 Page 34 of Plats

200 Scale Map Location: G-16-3

Fire Dept. District Map # 1417:44

MASTER SITE ADDRESS: 8098 FARM RD

BLOCK 1	LOT	72	7708	GOLDEN FILLY ST	N/S	PRIVATE STREET
		73	7704			
		74	7700			
		75	7636			
		76	7632			
		77	7628			
		78	7624			
		79	7620			
		80	7616			
		81	7612			
		82	7608			
BLOCK 1	LOT	83	8049	DESERT CLOUD AVE	E/W	PRIVATE STREET
		84	8053			
		85	8057			
		86	8061			
		87	8065			
		88	8069			
		89	8073			
		90	8077			
		91	8081			
		92	8085			
		93	8089			
		94	8093			
		95	8097			
BLOCK 8	LOT	275	8096	CHESTNUT GLEN AVE	E/W	PRIVATE STREET
		276	8092			
		277	8088			
		278	8084			
		279	8080			
		280	8076			
		281	8072			
		BLOCK 8	LOT			
283	7632					
284	7628					
285	7624					
286	7620					
287	7616					
BLOCK 8	LOT	288	7615	GOLDEN FILLY ST	N/S	PRIVATE STREET
		289	7619			
		290	7623			
		291	7627			
		292	7631			
		293	7635			
		294	7639			
		295	7701			

APPALOOSA CANYON - UNIT 4A

BLOCK 9	LOT	249	8096	DESERT CLOUD AVE	E/W	PRIVATE STREET
		250	8092			
		251	8088			
		252	8084			
		253	8080			
		254	8076			
BLOCK 9	LOT	255	8077	CHESTNUT GLEN AVE	E/W	PRIVATE STREET
		256	8081			
		257	8085			
		258	8089			
		259	8093			
		260	8097			
Common Area	A	7621	N	CIMARRON RD	E/W	PUBLIC STREET
Common Area	C	8041		DESERT CLOUD AVE	E/W	PRIVATE STREET

ORIGINAL DATE: 1/17/2002

CITY OF LAS VEGAS
PLANNING & DEVELOPMENT DEPARTMENT

Adrienne M. Low

ADRIENNE LOW, PLANNER I

APPALOOSA CANYON - UNIT 4A

Recorded in Book 103 Page 34 of Plats

200 Scale Map Location: G-16-3

Fire Dept. District Map # 1417:44

MASTER SITE ADDRESS: 8098 FARM RD

BLOCK 1	LOT	72	7708	GOLDEN FILLY ST	N/S	PRIVATE STREET
		73	7704			
		74	7700			
		75	7636			
		76	7632			
		77	7628			
		78	7624			
		79	7620			
		80	7616			
		81	7612			
		82	7608			
BLOCK 1	LOT	83	8049	DESERT CLOUD AVE	E/W	PRIVATE STREET
		84	8053			
		85	8057			
		86	8061			
		87	8065			
		88	8069			
		89	8073			
		90	8077			
		91	8081			
		92	8085			
		93	8089			
		94	8093			
		95	8097			
BLOCK 8	LOT	275	8096	CHESTNUT GLEN AVE	E/W	PRIVATE STREET
		276	8092			
		277	8088			
		278	8084			
		279	8080			
		280	8076			
		281	8072			
BLOCK 8	LOT	282	7636	OLDENBURG ST	N/S	PRIVATE STREET
		283	7632			
		284	7628			
		285	7624			
		286	7620			
		287	7616			
BLOCK 8	LOT	288	7615	GOLOEN FILLY ST	N/S	PRIVATE STREET
		289	7619			
		290	7623			
		291	7627			
		292	7631			
		293	7635			
		294	7639			
295	7701					

APPALOOSA CANYON - UNIT 4A

BLOCK 9	LOT	249	8096	DESERT CLOUD AVE	E/W	PRIVATE STREET
		250	8092			
		251	8088			
		252	8084			
		253	8080			
		254	8076			
BLOCK 9	LOT	255	8077	CHESTNUT GLEN AVE	E/W	PRIVATE STREET
		256	8081			
		257	8085			
		258	8089			
		259	8093			
		260	8097			
Common Area	A	7621	N CIMARRON RD	E/W	PUBLIC STREET	
Common Area	C	8041	DESERT CLOUD AVE	E/W	PRIVATE STREET	

ORIGINAL DATE: 1/17/2002

CITY OF LAS VEGAS
PLANNING & DEVELOPMENT DEPARTMENT

Adrienne M. Low

ADRIENNE LOW, PLANNER I

FILE COPY

REFERENCES
 RECORD OF SURVEY - FILE 83, PAGE 13

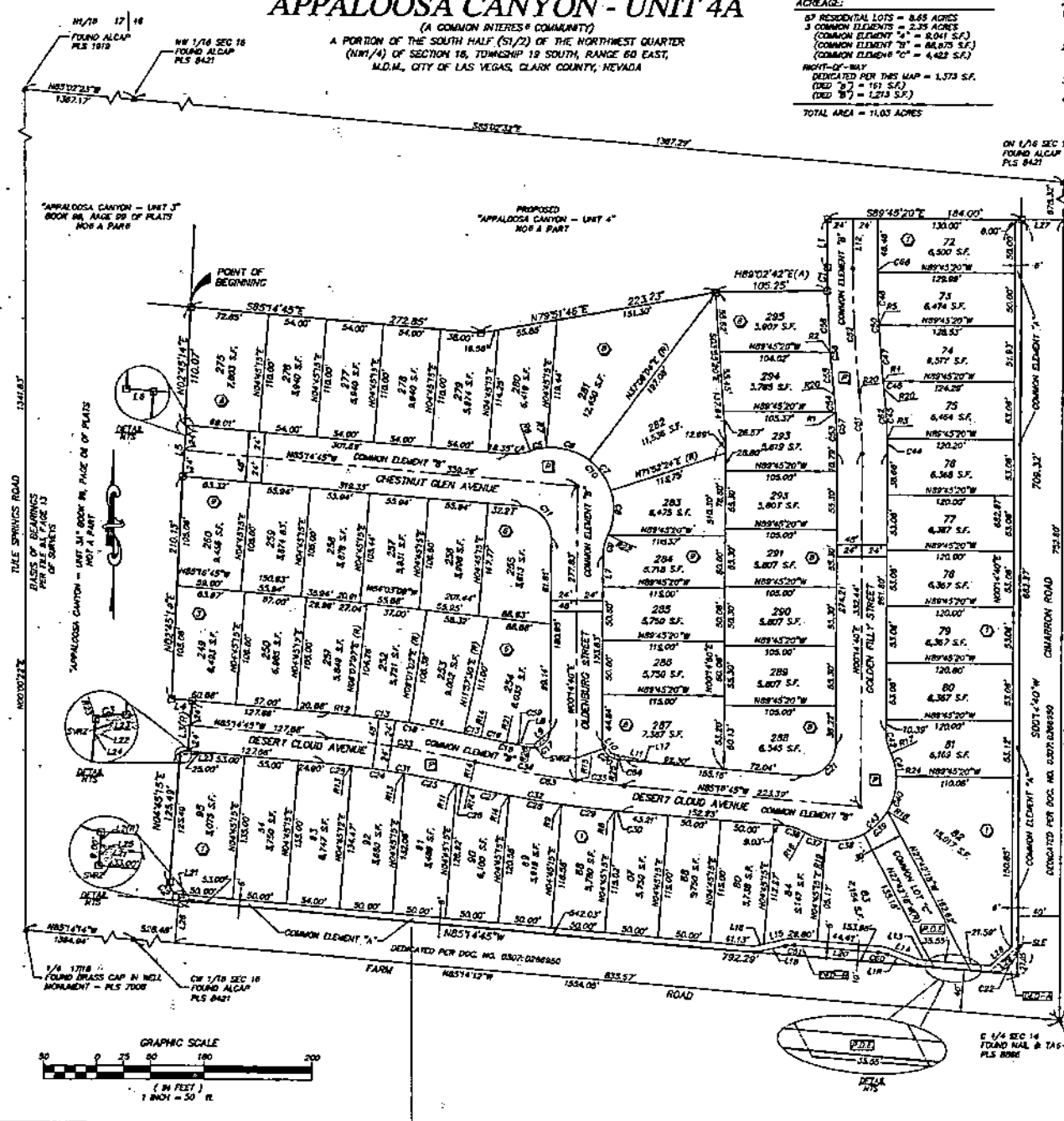
APPALOOSA CANYON - UNIT 4A

(A COMMON INTEREST COMMUNITY)
 A PORTION OF THE SOUTH HALF (S1/2) OF THE NORTHWEST QUARTER
 (NW1/4) OF SECTION 16, TOWNSHIP 19 SOUTH, RANGE 60 EAST,
 M.D.M., CITY OF LAS VEGAS, CLARK COUNTY, NEVADA

ACREAGE:
 67 RESIDENTIAL LOTS = 6.65 ACRES
 3 COMMON ELEMENTS = 2.35 ACRES
 (COMMON ELEMENT "A" = 0.841 S.F.)
 (COMMON ELEMENT "B" = 0.670 S.F.)
 (COMMON ELEMENT "C" = 4.422 S.F.)
 RIGHT-OF-WAY
 DEDICATED PER THIS MAP = 1.573 S.F.
 (DED "A" = 191 S.F.)
 (DED "B" = 1.213 S.F.)
 TOTAL AREA = 11.03 ACRES

NOTES:

- 1) ALL REAR LOT CORNERS SHALL BE SET WITH A NAIL AND BRASS TAG PLUS 10"14 ON BLOCK WALLS AND ALL FRONT OF LOT CORNERS ADJOINING PUBLIC RIGHT-OF-WAY SHALL BE MARKED BY THE SAW CUTTING OF THE BACK BE CURBS ON THE PROLONGATION OF THE PROPERTY LINES.
- 2) SIGHT VISIBILITY RESTRICTION ZONES ARE PUBLIC EASEMENTS AND AS SUCH THE HEIGHT OF LANDSCAPING AND PHYSICAL IMPROVEMENTS WITHIN THE ZONE ARE RESTRICTED TO A MAXIMUM OF 30 INCHES AND ARE PERMANENTLY MAINTAINED.
- 3) ALL COMMON ELEMENTS ARE TO BE MAINTAINED BY THE HOMEOWNERS ASSOCIATION.
- 4) DIRECT VEHICULAR ACCESS TO CHARRON ROAD AND FARM ROAD THROUGH COMMON ELEMENTS FROM ADJUTING LOTS IS PROHIBITED.



LEGEND:

- BOUNDARY LINE
 - LOF LINE
 - RIGHT-OF-WAY LINE
 - STREET CENTERLINE
 - EASEMENT LINE
 - FOUND MONUMENT AS NOTED
 - TO BE SET FOR ADJOINING UNIT
 - SET 5/8" REBAR AND ALCAP STAMPED - PLS 13061
 - SVRZ SIGHT VISIBILITY RESTRICTION ZONE (SEE NOTE 2)
 - NTS NOT TO SCALE
 - DED A & B DEDICATED RIGHT-OF-WAY TO THE CITY OF LAS VEGAS
- L1 LINE NUMBER
 - C1 CURVE NUMBER
 - R1 RADIAL NUMBER
 - (R) RADIAL LINE
 - L3 LOT NUMBER
 - (L) BLOCK NUMBER
 - APN ASSESSOR'S PARCEL NUMBER
 - S.F. SQUARE FEET
 - R-O-W RIGHT-OF-WAY
 - P.U.C. PUBLIC UTILITY EASEMENT, C.L.F. PUBLIC SEWER EASEMENT AND PUBLIC DRAINAGE EASEMENT TO BE PRIVATELY MAINTAINED
 - P PRIVATE DRIVE, PUBLIC UTILITY EASEMENT, C.L.F. PUBLIC SEWER EASEMENT, PUBLIC DRAINAGE EASEMENT, AND COMMON ELEMENT "B" TO BE PRIVATELY MAINTAINED
 - SLE STREET LIGHT EASEMENT

CURVE	DELTA	RADIUS	LENGTH	TANGENT
C1	0117.97	1024.00	21.43	10.72
C2	0200.00	1000.00	18.71	10.00
C3	247.50	175.00	7.21	4.85
C4	243.91	50.00	4.89	11.02
C5	181.91	36.00	15.37	2.23
C6	4200.58	34.00	14.53	22.77
C7	52.58	100.00	39.62	18.81
C8	437.78	50.00	43.77	12.00
C9	243.91	50.00	21.43	11.02
C10	1301.24	36.00	136.83	110.00
C11	820.24	30.00	44.78	27.73
C12	022.21	1024.00	25.57	12.77
C13	025.12	1024.00	31.66	25.82
C14	028.28	1024.00	32.66	28.22
C15	029.20	1024.00	33.14	30.00
C16	029.21	1024.00	33.14	30.00
C17	029.21	1024.00	33.14	30.00
C18	029.21	1024.00	33.14	30.00
C19	029.21	1024.00	33.14	30.00
C20	029.21	1024.00	33.14	30.00
C21	029.21	1024.00	33.14	30.00
C22	029.21	1024.00	33.14	30.00
C23	029.21	1024.00	33.14	30.00
C24	029.21	1024.00	33.14	30.00
C25	029.21	1024.00	33.14	30.00
C26	029.21	1024.00	33.14	30.00
C27	029.21	1024.00	33.14	30.00
C28	029.21	1024.00	33.14	30.00
C29	029.21	1024.00	33.14	30.00
C30	029.21	1024.00	33.14	30.00
C31	029.21	1024.00	33.14	30.00
C32	029.21	1024.00	33.14	30.00
C33	029.21	1024.00	33.14	30.00
C34	029.21	1024.00	33.14	30.00
C35	029.21	1024.00	33.14	30.00
C36	029.21	1024.00	33.14	30.00
C37	029.21	1024.00	33.14	30.00
C38	029.21	1024.00	33.14	30.00
C39	029.21	1024.00	33.14	30.00
C40	029.21	1024.00	33.14	30.00
C41	029.21	1024.00	33.14	30.00
C42	029.21	1024.00	33.14	30.00
C43	029.21	1024.00	33.14	30.00
C44	029.21	1024.00	33.14	30.00
C45	029.21	1024.00	33.14	30.00
C46	029.21	1024.00	33.14	30.00
C47	029.21	1024.00	33.14	30.00
C48	029.21	1024.00	33.14	30.00
C49	029.21	1024.00	33.14	30.00
C50	029.21	1024.00	33.14	30.00
C51	029.21	1024.00	33.14	30.00
C52	029.21	1024.00	33.14	30.00
C53	029.21	1024.00	33.14	30.00
C54	029.21	1024.00	33.14	30.00
C55	029.21	1024.00	33.14	30.00
C56	029.21	1024.00	33.14	30.00
C57	029.21	1024.00	33.14	30.00
C58	029.21	1024.00	33.14	30.00
C59	029.21	1024.00	33.14	30.00
C60	029.21	1024.00	33.14	30.00
C61	029.21	1024.00	33.14	30.00
C62	029.21	1024.00	33.14	30.00
C63	029.21	1024.00	33.14	30.00
C64	029.21	1024.00	33.14	30.00
C65	029.21	1024.00	33.14	30.00
C66	029.21	1024.00	33.14	30.00
C67	029.21	1024.00	33.14	30.00
C68	029.21	1024.00	33.14	30.00
C69	029.21	1024.00	33.14	30.00
C70	029.21	1024.00	33.14	30.00

LINE	BEARING	LENGTH
L1	S89°45'45"W	26.46
L2	S89°45'45"W	22.21
L3	N89°45'45"E	48.00
L4	S89°45'45"W	18.80
L5	S01°45'15"E	25.00
L6	S89°45'45"W	1.68
L7	S00°11'50"W	23.92
L8	S89°45'45"W	28.92
L9	N89°45'45"E	20.12
L10	S89°45'45"W	14.82
L11	N89°45'45"E	43.55
L12	S00°11'50"W	11.18
L13	N89°45'45"E	33.68
L14	N77°38'21"E	14.70
L15	N77°38'21"E	8.79
L16	S89°45'45"W	20.97
L17	N89°45'45"E	28.57
L18	S89°45'45"W	20.00
L19	S89°45'45"W	13.97
L20	N89°45'45"E	43.00
L21	S89°45'45"W	4.81
L22	S89°45'45"W	28.58
L23	S89°45'45"W	4.60
L24	S89°45'45"W	27.21
L25	S89°45'45"W	40.00
L26	N89°45'45"E	27.81
L27	N89°45'45"E	30.80
L28	N89°45'45"E	36.72

