

**QUAIL RUN @ ELKHORN SPRINGS
- UNIT 1**

Recorded in Book 95 Page 18 of Plats

200 Scale Map Location: G-16-1

Fire Dept. District Map # 1417:14, 15

MASTER SITE ADDRESS: 7951 N. CIMARRON RD

BLOCK 1	LOT	1	7954	QUAIL TURN ST	N/S	PRIVATE STREET
		2	7958			
		3	7962			
BLOCK 1	LOT	4	8008	QUAIL HEAD AVE	E/W	PRIVATE STREET
		5	8016			
		6	8024			
		7	8032			
		8	8036			
BLOCK 1	LOT	9	7965	QUAIL MOUNTAIN LN	N/S	PRIVATE STREET
		10	7961			
		11	7957			
		12	7953			
		13	7949			
		14	7945			
15	7941					
BLOCK 1	LOT	16	7940	QUAIL BREAST LN	N/S	PRIVATE STREET
		17	7944			
		18	7948			
		19	7952			
		20	7956			
		21	7960			
BLOCK 1	LOT	22	8116	QUAIL NEST AVE	E/W	PRIVATE STREET
		23	B124			
BLOCK 4	LOT	92	7953	QUAIL BREAST LN	N/S	PRIVATE STREET
		93	7949			
		94	7945			
		95	7941			
		96	7937			
		97	7933			
BLOCK 4	LOT	98	8117	HIDDEN QUAIL AVE	E/W	PRIVATE STREET
		99	8113			
BLOCK 5	LOT	100	8105	HIDDEN QUAIL AVE	E/W	PRIVATE STREET
		101	8101			
		102	8041			
		103	8037			
		104	8033			
		105	8029			
		106	8025			
		107	8021			
		108	8017			
		109	8013			
BLOCK 6	LOT	110	7942	QUAIL MOUNTAIN LN	N/S	PRIVATE STREET

**QUAIL RUN @ ELKHORN SPRINGS
- UNIT 1**

BLOCK 6	LOT	111	7950	QUAIL MOUNTAIN LN	N/S	PRIVATE STREET
		112	7954			
		113	7958			
		114	7962			
BLOCK 6	LOT	115	7959	QUAIL SUMMIT LN	N/S	PRIVATE STREET
		116	7955			
		117	7951			
		118	7947			
		119	7943			
Common Area	A	7952		QUAIL SUMMIT LN	N/S	PRIVATE STREET
Common Area	B	7961	N	CIMARRON RD	N/S	PUBLIC STREET
Common Area	C	8021		GRAND TETON DR	E/W	PUBLIC STREET
Common Area	D	8110		QUAIL NEST AVE	E/W	PRIVATE STREET

There are no addresses on QUAIL STREAM STREET, QUAIL TRACK STREET (N/S Private Streets); QUAIL FEATHER AVENUE (E/W Private Street) or JO MARCY DRIVE (E/W Public Street).

ORIGINAL DATE: 6/15/2000

CITY OF LAS VEGAS
PLANNING & DEVELOPMENT DEPARTMENT



DAVID BRATCHER, PLANNER II

**QUAIL RUN @ ELKHORN SPRINGS
- UNIT 1**

Recorded in Book 95 Page 18 of Plats

200 Scale Map Location: G-16-1

Fire Dept. District Map # 1417:14, 15

MASTER SITE ADDRESS: 7951 N. CIMARRON RD

BLOCK 1	LOT	1	7954	QUAIL TURN ST	N/S	PRIVATE STREET
		2	7958			
		3	7962			
BLOCK 1	LOT	4	8008	QUAIL HEAD AVE	E/W	PRIVATE STREET
		5	8016			
		6	8024			
		7	8032			
		8	8036			
BLOCK 1	LOT	9	7965	QUAIL MOUNTAIN LN	N/S	PRIVATE STREET
		10	7961			
		11	7957			
		12	7953			
		13	7949			
		14	7945			
BLOCK 1	LOT	15	7941	QUAIL BREAST LN	N/S	PRIVATE STREET
		16	7940			
		17	7944			
		18	7948			
		19	7952			
		20	7956			
BLOCK 1	LOT	21	7960	QUAIL NEST AVE	E/W	PRIVATE STREET
		22	8116			
BLOCK 1	LOT	23	8124	QUAIL NEST AVE	E/W	PRIVATE STREET
		23	8124			
BLOCK 4	LOT	92	7953	QUAIL BREAST LN	N/S	PRIVATE STREET
		93	7949			
		94	7945			
		95	7941			
		96	7937			
		97	7933			
BLOCK 4	LOT	98	8117	HIDDEN QUAIL AVE	E/W	PRIVATE STREET
		99	8113			
BLOCK 5	LOT	100	8105	HIDDEN QUAIL AVE	E/W	PRIVATE STREET
		101	8101			
		102	8041			
		103	8037			
		104	8033			
		105	8029			
		106	8025			
		107	8021			
		108	8017			
		109	8013			
BLOCK 6	LOT	110	7942	QUAIL MOUNTAIN LN	N/S	PRIVATE STREET

**QUAIL RUN @ ELKHORN SPRINGS
- UNIT 1**

BLOCK 6	LOT	111 7950 112 7954 113 7958 114 7962	QUAIL MOUNTAIN LN	N/S	PRIVATE STREET
BLOCK 6	LOT	115 7959 116 7955 117 7951 118 7947 119 7943	QUAIL SUMMIT LN	N/S	PRIVATE STREET
Common Area	A	7952	QUAIL SUMMIT LN	N/S	PRIVATE STREET
Common Area	B	7961	N CIMARRON RD	N/S	PUBLIC STREET
Common Area	C	8021	GRAND TETON DR	E/W	PUBLIC STREET
Common Area	D	6110	QUAIL NEST AVE	E/W	PRIVATE STREET

There are no addresses on QUAIL STREAM STREET, QUAIL TRACK STREET (N/S Private Streets); QUAIL FEATHER AVENUE (E/W Private Street) or JO MARCY DRIVE (E/W Public Street).

ORIGINAL DATE: 6/15/2000

CITY OF LAS VEGAS
PLANNING & DEVELOPMENT DEPARTMENT



DAVID BRATCHER, PLANNER II

**QUAIL RUN @ ELKHORN SPRINGS
- UNIT 1**

Recorded in Book 95 Page 18 of Plats

200 Scale Map Location: G-16-1

Fire Dept. District Map # 1417:14, 15

MASTER SITE ADDRESS: 7951 N. CIMARRON RD

BLOCK 1	LOT	1	7954	QUAIL TURN ST	N/S	PRIVATE STREET
		2	7958			
		3	7962			
BLOCK 1	LOT	4	8008	QUAIL HEAD AVE	E/W	PRIVATE STREET
		5	8016			
		6	8024			
		7	8032			
		8	8036			
BLOCK 1	LOT	9	7965	QUAIL MOUNTAIN LN	N/S	PRIVATE STREET
		10	7961			
		11	7957			
		12	7953			
		13	7949			
		14	7945			
		15	7941			
BLOCK 1	LOT	16	7940	QUAIL BREAST LN	N/S	PRIVATE STREET
		17	7944			
		18	7948			
		19	7952			
		20	7956			
		21	7960			
BLOCK 1	LOT	22	8116	QUAIL NEST AVE	E/W	PRIVATE STREET
		23	8124			
BLOCK 4	LOT	92	7953	QUAIL BREAST LN	N/S	PRIVATE STREET
		93	7949			
		94	7945			
		95	7941			
		96	7937			
		97	7933			
BLOCK 4	LOT	98	8117	HIDDEN QUAIL AVE	E/W	PRIVATE STREET
		99	8113			
BLOCK 5	LOT	100	8105	HIDDEN QUAIL AVE	E/W	PRIVATE STREET
		101	8101			
		102	8041			
		103	8037			
		104	8033			
		105	8029			
		106	8025			
		107	8021			
		108	8017			
		109	8013			
BLOCK 6	LOT	110	7942	QUAIL MOUNTAIN LN	N/S	PRIVATE STREET

**QUAIL RUN @ ELKHORN SPRINGS
- UNIT 1**

BLOCK 6	LOT	111	7950	QUAIL MOUNTAIN LN	N/S	PRIVATE STREET
		112	7954			
		113	7958			
		114	7982			
BLOCK 6	LOT	115	7959	QUAIL SUMMIT LN	N/S	PRIVATE STREET
		116	7955			
		117	7951			
		118	7947			
		119	7943			
Common Area	A		7952	QUAIL SUMMIT LN	N/S	PRIVATE STREET
Common Area	B		7961	N CIMARRON RD	N/S	PUBLIC STREET
Common Area	C		8021	GRAND TETON DR	E/W	PUBLIC STREET
Common Area	D		8110	QUAIL NEST AVE	E/W	PRIVATE STREET

There are no addresses on QUAIL STREAM STREET, QUAIL TRACK STREET (N/S Private Streets); QUAIL FEATHER AVENUE (E/W Private Street) or JO MARCY DRIVE (E/W Public Street).

ORIGINAL DATE: 6/15/2000

CITY OF LAS VEGAS
PLANNING & DEVELOPMENT DEPARTMENT

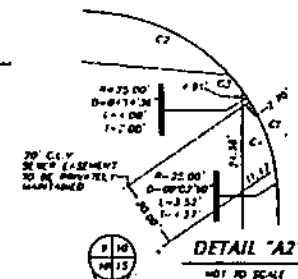


DAVID BRATCHER, PLANNER II

TOTAL AREA: 15.17 Acres
TOTAL LOTS: 57

FINAL MAP OF QUAIL RUN @ ELKHORN SPRINGS - UNIT 1

A COMMON INTEREST COMMUNITY
A PORTION OF THE NORTH HALF IN 1/2 OF THE NORTHEAST QUARTER IN 1/4
OF SECTION 16, TOWNSHIP 19 SOUTH, RANGE 60 EAST, MERIDIAN
CITY OF LAS VEGAS, CLARK COUNTY, NEVADA



CURVE TABLE

SURV. RANGE	STATION	CHORD	ANGLE
CE-1	0+00	84.12	28.32
CE-1	1+00	84.12	28.32
CE-1	2+00	84.12	28.32
CE-1	3+00	84.12	28.32
CE-1	4+00	84.12	28.32
CE-1	5+00	84.12	28.32
CE-1	6+00	84.12	28.32
CE-1	7+00	84.12	28.32
CE-1	8+00	84.12	28.32
CE-1	9+00	84.12	28.32
CE-1	10+00	84.12	28.32
CE-1	11+00	84.12	28.32
CE-1	12+00	84.12	28.32
CE-1	13+00	84.12	28.32
CE-1	14+00	84.12	28.32
CE-1	15+00	84.12	28.32
CE-1	16+00	84.12	28.32
CE-1	17+00	84.12	28.32
CE-1	18+00	84.12	28.32
CE-1	19+00	84.12	28.32
CE-1	20+00	84.12	28.32
CE-1	21+00	84.12	28.32
CE-1	22+00	84.12	28.32
CE-1	23+00	84.12	28.32
CE-1	24+00	84.12	28.32
CE-1	25+00	84.12	28.32
CE-1	26+00	84.12	28.32
CE-1	27+00	84.12	28.32
CE-1	28+00	84.12	28.32
CE-1	29+00	84.12	28.32
CE-1	30+00	84.12	28.32
CE-1	31+00	84.12	28.32
CE-1	32+00	84.12	28.32
CE-1	33+00	84.12	28.32
CE-1	34+00	84.12	28.32
CE-1	35+00	84.12	28.32
CE-1	36+00	84.12	28.32
CE-1	37+00	84.12	28.32
CE-1	38+00	84.12	28.32
CE-1	39+00	84.12	28.32
CE-1	40+00	84.12	28.32
CE-1	41+00	84.12	28.32
CE-1	42+00	84.12	28.32
CE-1	43+00	84.12	28.32
CE-1	44+00	84.12	28.32
CE-1	45+00	84.12	28.32
CE-1	46+00	84.12	28.32
CE-1	47+00	84.12	28.32
CE-1	48+00	84.12	28.32
CE-1	49+00	84.12	28.32
CE-1	50+00	84.12	28.32
CE-1	51+00	84.12	28.32
CE-1	52+00	84.12	28.32
CE-1	53+00	84.12	28.32
CE-1	54+00	84.12	28.32
CE-1	55+00	84.12	28.32
CE-1	56+00	84.12	28.32
CE-1	57+00	84.12	28.32

RADIAL LINE TABLE

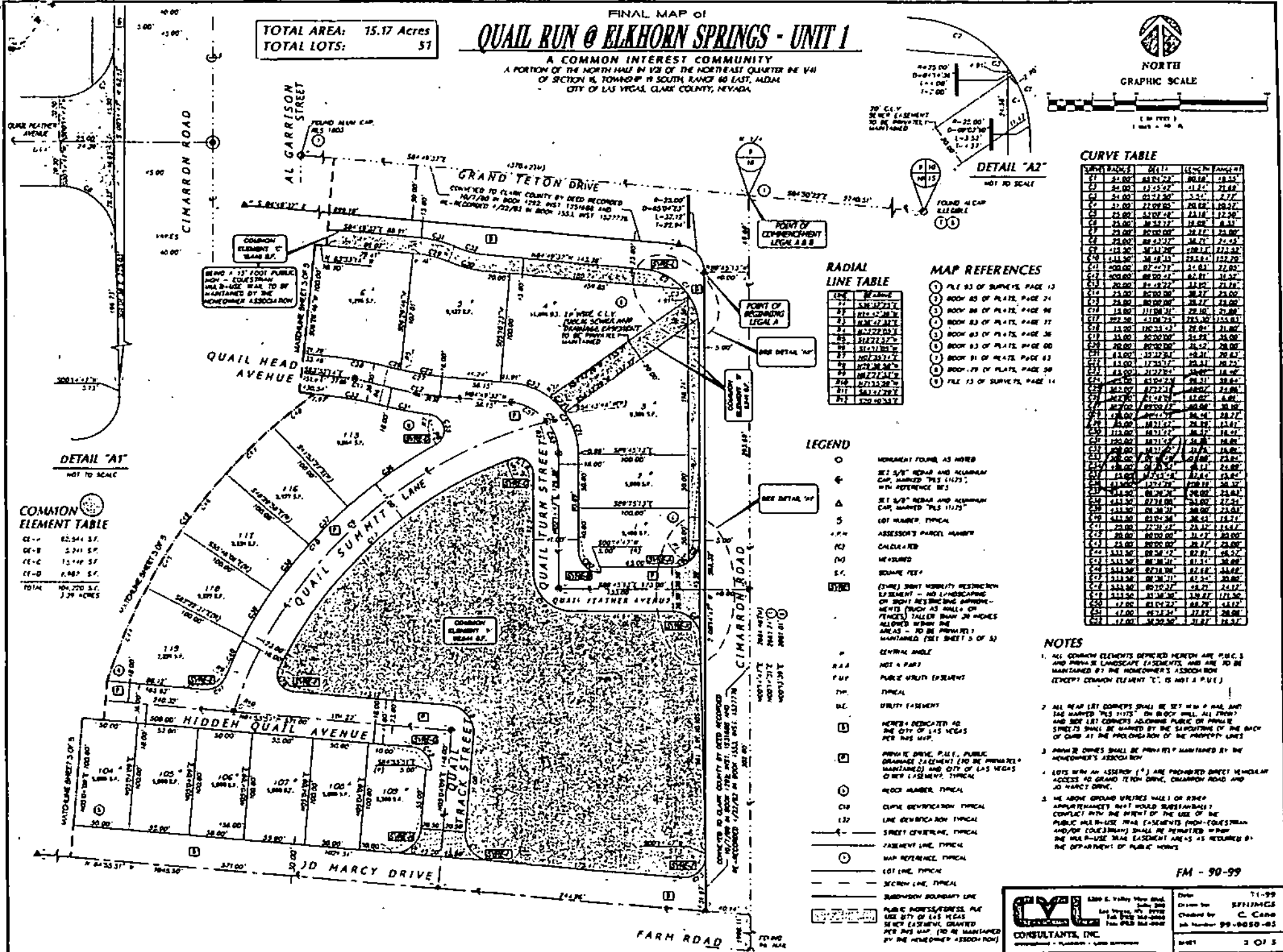
LINE	BEARING
1	S 89° 52' 27" W
2	N 89° 52' 27" E
3	N 89° 52' 27" E
4	S 89° 52' 27" W
5	S 89° 52' 27" W
6	S 89° 52' 27" W
7	S 89° 52' 27" W
8	S 89° 52' 27" W
9	S 89° 52' 27" W
10	S 89° 52' 27" W
11	S 89° 52' 27" W
12	S 89° 52' 27" W

- MAP REFERENCES**
- 1 FILE 83 OF SURVEYS, PAGE 13
 - 2 BOOK 80 OF PLATS, PAGE 24
 - 3 BOOK 86 OF PLATS, PAGE 98
 - 4 BOOK 83 OF PLATS, PAGE 77
 - 5 BOOK 83 OF PLATS, PAGE 26
 - 6 BOOK 83 OF PLATS, PAGE 60
 - 7 BOOK 91 OF PLATS, PAGE 63
 - 8 BOOK 79 OF PLATS, PAGE 14
 - 9 FILE 13 OF SURVEYS, PAGE 14

- LEGEND**
- MONUMENT FOUND AS NOTED
 - ⊕ SET 3/4" REBAR AND NEWMARK CAP, MARKED "PLS 11273" WITH REFERENCE BE'S
 - △ SET 3/4" REBAR AND NEWMARK CAP, MARKED "PLS 11273"
 - 5 LOT NUMBER, TYPICAL
 - APN ASSESSOR'S PARCEL NUMBER
 - CLC CALCULATED
 - M-MOUNTED
 - S.F. SQUARE FEET
 - (LINE) RIGHT MOBILITY RESTRICTION EASEMENT - NO LANDSCAPING OR SOFT RESTRICTION APPROVEMENTS SUCH AS WALLS OR FENCES TALLER THAN 36 INCHES ALLOWED WITHIN THE AREAS - TO BE PRIVATELY MAINTAINED (SEE SHEET 5 OF 5)
 - ∠ CENTRAL ANGLE
 - 2-2-2 NOT A PART
 - PUP PUBLIC UTILITY EASEMENT
 - TH TYPICAL
 - DE UTILITY EASEMENT
 - PRIVATE DRIVE, P.U.E., PUBLIC GRASSMAD EASEMENT (TO BE PRIVATELY MAINTAINED) AND CITY OF LAS VEGAS OR NEW EASEMENT, TYPICAL
 - HOOD NUMBER, TYPICAL
 - CLM CLIMATE IDENTIFICATION TYPICAL
 - CLS CLIMATE IDENTIFICATION TYPICAL
 - STREET CENTERLINE, TYPICAL
 - EASEMENT LINE, TYPICAL
 - MAP REFERENCE, TYPICAL
 - LOT LINE, TYPICAL
 - SECTION LINE, TYPICAL
 - SUBDIVISION BOUNDARY LINE
 - PUBLIC HIGHWAY/STREET, PER USE CITY OF LAS VEGAS STREET EASEMENT, GRANTED PER THIS MAP (TO BE MAINTAINED BY THE HOMEOWNER ASSOCIATION)

COMMON ELEMENT TABLE

CE-1	CE-2	CE-3	CE-4	TOTAL
82,544 S.F.	2,341 S.F.	12,149 S.F.	2,087 S.F.	104,700 S.F.
				2.39 ACRES



- NOTES**
- ALL COMMON ELEMENTS DEFINED HEREIN ARE PUBLIC AND PRIVATE LANDSCAPE EASEMENTS AND ARE TO BE MAINTAINED BY THE HOMEOWNER'S ASSOCIATION (EXCEPT COMMON ELEMENT "C" IS NOT A P.U.E.)
 - ALL REAR LOT CORNERS SHALL BE SET WITH A PINE AND 1/4" HARDWOOD PLS 11273 AND SET WITH A PINE AND 1/4" HARDWOOD PLS 11273. THE CITY OF LAS VEGAS SHALL BE MARKED BY THE SURVEYING OF THE CITY OF LAS VEGAS AT THE PROCEEDING OF THE PROPERTY LINES.
 - PRIVATE DRIVES SHALL BE PRIVATELY MAINTAINED BY THE HOMEOWNER'S ASSOCIATION.
 - LOTS WITH AN ABBREVIATION (*) ARE PROHIBITED DIRECT VEHICULAR ACCESS TO GRAND TETON DRIVE, CIMARRON ROAD AND JO MARCY DRIVE.
 - WE ABOUND GROUND UTILITIES (WALLS) OR OTHER APPROPRIATEMENTS THAT WOULD INTERFERE OR CONFLICT WITH THE SUBJECT OF THE USE OF THE PUBLIC USE-TRADE EASEMENTS FROM COMMON AND/OR (COLLECTIVE) SHALL BE PERMITTED WITHIN THE PUBLIC USE-TRADE EASEMENT AREAS AS REQUIRED BY THE DEPARTMENT OF PUBLIC WORKS.

CVL CONSULTANTS, INC.
1300 E. Valley View Blvd., Suite 200, Las Vegas, NV 89102
Tel: 702.734.2000 Fax: 702.734.2000

Drawn by: S. HANCOCK
Checked by: C. CARO
Job Number: 99-0050-05
Date: 11-99
Sheet: 2 OF 5

