

PINE MEADOWS 1 UNIT 8

Recorded in Book 84 Page 35 of Plats

200 Scale Map Location: G-17-2

Fire Dept. District Map # 1416:17

MASTER SITE ADDRESS: 7907 QUICK PINE ST

BLOCK 4	LOT	105	7900	QUICK PINE ST	N/S	PUBLIC STREET
		106	7904			
		107	7908			
		108	7912			
		109	7916			
		110	7920			
		111	7924			
		112	7928			
BLOCK 5	LOT	179	8632	GRAND PINE AVE	E/W	PUBLIC STREET
		180	8628			
		181	8624			
		182	8620			
		183	8616			
		184	8612			
		185	8608			
		186	8604			
187	8600					
BLOCK 6	LOT	188	8601	GRAND PINE AVE	E/W	PUBLIC STREET
		189	8605			
		190	8609			
		191	8613			
		192	8617			
		193	8621			
		194	8625			
		195	8629			
196	8633					

Street with no addresses: HIDDEN PINES AVEUE (E/W)

ORIGINAL DATE: 5/08/1998

**CITY OF LAS VEGAS
PLANNING & DEVELOPMENT DEPARTMENT**


JOHN B HERBERT, PLANNER I

PINE MEADOWS 1 UNIT 8

Recorded in Book 84 Page 35 of Plats

200 Scale Map Location: G-17-2

Fire Dept. District Map # 1416:17

MASTER SITE ADDRESS: 7907 QUICK PINE ST

BLOCK 4	LOT	105	7900	QUICK PINE ST	N/S	PUBLIC STREET
		106	7904			
		107	7908			
		108	7912			
		109	7916			
		110	7920			
		111	7924			
		112	7928			
BLOCK 5	LOT	179	8632	GRAND PINE AVE	E/W	PUBLIC STREET
		180	8628			
		181	8624			
		182	8620			
		183	8616			
		184	8612			
		185	8608			
		186	8604			
187	8600					
BLOCK 6	LOT	188	8601	GRAND PINE AVE	E/W	PUBLIC STREET
		189	8605			
		190	8609			
		191	8613			
		192	8617			
		193	8621			
		194	8625			
		195	8629			
196	8633					

Street with no addresses: HIDDEN PINES AVEUE (E/W)

ORIGINAL DATE: 5/08/1998

**CITY OF LAS VEGAS
PLANNING & DEVELOPMENT DEPARTMENT**


JOHN B HERBERT, PLANNER I

PINE MEADOWS 1 UNIT 8

Recorded in Book 84 Page 35 of Plats

200 Scale Map Location: G-17-2

Fire Dept. District Map # 1416:17

MASTER SITE ADDRESS: 7907 QUICK PINE ST

BLOCK 4	LOT	105	7900	QUICK PINE ST	N/S	PUBLIC STREET
		106	7904			
		107	7908			
		108	7912			
		109	7916			
		110	7920			
		111	7924			
		112	7928			
BLOCK 5	LOT	179	8632	GRAND PINE AVE	E/W	PUBLIC STREET
		180	8628			
		181	8624			
		182	8620			
		183	8616			
		184	8612			
		185	8608			
		186	8604			
		187	8600			
BLOCK 6	LOT	188	8601	GRAND PINE AVE	E/W	PUBLIC STREET
		189	8605			
		190	8609			
		191	8613			
		192	8617			
		193	8621			
		194	8625			
		195	8629			
		196	8633			

Street with no addresses: HIDDEN PINES AVEUE (E/W)

ORIGINAL DATE: 5/08/1998

CITY OF LAS VEGAS
PLANNING & DEVELOPMENT DEPARTMENT



JOHN B HERBERT, PLANNER I

PINE MEADOWS 1 UNIT 8

Recorded in Book 84 Page 35 of Plats

200 Scale Map Location: G-17-2

Fire Dept. District Map # 1416:17

MASTER SITE ADDRESS: 7907 QUICK PINE ST

BLOCK 4	LOT	105	7900	QUICK PINE ST	N/S	PUBLIC STREET
		106	7904			
		107	7908			
		108	7912			
		109	7916			
		110	7920			
		111	7924			
		112	7928			
BLOCK 5	LOT	179	8632	GRAND PINE AVE	E/W	PUBLIC STREET
		180	8628			
		181	8624			
		182	8620			
		183	8616			
		184	8612			
		185	8608			
		186	8604			
		187	8600			
BLOCK 6	LOT	188	8601	GRAND PINE AVE	E/W	PUBLIC STREET
		189	8605			
		190	8609			
		191	8613			
		192	8617			
		193	8621			
		194	8625			
		195	8629			
		196	8633			

Street with no addresses: HIDDEN PINES AVEUE (E/W)

ORIGINAL DATE: 5/08/1998

**CITY OF LAS VEGAS
PLANNING & DEVELOPMENT DEPARTMENT**


JOHN B HERBERT, PLANNER I

980508

FILE COPY - DO NOT REMOVE -

00611

FINAL MAP OF PINE MEADOWS I - UNIT 8

A COMMON INTEREST COMMUNITY

A PORTION OF THE NORTH HALF (N 1/2) OF SECTION 17, TOWNSHIP 19 SOUTH, RANGE 60 EAST, M.D.M., CITY OF LAS VEGAS, CLARK COUNTY, NEVADA

LINE TABLE

No.	BEARING	DISTANCE
L1	N48°21'11"W	26.08'
L2	S00°13'53"W	2.14'
L3	N89°58'26"W	4.62'
L4	S89°58'30"E	4.61'
L5	N46°03'16"W	27.20'
L6	N00°13'53"E	3.87'
L7	N44°00'50"E	27.33'
L8	S00°13'53"W	4.71'
L9	S89°58'30"E	3.86'
L10	S00°13'53"W	30.82'
L11	S89°58'30"E	0.81'

CURVE TABLE

No.	RADIUS	DELTA	LENGTH	TANGENT
C1	15.00'	89°49'40"	23.52'	14.96'
C2	15.00'	90°10'20"	23.61'	15.05'
C3	15.00'	89°47'57"	23.51'	14.95'
C4	15.00'	90°12'23"	23.62'	15.05'

NOTES

ACREAGE: 3.45 ACRES ±

TOTAL LOTS: 26

NOTE:

ALL REAR CORNERS SHALL BE SET WITH A NAIL AND TAG P.L.S. 11179 ON BLOCK WALLS AND ALL FRONT OR SIDE CORNERS ADJOINING PUBLIC RIGHT OF WAY SHALL BE MARKED BY THE SAWCUTTING OF THE BACK OF CURBS ON THE PROLONGATION OF PROPERTY LINES.

REFERENCES

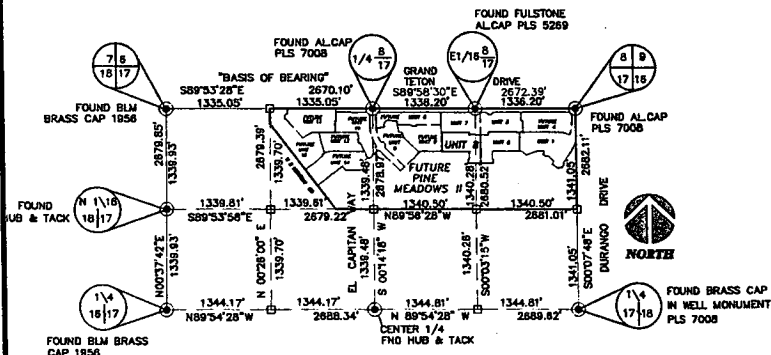
- THE OFFICIAL BLM PLAT OF SECTION 17
- THE SUPPLEMENTAL PLAT OF SECTION 17
- RECORD OF SURVEY - FILE 73, PAGE 14
- RECORD OF SURVEY - FILE 55, PAGE 04
- FINAL MAP - BOOK 60, PAGE 72
- N.D.O.T. RIGHT-OF-WAY PLANS PARCEL No. PREFIX: U-095-CL-
- FINAL MAP - BOOK 87, PAGE 93
- FINAL MAP - BOOK 81, PAGE 99
- FINAL MAP - BOOK 81, PAGE 85

LEGEND

- FOUND POINT AS NOTED
- CALCULATED POSITION

LEGEND

- BOUNDARY LINE
- CENTERLINE
- SET TYPE III MONUMENT W/ 4 TIES PLS # 11175
- FOUND POINT AS NOTED
- RADIAL BEARING
- LOT NUMBER
- CURVE NUMBER
- LINE NUMBER
- SQUARE FEET
- P.O.B. POINT OF BEGINNING
- P.O.C. POINT OF COMMENCEMENT
- S.V.R.E. SIGHT VISIBILITY RESTRICTION EASEMENT TO BE PRIVATELY MAINTAINED (NO LANDSCAPING OR SIGHT RESTRICTING IMPROVEMENTS TALLER THAN 30 INCHES ALLOWED WITHIN SHADED PORTION OF SIGHT VISIBILITY RESTRICTION EASEMENT.)
- BLOCK NUMBER
- HEREBY DEDICATED TO THE CITY OF LAS VEGAS PER THIS FINAL MAP.



SURVEY ANALYSIS

SECTION 17, T. 19 S., R. 60 E., M.D.M. N.T.S.

NOT A PART PINE MEADOWS I - UNIT 7 BOOK 94, PAGE 001

NOT A PART FUTURE PINE MEADOWS I UNITS

NOT A PART FUTURE PINE MEADOWS II UNITS

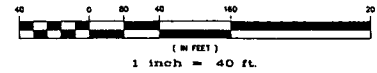
NOT A PART FUTURE PINE MEADOWS II UNITS

NOT A PART PINE MEADOWS I - UNIT 7 BOOK 84, PAGE 001

NOT A PART FUTURE PINE MEADOWS II UNITS



GRAPHIC SCALE



FINAL MAP OF PINE MEADOWS - UNIT 8 A COMMON INTEREST COMMUNITY A PORTION OF THE NORTH HALF (N 1/2) OF SECTION 17, TOWNSHIP 19 SOUTH, RANGE 60 EAST, M.D.M. CITY OF LAS VEGAS, CLARK COUNTY, NEVADA.

CML CONSULTANTS, INC.
405 Cameron Street Suite A Las Vegas, NV 89102 Tel: (702) 388-0008 Fax: (702) 388-0047

Date: 1-14-98
Drawn by: F. Zwolinski
Checked by: C. Cano
Job Number: 97-9029-01

3 SHEET 2 OF 2