

ELKHORN - CIMARRON ESTATES UNIT 4-A

Recorded in Book 82 Page 30 of Plats

200 Scale Map Location: G-21-4

Fire Dept. District Map # 15617:55,56

MASTER SITE ADDRESS: 7902 DEER SPRINGS WAY

BLOCK H	LOT	185	7948	MENELAUS AVE	E/W	PUBLIC STREET
		186	7944			
		187	7940			
		188	7936			
		189	7932			
		190	7928			
		191	7924			
		192	7920			
		225	7812			
BLOCK J	LOT	125	6816	RHEA ST	N/S	PUBLIC STREET
		126	6812			
		127	6808			
		128	6804			
		129	6800			
		130	6801			
		131	6805			
		132	6809			
		133	6813			
		134	6817			
BLOCK J	LOT	135	6816	URANIA CT	N/S	PUBLIC STREET
		136	6812			
		137	6808			
		138	6804			
		139	6800			
		140	6801			
		141	6805			
		142	6809			
		143	6813			
		144	6817			
BLOCK J	LOT	145	6816	TARTARUS ST	N/S	PUBLIC STREET
		146	6812			
		147	6808			
		148	6804			
		149	6800			
		150	6801			
		151	6805			
		152	6809			
		153	6813			
		154	6817			
BLOCK J	LOT	155	6816	ANTEUS CT	N/S	PUBLIC STREET
		156	6812			
		157	6808			
		158	6804			
		159	6800			
		160	6801			

ELKHORN - CIMARRON ESTATES UNIT 4-A

BLOCK J	LOT	161	6805	ANTEUS CT	N/S	PUBLIC STREET
		162	6809			
		163	6813			
		164	6817			
BLOCK K	LOT	165	7912	MENELAUS AVE	E/W	PUBLIC STREET
		166	7908			
		167	7904			
		168	7900			
		169	7840			
		170	7836			
		171	7832			
		172	7828			
		173	7824			
		174	7820			
Common Area	G	6830	N	CIMARRON RD	N/S	PUBLIC STREET
Common Area	H	7930		DEER SPRINGS WAY	N/S	PUBLIC STREET
	I	7910				
	J	7838				
	K	7818				

ORIGINAL DATE: 12/03/1997

**CITY OF LAS VEGAS
PLANNING & DEVELOPMENT DEPARTMENT**


JOHN E. HERBERT, PLANNER I

4/11/2015

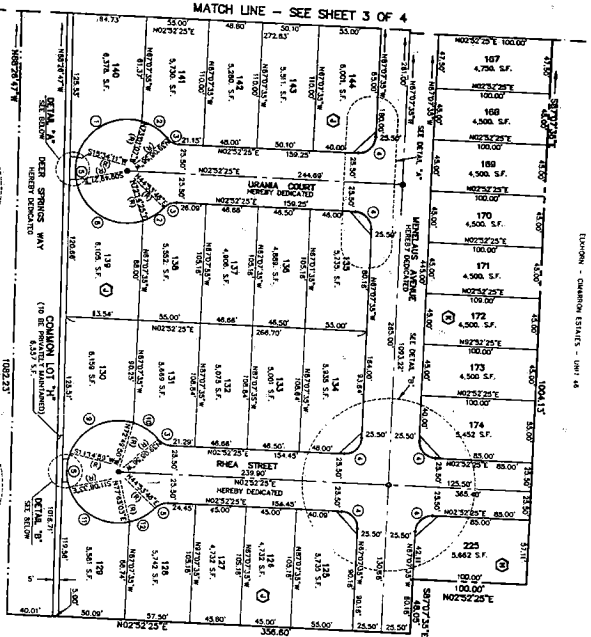
4/16 Copy

17/11/2015

ELKHORN - CIMARRON ESTATES - UNIT 4-A

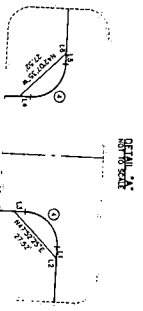
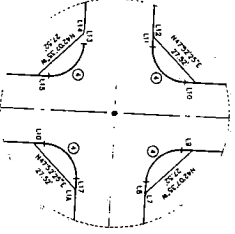
A PORTION OF THE SOUTHWEST QUARTER (SW 1/4) OF THE NORTHEAST QUARTER (NE 1/4) OF SECTION 21, TOWNSHIP 19 SOUTH, RANGE 60 EAST, N.M.D.M., CITY OF LAS VEGAS, CLARK COUNTY, NEVADA
A COMMON INTEREST COMMUNITY

LOTION - CIMARRON ESTATES - UNIT 4-A



ELKHORN - CIMARRON ESTATES - UNIT 4-A

SECTION 21



46) FROM COMPARISON AS SHOWN AND DETECTED SET BY REAR AND LATERAL CURVE REFERENCE, SUBSTANCES IN TOP OF CURVE (UNLESS OTHERWISE NOTED)

47) ENTER NEAR POINT OF INTERSECTION

48) SET NUMBER IS SUBSTANCES = 19

49) FLOOR NUMBER

50) CURVE NUMBER

51) SUBSTANCES BOUNDARY LINE

52) SUBSTANCES FENCE

53) PROPERTY LINE

54) TYPED FROM MEASURED DISTANCE (STANDARD) AND CORRECTING FOR SHORT OR LONG MEASUREMENTS (STANDARD) AND LISTED AS MEASURED DISTANCE (STANDARD) IN THE FOLLOWING MANNER (S)

LINE	DIRECTION	DISTANCE
1	N 17° 15' 00" W	1.17
2	N 17° 15' 00" W	1.17
3	N 17° 15' 00" W	1.17
4	N 17° 15' 00" W	1.17
5	N 17° 15' 00" W	1.17
6	N 17° 15' 00" W	1.17
7	N 17° 15' 00" W	1.17
8	N 17° 15' 00" W	1.17
9	N 17° 15' 00" W	1.17
10	N 17° 15' 00" W	1.17
11	N 17° 15' 00" W	1.17
12	N 17° 15' 00" W	1.17
13	N 17° 15' 00" W	1.17
14	N 17° 15' 00" W	1.17
15	N 17° 15' 00" W	1.17
16	N 17° 15' 00" W	1.17
17	N 17° 15' 00" W	1.17
18	N 17° 15' 00" W	1.17
19	N 17° 15' 00" W	1.17
20	N 17° 15' 00" W	1.17
21	N 17° 15' 00" W	1.17
22	N 17° 15' 00" W	1.17
23	N 17° 15' 00" W	1.17
24	N 17° 15' 00" W	1.17
25	N 17° 15' 00" W	1.17
26	N 17° 15' 00" W	1.17
27	N 17° 15' 00" W	1.17
28	N 17° 15' 00" W	1.17
29	N 17° 15' 00" W	1.17
30	N 17° 15' 00" W	1.17
31	N 17° 15' 00" W	1.17
32	N 17° 15' 00" W	1.17
33	N 17° 15' 00" W	1.17
34	N 17° 15' 00" W	1.17
35	N 17° 15' 00" W	1.17
36	N 17° 15' 00" W	1.17
37	N 17° 15' 00" W	1.17
38	N 17° 15' 00" W	1.17
39	N 17° 15' 00" W	1.17
40	N 17° 15' 00" W	1.17
41	N 17° 15' 00" W	1.17
42	N 17° 15' 00" W	1.17
43	N 17° 15' 00" W	1.17
44	N 17° 15' 00" W	1.17
45	N 17° 15' 00" W	1.17
46	N 17° 15' 00" W	1.17
47	N 17° 15' 00" W	1.17
48	N 17° 15' 00" W	1.17
49	N 17° 15' 00" W	1.17
50	N 17° 15' 00" W	1.17
51	N 17° 15' 00" W	1.17
52	N 17° 15' 00" W	1.17
53	N 17° 15' 00" W	1.17
54	N 17° 15' 00" W	1.17
55	N 17° 15' 00" W	1.17
56	N 17° 15' 00" W	1.17
57	N 17° 15' 00" W	1.17
58	N 17° 15' 00" W	1.17
59	N 17° 15' 00" W	1.17
60	N 17° 15' 00" W	1.17
61	N 17° 15' 00" W	1.17
62	N 17° 15' 00" W	1.17
63	N 17° 15' 00" W	1.17
64	N 17° 15' 00" W	1.17
65	N 17° 15' 00" W	1.17
66	N 17° 15' 00" W	1.17
67	N 17° 15' 00" W	1.17
68	N 17° 15' 00" W	1.17
69	N 17° 15' 00" W	1.17
70	N 17° 15' 00" W	1.17
71	N 17° 15' 00" W	1.17
72	N 17° 15' 00" W	1.17
73	N 17° 15' 00" W	1.17
74	N 17° 15' 00" W	1.17
75	N 17° 15' 00" W	1.17
76	N 17° 15' 00" W	1.17
77	N 17° 15' 00" W	1.17
78	N 17° 15' 00" W	1.17
79	N 17° 15' 00" W	1.17
80	N 17° 15' 00" W	1.17
81	N 17° 15' 00" W	1.17
82	N 17° 15' 00" W	1.17
83	N 17° 15' 00" W	1.17
84	N 17° 15' 00" W	1.17
85	N 17° 15' 00" W	1.17
86	N 17° 15' 00" W	1.17
87	N 17° 15' 00" W	1.17
88	N 17° 15' 00" W	1.17
89	N 17° 15' 00" W	1.17
90	N 17° 15' 00" W	1.17
91	N 17° 15' 00" W	1.17
92	N 17° 15' 00" W	1.17
93	N 17° 15' 00" W	1.17
94	N 17° 15' 00" W	1.17
95	N 17° 15' 00" W	1.17
96	N 17° 15' 00" W	1.17
97	N 17° 15' 00" W	1.17
98	N 17° 15' 00" W	1.17
99	N 17° 15' 00" W	1.17
100	N 17° 15' 00" W	1.17

CURVE	DELTA	RADIUS	LENGTH	TANGENT
1	171.875	100.000	100.000	100.000
2	171.875	100.000	100.000	100.000
3	171.875	100.000	100.000	100.000
4	171.875	100.000	100.000	100.000
5	171.875	100.000	100.000	100.000
6	171.875	100.000	100.000	100.000
7	171.875	100.000	100.000	100.000
8	171.875	100.000	100.000	100.000
9	171.875	100.000	100.000	100.000
10	171.875	100.000	100.000	100.000
11	171.875	100.000	100.000	100.000
12	171.875	100.000	100.000	100.000
13	171.875	100.000	100.000	100.000
14	171.875	100.000	100.000	100.000
15	171.875	100.000	100.000	100.000
16	171.875	100.000	100.000	100.000
17	171.875	100.000	100.000	100.000
18	171.875	100.000	100.000	100.000
19	171.875	100.000	100.000	100.000
20	171.875	100.000	100.000	100.000
21	171.875	100.000	100.000	100.000
22	171.875	100.000	100.000	100.000
23	171.875	100.000	100.000	100.000
24	171.875	100.000	100.000	100.000
25	171.875	100.000	100.000	100.000
26	171.875	100.000	100.000	100.000
27	171.875	100.000	100.000	100.000
28	171.875	100.000	100.000	100.000
29	171.875	100.000	100.000	100.000
30	171.875	100.000	100.000	100.000
31	171.875	100.000	100.000	100.000
32	171.875	100.000	100.000	100.000
33	171.875	100.000	100.000	100.000
34	171.875	100.000	100.000	100.000
35	171.875	100.000	100.000	100.000
36	171.875	100.000	100.000	100.000
37	171.875	100.000	100.000	100.000
38	171.875	100.000	100.000	100.000
39	171.875	100.000	100.000	100.000
40	171.875	100.000	100.000	100.000
41	171.875	100.000	100.000	100.000
42	171.875	100.000	100.000	100.000
43	171.875	100.000	100.000	100.000
44	171.875	100.000	100.000	100.000
45	171.875	100.000	100.000	100.000
46	171.875	100.000	100.000	100.000
47	171.875	100.000	100.000	100.000
48	171.875	100.000	100.000	100.000
49	171.875	100.000	100.000	100.000
50	171.875	100.000	100.000	100.000
51	171.875	100.000	100.000	100.000
52	171.875	100.000	100.000	100.000
53	171.875	100.000	100.000	100.000
54	171.875	100.000	100.000	100.000
55	171.875	100.000	100.000	100.000
56	171.875	100.000	100.000	100.000
57	171.875	100.000	100.000	100.000
58	171.875	100.000	100.000	100.000
59	171.875	100.000	100.000	100.000
60	171.875	100.000	100.000	100.000
61	171.875	100.000	100.000	100.000
62	171.875	100.000	100.000	100.000
63	171.875	100.000	100.000	100.000
64	171.875	100.000	100.000	100.000
65	171.875	100.000	100.000	100.000
66	171.875	100.000	100.000	100.000
67	171.875	100.000	100.000	100.000
68	171.875	100.000	100.000	100.000
69	171.875	100.000	100.000	100.000
70	171.875	100.000	100.000	100.000
71	171.875	100.000	100.000	100.000
72	171.875	100.000	100.000	100.000
73	171.875	100.000	100.000	100.000
74	171.875	100.000	100.000	100.000
75	171.875	100.000	100.000	100.000
76	171.875	100.000	100.000	100.000
77	171.875	100.000	100.000	100.000
78	171.875	100.000	100.000	100.000
79	171.875	100.000	100.000	100.000
80	171.875	100.000	100.000	100.000
81	171.875	100.000	100.000	100.000
82	171.875	100.000	100.000	100.000
83	171.875	100.000	100.000	100.000
84	171.875	100.000	100.000	100.000
85	171.875	100.000	100.000	100.000
86	171.875	100.000	100.000	100.000
87	171.875	100.000	100.000	100.000
88	171.875	100.000	100.000	100.000
89	171.875	100.000	100.000	100.000
90	171.875	100.000	100.000	100.000
91	171.875	100.000	100.000	100.000
92	171.875	100.000	100.000	100.000
93	171.875	100.000	100.000	100.000
94	171.875	100.000	100.000	100.000
95	171.875	100.000	100.000	100.000
96	171.875	100.000	100.000	100.000
97	171.875	100.000	100.000	100.000
98	171.875	100.000	100.000	100.000
99	171.875	100.000	100.000	100.000
100	171.875	100.000	100.000	100.000

NOTES:

1. FROM INTEREST COMMUNITY SHALL BE SET FROM A, B, C, D, E, AND F, AND G, AND H, AND I, AND J, AND K, AND L, AND M, AND N, AND O, AND P, AND Q, AND R, AND S, AND T, AND U, AND V, AND W, AND X, AND Y, AND Z, AND AA, AND AB, AND AC, AND AD, AND AE, AND AF, AND AG, AND AH, AND AI, AND AJ, AND AK, AND AL, AND AM, AND AN, AND AO, AND AP, AND AQ, AND AR, AND AS, AND AT, AND AU, AND AV, AND AW, AND AX, AND AY, AND AZ, AND BA, AND BB, AND BC, AND BD, AND BE, AND BF, AND BG, AND BH, AND BI, AND BJ, AND BK, AND BL, AND BM, AND BN, AND BO, AND BP, AND BQ, AND BR, AND BS, AND BT, AND BU, AND BV, AND BW, AND BX, AND BY, AND BZ, AND CA, AND CB, AND CC, AND CD, AND CE, AND CF, AND CG, AND CH, AND CI, AND CJ, AND CK, AND CL, AND CM, AND CN, AND CO, AND CP, AND CQ, AND CR, AND CS, AND CT, AND CU, AND CV, AND CW, AND CX, AND CY, AND CZ, AND DA, AND DB, AND DC, AND DD, AND DE, AND DF, AND DG, AND DH, AND DI, AND DJ, AND DK, AND DL, AND DM, AND DN, AND DO, AND DP, AND DQ, AND DR, AND DS, AND DT, AND DU, AND DV, AND DW, AND DX, AND DY, AND DZ, AND EA, AND EB, AND EC, AND ED, AND EE, AND EF, AND EG, AND EH, AND EI, AND EJ, AND EK, AND EL, AND EM, AND EN, AND EO, AND EP, AND EQ, AND ER, AND ES, AND ET, AND EU, AND EV, AND EW, AND EX, AND EY, AND EZ, AND FA, AND FB, AND FC, AND FD, AND FE, AND FF, AND FG, AND FH, AND FI, AND FJ, AND FK, AND FL, AND FM, AND FN, AND FO, AND FP, AND FQ, AND FR, AND FS, AND FT, AND FU, AND FV, AND FW, AND FX, AND FY, AND FZ, AND GA, AND GB, AND GC, AND GD, AND GE, AND GF, AND GG, AND GH, AND GI, AND G