

SALINAS II UNIT 1

Recorded in Book 64 Page 18 of Plats, 9/30/94

Fire Dept. District Map #2217::77

200 Scale Location Map: 1-21-6

MASTER SUBDIVISION ADDRESS: 7802 CIELO VISTA AVENUE

| | | | | | | |
|---------|-----|----|------|-----------------------|-----|---------------|
| BLOCK 1 | LOT | 1 | 7829 | FORT RUBY PLACE | E/W | PRIVATE DRIVE |
| | | 2 | 7833 | | | |
| BLOCK 1 | LOT | 51 | 7804 | SILVER PLATEAU AVENUE | E/W | PRIVATE DRIVE |
| | | 52 | 7800 | | | |
| BLOCK 1 | LOT | 53 | 1928 | JACK RABBIT WAY | N/S | PRIVATE DRIVE |
| | | 54 | 1924 | | | |
| | | 55 | 1920 | | | |
| | | 56 | 1916 | | | |
| | | 57 | 1912 | | | |
| | | 58 | 1908 | | | |
| | | 59 | 1904 | | | |
| | | 60 | 1900 | | | |
| | | 61 | 1832 | | | |
| | | 62 | 1828 | | | |
| | | 63 | 1824 | | | |
| | | 64 | 1820 | | | |
| | | 65 | 1816 | | | |
| | | 66 | 1812 | | | |
| | | 67 | 1808 | | | |
| | | 68 | 1804 | | | |
| | | 69 | 1800 | | | |
| | | 70 | 1728 | | | |
| | | 71 | 1724 | | | |
| | | 72 | 1720 | | | |
| | | 73 | 1716 | | | |
| | | 74 | 1712 | | | |
| | | 75 | 1708 | | | |
| | | 76 | 1704 | | | |
| | | 77 | 1700 | | | |
| BLOCK 1 | LOT | 78 | 7801 | FORT RUBY PLACE | E/W | PRIVATE DRIVE |
| | | 79 | 7805 | | | |
| | | 80 | 7809 | | | |
| | | 81 | 7813 | | | |
| | | 82 | 7817 | | | |
| BLOCK 2 | LOT | 7 | 1833 | GLORY CREEK DRIVE | N/S | PRIVATE DRIVE |
| | | 8 | 1821 | | | |
| | | 9 | 1813 | | | |
| | | 10 | 1809 | | | |
| | | 11 | 1801 | | | |
| | | 12 | 1800 | | | |
| | | 13 | 1804 | | | |

| BLOCK 2 | LOT | | | | | |
|---------|-----|------|-------------------|-----|---------------|--|
| | 14 | 1808 | GLORY CREEK DRIVE | N/S | PRIVATE DRIVE | |
| | 15 | 1812 | | | | |
| | 16 | 1816 | | | | |
| | 17 | 1820 | | | | |
| | 18 | 1824 | | | | |
| | 19 | 1828 | | | | |
| | 20 | 1832 | | | | |
| | 21 | 1900 | | | | |
| | 22 | 1904 | | | | |
| | 23 | 1908 | | | | |

| BLOCK 2 | LOT | | | | | |
|---------|-----|------|-----------------|-----|---------------|--|
| | 24 | 1913 | JACK RABBIT WAY | N/S | PRIVATE DRIVE | |
| | 25 | 1909 | | | | |
| | 26 | 1905 | | | | |
| | 27 | 1901 | | | | |
| | 28 | 1833 | | | | |
| | 29 | 1829 | | | | |
| | 30 | 1821 | | | | |
| | 31 | 1809 | | | | |
| | 32 | 1805 | | | | |
| | 33 | 1801 | | | | |
| | 34 | 1729 | | | | |
| | 35 | 1725 | | | | |
| | 36 | 1721 | | | | |

| BLOCK 2 | LOT | | | | | |
|---------|-----|------|-----------------|-----|---------------|--|
| | 37 | 7800 | FORT RUBY PLACE | E/W | PRIVATE DRIVE | |
| | 38 | 7804 | | | | |
| | 39 | 7808 | | | | |
| | 40 | 7812 | | | | |
| | 41 | 7816 | | | | |
| | 42 | 7820 | | | | |
| | 43 | 7824 | | | | |

| COMMON | LOT | | | | | |
|--------|-----|------|-----------------|-----|---------------|--|
| | A | 7819 | FORT RUBY PLACE | E/W | PRIVATE DRIVE | |
| | B | 7821 | | | | |
| | C | 7823 | | | | |
| | D | 7825 | | | | |

| STREETS WITH NO ADDRESSES: | | | | | |
|----------------------------|----------------|--|-----|---------------|--|
| | DEW POINT LANE | | N/S | PRIVATE DRIVE | |
| | BLUE EAGLE WAY | | E/W | PRIVATE DRIVE | |

CITY OF LAS VEGAS
DEPARTMENT OF COMMUNITY
PLANNING & DEVELOPMENT


KYLE C. WALTON
SENIOR PLANNER

OCTOBER 11, 1994

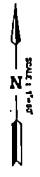
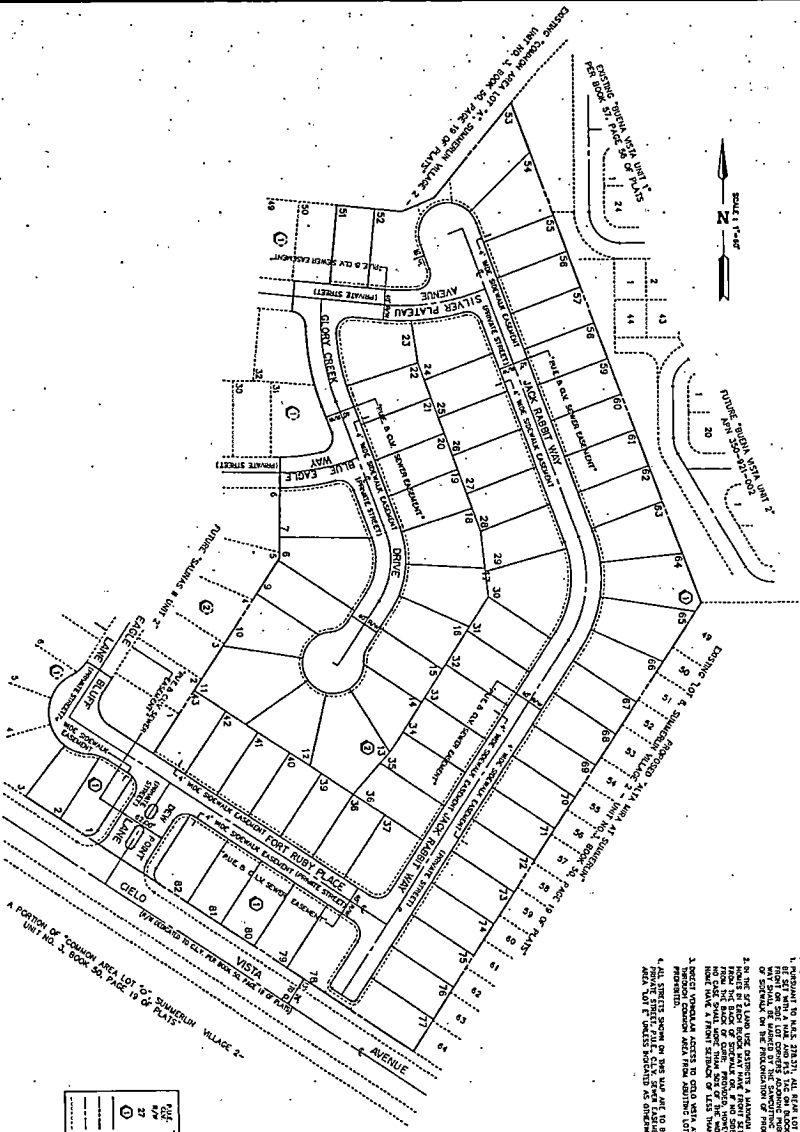
KCW/dr

010000

012000

SALINAS II UNIT 1

A PLANNED RESIDENTIAL COMMUNITY & COMMON INTEREST COMMUNITY
 BEING A PORTION OF LOT 5, AS SHOWN BY A MAP IN THE OFFICE OF THE CLARK COUNTY, NEVADA RECORDER, IN BOOK 50, PAGE 19 OF PLATS,
 SITUATED IN THE SOUTHEAST QUARTER (SE 1/4) OF SECTION 21, TOWNSHIP 20 SOUTH, RANGE 80 EAST, M.D.M., CITY OF LAS VEGAS, CLARK COUNTY, NEVADA.



- NOTES**
1. REFER TO MAP 202311, 44 1/2" X 60" CONCRETE SEAL IN PLACE ON THE TOP OF THE EXISTING CONCRETE CURB AND GUTTER AT THE INTERSECTION OF SILVER PLUME AVENUE AND VESTA AVENUE TO BE RECONSTRUCTED ON THE RECONSTRUCTION OF PROPERTY PLATS.
 2. IN THE 20' WIDE USE EXISTING A BARRICADE OF SOIL OR OF THE TYPE OF BARRICADE SHOWN ON THE EXISTING PLATS, FROM THE SOUTH SIDE OF VESTA AVENUE TO THE SOUTH SIDE OF SILVER PLUME AVENUE, THERE SHALL BE A 10' WIDE STRIP OF GRASS, WITH A 5' WIDE STRIP OF GRASS ON EACH SIDE OF THE STRIP.
 3. EXISTING COMMON AREAS SHALL REMAIN UNCHANGED UNLESS OTHERWISE SHOWN.
 4. PORTION OF THE MAP SET TO BE CONSIDERED AS PART OF THE PLAT FILE CL 11, STATE EXAMINER AND COMMON AREAS, LOT 1, SHEETS 202311, 202312, 202313, 202314.

LEGEND

| | | |
|---|-----|---------------|
| 1/4" = 1' (CONTOUR LINES & CITY OF LAS VEGAS STREETS) | 27 | EXISTING PLAT |
| 2" = 1' (CONTOUR LINES & CITY OF LAS VEGAS STREETS) | 28 | PROPOSED PLAT |
| 3" = 1' (CONTOUR LINES & CITY OF LAS VEGAS STREETS) | 29 | PROPOSED PLAT |
| 4" = 1' (CONTOUR LINES & CITY OF LAS VEGAS STREETS) | 30 | PROPOSED PLAT |
| 5" = 1' (CONTOUR LINES & CITY OF LAS VEGAS STREETS) | 31 | PROPOSED PLAT |
| 6" = 1' (CONTOUR LINES & CITY OF LAS VEGAS STREETS) | 32 | PROPOSED PLAT |
| 7" = 1' (CONTOUR LINES & CITY OF LAS VEGAS STREETS) | 33 | PROPOSED PLAT |
| 8" = 1' (CONTOUR LINES & CITY OF LAS VEGAS STREETS) | 34 | PROPOSED PLAT |
| 9" = 1' (CONTOUR LINES & CITY OF LAS VEGAS STREETS) | 35 | PROPOSED PLAT |
| 10" = 1' (CONTOUR LINES & CITY OF LAS VEGAS STREETS) | 36 | PROPOSED PLAT |
| 11" = 1' (CONTOUR LINES & CITY OF LAS VEGAS STREETS) | 37 | PROPOSED PLAT |
| 12" = 1' (CONTOUR LINES & CITY OF LAS VEGAS STREETS) | 38 | PROPOSED PLAT |
| 13" = 1' (CONTOUR LINES & CITY OF LAS VEGAS STREETS) | 39 | PROPOSED PLAT |
| 14" = 1' (CONTOUR LINES & CITY OF LAS VEGAS STREETS) | 40 | PROPOSED PLAT |
| 15" = 1' (CONTOUR LINES & CITY OF LAS VEGAS STREETS) | 41 | PROPOSED PLAT |
| 16" = 1' (CONTOUR LINES & CITY OF LAS VEGAS STREETS) | 42 | PROPOSED PLAT |
| 17" = 1' (CONTOUR LINES & CITY OF LAS VEGAS STREETS) | 43 | PROPOSED PLAT |
| 18" = 1' (CONTOUR LINES & CITY OF LAS VEGAS STREETS) | 44 | PROPOSED PLAT |
| 19" = 1' (CONTOUR LINES & CITY OF LAS VEGAS STREETS) | 45 | PROPOSED PLAT |
| 20" = 1' (CONTOUR LINES & CITY OF LAS VEGAS STREETS) | 46 | PROPOSED PLAT |
| 21" = 1' (CONTOUR LINES & CITY OF LAS VEGAS STREETS) | 47 | PROPOSED PLAT |
| 22" = 1' (CONTOUR LINES & CITY OF LAS VEGAS STREETS) | 48 | PROPOSED PLAT |
| 23" = 1' (CONTOUR LINES & CITY OF LAS VEGAS STREETS) | 49 | PROPOSED PLAT |
| 24" = 1' (CONTOUR LINES & CITY OF LAS VEGAS STREETS) | 50 | PROPOSED PLAT |
| 25" = 1' (CONTOUR LINES & CITY OF LAS VEGAS STREETS) | 51 | PROPOSED PLAT |
| 26" = 1' (CONTOUR LINES & CITY OF LAS VEGAS STREETS) | 52 | PROPOSED PLAT |
| 27" = 1' (CONTOUR LINES & CITY OF LAS VEGAS STREETS) | 53 | PROPOSED PLAT |
| 28" = 1' (CONTOUR LINES & CITY OF LAS VEGAS STREETS) | 54 | PROPOSED PLAT |
| 29" = 1' (CONTOUR LINES & CITY OF LAS VEGAS STREETS) | 55 | PROPOSED PLAT |
| 30" = 1' (CONTOUR LINES & CITY OF LAS VEGAS STREETS) | 56 | PROPOSED PLAT |
| 31" = 1' (CONTOUR LINES & CITY OF LAS VEGAS STREETS) | 57 | PROPOSED PLAT |
| 32" = 1' (CONTOUR LINES & CITY OF LAS VEGAS STREETS) | 58 | PROPOSED PLAT |
| 33" = 1' (CONTOUR LINES & CITY OF LAS VEGAS STREETS) | 59 | PROPOSED PLAT |
| 34" = 1' (CONTOUR LINES & CITY OF LAS VEGAS STREETS) | 60 | PROPOSED PLAT |
| 35" = 1' (CONTOUR LINES & CITY OF LAS VEGAS STREETS) | 61 | PROPOSED PLAT |
| 36" = 1' (CONTOUR LINES & CITY OF LAS VEGAS STREETS) | 62 | PROPOSED PLAT |
| 37" = 1' (CONTOUR LINES & CITY OF LAS VEGAS STREETS) | 63 | PROPOSED PLAT |
| 38" = 1' (CONTOUR LINES & CITY OF LAS VEGAS STREETS) | 64 | PROPOSED PLAT |
| 39" = 1' (CONTOUR LINES & CITY OF LAS VEGAS STREETS) | 65 | PROPOSED PLAT |
| 40" = 1' (CONTOUR LINES & CITY OF LAS VEGAS STREETS) | 66 | PROPOSED PLAT |
| 41" = 1' (CONTOUR LINES & CITY OF LAS VEGAS STREETS) | 67 | PROPOSED PLAT |
| 42" = 1' (CONTOUR LINES & CITY OF LAS VEGAS STREETS) | 68 | PROPOSED PLAT |
| 43" = 1' (CONTOUR LINES & CITY OF LAS VEGAS STREETS) | 69 | PROPOSED PLAT |
| 44" = 1' (CONTOUR LINES & CITY OF LAS VEGAS STREETS) | 70 | PROPOSED PLAT |
| 45" = 1' (CONTOUR LINES & CITY OF LAS VEGAS STREETS) | 71 | PROPOSED PLAT |
| 46" = 1' (CONTOUR LINES & CITY OF LAS VEGAS STREETS) | 72 | PROPOSED PLAT |
| 47" = 1' (CONTOUR LINES & CITY OF LAS VEGAS STREETS) | 73 | PROPOSED PLAT |
| 48" = 1' (CONTOUR LINES & CITY OF LAS VEGAS STREETS) | 74 | PROPOSED PLAT |
| 49" = 1' (CONTOUR LINES & CITY OF LAS VEGAS STREETS) | 75 | PROPOSED PLAT |
| 50" = 1' (CONTOUR LINES & CITY OF LAS VEGAS STREETS) | 76 | PROPOSED PLAT |
| 51" = 1' (CONTOUR LINES & CITY OF LAS VEGAS STREETS) | 77 | PROPOSED PLAT |
| 52" = 1' (CONTOUR LINES & CITY OF LAS VEGAS STREETS) | 78 | PROPOSED PLAT |
| 53" = 1' (CONTOUR LINES & CITY OF LAS VEGAS STREETS) | 79 | PROPOSED PLAT |
| 54" = 1' (CONTOUR LINES & CITY OF LAS VEGAS STREETS) | 80 | PROPOSED PLAT |
| 55" = 1' (CONTOUR LINES & CITY OF LAS VEGAS STREETS) | 81 | PROPOSED PLAT |
| 56" = 1' (CONTOUR LINES & CITY OF LAS VEGAS STREETS) | 82 | PROPOSED PLAT |
| 57" = 1' (CONTOUR LINES & CITY OF LAS VEGAS STREETS) | 83 | PROPOSED PLAT |
| 58" = 1' (CONTOUR LINES & CITY OF LAS VEGAS STREETS) | 84 | PROPOSED PLAT |
| 59" = 1' (CONTOUR LINES & CITY OF LAS VEGAS STREETS) | 85 | PROPOSED PLAT |
| 60" = 1' (CONTOUR LINES & CITY OF LAS VEGAS STREETS) | 86 | PROPOSED PLAT |
| 61" = 1' (CONTOUR LINES & CITY OF LAS VEGAS STREETS) | 87 | PROPOSED PLAT |
| 62" = 1' (CONTOUR LINES & CITY OF LAS VEGAS STREETS) | 88 | PROPOSED PLAT |
| 63" = 1' (CONTOUR LINES & CITY OF LAS VEGAS STREETS) | 89 | PROPOSED PLAT |
| 64" = 1' (CONTOUR LINES & CITY OF LAS VEGAS STREETS) | 90 | PROPOSED PLAT |
| 65" = 1' (CONTOUR LINES & CITY OF LAS VEGAS STREETS) | 91 | PROPOSED PLAT |
| 66" = 1' (CONTOUR LINES & CITY OF LAS VEGAS STREETS) | 92 | PROPOSED PLAT |
| 67" = 1' (CONTOUR LINES & CITY OF LAS VEGAS STREETS) | 93 | PROPOSED PLAT |
| 68" = 1' (CONTOUR LINES & CITY OF LAS VEGAS STREETS) | 94 | PROPOSED PLAT |
| 69" = 1' (CONTOUR LINES & CITY OF LAS VEGAS STREETS) | 95 | PROPOSED PLAT |
| 70" = 1' (CONTOUR LINES & CITY OF LAS VEGAS STREETS) | 96 | PROPOSED PLAT |
| 71" = 1' (CONTOUR LINES & CITY OF LAS VEGAS STREETS) | 97 | PROPOSED PLAT |
| 72" = 1' (CONTOUR LINES & CITY OF LAS VEGAS STREETS) | 98 | PROPOSED PLAT |
| 73" = 1' (CONTOUR LINES & CITY OF LAS VEGAS STREETS) | 99 | PROPOSED PLAT |
| 74" = 1' (CONTOUR LINES & CITY OF LAS VEGAS STREETS) | 100 | PROPOSED PLAT |

Book 4 of Page 12

SALINAS II UNIT 1

Recorded in Book 64 Page 18 of Plats, 9/30/94

Fire Dept. District Map #2217::77

200 Scale Location Map: 1-21-6

MASTER SUBDIVISION ADDRESS: 7802 CIELO VISTA AVENUE

| | | | | | | |
|---------|-----|----|------|-----------------------|-----|---------------|
| BLOCK 1 | LOT | 1 | 7829 | FORT RUBY PLACE | E/W | PRIVATE DRIVE |
| | | 2 | 7833 | | | |
| BLOCK 1 | LOT | 51 | 7804 | SILVER PLATEAU AVENUE | E/W | PRIVATE DRIVE |
| | | 52 | 7800 | | | |
| BLOCK 1 | LOT | 53 | 1928 | JACK RABBIT WAY | N/S | PRIVATE DRIVE |
| | | 54 | 1924 | | | |
| | | 55 | 1920 | | | |
| | | 56 | 1916 | | | |
| | | 57 | 1912 | | | |
| | | 58 | 1908 | | | |
| | | 59 | 1904 | | | |
| | | 60 | 1900 | | | |
| | | 61 | 1832 | | | |
| | | 62 | 1828 | | | |
| | | 63 | 1824 | | | |
| | | 64 | 1820 | | | |
| | | 65 | 1816 | | | |
| | | 66 | 1812 | | | |
| | | 67 | 1808 | | | |
| | | 68 | 1804 | | | |
| | | 69 | 1800 | | | |
| | | 70 | 1728 | | | |
| | | 71 | 1724 | | | |
| | | 72 | 1720 | | | |
| | | 73 | 1716 | | | |
| | | 74 | 1712 | | | |
| | | 75 | 1708 | | | |
| | | 76 | 1704 | | | |
| | | 77 | 1700 | | | |
| BLOCK 1 | LOT | 78 | 7801 | FORT RUBY PLACE | E/W | PRIVATE DRIVE |
| | | 79 | 7805 | | | |
| | | 80 | 7809 | | | |
| | | 81 | 7813 | | | |
| | | 82 | 7817 | | | |
| BLOCK 2 | LOT | 7 | 1833 | GLORY CREEK DRIVE | N/S | PRIVATE DRIVE |
| | | 8 | 1821 | | | |
| | | 9 | 1813 | | | |
| | | 10 | 1809 | | | |
| | | 11 | 1801 | | | |
| | | 12 | 1800 | | | |
| | | 13 | 1804 | | | |

| | | | | | | |
|---------|-----|----|------|-------------------|-----|---------------|
| BLOCK 2 | LOT | 14 | 1808 | GLORY CREEK DRIVE | N/S | PRIVATE DRIVE |
| | | 15 | 1812 | | | |
| | | 16 | 1816 | | | |
| | | 17 | 1820 | | | |
| | | 18 | 1824 | | | |
| | | 19 | 1828 | | | |
| | | 20 | 1832 | | | |
| | | 21 | 1900 | | | |
| | | 22 | 1904 | | | |
| | | 23 | 1908 | | | |


| | | | | | | |
|---------|-----|----|------|-----------------|-----|---------------|
| BLOCK 2 | LOT | 24 | 1913 | JACK RABBIT WAY | N/S | PRIVATE DRIVE |
| | | 25 | 1909 | | | |
| | | 26 | 1905 | | | |
| | | 27 | 1901 | | | |
| | | 28 | 1833 | | | |
| | | 29 | 1829 | | | |
| | | 30 | 1821 | | | |
| | | 31 | 1809 | | | |
| | | 32 | 1805 | | | |
| | | 33 | 1801 | | | |
| | | 34 | 1729 | | | |
| | | 35 | 1725 | | | |
| | | 36 | 1721 | | | |

| | | | | | | |
|---------|-----|----|------|-----------------|-----|---------------|
| BLOCK 2 | LOT | 37 | 7800 | FORT RUBY PLACE | E/W | PRIVATE DRIVE |
| | | 38 | 7804 | | | |
| | | 39 | 7808 | | | |
| | | 40 | 7812 | | | |
| | | 41 | 7816 | | | |
| | | 42 | 7820 | | | |
| | | 43 | 7824 | | | |

| | | | | | | |
|--------|-----|---|------|-----------------|-----|---------------|
| COMMON | LOT | A | 7819 | FORT RUBY PLACE | E/W | PRIVATE DRIVE |
| | | B | 7821 | | | |
| | | C | 7823 | | | |
| | | D | 7825 | | | |

| | | | | | | |
|----------------------------|--|--|--|----------------|-----|---------------|
| STREETS WITH NO ADDRESSES: | | | | DEW POINT LANE | N/S | PRIVATE DRIVE |
| | | | | BLUE EAGLE WAY | E/W | PRIVATE DRIVE |

CITY OF LAS VEGAS
 DEPARTMENT OF COMMUNITY
 PLANNING & DEVELOPMENT


 KYLE C. WALTON
 SENIOR PLANNER
 OCTOBER 11, 1994

KCW/dr

SALINAS II UNIT 1

Recorded in Book 64 Page 18 of Plats, 9/30/94

Fire Dept. District Map #2217::77

200 Scale Location Map: I-21-6

MASTER SUBDIVISION ADDRESS: 7802 CIELO VISTA AVENUE

| | | | | | | |
|---------|-----|----|------|-----------------------|-----|---------------|
| BLOCK 1 | LOT | 1 | 7829 | FORT RUBY PLACE | E/W | PRIVATE DRIVE |
| | | 2 | 7833 | | | |
| BLOCK 1 | LOT | 51 | 7804 | SILVER PLATEAU AVENUE | E/W | PRIVATE DRIVE |
| | | 52 | 7800 | | | |
| BLOCK 1 | LOT | 53 | 1928 | JACK RABBIT WAY | N/S | PRIVATE DRIVE |
| | | 54 | 1924 | | | |
| | | 55 | 1920 | | | |
| | | 56 | 1916 | | | |
| | | 57 | 1912 | | | |
| | | 58 | 1908 | | | |
| | | 59 | 1904 | | | |
| | | 60 | 1900 | | | |
| | | 61 | 1832 | | | |
| | | 62 | 1828 | | | |
| | | 63 | 1824 | | | |
| | | 64 | 1820 | | | |
| | | 65 | 1816 | | | |
| | | 66 | 1812 | | | |
| | | 67 | 1808 | | | |
| | | 68 | 1804 | | | |
| | | 69 | 1800 | | | |
| | | 70 | 1728 | | | |
| | | 71 | 1724 | | | |
| | | 72 | 1720 | | | |
| | | 73 | 1716 | | | |
| | | 74 | 1712 | | | |
| | | 75 | 1708 | | | |
| | | 76 | 1704 | | | |
| | | 77 | 1700 | | | |
| BLOCK 1 | LOT | 78 | 7801 | FORT RUBY PLACE | E/W | PRIVATE DRIVE |
| | | 79 | 7805 | | | |
| | | 80 | 7809 | | | |
| | | 81 | 7813 | | | |
| | | 82 | 7817 | | | |
| BLOCK 2 | LOT | 7 | 1833 | GLORY CREEK DRIVE | N/S | PRIVATE DRIVE |
| | | 8 | 1821 | | | |
| | | 9 | 1813 | | | |
| | | 10 | 1809 | | | |
| | | 11 | 1801 | | | |
| | | 12 | 1800 | | | |
| | | 13 | 1804 | | | |

| BLOCK 2 | LOT | | | | | |
|---------|-----|------|-------------------|-----|---------------|--|
| | 14 | 1808 | GLORY CREEK DRIVE | N/S | PRIVATE DRIVE | |
| | 15 | 1812 | | | | |
| | 16 | 1816 | | | | |
| | 17 | 1820 | | | | |
| | 18 | 1824 | | | | |
| | 19 | 1828 | | | | |
| | 20 | 1832 | | | | |
| | 21 | 1900 | | | | |
| | 22 | 1904 | | | | |
| | 23 | 1908 | | | | |


| BLOCK 2 | LOT | | | | | |
|---------|-----|------|-----------------|-----|---------------|--|
| | 24 | 1913 | JACK RABBIT WAY | N/S | PRIVATE DRIVE | |
| | 25 | 1909 | | | | |
| | 26 | 1905 | | | | |
| | 27 | 1901 | | | | |
| | 28 | 1833 | | | | |
| | 29 | 1829 | | | | |
| | 30 | 1821 | | | | |
| | 31 | 1809 | | | | |
| | 32 | 1805 | | | | |
| | 33 | 1801 | | | | |
| | 34 | 1729 | | | | |
| | 35 | 1725 | | | | |
| | 36 | 1721 | | | | |

| BLOCK 2 | LOT | | | | | |
|---------|-----|------|-----------------|-----|---------------|--|
| | 37 | 7800 | FORT RUBY PLACE | E/W | PRIVATE DRIVE | |
| | 38 | 7804 | | | | |
| | 39 | 7808 | | | | |
| | 40 | 7812 | | | | |
| | 41 | 7816 | | | | |
| | 42 | 7820 | | | | |
| | 43 | 7824 | | | | |

| COMMON | LOT | | | | | |
|--------|-----|------|-----------------|-----|---------------|--|
| | A | 7819 | FORT RUBY PLACE | E/W | PRIVATE DRIVE | |
| | B | 7821 | | | | |
| | C | 7823 | | | | |
| | D | 7825 | | | | |

| STREETS WITH NO ADDRESSES: | | | | | | |
|----------------------------|--|--|----------------|-----|---------------|--|
| | | | DEW POINT LANE | N/S | PRIVATE DRIVE | |
| | | | BLUE EAGLE WAY | E/W | PRIVATE DRIVE | |

CITY OF LAS VEGAS
DEPARTMENT OF COMMUNITY
PLANNING & DEVELOPMENT


KYLE C. WALTON
SENIOR PLANNER
OCTOBER 11, 1994

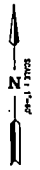
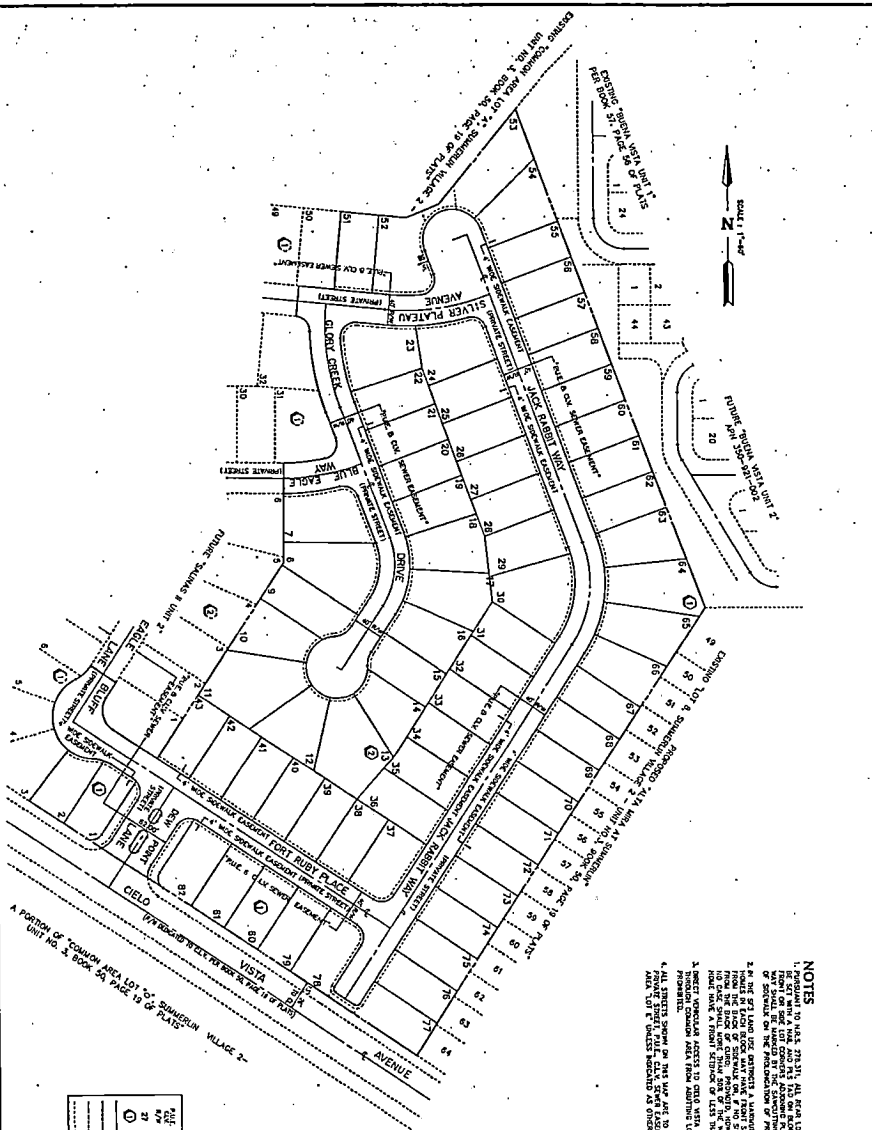
KCW/dr

012000

012000

SALINAS II UNIT 1

A PLANNED RESIDENTIAL COMMUNITY & COMMON INTEREST COMMUNITY
 BEING A PORTION OF LOT 5, AS SHOWN BY A MAP IN THE OFFICE OF THE CLARK COUNTY, NEVADA RECORDER IN BOOK 50, PAGE 19 OF PLATS,
 SITUATED IN THE SOUTHEAST QUARTER (SE 1/4) OF SECTION 21, TOWNSHIP 20 SOUTH, RANGE 60 EAST, M.D.M., CITY OF LAS VEGAS, CLARK COUNTY, NEVADA.



NOTES

1. REFER TO U.S.S. 792311, ALL FROM LOT CORNER S.W. 1/4 OF SECTION 21, TOWNSHIP 20 SOUTH, RANGE 60 EAST, M.D.M., CITY OF LAS VEGAS, CLARK COUNTY, NEVADA, AS SHOWN BY A MAP IN THE OFFICE OF THE CLARK COUNTY RECORDER IN BOOK 50, PAGE 19 OF PLATS.
2. THE SET LINE USE DESIGNATES A VARIETY OF USES OF THE LAND IN EACH OF THE LOTS AND IS NOT TO BE CONSIDERED AS A RESTRICTION ON THE USE OF THE LAND. THE SET LINE IS TO BE USED AS A GUIDE FOR THE LOCATION OF THE FRONT YARD SETBACK OF EACH LOT. A FRONT SETBACK OF LESS THAN 10' IS PERMITTED.
3. PERMITTED OCCUPANCY ASSESS AND OCCUPANCY USES ARE PERMITTED.
4. ALL UTILITIES SHALL BE INSTALLED IN ACCORDANCE WITH THE CITY OF LAS VEGAS, CLARK COUNTY, NEVADA, AND COMMON PRACTICE UNLESS SPECIFIED AS OTHERWISE.

LEGEND

| | |
|------|---|
| PLAT | PLANNED RESIDENTIAL COMMUNITY & COMMON INTEREST COMMUNITY |
| 27 | LOT NUMBER (TOTAL WAS MADE - 21) |
| ○ | ROCK MARKER |
| ○ | PERMITTED USE |
| ○ | PROPOSED USE |
| ○ | CONTRACT |
| ○ | EXISTING LOT |

Book 50 Page 12

SALINAS II UNIT 1

Recorded in Book 64 Page 18 of Plats, 9/30/94

Fire Dept. District Map #2217::77

200 Scale Location Map: I-21-6

MASTER SUBDIVISION ADDRESS: 7802 CIELO VISTA AVENUE

| | | | | | | |
|---------|-----|----|------|-----------------------|-----|---------------|
| BLOCK 1 | LOT | 1 | 7829 | FORT RUBY PLACE | E/W | PRIVATE DRIVE |
| | | 2 | 7833 | | | |
| BLOCK 1 | LOT | 51 | 7804 | SILVER PLATEAU AVENUE | E/W | PRIVATE DRIVE |
| | | 52 | 7800 | | | |
| BLOCK 1 | LOT | 53 | 1928 | JACK RABBIT WAY | N/S | PRIVATE DRIVE |
| | | 54 | 1924 | | | |
| | | 55 | 1920 | | | |
| | | 56 | 1916 | | | |
| | | 57 | 1912 | | | |
| | | 58 | 1908 | | | |
| | | 59 | 1904 | | | |
| | | 60 | 1900 | | | |
| | | 61 | 1832 | | | |
| | | 62 | 1828 | | | |
| | | 63 | 1824 | | | |
| | | 64 | 1820 | | | |
| | | 65 | 1816 | | | |
| | | 66 | 1812 | | | |
| | | 67 | 1808 | | | |
| | | 68 | 1804 | | | |
| | | 69 | 1800 | | | |
| | | 70 | 1728 | | | |
| | | 71 | 1724 | | | |
| | | 72 | 1720 | | | |
| | | 73 | 1716 | | | |
| | | 74 | 1712 | | | |
| | | 75 | 1708 | | | |
| | | 76 | 1704 | | | |
| | | 77 | 1700 | | | |
| BLOCK 1 | LOT | 78 | 7801 | FORT RUBY PLACE | E/W | PRIVATE DRIVE |
| | | 79 | 7805 | | | |
| | | 80 | 7809 | | | |
| | | 81 | 7813 | | | |
| | | 82 | 7817 | | | |
| BLOCK 2 | LOT | 7 | 1833 | GLORY CREEK DRIVE | N/S | PRIVATE DRIVE |
| | | 8 | 1821 | | | |
| | | 9 | 1813 | | | |
| | | 10 | 1809 | | | |
| | | 11 | 1801 | | | |
| | | 12 | 1800 | | | |
| | | 13 | 1804 | | | |

| BLOCK 2 | LOT | | | | | |
|---------|-----|------|-------------------|-----|---------------|--|
| | 14 | 1808 | GLORY CREEK DRIVE | N/S | PRIVATE DRIVE | |
| | 15 | 1812 | | | | |
| | 16 | 1816 | | | | |
| | 17 | 1820 | | | | |
| | 18 | 1824 | | | | |
| | 19 | 1828 | | | | |
| | 20 | 1832 | | | | |
| | 21 | 1900 | | | | |
| | 22 | 1904 | | | | |
| | 23 | 1908 | | | | |

| BLOCK 2 | LOT | | | | | |
|---------|-----|------|-----------------|-----|---------------|--|
| | 24 | 1913 | JACK RABBIT WAY | N/S | PRIVATE DRIVE | |
| | 25 | 1909 | | | | |
| | 26 | 1905 | | | | |
| | 27 | 1901 | | | | |
| | 28 | 1833 | | | | |
| | 29 | 1829 | | | | |
| | 30 | 1821 | | | | |
| | 31 | 1809 | | | | |
| | 32 | 1805 | | | | |
| | 33 | 1801 | | | | |
| | 34 | 1729 | | | | |
| | 35 | 1725 | | | | |
| | 36 | 1721 | | | | |

| BLOCK 2 | LOT | | | | | |
|---------|-----|------|-----------------|-----|---------------|--|
| | 37 | 7800 | FORT RUBY PLACE | E/W | PRIVATE DRIVE | |
| | 38 | 7804 | | | | |
| | 39 | 7808 | | | | |
| | 40 | 7812 | | | | |
| | 41 | 7816 | | | | |
| | 42 | 7820 | | | | |
| | 43 | 7824 | | | | |

| COMMON | LOT | | | | | |
|--------|-----|------|-----------------|-----|---------------|--|
| | A | 7819 | FORT RUBY PLACE | E/W | PRIVATE DRIVE | |
| | B | 7821 | | | | |
| | C | 7823 | | | | |
| | D | 7825 | | | | |

| STREETS WITH NO ADDRESSES: | | | | | |
|----------------------------|--|--|----------------|-----|---------------|
| | | | DEW POINT LANE | N/S | PRIVATE DRIVE |
| | | | BLUE EAGLE WAY | E/W | PRIVATE DRIVE |

CITY OF LAS VEGAS
DEPARTMENT OF COMMUNITY
PLANNING & DEVELOPMENT

KCW
KYLE C. WALTON
SENIOR PLANNER

OCTOBER 11, 1994

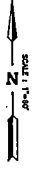
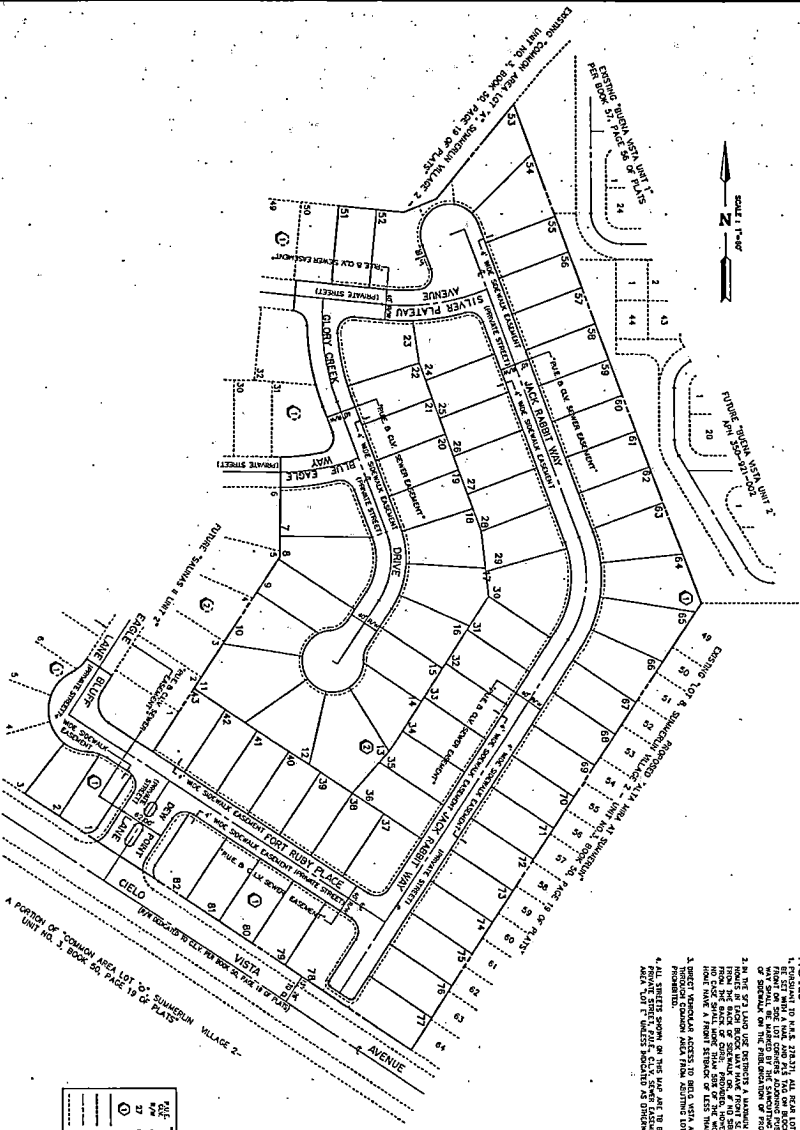
KCW/dr

0140909

012502

SALINAS II UNIT 1

A PLANNED RESIDENTIAL COMMUNITY & COMMON INTEREST COMMUNITY
 BEING A PORTION OF LOT 5, AS SHOWN BY A MAP IN THE OFFICE OF THE CLARK COUNTY, NEVADA RECORDER, IN BOOK 50, PAGE 19 OF PLATS,
 SITUATED IN THE SOUTHEAST QUARTER (SE 1/4) OF SECTION 21, TOWNSHIP 20 SOUTH, RANGE 60 EAST, M.D.M., CITY OF LAS VEGAS, CLARK COUNTY, NEVADA.



- NOTES**
1. ALL LOTS IN THIS PLAT, EXCEPT FOR THE COMMON INTEREST COMMUNITY, SHALL BE SUBJECT TO THE EASEMENTS AND RESTRICTIONS SHOWN ON THIS PLAT.
 2. THE COMMON INTEREST COMMUNITY SHALL BE BOUND BY THE COVENANTS AND RESTRICTIONS SHOWN ON THIS PLAT.
 3. IN THE EVENT OF A DISPUTE AS TO THE INTERPRETATION OF THIS PLAT, THE DECISION OF THE ARCHITECT SHALL BE FINAL AND BINDING ON ALL PARTIES.
 4. THE ARCHITECT'S OFFICE SHALL BE THE DESIGNER OF RECORD FOR THIS PLAT.
 5. THE ARCHITECT'S OFFICE SHALL BE THE DESIGNER OF RECORD FOR THIS PLAT.

LEGEND

| | |
|------|---------------------------------------|
| FILE | CONTRACTOR'S COPY OF LAS VEGAS RECORD |
| 8/2 | CONTRACTOR'S COPY OF LAS VEGAS RECORD |
| 27 | LOT ALIENATION (FORM HAS SIGN - 27) |
| ⊙ | ROCK MARKER |
| ⊙ | RESIDENTIAL LOT |
| ⊙ | RESIDENTIAL LOT |
| ⊙ | COMMON |
| ⊙ | COMMON |
| ⊙ | COMMON |

Book 4 of Page 12