

# LYNBROOK – Unit 10C

Recorded in Book 100 Page 100 of Plats

200 Scale Map Location: G-13-4

Fire Dept. District Map # 1421:48, 49

MASTER SITE ADDRESS: 7651 CATALINA HARBOR ST

BLOCK	24	LOT			WHISPERING SPRING	AVE	E/W	PRIVATE STREET
		748	4933					
		749	4929					
		750	4925					
		751	4921					
		752	4917					
		753	4913					
		754	4909					
		755	4905					
		756	4901					
		757	4837					
		758	4833					
		759	4829					
		760	4825					
		761	4821					
		762	4817					

BLOCK	25	LOT			WHISPERING SPRING	AVE	E/W	PRIVATE STREET
		763	4816					
		764	4820					
		765	4824					
		766	4828					
		767	4832					
		768	4836					
		769	4900					
		770	4904					
		771	4908					
		772	4912					
		773	4916					
		774	4920					
		775	4924					
		776	4928					
		777	4932					

ORIGINAL DATE: 7/25/2001

CITY OF LAS VEGAS  
PLANNING & DEVELOPMENT DEPARTMENT



DAVID R BRATCHER, SR PLANNER

# LYNBROOK – Unit 10C

Recorded in Book 100 Page 100 of Plats

200 Scale Map Location: G-13-4

Fire Dept. District Map # 1421:48, 49

MASTER SITE ADDRESS: 7651 CATALINA HARBOR ST

BLOCK	24	LOT			WHISPERING SPRING	AVE	E/W	PRIVATE STREET
			748	4933				
			749	4929				
			750	4925				
			751	4921				
			752	4917				
			753	4913				
			754	4909				
			755	4905				
			756	4901				
			757	4837				
			758	4833				
			759	4829				
			760	4825				
			761	4821				
			762	4817				

BLOCK	25	LOT			WHISPERING SPRING	AVE	E/W	PRIVATE STREET
			763	4816				
			764	4820				
			765	4824				
			766	4828				
			767	4832				
			768	4836				
			769	4900				
			770	4904				
			771	4908				
			772	4912				
			773	4916				
			774	4920				
			775	4924				
			776	4928				
			777	4932				

ORIGINAL DATE: 7/25/2001

CITY OF LAS VEGAS  
PLANNING & DEVELOPMENT DEPARTMENT



DAVID R BRATCHER, SR PLANNER

# LYNBROOK – Unit 10C

Recorded in Book 100 Page 100 of Plats

200 Scale Map Location: G-13-4

Fire Dept. District Map # 1421:48, 49

MASTER SITE ADDRESS: 7651 CATALINA HARBOR ST

BLOCK 24	LOT			WHISPERING SPRING	AVE	E/W	PRIVATE STREET
		748	4933				
		749	4929				
		750	4925				
		751	4921				
		752	4917				
		753	4913				
		754	4909				
		755	4905				
		756	4901				
		757	4837				
		758	4833				
		759	4829				
		760	4825				
		761	4821				
		762	4817				

BLOCK 25	LOT			WHISPERING SPRING	AVE	E/W	PRIVATE STREET
		763	4816				
		764	4820				
		765	4824				
		766	4828				
		767	4832				
		768	4836				
		769	4900				
		770	4904				
		771	4908				
		772	4912				
		773	4916				
		774	4920				
		775	4924				
		776	4928				
		777	4932				

ORIGINAL DATE: 7/25/2001

**CITY OF LAS VEGAS  
PLANNING & DEVELOPMENT DEPARTMENT**



**DAVID R BRATCHER, SR PLANNER**

# LYNBROOK – Unit 10C

Recorded in Book 100 Page 100 of Plats

200 Scale Map Location: G-13-4

Fire Dept. District Map # 1421:48, 49

MASTER SITE ADDRESS: 7651 CATALINA HARBOR ST

BLOCK	24	LOT			WHISPERING SPRING	AVE	E/W	PRIVATE STREET
		748	4933					
		749	4929					
		750	4925					
		751	4921					
		752	4917					
		753	4913					
		754	4909					
		755	4905					
		756	4901					
		757	4837					
		758	4833					
		759	4829					
		760	4825					
		761	4821					
		762	4817					

BLOCK	25	LOT			WHISPERING SPRING	AVE	E/W	PRIVATE STREET
		763	4816					
		764	4820					
		765	4824					
		766	4828					
		767	4832					
		768	4836					
		769	4900					
		770	4904					
		771	4908					
		772	4912					
		773	4916					
		774	4920					
		775	4924					
		776	4928					
		777	4932					

ORIGINAL DATE: 7/25/2001

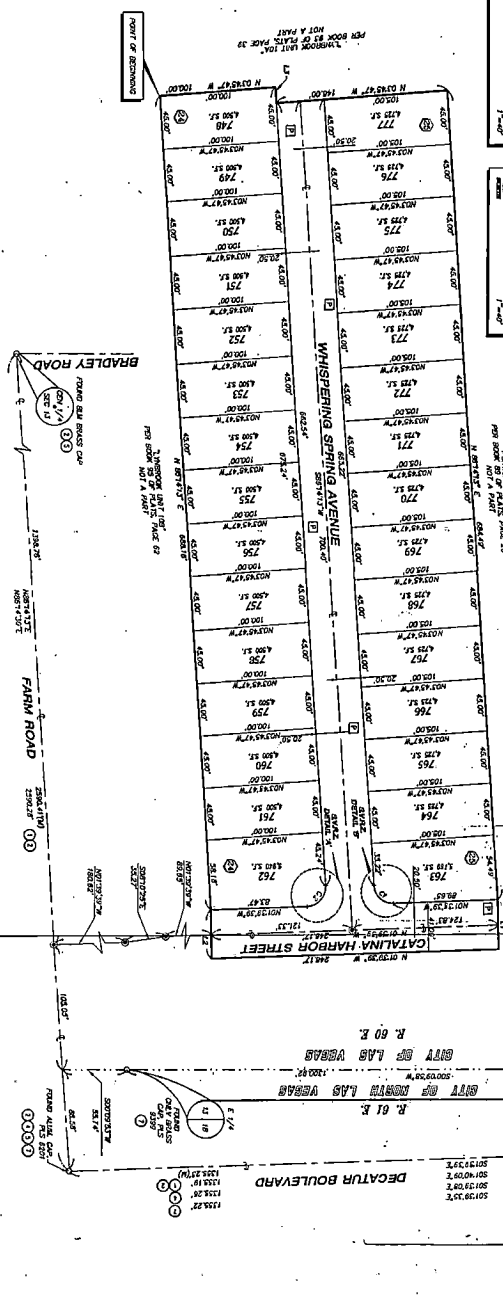
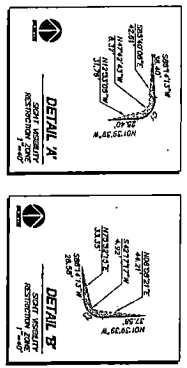
CITY OF LAS VEGAS  
PLANNING & DEVELOPMENT DEPARTMENT



DAVID R BRATCHER, SR PLANNER

# FINAL MAP OF: LYNBROOK - Unit 10C

A COMMON INTEREST COMMUNITY  
BEING A PORTION OF LOT B OF BLOCK 89 OF PLATS PAGE 28,  
MADON, CITY OF LAS VEGAS, CLARK COUNTY, NEVADA.



### HAP REFERENCES

- ① REF. 21 OF SURVEY PAGE 20
- ② REF. 27 OF SURVEY PAGE 23
- ③ REF. 23 OF FEDERAL MAPS PAGE 47
- ④ REF. 17 OF SURVEY PAGE 19
- ⑤ REF. 24 OF SURVEY PAGE 21
- ⑥ REF. 20 OF SURVEY PAGE 20
- ⑦ REF. 23 OF SURVEY PAGE 14

### LINE TABLE

LINE NO.	BEARING	DISTANCE
1	S 89° 52' 11.0\"/>	

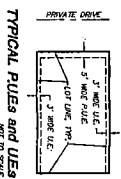
### CURVE TABLE

LINE NO.	BEARING	DISTANCE	CHORD BEARING	CHORD DISTANCE
1	S 89° 52' 11.0\"/>			

**TOTAL LOTS: 30**  
**TOTAL AREA: 418 ACRES**

**NOTES**

- THE PROPERTY SHOWN ON THIS MAP WAS SURVEYED BY THE LAS VEGAS "THE LIND" SURVEYING AND MAPPING COMPANY, INC. FOR THE PURPOSES OF THE SUBDIVISION OF THE PROPERTY SHOWN ON THIS MAP.
- THE PROPERTY SHOWN ON THIS MAP WAS SURVEYED BY THE LAS VEGAS "THE LIND" SURVEYING AND MAPPING COMPANY, INC. FOR THE PURPOSES OF THE SUBDIVISION OF THE PROPERTY SHOWN ON THIS MAP.
- THE PROPERTY SHOWN ON THIS MAP WAS SURVEYED BY THE LAS VEGAS "THE LIND" SURVEYING AND MAPPING COMPANY, INC. FOR THE PURPOSES OF THE SUBDIVISION OF THE PROPERTY SHOWN ON THIS MAP.



- ### LEGEND
- REPRESENTS THE CENTER POINT OF A CURVE
  - ① REPRESENTS THE CENTER POINT OF A CURVE
  - ② REPRESENTS THE CENTER POINT OF A CURVE
  - ③ REPRESENTS THE CENTER POINT OF A CURVE
  - ④ REPRESENTS THE CENTER POINT OF A CURVE
  - ⑤ REPRESENTS THE CENTER POINT OF A CURVE
  - ⑥ REPRESENTS THE CENTER POINT OF A CURVE
  - ⑦ REPRESENTS THE CENTER POINT OF A CURVE
  - ⑧ REPRESENTS THE CENTER POINT OF A CURVE
  - ⑨ REPRESENTS THE CENTER POINT OF A CURVE
  - ⑩ REPRESENTS THE CENTER POINT OF A CURVE
  - ⑪ REPRESENTS THE CENTER POINT OF A CURVE
  - ⑫ REPRESENTS THE CENTER POINT OF A CURVE
  - ⑬ REPRESENTS THE CENTER POINT OF A CURVE
  - ⑭ REPRESENTS THE CENTER POINT OF A CURVE
  - ⑮ REPRESENTS THE CENTER POINT OF A CURVE
  - ⑯ REPRESENTS THE CENTER POINT OF A CURVE
  - ⑰ REPRESENTS THE CENTER POINT OF A CURVE
  - ⑱ REPRESENTS THE CENTER POINT OF A CURVE
  - ⑲ REPRESENTS THE CENTER POINT OF A CURVE
  - ⑳ REPRESENTS THE CENTER POINT OF A CURVE
  - ㉑ REPRESENTS THE CENTER POINT OF A CURVE
  - ㉒ REPRESENTS THE CENTER POINT OF A CURVE
  - ㉓ REPRESENTS THE CENTER POINT OF A CURVE
  - ㉔ REPRESENTS THE CENTER POINT OF A CURVE
  - ㉕ REPRESENTS THE CENTER POINT OF A CURVE
  - ㉖ REPRESENTS THE CENTER POINT OF A CURVE
  - ㉗ REPRESENTS THE CENTER POINT OF A CURVE
  - ㉘ REPRESENTS THE CENTER POINT OF A CURVE
  - ㉙ REPRESENTS THE CENTER POINT OF A CURVE
  - ㉚ REPRESENTS THE CENTER POINT OF A CURVE
  - ㉛ REPRESENTS THE CENTER POINT OF A CURVE
  - ㉜ REPRESENTS THE CENTER POINT OF A CURVE
  - ㉝ REPRESENTS THE CENTER POINT OF A CURVE
  - ㉞ REPRESENTS THE CENTER POINT OF A CURVE
  - ㉟ REPRESENTS THE CENTER POINT OF A CURVE
  - ㊱ REPRESENTS THE CENTER POINT OF A CURVE
  - ㊲ REPRESENTS THE CENTER POINT OF A CURVE
  - ㊳ REPRESENTS THE CENTER POINT OF A CURVE
  - ㊴ REPRESENTS THE CENTER POINT OF A CURVE
  - ㊵ REPRESENTS THE CENTER POINT OF A CURVE
  - ㊶ REPRESENTS THE CENTER POINT OF A CURVE
  - ㊷ REPRESENTS THE CENTER POINT OF A CURVE
  - ㊸ REPRESENTS THE CENTER POINT OF A CURVE
  - ㊹ REPRESENTS THE CENTER POINT OF A CURVE
  - ㊺ REPRESENTS THE CENTER POINT OF A CURVE
  - ㊻ REPRESENTS THE CENTER POINT OF A CURVE
  - ㊼ REPRESENTS THE CENTER POINT OF A CURVE
  - ㊽ REPRESENTS THE CENTER POINT OF A CURVE
  - ㊾ REPRESENTS THE CENTER POINT OF A CURVE
  - ㊿ REPRESENTS THE CENTER POINT OF A CURVE

FILE COPY

**FM-68-00**

2 of 2