

NORTHERN LIGHTS AT ELKHORN SPRINGS UNIT 2

Recorded in Book 76 Page 66 of Plats

200 Scale Map Location: G-16-6

Fire Dept. District Map # 1417:77, 78

MASTER SITE ADDRESS: 7311 TEALWOOD ST

BLOCK A	LOT	1	7249	TEALWOOD ST	N/S	PUBLIC STREET
BLOCK A	LOT	26	7248	COTTONSPARROW ST	N/S	PUBLIC STREET
BLOCK B	LOT	27	7245	COTTONSPARROW ST	N/S	PUBLIC STREET
BLOCK B	LOT	50	7244	BUGLEHORN ST	N/S	PUBLIC STREET
BLOCK C	LOT	51	7241	BUGLEHORN ST	N/S	PUBLIC STREET
BLOCK C	LOT	71	7240	GOLDEN FALCON ST	N/S	PUBLIC STREET
BLOCK D	LOT	72	7237	GOLDEN FALCON ST	N/S	PUBLIC STREET
BLOCK D	LOT	89	7236	EAGLEGATE ST	N/S	PUBLIC STREET
BLOCK E	LOT	90	7828	GOLDEN TALON AVE	E/W	PUBLIC STREET
		91	7824			
		92	7820			
		93	7816			
		94	7812			
		95	7808			
		96	7804			
		97	7800			
		98	7724			
		99	7720			
		100	7716			
		101	7712			
		102	7708			
		103	7704			
		104	7700			
BLOCK E	LOT	**		TEALWOOD ST	N/S	PUBLIC STREET
		105	7301			
		106	7305			
		107	7309			
BLOCK E	LOT	108	7701	ROBINGLEN AVE	E/W	PUBLIC STREET
		109	7705			
		110	7709			
		111	7713			
		112	7717			
		113	7721			
		114	7725			
		115	7801			
		116	7805			
		117	7809			
		118	7813			
		119	7817			
		120	7821			

****SEE "AMENDED FINAL MAP OF A PORTION OF NORTHERN LIGHTS AT ELKHORN SPRINGS UNIT 2" that eliminates LOT 123, BLOCK F, and adjusts the Lot Lines from LOTS 124 through 127 and between LOTS 105 and 106, BLOCK E. Recorded 2/27/98, BOOK 83, PAGE 22,**

NO LONGER A PART OF THIS PLAT

NORTHERN LIGHTS AT ELKHORN SPRINGS UNIT 2

BLOCK E	LOT	121 7825	ROBINGLEN AVE	EW	PUBLIC STREET
		122 7829			
BLOCK F	LOT	123 7828	ROBINGLEN AVE	EW	PUBLIC STREET
		124 7824			
		125 7820			
		126 7816			
		127 7812			
		128 7808			
		129 7804			
		130 7800			
		131 7724			
		132 7720			
		133 7716			
		134 7712			
		135 7708			
		136 7704			
		137 7700			
BLOCK H	LOT	215 7325	EAGLEGATE ST	N/S	PUBLIC STREET
		216 7321			
		217 7317			
		218 7313			
		219 7309			
		220 7305			
		221 7301			
		222 7237			

ORIGINAL DATE: 10/17/1996

CITY OF LAS VEGAS
PLANNING & DEVELOPMENT DEPARTMENT



KYLE C WALTON, SENIOR PLANNER

***LOT 123 has been REMOVED: LOT LINES MOVED
between LOTS 124-127. NO LONGER A PART OF
THIS PLAT: See AMENDED**

NORTHERN LIGHTS AT ELKHORN SPRINGS UNIT 2

Recorded in Book 76 Page 66 of Plats

200 Scale Map Location: G-16-6

Fire Dept. District Map # 1417:77, 78

MASTER SITE ADDRESS: 7311 TEALWOOD ST

BLOCK A	LOT	1	7249	TEALWOOD ST	N/S	PUBLIC STREET
BLOCK A	LOT	26	7248	COTTONSPARROW ST	N/S	PUBLIC STREET
BLOCK B	LOT	27	7245	COTTONSPARROW ST	N/S	PUBLIC STREET
BLOCK B	LOT	50	7244	BUGLEHORN ST	N/S	PUBLIC STREET
BLOCK C	LOT	51	7241	BUGLEHORN ST	N/S	PUBLIC STREET
BLOCK C	LOT	71	7240	GOLDEN FALCON ST	N/S	PUBLIC STREET
BLOCK D	LOT	72	7237	GOLDEN FALCON ST	N/S	PUBLIC STREET
BLOCK D	LOT	89	7236	EAGLEGATE ST	N/S	PUBLIC STREET
BLOCK E	LOT	90	7828	GOLDEN TALON AVE	E/W	PUBLIC STREET
		91	7824			
		92	7820			
		93	7816			
		94	7812			
		95	7808			
		96	7804			
		97	7800			
		98	7724			
		99	7720			
		100	7716			
		101	7712			
		102	7708			
		103	7704			
		104	7700			
BLOCK E	LOT	**		TEALWOOD ST	N/S	PUBLIC STREET
			105 7301			
			106 7305			
			107 7309			
BLOCK E	LOT	108	7701	ROBINGLEN AVE	E/W	PUBLIC STREET
		109	7705			
		110	7709			
		111	7713			
		112	7717			
		113	7721			
		114	7725			
		115	7801			
		116	7805			
		117	7809			
		118	7813			
		119	7817			
		120	7821			


**** SEE "AMENDED FINAL MAP OF A PORTION OF NORTHERN LIGHTS AT ELKHORN SPRINGS UNIT 2" that eliminates LOT 123, BLOCK F, and adjusts the Lot Lines from LOTS 124 through 127 and between LOTS 105 and 106, BLOCK E. Recorded 2/27/98, BOOK 83, PAGE 22, NO LONGER A PART OF THIS PLAT**

NORTHERN LIGHTS AT ELKHORN SPRINGS UNIT 2

BLOCK E	LOT	121 7825	ROBINGLEN AVE	EW	PUBLIC STREET
		122 7829			
BLOCK F	LOT	123 7828	ROBINGLEN AVE	EW	PUBLIC STREET
		124 7824			
		125 7820			
		126 7816			
		127 7812			
		128 7808			
		129 7804			
		130 7800			
		131 7724			
		132 7720			
		133 7716			
		134 7712			
		135 7708			
		136 7704			
		137 7700			
BLOCK H	LOT	215 7325	EAGLEGATE ST	N/S	PUBLIC STREET
		216 7321			
		217 7317			
		218 7313			
		219 7309			
		220 7305			
		221 7301			
		222 7237			

ORIGINAL DATE: 10/17/1996

CITY OF LAS VEGAS
PLANNING & DEVELOPMENT DEPARTMENT


KYLE C WALTON, SENIOR PLANNER

***LOT 123 has been REMOVED: LOT LINES MOVED
between LOTS 124-127. NO LONGER A PART OF
THIS PLAT: See AMENDED**

NORTHERN LIGHTS AT ELKHORN SPRINGS UNIT 2

Recorded in Book 76 Page 66 of Plats

200 Scale Map Location: G-16-6

Fire Dept. District Map # 1417:77, 78

MASTER SITE ADDRESS: 7311 TEALWOOD ST

BLOCK A	LOT	1	7249	TEALWOOD ST	N/S	PUBLIC STREET
BLOCK A	LOT	26	7248	COTTONSPARROW ST	N/S	PUBLIC STREET
BLOCK B	LOT	27	7245	COTTONSPARROW ST	N/S	PUBLIC STREET
BLOCK B	LOT	50	7244	BUGLEHORN ST	N/S	PUBLIC STREET
BLOCK C	LOT	51	7241	BUGLEHORN ST	N/S	PUBLIC STREET
BLOCK C	LOT	71	7240	GOLDEN FALCON ST	N/S	PUBLIC STREET
BLOCK D	LOT	72	7237	GOLDEN FALCON ST	N/S	PUBLIC STREET
BLOCK D	LOT	89	7236	EAGLEGATE ST	N/S	PUBLIC STREET
BLOCK E	LOT	90	7828	GOLDEN TALON AVE	E/W	PUBLIC STREET
		91	7824			
		92	7820			
		93	7816			
		94	7812			
		95	7808			
		96	7804			
		97	7800			
		98	7724			
		99	7720			
		100	7716			
		101	7712			
		102	7708			
		103	7704			
		104	7700			
BLOCK E	LOT	**		TEALWOOD ST	N/S	PUBLIC STREET
			105 7301			
			106 7305			
			107 7309			
BLOCK E	LOT	108	7701	ROBINGLEN AVE	E/W	PUBLIC STREET
		109	7705			
		110	7709			
		111	7713			
		112	7717			
		113	7721			
		114	7725			
		115	7801			
		116	7805			
		117	7809			
		118	7813			
		119	7817			
		120	7821			

**** SEE "AMENDED FINAL MAP OF A PORTION OF NORTHERN LIGHTS AT ELKHORN SPRINGS UNIT 2" that eliminates LOT 123, BLOCK F, and adjusts the Lot Lines from LOTS 124 through 127 and between LOTS 105 and 106, BLOCK E. Recorded 2/27/98, BOOK 83, PAGE 22,**

NO LONGER A PART OF THIS PLAT

NORTHERN LIGHTS AT ELKHORN SPRINGS UNIT 2

BLOCK E	LOT	121	7825	ROBINGLEN AVE	E/W	PUBLIC STREET
		122	7829			
BLOCK F	LOT	123	7828	ROBINGLEN AVE	E/W	PUBLIC STREET
		124	7824			
		125	7820			
		126	7816			
		127	7812			
		128	7808			
		129	7804			
		130	7800			
		131	7724			
		132	7720			
		133	7716			
		134	7712			
		135	7708			
		136	7704			
		137	7700			
BLOCK H	LOT	215	7325	EAGLEGATE ST	N/S	PUBLIC STREET
		216	7321			
		217	7317			
		218	7313			
		219	7309			
		220	7305			
		221	7301			
		222	7237			

ORIGINAL DATE: 10/17/1996

CITY OF LAS VEGAS
PLANNING & DEVELOPMENT DEPARTMENT



KYLE C WALTON, SENIOR PLANNER

***LOT 123 has been REMOVED: LOT LINES MOVED
between LOTS 124-127. NO LONGER A PART OF
THIS PLAT: See AMENDED**

NORTHERN LIGHTS AT ELKHORN SPRINGS UNIT 2

Recorded in Book 76 Page 66 of Plats

200 Scale Map Location: G-16-6

Fire Dept. District Map # 1417:77, 78

MASTER SITE ADDRESS: 7311 TEALWOOD ST

BLOCK A	LOT	1	7249	TEALWOOD ST	N/S	PUBLIC STREET
BLOCK A	LOT	26	7248	COTTONSPARROW ST	N/S	PUBLIC STREET
BLOCK B	LOT	27	7245	COTTONSPARROW ST	N/S	PUBLIC STREET
BLOCK B	LOT	50	7244	BUGLEHORN ST	N/S	PUBLIC STREET
BLOCK C	LOT	51	7241	BUGLEHORN ST	N/S	PUBLIC STREET
BLOCK C	LOT	71	7240	GOLDEN FALCON ST	N/S	PUBLIC STREET
BLOCK D	LOT	72	7237	GOLDEN FALCON ST	N/S	PUBLIC STREET
BLOCK D	LOT	89	7236	EAGLEGATE ST	N/S	PUBLIC STREET
BLOCK E	LOT	90	7828	GOLDEN TALON AVE	E/W	PUBLIC STREET
		91	7824			
		92	7820			
		93	7816			
		94	7812			
		95	7808			
		96	7804			
		97	7800			
		98	7724			
		99	7720			
		100	7716			
		101	7712			
		102	7708			
		103	7704			
		104	7700			
BLOCK E	LOT	**	105 7301	TEALWOOD ST	N/S	PUBLIC STREET
			106 7305			
			107 7309			
BLOCK E	LOT	108	7701	ROBINGLEN AVE	E/W	PUBLIC STREET
		109	7705			
		110	7709			
		111	7713			
		112	7717			
		113	7721			
		114	7725			
		115	7801			
		116	7805			
		117	7809			
		118	7813			
		119	7817			
		120	7821			

**** SEE "AMENDED FINAL MAP OF A PORTION OF NORTHERN LIGHTS AT ELKHORN SPRINGS UNIT 2" that eliminates LOT 123, BLOCK F, and adjusts the Lot Lines from LOTS 124 through 127 and between LOTS 105 and 106, BLOCK E. Recorded 2/27/98, BOOK 83, PAGE 22,**

NO LONGER A PART OF THIS PLAT

NORTHERN LIGHTS AT ELKHORN SPRINGS UNIT 2

BLOCK E	LOT	121 7825	ROBINGLEN AVE	EW	PUBLIC STREET
		122 7829			
BLOCK F	LOT	123 7828	ROBINGLEN AVE	EW	PUBLIC STREET
		124 7824			
		125 7820			
		126 7816			
		127 7812			
		128 7808			
		129 7804			
		130 7800			
		131 7724			
		132 7720			
		133 7716			
		134 7712			
		135 7708			
		136 7704			
		137 7700			
BLOCK H	LOT	215 7325	EAGLEGATE ST	N/S	PUBLIC STREET
		216 7321			
		217 7317			
		218 7313			
		219 7309			
		220 7305			
		221 7301			
		222 7237			

ORIGINAL DATE: 10/17/1996

CITY OF LAS VEGAS
PLANNING & DEVELOPMENT DEPARTMENT



KYLE C WALTON, SENIOR PLANNER

***LOT 123 has been REMOVED: LOT LINES MOVED
between LOTS 124-127. NO LONGER A PART OF
THIS PLAT: See AMENDED**

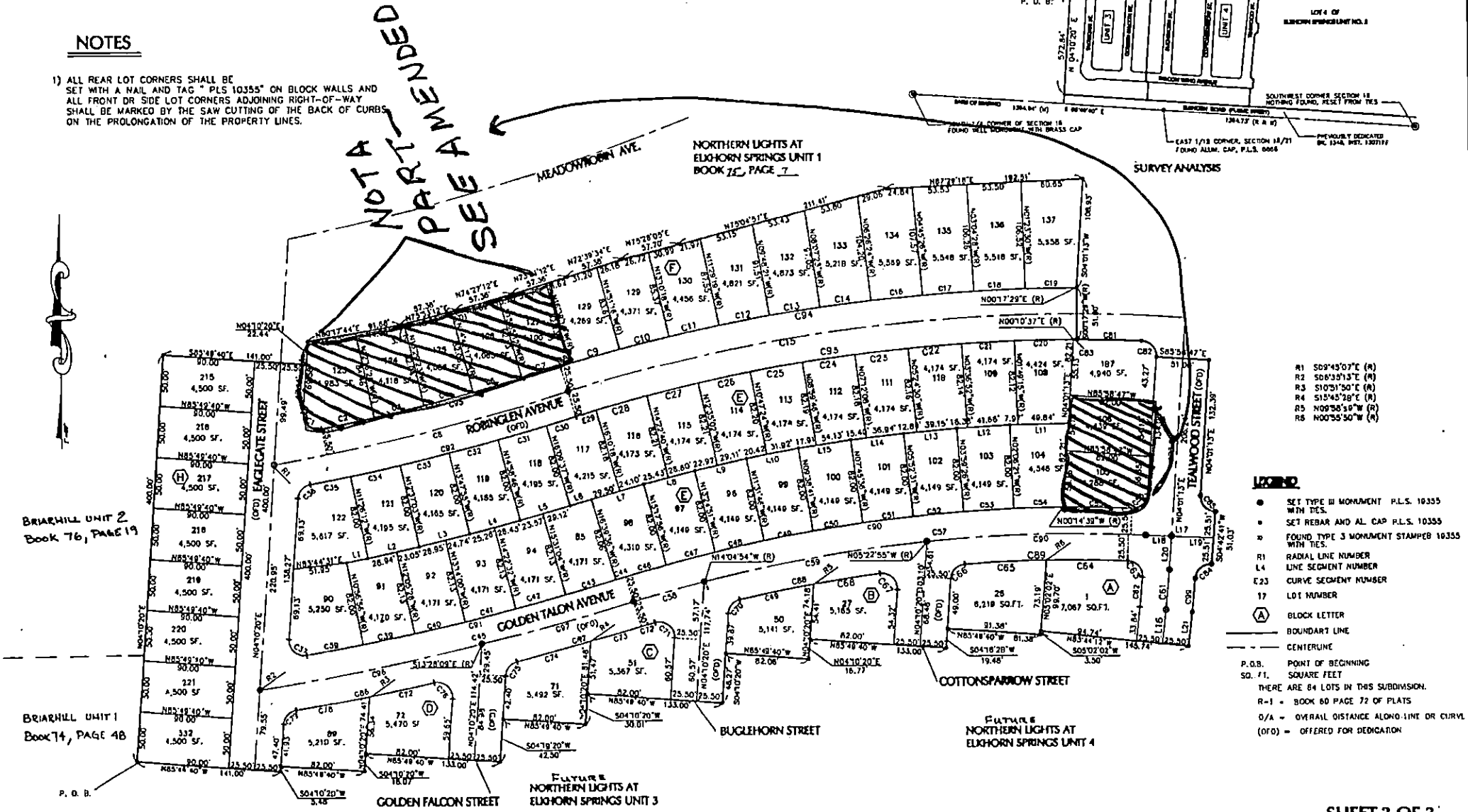
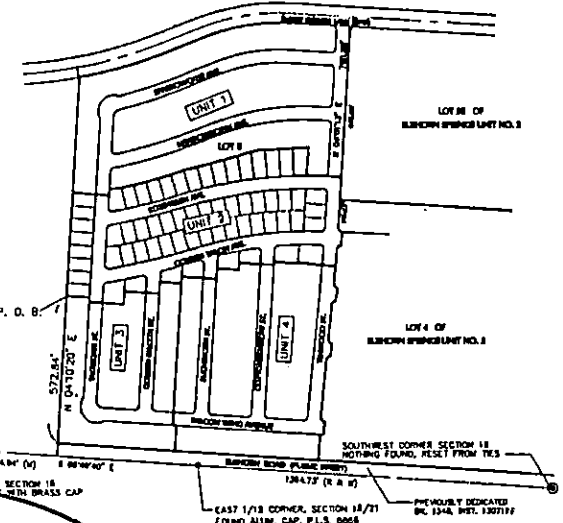
FINAL MAP OF NORTHERN LIGHTS AT ELKHORN SPRINGS UNIT 2

A PORTION OF LOT 5 OF ELKHORN SPRINGS UNIT NO. 2 BOOK 74, PAGE 01, OF PLATS; SECTION 16,
TOWNSHIP 19 SOUTH, RANGE 6D EAST, M.D.M. CITY OF LAS VEGAS, CLARK COUNTY, NEVADA

NOTES

- 1) ALL REAR LOT CORNERS SHALL BE SET WITH A NAIL AND TAG "PLS 10355" ON BLOCK WALLS AND ALL FRONT DR SIDE LOT CORNERS ADJOINING RIGHT-OF-WAY SHALL BE MARKED BY THE SAW CUTTING OF THE BACK OF CURBS ON THE PROLONGATION OF THE PROPERTY LINES.

NOT A PART - SEE A -



- R1 S09°45'07"E (R)
- R2 S06°35'13"E (R)
- R3 S10°51'50"E (R)
- R4 S15°45'38"E (R)
- R5 N09°58'5"W (R)
- R6 N00°55'50"W (R)

- LEGEND**
- SET TYPE III MONUMENT P.L.S. 10355 WITH TIES.
 - SET REBAR AND AL. CAP P.L.S. 10355
 - ✱ FOUND TYPE 3 MONUMENT STAMPED 10355
 - R1 RADIAL LINE NUMBER
 - L4 LINE SEGMENT NUMBER
 - E23 CURVE SEGMENT NUMBER
 - 17 LOT NUMBER
 - (A) BLOCK LETTER
 - BOUNDARY LINE
 - - - CENTERLINE

- P.O.B. POINT OF BEGINNING
- SQ. FT. SQUARE FEET
- THERE ARE 84 LOTS IN THIS SUBDIVISION.
- R-1 = BOOK 60 PAGE 72 OF PLATS
- O/A = OVERALL DISTANCE ALONG LINE OR CURVE
- (OPD) = OFFERED FOR DEDICATION