

TENAYA & OAKEY

Recorded in Book 108 Page 93 of Plats

200 Scale Map Location: Q-3-3

Fire Dept. District Map # 2518:45

MASTER SITE ADDRESS: 7302 W. OAKEY BLV

BLOCK A	LOT	1	1710	SONGLIGHT CT	N/S	PRIVATE STREET
		2	1700			
		3	1620			
		4	1610			
		5	1600			
		6	1611			
		7	1621			
		8	1701			
		9	1711			
Common Area	A	1629	SONGLIGHT CT	N/S	PRIVATE STREET	
	B	1630				

THE ADDRESSES HAVE BEEN CORRECTED. THIS SUPERCEDES THE FEBRUARY 20TH PRINTING.

There are no addresses on TENAYA WAY (N/S Public Street).

ORIGINAL DATE: 2/04/2003

**CITY OF LAS VEGAS
PLANNING & DEVELOPMENT DEPARTMENT**



JASON ALLSWANG, SR PLANNER

TENAYA & OAKEY

Recorded in Book 108 Page 93 of Plats

200 Scale Map Location: Q-3-3

Fire Dept. District Map # 2518:45

MASTER SITE ADDRESS: 7302 W. OAKEY BLV

BLOCK A	LOT	1	1710	SONGLIGHT CT	N/S	PRIVATE STREET
		2	1700			
		3	1620			
		4	1610			
		5	1600			
		6	1611			
		7	1621			
		8	1701			
		9	1711			
Common Area	A	1629	SONGLIGHT CT	N/S	PRIVATE STREET	
	B	1630				

THE ADDRESSES HAVE BEEN CORRECTED. THIS SUPERCEDES THE FEBRUARY 20TH PRINTING.
 There are no addresses on TENAYA WAY (N/S Public Street).

ORIGINAL DATE: 2/04/2003

**CITY OF LAS VEGAS
 PLANNING & DEVELOPMENT DEPARTMENT**



JASON ALLSWANG, SR PLANNER

TENAYA & OAKEY

Recorded in Book 108 Page 93 of Plats

200 Scale Map Location: Q-3-3

Fire Dept. District Map # 2518:45

MASTER SITE ADDRESS: 7302 W. OAKEY BLV

BLOCK A	LOT	1	1710	SONGLIGHT CT	N/S	PRIVATE STREET
		2	1700			
		3	1620			
		4	1610			
		5	1600			
		6	1611			
		7	1621			
		8	1701			
		9	1711			
Common Area	A	1629	SONGLIGHT CT	N/S	PRIVATE STREET	
	B	1630				

THE ADDRESSES HAVE BEEN CORRECTED. THIS SUPERCEDES THE FEBRUARY 20TH PRINTING.
 There are no addresses on TENAYA WAY (N/S Public Street).

ORIGINAL DATE: 2/04/2003

**CITY OF LAS VEGAS
 PLANNING & DEVELOPMENT DEPARTMENT**



JASON ALLSWANG, SR PLANNER

TENAYA & OAKLEY

A COMMON INTEREST COMMUNITY

BEING A MERGER AND RE-SUBDIVISION OF LOTS ONE (1) THROUGH NINE (9) IN BLOCK ONE (1) OF MOUNTAIN SHADOWS IV, AS SHOWN BY MAP THEREOF ON FILE IN BOOK 88 OF PLATS ON PAGE 71, OFFICIAL RECORDS OF CLARK COUNTY, NEVADA, LOCATED WITHIN A PORTION OF THE SOUTHEAST QUARTER (SE 1/4) OF THE NORTHWEST QUARTER (NW 1/4) OF SECTION 4, TOWNSHIP 21 SOUTH, RANGE 60 EAST, M.D.M.

BASES OF REASONS:
 REC'D 12/17/11 - BEING THE EAST LINE OF THE SOUTHWEST QUARTER OF THE SOUTHWEST QUARTER OF SECTION 3, TOWNSHIP 21 SOUTH, RANGE 60 EAST, M.D.M., COUNTY OF CLARK, STATE OF NEVADA, AS SHOWN ON THAT CERTAIN PLAT MAP RECORDED IN BOOK 88 OF PLAT MAPS ON PAGE 71, OFFICIAL RECORDS OF SAID COUNTY AND STATE.

RADIAL BEASONS

LINE	BEARING	DISTANCE
1	S 89° 57' 30" E	120.00
2	S 89° 57' 30" E	120.00
3	S 89° 57' 30" E	120.00
4	S 89° 57' 30" E	120.00
5	S 89° 57' 30" E	120.00
6	S 89° 57' 30" E	120.00
7	S 89° 57' 30" E	120.00
8	S 89° 57' 30" E	120.00
9	S 89° 57' 30" E	120.00
10	S 89° 57' 30" E	120.00
11	S 89° 57' 30" E	120.00
12	S 89° 57' 30" E	120.00
13	S 89° 57' 30" E	120.00
14	S 89° 57' 30" E	120.00
15	S 89° 57' 30" E	120.00
16	S 89° 57' 30" E	120.00
17	S 89° 57' 30" E	120.00
18	S 89° 57' 30" E	120.00
19	S 89° 57' 30" E	120.00
20	S 89° 57' 30" E	120.00
21	S 89° 57' 30" E	120.00
22	S 89° 57' 30" E	120.00
23	S 89° 57' 30" E	120.00
24	S 89° 57' 30" E	120.00
25	S 89° 57' 30" E	120.00
26	S 89° 57' 30" E	120.00
27	S 89° 57' 30" E	120.00
28	S 89° 57' 30" E	120.00
29	S 89° 57' 30" E	120.00
30	S 89° 57' 30" E	120.00
31	S 89° 57' 30" E	120.00
32	S 89° 57' 30" E	120.00
33	S 89° 57' 30" E	120.00
34	S 89° 57' 30" E	120.00
35	S 89° 57' 30" E	120.00
36	S 89° 57' 30" E	120.00
37	S 89° 57' 30" E	120.00
38	S 89° 57' 30" E	120.00
39	S 89° 57' 30" E	120.00
40	S 89° 57' 30" E	120.00
41	S 89° 57' 30" E	120.00
42	S 89° 57' 30" E	120.00
43	S 89° 57' 30" E	120.00
44	S 89° 57' 30" E	120.00
45	S 89° 57' 30" E	120.00
46	S 89° 57' 30" E	120.00
47	S 89° 57' 30" E	120.00
48	S 89° 57' 30" E	120.00
49	S 89° 57' 30" E	120.00
50	S 89° 57' 30" E	120.00
51	S 89° 57' 30" E	120.00
52	S 89° 57' 30" E	120.00
53	S 89° 57' 30" E	120.00
54	S 89° 57' 30" E	120.00
55	S 89° 57' 30" E	120.00
56	S 89° 57' 30" E	120.00
57	S 89° 57' 30" E	120.00
58	S 89° 57' 30" E	120.00
59	S 89° 57' 30" E	120.00
60	S 89° 57' 30" E	120.00
61	S 89° 57' 30" E	120.00
62	S 89° 57' 30" E	120.00
63	S 89° 57' 30" E	120.00
64	S 89° 57' 30" E	120.00
65	S 89° 57' 30" E	120.00
66	S 89° 57' 30" E	120.00
67	S 89° 57' 30" E	120.00
68	S 89° 57' 30" E	120.00
69	S 89° 57' 30" E	120.00
70	S 89° 57' 30" E	120.00
71	S 89° 57' 30" E	120.00
72	S 89° 57' 30" E	120.00
73	S 89° 57' 30" E	120.00
74	S 89° 57' 30" E	120.00
75	S 89° 57' 30" E	120.00
76	S 89° 57' 30" E	120.00
77	S 89° 57' 30" E	120.00
78	S 89° 57' 30" E	120.00
79	S 89° 57' 30" E	120.00
80	S 89° 57' 30" E	120.00
81	S 89° 57' 30" E	120.00
82	S 89° 57' 30" E	120.00
83	S 89° 57' 30" E	120.00
84	S 89° 57' 30" E	120.00
85	S 89° 57' 30" E	120.00
86	S 89° 57' 30" E	120.00
87	S 89° 57' 30" E	120.00
88	S 89° 57' 30" E	120.00
89	S 89° 57' 30" E	120.00
90	S 89° 57' 30" E	120.00
91	S 89° 57' 30" E	120.00
92	S 89° 57' 30" E	120.00
93	S 89° 57' 30" E	120.00
94	S 89° 57' 30" E	120.00
95	S 89° 57' 30" E	120.00
96	S 89° 57' 30" E	120.00
97	S 89° 57' 30" E	120.00
98	S 89° 57' 30" E	120.00
99	S 89° 57' 30" E	120.00
100	S 89° 57' 30" E	120.00

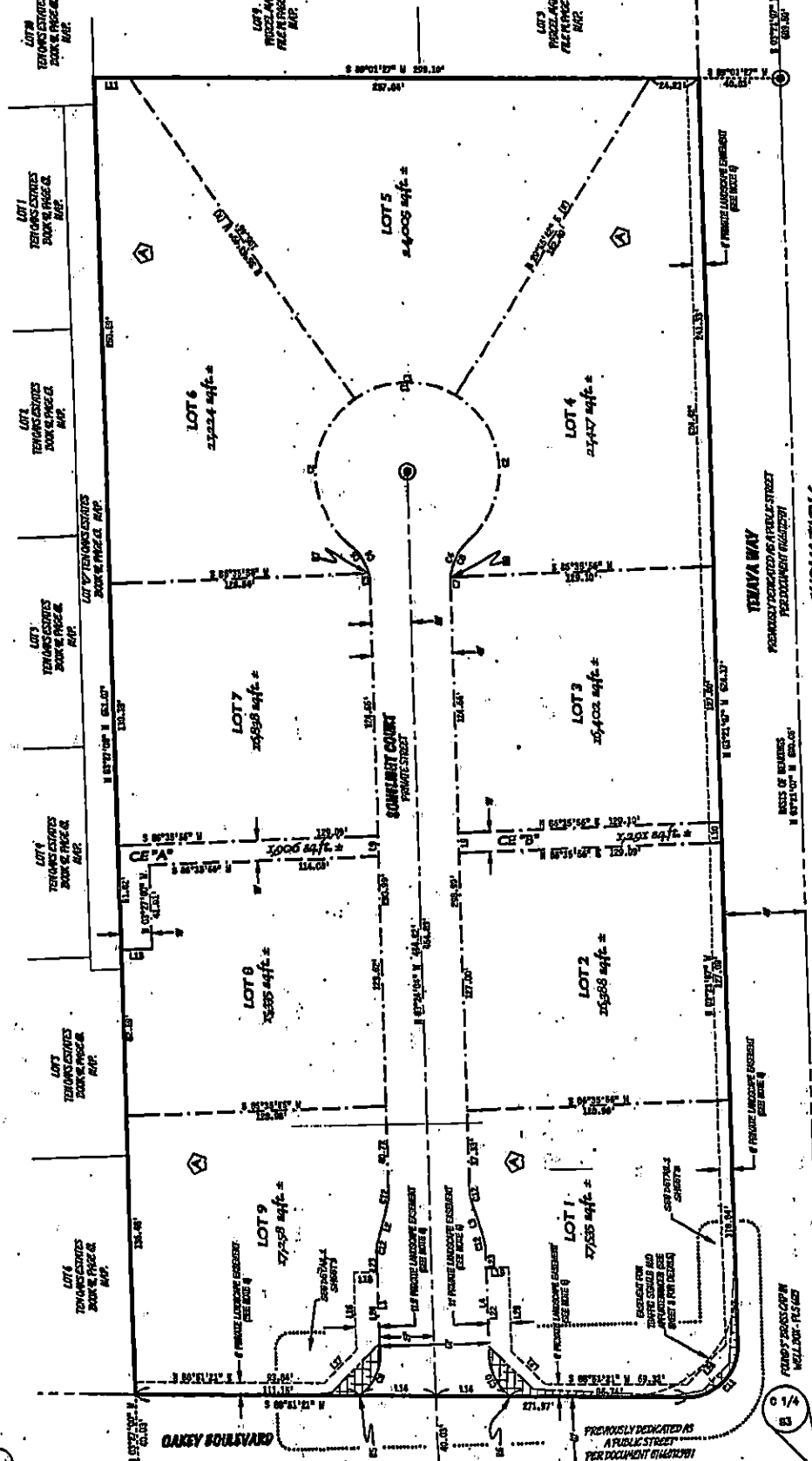
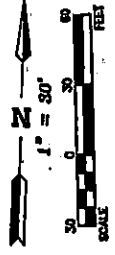
LINE TABLE

LINE	BEARING	DISTANCE
1	S 89° 57' 30" E	120.00
2	S 89° 57' 30" E	120.00
3	S 89° 57' 30" E	120.00
4	S 89° 57' 30" E	120.00
5	S 89° 57' 30" E	120.00
6	S 89° 57' 30" E	120.00
7	S 89° 57' 30" E	120.00
8	S 89° 57' 30" E	120.00
9	S 89° 57' 30" E	120.00
10	S 89° 57' 30" E	120.00
11	S 89° 57' 30" E	120.00
12	S 89° 57' 30" E	120.00
13	S 89° 57' 30" E	120.00
14	S 89° 57' 30" E	120.00
15	S 89° 57' 30" E	120.00
16	S 89° 57' 30" E	120.00
17	S 89° 57' 30" E	120.00
18	S 89° 57' 30" E	120.00
19	S 89° 57' 30" E	120.00
20	S 89° 57' 30" E	120.00
21	S 89° 57' 30" E	120.00
22	S 89° 57' 30" E	120.00
23	S 89° 57' 30" E	120.00
24	S 89° 57' 30" E	120.00
25	S 89° 57' 30" E	120.00
26	S 89° 57' 30" E	120.00
27	S 89° 57' 30" E	120.00
28	S 89° 57' 30" E	120.00
29	S 89° 57' 30" E	120.00
30	S 89° 57' 30" E	120.00
31	S 89° 57' 30" E	120.00
32	S 89° 57' 30" E	120.00
33	S 89° 57' 30" E	120.00
34	S 89° 57' 30" E	120.00
35	S 89° 57' 30" E	120.00
36	S 89° 57' 30" E	120.00
37	S 89° 57' 30" E	120.00
38	S 89° 57' 30" E	120.00
39	S 89° 57' 30" E	120.00
40	S 89° 57' 30" E	120.00
41	S 89° 57' 30" E	120.00
42	S 89° 57' 30" E	120.00
43	S 89° 57' 30" E	120.00
44	S 89° 57' 30" E	120.00
45	S 89° 57' 30" E	120.00
46	S 89° 57' 30" E	120.00
47	S 89° 57' 30" E	120.00
48	S 89° 57' 30" E	120.00
49	S 89° 57' 30" E	120.00
50	S 89° 57' 30" E	120.00
51	S 89° 57' 30" E	120.00
52	S 89° 57' 30" E	120.00
53	S 89° 57' 30" E	120.00
54	S 89° 57' 30" E	120.00
55	S 89° 57' 30" E	120.00
56	S 89° 57' 30" E	120.00
57	S 89° 57' 30" E	120.00
58	S 89° 57' 30" E	120.00
59	S 89° 57' 30" E	120.00
60	S 89° 57' 30" E	120.00
61	S 89° 57' 30" E	120.00
62	S 89° 57' 30" E	120.00
63	S 89° 57' 30" E	120.00
64	S 89° 57' 30" E	120.00
65	S 89° 57' 30" E	120.00
66	S 89° 57' 30" E	120.00
67	S 89° 57' 30" E	120.00
68	S 89° 57' 30" E	120.00
69	S 89° 57' 30" E	120.00
70	S 89° 57' 30" E	120.00
71	S 89° 57' 30" E	120.00
72	S 89° 57' 30" E	120.00
73	S 89° 57' 30" E	120.00
74	S 89° 57' 30" E	120.00
75	S 89° 57' 30" E	120.00
76	S 89° 57' 30" E	120.00
77	S 89° 57' 30" E	120.00
78	S 89° 57' 30" E	120.00
79	S 89° 57' 30" E	120.00
80	S 89° 57' 30" E	120.00
81	S 89° 57' 30" E	120.00
82	S 89° 57' 30" E	120.00
83	S 89° 57' 30" E	120.00
84	S 89° 57' 30" E	120.00
85	S 89° 57' 30" E	120.00
86	S 89° 57' 30" E	120.00
87	S 89° 57' 30" E	120.00
88	S 89° 57' 30" E	120.00
89	S 89° 57' 30" E	120.00
90	S 89° 57' 30" E	120.00
91	S 89° 57' 30" E	120.00
92	S 89° 57' 30" E	120.00
93	S 89° 57' 30" E	120.00
94	S 89° 57' 30" E	120.00
95	S 89° 57' 30" E	120.00
96	S 89° 57' 30" E	120.00
97	S 89° 57' 30" E	120.00
98	S 89° 57' 30" E	120.00
99	S 89° 57' 30" E	120.00
100	S 89° 57' 30" E	120.00

LOT COUNT
 9 SINGLE FAMILY LOTS
 2 COMMON ELEMENTS

MAP REFERENCES
 PREVIOUSLY DESIGNATED AS PER DOCUMENT 11440
 PREVIOUSLY DESIGNATED AS PER DOCUMENT 11440

WATCH DESIGNATOR
 WITH THE SURVEY, DESIGNATION ZONE
 WITH THE SURVEY, SHEET 3



SWATCHES & REPERMITS
 INCLUDE FEET MORE DE LINES
 NOT A PART OF THIS SUBDIVISION
 BLOCK DESIGNATOR
 LINE TABLE DESIGNATOR
 RADIAL TABLE DESIGNATOR
 INDICATED LINE IS RADIAL TO CURVE
 COMMON ELEMENT

CURVE TABLE

LINE	BEARING	DISTANCE	CHORD BEARING	CHORD DISTANCE	ARC DISTANCE
1	S 89° 57' 30" E	120.00	S 89° 57' 30" E	120.00	120.00
2	S 89° 57' 30" E	120.00	S 89° 57' 30" E	120.00	120.00
3	S 89° 57' 30" E	120.00	S 89° 57' 30" E	120.00	120.00
4	S 89° 57' 30" E	120.00	S 89° 57' 30" E	120.00	120.00
5	S 89° 57' 30" E	120.00	S 89° 57' 30" E	120.00	120.00
6	S 89° 57' 30" E	120.00	S 89° 57' 30" E	120.00	120.00
7	S 89° 57' 30" E	120.00	S 89° 57' 30" E	120.00	120.00
8	S 89° 57' 30" E	120.00	S 89° 57' 30" E	120.00	120.00
9	S 89° 57' 30" E	120.00	S 89° 57' 30" E	120.00	120.00
10	S 89° 57' 30" E	120.00	S 89° 57' 30" E	120.00	120.00
11	S 89° 57' 30" E	120.00	S 89° 57' 30" E	120.00	120.00
12	S 89° 57' 30" E	120.00	S 89° 57' 30" E	120.00	120.00
13	S 89° 57' 30" E	120.00	S 89° 57' 30" E	120.00	120.00
14	S 89° 57' 30" E	120.00	S 89° 57' 30" E	120.00	120.00
15	S 89° 57' 30" E	120.00	S 89° 57' 30" E	120.00	120.00
16	S 89° 57' 30" E	120.00	S 89° 57' 30" E	120.00	120.00
17	S 89° 57' 30" E	120.00	S 89° 57' 30" E	120.00	120.00
18	S 89° 57' 30" E	120.00	S 89° 57' 30" E	120.00	120.00
19	S 89° 57' 30" E	120.00	S 89° 57' 30" E	120.00	120.00
20	S 89° 57' 30" E	120.00	S 89° 57' 30" E	120.00	120.00
21	S 89° 57' 30" E	120.00	S 89° 57' 30" E	120.00	120.00
22	S 89° 57' 30" E	120.00	S 89° 57' 30" E	120.00	120.00
23	S 89° 57' 30" E	120.00	S 89° 57' 30" E	120.00	120.00
24	S 89° 57' 30" E	120.00	S 89° 57' 30" E	120.00	120.00
25	S 89° 57' 30" E	120.00	S 89° 57' 30" E	120.00	120.00
26	S 89° 57' 30" E	120.00	S 89° 57' 30" E	120.00	120.00
27	S 89° 57' 30" E	120.00	S 89° 57' 30" E	120.00	120.00
28	S 89° 57' 30" E	120.00	S 89° 57' 30" E	120.00	120.00
29	S 89° 57' 30" E	120.00	S 89° 57' 30" E	120.00	120.00
30	S 89° 57' 30" E	120.00	S 89° 57' 30" E	120.00	120.00
31	S 89° 57' 30" E	120.00	S 89° 57' 30" E	120.00	