

# SKY POINTE BY RYLAND HOMES UNIT 3

Recorded in Book 148 Page 072 of Plats

MASTER SITE ADDRESS: 7120 SKY POINTE DR

---

Fire Department District Map Number:

01517-12

---

<u>Block</u>	<u>Lot</u>	<u>Address</u>
1	42	8299 NEBULA CLOUD AVE
	43	8295
	44	8291
	45	8287
	46	8283
	47	8279
	48	8275
	49	8271
	50	8267
	51	8263
	52	8255
	53	8251
	54	8247
	55	8243
	56	8239
	57	8235
	58	7141 ORION BANDS ST
	60	8220 NEBULA CLOUD AVE
	61	8224
	62	8228
	63	8232
	64	8236
	65	8240
	66	8244
	67	8248
	68	8252
	69	8256
	70	8260
	71	8264
	72	8268

# SKY POINTE BY RYLAND HOMES UNIT 3

Recorded in Book 148 Page 072 of Plats

MASTER SITE ADDRESS: 7120 SKY POINTE DR

---

Fire Department District Map Number:

01517-12

---

<u>Block</u>	<u>Lot</u>	<u>Address</u>
1	73	8272 NEBULA CLOUD AVE
	74	8276
	75	8280
	76	8284
	77	8288
	78	8292
	79	8296
	80	8300
	81	8304
	82	8308

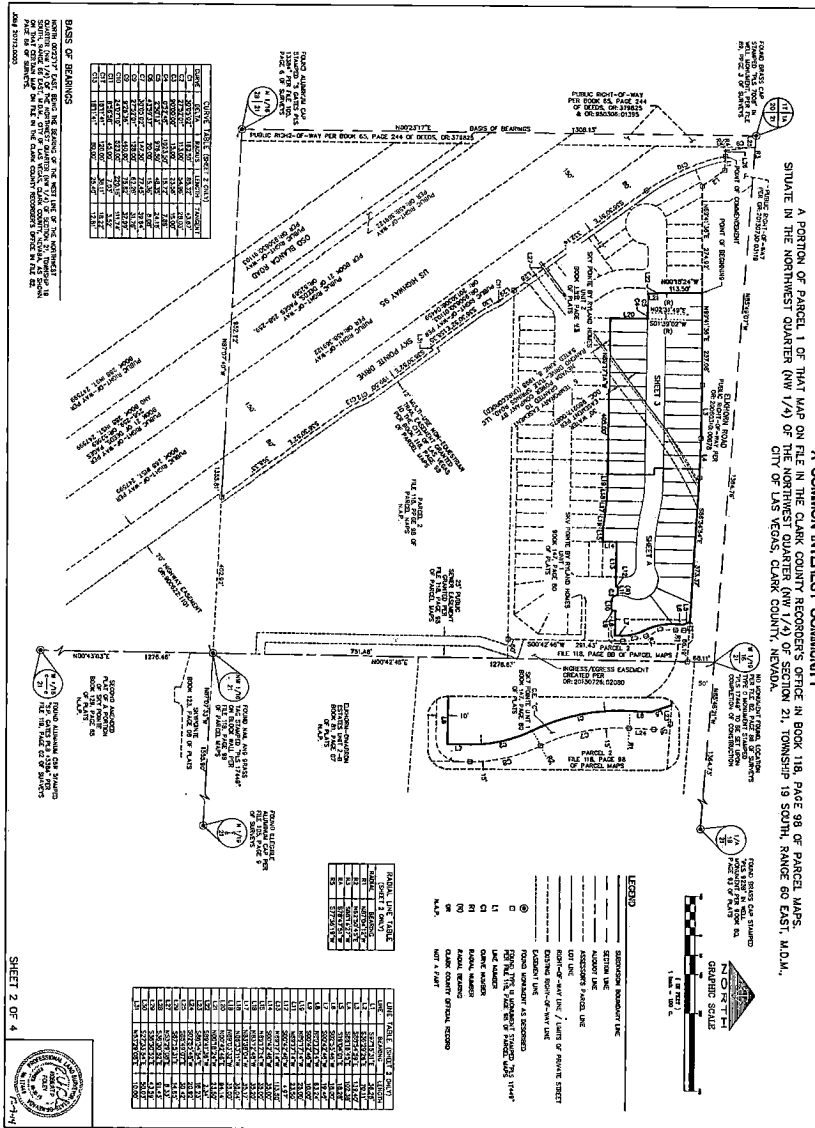


Jim Marshall, Senior Planner



# FINAL MAP OF SKY POINTE BY RYLAND HOMES UNIT 3

A PORTION OF PARCEL 1 OF THAT MAP OR FILE IN THE CLARK COUNTY RECORDER'S OFFICE IN BOOK 118, PAGE 98 OF PLACED MAPS, SITUATE IN THE NORTHEAST QUARTER (NW 1/4) OF SECTION 21, TOWNSHIP 19 SOUTH, RANGE 60 EAST, M.D.M., CITY OF LAS VEGAS, CLARK COUNTY, NEVADA.



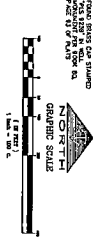
NO.	AREA	AREA (SQ. FT.)	AREA (SQ. YD.)
1	ROAD BRASSY CREEK	1,200,000	27,450
2	US HIGHWAY 95	1,500,000	34,300
3	RANGE ROAD	1,000,000	22,900
4	SKY POINTE BY RYLAND HOMES UNIT 3	1,000,000	22,900
5	SKY POINTE BY RYLAND HOMES UNIT 3	1,000,000	22,900
6	SKY POINTE BY RYLAND HOMES UNIT 3	1,000,000	22,900
7	SKY POINTE BY RYLAND HOMES UNIT 3	1,000,000	22,900
8	SKY POINTE BY RYLAND HOMES UNIT 3	1,000,000	22,900
9	SKY POINTE BY RYLAND HOMES UNIT 3	1,000,000	22,900
10	SKY POINTE BY RYLAND HOMES UNIT 3	1,000,000	22,900

**BASES OF MEASUREMENTS**

BEING THE RECORDS OF THE CLARK COUNTY RECORDER'S OFFICE IN BOOK 118, PAGE 98 OF PLACED MAPS, SITUATE IN THE NORTHEAST QUARTER (NW 1/4) OF SECTION 21, TOWNSHIP 19 SOUTH, RANGE 60 EAST, M.D.M., CITY OF LAS VEGAS, CLARK COUNTY, NEVADA.

AND THE RECORDS OF THE CLARK COUNTY RECORDER'S OFFICE IN THE CITY OF LAS VEGAS, CLARK COUNTY, NEVADA.

AND THE RECORDS OF THE CLARK COUNTY RECORDER'S OFFICE IN THE CITY OF LAS VEGAS, CLARK COUNTY, NEVADA.



- LEGEND**
- SECTION BOUNDARY LINE
  - SECTION LINE
  - ADJACENT'S PARCEL LINE
  - ROAD-OF-WAY LINE / LIMIT OF PAVED STREET
  - LOT LINE
  - EASEMENT LINE
  - PROPERTY LINE AS SHOWN ON THE RECORDS OF THE CLARK COUNTY RECORDER'S OFFICE IN THE CITY OF LAS VEGAS, CLARK COUNTY, NEVADA
  - LOT NUMBER
  - LOT AREA
  - ROAD, RAILROAD, CANAL, RIVER, STREAM, ETC.
  - CLARK COUNTY OFFICIAL RECORDS
  - LOT # 1000

NO.	AREA	AREA (SQ. FT.)	AREA (SQ. YD.)
1	ROAD BRASSY CREEK	1,200,000	27,450
2	US HIGHWAY 95	1,500,000	34,300
3	RANGE ROAD	1,000,000	22,900
4	SKY POINTE BY RYLAND HOMES UNIT 3	1,000,000	22,900
5	SKY POINTE BY RYLAND HOMES UNIT 3	1,000,000	22,900
6	SKY POINTE BY RYLAND HOMES UNIT 3	1,000,000	22,900
7	SKY POINTE BY RYLAND HOMES UNIT 3	1,000,000	22,900
8	SKY POINTE BY RYLAND HOMES UNIT 3	1,000,000	22,900
9	SKY POINTE BY RYLAND HOMES UNIT 3	1,000,000	22,900
10	SKY POINTE BY RYLAND HOMES UNIT 3	1,000,000	22,900

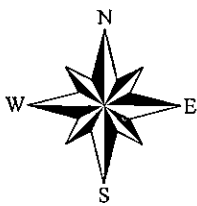
NO.	AREA	AREA (SQ. FT.)	AREA (SQ. YD.)
1	ROAD BRASSY CREEK	1,200,000	27,450
2	US HIGHWAY 95	1,500,000	34,300
3	RANGE ROAD	1,000,000	22,900
4	SKY POINTE BY RYLAND HOMES UNIT 3	1,000,000	22,900
5	SKY POINTE BY RYLAND HOMES UNIT 3	1,000,000	22,900
6	SKY POINTE BY RYLAND HOMES UNIT 3	1,000,000	22,900
7	SKY POINTE BY RYLAND HOMES UNIT 3	1,000,000	22,900
8	SKY POINTE BY RYLAND HOMES UNIT 3	1,000,000	22,900
9	SKY POINTE BY RYLAND HOMES UNIT 3	1,000,000	22,900
10	SKY POINTE BY RYLAND HOMES UNIT 3	1,000,000	22,900

SHEET 2 OF 4

BK 148 Pg 07a

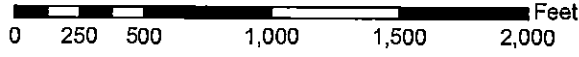




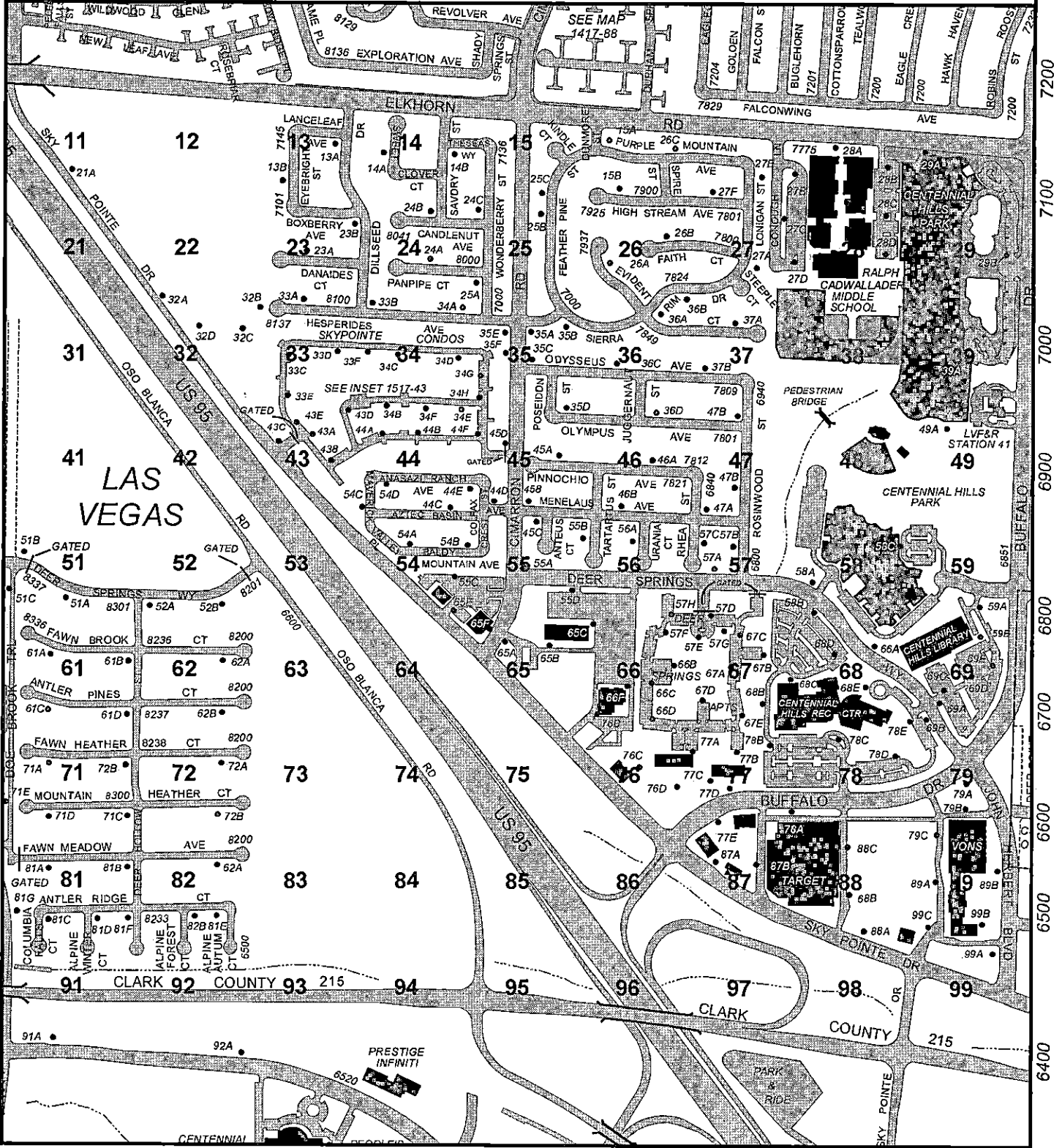


# 1517

© City of Las Vegas 06/02/14



1416	1417	1418
1516	1517	1518
1616	1617	1618



8400 8300 8000 7900 7800 7600

6400 6500 6600 6700 6800 6900 7000 7100 7200