

LEVITZ PLAZA
LAS VEGAS, NEVADA

71

LEVITZ PLAZA II

M-33-2

71 MARTIN L. KING BOULEVARD
JANUARY 21, 1992


- SPACE A 1425
- B 1433
- C 1441
- D 1401
- E 1409
- F 1417

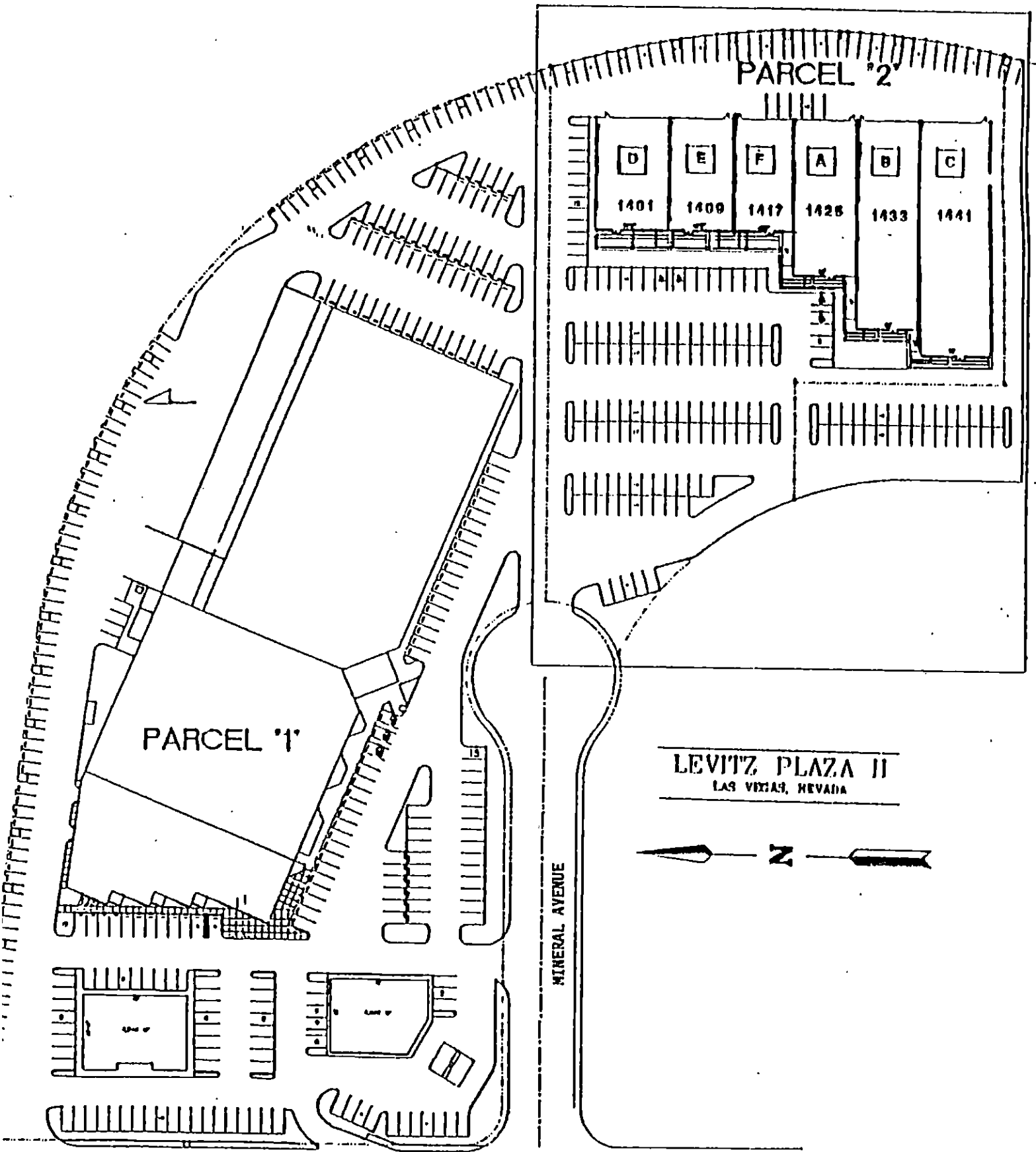
MINERAL AVENUE

E/W PUBLIC STREET

Note: the General Site Address is 71 Martin L. King Boulevard.

CITY OF LAS VEGAS
DEPARTMENT OF COMMUNITY
PLANNING & DEVELOPMENT

 JOHN B. HERBERT, PLANNING ASSISTANT



LEVITZ PLAZA
LAS VEGAS, NEVADA

71 MARTIN L. KING BOULEVARD
JANUARY 21, 1992

LEVITZ PLAZA II

M-33-2


SPACE A	1425
B	1433
C	1441
D	1401
E	1409
F	1417

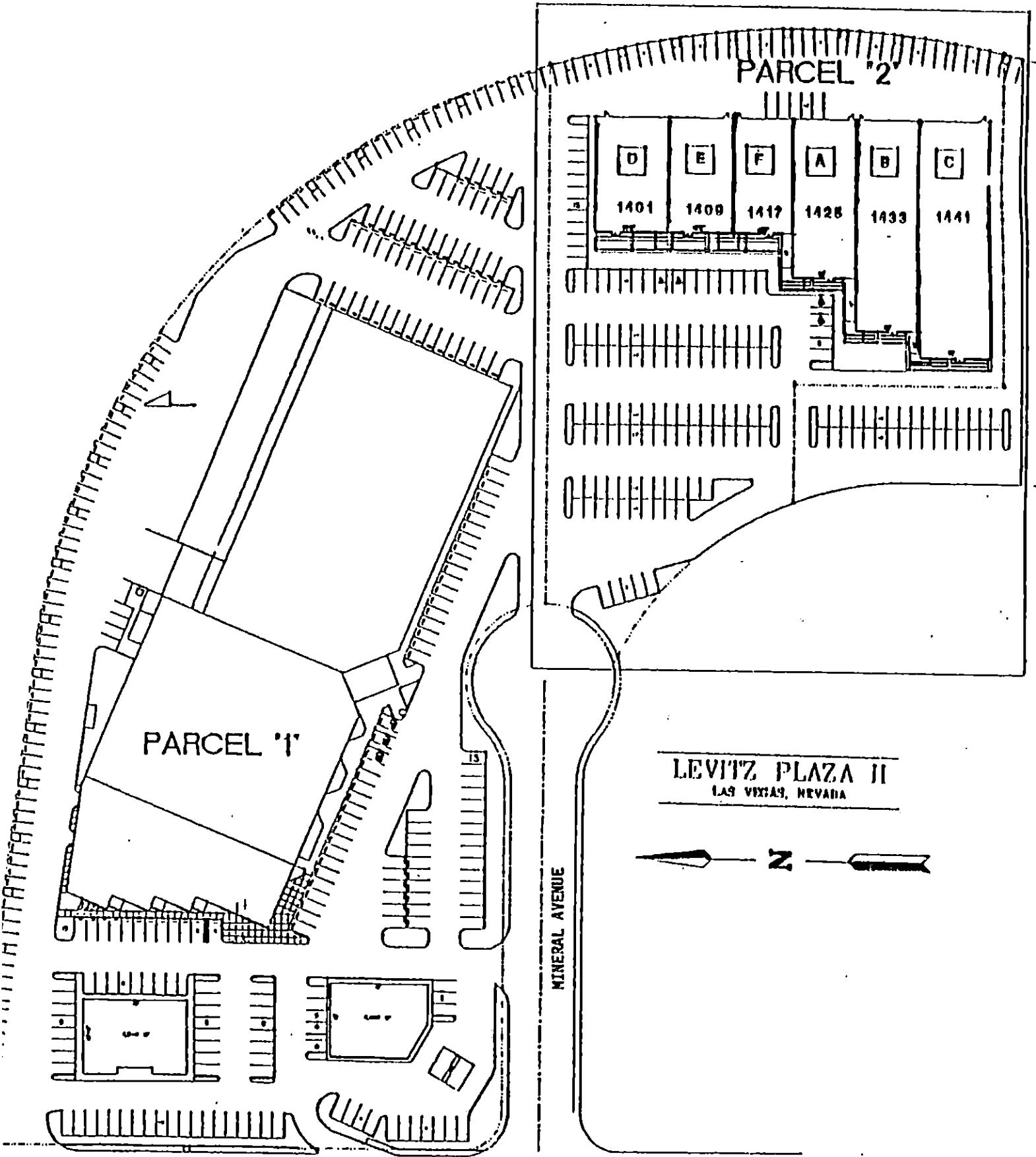
MINERAL AVENUE

E/W PUBLIC STREET

Note: the General Site Address is 71 Martin L. King Boulevard.

CITY OF LAS VEGAS
DEPARTMENT OF COMMUNITY
PLANNING & DEVELOPMENT

 JOHN B. HERBERT, PLANNING ASSISTANT



LEVITZ PLAZA
LAS VEGAS, NEVADA

71

71 MARTIN L. KING BOULEVARD
JANUARY 21, 1992

LEVITZ PLAZA II
LAS VEGAS, NEVADA



MINERAL AVENUE

LEVITZ PLAZA II

M-33-2


SPACE A	1425
B	1433
C	1441
D	1401
E	1409
F	1417

MINERAL AVENUE

E/W PUBLIC STREET

Note: the General Site Address is 71 Martin L. King Boulevard.

CITY OF LAS VEGAS
DEPARTMENT OF COMMUNITY
PLANNING & DEVELOPMENT

 JOHN B. HERBERT, PLANNING ASSISTANT