

MOUNTAINEER UNIT 3 AT ELKHORN SPRINGS

Recorded in Book 78 Page 61 of Plats

200 Scale Map Location: G-21-2

Fire Dept. District Map # 1517:27

MASTER SITE ADDRESS: 7007 CONOUGH LN

BLOCK 1	LOT	23	7112	LONIGAN ST	N/S	PUBLIC STREET
		24	7108			
		25	7104			
		26	7100			
BLOCK 1	LOT	27	7008	STEEPLE CT	N/S	PUBLIC STREET
		28	7004			
		29	7000			
		30	7001			
		31	7005			
		32	7009			
BLOCK 1	LOT	33	7805	SIERRA RIM DR	EW	PUBLIC STREET
		34	7809			
		35	7813			
		36	7817			
		37	7825			
BLOCK 1	LOT	39	7832	EVIDENT CT	EW	PUBLIC STREET
		40	7828			
		41	7824			
		42	7820			
		43	7816			
		44	7812			
		45	7808			
		46	7804			
		47	7800			
		48	7801			
		49	7805			
		50	7809			
		51	7813			
		52	7817			
		53	7821			
		54	7825			
		55	7829			
		56	7833			
		57	7837			
		58	7841			
BLOCK 4	LOT	131	7800	FAITH CT	EW	PUBLIC STREET
		132	7804			
		133	7808			
		134	7812			
		135	7816			
		136	7820			
		137	7824			
		138	7828			
		139	7832			
		140	7836			
		141	7840			
		142	7841			
		143	7837			
		144	7833			
		145	7829			

MOUNTAINEER UNIT 3 AT ELKHORN SPRINGS

Recorded in Book 78 Page 61 of Plats

200 Scale Map Location: G-21-2

Fire Dept. District Map # 1517:27

MASTER SITE ADDRESS: 7007 CONOUGH LN

BLOCK 1	LOT	23	7112	LONIGAN ST	N/S	PUBLIC STREET
		24	7108			
		25	7104			
		26	7100			
BLOCK 1	LOT	27	7008	STEEPLE CT	N/S	PUBLIC STREET
		28	7004			
		29	7000			
		30	7001			
		31	7005			
		32	7009			
BLOCK 1	LOT	33	7805	SIERRA RIM DR	E/W	PUBLIC STREET
		34	7809			
		35	7813			
		36	7817			
		37	7825			
BLOCK 1	LOT	39	7832	EVIDENT CT	E/W	PUBLIC STREET
		40	7828			
		41	7824			
		42	7820			
		43	7816			
		44	7812			
		45	7808			
		46	7804			
		47	7800			
		48	7801			
		49	7805			
		50	7809			
		51	7813			
		52	7817			
		53	7821			
		54	7825			
		55	7829			
		56	7833			
		57	7837			
		58	7841			
BLOCK 4	LOT	131	7800	FAITH CT	E/W	PUBLIC STREET
		132	7804			
		133	7808			
		134	7812			
		135	7816			
		136	7820			
		137	7824			
		138	7828			
		139	7832			
		140	7836			
		141	7840			
		142	7841			
		143	7837			
		144	7833			
		145	7829			

MOUNTAINAIRE UNIT 3 AT ELKHORN SPKINGS

Recorded in Book 78 Page 61 of Plats

200 Scale Map Location: G-21-2

Fire Dept. District Map # 1517:27

MASTER SITE ADDRESS: 7007 CONOUGH LN

BLOCK 1	LOT	23	7112	LONIGAN ST	N/S	PUBLIC STREET
		24	7108			
		25	7104			
		26	7100			
BLOCK 1	LOT	27	7008	STEEPLE CT	N/S	PUBLIC STREET
		28	7004			
		29	7000			
		30	7001			
		31	7005			
		32	7009			
BLOCK 1	LOT	33	7805	SIERRA RIM DR	E/W	PUBLIC STREET
		34	7809			
		35	7813			
		36	7817			
		37	7825			
BLOCK 1	LOT	39	7832	EVIDENT CT	E/W	PUBLIC STREET
		40	7828			
		41	7824			
		42	7820			
		43	7816			
		44	7812			
		45	7808			
		46	7804			
		47	7800			
		48	7801			
		49	7805			
		50	7809			
		51	7813			
		52	7817			
		53	7821			
		54	7825			
		55	7829			
		56	7833			
		57	7837			
		58	7841			
BLOCK 4	LOT	131	7800	FAITH CT	E/W	PUBLIC STREET
		132	7804			
		133	7808			
		134	7812			
		135	7816			
		136	7820			
		137	7824			
		138	7828			
		139	7832			
		140	7836			
		141	7840			
		142	7841			
		143	7837			
		144	7833			
		145	7829			

MOUNTAINEIRE UNIT 3 AT ELKHORN SPKINGS

Recorded in Book 78 Page 61 of Plats

200 Scale Map Location: G-21-2

Fire Dept. District Map # 1517:27

MASTER SITE ADDRESS: 7007 CONOUGH LN

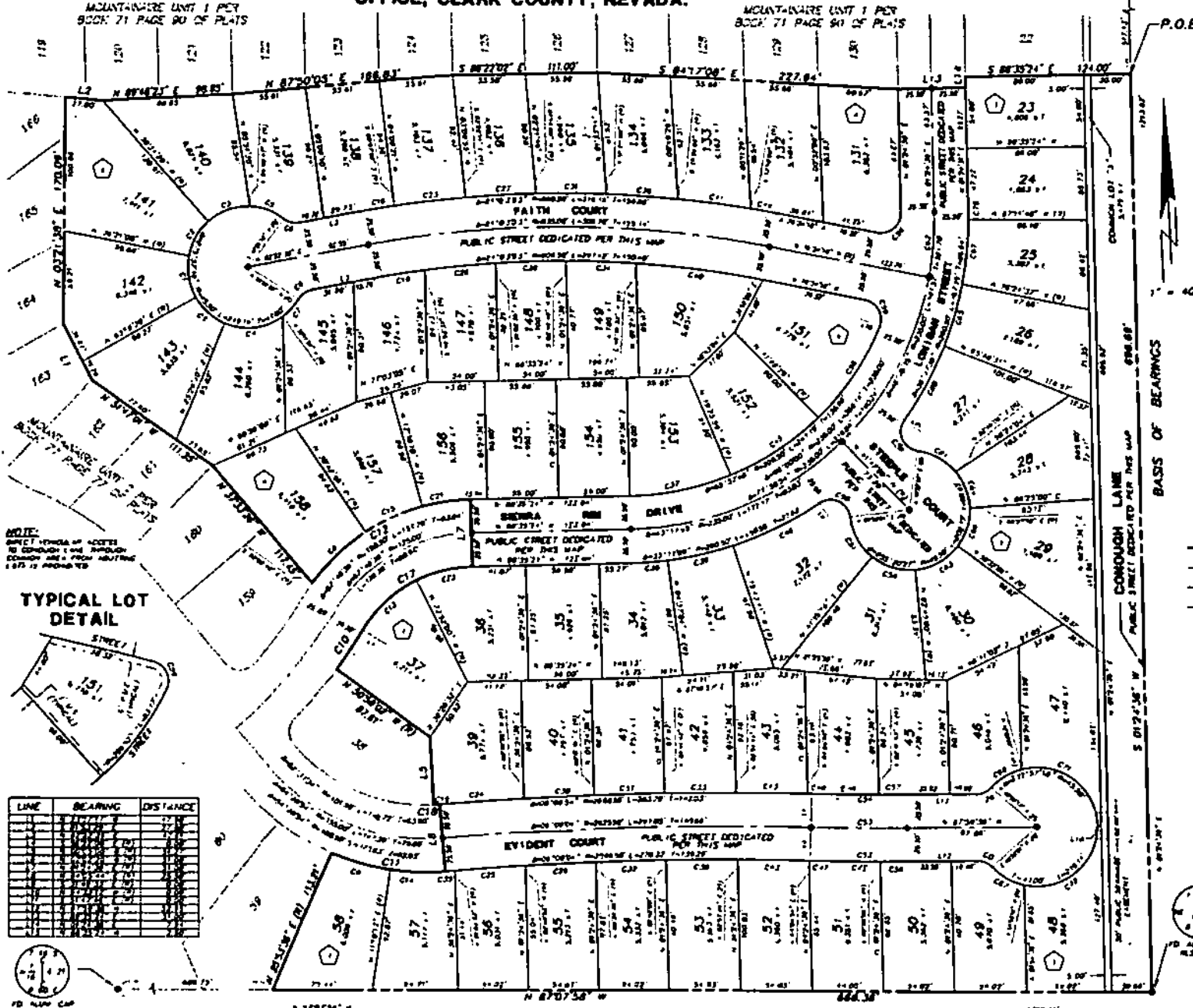
BLOCK 1	LOT	23	7112	LONIGAN ST	N/S	PUBLIC STREET
		24	7108			
		25	7104			
		26	7100			
BLOCK 1	LOT	27	7008	STEEPLE CT	N/S	PUBLIC STREET
		28	7004			
		29	7000			
		30	7001			
		31	7005			
		32	7009			
BLOCK 1	LOT	33	7805	SIERRA RIM DR	E/W	PUBLIC STREET
		34	7809			
		35	7813			
		36	7817			
		37	7825			
BLOCK 1	LOT	39	7832	EVIDENT CT	E/W	PUBLIC STREET
		40	7828			
		41	7824			
		42	7820			
		43	7816			
		44	7812			
		45	7808			
		46	7804			
		47	7800			
		48	7801			
		49	7805			
		50	7809			
		51	7813			
		52	7817			
		53	7821			
		54	7825			
		55	7829			
		56	7833			
		57	7837			
		58	7841			
BLOCK 4	LOT	131	7800	FAITH CT	E/W	PUBLIC STREET
		132	7804			
		133	7808			
		134	7812			
		135	7816			
		136	7820			
		137	7824			
		138	7828			
		139	7832			
		140	7836			
		141	7840			
		142	7841			
		143	7837			
		144	7833			
		145	7829			

MountainAire Unit 3 At Elkhorn Springs

A SUBDIVISION OF A PORTION OF THE NORTHWEST QUARTER (NW 1/4) OF THE NORTHEAST QUARTER (NE 1/4) OF SECTION 21 TOWNSHIP 18 SOUTH, RANGE 80 EAST, M.D.M., CLARK COUNTY, NEVADA, AS SHOWN BY MAP ON FILE, IN FILE 83 PAGE 40 OF SURVEY IN THE CLARK COUNTY RECORDER'S OFFICE, CLARK COUNTY, NEVADA.



CURVE	DELTA	RADIUS	LENGTH	TANGENT
1	111.00'	111.00'	111.00'	111.00'
2	111.00'	111.00'	111.00'	111.00'
3	111.00'	111.00'	111.00'	111.00'
4	111.00'	111.00'	111.00'	111.00'
5	111.00'	111.00'	111.00'	111.00'
6	111.00'	111.00'	111.00'	111.00'
7	111.00'	111.00'	111.00'	111.00'
8	111.00'	111.00'	111.00'	111.00'
9	111.00'	111.00'	111.00'	111.00'
10	111.00'	111.00'	111.00'	111.00'
11	111.00'	111.00'	111.00'	111.00'
12	111.00'	111.00'	111.00'	111.00'
13	111.00'	111.00'	111.00'	111.00'
14	111.00'	111.00'	111.00'	111.00'
15	111.00'	111.00'	111.00'	111.00'
16	111.00'	111.00'	111.00'	111.00'
17	111.00'	111.00'	111.00'	111.00'
18	111.00'	111.00'	111.00'	111.00'
19	111.00'	111.00'	111.00'	111.00'
20	111.00'	111.00'	111.00'	111.00'
21	111.00'	111.00'	111.00'	111.00'
22	111.00'	111.00'	111.00'	111.00'
23	111.00'	111.00'	111.00'	111.00'
24	111.00'	111.00'	111.00'	111.00'
25	111.00'	111.00'	111.00'	111.00'
26	111.00'	111.00'	111.00'	111.00'
27	111.00'	111.00'	111.00'	111.00'
28	111.00'	111.00'	111.00'	111.00'
29	111.00'	111.00'	111.00'	111.00'
30	111.00'	111.00'	111.00'	111.00'
31	111.00'	111.00'	111.00'	111.00'
32	111.00'	111.00'	111.00'	111.00'
33	111.00'	111.00'	111.00'	111.00'
34	111.00'	111.00'	111.00'	111.00'
35	111.00'	111.00'	111.00'	111.00'
36	111.00'	111.00'	111.00'	111.00'
37	111.00'	111.00'	111.00'	111.00'
38	111.00'	111.00'	111.00'	111.00'
39	111.00'	111.00'	111.00'	111.00'
40	111.00'	111.00'	111.00'	111.00'
41	111.00'	111.00'	111.00'	111.00'
42	111.00'	111.00'	111.00'	111.00'
43	111.00'	111.00'	111.00'	111.00'
44	111.00'	111.00'	111.00'	111.00'
45	111.00'	111.00'	111.00'	111.00'
46	111.00'	111.00'	111.00'	111.00'
47	111.00'	111.00'	111.00'	111.00'
48	111.00'	111.00'	111.00'	111.00'
49	111.00'	111.00'	111.00'	111.00'
50	111.00'	111.00'	111.00'	111.00'
51	111.00'	111.00'	111.00'	111.00'
52	111.00'	111.00'	111.00'	111.00'
53	111.00'	111.00'	111.00'	111.00'
54	111.00'	111.00'	111.00'	111.00'
55	111.00'	111.00'	111.00'	111.00'
56	111.00'	111.00'	111.00'	111.00'
57	111.00'	111.00'	111.00'	111.00'
58	111.00'	111.00'	111.00'	111.00'
59	111.00'	111.00'	111.00'	111.00'
60	111.00'	111.00'	111.00'	111.00'



NOTE: BENCH MARKS SHOWN ON THIS MAP TO BE USED IN CONNECTION WITH THIS MAP. BENCH MARKS ARE NOT TO BE USED AS A BASIS OF BEARINGS.

TYPICAL LOT DETAIL

LINE	BEARING	DISTANCE
1	N 87° 20' 00" E	186.81'
2	S 87° 27' 00" E	111.00'
3	N 87° 20' 00" E	186.81'
4	S 87° 27' 00" E	111.00'
5	N 87° 20' 00" E	186.81'
6	S 87° 27' 00" E	111.00'
7	N 87° 20' 00" E	186.81'
8	S 87° 27' 00" E	111.00'
9	N 87° 20' 00" E	186.81'
10	S 87° 27' 00" E	111.00'
11	N 87° 20' 00" E	186.81'
12	S 87° 27' 00" E	111.00'
13	N 87° 20' 00" E	186.81'
14	S 87° 27' 00" E	111.00'
15	N 87° 20' 00" E	186.81'
16	S 87° 27' 00" E	111.00'
17	N 87° 20' 00" E	186.81'
18	S 87° 27' 00" E	111.00'
19	N 87° 20' 00" E	186.81'
20	S 87° 27' 00" E	111.00'
21	N 87° 20' 00" E	186.81'
22	S 87° 27' 00" E	111.00'
23	N 87° 20' 00" E	186.81'
24	S 87° 27' 00" E	111.00'
25	N 87° 20' 00" E	186.81'
26	S 87° 27' 00" E	111.00'
27	N 87° 20' 00" E	186.81'
28	S 87° 27' 00" E	111.00'
29	N 87° 20' 00" E	186.81'
30	S 87° 27' 00" E	111.00'
31	N 87° 20' 00" E	186.81'
32	S 87° 27' 00" E	111.00'
33	N 87° 20' 00" E	186.81'
34	S 87° 27' 00" E	111.00'
35	N 87° 20' 00" E	186.81'
36	S 87° 27' 00" E	111.00'
37	N 87° 20' 00" E	186.81'
38	S 87° 27' 00" E	111.00'
39	N 87° 20' 00" E	186.81'
40	S 87° 27' 00" E	111.00'
41	N 87° 20' 00" E	186.81'
42	S 87° 27' 00" E	111.00'
43	N 87° 20' 00" E	186.81'
44	S 87° 27' 00" E	111.00'
45	N 87° 20' 00" E	186.81'
46	S 87° 27' 00" E	111.00'
47	N 87° 20' 00" E	186.81'
48	S 87° 27' 00" E	111.00'
49	N 87° 20' 00" E	186.81'
50	S 87° 27' 00" E	111.00'
51	N 87° 20' 00" E	186.81'
52	S 87° 27' 00" E	111.00'
53	N 87° 20' 00" E	186.81'
54	S 87° 27' 00" E	111.00'
55	N 87° 20' 00" E	186.81'
56	S 87° 27' 00" E	111.00'
57	N 87° 20' 00" E	186.81'
58	S 87° 27' 00" E	111.00'
59	N 87° 20' 00" E	186.81'
60	S 87° 27' 00" E	111.00'

LEGEND

- BOUNDARY LINE
- DRIVE / CENTERLINE
- BLOCK LINE
- LOT LINE
- 21 LINE BEARING NUMBER
- 17 CURVE BEARING NUMBER
- 1.31 LOT NUMBER
- 0.79 AREA OF LOT
- 11 BLOCK NUMBER
- FOUND MONUMENTS - BEAR AND ALUMINUM CAP STAMPED #1, 2, 3, 4, 5, 6, 7, 8, 9, 10, 11, 12, 13, 14, 15, 16, 17, 18, 19, 20, 21, 22, 23, 24, 25, 26, 27, 28, 29, 30, 31, 32, 33, 34, 35, 36, 37, 38, 39, 40, 41, 42, 43, 44, 45, 46, 47, 48, 49, 50, 51, 52, 53, 54, 55, 56, 57, 58, 59, 60 (UNLESS OTHERWISE NOTED)
- 4 SET MONUMENTS - BEAR AND ALUMINUM CAP STAMPED #1, 2, 3, 4, 5, 6, 7, 8, 9, 10, 11, 12, 13, 14, 15, 16, 17, 18, 19, 20, 21, 22, 23, 24, 25, 26, 27, 28, 29, 30, 31, 32, 33, 34, 35, 36, 37, 38, 39, 40, 41, 42, 43, 44, 45, 46, 47, 48, 49, 50, 51, 52, 53, 54, 55, 56, 57, 58, 59, 60 (UNLESS OTHERWISE NOTED)
- LOTS WILL BE MONUMENTED IN THE FRONT OF EACH BLOCK IN THE TOP OF CURVE (1) IN THE INTERSECTION OF THE SIDE LOT LINE AND IN THE REAR OF AN A, B, C, D, E, F, G, H, I, J, K, L, M, N, O, P, Q, R, S, T, U, V, W, X, Y, Z IN THE FACE OF CURVE AT THE INTERSECTION OF THE SIDE LOT LINE AND MONUMENTS ALONG THE BOUNDARY WILL BE 4" DIA BEAR AND ALUMINUM CAP STAMPED #1, 2, 3, 4, 5, 6, 7, 8, 9, 10, 11, 12, 13, 14, 15, 16, 17, 18, 19, 20, 21, 22, 23, 24, 25, 26, 27, 28, 29, 30, 31, 32, 33, 34, 35, 36, 37, 38, 39, 40, 41, 42, 43, 44, 45, 46, 47, 48, 49, 50, 51, 52, 53, 54, 55, 56, 57, 58, 59, 60 (UNLESS OTHERWISE NOTED)
- PUBLIC UTILITY Easement 10'-0" WIDE

THE KEITH COMPANIES, NEVADA

Surveyors Unit 3 SHEET 3 OF 3

42 Elkhorn Springs