

EASTON PLACE AT PROVIDENCE PHASE 2

Recorded in Book 133 Page 024 of Plats

MASTER SITE ADDRESS: 6818 SUMATRA ST

Fire Department District Map Number:

01514-52

<u>Block</u>	<u>Lot</u>	<u>Address</u>
1	6	10721 ARUSHA AVE
	7	10725
	8	10729
	9	10733
	10	10737
	11	10741
	12	10745
	13	10749
	14	10753
	15	10757
	16	10761
	17	10809
	18	10813
	19	10817
	20	10821
	21	10825
	22	10829
	23	10833
	24	10837
	25	10841
	26	10845
	27	10849
	28	10853
	29	10857
	30	10861
	31	10865
	32	10869
	33	6835 PIPIL ST
	34	6839
	35	6843

EASTON PLACE AT PROVIDENCE PHASE 2

Recorded in Book 133 Page 024 of Plats

MASTER SITE ADDRESS: 6818 SUMATRA ST

Fire Department District Map Number:

01514-52

<u>Block</u>	<u>Lot</u>	<u>Address</u>
1	36	6847 PIPIL ST
	37	6851
	38	6855
	39	6859
	40	6863
	41	6867
	42	10866 LA FLORENTINA AVE
	43	10862
	44	10858
	45	10854
	46	10850
	47	10846
	48	10842
	49	10838
	50	10834
	51	10830
	52	10826
	53	10822
	54	10818
	55	10814
	56	10810
	57	10766
	58	10762
	59	10758
	60	10754
	61	10750
	62	10746
	63	10742
	64	10738
	65	10734

EASTON PLACE AT PROVIDENCE PHASE 2

Recorded in Book 133 Page 024 of Plats

MASTER SITE ADDRESS: 6818 SUMATRA ST

Fire Department District Map Number:

01514-52

<u>Block</u>	<u>Lot</u>	<u>Address</u>
1	66	10730 LA FLORENTINA AVE
	67	10726
	68	10722
	69	10718
	70	10714
	71	10710
	72	6868 SUMATRA ST
	73	6864
	74	6860
	75	6856
	76	6852
	77	6848
	78	6844
	79	6840
	80	6836
	81	6832
	82	6828
	83	6824
	84	6820
3	89	10722 ARUSHA AVE
	90	10726
	91	10730
	92	10734
	93	10738
	94	10742
	95	10746
	96	10747 KHALUA AVE
	97	10743
	98	10739
	99	10735

EASTON PLACE AT PROVIDENCE PHASE 2

Recorded in Book 133 Page 024 of Plats

MASTER SITE ADDRESS: 6818 SUMATRA ST

Fire Department District Map Number:

01514-52

<u>Block</u>	<u>Lot</u>	<u>Address</u>
3	100	10731 KHALUA AVE
	101	10727
	102	10723
4	103	10724
	104	10728
	105	10732
	106	10736
	107	10740
	108	10744
	109	10748
	110	10745 LA FLORENTINA AVE
	111	10741
	112	10737
	113	10733
	114	10729
	115	10725
	116	10721
5	117	6833 MOSHI ST
	118	6837
	119	6841
	120	6845
	121	6849
	122	6853
	123	6857
	124	6861
	125	6865
	126	6868 QUINDIO ST
	127	6864
	128	6860
	129	6856

EASTON PLACE AT PROVIDENCE PHASE 2

Recorded in Book 133 Page 024 of Plats

MASTER SITE ADDRESS: 6818 SUMATRA ST

Fire Department District Map Number:

01514-52

<u>Block</u>	<u>Lot</u>	<u>Address</u>
5	130	6852 QUINDIO ST
	131	6848
	132	6844
	133	6840
	134	6836
6	135	6835
	136	6839
	137	6843
	138	6847
	139	6851
	140	6855
	141	6859
	142	6863
	143	6867
	144	6866 SIGRI ST
	145	6862
	146	6858
	147	6854
	148	6850
	149	6846
150	6842	
151	6838	
152	6834	
7	153	6833
	154	6837
	155	6841
	156	6845
	157	6849
	158	6853
	159	6857

EASTON PLACE AT PROVIDENCE PHASE 2

Recorded in Book 133 Page 024 of Plats

MASTER SITE ADDRESS: 6818 SUMATRA ST

Fire Department District Map Number:

01514-52

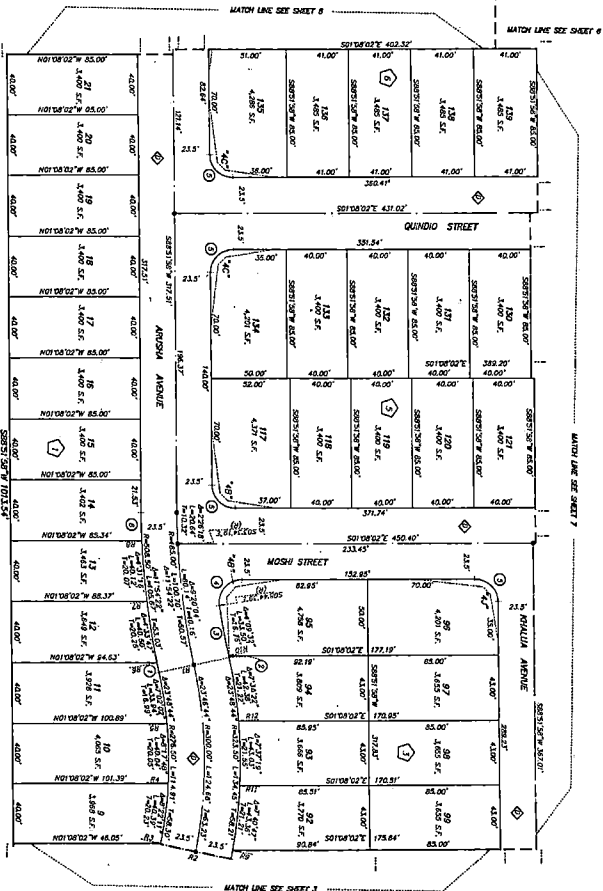
<u>Block</u>	<u>Lot</u>	<u>Address</u>
7	160	6861 SIGRI ST
	161	6865
	162	6868 PIPIL ST
	163	6864
	164	6860
	165	6856
	166	6852
	167	6848
	168	6844
	169	6840
	170	6836

Greg Kapovich, Planner I



FINAL MAP OF EASTON PLACE AT PROVIDENCE PHASE 2

A COMMON INTEREST COMMUNITY
A MERGER AND RESUBDIVISION OF LOT 303A, A PORTION OF LOT 303B, COMMON ELEMENT LOT "2", AND A PORTION OF COMMON ELEMENT LOT "4A" IN BLOCK "9" OF "CAIFFS EDGE PARENT" FILE IN BOOK 118, PAGE 88 OF PLATS IN THE CLARK COUNTY, NEVADA, RECORDER'S OFFICE, TOGETHER WITH THE WEST HALF (W 1/2) OF THE SOUTHEAST QUARTER (SE 1/4) OF THE SOUTHWEST QUARTER (SW 1/4) OF THE NORTHWEST QUARTER (NW 1/4) OF SECTION 24, TOWNSHIP 19 SOUTH, RANGE 99 EAST, R.D.M., CITY OF LAS VEGAS, CLARK COUNTY, NEVADA



"CAIFFS EDGE PARENT"
BOOK 118, PAGE 88

DATE	BY	REVISION	REVISION	REVISION
1
2
3
4
5
6
7
8
9
10

SYMBOL	DESCRIPTION
1	...
2	...
3	...
4	...
5	...
6	...
7	...
8	...
9	...
10	...

NOTES:

1. ALL LOT DIMENSIONS SHALL BE AS SHOWN ON THIS PLAN.
2. THE AREA BETWEEN THE LOT DIMENSIONS AND THE LOT AREA SHALL BE AS SHOWN ON THIS PLAN.
3. THE AREA BETWEEN THE LOT DIMENSIONS AND THE LOT AREA SHALL BE AS SHOWN ON THIS PLAN.
4. THE AREA BETWEEN THE LOT DIMENSIONS AND THE LOT AREA SHALL BE AS SHOWN ON THIS PLAN.
5. THE AREA BETWEEN THE LOT DIMENSIONS AND THE LOT AREA SHALL BE AS SHOWN ON THIS PLAN.
6. THE AREA BETWEEN THE LOT DIMENSIONS AND THE LOT AREA SHALL BE AS SHOWN ON THIS PLAN.
7. THE AREA BETWEEN THE LOT DIMENSIONS AND THE LOT AREA SHALL BE AS SHOWN ON THIS PLAN.
8. THE AREA BETWEEN THE LOT DIMENSIONS AND THE LOT AREA SHALL BE AS SHOWN ON THIS PLAN.
9. THE AREA BETWEEN THE LOT DIMENSIONS AND THE LOT AREA SHALL BE AS SHOWN ON THIS PLAN.
10. THE AREA BETWEEN THE LOT DIMENSIONS AND THE LOT AREA SHALL BE AS SHOWN ON THIS PLAN.

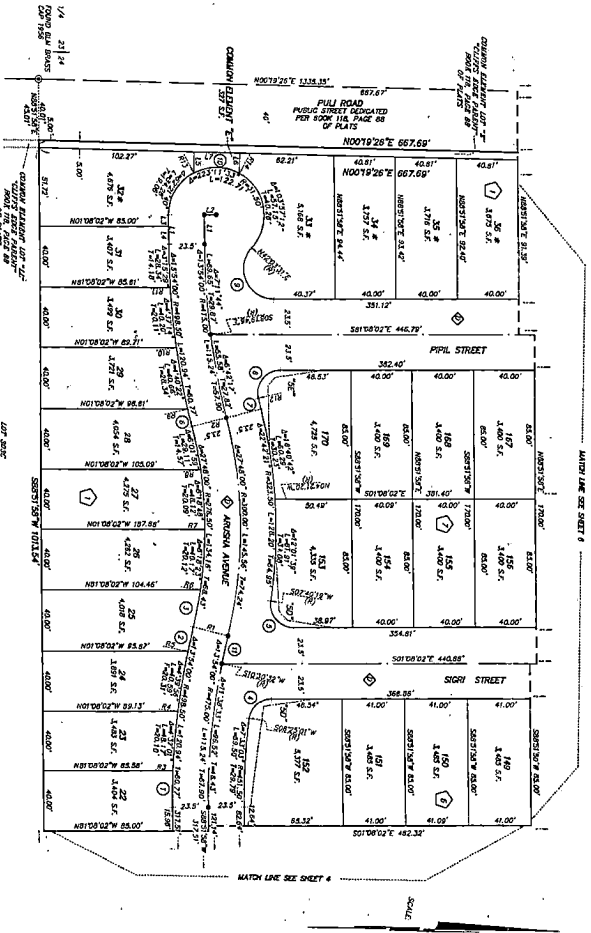
LEGEND

- 1. SEE THE COMMON INTEREST COMMUNITY (C.I.C.) PLAN FOR THE COMMON INTEREST COMMUNITY (C.I.C.)
- 2. SEE THE COMMON INTEREST COMMUNITY (C.I.C.) PLAN FOR THE COMMON INTEREST COMMUNITY (C.I.C.)
- 3. SEE THE COMMON INTEREST COMMUNITY (C.I.C.) PLAN FOR THE COMMON INTEREST COMMUNITY (C.I.C.)
- 4. SEE THE COMMON INTEREST COMMUNITY (C.I.C.) PLAN FOR THE COMMON INTEREST COMMUNITY (C.I.C.)
- 5. SEE THE COMMON INTEREST COMMUNITY (C.I.C.) PLAN FOR THE COMMON INTEREST COMMUNITY (C.I.C.)
- 6. SEE THE COMMON INTEREST COMMUNITY (C.I.C.) PLAN FOR THE COMMON INTEREST COMMUNITY (C.I.C.)
- 7. SEE THE COMMON INTEREST COMMUNITY (C.I.C.) PLAN FOR THE COMMON INTEREST COMMUNITY (C.I.C.)
- 8. SEE THE COMMON INTEREST COMMUNITY (C.I.C.) PLAN FOR THE COMMON INTEREST COMMUNITY (C.I.C.)
- 9. SEE THE COMMON INTEREST COMMUNITY (C.I.C.) PLAN FOR THE COMMON INTEREST COMMUNITY (C.I.C.)
- 10. SEE THE COMMON INTEREST COMMUNITY (C.I.C.) PLAN FOR THE COMMON INTEREST COMMUNITY (C.I.C.)

F. De Wolf

FINAL MAP OF EASTON PLACE AT PROVIDENCE PHASE 2

A COMMON INTEREST COMMUNITY
A MERGER AND RESUBDIVISION OF LOT 303A, A PORTION OF LOT 303B, COMMON ELEMENT LOT 27, AND A PORTION OF COMMON ELEMENT LOT 74A IN BLOCK 9 OF "CLIFFS EDGE PARENT" ON FILE IN BOOK 118 PAGE 88 OF PLATS IN THE CLARK COUNTY, NEVADA RECORDER'S OFFICE, TOGETHER WITH THE WEST HALF (W 1/2) OF THE SOUTHEAST QUARTER (SE 1/4) OF THE SOUTHWEST QUARTER (SW 1/4) OF THE NORTHWEST QUARTER (NW 1/4) OF SECTION 24, TOWNSHIP 19 SOUTH, RANGE 59 EAST, N.D.M., CITY OF LAS VEGAS, CLARK COUNTY, NEVADA.



COMMON ELEMENT	AREA	PERCENTAGE	ADJACENT LOTS
1	1.00	100%	1, 2, 3, 4, 5, 6, 7, 8, 9, 10, 11, 12, 13, 14, 15, 16, 17, 18, 19, 20, 21, 22, 23, 24, 25, 26, 27, 28, 29, 30, 31, 32, 33, 34, 35, 36, 37, 38, 39, 40, 41, 42, 43, 44, 45, 46, 47, 48, 49, 50, 51, 52, 53, 54, 55, 56, 57, 58, 59, 60, 61, 62, 63, 64, 65, 66, 67, 68, 69, 70, 71, 72, 73, 74, 75, 76, 77, 78, 79, 80, 81, 82, 83, 84, 85, 86, 87, 88, 89, 90, 91, 92, 93, 94, 95, 96, 97, 98, 99, 100

LOT	AREA	PERCENTAGE	ADJACENT LOTS
1	1.00	100%	1, 2, 3, 4, 5, 6, 7, 8, 9, 10, 11, 12, 13, 14, 15, 16, 17, 18, 19, 20, 21, 22, 23, 24, 25, 26, 27, 28, 29, 30, 31, 32, 33, 34, 35, 36, 37, 38, 39, 40, 41, 42, 43, 44, 45, 46, 47, 48, 49, 50, 51, 52, 53, 54, 55, 56, 57, 58, 59, 60, 61, 62, 63, 64, 65, 66, 67, 68, 69, 70, 71, 72, 73, 74, 75, 76, 77, 78, 79, 80, 81, 82, 83, 84, 85, 86, 87, 88, 89, 90, 91, 92, 93, 94, 95, 96, 97, 98, 99, 100

LOT	AREA	PERCENTAGE	ADJACENT LOTS
1	1.00	100%	1, 2, 3, 4, 5, 6, 7, 8, 9, 10, 11, 12, 13, 14, 15, 16, 17, 18, 19, 20, 21, 22, 23, 24, 25, 26, 27, 28, 29, 30, 31, 32, 33, 34, 35, 36, 37, 38, 39, 40, 41, 42, 43, 44, 45, 46, 47, 48, 49, 50, 51, 52, 53, 54, 55, 56, 57, 58, 59, 60, 61, 62, 63, 64, 65, 66, 67, 68, 69, 70, 71, 72, 73, 74, 75, 76, 77, 78, 79, 80, 81, 82, 83, 84, 85, 86, 87, 88, 89, 90, 91, 92, 93, 94, 95, 96, 97, 98, 99, 100

LOT	AREA	PERCENTAGE	ADJACENT LOTS
1	1.00	100%	1, 2, 3, 4, 5, 6, 7, 8, 9, 10, 11, 12, 13, 14, 15, 16, 17, 18, 19, 20, 21, 22, 23, 24, 25, 26, 27, 28, 29, 30, 31, 32, 33, 34, 35, 36, 37, 38, 39, 40, 41, 42, 43, 44, 45, 46, 47, 48, 49, 50, 51, 52, 53, 54, 55, 56, 57, 58, 59, 60, 61, 62, 63, 64, 65, 66, 67, 68, 69, 70, 71, 72, 73, 74, 75, 76, 77, 78, 79, 80, 81, 82, 83, 84, 85, 86, 87, 88, 89, 90, 91, 92, 93, 94, 95, 96, 97, 98, 99, 100

LEGEND

- SET TYPE A COMMON INTEREST COMMUNITY (C.I.C.)
- COMMON ELEMENT
- ① RECORD NUMBER
- ② LOT NUMBER
- ③ COMMON ELEMENT
- ④ LINE RECORD NUMBER
- ⑤ AREA RECORD NUMBER
- ⑥ COMMON ELEMENT
- ⑦ COMMON ELEMENT
- ⑧ COMMON ELEMENT
- ⑨ COMMON ELEMENT
- ⑩ COMMON ELEMENT
- ⑪ COMMON ELEMENT
- ⑫ COMMON ELEMENT
- ⑬ COMMON ELEMENT
- ⑭ COMMON ELEMENT
- ⑮ COMMON ELEMENT
- ⑯ COMMON ELEMENT
- ⑰ COMMON ELEMENT
- ⑱ COMMON ELEMENT
- ⑲ COMMON ELEMENT
- ⑳ COMMON ELEMENT
- ㉑ COMMON ELEMENT
- ㉒ COMMON ELEMENT
- ㉓ COMMON ELEMENT
- ㉔ COMMON ELEMENT
- ㉕ COMMON ELEMENT
- ㉖ COMMON ELEMENT
- ㉗ COMMON ELEMENT
- ㉘ COMMON ELEMENT
- ㉙ COMMON ELEMENT
- ㉚ COMMON ELEMENT
- ㉛ COMMON ELEMENT
- ㉜ COMMON ELEMENT
- ㉝ COMMON ELEMENT
- ㉞ COMMON ELEMENT
- ㉟ COMMON ELEMENT
- ㊀ COMMON ELEMENT
- ㊁ COMMON ELEMENT
- ㊂ COMMON ELEMENT
- ㊃ COMMON ELEMENT
- ㊄ COMMON ELEMENT
- ㊅ COMMON ELEMENT
- ㊆ COMMON ELEMENT
- ㊇ COMMON ELEMENT
- ㊈ COMMON ELEMENT
- ㊉ COMMON ELEMENT
- ㊊ COMMON ELEMENT
- ㊋ COMMON ELEMENT
- ㊌ COMMON ELEMENT
- ㊍ COMMON ELEMENT
- ㊎ COMMON ELEMENT
- ㊏ COMMON ELEMENT
- ㊑ COMMON ELEMENT
- ㊒ COMMON ELEMENT
- ㊓ COMMON ELEMENT
- ㊔ COMMON ELEMENT
- ㊕ COMMON ELEMENT
- ㊖ COMMON ELEMENT
- ㊗ COMMON ELEMENT
- ㊘ COMMON ELEMENT
- ㊙ COMMON ELEMENT
- ㊚ COMMON ELEMENT
- ㊛ COMMON ELEMENT
- ㊜ COMMON ELEMENT
- ㊝ COMMON ELEMENT
- ㊞ COMMON ELEMENT
- ㊟ COMMON ELEMENT
- ㊠ COMMON ELEMENT
- ㊡ COMMON ELEMENT
- ㊢ COMMON ELEMENT
- ㊣ COMMON ELEMENT
- ㊤ COMMON ELEMENT
- ㊥ COMMON ELEMENT
- ㊦ COMMON ELEMENT
- ㊧ COMMON ELEMENT
- ㊨ COMMON ELEMENT
- ㊩ COMMON ELEMENT
- ㊪ COMMON ELEMENT
- ㊫ COMMON ELEMENT
- ㊬ COMMON ELEMENT
- ㊭ COMMON ELEMENT
- ㊮ COMMON ELEMENT
- ㊯ COMMON ELEMENT
- ㊰ COMMON ELEMENT
- ㊱ COMMON ELEMENT
- ㊲ COMMON ELEMENT
- ㊳ COMMON ELEMENT
- ㊴ COMMON ELEMENT
- ㊵ COMMON ELEMENT
- ㊶ COMMON ELEMENT
- ㊷ COMMON ELEMENT
- ㊸ COMMON ELEMENT
- ㊹ COMMON ELEMENT
- ㊺ COMMON ELEMENT
- ㊻ COMMON ELEMENT
- ㊼ COMMON ELEMENT
- ㊽ COMMON ELEMENT
- ㊾ COMMON ELEMENT
- ㊿ COMMON ELEMENT

F. J. Boyd

