

# BRADLEY/AZURE SOUTH UNIT 1

Recorded in Book 85 Page 90 of Plats

200 Scale Map Location: G-25-4

Fire Dept. District Map # 1621:36,37

MASTER SITE ADDRESS: 6110 BRADLEY RD

BLOCK 1	LOT	1	5344	INDIAN MEADOW CT	E/W	PUBLIC STREET
		5	5345			
		6	5341			
		7	5337			
BLOCK 2	LOT	59	5309	AUTUMN MEADOW AVE	E/W	PUBLIC STREET
		60	5301			
		61	5221			
		62	5217			
		63	5213			
		64	5209			
		65	5205			
		66	5201			
		67	5121			
		68	5117			
		69	5113			
		70	5109			
		71	5105			
BLOCK 2	LOT	72	6025	WINTER MEADOW ST	N/S	PUBLIC STREET
		73	6021			
		74	6017			
		75	6009			
		76	6005			
BLOCK 3	LOT	77	5109	EVERGREEN MEADOW AVE	E/W	PUBLIC STREET
		78	5105			
		79	5101			
BLOCK 3	LOT	80	6004	WINTER MEADOW ST	N/S	PUBLIC STREET
		81	6008			
		82	6012			
		83	6016			
		84	6020			
		85	6024			
		86	6100			
		87	6104			
		88	6108			
		89	6112			
BLOCK 3	LOT	90	5100	AUTUMN MEADOW AVE	E/W	PUBLIC STREET
		91	5104			
		92	5108			
		93	5112			
		94	5116			
		95	5120			
		96	5200			
		97	5204			
		98	5208			

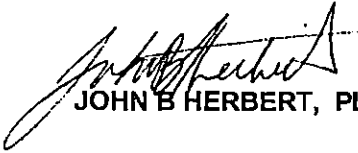
# BRADLEY/AZURE SOUTH UNIT 1

BLOCK 3	LOT	99	5212	AUTUMN MEADOW AVE	E/W	PUBLIC STREET
		100	5216			
		101	5220			
		102	5300			
		103	5304			
		104	5308			
		105	5312			
Common Area	A	5327	AZURE DR	E/W	PUBLIC STREET	
Common Area	B	6110	AUTUMN CREEK DR	N/S	PUBLIC STREET	
Common Area	C	6106	WINTER MEADOW ST	N/S	PUBLIC STREET	
	D	6002				
Common Area	E	6122	AUTUMN CREEK DR	N/S	PUBLIC STREET	
	F	6118				
	G	6114				
Common Area	H	5323	AZURE DR	E/W	PUBLIC STREET	
	I	5331				
	J	5335				

Streets with no addresses: WHITE MEADOW STREET (N/S) and BULLRING LANE (E/W)

ORIGINAL DATE: 9/02/1998

**CITY OF LAS VEGAS  
PLANNING & DEVELOPMENT DEPARTMENT**



**JOHN B HERBERT, PLANNER I**

# BRADLEY/AZURE SOUTH UNIT 1

Recorded in Book 85 Page 90 of Plats

200 Scale Map Location: G-25-4

Fire Dept. District Map # 1621:36,37

MASTER SITE ADDRESS: 6110 BRADLEY RD

BLOCK 1	LOT	1	5344	INDIAN MEADOW CT	E/W	PUBLIC STREET
		5	5345			
		6	5341			
		7	5337			
BLOCK 2	LOT	59	5309	AUTUMN MEADOW AVE	E/W	PUBLIC STREET
		60	5301			
		61	5221			
		62	5217			
		63	5213			
		64	5209			
		65	5205			
		66	5201			
		67	5121			
		68	5117			
		69	5113			
		70	5109			
		71	5105			
BLOCK 2	LOT	72	6025	WINTER MEADOW ST	N/S	PUBLIC STREET
		73	6021			
		74	6017			
		75	6009			
		76	6005			
BLOCK 3	LOT	77	5109	EVERGREEN MEADOW AVE	E/W	PUBLIC STREET
		78	5105			
		79	5101			
BLOCK 3	LOT	80	6004	WINTER MEADOW ST	N/S	PUBLIC STREET
		81	6008			
		82	6012			
		83	6016			
		84	6020			
		85	6024			
		86	6100			
		87	6104			
		88	6108			
		89	6112			
BLOCK 3	LOT	90	5100	AUTUMN MEADOW AVE	E/W	PUBLIC STREET
		91	5104			
		92	5108			
		93	5112			
		94	5116			
		95	5120			
		96	5200			
		97	5204			
		98	5208			

# BRADLEY/AZURE SOUTH UNIT 1

BLOCK 3	LOT	99	5212	AUTUMN MEADOW AVE	E/W	PUBLIC STREET
		100	5216			
		101	5220			
		102	5300			
		103	5304			
		104	5308			
		105	5312			
Common Area	A	5327	AZURE DR	E/W	PUBLIC STREET	
Common Area	B	6110	AUTUMN CREEK DR	N/S	PUBLIC STREET	
Common Area	C	6106	WINTER MEADOW ST	N/S	PUBLIC STREET	
	D	6002				
Common Area	E	6122	AUTUMN CREEK DR	N/S	PUBLIC STREET	
	F	6118				
	G	6114				
Common Area	H	5323	AZURE DR	E/W	PUBLIC STREET	
	I	5331				
	J	5335				

Streets with no addresses: WHITE MEADOW STREET (N/S) and BULLRING LANE (E/W)

ORIGINAL DATE: 9/02/1998

**CITY OF LAS VEGAS  
PLANNING & DEVELOPMENT DEPARTMENT**



JOHN B HERBERT, PLANNER I



**HUNSAKER  
& ASSOCIATES**  
N E V A D A , I N C .

PLANNING  
ENGINEERING  
SURVEYING

IRVINE  
LAS VEGAS  
RIVERSIDE  
SAN DIEGO

**CERTIFICATE OF AMENDMENT**

September 18, 1998

Ms. Rita Lumos  
City of Las Vegas Surveyor

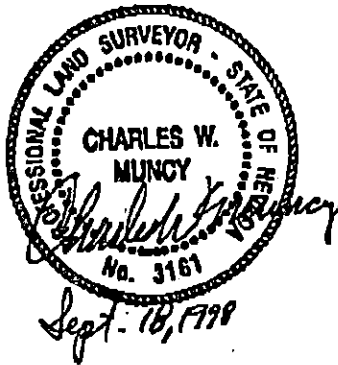
DOCUMENT: Final Map of Bradley/Azure South Unit 1, filed in book 85 of  
Plats page 90

LEGAL DESCRIPTION: Being a portion of Parcel 2, as shown on the Amended  
Map, File 92, Page 07, of Parcel Maps located in  
Section 25, Township 19 South, Range 60 East,  
M.D.M., City of Las Vegas, Clark County, Nevada.

RECORDING DATE: September 02, 1998

CAPTION: Change the callout of "Block 4" to "Block 3" on  
lot number 77 on sheet 4 of 5.

I, Charles W. Muncy, a professional land surveyor,  
registered in the State of Nevada, hereby certify that  
the above is correct and does not change the location  
of any lot lines as platted.



Charles W. Muncy, P.L.S.  
Nevada Certificate No. 3161

LARRY W. BROSS

401 N. Buffalo Drive  
Suite 100  
Las Vegas, Nevada  
89128  
(702) 242-4200 PH  
(702) 243-2100 FX  
www.hunsaker.com



I hereby certify that I have examined the Certificate of Amendment and that the changes to the original document specified therein are provided for in applicable sections of NRS 278.010 to 278.630 inclusive, NRS 625.340 to 625.380 inclusive, and local ordinances adopted pursuant thereto, and I am satisfied that this Certificate of Amendment so amends or corrects the document as to make it technically correct.

*Rita Lumos* 9/23/98  
Rita Lumos, P.L.S.  
City of Las Vegas Surveyor

**WHEN RECORDED, MAIL TO:**

Hunsaker & Associates Nevada, Inc.  
401 North Buffalo Dr.  
Las Vegas, Nevada 89128

CLARK COUNTY, NEVADA			
JUDITH A. VANDEVER, RECORDER			
RECORDED AT REQUEST OF:			
HUNSAKER & ASSOCIATES NEVADA INC			
09-23-98	14:57	DB1	2
BOOK: 980923	INST: 01295		
FEE:	8.00	RPTT:	.00
CA PLAT			
CONFORMED COPY HAS NOT BEEN COMPARED TO THE ORIGINAL			

480002

*Handwritten signature*

2231

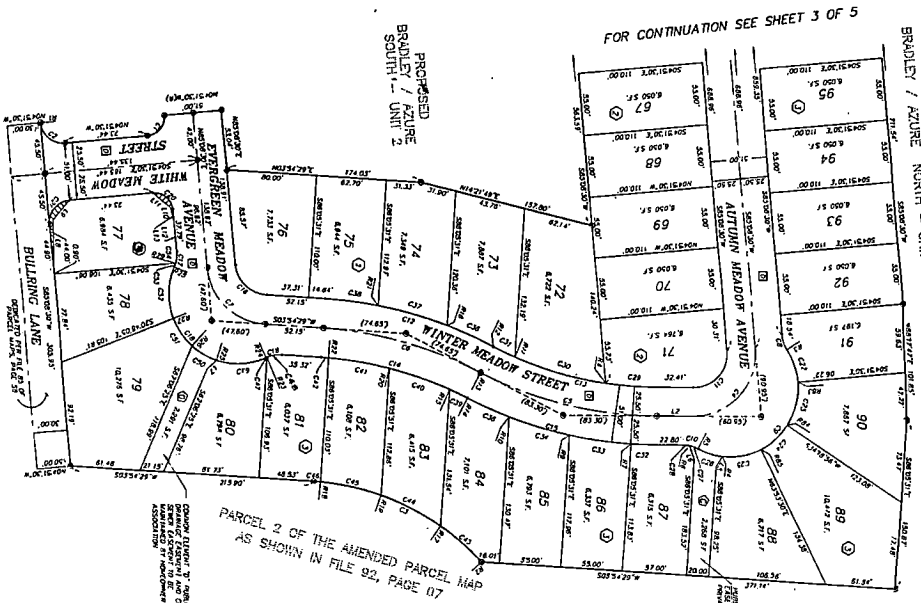
PROPOSED  
BRADLEY / AZURE NORTH - UNIT 1

# BRADLEY / AZURE SOUTH - UNIT 1

A PORTION OF PARCEL 2 AS SHOWN ON THE AMENDED PARCEL MAP IN FILE 92 OF PARCEL MAPS, PAGE 07,  
LOCATED IN SECTION 22, TOWNSHIP 19 SOUTH, RANGE 60 EAST, N.D.M.,  
CITY OF LAS VEGAS, CLARK COUNTY, NEVADA.

FOR BRADLEY LANE TABLE AND  
CURVE TABLES SEE SHEETS 3 OF 5  
CURVE TABLES SEE SHEETS 4 OF 5

FOR CONTINUATION SEE SHEET 3 OF 5



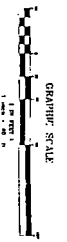
PARCEL 2 OF THE AMENDED PARCEL MAP  
AS SHOWN IN FILE 92, PAGE 07

**LEGEND:**

- BOUNDARY LINE
- 101' EASEMENT
- STREET RIGHT-OF-WAY
- ASSISTED/INCENTIVE RECEIVABLE FEE
- 271' x 160' x 161' x 271' ASSISTED/INCENTIVE RECEIVABLE FEE
- PORT OF CONSTRUCTION
- 101' x 101' x 101' x 101' EASEMENT
- CORNER MARKER
- STATION MARKER
- ASSESSOR'S PARCEL NUMBER
- COUNTY/TRACT/BLOCK/SECTION/RANGE/ZONE/COUNTY/STATE
- PROPOSED IMPROVEMENT
- EASEMENT FOR ACQUISITION FOR THE USE OF THE PROPERTY
- EASEMENT FOR UTILITY
- COMMON ELEMENT
- COMMON ELEMENT (101' x 101' x 101' x 101')

**NOTES:**

- 1) ALL LOT AREA DIMENSIONS SHALL BE IN FEET AND DECIMAL PARTS THEREOF.
- 2) ALL DIMENSIONS SHALL BE MEASURED FROM THE CENTERLINE OF THE ROAD OR FROM THE CENTERLINE OF THE PROPERTY.
- 3) STREET WIDTHS ARE AS SHOWN ON THE AMENDED PARCEL MAP.
- 4) FROM EXISTING LOTS 3 AND 4.
- 5) FROM EXISTING LOTS 3 AND 4.
- 6) FROM EXISTING LOTS 3 AND 4.
- 7) FROM EXISTING LOTS 3 AND 4.
- 8) FROM EXISTING LOTS 3 AND 4.
- 9) FROM EXISTING LOTS 3 AND 4.
- 10) FROM EXISTING LOTS 3 AND 4.
- 11) FROM EXISTING LOTS 3 AND 4.
- 12) FROM EXISTING LOTS 3 AND 4.
- 13) FROM EXISTING LOTS 3 AND 4.
- 14) FROM EXISTING LOTS 3 AND 4.
- 15) FROM EXISTING LOTS 3 AND 4.
- 16) FROM EXISTING LOTS 3 AND 4.
- 17) FROM EXISTING LOTS 3 AND 4.
- 18) FROM EXISTING LOTS 3 AND 4.
- 19) FROM EXISTING LOTS 3 AND 4.
- 20) FROM EXISTING LOTS 3 AND 4.
- 21) FROM EXISTING LOTS 3 AND 4.
- 22) FROM EXISTING LOTS 3 AND 4.
- 23) FROM EXISTING LOTS 3 AND 4.
- 24) FROM EXISTING LOTS 3 AND 4.
- 25) FROM EXISTING LOTS 3 AND 4.
- 26) FROM EXISTING LOTS 3 AND 4.
- 27) FROM EXISTING LOTS 3 AND 4.
- 28) FROM EXISTING LOTS 3 AND 4.
- 29) FROM EXISTING LOTS 3 AND 4.
- 30) FROM EXISTING LOTS 3 AND 4.
- 31) FROM EXISTING LOTS 3 AND 4.
- 32) FROM EXISTING LOTS 3 AND 4.
- 33) FROM EXISTING LOTS 3 AND 4.
- 34) FROM EXISTING LOTS 3 AND 4.
- 35) FROM EXISTING LOTS 3 AND 4.
- 36) FROM EXISTING LOTS 3 AND 4.
- 37) FROM EXISTING LOTS 3 AND 4.
- 38) FROM EXISTING LOTS 3 AND 4.
- 39) FROM EXISTING LOTS 3 AND 4.
- 40) FROM EXISTING LOTS 3 AND 4.
- 41) FROM EXISTING LOTS 3 AND 4.
- 42) FROM EXISTING LOTS 3 AND 4.
- 43) FROM EXISTING LOTS 3 AND 4.
- 44) FROM EXISTING LOTS 3 AND 4.
- 45) FROM EXISTING LOTS 3 AND 4.
- 46) FROM EXISTING LOTS 3 AND 4.
- 47) FROM EXISTING LOTS 3 AND 4.
- 48) FROM EXISTING LOTS 3 AND 4.
- 49) FROM EXISTING LOTS 3 AND 4.
- 50) FROM EXISTING LOTS 3 AND 4.
- 51) FROM EXISTING LOTS 3 AND 4.
- 52) FROM EXISTING LOTS 3 AND 4.
- 53) FROM EXISTING LOTS 3 AND 4.
- 54) FROM EXISTING LOTS 3 AND 4.
- 55) FROM EXISTING LOTS 3 AND 4.
- 56) FROM EXISTING LOTS 3 AND 4.
- 57) FROM EXISTING LOTS 3 AND 4.
- 58) FROM EXISTING LOTS 3 AND 4.
- 59) FROM EXISTING LOTS 3 AND 4.
- 60) FROM EXISTING LOTS 3 AND 4.
- 61) FROM EXISTING LOTS 3 AND 4.
- 62) FROM EXISTING LOTS 3 AND 4.
- 63) FROM EXISTING LOTS 3 AND 4.
- 64) FROM EXISTING LOTS 3 AND 4.
- 65) FROM EXISTING LOTS 3 AND 4.
- 66) FROM EXISTING LOTS 3 AND 4.
- 67) FROM EXISTING LOTS 3 AND 4.
- 68) FROM EXISTING LOTS 3 AND 4.
- 69) FROM EXISTING LOTS 3 AND 4.
- 70) FROM EXISTING LOTS 3 AND 4.
- 71) FROM EXISTING LOTS 3 AND 4.
- 72) FROM EXISTING LOTS 3 AND 4.
- 73) FROM EXISTING LOTS 3 AND 4.
- 74) FROM EXISTING LOTS 3 AND 4.
- 75) FROM EXISTING LOTS 3 AND 4.
- 76) FROM EXISTING LOTS 3 AND 4.
- 77) FROM EXISTING LOTS 3 AND 4.
- 78) FROM EXISTING LOTS 3 AND 4.
- 79) FROM EXISTING LOTS 3 AND 4.
- 80) FROM EXISTING LOTS 3 AND 4.
- 81) FROM EXISTING LOTS 3 AND 4.
- 82) FROM EXISTING LOTS 3 AND 4.
- 83) FROM EXISTING LOTS 3 AND 4.
- 84) FROM EXISTING LOTS 3 AND 4.
- 85) FROM EXISTING LOTS 3 AND 4.
- 86) FROM EXISTING LOTS 3 AND 4.
- 87) FROM EXISTING LOTS 3 AND 4.
- 88) FROM EXISTING LOTS 3 AND 4.
- 89) FROM EXISTING LOTS 3 AND 4.
- 90) FROM EXISTING LOTS 3 AND 4.
- 91) FROM EXISTING LOTS 3 AND 4.
- 92) FROM EXISTING LOTS 3 AND 4.
- 93) FROM EXISTING LOTS 3 AND 4.
- 94) FROM EXISTING LOTS 3 AND 4.
- 95) FROM EXISTING LOTS 3 AND 4.



GRAPHIC SCALE

