

WHISPERING SANDS

Recorded in Book 100 Page 1 of Plats

200 Scale Map Location: G-13-3

Fire Dept. District Map # 1421:33,34; 43,44

MASTER SITE ADDRESS: 5711 WHISPERING SANDS DR

BLOCK 1	LOT	14	7723	CALM WATERS ST	N/S	PUBLIC STREET
		15	7719			
		16	7715			
		17	7711			
		18	7707			
		19	7703			
BLOCK 1	LOT	20	5712	WHISPERING WATERS AVE	E/W	PUBLIC STREET
		21	5716			
		22	5720			
BLOCK 2	LOT	1	5721	WHISPERING WATERS AVE	E/W	PUBLIC STREET
		2	5717			
		3	5713			
		4	5709			
		5	5705			
		6	5701			
BLOCK 2	LOT	7	7700	CALM WATERS ST	N/S	PUBLIC STREET
		8	7704			
		9	7708			
		10	7712			
		11	7716			
		12	7720			
		13	7724			

No addresses on LEON AVENUE (N/S Public Street).

ORIGINAL DATE: 5/18/2001

CITY OF LAS VEGAS
PLANNING & DEVELOPMENT DEPARTMENT



DAVID R BRATCHER, SR PLANNER

WHISPERING SANDS

Recorded in Book 100 Page 1 of Plats

200 Scale Map Location: G-13-3

Fire Dept. District Map # 1421:33,34; 43,44

MASTER SITE ADDRESS: 5711 WHISPERING SANDS DR

BLOCK 1	LOT	14	7723	CALM WATERS ST	N/S	PUBLIC STREET
		15	7719			
		16	7715			
		17	7711			
		18	7707			
		19	7703			
BLOCK 1	LOT	20	5712	WHISPERING WATERS AVE	E/W	PUBLIC STREET
		21	5716			
		22	5720			
BLOCK 2	LOT	1	5721	WHISPERING WATERS AVE	E/W	PUBLIC STREET
		2	5717			
		3	5713			
		4	5709			
		5	5705			
		6	5701			
BLOCK 2	LOT	7	7700	CALM WATERS ST	N/S	PUBLIC STREET
		8	7704			
		9	7708			
		10	7712			
		11	7716			
		12	7720			
		13	7724			

No addresses on LEON AVENUE (N/S Public Street).

ORIGINAL DATE: 5/18/2001

CITY OF LAS VEGAS
PLANNING & DEVELOPMENT DEPARTMENT



DAVID R BRATCHER, SR PLANNER

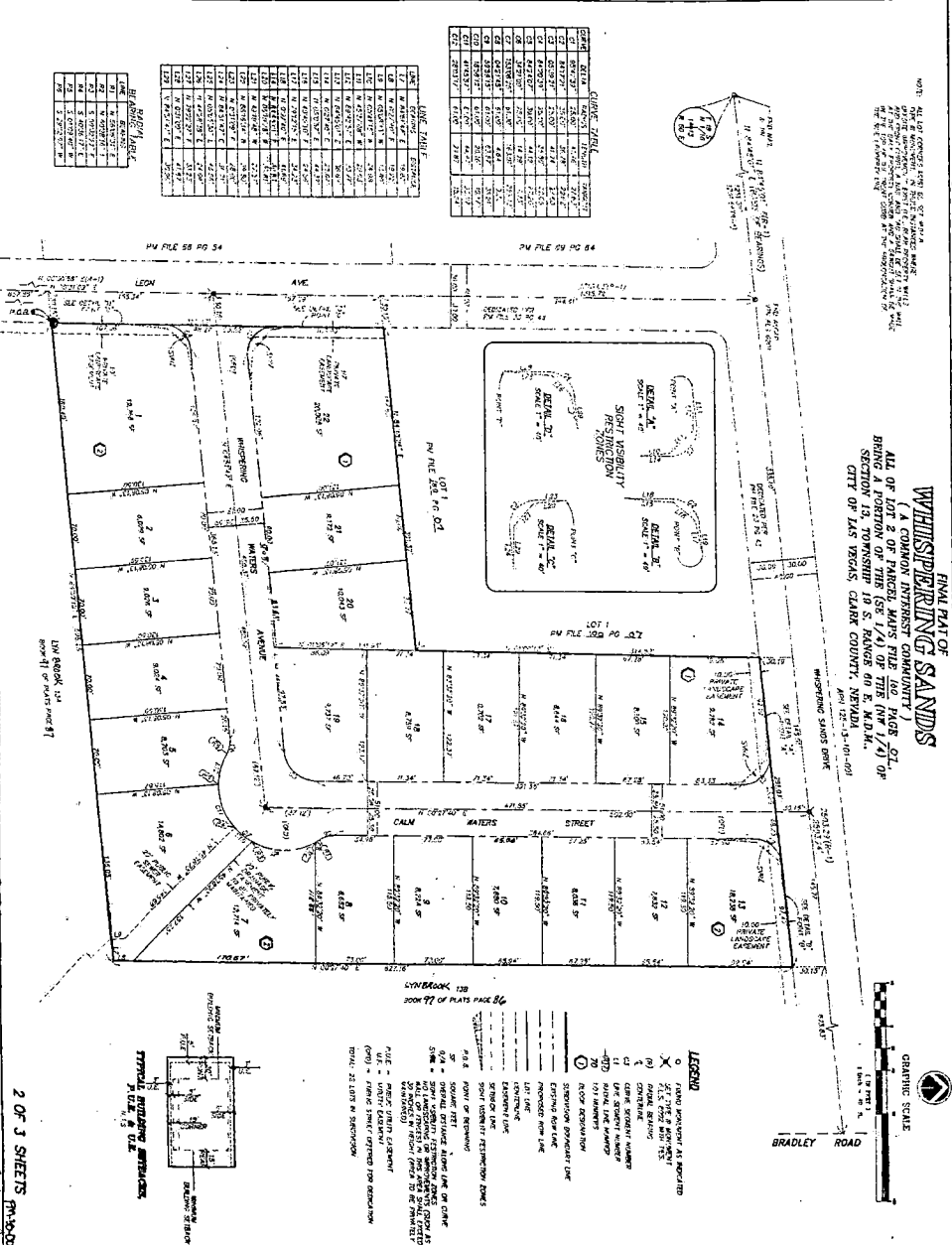
2010518

NOT: ALL LOT CORNERS SHOWN BY THIS PLAN ARE TO BE CONSIDERED AS APPROXIMATE UNLESS OTHERWISE NOTED. THE EXACT LOCATION OF THE CORNERS SHALL BE DETERMINED BY THE SURVEYOR AT THE TIME OF THE FINAL SURVEY. THE SURVEYOR SHALL BE RESPONSIBLE FOR THE ACCURACY OF THE SURVEY.

FINAL PART OF WHISPERRING SANDS
 (A COMMON INTEREST COMMUNITY)
 ALL OF LOT 2 OF PARCEL MAPS FILE NO. PAGE 01, SECTION 13, TOWNSHIP 19 S, RANGE 09 E, N.D.M., CITY OF LAS VEGAS, CLARK COUNTY, NEVADA, MAP 12-13-101-001

POINT	BEARING	DISTANCE	POINT	BEARING	DISTANCE
1	N 89° 58' 00" W	100.00	11	N 89° 58' 00" W	100.00
2	N 89° 58' 00" W	100.00	12	N 89° 58' 00" W	100.00
3	N 89° 58' 00" W	100.00	13	N 89° 58' 00" W	100.00
4	N 89° 58' 00" W	100.00	14	N 89° 58' 00" W	100.00
5	N 89° 58' 00" W	100.00	15	N 89° 58' 00" W	100.00
6	N 89° 58' 00" W	100.00	16	N 89° 58' 00" W	100.00
7	N 89° 58' 00" W	100.00	17	N 89° 58' 00" W	100.00
8	N 89° 58' 00" W	100.00	18	N 89° 58' 00" W	100.00
9	N 89° 58' 00" W	100.00	19	N 89° 58' 00" W	100.00
10	N 89° 58' 00" W	100.00	20	N 89° 58' 00" W	100.00

POINT	BEARING	DISTANCE
1	N 89° 58' 00" W	100.00
2	N 89° 58' 00" W	100.00
3	N 89° 58' 00" W	100.00
4	N 89° 58' 00" W	100.00
5	N 89° 58' 00" W	100.00
6	N 89° 58' 00" W	100.00
7	N 89° 58' 00" W	100.00
8	N 89° 58' 00" W	100.00
9	N 89° 58' 00" W	100.00
10	N 89° 58' 00" W	100.00



BOOK 200 OF PLATS PAGE 86

LEGEND
 (X) EXISTING IMPROVEMENT AS SHOWN
 (1) 1/4" = 1' SCALE
 (2) 1/8" = 1' SCALE
 (3) 1/16" = 1' SCALE
 (4) 1/32" = 1' SCALE
 (5) 1/64" = 1' SCALE
 (6) 1/128" = 1' SCALE
 (7) 1/256" = 1' SCALE
 (8) 1/512" = 1' SCALE
 (9) 1/1024" = 1' SCALE
 (10) 1/2048" = 1' SCALE
 (11) 1/4096" = 1' SCALE
 (12) 1/8192" = 1' SCALE
 (13) 1/16384" = 1' SCALE
 (14) 1/32768" = 1' SCALE
 (15) 1/65536" = 1' SCALE
 (16) 1/131072" = 1' SCALE
 (17) 1/262144" = 1' SCALE
 (18) 1/524288" = 1' SCALE
 (19) 1/1048576" = 1' SCALE
 (20) 1/2097152" = 1' SCALE
 (21) 1/4194304" = 1' SCALE
 (22) 1/8388608" = 1' SCALE
 (23) 1/16777216" = 1' SCALE
 (24) 1/33554432" = 1' SCALE
 (25) 1/67108864" = 1' SCALE
 (26) 1/134217728" = 1' SCALE
 (27) 1/268435456" = 1' SCALE
 (28) 1/536870912" = 1' SCALE
 (29) 1/1073741824" = 1' SCALE
 (30) 1/2147483648" = 1' SCALE
 (31) 1/4294967296" = 1' SCALE
 (32) 1/8589934592" = 1' SCALE
 (33) 1/17179869184" = 1' SCALE
 (34) 1/34359738368" = 1' SCALE
 (35) 1/68719476736" = 1' SCALE
 (36) 1/137438953472" = 1' SCALE
 (37) 1/274877906944" = 1' SCALE
 (38) 1/549755813888" = 1' SCALE
 (39) 1/1099511627776" = 1' SCALE
 (40) 1/2199023255552" = 1' SCALE
 (41) 1/4398046511104" = 1' SCALE
 (42) 1/8796093022208" = 1' SCALE
 (43) 1/17592186444416" = 1' SCALE
 (44) 1/35184372888832" = 1' SCALE
 (45) 1/70368745777664" = 1' SCALE
 (46) 1/140737491555328" = 1' SCALE
 (47) 1/281474983110656" = 1' SCALE
 (48) 1/562949966221312" = 1' SCALE
 (49) 1/1125899932442624" = 1' SCALE
 (50) 1/2251799864885248" = 1' SCALE
 (51) 1/4503599729770496" = 1' SCALE
 (52) 1/9007199459540992" = 1' SCALE
 (53) 1/18014398919081984" = 1' SCALE
 (54) 1/36028797838163968" = 1' SCALE
 (55) 1/72057595676327936" = 1' SCALE
 (56) 1/14411519135265584" = 1' SCALE
 (57) 1/28823038270531168" = 1' SCALE
 (58) 1/57646076541062336" = 1' SCALE
 (59) 1/115292153082124672" = 1' SCALE
 (60) 1/230584306164249344" = 1' SCALE
 (61) 1/461168612328498688" = 1' SCALE
 (62) 1/922337224656997376" = 1' SCALE
 (63) 1/1844674449313994752" = 1' SCALE
 (64) 1/3689348898627989504" = 1' SCALE
 (65) 1/7378697797255979008" = 1' SCALE
 (66) 1/14757395984511958016" = 1' SCALE
 (67) 1/29514791969023916032" = 1' SCALE
 (68) 1/59029583938047832064" = 1' SCALE
 (69) 1/118059167876095664128" = 1' SCALE
 (70) 1/236118335752191328256" = 1' SCALE
 (71) 1/472236671504382656512" = 1' SCALE
 (72) 1/944473343008765313024" = 1' SCALE
 (73) 1/1888946686017310626048" = 1' SCALE
 (74) 1/3777893372034621252096" = 1' SCALE
 (75) 1/7555786744069242504192" = 1' SCALE
 (76) 1/15111573488138485008384" = 1' SCALE
 (77) 1/30223146976276970016768" = 1' SCALE
 (78) 1/60446293952553940033536" = 1' SCALE
 (79) 1/120892587905107880067072" = 1' SCALE
 (80) 1/241785175810215760134144" = 1' SCALE
 (81) 1/483570351620431520268288" = 1' SCALE
 (82) 1/967140703240863040536576" = 1' SCALE
 (83) 1/1934281406481726081073152" = 1' SCALE
 (84) 1/3868562812963452162146304" = 1' SCALE
 (85) 1/7737125625926904324292608" = 1' SCALE
 (86) 1/15474251251853808648585216" = 1' SCALE
 (87) 1/30948502503707617297171432" = 1' SCALE
 (88) 1/6189700500741523459434264" = 1' SCALE
 (89) 1/12379401001483046918868528" = 1' SCALE
 (90) 1/24758802002966093837737056" = 1' SCALE
 (91) 1/49517604005932187675474112" = 1' SCALE
 (92) 1/99035208011864375350948224" = 1' SCALE
 (93) 1/19807041602372875070189448" = 1' SCALE
 (94) 1/39614083204745750140378896" = 1' SCALE
 (95) 1/79228166409491500280757792" = 1' SCALE
 (96) 1/158456332818983000561515584" = 1' SCALE
 (97) 1/316912665637966001123031168" = 1' SCALE
 (98) 1/633825331275932002246062336" = 1' SCALE
 (99) 1/1267650662551864004492124672" = 1' SCALE
 (100) 1/2535301325103728008984249344" = 1' SCALE
 (101) 1/5070602650207456017968498688" = 1' SCALE
 (102) 1/10141205300415112035936977376" = 1' SCALE
 (103) 1/20282410600830224071877414752" = 1' SCALE
 (104) 1/40564821201660448143757489504" = 1' SCALE
 (105) 1/81129642403320896287514979008" = 1' SCALE
 (106) 1/16225928480664179257502978016" = 1' SCALE
 (107) 1/32451856961328358515005956032" = 1' SCALE
 (108) 1/64903713922656717030011912064" = 1' SCALE
 (109) 1/129807427845113434060038240128" = 1' SCALE
 (110) 1/259614855690226868120076480256" = 1' SCALE
 (111) 1/519229711380453736240152960512" = 1' SCALE
 (112) 1/103845942276090747248030582016" = 1' SCALE
 (113) 1/207691884552181494496061164032" = 1' SCALE
 (114) 1/4153837691043629889921220064" = 1' SCALE
 (115) 1/8307675382087259779842440128" = 1' SCALE
 (116) 1/16615350764174519559684880256" = 1' SCALE
 (117) 1/33230701528349039119369760512" = 1' SCALE
 (118) 1/66461403056698078238739521024" = 1' SCALE
 (119) 1/13292280611339615647747842048" = 1' SCALE
 (120) 1/26584561222793231295495040096" = 1' SCALE
 (121) 1/53169122445586462590990080192" = 1' SCALE
 (122) 1/106338244891172925181980160384" = 1' SCALE
 (123) 1/212676489782345850363960320768" = 1' SCALE
 (124) 1/425352979564691700727920641536" = 1' SCALE
 (125) 1/850705959129383401455841283072" = 1' SCALE
 (126) 1/1701411918258766802911682566144" = 1' SCALE
 (127) 1/3402823836517533605823365132288" = 1' SCALE
 (128) 1/6805647673035067211646726264576" = 1' SCALE
 (129) 1/13611295346070134423293452529152" = 1' SCALE
 (130) 1/27222590692140268846586905058304" = 1' SCALE
 (131) 1/54445181384280537693173810116608" = 1' SCALE
 (132) 1/108890362768561075366347620233216" = 1' SCALE
 (133) 1/217780725537122150732695240466432" = 1' SCALE
 (134) 1/435561451074244301465390480932864" = 1' SCALE
 (135) 1/8711229021484886029307809618656" = 1' SCALE
 (136) 1/17422458449697772058615619237312" = 1' SCALE
 (137) 1/34844916899395544117231238474624" = 1' SCALE
 (138) 1/69689833798791088234464676949248" = 1' SCALE
 (139) 1/13937966759758217646892935389888" = 1' SCALE
 (140) 1/27875933519516435293785870779776" = 1' SCALE
 (141) 1/55751867039032870587571741559552" = 1' SCALE
 (142) 1/111503734078065741175143483119104" = 1' SCALE
 (143) 1/223007468156131482350286966238208" = 1' SCALE
 (144) 1/446014936312262964700573924474176" = 1' SCALE
 (145) 1/892029872624525929401147896948352" = 1' SCALE
 (146) 1/178405974524905185880229793389704" = 1' SCALE
 (147) 1/356811949049810371760459586779408" = 1' SCALE
 (148) 1/71362389809962074352091917355872" = 1' SCALE
 (149) 1/142724779619924147044183836711744" = 1' SCALE
 (150) 1/28544955923984829408836767342488" = 1' SCALE
 (151) 1/57089911847969658817673534684976" = 1' SCALE
 (152) 1/114179837695939317635347069369536" = 1' SCALE
 (153) 1/228359675391878635270694138739072" = 1' SCALE
 (154) 1/456719350783757270541388277478144" = 1' SCALE
 (155) 1/913438701567514541082776554956288" = 1' SCALE
 (156) 1/182687740313502908216455310991136" = 1' SCALE
 (157) 1/365375480627005816432910621998272" = 1' SCALE
 (158) 1/730750961254011632665821239996544" = 1' SCALE
 (159) 1/146150192250802326533164247993088" = 1' SCALE
 (160) 1/292300384501604653066328495986176" = 1' SCALE
 (161) 1/584600769003209306133261711972352" = 1' SCALE
 (162) 1/116920153800641861266524342394464" = 1' SCALE
 (163) 1/233840307601283722533048684788896" = 1' SCALE
 (164) 1/467680615202567445066097369577792" = 1' SCALE
 (165) 1/935361230405134890132115479155584" = 1' SCALE
 (166) 1/1870722460810297780264229598311168" = 1' SCALE
 (167) 1/3741444921620595560528459196622336" = 1' SCALE
 (168) 1/7482889843241191121056918393244672" = 1' SCALE
 (169) 1/149657796864837824211131367848944" = 1' SCALE
 (170) 1/299315593729675648422262735697888" = 1' SCALE
 (171) 1/598631187459351296844525471395776" = 1' SCALE
 (172) 1/1197262374918702593689050942791552" = 1' SCALE
 (173) 1/239452474983740518737810108558304" = 1' SCALE
 (174) 1/478904949967481037475620217116608" = 1' SCALE
 (175) 1/957809899934962074951240434232176" = 1' SCALE
 (176) 1/191561979986992414902480868464352" = 1' SCALE
 (177) 1/383123959973984829804961736928704" = 1' SCALE
 (178) 1/76624791994796965960993347385728" = 1' SCALE
 (179) 1/1532495839895939312139986677711552" = 1' SCALE
 (180) 1/306499167979187862427997335542304" = 1' SCALE
 (181) 1/612998335958375724855994711084608" = 1' SCALE
 (182) 1/1225996671176751449111991422169216" = 1' SCALE
 (183) 1/245199334235350289822398284438432" = 1' SCALE
 (184) 1/490398668470700579644796568876864" = 1' SCALE
 (185) 1/980797336941401159289593137753728" = 1' SCALE
 (186) 1/196159467388280231857918627550752" = 1' SCALE
 (187) 1/392318934776560463715837251101504" = 1' SCALE
 (188) 1/784637869553120927431674502203008" = 1' SCALE
 (189) 1/156927573910641854863349000446016" = 1' SCALE
 (190) 1/313855147821283709726668000892032" = 1' SCALE
 (191) 1/627710295642567419453336001784064" = 1' SCALE
 (192) 1/125542059128513543890668003568128" = 1' SCALE
 (193) 1/251084118257027087781336007137256" = 1' SCALE
 (194) 1/502168236514054175562672014275104" = 1' SCALE
 (195) 1/1004336473028108351124524428550208" = 1' SCALE
 (196) 1/2008672946056216702249048577100416" = 1' SCALE
 (197) 1/4017345892112433404498097154200832" = 1' SCALE
 (198) 1/8034691784224866808996194288401664" = 1' SCALE
 (199) 1/1606938376844933617999238857683328" = 1' SCALE
 (200) 1/321387675368986723599847771536656" = 1' SCALE
 (201) 1/642775350737973447199695543073312" = 1' SCALE
 (202) 1/1285550701475946894399391086146624" = 1' SCALE
 (203) 1/257110140295189378879878217229248" = 1' SCALE
 (204) 1/514220280590378757759756434458496" = 1' SCALE
 (205) 1/102844056118075751551951288908992" = 1' SCALE
 (206) 1/205688112236151503103902577817984" = 1' SCALE
 (207) 1/411376224472303006207805155635968" = 1' SCALE
 (208) 1/8227524489446060124156103112727168" = 1' SCALE
 (209) 1/1645504977889212024831220622545336" = 1' SCALE
 (210) 1/329100995577842404966244124509068" = 1' SCALE
 (211) 1/658201991155684809932482490018136" = 1' SCALE
 (212) 1/1316403982313689619864844980036272" = 1' SCALE
 (213) 1/2632807964627379239729699960072544" = 1' SCALE
 (214) 1/5265615929254758479459399920145088" = 1' SCALE
 (215) 1/10531231858509516958918798400291168" = 1' SCALE
 (216) 1/21062463717019033917837596800582336" = 1' SCALE
 (217) 1/421249274340380678356751936011644672" = 1' SCALE
 (218) 1/84249854868076135671350383202328944" = 1' SCALE
 (219) 1/16849970973615227135270076640457888" = 1' SCALE
 (220) 1/33699941947230454270540153280915776" = 1' SCALE
 (221) 1/6739988389446090854108030656183552" = 1' SCALE
 (222) 1/1347997677889218170821606131127104" = 1' SCALE
 (223) 1/2695995355778436341643212222254208" = 1' SCALE
 (224) 1/5391990711556872683286424444508416" = 1' SCALE
 (225) 1/1078398142313755336657284888901632" = 1' SCALE
 (226) 1/2156796284627510673314569777803264" = 1' SCALE
 (227) 1/4313592569255021346629139555606528" = 1' SCALE
 (228) 1/8627185138510042693258271111213056" = 1' SCALE
 (229) 1/17254370277020085384516542222426112" = 1' SCALE
 (230) 1/34508740554040170769033084444852224" = 1' SCALE
 (231) 1/69017481108080341538066168888904448" = 1' SCALE
 (232) 1/13803496221616068307613233777780896" = 1' SCALE
 (233) 1/276069924432321366152264675555617792" = 1' SCALE
 (234) 1/5521398488646427323045293111113544" = 1' SCALE
 (235) 1/11042796977292854646090582222227088" = 1' SCALE
 (236) 1/220855939545857092921811644444441376" = 1' SCALE
 (237) 1/441711879091714185843623288888882752" = 1' SCALE
 (238) 1/88342375818342837168684657777776544" = 1' SCALE
 (239) 1/176684751636685673337369355555551088" = 1' SCALE
 (240) 1/35336950327337134707473871111112176" = 1' SCALE
 (241) 1/70673900654674269414947742222224352" = 1' SCALE
 (242) 1/141347801309348538829895484444448704" = 1' SCALE
 (243) 1/282695602618697077659790968888894048" = 1' SCALE
 (244) 1/565391205237394155319578177777778096" = 1' SCALE
 (245) 1/113078241047478