

ASPEN MEADOWS - UNIT TWO

Recorded in Book 98 Page 81 of Plats

200 Scale Map Location: K-35-4

Fire Dept. District Map # 2413:48

MASTER SITE ADDRESS: 521 POPLAR LEAF ST

BLOCK 1	LOT	18	526	POPLAR LEAF ST	N/S	PRIVATE STREET
		19	530			
		20	534			
		21	538			
		22	542			
		23	546			
		24	550			
		25	554			
		26	558			
		27	562			
		28	566			
		29	570			
		30	574			
		31	578			
		32	584			
		33	588			
BLOCK 2	LOT	34	11001	MEADOW LEAF AVE	E/W	PRIVATE STREET
		35	11005			
		36	11009			
		37	11013			
		38	11017			
		39	11021			
		40	11025			
		41	11029			
		42	11033			
BLOCK 3	LOT	77	11032	MEADOW LEAF AVE	E/W	PRIVATE STREET
		78	11028			
		79	11024			
		80	11020			
		81	11016			
		82	11012			
BLOCK 3	LOT	83	573	POPLAR LEAF ST	N/S	PRIVATE STREET
		84	569			
		85	565			
		86	561			
		87	557			
BLOCK 3	LOT	88	11011	MIMOSA LEAF CT	E/W	PRIVATE STREET
		89	11015			
		90	11019			
		91	11023			
		92	11027			
		93	11031			
		94	11030			
		95	11026			
		96	11022			

ASPEN MEADOWS - UNIT TWO

BLOCK 3	LOT	97	11018	MIMOSA LEAF CT	E/W	PRIVATE STREET
		98	11014			
		99	11010			
BLOCK 3	LOT	100	551	POPLAR LEAF ST	N/S	PRIVATE STREET
		101	547			
		102	543			
		103	539			
		104	535			
		105	531			
Common Area	A	580	POPLAR LEAF ST	N/S	PRIVATE STREET	

ORIGINAL DATE: 3/08/2001

**CITY OF LAS VEGAS
PLANNING & DEVELOPMENT DEPARTMENT**



DAVID R BRATCHER, SR PLANNER

ASPEN MEADOWS - UNIT TWO

Recorded in Book 98 Page 81 of Plats

200 Scale Map Location: K-35-4

Fire Dept. District Map # 2413:48

MASTER SITE ADDRESS: 521 POPLAR LEAF ST

BLOCK 1	LOT	18	526	POPLAR LEAF ST	N/S	PRIVATE STREET
		19	530			
		20	534			
		21	538			
		22	542			
		23	546			
		24	550			
		25	554			
		26	558			
		27	562			
		28	566			
		29	570			
		30	574			
		31	578			
32	584					
33	588					
BLOCK 2	LOT	34	11001	MEADOW LEAF AVE	E/W	PRIVATE STREET
		35	11005			
		36	11009			
		37	11013			
		38	11017			
		39	11021			
		40	11025			
		41	11029			
		42	11033			
BLOCK 3	LOT	77	11032	MEADOW LEAF AVE	E/W	PRIVATE STREET
		78	11028			
		79	11024			
		80	11020			
		81	11016			
		82	11012			
BLOCK 3	LOT	83	573	POPLAR LEAF ST	N/S	PRIVATE STREET
		84	569			
		85	565			
		86	561			
		87	557			
BLOCK 3	LOT	88	11011	MIMOSA LEAF CT	E/W	PRIVATE STREET
		89	11015			
		90	11019			
		91	11023			
		92	11027			
		93	11031			
		94	11030			
		95	11026			
		96	11022			

ASPEN MEADOWS - UNIT TWO

BLOCK 3	LOT	97	11018	MIMOSA LEAF CT	E/W	PRIVATE STREET
		98	11014			
		99	11010			
BLOCK 3	LOT	100	551	POPLAR LEAF ST	N/S	PRIVATE STREET
		101	547			
		102	543			
		103	539			
		104	535			
		105	531			
Common Area	A	580		POPLAR LEAF ST	N/S	PRIVATE STREET

ORIGINAL DATE: 3/08/2001

**CITY OF LAS VEGAS
PLANNING & DEVELOPMENT DEPARTMENT**



DAVID R BRATCHER, SR PLANNER

ASPEN MEADOWS - UNIT TWO

Recorded in Book 98 Page 81 of Plats

200 Scale Map Location: K-35-4

Fire Dept. District Map # 2413:48

MASTER SITE ADDRESS: 521 POPLAR LEAF ST

BLOCK 1	LOT	18	526	POPLAR LEAF ST	N/S	PRIVATE STREET
		19	530			
		20	534			
		21	538			
		22	542			
		23	546			
		24	550			
		25	554			
		26	558			
		27	562			
		28	566			
		29	570			
		30	574			
		31	578			
		32	584			
		33	588			
BLOCK 2	LOT	34	11001	MEADOW LEAF AVE	E/W	PRIVATE STREET
		35	11005			
		36	11009			
		37	11013			
		38	11017			
		39	11021			
		40	11025			
		41	11029			
		42	11033			
BLOCK 3	LOT	77	11032	MEADOW LEAF AVE	E/W	PRIVATE STREET
		78	11028			
		79	11024			
		80	11020			
		81	11016			
		82	11012			
BLOCK 3	LOT	83	573	POPLAR LEAF ST	N/S	PRIVATE STREET
		84	569			
		85	565			
		86	561			
		87	557			
BLOCK 3	LOT	88	11011	MIMOSA LEAF CT	E/W	PRIVATE STREET
		89	11015			
		90	11019			
		91	11023			
		92	11027			
		93	11031			
		94	11030			
		95	11026			
		96	11022			

ASPEN MEADOWS - UNIT TWO

BLOCK 3	LOT	97	11018	MIMOSA LEAF CT	E/W	PRIVATE STREET
		98	11014			
		99	11010			
BLOCK 3	LOT	100	551	POPLAR LEAF ST	N/S	PRIVATE STREET
		101	547			
		102	543			
		103	539			
		104	535			
		105	531			
Common Area	A	580		POPLAR LEAF ST	N/S	PRIVATE STREET

ORIGINAL DATE: 3/08/2001

**CITY OF LAS VEGAS
PLANNING & DEVELOPMENT DEPARTMENT**



DAVID R BRATCHER, SR PLANNER

ASPEN MEADOWS - UNIT TWO

Recorded in Book 98 Page 81 of Plats

200 Scale Map Location: K-35-4

Fire Dept. District Map # 2413:48

MASTER SITE ADDRESS: 521 POPLAR LEAF ST

BLOCK 1	LOT	18	526	POPLAR LEAF ST	N/S	PRIVATE STREET
		19	530			
		20	534			
		21	538			
		22	542			
		23	546			
		24	550			
		25	554			
		26	558			
		27	562			
		28	566			
		29	570			
		30	574			
		31	578			
32	584					
33	588					
BLOCK 2	LOT	34	11001	MEADOW LEAF AVE	E/W	PRIVATE STREET
		35	11005			
		36	11009			
		37	11013			
		38	11017			
		39	11021			
		40	11025			
		41	11029			
		42	11033			
BLOCK 3	LOT	77	11032	MEADOW LEAF AVE	E/W	PRIVATE STREET
		78	11028			
		79	11024			
		80	11020			
		81	11016			
		82	11012			
BLOCK 3	LOT	83	573	POPLAR LEAF ST	N/S	PRIVATE STREET
		84	569			
		85	565			
		86	561			
		87	557			
BLOCK 3	LOT	88	11011	MIMOSA LEAF CT	E/W	PRIVATE STREET
		89	11015			
		90	11019			
		91	11023			
		92	11027			
		93	11031			
		94	11030			
		95	11026			
		96	11022			

ASPEN MEADOWS - UNIT TWO

BLOCK 3	LOT	97	11018	MIMOSA LEAF CT	E/W	PRIVATE STREET
		98	11014			
		99	11010			
BLOCK 3	LOT	100	551	POPLAR LEAF ST	N/S	PRIVATE STREET
		101	547			
		102	543			
		103	539			
		104	535			
		105	531			
Common Area	A	580		POPLAR LEAF ST	N/S	PRIVATE STREET

ORIGINAL DATE: 3/08/2001

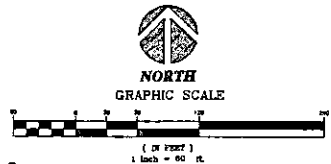
**CITY OF LAS VEGAS
PLANNING & DEVELOPMENT DEPARTMENT**



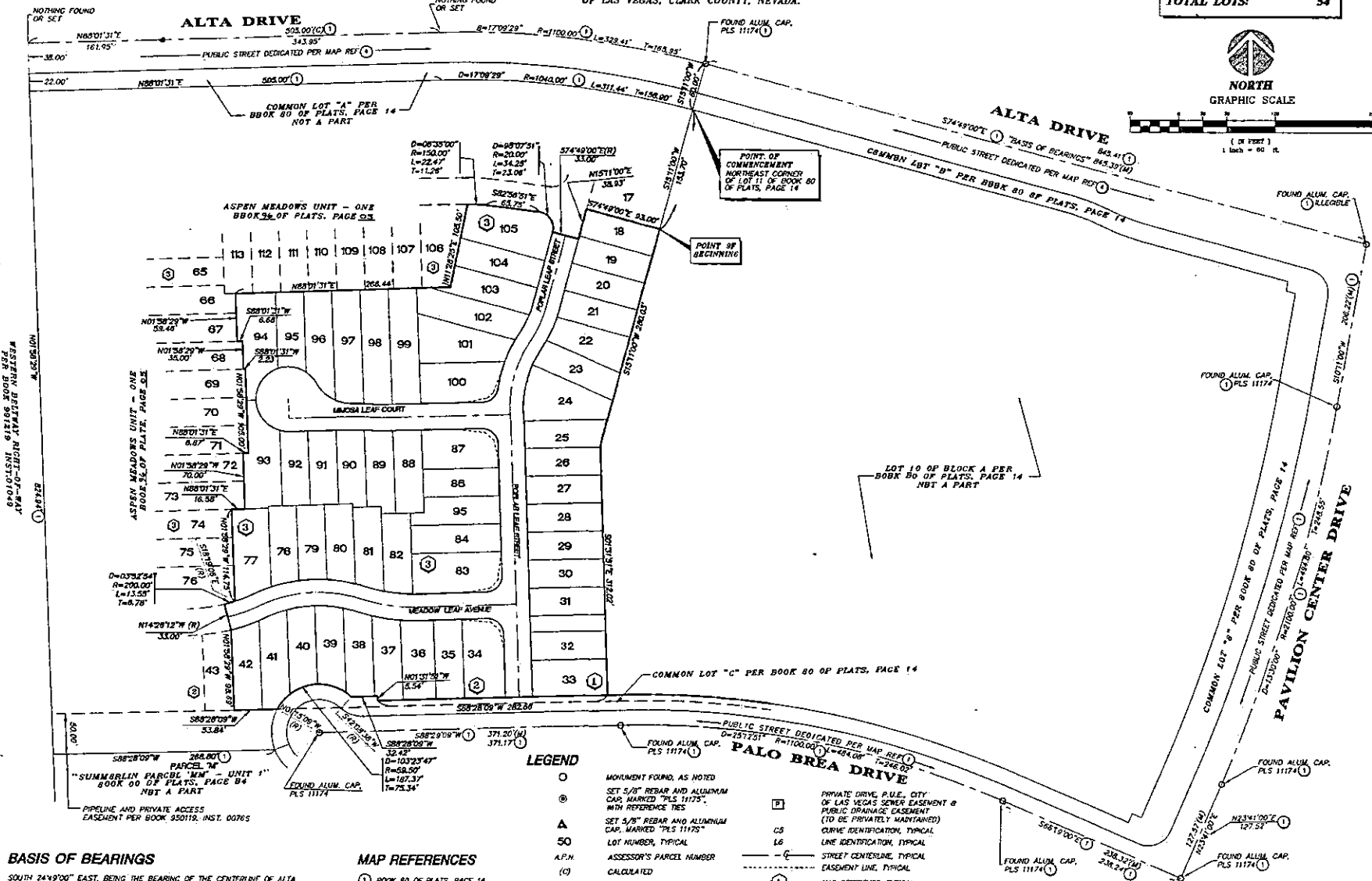
DAVID R BRATCHER, SR PLANNER

**FINAL MAP OF
ASPEN MEADOWS - UNIT TWO**
A PORTION OF LOT 11 OF BLOCK 'A' OF BOOK 80 OF PLATS,
PAGE 14, LYING WITHIN THE SOUTH HALF (S 1/2) OF THE NORTHEAST QUARTER
(NE 1/4) OF SECTION 35, TOWNSHIP 20 SOUTH, RANGE 50 EAST, M.D.K. CITY
OF LAS VEGAS, CLARK COUNTY, NEVADA.

TOTAL AREA: 5.87 Acres
TOTAL LOTS: 54



File Copy



BASIS OF BEARINGS
SOUTH 24°49'00" EAST, BEING THE BEARING OF THE CENTERLINE OF ALTA DRIVE, AS SHOWN ON SHEET 9 OF 13 OF BOOK 80 OF PLATS, PAGE 14, OFFICIAL RECORDS OF CLARK COUNTY, NEVADA.

- MAP REFERENCES**
- ① BOOK 80 OF PLATS, PAGE 14
 - ② FILE 73 OF PARCEL MAPS, PAGE 09
 - ③ FILE 04 OF PARCEL MAPS, PAGE 70
 - ④ BOOK 75 OF PLATS, PAGE 75
 - ⑤ BOOK 63 OF PLATS, PAGE 64

- LEGEND**
- MOVEMENT FOUND, AS NOTED
 - ⊙ SET 5/8" REBAR AND ALUMINUM CAP, MARKED "PLS 11175", WITH REFERENCE TIES
 - △ SET 5/8" REBAR AND ALUMINUM CAP, MARKED "PLS 11175"
 - A LOT NUMBER, TYPICAL
 - A.P.N. ASSESSOR'S PARCEL NUMBER
 - (C) CALCULATED
 - (M) MEASURED
 - (R) RADIAL BEARING, TYPICAL
 - S.F. SQUARE FEET
 - P.U.E. PUBLIC UTILITY EASEMENT
 - TYP. TYPICAL
 - U.E. UTILITY EASEMENT
 - ① BLOCK NUMBER, TYPICAL
 - PRIVATE DRIVE, P.U.E., CITY OF LAS VEGAS SEWER EASEMENT & PUBLIC DRAINAGE EASEMENT (TO BE PRIVATELY MAINTAINED)
 - CS CURVE IDENTIFICATION, TYPICAL
 - L6 LINE IDENTIFICATION, TYPICAL
 - C- STREET CENTERLINE, TYPICAL
 - E- EASEMENT LINE, TYPICAL
 - MAP REFERENCE, TYPICAL
 - - - LOT LINE, TYPICAL
 - - - SUBDIVISION BOUNDARY LINE
 - - - SIGHT VISIBILITY RESTRICTION ZONE - NO LANDSCAPING OR SIGHT RESTRICTING IMPROVEMENTS (SUCH AS BILLS OR FENCES) TALLER THAN 24 INCHES ALLOWED WITHIN THE SHADED AREAS - TO BE PRIVATELY MAINTAINED.
 - S.V.R.Z.

CVL CONSULTANTS, INC.
6350 E. Valley View Blvd., Suite 200
Las Vegas, NV 89118
Tel: 702-368-3008
Fax: 702-368-0067

FM-28-00

Date: 2/2000
Drawn by: LDB
Checked by: C. Cano
Job Number: 99-9063-03
SHEET 2 of 4

Book 98 - Page 81

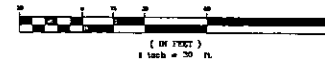
20010308

**FINAL MAP OF
ASPEN MEADOWS - UNIT TWO**
A PORTION OF LOT 11 OF BLOCK 'A' OF BOOK 89 OF PLATS,
PAGE 14, LYING WITHIN THE SOUTH HALF (S 1/2) OF THE NORTHEAST QUARTER
(NE 1/4) OF SECTION 35, TOWNSHIP 20 SOUTH, RANGE 59 EAST, M.D.M., CITY OF
LAS VEGAS, CLARK COUNTY, NEVADA.

TOTAL AREA: 5.87 Acres
TOTAL LOTS: 54



GRAPHIC SCALE



RADIAL LINE TABLE

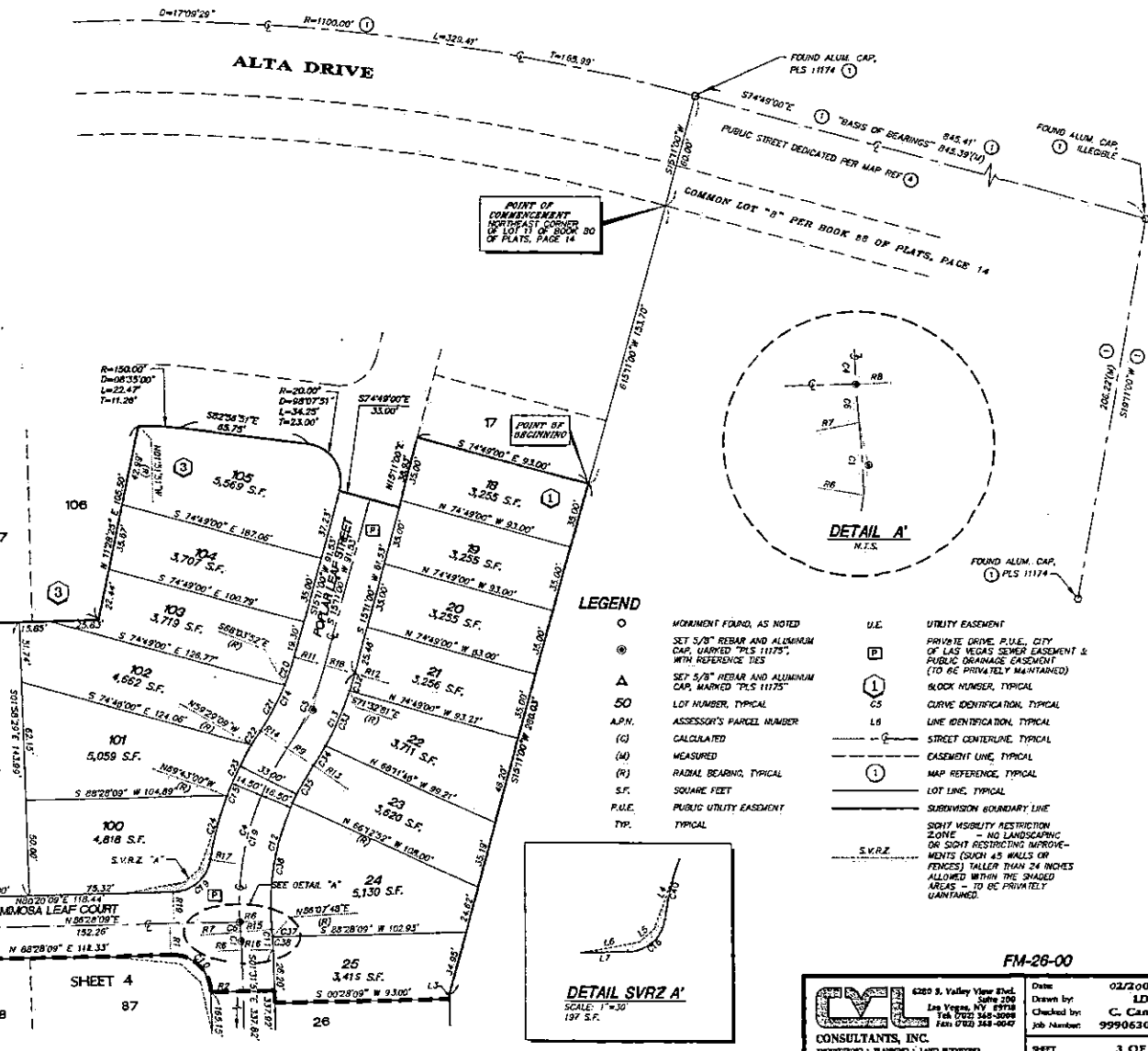
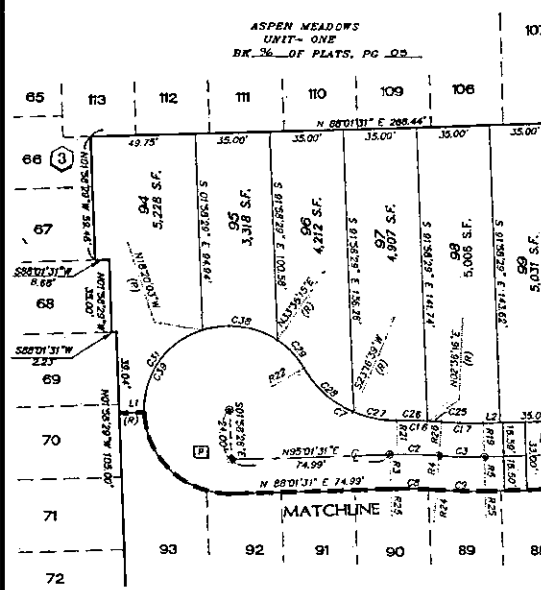
LINE	BEARING
R1	N01°31'51"W
R2	N82°28'02"E
R3	N01°56'29"W
R4	N04°15'42"E
R5	S01°31'51"E
R6	N82°28'02"E
R7	N84°44'36"E
R8	S86°42'03"W
R9	N82°24'31"W
R10	S74°48'00"E
R11	S74°48'00"E
R12	S74°48'00"E
R13	N52°24'43"W
R14	S56°24'43"E
R15	S84°44'36"W
R16	N58°28'02"E
R17	S81°41'29"E
R18	S01°31'51"E
R19	S01°31'51"E
R20	N04°15'42"E
R21	S00°58'34"E
R22	S60°12'49"W
R23	N01°56'29"W
R24	N04°15'42"E
R25	S01°31'51"E

CURVE TABLE

CURVE	RADIUS	DELTA	LENGTH	RANGE
C1	150.00	03°43'35"	9.75	4.88
C2	216.50	06°41'11"	23.50	11.73
C3	216.50	05°42'33"	21.69	10.95
C4	150.00	05°31'14"	28.27	50.01
C5	150.00	18°24'17"	48.18	24.50
C6	150.00	21°22'27"	51.22	6.58
C7	50.00	61°02'43"	53.25	29.74
C8	200.00	06°14'11"	21.77	10.50
C9	233.00	04°27'33"	23.26	11.72
C10	200.00	02°50'00"	31.22	20.00
C11	166.50	03°41'41"	19.61	4.42
C12	133.50	04°50'41"	20.51	47.07
C13	166.50	18°24'17"	23.48	26.97
C14	133.50	18°24'17"	22.89	21.61
C15	166.50	21°24'51"	23.44	27.34
C16	20.00	92°09'38"	27.98	16.81
C17	200.00	04°27'33"	20.22	10.12
C18	233.00	05°14'18"	21.30	10.66
C19	150.00	38°52'11"	101.20	52.09
C20	133.50	04°50'28"	19.23	7.81
C21	133.50	11°39'09"	27.15	13.67
C22	166.50	03°04'28"	8.23	4.47
C23	166.50	10°12'31"	26.73	14.90
C24	166.50	11°02'52"	14.00	17.60
C25	233.00	01°39'26"	6.74	1.37
C26	233.00	03°14'50"	14.56	7.28
C27	50.00	24°51'13"	21.77	10.74
C28	50.00	38°52'11"	72.03	18.87
C29	40.50	28°23'33"	18.68	8.50
C30	40.50	21°58'19"	16.75	19.75
C31	40.50	23°38'26"	32.05	30.37
C32	166.50	03°16'59"	7.54	4.77
C33	166.50	10°52'27"	17.75	15.92
C34	166.50	04°17'50"	14.20	6.10
C35	133.50	03°48'09"	22.84	11.45
C36	133.50	28°02'25"	67.67	34.59
C37	166.50	01°01'12"	4.07	2.02
C38	166.50	02°20'21"	6.80	4.40
C39	40.50	24°20'19"	171.08	67.17
C40	166.50	11°18'32"	32.05	16.49

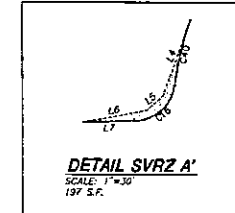
LINE TABLE

LINE	LENGTH	BEARING
L1	11.78	S88°01'31"W
L2	8.12	N88°28'09"E
L3	9.41	S01°31'51"E
L4	39.32	S02°14'44"W
L5	10.30	N45°23'20"E
L6	30.62	N79°25'14"E
L7	24.32	N88°28'09"E



LEGEND

- MONUMENT FOUND, AS NOTED
- ⊙ SET 5/8" REBAR AND ALUMINUM CAP, MARKED "PLS 11173", WITH REFERENCE TIES
- △ SET 5/8" REBAR AND ALUMINUM CAP, MARKED "PLS 11175"
- 50 LOT NUMBER, TYPICAL
- A.P.N. ASSESSOR'S PARCEL NUMBER
- (C) CALCULATED
- (M) MEASURED
- (R) RADIAL BEARING, TYPICAL
- S.F. SQUARE FEET
- P.U.E. PUBLIC UTILITY EASEMENT
- TR. TYPICAL
- U.E. UTILITY EASEMENT
- P PRIVATE DRIVE P.U.E., CITY OF LAS VEGAS SEWER EASEMENT & PUBLIC DRAINAGE EASEMENT (TO BE PRIVATELY MAINTAINED)
- Ⓛ BLOCK NUMBER, TYPICAL
- C.S. CURVE IDENTIFICATION, TYPICAL
- L.B. LINE IDENTIFICATION, TYPICAL
- STREET CENTERLINE, TYPICAL
- CASEMENT LINE, TYPICAL
- Ⓛ MAP REFERENCE, TYPICAL
- LOT LINE, TYPICAL
- SUBDIVISION BOUNDARY LINE
- S.V.R.Z. SIGHT VISIBILITY RESTRICTION ZONE - NO LANDSCAPING OR SIGHT RESTRICTING IMPROVEMENTS (SUCH AS WALLS OR FENCES) TALLER THAN 24 INCHES ALLOWED WITHIN THE SHADDED AREAS - TO BE PRIVATELY MAINTAINED.

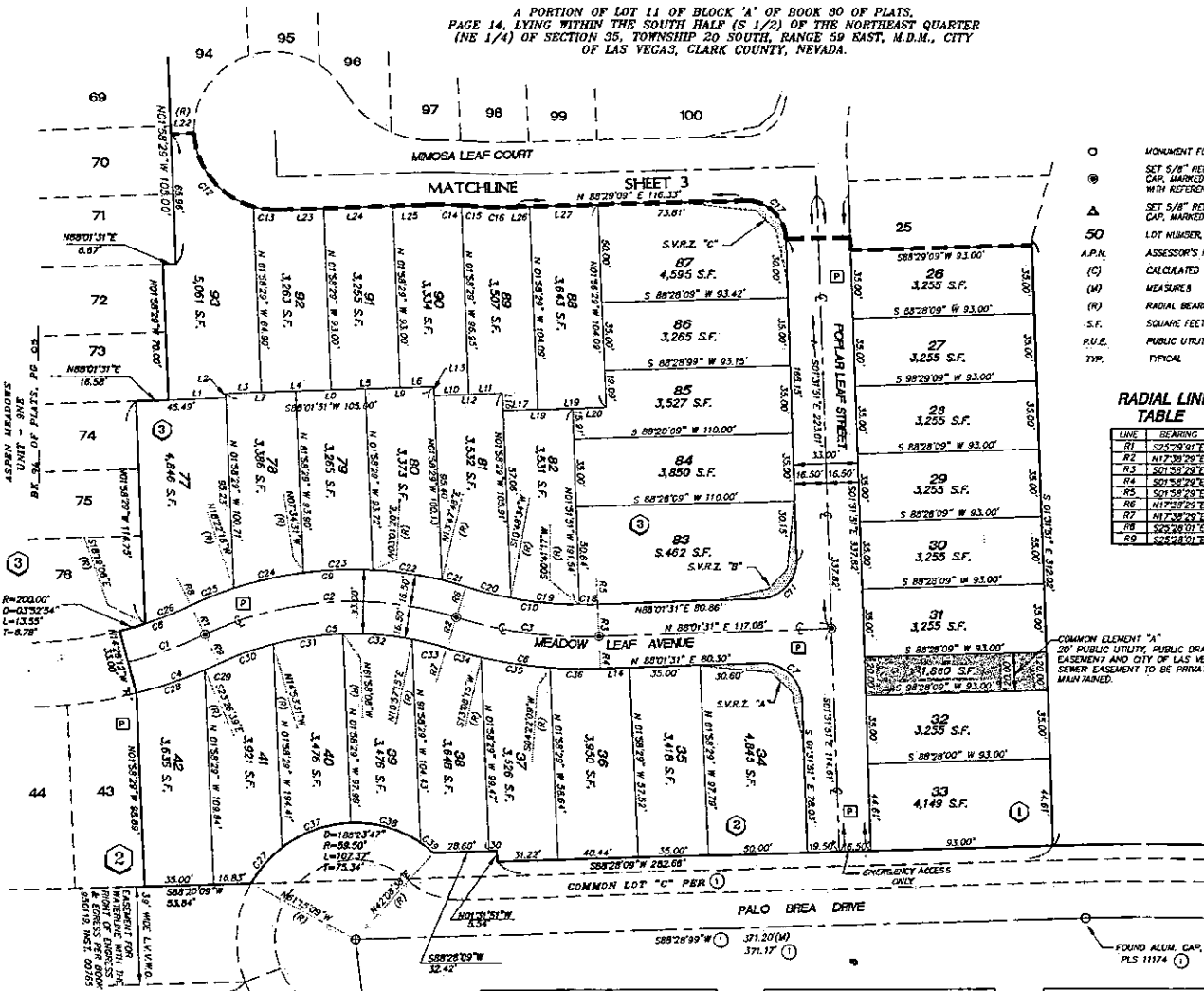
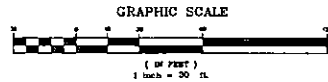


FM-26-00

<p>ML CONSULTANTS, INC. ENGINEERING • PLANNING • LAND DEVELOPMENT</p>	6265 S. Valley View Blvd. Suite 206 Las Vegas, NV 89118 Tel: 702-348-3098 Fax: 702-348-4047	Date: 02/20/00 Drawn by: LDB Checked by: C. Cano Job Number: 99906303
	SHEET 3 OF 4	

20010308
Page 08

**FINAL MAP OF
ASPEN MEADOWS - UNIT TWO**
A PORTION OF LOT 11 OF BLOCK 'A' OF BOOK 80 OF PLATS,
PAGE 14, LYING WITHIN THE SOUTH HALF (S 1/2) OF THE NORTHEAST QUARTER
(NE 1/4) OF SECTION 35, TOWNSHIP 20 SOUTH, RANGE 59 EAST, M.D.M., CITY
OF LAS VEGAS, CLARK COUNTY, NEVADA.



LEGEND

- MONUMENT FOUND, AS NOTED
- ⊙ SET 5/8" REBAR AND ALUMINUM CAP, MARKED "PLS 1175", WITH REFERENCE TIES
- △ SET 5/8" REBAR AND ALUMINUM CAP, MARKED "PLS 1175"
- 50 LOT NUMBER, TYPICAL
- A.P.N. ASSessor'S PARCEL NUMBER
- (C) CALCULATED
- (M) MEASURES
- (R) RADIAL BEARING, TYPICAL
- S.F. SQUARE FEET
- P.U.E. PUBLIC UTILITY EASEMENT
- TYP. TYPICAL
- U.E. UTILITY EASEMENT
- P PRIVATE DRIVE, P.U.E., CITY OF LAS VEGAS SEWER EASEMENT & PUBLIC DRAINAGE EASEMENT (TO BE PRIVATELY MAINTAINED)
- Ⓛ BLOCK NUMBER, TYPICAL
- C5 CURVE IDENTIFICATION, TYPICAL
- L6 LINE IDENTIFICATION, TYPICAL
- STREET CENTERLINE, TYPICAL
- EASEMENT LINE, TYPICAL
- ① MAP REFERENCE, TYPICAL
- LOT LINE, TYPICAL
- SUBDIVISION BOUNDARY LINE
- S.V.R.Z. SOFT MOBILITY RESTRICTION ZONE, NO LANDSCAPING OR SOFT RESTRICTING IMPROVEMENTS (SUCH AS WALLS OR FENCES) TALLER THAN 24 INCHES ALLOWED WITHIN THE SHADDED AREAS - TO BE PRIVATELY MAINTAINED.

RADIAL LINE TABLE

LINE	BEARING
R1	S25°29'01"E
R2	N17°30'20"E
R3	S01°58'29"W
R4	S01°58'29"E
R5	S01°58'29"W
R6	N17°30'20"E
R7	N17°30'20"E
R8	S01°58'29"E
R9	S25°29'01"E

LINE TABLE

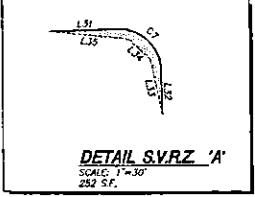
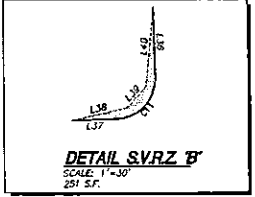
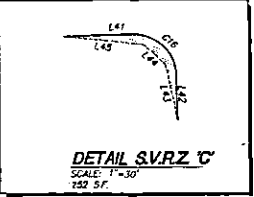
LINE	LENGTH	BEARING
L1	25.51	N87°01'31"E
L2	2.46	N01°58'29"W
L3	17.25	S88°01'31"W
L4	35.00	S88°01'31"W
L5	35.00	S88°01'31"W
L6	17.25	S88°01'31"W
L7	35.00	S88°01'31"W
L8	35.00	S88°01'31"W
L9	35.00	S88°01'31"W
L10	17.25	N88°01'31"E
L11	17.25	N88°01'31"E
L12	35.00	N88°01'31"E
L13	5.74	N01°58'29"W
L14	14.70	N87°01'31"E
L15	200.00	N01°58'29"W
L16	0.04	N01°58'29"W
L17	17.25	N88°28'09"E
L18	35.00	N88°28'09"E
L19	35.00	N88°28'09"E
L20	17.00	N88°28'09"E
L21	35.00	N88°28'09"E
L22	11.75	S88°01'31"W
L23	22.74	N88°01'31"E
L24	35.00	N88°01'31"E
L25	17.25	N88°01'31"E
L26	7.82	S88°28'09"E
L27	35.00	N88°28'09"E
L28	35.00	S88°28'09"E
L29	39.80	N88°01'31"E
L30	16.31	S46°42'01"E
L31	58.14	S87°01'31"E
L32	21.04	S01°51'51"E
L33	27.27	N17°28'48"W
L34	186.31	S46°42'01"E
L35	58.14	S87°01'31"E
L36	33.15	S01°51'51"E
L37	22.15	N88°01'31"E
L38	77.65	N77°36'24"E
L39	33.89	N43°14'50"E
L40	48.52	S02°55'39"W
L41	33.00	N88°28'09"E
L42	22.00	S01°51'51"E
L43	22.48	N17°01'20"W
L44	14.14	S87°15'17"E
L45	38.33	S24°02'08"E

CURVE TABLE

CURVE	RADIUS	90°TA	LENGTH	ANGENT
C1	276.20	11°14'21"	41.61'	30.90'
C2	173.00	43°06'30"	130.16'	68.54'
C3	219.50	18°36'58"	74.12'	37.45'
C4	233.00	11°09'49"	44.88'	32.50'
C5	156.50	43°06'30"	113.23'	61.82'
C6	233.00	18°36'58"	79.71'	40.75'
C7	260.00	8°06'58"	31.57'	20.16'
C8	200.00	11°01'49"	38.50'	19.31'
C9	169.50	43°06'30"	122.58'	74.69'
C10	200.00	19°05'58"	68.91'	34.97'
C11	20.00	88°32'22"	31.26'	18.85'
C12	46.50	72°22'20"	51.16'	29.63'
C13	40.50	17°31'10"	12.25'	8.29'
C14	200.00	05°03'11"	12.77'	6.89'
C15	200.00	N01°58'29"W	4.60'	2.60'
C16	233.00	05°47'53"	23.56'	11.75'
C17	200.00	S01°00'00"E	31.42'	20.00'
C18	200.00	23°19'41"	9.29'	4.68'
C19	200.00	10°07'27"	38.53'	17.71'
C20	200.00	08°48'55"	23.85'	11.94'
C21	199.50	01°50'41"	12.72'	6.36'
C22	188.50	10°45'28"	35.64'	17.97'
C23	192.50	10°33'51"	35.05'	17.50'
C24	182.50	10°47'49"	35.71'	17.61'
C25	189.50	07°05'43"	23.47'	11.75'
C26	200.00	07°08'35"	28.25'	12.49'
C27	89.50	21°18'08"	24.18'	12.25'
C28	233.00	09°00'27"	36.83'	19.31'
C29	233.00	02°01'23"	8.21'	4.41'
C30	186.50	10°34'30"	28.28'	14.45'
C31	156.50	12°58'22"	35.30'	17.72'
C32	156.50	12°58'23"	35.30'	17.72'
C33	156.50	08°41'14"	18.27'	9.14'
C34	233.00	04°20'14"	10.14'	5.16'
C35	233.00	08°48'58"	28.28'	14.45'
C36	233.00	08°20'18"	25.80'	12.91'
C37	59.50	36°01'41"	37.41'	19.15'
C38	59.50	35°02'20"	37.42'	19.15'
C39	59.50	08°03'59"	8.28'	4.20'

MAP REFERENCES

- ① BOOK 80 OF PLATS, PAGE 14
- ② FILE 73 OF PARCEL MAPS, PAGE 89
- ③ FILE 04 OF PARCEL MAPS, PAGE 70
- ④ BOOK 75 OF PLATS, PAGE 75
- ⑤ BOOK 93 OF PLATS, PAGE 44



FM-26-00

CML CONSULTANTS, INC.
2289 S. Valley View Blvd., Suite 200
Las Vegas, NV 89178
Tel: 702 368-0000
Fax: 702 368-0047

Date: 02/2000
Drawn by: LDB
Checked by: C. Cano
Job Number: 99906303
SHEET 4 OF 4

Book 78-81
Page