

RANCHO ALTA MIRA
LOT 11 - UNIT A

APRIL 6, 1993

FIRE MAP #1821::18,19
200 MAP: L-1-2

BLOCK 3	LOT	12	4709	VICTORIA BEACH WAY	N/S	PUBLIC STREET
		13	4713			
		14	4717			
		15	4721			
		16	4725			

BLOCK 4	LOT	1	4908	CRIMSON GLORY LANE	E/W	PUBLIC STREET
		2	4904			
NOT		3	4900	NO LONGER		
		4	4824			
A		5	4820	A PART		
		6	4816			
PART		7	4812			
		8	4808			
		9	4804			
		10	4800			
BLOCK 4	LOT	11	4728	STANDING BLUFF WAY	N/S	PUBLIC STREET
		12	4724			
NOT A		13	4720			
		14	4716			
PART		15	4712	THIS PORTION		
		16	4708	HAS BEEN AMENDED		


BLOCK 5	LOT	1	4805	CRIMSON GLORY LANE	E/W	PUBLIC STREET
		2	4809			
		3	4813			
		4	4817			
		5	4821			

BLOCK 5	LOT	6	4724	VICTORIA BEACH WAY	N/S	PUBLIC STREET
		7	4720			
		8	4716			
		9	4712			
		10	4708			

BLOCK 5	LOT	51	4801	BAFFIN COURT	E/W	PUBLIC STREET
		52	4805			
		53	4809			
		54	4813			
		55	4816			
		56	4812			
		57	4808			
		58	4804			
		59	4800			

COMMON AREA LOT	11B	4803	LONE MOUNTAIN ROAD	E/W	PUBLIC STREET
STREET WITH NO ADDRESSES:			DECATUR BOULEVARD	N/S	PUBLIC STREET

CITY OF LAS VEGAS
DEPARTMENT OF COMMUNITY
PLANNING & DEVELOPEMNT

 MATT PINJUV, PLANNER

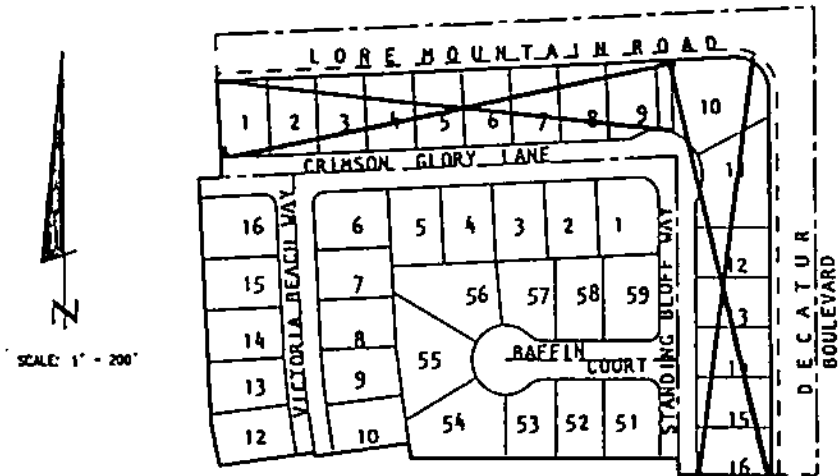
MP/dr

MASTER SUBDIVISION ADDRESS: 4914 CRIMSON GLORY LANE

SEE THE LIST FOR AMENDED MAP OF RANCHO ALTA MIRA LOT 11 - UNIT A
(dated October 14, 1993)

RANCHO ALTA MIRA LOT 11

UNIT A



RANCHO ALTA MIRA
LOT 11 - UNIT A

APRIL 6, 1993

FIRE MAP #1821::18,19
200 MAP: L-1-2

BLOCK 3	LOT	12	4709	VICTORIA BEACH WAY	N/S	PUBLIC STREET
		13	4713			
		14	4717			
		15	4721			
		16	4725			

BLOCK 4	LOT	1	4908	CRIMSON GLORY LANE	E/W	PUBLIC STREET
		2	4904			
NOT		3	4900	NO LONGER		
		4	4824			
A		5	4820	A PART		
		6	4816			
PART		7	4812			
		8	4808			
		9	4804			
		10	4800			
BLOCK 4	LOT	11	4728	STANDING BLUFF WAY	N/S	PUBLIC STREET
		12	4724			
NOT A		13	4720			
		14	4716			
PART		15	4712	THIS PORTION		
		16	4708	HAS BEEN AMENDED		


BLOCK 5	LOT	1	4805	CRIMSON GLORY LANE	E/W	PUBLIC STREET
		2	4809			
		3	4813			
		4	4817			
		5	4821			

BLOCK 5	LOT	6	4724	VICTORIA BEACH WAY	N/S	PUBLIC STREET
		7	4720			
		8	4716			
		9	4712			
		10	4708			

BLOCK 5	LOT	51	4801	BAFFIN COURT	E/W	PUBLIC STREET
		52	4805			
		53	4809			
		54	4813			
		55	4816			
		56	4812			
		57	4808			
		58	4804			
		59	4800			

COMMON AREA LOT	I18	4803	LONE MOUNTAIN ROAD	E/W	PUBLIC STREET
STREET WITH NO ADDRESSES:			DECATUR BOULEVARD	N/S	PUBLIC STREET

CITY OF LAS VEGAS
DEPARTMENT OF COMMUNITY
PLANNING & DEVELOPEMNT

 MATT PINJUY, PLANNER

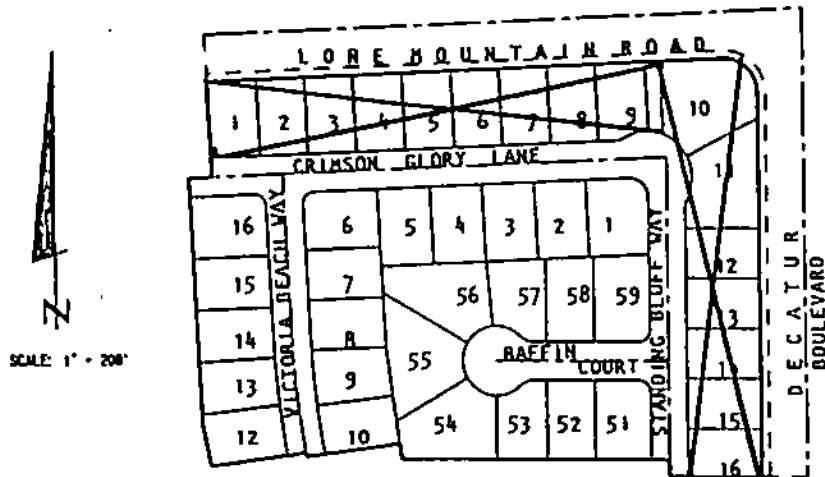
MP/dr

MASTER SUBDIVISION ADDRESS: 4914 CRIMSON GLORY LANE

SEE THE LIST FOR AMENDED MAP OF RANCHO ALTA MIRA LOT 11 - UNIT A
(dated October 14, 1993)

RANCHO ALTA MIRA LOT 11

UNIT A



RANCHO ALTA MIRA
LOT 11 - UNIT A

APRIL 6, 1993

FIRE MAP #1821::18,19
200 MAP: L-1-2

BLOCK 3 LOT 12 4709 VICTORIA BEACH WAY N/S PUBLIC STREET
 13 4713
 14 4717
 15 4721
 16 4725

BLOCK 4 LOT 1 4908 CRIMSON GLORY LANE E/W PUBLIC STREET
 2 4904
NOT 3 4900 NO LONGER
 4 4824
A 5 4820 A PART
 6 4816
PART 7 4812
 8 4808
 9 4804
 10 4800
BLOCK 4 LOT 11 4728 STANDING BLUFF WAY N/S PUBLIC STREET
 12 4724
NOT A 13 4720
 14 4716
PART 15 4712 THIS PORTION
 16 4708 HAS BEEN AMENDED

BLOCK 5 LOT 1 4805 CRIMSON GLORY LANE E/W PUBLIC STREET
 2 4809
 3 4813
 4 4817
 5 4821

BLOCK 5 LOT 6 4724 VICTORIA BEACH WAY N/S PUBLIC STREET
 7 4720
 8 4716
 9 4712
 10 4708

BLOCK 5 LOT 51 4801 BAFFIN COURT E/W PUBLIC STREET
 52 4805
 53 4809
 54 4813
 55 4816
 56 4812
 57 4808
 58 4804
 59 4800

COMMON AREA LOT 11B 4803 LONE MOUNTAIN ROAD E/W PUBLIC STREET
STREET WITH NO ADDRESSES: DECATUR BOULEVARD N/S PUBLIC STREET

CITY OF LAS VEGAS
DEPARTMENT OF COMMUNITY
PLANNING & DEVELOPEMNT

 MATT PINJUV, PLANNER

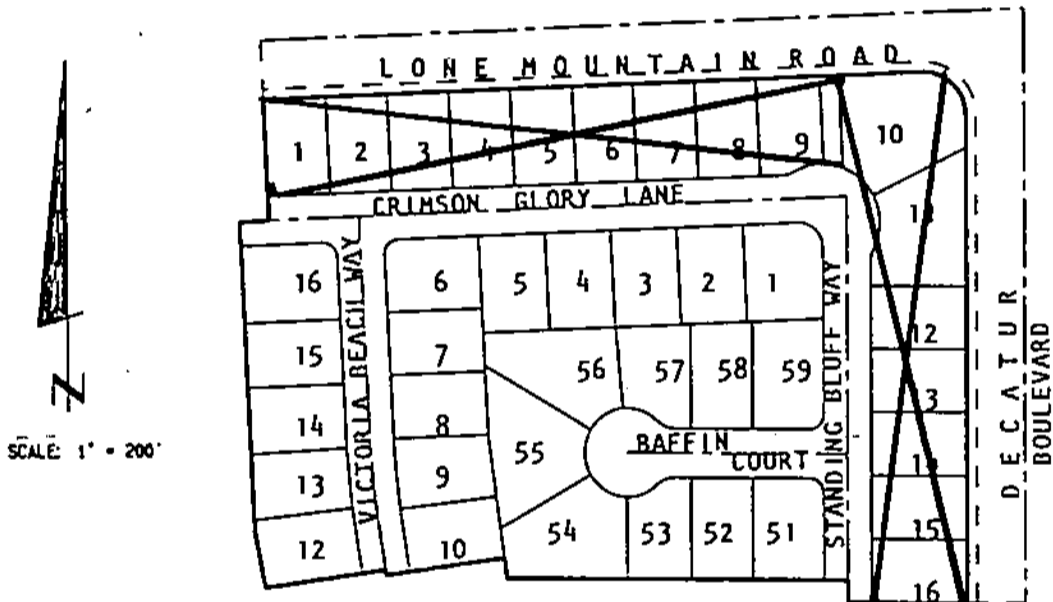
MP/dr

MASTER SUBDIVISION ADDRESS: 4914 CRIMSON GLORY LANE

SEE THE LIST FOR AMENDED MAP OF RANCHO ALTA MIRA LOT 11 - UNIT A
(dated October 14, 1993)

RANCHO ALTA MIRA LOT 11

UNIT A



RANCHO ALTA MIRA
 LOT 11 - UNIT A

APRIL 6, 1993

FIRE MAP #1821::18,19
 200 MAP: L-1-2

BLOCK 3	LOT	12	4709	VICTORIA BEACH WAY	N/S	PUBLIC STREET
		13	4713			
		14	4717			
		15	4721			
		16	4725			

BLOCK 4	LOT	1	4908	CRIMSON GLORY LANE	E/W	PUBLIC STREET
		2	4904			
NOT		3	4900	NO LONGER		
		4	4824			
A		5	4820	A PART		
		6	4816			
PART		7	4812			
		8	4808			
		9	4804			
		10	4800			
BLOCK 4	LOT	11	4728	STANDING BLUFF WAY	N/S	PUBLIC STREET
		12	4724			
NOT A		13	4720			
		14	4716			
PART		15	4712	THIS PORTION		
		16	4708	HAS BEEN AMENDED		


BLOCK 5	LOT	1	4805	CRIMSON GLORY LANE	E/W	PUBLIC STREET
		2	4809			
		3	4813			
		4	4817			
		5	4821			

BLOCK 5	LOT	6	4724	VICTORIA BEACH WAY	N/S	PUBLIC STREET
		7	4720			
		8	4716			
		9	4712			
		10	4708			

BLOCK 5	LOT	51	4801	BAFFIN COURT	E/W	PUBLIC STREET
		52	4805			
		53	4809			
		54	4813			
		55	4816			
		56	4812			
		57	4808			
		58	4804			
		59	4800			

COMMON AREA LOT	11B	4803	LONE MOUNTAIN ROAD	E/W	PUBLIC STREET
STREET WITH NO ADDRESSES:			DECATUR BOULEVARD	N/S	PUBLIC STREET

CITY OF LAS VEGAS
 DEPARTMENT OF COMMUNITY
 PLANNING & DEVELOPEMNT

 MATT PINJUV, PLANNER

MP/dr

MASTER SUBDIVISION ADDRESS: 4914 CRIMSON GLDRY LANE

SEE THE LIST FOR AMENDED MAP OF RANCHO ALTA MIRA LOT 11 - UNIT A
 (dated October 14, 1993)

RANCHO ALTA MIRA LOT 11

UNIT A

