

SUNHAMPTON CONDOMINIUMS

NOVEMBER 2, 1994

FIRE MAP #1918::47,57
200 SCALE MAP LOCATION: L-10-4
Recorded in BOOK 64 PAGE 62 on 10/26/94

GENERAL SITE ADDRESS:
3600 DALECREST DRIVE

<u>Block/Building & Lot/Unit No.</u> <u><<Legal Description>></u>	<u><<Mailing Address>></u>	<u><<Apt. Number/ POSTED ON BLDG.>></u>
BUILDING A	UNIT	
	A-1	3613 SHAWN REYNOLDS COURT NO. 101
	A-3	102
	A-5	103
	A-7	104
	A-2	201
	A-4	202
	A-6	203
	A-8	204
BUILDING B	UNIT	
	B-1	3612 SHAWN REYNOLDS COURT NO. 101
	B-3	102
	B-5	103
	B-7	104
	B-2	201
	B-4	202
	B-6	203
	B-8	204
BUILDING C	UNIT	
	C-1	7061 ROSCOE AVENUE NO. 101
	C-3	102
	C-5	103
	C-7	104
	C-2	201
	C-4	202
	C-6	203
	C-8	204
BUILDING D	UNIT	
	D-1	3661 RENOVAH STREET NO. 101
	D-3	102
	D-5	103
	D-7	104
	D-9	105
	D-2	201
	D-4	202
	D-6	203
	D-8	204
	D-10	205
BUILDING E	UNIT	
	E-1	3660 RENOVAH STREET NO. 105
	E-3	104
	E-5	103
	E-7	102
	E-9	101
	E-2	205
	E-4	204
	E-6	203
	E-8	202
	E-10	201
BUILDING F	UNIT	
	F-1	3677 RENOVAH STREET NO. 101
	F-3	102
	F-5	103
	F-7	104
	F-9	105

NOTE: THE INTERIOR DRIVE LANES
ARE PRIVATE ACCESS DRIVES

SUNHAMPTON CONDOMINIUMS

Block/Building & Lot/Unit No. <<Mailing Address>> <<Apt. Number/ POSTED ON BLDG.>>

Building	Unit	Address	Apt. No.
BUILDING K	K-1	ANGELA ROBIN STREET	106
	K-3		105
	K-5		104
	K-7		103
	K-9		102
	K-11		101
	K-2		206
	K-4		205
	K-6		204
	K-8		203
	K-10		202
	K-12		201
BUILDING I	I-1	IAN THOMAS STREET	101
	I-3		102
	I-5		103
	I-7		104
	I-9		105
	I-11		106
	I-2		201
	I-4		202
	I-6		203
	I-8		204
	I-10		205
	I-12		206

Building	Unit	Address	Apt. No.
BUILDING M	M-1	DOUG DEANER AVENUE	101
	M-3		102
	M-5		103
	M-7		104
	M-9		105
	M-2		201
	M-4		202
	M-6		203
	M-8		204
	M-10		205

Common Areas:	(Pool)	Address	Access
A		SUNHAMPTON AVENUE	E/W PRIVATE
B		RENOVAH STREET	N/S PRIVATE
C		" "	N/S PRIVATE
D		IAN THOMAS STREET	N/S PRIVATE
E		DOUG DEANER AVENUE	E/W PRIVATE
F		" "	E/W PRIVATE
G		SUNHAMPTON AVENUE	E/W PRIVATE
H		DATECREST DRIVE	N/S [PUBLIC]
I		IAN THOMAS STREET	N/S PRIVATE

NOTE: THE INTERIOR DRIVE LANES ARE PRIVATE ACCESS DRIVES

CITY OF LAS VEGAS
DEPARTMENT OF COMMUNITY
PLANNING & DEVELOPMENT
KYLE C. WALTON
SENIOR PLANNER

CURVE TABLE

CURVE	RADIUS	LENGTH	TANGENT	DATA
C1	288.00'	55.87'	28.29'	10°29'10"
C2	288.00'	37.37'	18.89'	10°29'10"
C3	78.00'	11.11'	5.77'	8°29'10"
C4	288.00'	26.51'	13.49'	8°29'10"
C5	178.00'	11.24'	5.62'	6°29'10"
C6	178.00'	64.72'	32.59'	13°04'22"
C7	20.00'	19.22'	10.51'	57°17'43"
C8	3.50'	11.01'	5.69'	110°00'00"
C9	3.50'	3.84'	2.00'	92°24'18"
C10	2.00'	3.27'	1.80'	84°03'29"
C11	29.00'	11.41'	5.81'	8°29'10"
C12	29.00'	11.24'	5.62'	8°29'10"
C13	24.00'	16.22'	8.54'	46°28'11"
C14	15.00'	26.09'	13.77'	39°29'22"
C15	15.00'	23.23'	12.43'	36°46'07"
C16	32.50'	22.24'	11.61'	31°16'04"
C17	25.00'	24.25'	12.68'	24°24'31"
C18	25.00'	14.65'	7.58'	17°28'49"
C19	183.00'	20.80'	10.60'	11°27'39"
C20	78.00'	12.41'	6.78'	10°29'10"
C21	78.00'	12.41'	6.78'	10°29'10"
C22	78.00'	12.41'	6.78'	10°29'10"
C23	15.00'	20.74'	10.41'	39°18'43"
C24	24.00'	13.20'	6.85'	37°48'08"
C25	105.00'	15.23'	7.63'	8°14'37"
C26	105.00'	15.23'	7.63'	8°14'37"
C27	105.00'	15.23'	7.63'	8°14'37"
C28	105.00'	15.23'	7.63'	8°14'37"
C29	105.00'	15.23'	7.63'	8°14'37"
C30	105.00'	15.23'	7.63'	8°14'37"
C31	105.00'	15.23'	7.63'	8°14'37"
C32	105.00'	15.23'	7.63'	8°14'37"
C33	105.00'	15.23'	7.63'	8°14'37"
C34	105.00'	15.23'	7.63'	8°14'37"
C35	105.00'	15.23'	7.63'	8°14'37"
C36	105.00'	15.23'	7.63'	8°14'37"
C37	105.00'	15.23'	7.63'	8°14'37"
C38	105.00'	15.23'	7.63'	8°14'37"
C39	105.00'	15.23'	7.63'	8°14'37"
C40	105.00'	15.23'	7.63'	8°14'37"
C41	105.00'	15.23'	7.63'	8°14'37"
C42	105.00'	15.23'	7.63'	8°14'37"
C43	105.00'	15.23'	7.63'	8°14'37"
C44	105.00'	15.23'	7.63'	8°14'37"
C45	105.00'	15.23'	7.63'	8°14'37"
C46	105.00'	15.23'	7.63'	8°14'37"
C47	105.00'	15.23'	7.63'	8°14'37"
C48	105.00'	15.23'	7.63'	8°14'37"
C49	105.00'	15.23'	7.63'	8°14'37"
C50	105.00'	15.23'	7.63'	8°14'37"

SUNHAMPTON CONDOMINIUMS

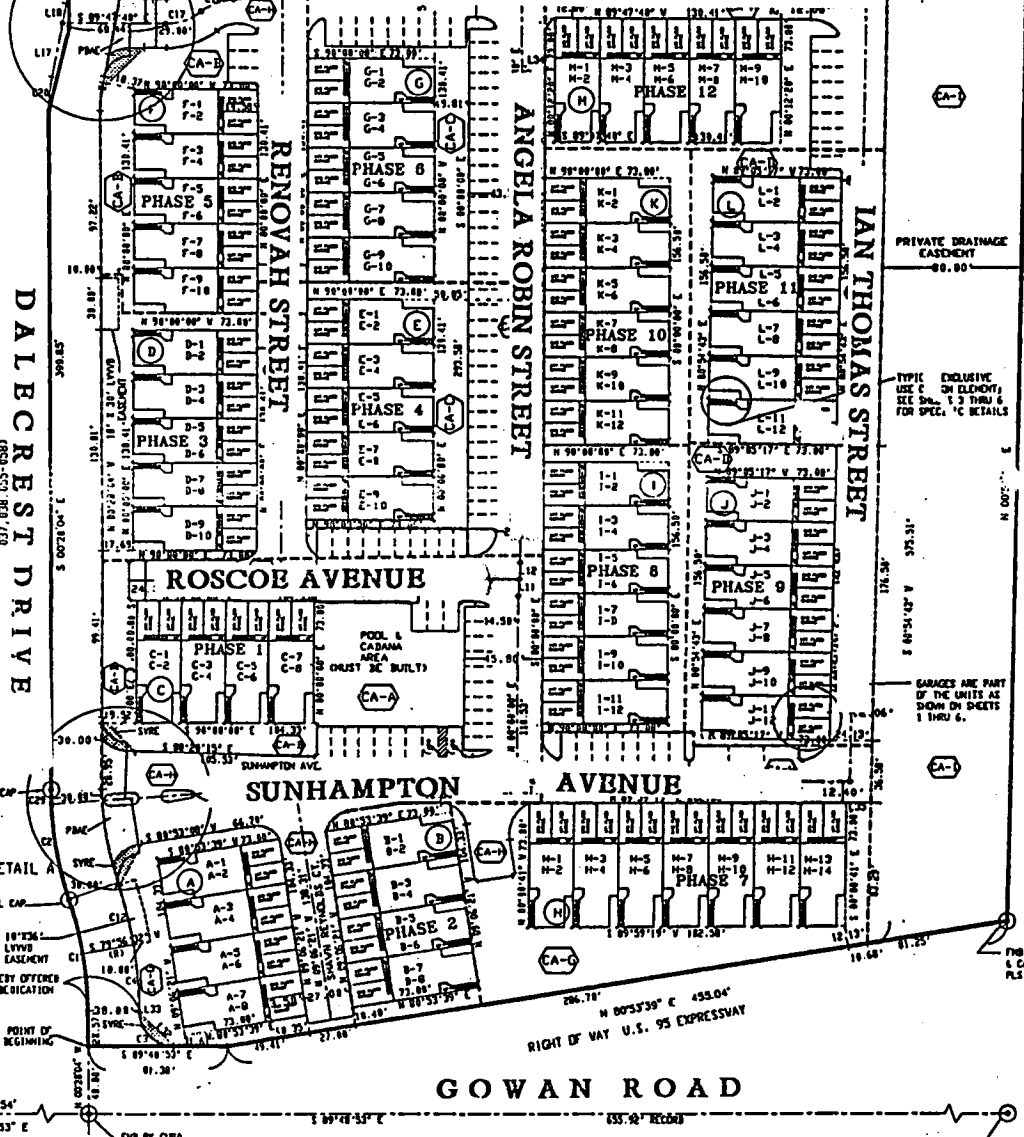
LINE TABLE

LINE	DIRECTION	DISTANCE
L1	N 89°47'48" W	12.00'
L2	N 89°47'48" W	12.00'
L3	N 89°47'48" W	12.00'
L4	N 89°47'48" W	12.00'
L5	N 89°47'48" W	12.00'
L6	N 89°47'48" W	12.00'
L7	N 89°47'48" W	12.00'
L8	N 89°47'48" W	12.00'
L9	N 89°47'48" W	12.00'
L10	N 89°47'48" W	12.00'
L11	N 89°47'48" W	12.00'
L12	N 89°47'48" W	12.00'
L13	N 89°47'48" W	12.00'
L14	N 89°47'48" W	12.00'
L15	N 89°47'48" W	12.00'
L16	N 89°47'48" W	12.00'
L17	N 89°47'48" W	12.00'
L18	N 89°47'48" W	12.00'
L19	N 89°47'48" W	12.00'
L20	N 89°47'48" W	12.00'
L21	N 89°47'48" W	12.00'
L22	N 89°47'48" W	12.00'
L23	N 89°47'48" W	12.00'
L24	N 89°47'48" W	12.00'
L25	N 89°47'48" W	12.00'
L26	N 89°47'48" W	12.00'
L27	N 89°47'48" W	12.00'
L28	N 89°47'48" W	12.00'
L29	N 89°47'48" W	12.00'
L30	N 89°47'48" W	12.00'
L31	N 89°47'48" W	12.00'
L32	N 89°47'48" W	12.00'
L33	N 89°47'48" W	12.00'
L34	N 89°47'48" W	12.00'
L35	N 89°47'48" W	12.00'
L36	N 89°47'48" W	12.00'
L37	N 89°47'48" W	12.00'
L38	N 89°47'48" W	12.00'
L39	N 89°47'48" W	12.00'
L40	N 89°47'48" W	12.00'
L41	N 89°47'48" W	12.00'
L42	N 89°47'48" W	12.00'
L43	N 89°47'48" W	12.00'
L44	N 89°47'48" W	12.00'
L45	N 89°47'48" W	12.00'
L46	N 89°47'48" W	12.00'
L47	N 89°47'48" W	12.00'
L48	N 89°47'48" W	12.00'
L49	N 89°47'48" W	12.00'
L50	N 89°47'48" W	12.00'

SEE DETAIL B

UNDEVELOPED APN 138-10-601-006

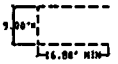
DOUG DEANER AVENUE



PARKING

COVERED PARKING (GARAGE) = 136 SPACES
 UNCOVERED PARKING = 92 SPACES
 HANDICAP PARKING = 2 SPACES
 TOTAL = 230 SPACES
 PARKING DENSITY = 1.71 SP/UNIT

TYPICAL PARKING SPACE



UP TO 30% OF SPACES MAY BE 9.00' WIDE W/DRIVE
 HANDICAP PARKING SPACES ARE 9.00' WIDE BY 18.00' LONG
 WITH 5.00' ACCESS BETWEEN THEM

LEGEND

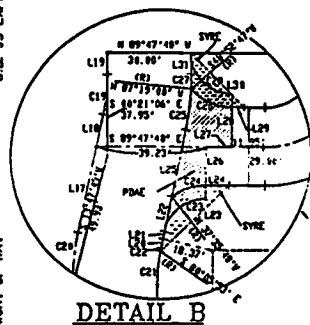
- (J) BUILDING DESIGNATION
- (CA-A) COMMON ELEMENT LOT #
- J-1 UNIT NUMBER (ODD NUMBER = 1ST FLOOR) (EVEN NUMBER = 2ND FLOOR)
- MONUMENT SET, PLS 10033 3/8" REBAR W/CAP
- MONUMENT FOUND AS NOTED
- SVRE SIGHT VISIBILITY RESTRICTION EASEMENT
- PMAC PRIVATE DRIVE ACCESS EASEMENT
- CI CURVE NUMBER
- L1 LINE NUMBER

NOTES:

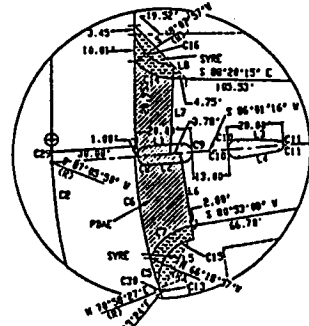
1. ALL ON SITE SEWERS TO BE PRIVATELY OWNED AND MAINTAINED.
2. ALL ON SITE STREETS ARE CONSIDERED PRIVATE ACCESS DRIVES.

TYPICAL BLDG

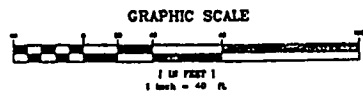
BLDG QTY	DESC.	SQ. FT. PER BLDG (INCL. GARAGES)
3	8 UNIT COMPLEX	11,200
5	18 UNIT COMPLEX	14,810
1	12 UNIT COMPLEX	16,012
1	14 UNIT COMPLEX	16,614
TOTAL NO. OF UNITS = 136		
DENSITY = 17.62 UNITS/AC		



DETAIL B



DETAIL A



BBCE

SUNHAMPTON CONDOMINIUMS

NOVEMBER 2, 1994

FIRE MAP #1918::47,57
 200 SCALE MAP LOCATION: T-10-4
 Recorded in BOOK 64 PAGE 62 on 10/26/94

GENERAL SITE ADDRESS:

3600 DATECREST DRIVE

Block/Building & Lot/Unit No. <<Mailing Address>> <<Apt. Number/POSTED ON BLDG.>>

NO.	SHAWN REYNOLDS COURT	3613	SHAWN REYNOLDS COURT	NO.	BUILDING A	UNIT	A-1	A-3	A-5	A-7	A-2	A-4	A-6	A-8
101				101										
102				102										
103				103										
104				104										
201				201										
202				202										
203				203										
204				204										
101				101										
102				102										
103				103										
104				104										
201				201										
202				202										
203				203										
204				204										
101				101										
102				102										
103				103										
104				104										
201				201										
202				202										
203				203										
204				204										
101				101										
102				102										
103				103										
104				104										
201				201										
202				202										
203				203										
204				204										
101				101										
102				102										
103				103										
104				104										
201				201										
202				202										
203				203										
204				204										
101				101										
102				102										
103				103										
104				104										
201				201										
202				202										
203				203										
204				204										
101				101										
102				102										
103				103										
104				104										
201				201										
202				202										
203				203										
204				204										
101				101										
102				102										
103				103										
104				104										
201				201										
202				202										
203				203										
204				204										
101				101										
102				102										
103				103										
104				104										
201				201										
202				202										
203				203										
204				204										
101				101										
102				102										
103				103										
104				104										
201				201										
202				202										
203				203										
204				204										
101				101										
102				102										
103				103										
104				104										
201				201										
202				202										
203				203										
204				204										
101				101										
102				102										
103				103										
104				104										
201				201										
202				202										
203				203										
204				204										
101				101										
102				102										
103				103										
104				104										
201				201										
202				202										
203				203										
204				204										
101				101										
102				102										
103				103										
104				104										
201				201										
202				202										
203				203										
204				204										
101				101										
102				102										
103				103										
104				104										
201				201										
202				202										
203				203										
204				204										
101				101										
102				102										
103				103										
104				104										
201				201										
202				202										
203				203										
204				204										
101				101										
102				102										
103				103										
104				104										

SUNHAMPTON CONDOMINIUMS

NOVEMBER 2, 1994

<u>Block/Building & Lot/Unit No.</u>	<u><<Mailing Address>></u>	<u><<Apt. Number/ POSTED ON BLDG.>></u>
<u><<Legal Description>></u>		
BUILDING F	UNIT F-2	3677 RENOVAH STREET NO. 201
	F-4	202
	F-6	203
	F-8	204
	F-10	205
BUILDING G	UNIT G-1	3676 RENOVAH STREET NO. 105
	G-3	104
	G-5	103
	G-7	102
	G-9	101
	G-2	205
	G-4	204
	G-6	203
	G-8	202
	G-10	201
BUILDING H	UNIT H-1	7041 SUNHAMPTON AVENUE NO. 101
	H-3	102
	H-5	103
	H-7	104
	H-9	105
	H-11	106
	H-13	107
	H-2	201
	H-4	202
	H-6	203
	H-8	204
	H-10	205
	H-12	206
	H-14	207
BUILDING I	UNIT I-1	3636 ANGELA ROBIN STREET NO. 106
	I-3	105
	I-5	104
	I-7	103
	I-9	102
	I-11	101
	I-2	206
	I-4	205
	I-6	204
	I-8	203
	I-10	202
	I-12	201
BUILDING J	UNIT J-1	3637 IAN THOMAS STREET NO. 101
	J-3	102
	J-5	103
	J-7	104
	J-9	105
	J-11	106
	J-2	201
	J-4	202
	J-6	203
	J-8	204
	J-10	205
	J-12	206

NOTE: THE INTERIOR DRIVE LANES
ARE PRIVATE ACCESS DRIVES

SUNHAMPTON CONDOMINIUMS

NOVEMBER 2, 1994

<u>Block/Building & Lot/Unit No.</u>	<u><<Mailing Address>></u>	<u><<Apt. Number/ POSTED ON BLDG.>></u>
<u><<Legal Description>></u>		
BUILDING K		
UNIT K-1	3672 ANGELA ROBIN STREET	NO. 106
K-3		105
K-5		104
K-7		103
K-9		102
K-11		101
K-2		206
K-4		205
K-6		204
K-8		203
K-10		202
K-12		201
BUILDING L		
UNIT L-1	3673 IAN THOMAS STREET	NO. 101
L-3		102
L-5		103
L-7		104
L-9		105
L-11		106
L-2		201
L-4		202
L-6		203
L-8		204
L-10		205
L-12		206
BUILDING M		
UNIT M-1	7041 DOUG DEANER AVENUE	NO. 101
M-3		102
M-5		103
M-7		104
M-9		105
M-2		201
M-4		202
M-6		203
M-8		204
M-10		205
COMMON AREAS:		
(POOL) A	7052 SUNHAMPTON AVENUE	E/W PRIVATE
B	3663 RENOVAH STREET	N/S PRIVATE
C	3662 " "	
D	3639 IAN THOMAS STREET	N/S PRIVATE
E	7040 DOUG DEANER AVENUE	E/W PRIVATE
F	7052 " " "	
G	7043 SUNHAMPTON AVENUE	E/W PRIVATE
H	3612 DALECREST DRIVE	N/S [PUBLIC]
I	3672 IAN THOMAS STREET	N/S PRIVATE

NOTE: THE INTERIOR DRIVE LANES
ARE PRIVATE ACCESS DRIVES

CITY OF LAS VEGAS
DEPARTMENT OF COMMUNITY
PLANNING & DEVELOPMENT

KCW
KYLE C. WALTON
SENIOR PLANNER

KCW/dr