

SCOTTSDALE POINTS CONDOMINIUMS PHASE 14

Recorded in Book 76 Page 40 of Plats

200 Scale Map Location: L-10-8

Fire Dept. District Map # 1918:88, 98

MASTER SITE ADDRESS: 3310 WINTERHAVEN ST

BLDG	34	UNIT	3411	3306	WINTERHAVEN ST	102	N/S	PUBLIC STREET
			3412			103		
			3413			101		
			3414			104		
			3421			202		
			3422			203		
			3423			201		
			3424			204		
BLDG	35	UNIT	3511	3300	WINTERHAVEN ST	102	N/S	PUBLIC STREET
			3512			103		
			3513			101		
			3514			104		
			3521			202		
			3522			203		
			3523			201		
			3524			204		
		GARAGE						
		UNIT	34	3308	WINTERHAVEN ST		N/S	PUBLIC STREET
			35	3304				
Common Area		B		3310	WINTERHAVEN ST		N/S	PUBLIC STREET

There are no addresses on U.S. 95 EXPRESSWAY

ORIGINAL DATE: 10/03/1996

CITY OF LAS VEGAS
PLANNING & DEVELOPMENT DEPARTMENT



KYLE C WALTON, SENIOR PLANNER

SCOTTSDALE POINTS CONDOMINIUMS PHASE 14

Recorded in Book 76 Page 40 of Plats

200 Scale Map Location: L-10-8

Fire Dept. District Map # 1918:88, 98

MASTER SITE ADDRESS: 3310 WINTERHAVEN ST

BLDG	34	UNIT	3411	3306	WINTERHAVEN ST	102	N/S	PUBLIC STREET
			3412			103		
			3413			101		
			3414			104		
			3421			202		
			3422			203		
			3423			201		
			3424			204		
BLDG	35	UNIT	3511	3300	WINTERHAVEN ST	102	N/S	PUBLIC STREET
			3512			103		
			3513			101		
			3514			104		
			3521			202		
			3522			203		
			3523			201		
			3524			204		
		GARAGE						
		UNIT	34	3308	WINTERHAVEN ST		N/S	PUBLIC STREET
			35	3304				
Common Area		B		3310	WINTERHAVEN ST		N/S	PUBLIC STREET

There are no addresses on U.S. 95 EXPRESSWAY

ORIGINAL DATE: 10/03/1996

CITY OF LAS VEGAS
PLANNING & DEVELOPMENT DEPARTMENT



KYLE C WALTON, SENIOR PLANNER

SCOTTSDALE POINTS CONDOMINIUMS PHASE 14

Recorded in Book 76 Page 40 of Plats

200 Scale Map Location: L-10-8

Fire Dept. District Map # 1918:88, 98

MASTER SITE ADDRESS: 3310 WINTERHAVEN ST

BLDG	34	UNIT	3411	3306	WINTERHAVEN ST	102	N/S	PUBLIC STREET
			3412			103		
			3413			101		
			3414			104		
			3421			202		
			3422			203		
			3423			201		
			3424			204		
BLDG	35	UNIT	3511	3300	WINTERHAVEN ST	102	N/S	PUBLIC STREET
			3512			103		
			3513			101		
			3514			104		
			3521			202		
			3522			203		
			3523			201		
			3524			204		
		GARAGE						
		UNIT	34	3308	WINTERHAVEN ST		N/S	PUBLIC STREET
			35	3304				
Common Area		B		3310	WINTERHAVEN ST		N/S	PUBLIC STREET

There are no addresses on U.S. 95 EXPRESSWAY

ORIGINAL DATE: 10/03/1996

CITY OF LAS VEGAS
PLANNING & DEVELOPMENT DEPARTMENT



KYLE C WALTON, SENIOR PLANNER

SCOTTSDALE POINTS CONDOMINIUMS

PHASE 14

A COMMON INTEREST COMMUNITY

BEING A PORTION OF LOT 4 OF FILE 52, PAGE 82 OF PARCEL MAPS - LYING WITHIN THE EAST HALF (E 1/2) OF THE SOUTHEAST QUARTER (SE 1/4) OF SECTION 10, TOWNSHIP 20, SOUTH, RANGE 60 EAST, M.D.M., CITY OF LAS VEGAS, CLARK COUNTY, NEVADA.

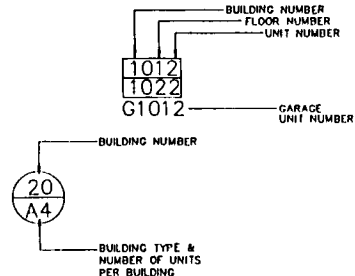
LEGEND

- SET TYPE III MONUMENT, PLS 9815
- MONUMENT FOUND AS INDICATED
- FOUND TYPE III MONUMENT, PLS 9815, PER PLAT OF SCOTTSDALE POINTS CONDOMINIUMS - PHASE 13, BOOK 13, PAGE 25
- Ⓐ GARAGE SPACES



PARKING DATA

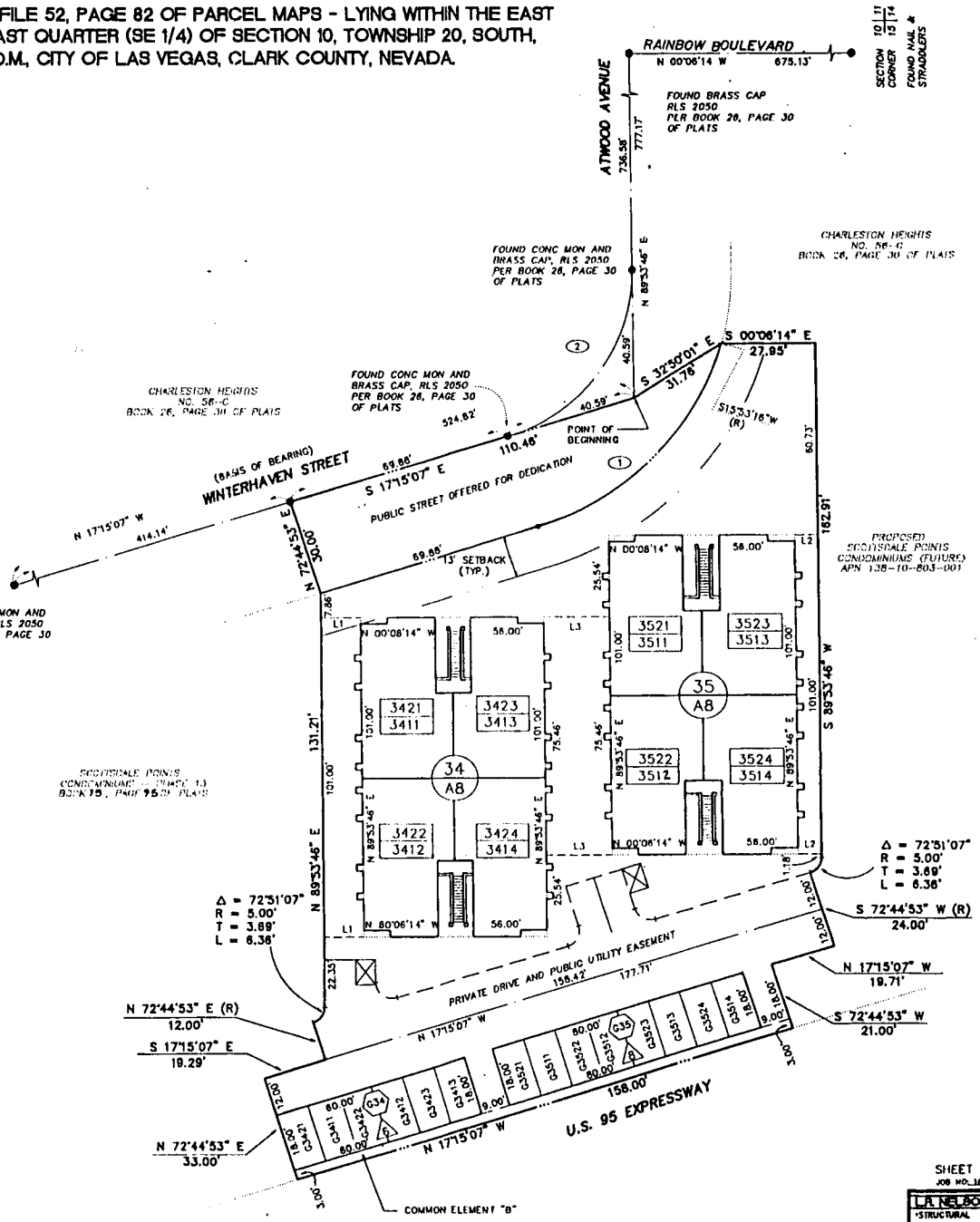
UNITS	16
TRASH ENCLOSURES	2
OPEN PARKING	5
GARAGE PARKING	14
RECREATIONAL VEHICLE PARKING	0
TOTAL PARKING	19



NOTES:
 BUILDING TIES ARE PERPENDICULAR TO BOUNDARY LINES.
 ALL ON-SITE SEWERS ARE PRIVATELY OWNED AND MAINTAINED.

CURVE	DELTA	RADIUS	LENGTH	TANGENT
1	56°51'37"	85.00'	84.35'	46.82'
2	72°51'07"	55.00'	69.93'	40.59'

LINE	BEARING	DISTANCE
L1	N 08°08'14" W	12.14'
L2	N 00°06'14" W	6.94'
L3	N 00°06'14" W	20.29'



Δ = 72°51'07"
 R = 5.00'
 T = 3.89"
 L = 6.38'

Δ = 72°51'07"
 R = 5.00'
 T = 3.89"
 L = 6.38'