

# DESERT SAGE

Recorded in Book 101 Page 71 of Plats

200 Scale Map Location: M-34-6

Fire Dept. District Map # 2425:68

MASTER SITE ADDRESS: 313 S. 9TH ST

BLOCK 1	LOT	1	910	SAGE TREE CT	E/W	PRIVATE STREET
		2	920			
		3	921			
		4	911			
		5	901			

CITY OF LAS VEGAS  
PLANNING & DEVELOPMENT DEPARTMENT



DAVID R BRATCHER, SR PLANNER

# DESERT SAGE

Recorded in Book 101 Page 71 of Plats

200 Scale Map Location: M-34-6

Fire Dept. District Map # 2425:68

MASTER SITE ADDRESS: 313 S. 9TH ST

BLOCK 1	LOT	1	910	SAGE TREE CT	EW	PRIVATE STREET
		2	920			
		3	921			
		4	911			
		5	901			

CITY OF LAS VEGAS  
PLANNING & DEVELOPMENT DEPARTMENT

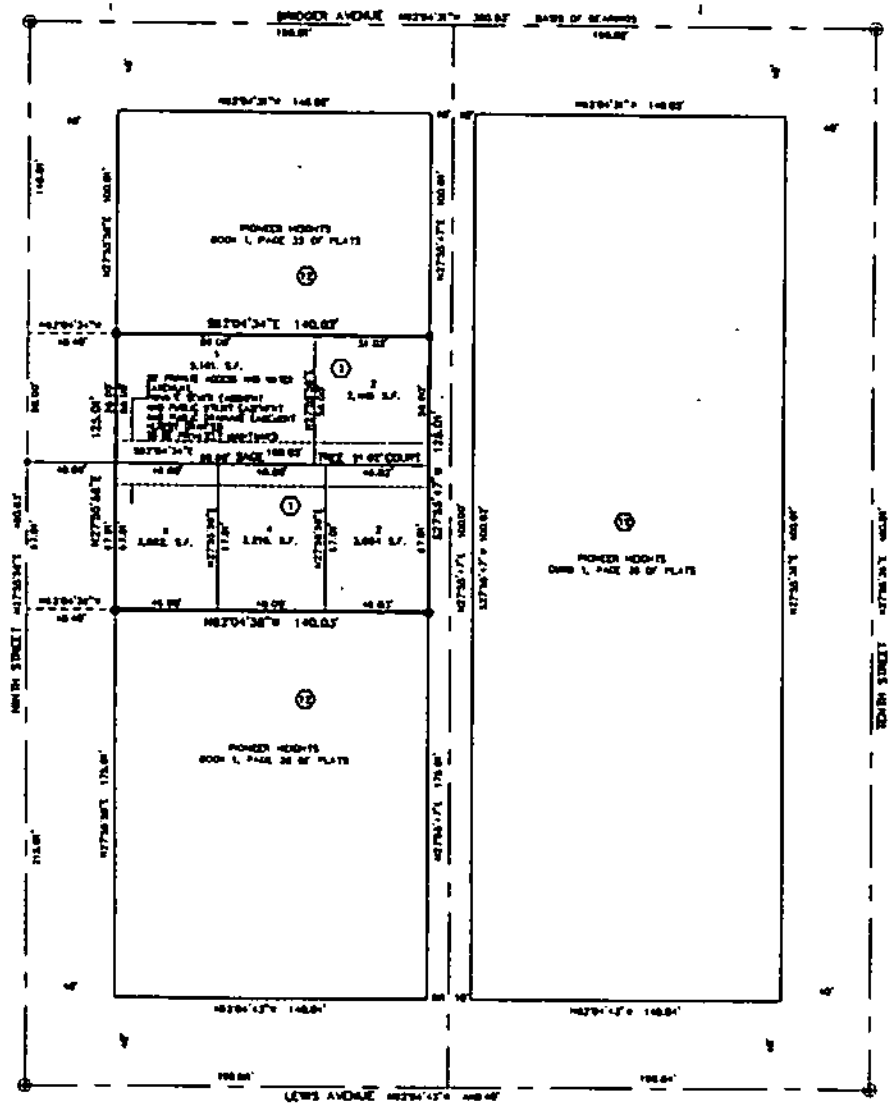


DAVID R BRATCHER, SR PLANNER

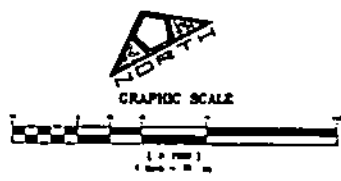
# DESERT SAGE

A MERGER AND RESUBDIVISION OF LOTS 5, 6, 7, 8, AND 9 OF BLOCK 12 IN BOOK 1 OF PLATS, PAGE 35,  
SITUATE WITHIN THE NORTHEAST QUARTER (NE 1/4) OF THE SOUTHEAST QUARTER (SE 1/4)  
OF SECTION 34, TOWNSHIP 20 SOUTH, RANGE 61 EAST, M.O.M.,  
CITY OF LAS VEGAS, CLARK COUNTY, NEVADA

FILE COPY



- LEGEND**
- SUBDIVISION BOUNDARY LINE
  - LOT LINE
  - RIGHT-OF-WAY LINE
  - STREET CENTERLINE
  - ADJACENT'S PARCEL LINE
  - EASEMENT LINE
  - FOUND 3 INCH CITY OF LAS VEGAS ALUMINUM CAP STAMPED "PLS 3004" PER FILE 87, PAGE 78 OF PLATS
  - FOUND NAIL AND BRASS TAC "PLS 4041", PER FILE 114, PAGE 20 OF SURVEYS
  - FOUND NAIL AND ALUMINUM CAP "PLS 4041", PER FILE 114, PAGE 20 OF SURVEYS
  - SET TYPE B MONUMENT "PLS 4041", 10 IN TYPE IN-A REFERENCE MONUMENTS IN TOP OF CURB
  - 1 LOT MARKER
  - 12 METAL LOTS IN SUBDIVISION - 1
  - 12 BLOCK MARKER



- NOTES:**
1. NEAR PROPERTY CORNERS SHALL BE SET WITH 4 INCH NAIL AND ALUMINUM CAP STAMPED "PLS 3004" PER FILE 87, PAGE 78 OF PLATS. BLOCK SHALL BE SET WITH 4 INCH NAIL AND BRASS TAC STAMPED "PLS 4041" PER FILE 114, PAGE 20 OF SURVEYS. SHALL BE DENOTE THE SIDE PROPERTY LINE. FRONT PROPERTY CORNERS SHALL BE INDICATED BY A BENCHMARK IN THE TOP OF CURB ON THE SIDE PROPERTY LINE, PROLONGED.
  2. EASEMENT FOR IMPASSAGE ACCESS AND WATER AND SEWER PURPOSES TO BE RECEIVED AND GRANTED PER SEARSON'S BUREAU CONVEYANCES OF THE LOTS, PARCELS, UNITS OR SITES CREATED BY THE RECORDATION OF THIS MAP.

BY CLARKE 2008 121  
JOB 0713 0020