

FREMONT STREET LOFT HOMES

Recorded in Book 136 Page 037 of Plats

MASTER SITE ADDRESS: 1980 FREMONT ST

Fire Department District Map Number:

02426-96

<u>Block</u>	<u>Lot</u>	<u>Address</u>	
1	1	1990 PIN OAK AVE	
	2	1994	
	3	1998	
	4	2002	
	5	2006	
	6	2010	
	7	2014	
	8	2018	
	9	226	DOUGRAM AVE
		230	
		234	
		238	
		242	
		246	
		250	
		254	
2	17	2019 LEWIS AVE	
	18	2015	
	19	2011	
	20	2007	
	21	2003	
	22	1999	
	23	1995	
	24	1991	
3	25	255 TOWER ST	
	26	251	
	27	247	
	28	243	
	29	239	
	30	235	

FREMONT STREET LOFT HOMES

Recorded in Book 136 Page 037 of Plats

MASTER SITE ADDRESS: 1980 FREMONT ST

Fire Department District Map Number:

02426-96

<u>Block</u>	<u>Lot</u>	<u>Address</u>
3	31	231 TOWER ST
	32	227
	33	223
	34	219
	35	215
	36	211
4	37	1970 PIN OAK AVE
	38	1974
	39	1978
	40	1982
5	41	1991
	42	1995
	43	1999
	44	2003
	45	2007
	46	223 DOUGRAM AVE
	47	227
	48	231
	49	235
	50	2006 YAUPON AVE
	51	2002
	52	1998
	53	240 TOWER ST
	54	236
	55	232
	56	228
6	57	239 DOUGRAM AVE
	58	243
	59	247
	60	251

FREMONT STREET LOFT HOMES

Recorded in Book 136 Page 037 of Plats

MASTER SITE ADDRESS: 1980 FREMONT ST

Fire Department District Map Number:

02426-96

<u>Block</u>	<u>Lot</u>	<u>Address</u>
6	61	2006 LEWIS AVE
	62	2002
	63	1998
	64	254 TOWER ST
	65	250
	66	246
	67	242
	68	1999 YAUPON AVE
	69	2003
	70	2007

Jonathan Boyles, Planner I

Jonathan Boyles 4/24/07

92-AL-11-92
 SUBDIVISION BOUNDARY
 LOT LINE
 STREET CENTERLINE
 EXISTING LOT (SEE MAP NOTED)

FREMONT STREET LOT HOME

COMMON INTEREST COMMUNITY

A PORTION OF THE SOUTHWEST QUARTER (SW 1/4) OF THE SOUTHWEST QUARTER (SW 1/4) OF SECTION 35, TOWNSHIP 20 SOUTH, RANGE 61 EAST, M.D.B. & M. CITY OF LAS VEGAS, CLARK COUNTY, NEVADA.

LINE NUMBER	LINE BEARING	LINE LENGTH	AREA
1	N 89° 59' 54" W	100.00	100.00
2	S 89° 59' 54" E	100.00	100.00
3	S 89° 59' 54" E	100.00	100.00
4	N 89° 59' 54" W	100.00	100.00
5	N 89° 59' 54" W	100.00	100.00
6	S 89° 59' 54" E	100.00	100.00
7	S 89° 59' 54" E	100.00	100.00
8	N 89° 59' 54" W	100.00	100.00
9	N 89° 59' 54" W	100.00	100.00
10	S 89° 59' 54" E	100.00	100.00
11	S 89° 59' 54" E	100.00	100.00
12	N 89° 59' 54" W	100.00	100.00
13	N 89° 59' 54" W	100.00	100.00
14	S 89° 59' 54" E	100.00	100.00
15	S 89° 59' 54" E	100.00	100.00
16	N 89° 59' 54" W	100.00	100.00
17	N 89° 59' 54" W	100.00	100.00
18	S 89° 59' 54" E	100.00	100.00
19	S 89° 59' 54" E	100.00	100.00
20	N 89° 59' 54" W	100.00	100.00
21	N 89° 59' 54" W	100.00	100.00
22	S 89° 59' 54" E	100.00	100.00
23	S 89° 59' 54" E	100.00	100.00
24	N 89° 59' 54" W	100.00	100.00
25	N 89° 59' 54" W	100.00	100.00
26	S 89° 59' 54" E	100.00	100.00
27	S 89° 59' 54" E	100.00	100.00
28	N 89° 59' 54" W	100.00	100.00
29	N 89° 59' 54" W	100.00	100.00
30	S 89° 59' 54" E	100.00	100.00
31	S 89° 59' 54" E	100.00	100.00
32	N 89° 59' 54" W	100.00	100.00
33	N 89° 59' 54" W	100.00	100.00
34	S 89° 59' 54" E	100.00	100.00
35	S 89° 59' 54" E	100.00	100.00
36	N 89° 59' 54" W	100.00	100.00
37	N 89° 59' 54" W	100.00	100.00
38	S 89° 59' 54" E	100.00	100.00
39	S 89° 59' 54" E	100.00	100.00
40	N 89° 59' 54" W	100.00	100.00
41	N 89° 59' 54" W	100.00	100.00
42	S 89° 59' 54" E	100.00	100.00
43	S 89° 59' 54" E	100.00	100.00
44	N 89° 59' 54" W	100.00	100.00
45	N 89° 59' 54" W	100.00	100.00
46	S 89° 59' 54" E	100.00	100.00
47	S 89° 59' 54" E	100.00	100.00
48	N 89° 59' 54" W	100.00	100.00
49	N 89° 59' 54" W	100.00	100.00
50	S 89° 59' 54" E	100.00	100.00
51	S 89° 59' 54" E	100.00	100.00
52	N 89° 59' 54" W	100.00	100.00
53	N 89° 59' 54" W	100.00	100.00
54	S 89° 59' 54" E	100.00	100.00
55	S 89° 59' 54" E	100.00	100.00
56	N 89° 59' 54" W	100.00	100.00
57	N 89° 59' 54" W	100.00	100.00
58	S 89° 59' 54" E	100.00	100.00
59	S 89° 59' 54" E	100.00	100.00
60	N 89° 59' 54" W	100.00	100.00
61	N 89° 59' 54" W	100.00	100.00
62	S 89° 59' 54" E	100.00	100.00
63	S 89° 59' 54" E	100.00	100.00
64	N 89° 59' 54" W	100.00	100.00
65	N 89° 59' 54" W	100.00	100.00
66	S 89° 59' 54" E	100.00	100.00
67	S 89° 59' 54" E	100.00	100.00
68	N 89° 59' 54" W	100.00	100.00
69	N 89° 59' 54" W	100.00	100.00
70	S 89° 59' 54" E	100.00	100.00
71	S 89° 59' 54" E	100.00	100.00
72	N 89° 59' 54" W	100.00	100.00
73	N 89° 59' 54" W	100.00	100.00
74	S 89° 59' 54" E	100.00	100.00
75	S 89° 59' 54" E	100.00	100.00
76	N 89° 59' 54" W	100.00	100.00
77	N 89° 59' 54" W	100.00	100.00
78	S 89° 59' 54" E	100.00	100.00
79	S 89° 59' 54" E	100.00	100.00
80	N 89° 59' 54" W	100.00	100.00
81	N 89° 59' 54" W	100.00	100.00
82	S 89° 59' 54" E	100.00	100.00
83	S 89° 59' 54" E	100.00	100.00
84	N 89° 59' 54" W	100.00	100.00
85	N 89° 59' 54" W	100.00	100.00
86	S 89° 59' 54" E	100.00	100.00
87	S 89° 59' 54" E	100.00	100.00
88	N 89° 59' 54" W	100.00	100.00
89	N 89° 59' 54" W	100.00	100.00
90	S 89° 59' 54" E	100.00	100.00
91	S 89° 59' 54" E	100.00	100.00
92	N 89° 59' 54" W	100.00	100.00
93	N 89° 59' 54" W	100.00	100.00
94	S 89° 59' 54" E	100.00	100.00
95	S 89° 59' 54" E	100.00	100.00
96	N 89° 59' 54" W	100.00	100.00
97	N 89° 59' 54" W	100.00	100.00
98	S 89° 59' 54" E	100.00	100.00
99	S 89° 59' 54" E	100.00	100.00
100	N 89° 59' 54" W	100.00	100.00

- MAP NOTICES:**
- COMMON LOT N. - REMAINS SITES P.L.C. LOT OF LAS VEGAS
 - LOCAL SITES DEVELOPMENT AND PUBLIC CONDUCE EXISTING
 - ASSOCIATION CONTAINS 2,424.88 SQ. FT. (SEE ASSOCIATION DOCUMENT 2024517-144)
 - PUBLIC UTILITY LOCATIONS NOT TO BE REMOVED
 - PUBLIC UTILITY LOCATIONS NOT TO BE REMOVED
 - ASSOCIATION CONTAINS 2,424.88 SQ. FT. (SEE ASSOCIATION DOCUMENT 2024517-144)
 - TYPE OF DEVELOPMENT (S/M TO BE S/M)
 - FOUND INDICATORS (AS NOTED)
 - ALIGNED OVER THE SITES (S/M TO BE S/M)
- MAP NOTES:**
- NOT A PART OF THIS SITE
 - BASES OF ELEVATION
 - HOME OWNER'S ASSOCIATION
 - BLOCK NUMBER
 - LOTS
 - C/E (COMMON ELEMENT LOTS)

NOTE:
 PROJECT ELEVATION ACCESS FROM EXISTING STREET TO DEVELOP LOT 1, 2, 3, 4, 5, 6, 7, 8, 9, 10, 11, 12, 13, 14, 15, 16, 17, 18, 19, 20, 21, 22, 23, 24, 25, 26, 27, 28, 29, 30, 31, 32, 33, 34, 35, 36, 37, 38, 39, 40, 41, 42, 43, 44, 45, 46, 47, 48, 49, 50, 51, 52, 53, 54, 55, 56, 57, 58, 59, 60, 61, 62, 63, 64, 65, 66, 67, 68, 69, 70, 71, 72, 73, 74, 75, 76, 77, 78, 79, 80, 81, 82, 83, 84, 85, 86, 87, 88, 89, 90, 91, 92, 93, 94, 95, 96, 97, 98, 99, 100.

NOTE:
 PUBLIC UTILITY EXISTING TO HOME OWNER'S ASSOCIATION

NOTE:
 PUBLIC UTILITY EXISTING TO HOME OWNER'S ASSOCIATION

NOTE:
 PUBLIC UTILITY EXISTING TO HOME OWNER'S ASSOCIATION

NOTE:
 PUBLIC UTILITY EXISTING TO HOME OWNER'S ASSOCIATION

NOTE:
 PUBLIC UTILITY EXISTING TO HOME OWNER'S ASSOCIATION

NOTE:
 PUBLIC UTILITY EXISTING TO HOME OWNER'S ASSOCIATION

BASIS OF BEARING:
 NORTH BY THE S. & M. OF SECTION 35, TOWNSHIP 20 SOUTH, RANGE 61 EAST, M.D.B. & M. CITY OF LAS VEGAS, CLARK COUNTY, NEVADA, IS CORNER OF NEVADA RECORDS.

NOTE:
 PUBLIC UTILITY EXISTING TO HOME OWNER'S ASSOCIATION

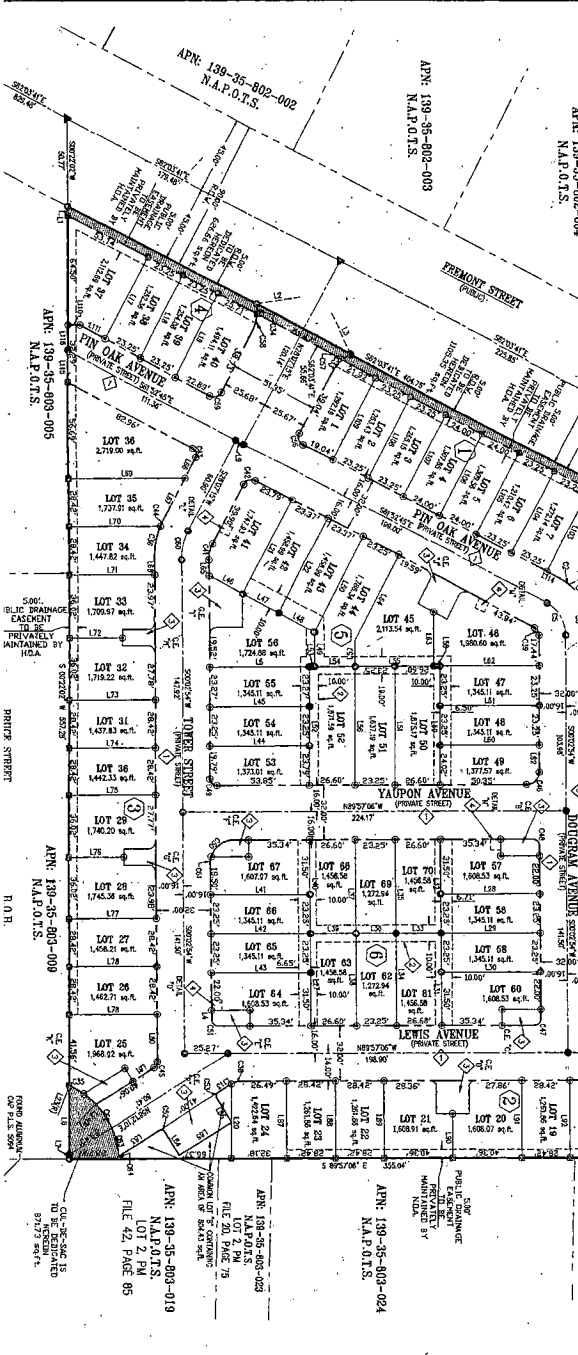
NOTE:
 PUBLIC UTILITY EXISTING TO HOME OWNER'S ASSOCIATION

NOTE:
 PUBLIC UTILITY EXISTING TO HOME OWNER'S ASSOCIATION

NOTE:
 PUBLIC UTILITY EXISTING TO HOME OWNER'S ASSOCIATION

NOTE:
 PUBLIC UTILITY EXISTING TO HOME OWNER'S ASSOCIATION

NOTE:
 PUBLIC UTILITY EXISTING TO HOME OWNER'S ASSOCIATION



APN 139-35-802-002
 N.A.P.O.T.S.

APN 139-35-802-003
 N.A.P.O.T.S.

APN 139-35-802-004
 N.A.P.O.T.S.

APN 139-35-802-005
 N.A.P.O.T.S.

APN 139-35-802-006
 N.A.P.O.T.S.

APN 139-35-802-007
 N.A.P.O.T.S.

APN 139-35-802-008
 N.A.P.O.T.S.

APN 139-35-802-009
 N.A.P.O.T.S.

APN 139-35-802-010
 N.A.P.O.T.S.

APN 139-35-802-011
 N.A.P.O.T.S.

APN 139-35-802-012
 N.A.P.O.T.S.

APN 139-35-802-013
 N.A.P.O.T.S.

APN 139-35-802-014
 N.A.P.O.T.S.

APN 139-35-802-015
 N.A.P.O.T.S.

APN 139-35-802-016
 N.A.P.O.T.S.

APN 139-35-802-017
 N.A.P.O.T.S.

APN 139-35-802-018
 N.A.P.O.T.S.

APN 139-35-802-019
 N.A.P.O.T.S.

APN 139-35-802-020
 N.A.P.O.T.S.

APN 139-35-802-021
 N.A.P.O.T.S.

APN 139-35-802-022
 N.A.P.O.T.S.

APN 139-35-802-023
 N.A.P.O.T.S.

APN 139-35-802-024
 N.A.P.O.T.S.

APN 139-35-802-025
 N.A.P.O.T.S.

APN 139-35-802-026
 N.A.P.O.T.S.

APN 139-35-802-027
 N.A.P.O.T.S.

APN 139-35-802-028
 N.A.P.O.T.S.

APN 139-35-802-029
 N.A.P.O.T.S.

APN 139-35-802-030
 N.A.P.O.T.S.

APN 139-35-802-031
 N.A.P.O.T.S.

APN 139-35-802-032
 N.A.P.O.T.S.

APN 139-35-802-033
 N.A.P.O.T.S.

APN 139-35-802-034
 N.A.P.O.T.S.

APN 139-35-802-035
 N.A.P.O.T.S.

APN 139-35-802-036
 N.A.P.O.T.S.

APN 139-35-802-037
 N.A.P.O.T.S.

APN 139-35-802-038
 N.A.P.O.T.S.

APN 139-35-802-039
 N.A.P.O.T.S.

APN 139-35-802-040
 N.A.P.O.T.S.

APN 139-35-802-041
 N.A.P.O.T.S.

APN 139-35-802-042
 N.A.P.O.T.S.

APN 139-35-802-043
 N.A.P.O.T.S.

APN 139-35-802-044
 N.A.P.O.T.S.

APN 139-35-802-045
 N.A.P.O.T.S.

APN 139-35-802-046
 N.A.P.O.T.S.

APN 139-35-802-047
 N.A.P.O.T.S.

APN 139-35-802-048
 N.A.P.O.T.S.

APN 139-35-802-049
 N.A.P.O.T.S.

APN 139-35-802-050
 N.A.P.O.T.S.

APN 139-35-802-051
 N.A.P.O.T.S.

APN 139-35-802-052
 N.A.P.O.T.S.

APN 139-35-802-053
 N.A.P.O.T.S.

APN 139-35-802-054
 N.A.P.O.T.S.

APN 139-35-802-055
 N.A.P.O.T.S.

APN 139-35-802-056
 N.A.P.O.T.S.

APN 139-35-802-057
 N.A.P.O.T.S.

APN 139-35-802-058
 N.A.P.O.T.S.

APN 139-35-802-059
 N.A.P.O.T.S.

APN 139-35-802-060
 N.A.P.O.T.S.

APN 139-35-802-061
 N.A.P.O.T.S.

APN 139-35-802-062
 N.A.P.O.T.S.

APN 139-35-802-063
 N.A.P.O.T.S.

APN 139-35-802-064
 N.A.P.O.T.S.

APN 139-35-802-065
 N.A.P.O.T.S.

APN 139-35-802-066
 N.A.P.O.T.S.

APN 139-35-802-067
 N.A.P.O.T.S.

APN 139-35-802-068
 N.A.P.O.T.S.

APN 139-35-802-069
 N.A.P.O.T.S.

APN 139-35-802-070
 N.A.P.O.T.S.

APN 139-35-802-071
 N.A.P.O.T.S.

APN 139-35-802-072
 N.A.P.O.T.S.

APN 139-35-802-073
 N.A.P.O.T.S.

APN 139-35-802-074
 N.A.P.O.T.S.

APN 139-35-802-075
 N.A.P.O.T.S.

APN 139-35-802-076
 N.A.P.O.T.S.

APN 139-35-802-077
 N.A.P.O.T.S.

APN 139-35-802-078
 N.A.P.O.T.S.

APN 139-35-802-079
 N.A.P.O.T.S.

APN 139-35-802-080
 N.A.P.O.T.S.

APN 139-35-802-081
 N.A.P.O.T.S.

APN 139-35-802-082
 N.A.P.O.T.S.

APN 139-35-802-083
 N.A.P.O.T.S.

APN 139-35-802-084
 N.A.P.O.T.S.

APN 139-35-802-085
 N.A.P.O.T.S.

APN 139-35-802-086
 N.A.P.O.T.S.

APN 139-35-802-087
 N.A.P.O.T.S.

APN 139-35-802-088
 N.A.P.O.T.S.

APN 139-35-802-089
 N.A.P.O.T.S.

APN 139-35-802-090
 N.A.P.O.T.S.

APN 139-35-802-091
 N.A.P.O.T.S.

APN 139-35-802-092
 N.A.P.O.T.S.

APN 139-35-802-093
 N.A.P.O.T.S.

APN 139-35-802-094
 N.A.P.O.T.S.

APN 139-35-802-095
 N.A.P.O.T.S.

APN 139-35-802-096
 N.A.P.O.T.S.

APN 139-35-802-097
 N.A.P.O.T.S.

APN 139-35-802-098
 N.A.P.O.T.S.

APN 139-35-802-099
 N.A.P.O.T.S.

APN 139-35-802-100
 N.A.P.O.T.S.

APN 139-35-802-002
 N.A.P.O.T.S.

APN 139-35-802-003
 N.A.P.O.T.S.

APN 139-35-802-004
 N.A.P.O.T.S.

APN 139-35-802-005
 N.A.P.O.T.S.

APN 139-35-802-006
 N.A.P.O.T.S.

APN 139-35-802-007
 N.A.P.O.T.S.

APN 139-35-802-008
 N.A.P.O.T.S.

APN 139-35-802-009
 N.A.P.O.T.S.

APN 139-35-802-010
 N.A.P.O.T.S.

APN 139-35-802-011
 N.A.P.O.T.S.

APN 139-35-802-012
 N.A.P.O.T.S.

APN 139-35-802-013
 N.A.P.O.T.S.

APN 139-35-802-014
 N.A.P.O.T.S.

APN 139-35-802-015
 N.A.P.O.T.S.

APN 139-35-802-016
 N.A.P.O.T.S.

APN 139-35-802-017
 N.A.P.O.T.S.

APN 139-35-802-018
 N.A.P.O.T.S.

APN 139-35-802-019
 N.A.P.O.T.S.

APN 139-35-802-020
 N.A.P.O.T.S.

APN 139-35-802-021
 N.A.P.O.T.S.

APN 139-35-802-022
 N.A.P.O.T.S.

APN 139-35-802-023
 N.A.P.O.T.S.

APN 139-35-802-024
 N.A.P.O.T.S.

APN 139-35-802-025
 N.A.P.O.T.S.

APN 139-35-802-026
 N.A.P.O.T.S.

APN 139-35-802-027
 N.A.P.O.T.S.

APN 139-35-802-028
 N.A.P.O.T.S.

APN 139-35-802-029
 N.A.P.O.T.S.

APN 139-35-802-030
 N.A.P.O.T.S.

APN 139-35-802-031
 N.A.P.O.T.S.

APN 139-35-802-032
 N.A.P.O.T.S.

APN 139-35-802-033
 N.A.P.O.T.S.

APN 139-35-802-034
 N.A.P.O.T.S.

APN 139-35-802-035
 N.A.P.O.T.S.

APN 139-35-802-036
 N.A.P.O.T.S.

APN 139-35-802-037
 N.A.P.O.T.S.

APN 139-35-802-038
 N.A.P.O.T.S.

APN 139-35-802-039
 N.A.P.O.T.S.

APN 139-35-802-040
 N.A.P.O.T.S.

APN 139-35-802-041
 N.A.P.O.T.S.

APN 139-35-802-042
 N.A.P.O.T.S.

APN 139-35-802-043
 N.A.P.O.T.S.

APN 139-35-802-044
 N.A.P.O.T.S.

APN 139-35-802-045
 N.A.P.O.T.S.

APN 139-35-802-046
 N.A.P.O.T.S.

APN 139-35-802-047
 N.A.P.O.T.S.

APN 139-35-802-048
 N.A.P.O.T.S.

APN 139-35-802-049
 N.A.P.O.T.S.

APN 139-35-802-050
 N.A.P.O.T.S.

APN 139-35-802-051
 N.A.P.O.T.S.

APN 139-35-802-052
 N.A.P.O.T.S.

APN 139-35-802-053
 N.A.P.O.T.S.

APN 139-35-802-054
 N.A.P.O.T.S.

APN 139-35-802-055
 N.A.P.O.T.S.

APN 139-35-802-056
 N.A.P.O.T.S.

APN 139-35-802-057
 N.A.P.O.T.S.

APN 139-35-802-058
 N.A.P.O.T.S.

APN 139-35-802-059
 N.A.P.O.T.S.