

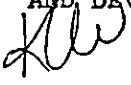
TWIN LAKES RANCH UNIT NO.2A

MAY 2, 1994

FIRE MAP 2223:86
200 MAP M-20-8

BLOCK A	Lot	57	1805 Wild Jan Drive	N/S	Public Street
		58	1813		
		59	1817		
		60	1821		
		61	1825		
		62	1901		
		63	1905		
		64	1909		
		65	1913		
		66	1917		
BLOCK A	Lot	67	2520 Ellingson Drive	E/W	Public Street
BLOCK C	Lot	98	2536 Rising Legend Way	E/W	Public Street
BLOCK C	Lot	153	1908 Wild Jan Drive	N/S	Public Street
		154	1904		
		155	1900		
		156	1824		
		157	1820		
		158	1816		
		159	1812		
		160	1808		
		161	1804		
		162	1800		

CITY OF LAS VEGAS
DEPARTMENT OF COMMUNITY PLANNING
AND DEVELOPMENT


KYLE C. WALTON, SENIOR PLANNER

KCW:lm

MASTER SUBDIVISION ADDRESS

1803 WILD JAN DRIVE

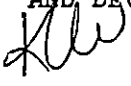
TWIN LAKES RANCH UNIT NO.2A

MAY 2, 1994

FIRE MAP 2223:86
200 MAP M-20-8

BLOCK A	Lot	57	1805 Wild Jan Drive	N/S	Public Street
		58	1813		
		59	1817		
		60	1821		
		61	1825		
		62	1901		
		63	1905		
		64	1909		
		65	1913		
		66	1917		
BLOCK A	Lot	67	2520 Ellingson Drive	E/W	Public Street
BLOCK C	Lot	98	2536 Rising Legend Way	E/W	Public Street
BLOCK C	Lot	153	1908 Wild Jan Drive	N/S	Public Street
		154	1904		
		155	1900		
		156	1824		
		157	1820		
		158	1816		
		159	1812		
		160	1808		
		161	1804		
		162	1800		

CITY OF LAS VEGAS
DEPARTMENT OF COMMUNITY PLANNING
AND DEVELOPMENT


KYLE C. WALTON, SENIOR PLANNER

KCW:lm

MASTER SUBDIVISION ADDRESS 1803 WILD JAN DRIVE


TWIN LAKES RANCH UNIT NO.2A

MAY 2, 1994

FIRE MAP 2223:86
200 MAP M-20-8

BLOCK A	Lot	57	1805 Wild Jan Drive	N/S	Public Street
		58	1813		
		59	1817		
		60	1821		
		61	1825		
		62	1901		
		63	1905		
		64	1909		
		65	1913		
		66	1917		
BLOCK A	Lot	67	2520 Ellingson Drive	E/W	Public Street
BLOCK C	Lot	98	2536 Rising Legend Way	E/W	Public Street
BLOCK C	Lot	153	1908 Wild Jan Drive	N/S	Public Street
		154	1904		
		155	1900		
		156	1824		
		157	1820		
		158	1816		
		159	1812		
		160	1808		
		161	1804		
		162	1800		

CITY OF LAS VEGAS
DEPARTMENT OF COMMUNITY PLANNING
AND DEVELOPMENT


KYLE C. WALTON, SENIOR PLANNER

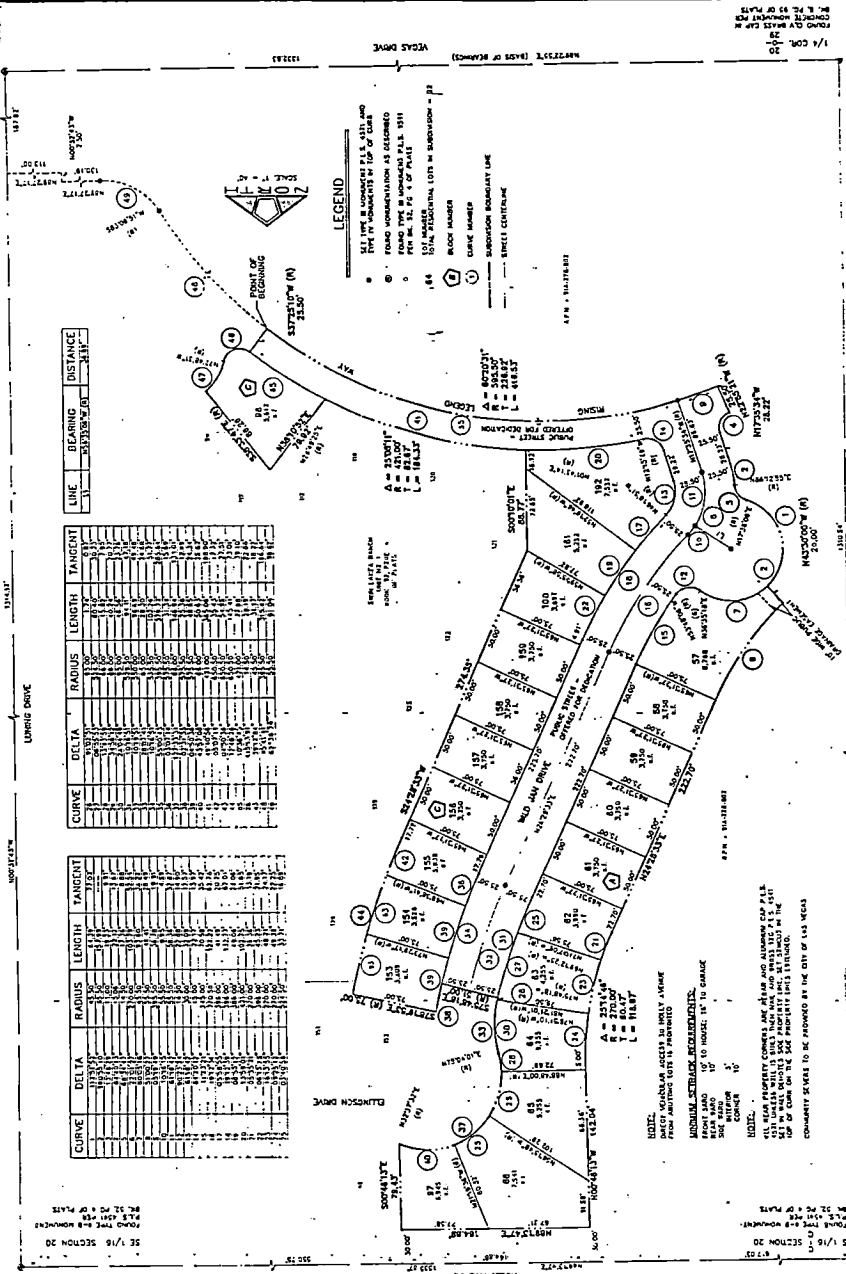
KCW:lm

MASTER SUBDIVISION ADDRESS

1803 WILD JAN DRIVE

TWIN LAKES RANCH UNIT NO. 2A

A PORTION OF THE SOUTHWEST QUARTER (SW 1/4) OF THE SOUTHEAST QUARTER (SE 1/4) OF SECTION 20, TOWNSHIP 20 SOUTH, RANGE 61 EAST, CITY OF LAS VEGAS, CLARK COUNTY, NEVADA.



LINE	BEARING	DISTANCE
1	S 89° 58' 00" W	111.12
2	S 89° 58' 00" W	111.12
3	S 89° 58' 00" W	111.12
4	S 89° 58' 00" W	111.12
5	S 89° 58' 00" W	111.12
6	S 89° 58' 00" W	111.12
7	S 89° 58' 00" W	111.12
8	S 89° 58' 00" W	111.12
9	S 89° 58' 00" W	111.12
10	S 89° 58' 00" W	111.12
11	S 89° 58' 00" W	111.12
12	S 89° 58' 00" W	111.12
13	S 89° 58' 00" W	111.12
14	S 89° 58' 00" W	111.12
15	S 89° 58' 00" W	111.12
16	S 89° 58' 00" W	111.12
17	S 89° 58' 00" W	111.12
18	S 89° 58' 00" W	111.12
19	S 89° 58' 00" W	111.12
20	S 89° 58' 00" W	111.12
21	S 89° 58' 00" W	111.12
22	S 89° 58' 00" W	111.12
23	S 89° 58' 00" W	111.12
24	S 89° 58' 00" W	111.12
25	S 89° 58' 00" W	111.12
26	S 89° 58' 00" W	111.12
27	S 89° 58' 00" W	111.12
28	S 89° 58' 00" W	111.12
29	S 89° 58' 00" W	111.12
30	S 89° 58' 00" W	111.12
31	S 89° 58' 00" W	111.12
32	S 89° 58' 00" W	111.12
33	S 89° 58' 00" W	111.12
34	S 89° 58' 00" W	111.12
35	S 89° 58' 00" W	111.12
36	S 89° 58' 00" W	111.12
37	S 89° 58' 00" W	111.12
38	S 89° 58' 00" W	111.12
39	S 89° 58' 00" W	111.12
40	S 89° 58' 00" W	111.12
41	S 89° 58' 00" W	111.12
42	S 89° 58' 00" W	111.12
43	S 89° 58' 00" W	111.12
44	S 89° 58' 00" W	111.12

CURVE	DELTA	RADIUS	LENGTH	TANGENT
1	111.12	111.12	111.12	111.12
2	111.12	111.12	111.12	111.12
3	111.12	111.12	111.12	111.12
4	111.12	111.12	111.12	111.12
5	111.12	111.12	111.12	111.12
6	111.12	111.12	111.12	111.12
7	111.12	111.12	111.12	111.12
8	111.12	111.12	111.12	111.12
9	111.12	111.12	111.12	111.12
10	111.12	111.12	111.12	111.12
11	111.12	111.12	111.12	111.12
12	111.12	111.12	111.12	111.12
13	111.12	111.12	111.12	111.12
14	111.12	111.12	111.12	111.12
15	111.12	111.12	111.12	111.12
16	111.12	111.12	111.12	111.12
17	111.12	111.12	111.12	111.12
18	111.12	111.12	111.12	111.12
19	111.12	111.12	111.12	111.12
20	111.12	111.12	111.12	111.12
21	111.12	111.12	111.12	111.12
22	111.12	111.12	111.12	111.12
23	111.12	111.12	111.12	111.12
24	111.12	111.12	111.12	111.12
25	111.12	111.12	111.12	111.12
26	111.12	111.12	111.12	111.12
27	111.12	111.12	111.12	111.12
28	111.12	111.12	111.12	111.12
29	111.12	111.12	111.12	111.12
30	111.12	111.12	111.12	111.12
31	111.12	111.12	111.12	111.12
32	111.12	111.12	111.12	111.12
33	111.12	111.12	111.12	111.12
34	111.12	111.12	111.12	111.12
35	111.12	111.12	111.12	111.12
36	111.12	111.12	111.12	111.12
37	111.12	111.12	111.12	111.12
38	111.12	111.12	111.12	111.12
39	111.12	111.12	111.12	111.12
40	111.12	111.12	111.12	111.12
41	111.12	111.12	111.12	111.12
42	111.12	111.12	111.12	111.12
43	111.12	111.12	111.12	111.12
44	111.12	111.12	111.12	111.12

CURVE	DELTA	RADIUS	LENGTH	TANGENT
1	111.12	111.12	111.12	111.12
2	111.12	111.12	111.12	111.12
3	111.12	111.12	111.12	111.12
4	111.12	111.12	111.12	111.12
5	111.12	111.12	111.12	111.12
6	111.12	111.12	111.12	111.12
7	111.12	111.12	111.12	111.12
8	111.12	111.12	111.12	111.12
9	111.12	111.12	111.12	111.12
10	111.12	111.12	111.12	111.12
11	111.12	111.12	111.12	111.12
12	111.12	111.12	111.12	111.12
13	111.12	111.12	111.12	111.12
14	111.12	111.12	111.12	111.12
15	111.12	111.12	111.12	111.12
16	111.12	111.12	111.12	111.12
17	111.12	111.12	111.12	111.12
18	111.12	111.12	111.12	111.12
19	111.12	111.12	111.12	111.12
20	111.12	111.12	111.12	111.12
21	111.12	111.12	111.12	111.12
22	111.12	111.12	111.12	111.12
23	111.12	111.12	111.12	111.12
24	111.12	111.12	111.12	111.12
25	111.12	111.12	111.12	111.12
26	111.12	111.12	111.12	111.12
27	111.12	111.12	111.12	111.12
28	111.12	111.12	111.12	111.12
29	111.12	111.12	111.12	111.12
30	111.12	111.12	111.12	111.12
31	111.12	111.12	111.12	111.12
32	111.12	111.12	111.12	111.12
33	111.12	111.12	111.12	111.12
34	111.12	111.12	111.12	111.12
35	111.12	111.12	111.12	111.12
36	111.12	111.12	111.12	111.12
37	111.12	111.12	111.12	111.12
38	111.12	111.12	111.12	111.12
39	111.12	111.12	111.12	111.12
40	111.12	111.12	111.12	111.12
41	111.12	111.12	111.12	111.12
42	111.12	111.12	111.12	111.12
43	111.12	111.12	111.12	111.12
44	111.12	111.12	111.12	111.12

5 1/16 SECTION 20
 RANGE 61 EAST
 TOWNSHIP 20 SOUTH
 CLARK COUNTY, NEVADA

5 1/16 SECTION 20
 RANGE 61 EAST
 TOWNSHIP 20 SOUTH
 CLARK COUNTY, NEVADA

NOTE:
 DIRECT VEHICULAR ACCESS TO HOLTS AVENUE FROM ADJACENT LOTS IS PROHIBITED.
ADJACENT STRIPBACK AGREEMENT:
 FROM 1000' TO 100' TO HOUSE 15' TO GARAGE 15' TO DRIVE 15' TO CONCRETE CURB 15' TO CENTER 15'

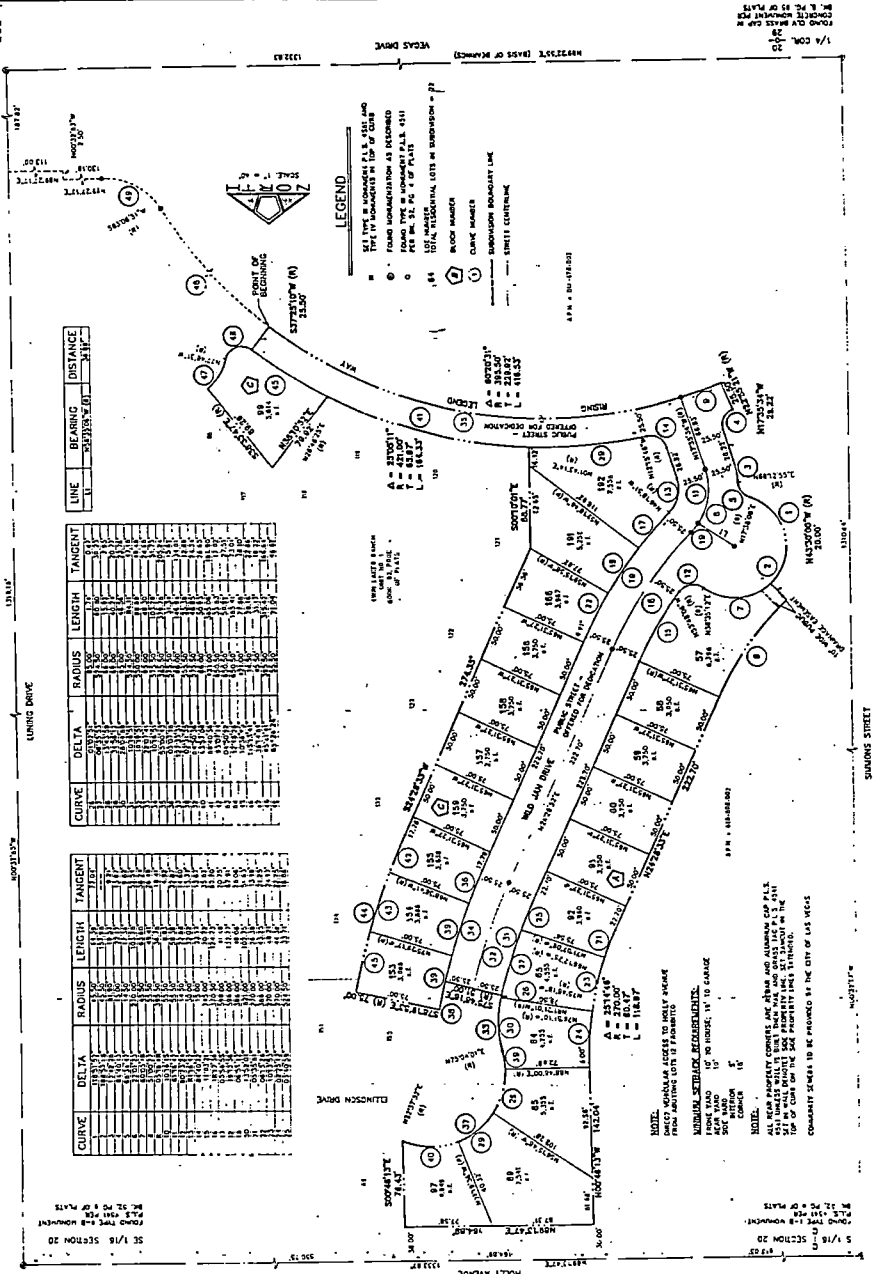
NOTE:
 DIRECT VEHICULAR ACCESS TO HOLTS AVENUE FROM ADJACENT LOTS IS PROHIBITED.
 ALL LOTS WILL BE SUBDIVIDED INTO 1/4 ACRES. THE CITY OF LAS VEGAS WILL BE ADVISOR BY THE CITY OF LAS VEGAS.

- LEGEND**
- 1 SET TYPE IN WORKBOOK P.L.S. 0311 AND TYPE IN WORKBOOK AT TOP OF CURB
 - 2 FOUND WORKBOOKS AS DESCRIBED
 - 3 FOUND TYPE IN WORKBOOK P.L.S. 0311
 - 4 FOUND TYPE IN WORKBOOK P.L.S. 0311
 - 5 1/4 ACRES
 - 6 1/4 ACRES
 - 7 1/4 ACRES
 - 8 1/4 ACRES
 - 9 1/4 ACRES
 - 10 1/4 ACRES
 - 11 1/4 ACRES
 - 12 1/4 ACRES
 - 13 1/4 ACRES
 - 14 1/4 ACRES
 - 15 1/4 ACRES
 - 16 1/4 ACRES
 - 17 1/4 ACRES
 - 18 1/4 ACRES
 - 19 1/4 ACRES
 - 20 1/4 ACRES
 - 21 1/4 ACRES
 - 22 1/4 ACRES
 - 23 1/4 ACRES
 - 24 1/4 ACRES
 - 25 1/4 ACRES
 - 26 1/4 ACRES
 - 27 1/4 ACRES
 - 28 1/4 ACRES
 - 29 1/4 ACRES
 - 30 1/4 ACRES
 - 31 1/4 ACRES
 - 32 1/4 ACRES
 - 33 1/4 ACRES
 - 34 1/4 ACRES
 - 35 1/4 ACRES
 - 36 1/4 ACRES
 - 37 1/4 ACRES
 - 38 1/4 ACRES
 - 39 1/4 ACRES
 - 40 1/4 ACRES
 - 41 1/4 ACRES
 - 42 1/4 ACRES
 - 43 1/4 ACRES
 - 44 1/4 ACRES

1/4 COR. 10
 FOUND 0.0000000000
 CONCRETE WORKBOOK P.L.S.
 RANGE 61 EAST
 TOWNSHIP 20 SOUTH
 CLARK COUNTY, NEVADA

TWIN LAKES RANCH UNIT NO. 2A

A PORTION OF THE SOUTHWEST QUARTER (SW 1/4) OF THE SOUTHEAST QUARTER (SE 1/4) OF SECTION 20, TOWNSHIP 20 SOUTH, RANGE 61 EAST, CITY OF LAS VEGAS, CLARK COUNTY, NEVADA.



CURVE	DELTA	RADIUS	LENGTH	TANGENT
1	11.31	100.00	19.63	19.63
2	11.31	100.00	19.63	19.63
3	11.31	100.00	19.63	19.63
4	11.31	100.00	19.63	19.63
5	11.31	100.00	19.63	19.63
6	11.31	100.00	19.63	19.63
7	11.31	100.00	19.63	19.63
8	11.31	100.00	19.63	19.63
9	11.31	100.00	19.63	19.63
10	11.31	100.00	19.63	19.63
11	11.31	100.00	19.63	19.63
12	11.31	100.00	19.63	19.63
13	11.31	100.00	19.63	19.63
14	11.31	100.00	19.63	19.63
15	11.31	100.00	19.63	19.63
16	11.31	100.00	19.63	19.63
17	11.31	100.00	19.63	19.63
18	11.31	100.00	19.63	19.63
19	11.31	100.00	19.63	19.63
20	11.31	100.00	19.63	19.63
21	11.31	100.00	19.63	19.63
22	11.31	100.00	19.63	19.63
23	11.31	100.00	19.63	19.63
24	11.31	100.00	19.63	19.63
25	11.31	100.00	19.63	19.63
26	11.31	100.00	19.63	19.63
27	11.31	100.00	19.63	19.63
28	11.31	100.00	19.63	19.63
29	11.31	100.00	19.63	19.63
30	11.31	100.00	19.63	19.63
31	11.31	100.00	19.63	19.63
32	11.31	100.00	19.63	19.63
33	11.31	100.00	19.63	19.63
34	11.31	100.00	19.63	19.63
35	11.31	100.00	19.63	19.63
36	11.31	100.00	19.63	19.63
37	11.31	100.00	19.63	19.63
38	11.31	100.00	19.63	19.63
39	11.31	100.00	19.63	19.63
40	11.31	100.00	19.63	19.63
41	11.31	100.00	19.63	19.63
42	11.31	100.00	19.63	19.63
43	11.31	100.00	19.63	19.63
44	11.31	100.00	19.63	19.63

CURVE	DELTA	RADIUS	LENGTH	TANGENT
1	11.31	100.00	19.63	19.63
2	11.31	100.00	19.63	19.63
3	11.31	100.00	19.63	19.63
4	11.31	100.00	19.63	19.63
5	11.31	100.00	19.63	19.63
6	11.31	100.00	19.63	19.63
7	11.31	100.00	19.63	19.63
8	11.31	100.00	19.63	19.63
9	11.31	100.00	19.63	19.63
10	11.31	100.00	19.63	19.63
11	11.31	100.00	19.63	19.63
12	11.31	100.00	19.63	19.63
13	11.31	100.00	19.63	19.63
14	11.31	100.00	19.63	19.63
15	11.31	100.00	19.63	19.63
16	11.31	100.00	19.63	19.63
17	11.31	100.00	19.63	19.63
18	11.31	100.00	19.63	19.63
19	11.31	100.00	19.63	19.63
20	11.31	100.00	19.63	19.63
21	11.31	100.00	19.63	19.63
22	11.31	100.00	19.63	19.63
23	11.31	100.00	19.63	19.63
24	11.31	100.00	19.63	19.63
25	11.31	100.00	19.63	19.63
26	11.31	100.00	19.63	19.63
27	11.31	100.00	19.63	19.63
28	11.31	100.00	19.63	19.63
29	11.31	100.00	19.63	19.63
30	11.31	100.00	19.63	19.63
31	11.31	100.00	19.63	19.63
32	11.31	100.00	19.63	19.63
33	11.31	100.00	19.63	19.63
34	11.31	100.00	19.63	19.63
35	11.31	100.00	19.63	19.63
36	11.31	100.00	19.63	19.63
37	11.31	100.00	19.63	19.63
38	11.31	100.00	19.63	19.63
39	11.31	100.00	19.63	19.63
40	11.31	100.00	19.63	19.63
41	11.31	100.00	19.63	19.63
42	11.31	100.00	19.63	19.63
43	11.31	100.00	19.63	19.63
44	11.31	100.00	19.63	19.63

SE 1/16 SECTION 20
 RANGE 61E R 18W
 TOWNSHIP 20S
 CLARK COUNTY NEVADA
 PLAT NO. 8 OF PLATS

NOTE: ALL UTILITIES SHALL BE DELETED AND ALL UTILITIES SHALL BE RELOCATED TO THE CENTERLINE OF THE DRIVE.
 MINIMUM SETBACK REGULATIONS:
 FRONT YARD 10' TO HOUSE, 15' TO GARAGE
 SIDE YARD 5' TO HOUSE, 10' TO GARAGE
 REAR YARD 5' TO HOUSE, 10' TO GARAGE
 CORNER 15'

NOTE:
 ALL UTILITIES SHALL BE DELETED AND ALL UTILITIES SHALL BE RELOCATED TO THE CENTERLINE OF THE DRIVE.
 MINIMUM SETBACK REGULATIONS:
 FRONT YARD 10' TO HOUSE, 15' TO GARAGE
 SIDE YARD 5' TO HOUSE, 10' TO GARAGE
 REAR YARD 5' TO HOUSE, 10' TO GARAGE
 CORNER 15'

COMMENT: SETBACKS TO BE PROVIDED BY THE CITY OF LAS VEGAS