

TWIN LAKES RANCH UNIT III

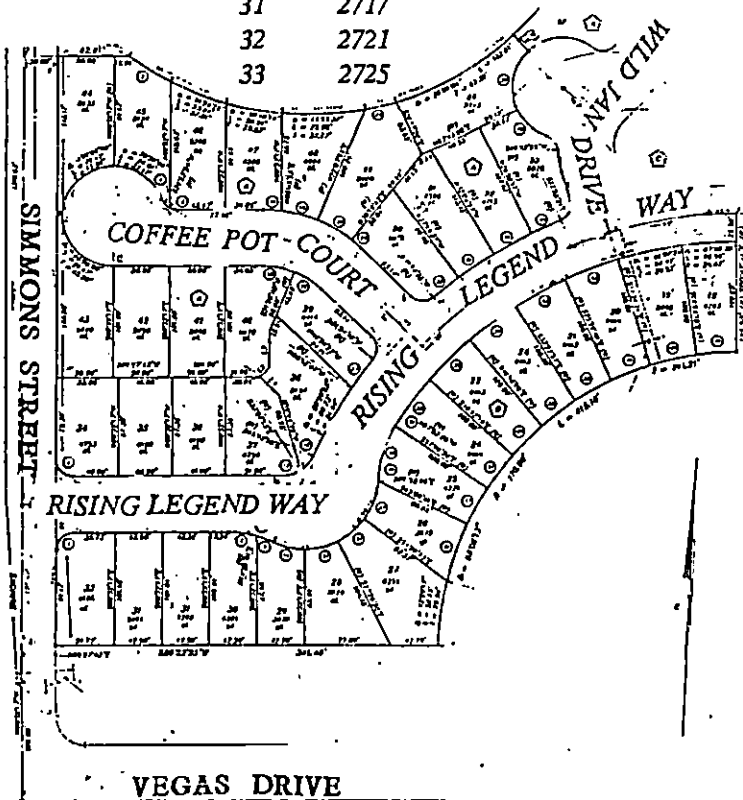
Recorded in Book 63 Page 70 of Plats, 8/30/94

Fire Dept. District Map #2223::85,86

200 Scale Location Map: M-20-8

MASTER SUBDIVISION ADDRESS: 1802 SIMMONS STREET

BLOCK A	LOT	34	2724	RISING LEGEND WAY	E/W	PUBLIC STREET
		35	2720			
		36	2716			
		37	2712			
		38	2632			
		39	2628			
BLOCK A	LOT	40	2709	COFFEE POT COURT	E/W	PUBLIC STREET
		41	2713			
		42	2717			
		43	2721			
		44	2720			
		45	2716			
		46	2712			
		47	2708			
		48	2704			
		49	2700			
BLOCK A	LOT	50	2620	RISING LEGEND WAY	E/W	PUBLIC STREET
		51	2616			
		52	2612			
		53	2608			
BLOCK A	LOT	54	1801	WILD JAN DRIVE	N/S	PUBLIC STREET
BLOCK D	LOT	18	2601	RISING LEGEND WAY	E/W	PUBLIC STREET
		19	2605			
		20	2609			
		21	2613			
		22	2617			
		23	2625			
		24	2629			
		25	2633			
		26	2637			
		27	2701			
		28	2705			
		29	2709			
		30	2713			
		31	2717			
		32	2721			
		33	2725			



CITY OF LAS VEGAS
DEPARTMENT OF COMMUNITY
PLANNING & DEVELOPMENT

KCW
KYLE C. WALTON
SENIOR PLANNER

KCW/dr
SEPTEMBER 1, 1994

TWIN LAKES RANCH UNIT III

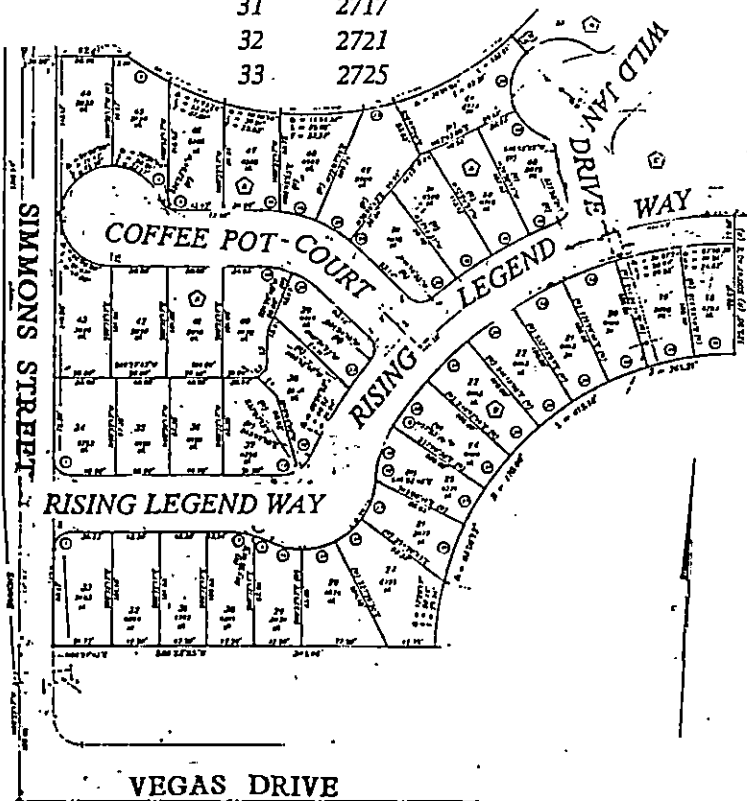
Recorded in Book 63 Page 70 of Plats, 8/30/94

Fire Dept. District Map #2223::85,86

200 Scale Location Map: M-20-8

MASTER SUBDIVISION ADDRESS: 1802 SIMMONS STREET

BLOCK A	LOT	34	2724	RISING LEGEND WAY	E/W	PUBLIC STREET
		35	2720			
		36	2716			
		37	2712			
		38	2632			
		39	2628			
BLOCK A	LOT	40	2709	COFFEE POT COURT	E/W	PUBLIC STREET
		41	2713			
		42	2717			
		43	2721			
		44	2720			
		45	2716			
		46	2712			
		47	2708			
		48	2704			
		49	2700			
BLOCK A	LOT	50	2620	RISING LEGEND WAY	E/W	PUBLIC STREET
		51	2616			
		52	2612			
		53	2608			
BLOCK A	LOT	54	1801	WILD JAN DRIVE	N/S	PUBLIC STREET
BLOCK D	LOT	18	2601	RISING LEGEND WAY	E/W	PUBLIC STREET
		19	2605			
		20	2609			
		21	2613			
		22	2617			
		23	2625			
		24	2629			
		25	2633			
		26	2637			
		27	2701			
		28	2705			
		29	2709			
		30	2713			
		31	2717			
		32	2721			
		33	2725			



CITY OF LAS VEGAS
DEPARTMENT OF COMMUNITY
PLANNING & DEVELOPMENT

KCW
KYLE C. WALTON
SENIOR PLANNER

KCW/dr
SEPTEMBER 1, 1994