

SEPTEMBER 24, 1993

BONITA CANYON UNIT 1

FIRE MAP #2217::92,93  
200 MAP:L-21-7

---

BLOCK 1	LOT	1	1636	ROYAL CANYON DRIVE	N/S	PUBLIC STREET
		2	1632			
		3	1628			
		4	1624			
		5	1620			
		6	1616			
		7	1612			
		8	1608			
		9	1604			
		10	1600			
		11	1601			
		12	1605			
		13	1609			
		14	1613			
		15	1617			
		16	1621			
		17	1625			
BLOCK 1	LOT	18	1624	DESERT CANYON COURT	N/S	PUBLIC STREET
		19	1620			
		20	1616			
		21	1612			
		22	1608			
		23	1604			
		24	1600			
		25	1601			
		26	1605			
		27	1609			
		28	1613			
BLOCK 1	LOT	29	8229	PEACEFUL CANYON DRIVE	E/W	PUBLIC STREET
		30	8233			
		31	8237			
		32	8241			
		33	8245			
		34	8249			
		35	8253			
BLOCK 1	LOT	36	1612	SAND CANYON DRIVE	N/S	PUBLIC STREET
		37	1608			
		38	1604			
		39	1600			
BLOCK 1	LOT	40	8301	SKY CANYON COURT	E/W	PUBLIC STREET
BLOCK 1	LOT	61	1629	SAND CANYON DRIVE	N/S	PUBLIC STREET
		62	1633			
		63	1637			
		64	1641			
		65	1645			
BLOCK 2	LOT	98	8256	PEACEFUL CANYON DRIVE	E/W	PUBLIC STREET
		99	8252			
		100	8248			
		101	8244			
		102	8240			
		103	8236			
		104	8232			
		105	8228			
		106	8224			
		107	8220			

BONITA CANYON UNIT 1  
 SEPTEMBER 24, 1993

FIRE MAP #2217::92,93  
 200 MAP: L-21-7

BLOCK 2	LOT	108	8216	PEACEFUL CANYON DRIVE	E/W	PUBLIC STREET
		109	8212			
		110	8208			
		111	8204			
		112	8200			

BLOCK 3	LOT	140	1656	ROYAL CANYON DRIVE	N/S	PUBLIC STREET
		141	1652			
		142	1648			
		143	1644			

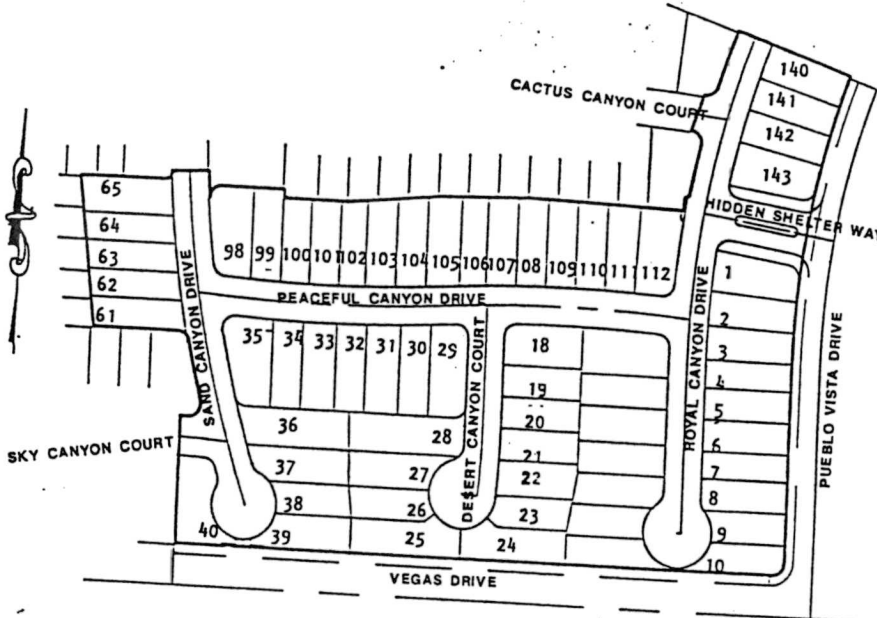
COMMON  
 ELEMENTS: LOT      A      1640      ROYAL CANYON DRIVE      N/S      PUBLIC STREET  
                           B      1642  
                           C      1638  
                           D      1641

STREETS WITH NO ADDRESSES:      CACTUS CANYON COURT      E/W      PUBLIC STREET  
   HIDDEN SHELTER WAY      E/W      PUBLIC STREET  
   VEGAS DRIVE      E/W      PUBLIC STREET

CITY OF LAS VEGAS  
 DEPARTMENT OF COMMUNITY  
 PLANNING & DEVELOPMENT

*JH*  
 JOHN B. HERBERT, PLANNING ASSISTANT  
 JBH/dr

MASTER SUBDIVISION ADDRESS: 1623 PUEBLO VISTA DRIVE



SEPTEMBER 24, 1993

BONITA CANYON UNIT 1

FIRE MAP #2217::92,93  
200 MAP:L-21-7

---

BLOCK 1	LOT	1	1636	ROYAL CANYON DRIVE	N/S	PUBLIC STREET
		2	1632			
		3	1628			
		4	1624			
		5	1620			
		6	1616			
		7	1612			
		8	1608			
		9	1604			
		10	1600			
		11	1601			
		12	1605			
		13	1609			
		14	1613			
		15	1617			
		16	1621			
		17	1625			
BLOCK 1	LOT	18	1624	DESERT CANYON COURT	N/S	PUBLIC STREET
		19	1620			
		20	1616			
		21	1612			
		22	1608			
		23	1604			
		24	1600			
		25	1601			
		26	1605			
		27	1609			
		28	1613			
BLOCK 1	LOT	29	8229	PEACEFUL CANYON DRIVE	E/W	PUBLIC STREET
		30	8233			
		31	8237			
		32	8241			
		33	8245			
		34	8249			
		35	8253			
BLOCK 1	LOT	36	1612	SAND CANYON DRIVE	N/S	PUBLIC STREET
		37	1608			
		38	1604			
		39	1600			
BLOCK 1	LOT	40	8301	SKY CANYON COURT	E/W	PUBLIC STREET
BLOCK 1	LOT	61	1629	SAND CANYON DRIVE	N/S	PUBLIC STREET
		62	1633			
		63	1637			
		64	1641			
		65	1645			
BLOCK 2	LOT	98	8256	PEACEFUL CANYON DRIVE	E/W	PUBLIC STREET
		99	8252			
		100	8248			
		101	8244			
		102	8240			
		103	8236			
		104	8232			
		105	8228			
		106	8224			
		107	8220			

BONITA CANYON UNIT 1  
 SEPTEMBER 24, 1993

FIRE MAP #2217::92,93  
 200 MAP: L-21-7

BLOCK 2	LOT	108	8216	PEACEFUL CANYON DRIVE	E/W	PUBLIC STREET
		109	8212			
		110	8208			
		111	8204			
		112	8200			

BLOCK 3	LOT	140	1656	ROYAL CANYON DRIVE	N/S	PUBLIC STREET
		141	1652			
		142	1648			
		143	1644			

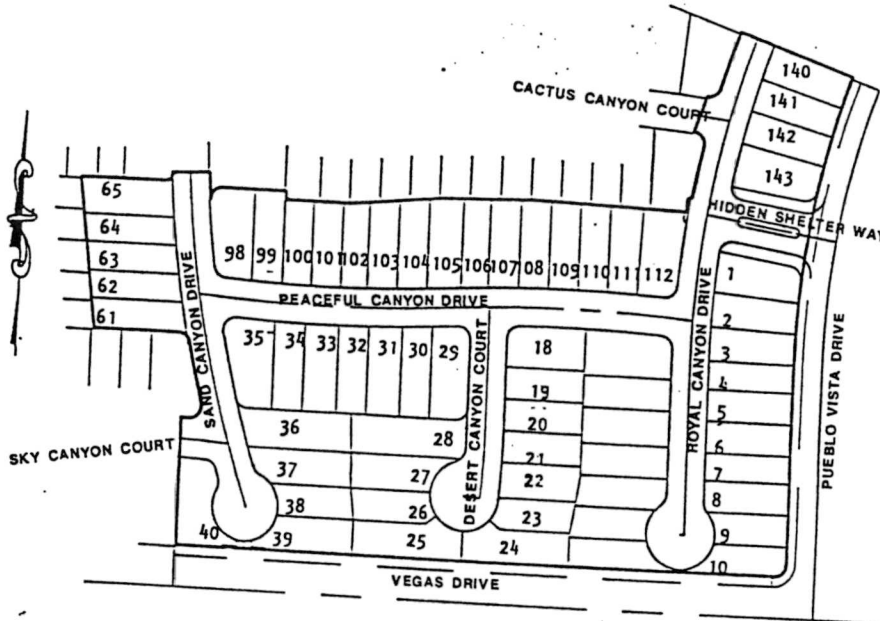
COMMON						
ELEMENTS:	LOT	A	1640	ROYAL CANYON DRIVE	N/S	PUBLIC STREET
		B	1642			
		C	1638			
		D	1641			

STREETS WITH NO ADDRESSES:	CACTUS CANYON COURT	E/W	PUBLIC STREET
	HIDDEN SHELTER WAY	E/W	PUBLIC STREET
	VEGAS DRIVE	E/W	PUBLIC STREET

CITY OF LAS VEGAS  
 DEPARTMENT OF COMMUNITY  
 PLANNING & DEVELOPMENT

*JH* JOHN B. HERBERT, PLANNING ASSISTANT  
 JBH/dr

MASTER SUBDIVISION ADDRESS: 1623 PUEBLO VISTA DRIVE



SEPTEMBER 24, 1993

BONITA CANYON UNIT 1

FIRE MAP #2217::92,93  
200 MAP:L-21-7

---

BLOCK 1	LOT	1	1636	ROYAL CANYON DRIVE	N/S	PUBLIC STREET
		2	1632			
		3	1628			
		4	1624			
		5	1620			
		6	1616			
		7	1612			
		8	1608			
		9	1604			
		10	1600			
		11	1601			
		12	1605			
		13	1609			
		14	1613			
		15	1617			
		16	1621			
		17	1625			
BLOCK 1	LOT	18	1624	DESERT CANYON COURT	N/S	PUBLIC STREET
		19	1620			
		20	1616			
		21	1612			
		22	1608			
		23	1604			
		24	1600			
		25	1601			
		26	1605			
		27	1609			
		28	1613			
BLOCK 1	LOT	29	8229	PEACEFUL CANYON DRIVE	E/W	PUBLIC STREET
		30	8233			
		31	8237			
		32	8241			
		33	8245			
		34	8249			
		35	8253			
BLOCK 1	LOT	36	1612	SAND CANYON DRIVE	N/S	PUBLIC STREET
		37	1608			
		38	1604			
		39	1600			
BLOCK 1	LOT	40	8301	SKY CANYON COURT	E/W	PUBLIC STREET
BLOCK 1	LOT	61	1629	SAND CANYON DRIVE	N/S	PUBLIC STREET
		62	1633			
		63	1637			
		64	1641			
		65	1645			
BLOCK 2	LOT	98	8256	PEACEFUL CANYON DRIVE	E/W	PUBLIC STREET
		99	8252			
		100	8248			
		101	8244			
		102	8240			
		103	8236			
		104	8232			
		105	8228			
		106	8224			
		107	8220			

BONITA CANYON UNIT 1  
 SEPTEMBER 24, 1993

FIRE MAP #2217::92,93  
 200 MAP: L-21-7

BLOCK 2	LOT	108	8216	PEACEFUL CANYON DRIVE	E/W	PUBLIC STREET
		109	8212			
		110	8208			
		111	8204			
		112	8200			

BLOCK 3	LOT	140	1656	ROYAL CANYON DRIVE	N/S	PUBLIC STREET
		141	1652			
		142	1648			
		143	1644			

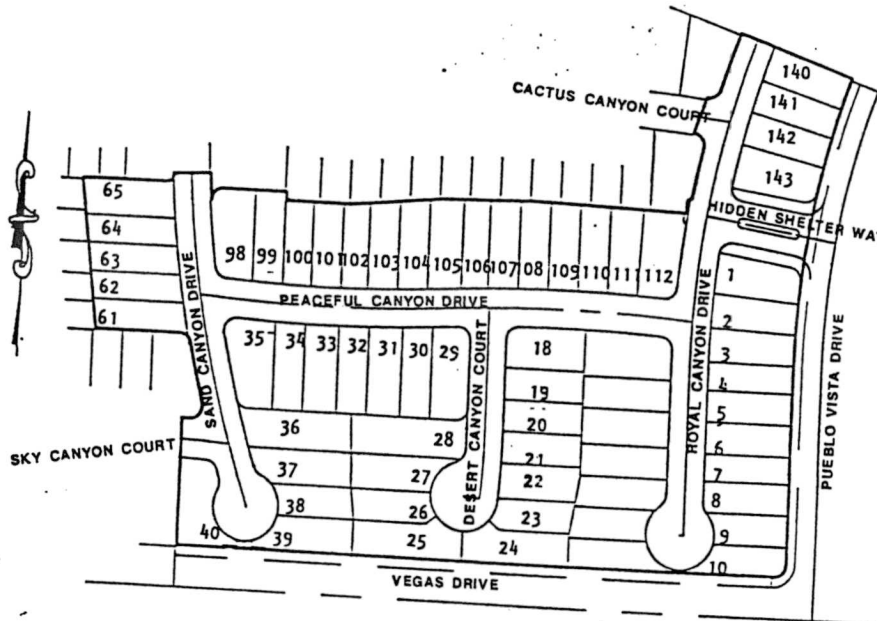
COMMON  
 ELEMENTS: LOT      A      1640      ROYAL CANYON DRIVE      N/S      PUBLIC STREET  
                           B      1642  
                           C      1638  
                           D      1641

STREETS WITH NO ADDRESSES:      CACTUS CANYON COURT      E/W      PUBLIC STREET  
   HIDDEN SHELTER WAY      E/W      PUBLIC STREET  
   VEGAS DRIVE      E/W      PUBLIC STREET

CITY OF LAS VEGAS  
 DEPARTMENT OF COMMUNITY  
 PLANNING & DEVELOPMENT

*JH* JOHN B. HERBERT, PLANNING ASSISTANT  
 JBH/dr

MASTER SUBDIVISION ADDRESS: 1623 PUEBLO VISTA DRIVE



SEPTEMBER 24, 1993

BONITA CANYON UNIT 1

FIRE MAP #2217::92,93  
200 MAP:L-21-7

---

---

BLOCK 1	LOT	1	1636	ROYAL CANYON DRIVE	N/S	PUBLIC STREET
		2	1632			
		3	1628			
		4	1624			
		5	1620			
		6	1616			
		7	1612			
		8	1608			
		9	1604			
		10	1600			
		11	1601			
		12	1605			
		13	1609			
		14	1613			
		15	1617			
		16	1621			
		17	1625			
BLOCK 1	LOT	18	1624	DESERT CANYON COURT	N/S	PUBLIC STREET
		19	1620			
		20	1616			
		21	1612			
		22	1608			
		23	1604			
		24	1600			
		25	1601			
		26	1605			
		27	1609			
		28	1613			
BLOCK 1	LOT	29	8229	PEACEFUL CANYON DRIVE	E/W	PUBLIC STREET
		30	8233			
		31	8237			
		32	8241			
		33	8245			
		34	8249			
		35	8253			
BLOCK 1	LOT	36	1612	SAND CANYON DRIVE	N/S	PUBLIC STREET
		37	1608			
		38	1604			
		39	1600			
BLOCK 1	LOT	40	8301	SKY CANYON COURT	E/W	PUBLIC STREET
BLOCK 1	LOT	61	1629	SAND CANYON DRIVE	N/S	PUBLIC STREET
		62	1633			
		63	1637			
		64	1641			
		65	1645			
BLOCK 2	LOT	98	8256	PEACEFUL CANYON DRIVE	E/W	PUBLIC STREET
		99	8252			
		100	8248			
		101	8244			
		102	8240			
		103	8236			
		104	8232			
		105	8228			
		106	8224			
		107	8220			

BONITA CANYON UNIT 1  
 SEPTEMBER 24, 1993

FIRE MAP #2217::92,93  
 200 MAP: L-21-7

BLOCK 2	LOT	108	8216	PEACEFUL CANYON DRIVE	E/W	PUBLIC STREET
		109	8212			
		110	8208			
		111	8204			
		112	8200			

BLOCK 3	LOT	140	1656	ROYAL CANYON DRIVE	N/S	PUBLIC STREET
		141	1652			
		142	1648			
		143	1644			

COMMON

ELEMENTS: LOT	A	1640	ROYAL CANYON DRIVE	N/S	PUBLIC STREET
	B	1642			
	C	1638			
	D	1641			

STREETS WITH NO ADDRESSES:	CACTUS CANYON COURT	E/W	PUBLIC STREET
	HIDDEN SHELTER WAY	E/W	PUBLIC STREET
	VEGAS DRIVE	E/W	PUBLIC STREET

CITY OF LAS VEGAS  
 DEPARTMENT OF COMMUNITY  
 PLANNING & DEVELOPMENT

*JBH* JOHN B. HERBERT, PLANNING ASSISTANT  
 JBH/dr

MASTER SUBDIVISION ADDRESS: 1623 PUEBLO VISTA DRIVE

