


VALLEY WEST XI - PHASE 5

FIRE MAP #2517::42,43,44
200 MAP: Q-4-3

CORRECTED AUGUST 5, 1994*

BLOCK 4	LOT	16	1613	VERMIEL DRIVE	N/S	PUBLIC STREET
		17	1701			
		18	1705			
		19	1709			
		20	1713			
BLOCK 9	LOT	11	8300	ESMONT LANE	E/W	PUBLIC STREET
		12	8304			
		13	8308			
		14	8312			
		15	8316			
BLOCK 9	LOT	16	1701	CHEDDAR STREET	N/S	PUBLIC STREET
BLOCK 9	LOT	17	8404	OMAR COURT	E/W	PUBLIC STREET
		18	8408			
		19	8412			
		20	8409			
		21	8405			
BLOCK 9	LOT	22	1709	CHEDDAR STREET	N/S	PUBLIC STREET
		23	1713			
BLOCK 9	LOT	31	1708	VERMIEL DRIVE	N/S	PUBLIC STREET
		32	1704			
		33	1700			
BLOCK 10	LOT	15	1608	GUTHRIE DRIVE	N/S	PUBLIC STREET
		16	1604			
		17	1600			
BLOCK 11	LOT	30	1712	CHEDDAR STREET	N/S	PUBLIC STREET
		31	1708			
		32	1704			
		33	1700			

CITY OF LAS VEGAS
DEPARTMENT OF COMMUNITY
PLANNING & DEVELOPMENT


KYLE C. WALTON, SENIOR PLANNER

KCW/dr
MAY 5, 1994

MASTER SUBDIVISION ADDRESS: 1611 VERMIEL DRIVE

*LOTS 16 AND 22, BLOCK 9, HAVE BEEN CHANGED TO
REFLECT AN ADDRESS ON CHEDDAR STREET, INSTEAD
OF OMAR COURT.

VALLEY WEST XI - PHASE 5

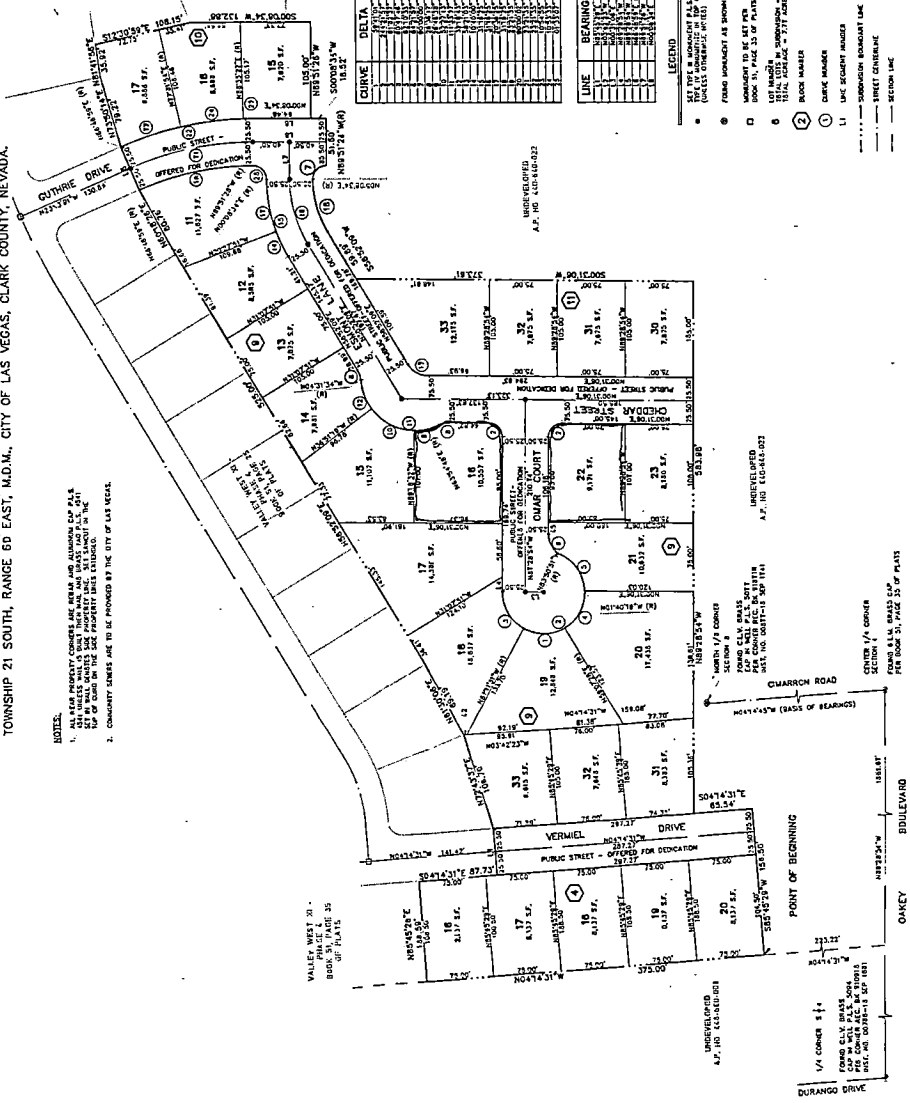
A PORTION OF THE SOUTH HALF (S 1/2) OF THE NORTHWEST QUARTER (NW 1/4) OF SECTION 4, TOWNSHIP 21 SOUTH, RANGE 60 EAST, M.D.M., CITY OF LAS VEGAS, CLARK COUNTY, NEVADA.

NOTES:

1. ALL LOTS SHALL BE OPEN TO THE PUBLIC AND SHALL BE OPEN TO THE PUBLIC FOR THE USE OF THE CITY OF LAS VEGAS.
2. CONVEYANCE DEEDS ARE TO BE PROVIDED BY THE CITY OF LAS VEGAS.



VALLEY WEST XI - PHASE 5 - BOOK 31, PAGE 29



CURVE	DELTA	RADIUS	LENGTH	TANGENT	BEARING
1	11.25	100.00	18.85	100.00	N 89° 56' 18" W
2	11.25	100.00	18.85	100.00	N 89° 56' 18" W
3	11.25	100.00	18.85	100.00	N 89° 56' 18" W
4	11.25	100.00	18.85	100.00	N 89° 56' 18" W
5	11.25	100.00	18.85	100.00	N 89° 56' 18" W
6	11.25	100.00	18.85	100.00	N 89° 56' 18" W
7	11.25	100.00	18.85	100.00	N 89° 56' 18" W
8	11.25	100.00	18.85	100.00	N 89° 56' 18" W
9	11.25	100.00	18.85	100.00	N 89° 56' 18" W
10	11.25	100.00	18.85	100.00	N 89° 56' 18" W
11	11.25	100.00	18.85	100.00	N 89° 56' 18" W
12	11.25	100.00	18.85	100.00	N 89° 56' 18" W
13	11.25	100.00	18.85	100.00	N 89° 56' 18" W
14	11.25	100.00	18.85	100.00	N 89° 56' 18" W
15	11.25	100.00	18.85	100.00	N 89° 56' 18" W
16	11.25	100.00	18.85	100.00	N 89° 56' 18" W
17	11.25	100.00	18.85	100.00	N 89° 56' 18" W
18	11.25	100.00	18.85	100.00	N 89° 56' 18" W
19	11.25	100.00	18.85	100.00	N 89° 56' 18" W
20	11.25	100.00	18.85	100.00	N 89° 56' 18" W
21	11.25	100.00	18.85	100.00	N 89° 56' 18" W
22	11.25	100.00	18.85	100.00	N 89° 56' 18" W
23	11.25	100.00	18.85	100.00	N 89° 56' 18" W
24	11.25	100.00	18.85	100.00	N 89° 56' 18" W
25	11.25	100.00	18.85	100.00	N 89° 56' 18" W
26	11.25	100.00	18.85	100.00	N 89° 56' 18" W
27	11.25	100.00	18.85	100.00	N 89° 56' 18" W
28	11.25	100.00	18.85	100.00	N 89° 56' 18" W
29	11.25	100.00	18.85	100.00	N 89° 56' 18" W
30	11.25	100.00	18.85	100.00	N 89° 56' 18" W
31	11.25	100.00	18.85	100.00	N 89° 56' 18" W
32	11.25	100.00	18.85	100.00	N 89° 56' 18" W
33	11.25	100.00	18.85	100.00	N 89° 56' 18" W

LINE	BEARING	DISTANCE
1	N 89° 56' 18" W	100.00
2	N 89° 56' 18" W	100.00
3	N 89° 56' 18" W	100.00
4	N 89° 56' 18" W	100.00
5	N 89° 56' 18" W	100.00
6	N 89° 56' 18" W	100.00
7	N 89° 56' 18" W	100.00
8	N 89° 56' 18" W	100.00
9	N 89° 56' 18" W	100.00
10	N 89° 56' 18" W	100.00
11	N 89° 56' 18" W	100.00
12	N 89° 56' 18" W	100.00
13	N 89° 56' 18" W	100.00
14	N 89° 56' 18" W	100.00
15	N 89° 56' 18" W	100.00
16	N 89° 56' 18" W	100.00
17	N 89° 56' 18" W	100.00
18	N 89° 56' 18" W	100.00
19	N 89° 56' 18" W	100.00
20	N 89° 56' 18" W	100.00
21	N 89° 56' 18" W	100.00
22	N 89° 56' 18" W	100.00
23	N 89° 56' 18" W	100.00
24	N 89° 56' 18" W	100.00
25	N 89° 56' 18" W	100.00
26	N 89° 56' 18" W	100.00
27	N 89° 56' 18" W	100.00
28	N 89° 56' 18" W	100.00
29	N 89° 56' 18" W	100.00
30	N 89° 56' 18" W	100.00
31	N 89° 56' 18" W	100.00
32	N 89° 56' 18" W	100.00
33	N 89° 56' 18" W	100.00

- LEGEND**
- 1. 1/4 CORNER S 1/4
 - 2. 1/4 CORNER S 1/4
 - 3. 1/4 CORNER S 1/4
 - 4. 1/4 CORNER S 1/4
 - 5. 1/4 CORNER S 1/4
 - 6. 1/4 CORNER S 1/4
 - 7. 1/4 CORNER S 1/4
 - 8. 1/4 CORNER S 1/4
 - 9. 1/4 CORNER S 1/4
 - 10. 1/4 CORNER S 1/4
 - 11. 1/4 CORNER S 1/4
 - 12. 1/4 CORNER S 1/4
 - 13. 1/4 CORNER S 1/4
 - 14. 1/4 CORNER S 1/4
 - 15. 1/4 CORNER S 1/4
 - 16. 1/4 CORNER S 1/4
 - 17. 1/4 CORNER S 1/4
 - 18. 1/4 CORNER S 1/4
 - 19. 1/4 CORNER S 1/4
 - 20. 1/4 CORNER S 1/4
 - 21. 1/4 CORNER S 1/4
 - 22. 1/4 CORNER S 1/4
 - 23. 1/4 CORNER S 1/4
 - 24. 1/4 CORNER S 1/4
 - 25. 1/4 CORNER S 1/4
 - 26. 1/4 CORNER S 1/4
 - 27. 1/4 CORNER S 1/4
 - 28. 1/4 CORNER S 1/4
 - 29. 1/4 CORNER S 1/4
 - 30. 1/4 CORNER S 1/4
 - 31. 1/4 CORNER S 1/4
 - 32. 1/4 CORNER S 1/4
 - 33. 1/4 CORNER S 1/4


VALLEY WEST XI - PHASE 5

FIRE MAP #2517::42,43,44
200 MAP: Q-4-3

CORRECTED AUGUST 5, 1994*

BLOCK 4	LOT	16	1613	VERMIEL DRIVE	N/S	PUBLIC STREET
		17	1701			
		18	1705			
		19	1709			
		20	1713			
BLOCK 9	LOT	11	8300	ESMONT LANE	E/W	PUBLIC STREET
		12	8304			
		13	8308			
		14	8312			
		15	8316			
BLOCK 9	LOT	16	1701	CHEDDAR STREET	N/S	PUBLIC STREET
BLOCK 9	LOT	17	8404	OMAR COURT	E/W	PUBLIC STREET
		18	8408			
		19	8412			
		20	8409			
		21	8405			
BLOCK 9	LOT	22	1709	CHEDDAR STREET	N/S	PUBLIC STREET
		23	1713			
BLOCK 9	LOT	31	1708	VERMIEL DRIVE	N/S	PUBLIC STREET
		32	1704			
		33	1700			
BLOCK 10	LOT	15	1608	GUTHRIE DRIVE	N/S	PUBLIC STREET
		16	1604			
		17	1600			
BLOCK 11	LOT	30	1712	CHEDDAR STREET	N/S	PUBLIC STREET
		31	1708			
		32	1704			
		33	1700			

CITY OF LAS VEGAS
DEPARTMENT OF COMMUNITY
PLANNING & DEVELOPMENT


KYLE C. WALTON, SENIOR PLANNER

KCW/dr
MAY 5, 1994

MASTER SUBDIVISION ADDRESS: 1611 VERMIEL DRIVE

*LOTS 16 AND 22, BLOCK 9, HAVE BEEN CHANGED TO
REFLECT AN ADDRESS ON CHEDDAR STREET, INSTEAD
OF OMAR COURT.

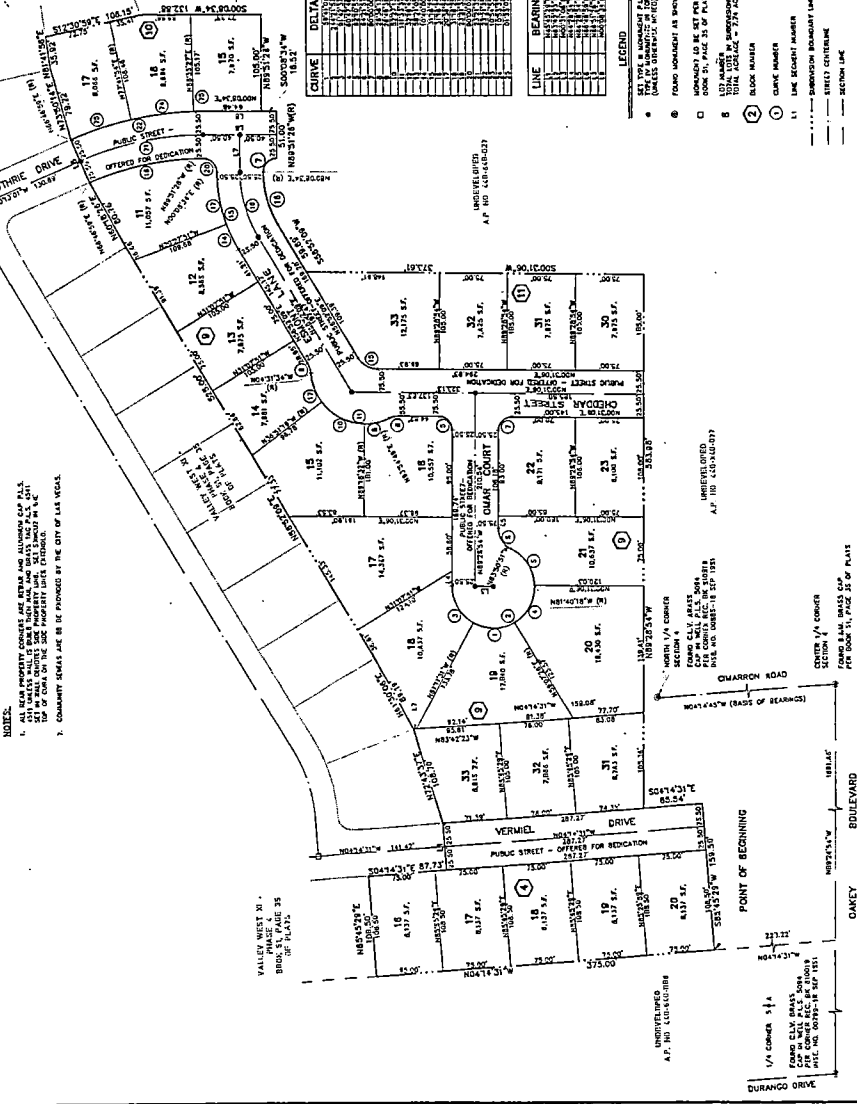
VALLEY WEST XI - PHASE 5

A PORTION OF THE SOUTH HALF (S 1/2) OF THE NORTHWEST QUARTER (NW 1/4) OF SECTION 4, TOWNSHIP 21 SOUTH, RANGE 60 EAST, M.D.M., CITY OF LAS VEGAS, CLARK COUNTY, NEVADA.

INDEX:

- 1. THIS PROPERTY ADDRESS AS SHOWN AND INDICATED ON THIS PLAN.
- 2. THIS MAP SHALL BE FILED IN THE PUBLIC RECORDS OF THE CLERK OF THE COUNTY OF CLARK, NEVADA, AND SHALL BE A PART OF THE PUBLIC RECORDS OF THE CLERK OF THE COUNTY OF CLARK, NEVADA.
- 3. COMMUNITY SCENES ARE TO BE PROVIDED BY THE CITY OF LAS VEGAS.

VALLEY WEST XI -
PHASE 5
BOOK 51, PAGE 35
OF 31 PAGES



CURVE	DELTA	RADIUS	LENGTH	TANGENT
1	10.0000	10.0000	10.0000	10.0000
2	10.0000	10.0000	10.0000	10.0000
3	10.0000	10.0000	10.0000	10.0000
4	10.0000	10.0000	10.0000	10.0000
5	10.0000	10.0000	10.0000	10.0000
6	10.0000	10.0000	10.0000	10.0000
7	10.0000	10.0000	10.0000	10.0000
8	10.0000	10.0000	10.0000	10.0000
9	10.0000	10.0000	10.0000	10.0000
10	10.0000	10.0000	10.0000	10.0000
11	10.0000	10.0000	10.0000	10.0000
12	10.0000	10.0000	10.0000	10.0000
13	10.0000	10.0000	10.0000	10.0000
14	10.0000	10.0000	10.0000	10.0000
15	10.0000	10.0000	10.0000	10.0000
16	10.0000	10.0000	10.0000	10.0000
17	10.0000	10.0000	10.0000	10.0000
18	10.0000	10.0000	10.0000	10.0000
19	10.0000	10.0000	10.0000	10.0000
20	10.0000	10.0000	10.0000	10.0000
21	10.0000	10.0000	10.0000	10.0000
22	10.0000	10.0000	10.0000	10.0000
23	10.0000	10.0000	10.0000	10.0000
24	10.0000	10.0000	10.0000	10.0000
25	10.0000	10.0000	10.0000	10.0000
26	10.0000	10.0000	10.0000	10.0000
27	10.0000	10.0000	10.0000	10.0000
28	10.0000	10.0000	10.0000	10.0000
29	10.0000	10.0000	10.0000	10.0000
30	10.0000	10.0000	10.0000	10.0000
31	10.0000	10.0000	10.0000	10.0000
32	10.0000	10.0000	10.0000	10.0000
33	10.0000	10.0000	10.0000	10.0000

LINE	BEARING	DISTANCE
1	N 89° 23' 24" W	139.25' ±
2	S 89° 23' 24" E	139.25' ±
3	N 89° 23' 24" W	139.25' ±
4	S 89° 23' 24" E	139.25' ±
5	N 89° 23' 24" W	139.25' ±
6	S 89° 23' 24" E	139.25' ±
7	N 89° 23' 24" W	139.25' ±
8	S 89° 23' 24" E	139.25' ±
9	N 89° 23' 24" W	139.25' ±
10	S 89° 23' 24" E	139.25' ±
11	N 89° 23' 24" W	139.25' ±
12	S 89° 23' 24" E	139.25' ±
13	N 89° 23' 24" W	139.25' ±
14	S 89° 23' 24" E	139.25' ±
15	N 89° 23' 24" W	139.25' ±
16	S 89° 23' 24" E	139.25' ±
17	N 89° 23' 24" W	139.25' ±
18	S 89° 23' 24" E	139.25' ±
19	N 89° 23' 24" W	139.25' ±
20	S 89° 23' 24" E	139.25' ±
21	N 89° 23' 24" W	139.25' ±
22	S 89° 23' 24" E	139.25' ±
23	N 89° 23' 24" W	139.25' ±
24	S 89° 23' 24" E	139.25' ±
25	N 89° 23' 24" W	139.25' ±
26	S 89° 23' 24" E	139.25' ±
27	N 89° 23' 24" W	139.25' ±
28	S 89° 23' 24" E	139.25' ±
29	N 89° 23' 24" W	139.25' ±
30	S 89° 23' 24" E	139.25' ±
31	N 89° 23' 24" W	139.25' ±
32	S 89° 23' 24" E	139.25' ±
33	N 89° 23' 24" W	139.25' ±

- LEGEND:
- 1. THIS MAP IS DRAWING AS SHOWN AND INDICATED ON THIS PLAN.
 - 2. THIS MAP SHALL BE FILED IN THE PUBLIC RECORDS OF THE CLERK OF THE COUNTY OF CLARK, NEVADA, AND SHALL BE A PART OF THE PUBLIC RECORDS OF THE CLERK OF THE COUNTY OF CLARK, NEVADA.
 - 3. COMMUNITY SCENES ARE TO BE PROVIDED BY THE CITY OF LAS VEGAS.
 - 4. UNDEVELOPED AREAS ARE SHOWN AND INDICATED ON THIS PLAN.
 - 5. MONUMENT TO BE SET PER BOOK 51, PAGE 35 OF PLATS.
 - 6. TOTAL AREA OF SUBDIVISION IS 33 ACRES, 100 SQ. FT. APPROXIMATELY.
 - 7. BLOCK NUMBER
 - 8. CURVE NUMBER
 - 9. LINE SECTANT NUMBER
 - 10. SECTION BOUNDARY LINE
 - 11. STREET CENTERLINE
 - 12. SECTION LINE