

# BROOKFIELD ( PARCEL "U" )

Recorded in Book 84 Page 100 of Plats

200 Scale Map Location: K-26-2

Fire Dept. District Map # 2313:16,17,26

MASTER SITE ADDRESS: 1411 SAGEBERRY DR

BLOCK 1	LOT	1	1312	ANIME DR	N/S	PUBLIC STREET
		2	1308			
		3	1304			
		4	1300			
		5	1220			
		6	1216			
		7	1212			
		8	1208			
		9	1204			
		10	1200			

BLOCK 1	LOT	11	11141	CERISE ROSE AVE	EW	PUBLIC STREET
		12	11145			
		13	11149			
		14	11153			
		15	11201			
		16	11205			
		17	11209			
		18	11213			
		19	11217			
		20	11221			
		21	11225			
		22	11229			
		23	11233			

BLDCK 1	LOT	24	1201	SWANBROOKE DR	N/S	PUBLIC STREET
		25	1205			
		26	1209			
		27	1213			
		28	1217			
		29	1221			
		30	1225			
		31	1229			
		32	1233			
		33	1237			
		34	1301			
		35	1305			
		36	1309			
		37	1313			
		38	1317			
		39	1321			
		40	1325			
		41	1329			
		42	1333			
		43	1337			
		44	1401			
		45	1405			
		46	1409			
		47	1413			

## BROOKFIELD ( PARCEL "U" )

BLOCK 1	LOT	48	1417	SWANBROOKE DR	N/S	PUBLIC STREET
		49	1421			
		50	1425			
		51	1429			
		52	1433			
		53	1437			
		54	1441			
		55	1445			
BLOCK 1	LOT	56	11240	ROSE REFLET PL	E/W	PUBLIC STREET
		57	11236			
		58	11232			
		59	11228			
		60	11224			
		61	11220			
		62	11216			
		63	11212			
		64	11208			
		65	11204			
		66	11200			
BLOCK 2	LOT	67	11164	ROSE REFLET PL	E/W	PUBLIC STREET
		68	11160			
		69	11156			
		70	11152			
		71	11148			
		72	11144			
		73	11140			
BLOCK 2	LOT	74	1420	ANIME DR	N/S	PUBLIC STREET
		75	1416			
		76	1412			
		77	1408			
		78	1404			
		79	1400			
BLOCK 3	LOT	80	1209	ANIME DR	N/S	PUBLIC STREET
		81	1213			
		82	1217			
		83	1221			
		84	1301			
		85	1305			
		86	1309			
BLOCK 3	LOT	87	11141	VIVID AVE	N/S	PUBLIC STREET
		88	11145			
		89	11149			
		90	11153			
		91	11157			
		92	11161			
		93	11165			
		94	11169			
		95	11173			
BLOCK 3	LOT	96	11149	ROSE REFLET PL	E/W	PUBLIC STREET
		97	11153			

## BROOKFIELD ( PARCEL "U" )

BLOCK 3	LOT	98	11157	ROSE REFLET PL	E/W	PUBLIC STREET
		99	11161			
		100	11165			
BLOCK 3	LOT	101	1432	DREAM BRIDGE DR	N/S	PUBLIC STREET
		102	1428			
		103	1424			
		104	1420			
		105	1412			
		106	1404			
		107	1400			
		108	1324			
		109	1320			
		110	1316			
		111	1312			
		112	1308			
		113	1304			
		114	1300			
		115	1220			
		116	1216			
		117	1212			
		118	1208			
		119	1204			
		120	1200			
BLOCK 4	LOT	121	1201	DREAM BRIDGE DR	N/S	PUBLIC STREET
		122	1205			
		123	1209			
		124	1213			
		125	1217			
		126	1221			
		127	1301			
		128	1305			
		129	1309			
		130	1313			
		131	1317			
		132	1321			
		133	1325			
		134	1401			
		135	1405			
		136	1409			
		137	1413			
		138	1417			
		139	1421			
		140	1425			
BLOCK 4	LOT	141	11209	ROSE REFLET PL	E/W	PUBLIC STREET
		142	11213			
		143	11217			
		144	11221			
		145	11225			
BLOCK 4	LOT	146	1436	SWANBROOKE DR.	N/S	PUBLIC STREET
		147	1428			
		148	1424			
		149	1416			


# BROOKFIELD ( PARCEL "U" )

BLOCK 4	LOT	150	1412	SWANBROOKE DR.	N/S	PUBLIC STREET
		151	1408			
		152	1404			
		153	1400			
		154	1336			
		155	1332			
		156	1328			
		157	1324			
		158	1320			
		159	1316			
		160	1308			
		161	1304			
		162	1300			
		163	1236			
		164	1232			
		165	1228			
		166	1224			
		167	1220			
		168	1216			
		169	1212			
		170	1208			
Common Area	A	11134	VIVID AVE	E/W	PUBLIC STREET	
	B	11135				
	D	11138				
Common Area	E	1411	ANIME DR	(PARK)	N/S	PUBLIC STREET
	F	1422				

No addresses on MAY BLOOM LANE (N/S)

ORIGINAL DATE: 6/24/1998

CITY OF LAS VEGAS  
PLANNING & DEVELOPMENT DEPARTMENT

  
JOHN B HERBERT, PLANNER I

# FINAL MAP OF BROOKFIELD (PARCEL 00U00)

(A COMMON INTEREST COMMUNITY)

ALL OF LOT 3 AS SAID LOT IS SHOWN BY THE FINAL MAP OF "THE ARBORS AT SUMMERLIN VILLAGE 11/12, UNIT NO. 3 A-B A PLANNED COMMUNITY" IN BOOK 78 OF PLATS, PAGE 62, OFFICIAL RECORDS OF CLARK COUNTY, NEVADA BEING A PORTION OF SECTIONS 23 & 26, TOWNSHIP 26 SOUTH, RANGE 59 EAST, M.D.M., CITY OF LAS VEGAS, CLARK COUNTY, NEVADA.

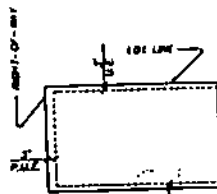
### BASIS OF BEARINGS:

THE BASIS OF BEARINGS OF THIS DESCRIPTION IS THE SOUTHERLY LINE OF SAID LOT 3 SHOWN AS SOUTH 88°30'30" WEST, IN BOOK 78 OF PLATS PAGE 62, OFFICIAL RECORDS CLARK COUNTY.

TOTAL ACREAGE = 25.38  
TOTAL LOTS = 170

### NOTES:

1. ALL NEAR LOT CORNERS SHALL BE SET WITH 1/2" BAIL AND THE P.L.S. SET ON BLOCK WALL AND ALL FRONT AND SIDE LOT CORNERS ADJOINING PUBLIC RIGHT-OF-WAY SHALL BE MARKED BY THE SUBSTITUTION OF THE BACK OF CURBS ON THE PRODUCTION OF THE PROPERTY LINES.
2. ALL COMMON LOTS SHALL BE MAINTAINED BY THE SUMMERLIN HOMEOWNERS ASSOCIATION.
3. DIRECT VEHICULAR ACCESS TO SAGEBERRY DRIVE THROUGH COMMON ELEMENTS FROM ADJOINING LOTS IS PROHIBITED.



TYPICAL P.U.E. & U.E.  
M.T.S.

### REFERENCES:

- ① PLAT BOOK 78, PAGE 62
- ② PLAT BOOK 78, PAGE 62

### LEGEND:

- X SET NEAR W/AL CAP PLS / SET BY REFERENCE MARKERS
- SET NEAR W/AL CAP PLS / SET
- FOUND NEAR W/AL CAP PLS / LINE UNLESS OTHERWISE INDICATED
- ②) RADIAL BEARING OF LINE
- LOT LINE
- RIGHT-OF-WAY LINE
- UNIT BOUNDARY LINE
- CENTERLINE
- 4.00' SIDEWALK EASEMENT
- - - MATCHLINE
- ② PUBLIC STREETS DESIGNATED TO THE CITY OF LAS VEGAS PER THIS MAP
- ① BLOCK NUMBERS
- ③ (S.V.P.C.) 20'11" MOBILITY RESTRICTION EASEMENT PROHIBITLY MAINTAINED WITH NO LANDSCAPING TALLER THAN 30" HEIGHT

### LINE TABLE:

LINE	DESCRIPTION	BEARING	DISTANCE
1	...	...	...
2	...	...	...
3	...	...	...
4	...	...	...
5	...	...	...
6	...	...	...
7	...	...	...
8	...	...	...
9	...	...	...
10	...	...	...
11	...	...	...
12	...	...	...
13	...	...	...
14	...	...	...
15	...	...	...
16	...	...	...
17	...	...	...
18	...	...	...
19	...	...	...
20	...	...	...

### CURVE TABLE:

STATION	CHORD BEARING	CHORD DISTANCE	CHORD BEARING	CHORD DISTANCE	CHORD BEARING	CHORD DISTANCE
1+00	...	...	...	...	...	...
1+10	...	...	...	...	...	...
1+20	...	...	...	...	...	...
1+30	...	...	...	...	...	...
1+40	...	...	...	...	...	...
1+50	...	...	...	...	...	...
2+00	...	...	...	...	...	...
2+10	...	...	...	...	...	...
2+20	...	...	...	...	...	...
2+30	...	...	...	...	...	...
2+40	...	...	...	...	...	...
2+50	...	...	...	...	...	...
3+00	...	...	...	...	...	...
3+10	...	...	...	...	...	...
3+20	...	...	...	...	...	...
3+30	...	...	...	...	...	...
3+40	...	...	...	...	...	...
3+50	...	...	...	...	...	...
4+00	...	...	...	...	...	...
4+10	...	...	...	...	...	...
4+20	...	...	...	...	...	...
4+30	...	...	...	...	...	...
4+40	...	...	...	...	...	...
4+50	...	...	...	...	...	...
5+00	...	...	...	...	...	...
5+10	...	...	...	...	...	...
5+20	...	...	...	...	...	...
5+30	...	...	...	...	...	...
5+40	...	...	...	...	...	...
5+50	...	...	...	...	...	...

COMMON LOT 11, CITY OF LAS VEGAS (EASEMENT) AND PUBLIC GRASSLAND (EASEMENT) WITH PRIVATE SURFACE MAINTENANCE GRANTED PER THIS MAP, 2,455 SQUARE FEET

LOT 4 OF BOOK 78, PAGE 62 OF PLATS

# FINAL MAP OF BROOKFIELD ( PARCEL "U" )

( A COMMON INTEREST COMMUNITY )

ALL OF LOT 3 AS SAID LOT IS SHOWN ON THE FINAL MAP OF "THE ARBORS AT SUMMERLIN VILLAGE 11/12, UNIT NO. 3 A-B A PLANNED COMMUNITY" IN BOOK 78 OF PLATS, PAGE 82, OFFICIAL RECORDS OF CLARK COUNTY, NEVADA BEING A PORTION OF SECTIONS 23 & 26, TOWNSHIP 20 SOUTH, RANGE 50 EAST, M.D.M., CITY OF LAS VEGAS, CLARK COUNTY, NEVADA.

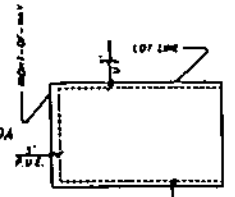
### BASIS OF BEARINGS:

THE BASIS OF BEARING OF THIS DESCRIPTION IS THE SOUTHERLY LINE OF SAID LOT 3 SHOWN AS SOUTH 88°35' WEST, IN BOOK 78 OF PLATS PAGE 82, OFFICIAL RECORDS CLARK COUNTY.

### REFERENCES:

- ① PLAT BOOK 78, PAGE 82
- ② PLAT BOOK 78, PAGE 82

TOTAL ACREAGE = 25.36  
TOTAL LOTS = 170

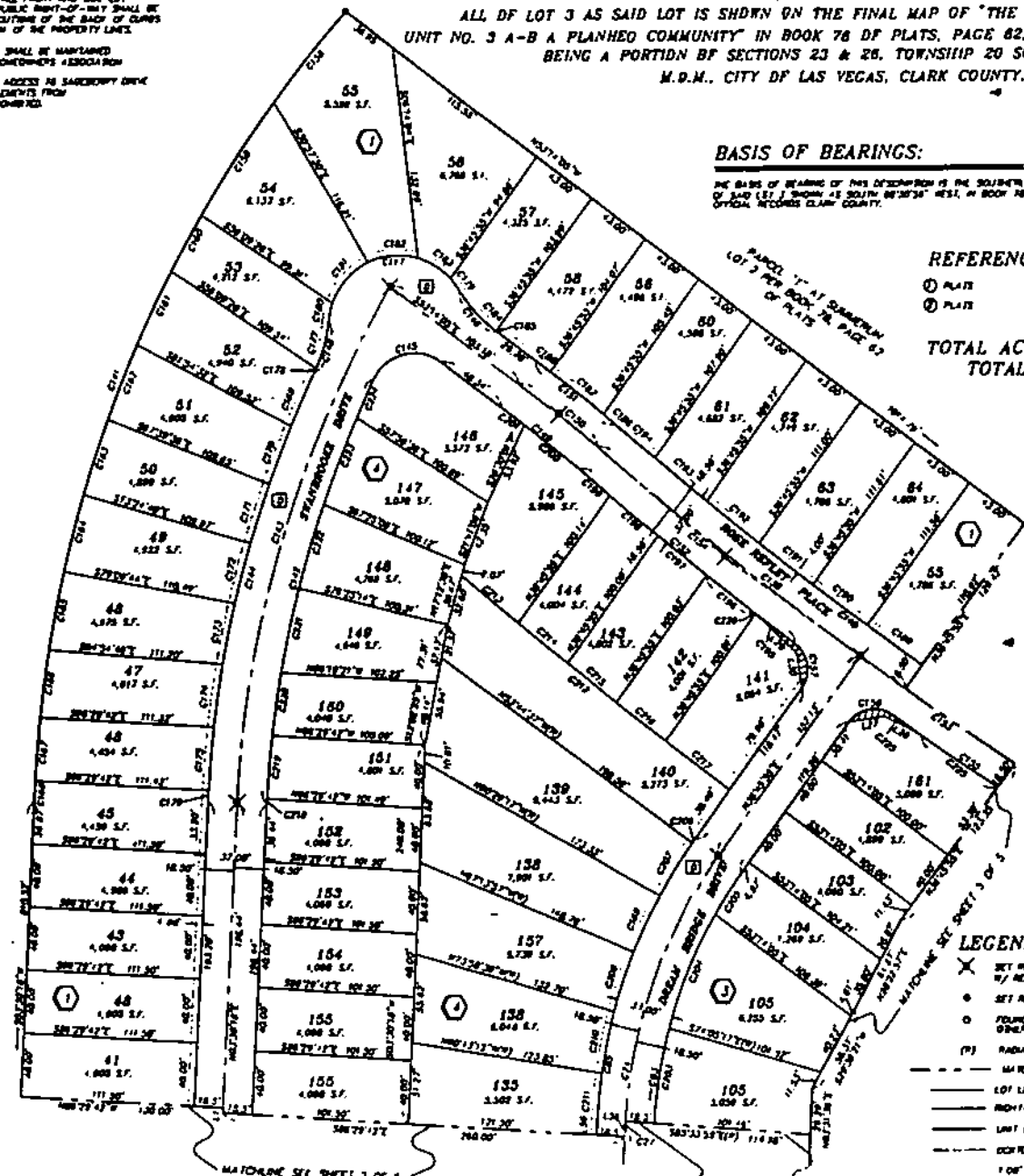


TYPICAL P.U.E. & U.E.  
N.I.S

### CURVE TABLE:

STATION	CHORD BEARING	CHORD DISTANCE	CHORD BEARING	CHORD DISTANCE	CHORD BEARING	CHORD DISTANCE	CHORD BEARING	CHORD DISTANCE
1								
2								
3								
4								
5								
6								
7								
8								
9								
10								
11								
12								
13								
14								
15								
16								
17								
18								
19								
20								
21								
22								
23								
24								
25								
26								
27								
28								
29								
30								
31								
32								
33								
34								
35								
36								
37								
38								
39								
40								
41								
42								
43								
44								
45								
46								
47								
48								
49								
50								
51								
52								
53								
54								
55								
56								
57								
58								
59								
60								
61								
62								
63								
64								
65								
66								
67								
68								
69								
70								
71								
72								
73								
74								
75								
76								
77								
78								
79								
80								
81								
82								
83								
84								
85								
86								
87								
88								
89								
90								
91								
92								
93								
94								
95								
96								
97								
98								
99								
100								
101								
102								
103								
104								
105								
106								
107								
108								
109								
110								
111								
112								
113								
114								
115								
116								
117								
118								
119								
120								
121								
122								
123								
124								
125								
126								
127								
128								
129								
130								
131								
132								
133								
134								
135								
136								
137								
138								
139								
140								
141								
142								
143								
144								
145								
146								
147								
148								
149								
150								
151								
152								
153								
154								
155								
156								
157								
158								
159								
160								
161								
162								
163								
164								
165								
166								
167								
168								
169								
170								

- NOTES:**
1. ALL NEAR LOT CORNERS SHALL BE SET WITH A NAIL AND THE P.L.S. 3/8" ON BLOCK WALL AND ALL FRONT AND SIDE LOT CORNERS FOLLOWING PUBLIC RIGHT-OF-WAY SHALL BE MARKED BY THE SURVEYING OF THE BOUNDARY OF THE PROLONGATION OF THE PROPERTY LINE.
  2. ALL COMMON LOTS SHALL BE MAINTAINED BY THE SUMMERLIN HOMEOWNERS ASSOCIATION.
  3. DIRECT VEHICULAR ACCESS TO SUBSERVING DRIVE THROUGH COMMON ELEMENTS FROM ADJUTING LOTS IS PROHIBITED.



**LINE TABLE:**

LINE NO.	BEARING	DISTANCE
1		
2		
3		
4		
5		
6		
7		
8		
9		
10		
11		
12		
13		
14		
15		
16		
17		
18		
19		
20		
21		
22		
23		
24		
25		
26		
27		
28		
29		
30		
31		
32		
33		
34		
35		
36		
37		
38		
39		
40		
41		
42		
43		
44		
45		
46		
47		
48		
49		
50		
51		
52		
53		
54		
55		
56		
57		
58		
59		
60		
61		
62		
63		
64		
65		
66		
67		
68		
69		
70		
71		
72		
73		
74		
75		
76		
77		
78		
79		
80		
81		
82		
83		
84		
85		
86		
87		
88		
89		
90		
91		
92		
93		
94		
95		
96		
97		
98		
99		
100		
101		
102		
103		
104		
105		
106		
107		
108		
109		
110		
111		
112		
113		
114		
115		
116		
117		
118		
119		
120		
121		
122		
123		
124		
125		
126		
127		
128		
129		
130		
131		
132		
133		
134		
135		
136		
137		
138		
139		
140		
141		
142		
143		
144		
145		
146		
147		
148		
149		
150		
151		
152		
153		
154		
155		
156		
157		
158		
159		
160		
161		
162		
163		
164		
165		
166		
167		
168		
169		
170		

- LEGEND:**
- X SET NEAR 1/4" CAP PLS. 3/8" BY REFERENCE MONUMENTS
  - SET NEAR



# FINAL MAP OF BROOKFIELD (PARCEL "U")

(A COMMON INTEREST COMMUNITY)  
ALL OF LOT 3 AS SAID LOT IS SHOWN ON THE FINAL MAP OF "THE ARBORS AT SUMMERLIN VILLAGE 11/12, UNIT NO. 3 A-B A PLANNED COMMUNITY" IN BOOK 78 OF PLATS, PAGE 82, OFFICIAL RECORDS OF CLARK COUNTY, NEVADA BEING A PORTION OF SECTIONS 23 & 28, TOWNSHIP 20 SOUTH, RANGE 50 EAST, N.D.M., CITY OF LAS VEGAS, CLARK COUNTY, NEVADA.

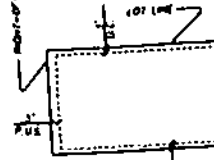
### BASIS OF BEARINGS:

THE BASIS OF BEARINGS OF THIS DESCRIPTION IS THE SOUTHERLY LINE OF SAID LOT 3 SHOWN AS SOUTH 89°23'30" WEST, IN BOOK 78 OF PLATS PAGE 82, OFFICIAL RECORDS CLARK COUNTY.

TOTAL ACREAGE = 24.74  
TOTAL LOTS = 170

### LINE TABLE:

LINE NO.	BEARING	DISTANCE
1	S 89° 23' 30" W	111.50
2	S 89° 23' 30" W	111.50
3	S 89° 23' 30" W	111.50
4	S 89° 23' 30" W	111.50
5	S 89° 23' 30" W	111.50
6	S 89° 23' 30" W	111.50
7	S 89° 23' 30" W	111.50
8	S 89° 23' 30" W	111.50
9	S 89° 23' 30" W	111.50
10	S 89° 23' 30" W	111.50
11	S 89° 23' 30" W	111.50
12	S 89° 23' 30" W	111.50
13	S 89° 23' 30" W	111.50
14	S 89° 23' 30" W	111.50
15	S 89° 23' 30" W	111.50
16	S 89° 23' 30" W	111.50
17	S 89° 23' 30" W	111.50
18	S 89° 23' 30" W	111.50
19	S 89° 23' 30" W	111.50
20	S 89° 23' 30" W	111.50
21	S 89° 23' 30" W	111.50
22	S 89° 23' 30" W	111.50
23	S 89° 23' 30" W	111.50
24	S 89° 23' 30" W	111.50
25	S 89° 23' 30" W	111.50
26	S 89° 23' 30" W	111.50
27	S 89° 23' 30" W	111.50
28	S 89° 23' 30" W	111.50
29	S 89° 23' 30" W	111.50
30	S 89° 23' 30" W	111.50
31	S 89° 23' 30" W	111.50
32	S 89° 23' 30" W	111.50
33	S 89° 23' 30" W	111.50
34	S 89° 23' 30" W	111.50
35	S 89° 23' 30" W	111.50
36	S 89° 23' 30" W	111.50
37	S 89° 23' 30" W	111.50
38	S 89° 23' 30" W	111.50
39	S 89° 23' 30" W	111.50
40	S 89° 23' 30" W	111.50
41	S 89° 23' 30" W	111.50
42	S 89° 23' 30" W	111.50
43	S 89° 23' 30" W	111.50
44	S 89° 23' 30" W	111.50
45	S 89° 23' 30" W	111.50
46	S 89° 23' 30" W	111.50
47	S 89° 23' 30" W	111.50
48	S 89° 23' 30" W	111.50
49	S 89° 23' 30" W	111.50
50	S 89° 23' 30" W	111.50
51	S 89° 23' 30" W	111.50
52	S 89° 23' 30" W	111.50
53	S 89° 23' 30" W	111.50
54	S 89° 23' 30" W	111.50
55	S 89° 23' 30" W	111.50
56	S 89° 23' 30" W	111.50
57	S 89° 23' 30" W	111.50
58	S 89° 23' 30" W	111.50
59	S 89° 23' 30" W	111.50
60	S 89° 23' 30" W	111.50
61	S 89° 23' 30" W	111.50
62	S 89° 23' 30" W	111.50
63	S 89° 23' 30" W	111.50
64	S 89° 23' 30" W	111.50
65	S 89° 23' 30" W	111.50
66	S 89° 23' 30" W	111.50
67	S 89° 23' 30" W	111.50
68	S 89° 23' 30" W	111.50
69	S 89° 23' 30" W	111.50
70	S 89° 23' 30" W	111.50
71	S 89° 23' 30" W	111.50
72	S 89° 23' 30" W	111.50
73	S 89° 23' 30" W	111.50
74	S 89° 23' 30" W	111.50
75	S 89° 23' 30" W	111.50
76	S 89° 23' 30" W	111.50
77	S 89° 23' 30" W	111.50
78	S 89° 23' 30" W	111.50
79	S 89° 23' 30" W	111.50
80	S 89° 23' 30" W	111.50
81	S 89° 23' 30" W	111.50
82	S 89° 23' 30" W	111.50
83	S 89° 23' 30" W	111.50
84	S 89° 23' 30" W	111.50
85	S 89° 23' 30" W	111.50
86	S 89° 23' 30" W	111.50
87	S 89° 23' 30" W	111.50
88	S 89° 23' 30" W	111.50
89	S 89° 23' 30" W	111.50
90	S 89° 23' 30" W	111.50
91	S 89° 23' 30" W	111.50
92	S 89° 23' 30" W	111.50
93	S 89° 23' 30" W	111.50
94	S 89° 23' 30" W	111.50
95	S 89° 23' 30" W	111.50
96	S 89° 23' 30" W	111.50
97	S 89° 23' 30" W	111.50
98	S 89° 23' 30" W	111.50
99	S 89° 23' 30" W	111.50
100	S 89° 23' 30" W	111.50
101	S 89° 23' 30" W	111.50
102	S 89° 23' 30" W	111.50
103	S 89° 23' 30" W	111.50
104	S 89° 23' 30" W	111.50
105	S 89° 23' 30" W	111.50
106	S 89° 23' 30" W	111.50
107	S 89° 23' 30" W	111.50
108	S 89° 23' 30" W	111.50
109	S 89° 23' 30" W	111.50
110	S 89° 23' 30" W	111.50
111	S 89° 23' 30" W	111.50
112	S 89° 23' 30" W	111.50
113	S 89° 23' 30" W	111.50
114	S 89° 23' 30" W	111.50
115	S 89° 23' 30" W	111.50
116	S 89° 23' 30" W	111.50
117	S 89° 23' 30" W	111.50
118	S 89° 23' 30" W	111.50
119	S 89° 23' 30" W	111.50
120	S 89° 23' 30" W	111.50
121	S 89° 23' 30" W	111.50
122	S 89° 23' 30" W	111.50
123	S 89° 23' 30" W	111.50
124	S 89° 23' 30" W	111.50
125	S 89° 23' 30" W	111.50
126	S 89° 23' 30" W	111.50
127	S 89° 23' 30" W	111.50
128	S 89° 23' 30" W	111.50
129	S 89° 23' 30" W	111.50
130	S 89° 23' 30" W	111.50
131	S 89° 23' 30" W	111.50
132	S 89° 23' 30" W	111.50
133	S 89° 23' 30" W	111.50
134	S 89° 23' 30" W	111.50
135	S 89° 23' 30" W	111.50
136	S 89° 23' 30" W	111.50
137	S 89° 23' 30" W	111.50
138	S 89° 23' 30" W	111.50
139	S 89° 23' 30" W	111.50
140	S 89° 23' 30" W	111.50
141	S 89° 23' 30" W	111.50
142	S 89° 23' 30" W	111.50
143	S 89° 23' 30" W	111.50
144	S 89° 23' 30" W	111.50
145	S 89° 23' 30" W	111.50
146	S 89° 23' 30" W	111.50
147	S 89° 23' 30" W	111.50
148	S 89° 23' 30" W	111.50
149	S 89° 23' 30" W	111.50
150	S 89° 23' 30" W	111.50
151	S 89° 23' 30" W	111.50
152	S 89° 23' 30" W	111.50
153	S 89° 23' 30" W	111.50
154	S 89° 23' 30" W	111.50
155	S 89° 23' 30" W	111.50
156	S 89° 23' 30" W	111.50
157	S 89° 23' 30" W	111.50
158	S 89° 23' 30" W	111.50
159	S 89° 23' 30" W	111.50
160	S 89° 23' 30" W	111.50
161	S 89° 23' 30" W	111.50
162	S 89° 23' 30" W	111.50
163	S 89° 23' 30" W	111.50
164	S 89° 23' 30" W	111.50
165	S 89° 23' 30" W	111.50
166	S 89° 23' 30" W	111.50
167	S 89° 23' 30" W	111.50
168	S 89° 23' 30" W	111.50
169	S 89° 23' 30" W	111.50
170	S 89° 23' 30" W	111.50



TYPICAL P.U.E. & U.E.  
N.T.S.

**NOTES:**

- ALL NEAR LOT CORNERS SHALL BE SET WITH A NAIL AND THE P.L.S. 3/8" OR BLOCK SHALL AND ALL FRONT AND SIDE LOT CORNERS ADJOINING PUBLIC RIGHT-OF-WAY SHALL BE MARKED BY THE SAUCING OF THE BACK OF CURBS ON THE PROLONGATION OF THE PROPERTY LINES.
- ALL COMMON LOTS SHALL BE MAINTAINED BY THE SUMMERLIN HOMEOWNERS ASSOCIATION.
- DIRECT VEHICULAR ACCESS TO SACRILEGIOUS DRIVE THROUGH COMMON ELEMENTS FROM ADJOINING LOTS IS PROHIBITED.

**REFERENCES:**

- ① PLATS BOOK 78 PAGE 82
- ② PLATS BOOK 78 PAGE 82

- LEGEND:**
- X SET NEAR W/AL CAP PLS # 3/8" P/ REFERENCE MARKETS
  - o SET NEAR W/AL CAP PLS # 3/8"
  - o FOUND NEAR W/AL CAP PLS # 3/8" UNLESS OTHERWISE INDICATED
  - (S) RADIAL BEARINGS ON LINE
  - 10' SIDEWALK EASEMENT
  - LOT LINE
  - RIGHT-OF-WAY LINE
  - UTILITY BOUNDARY LINE
  - CENTERLINE
  - MATCHLINE
  - ② PUBLIC STREETS DEDICATED TO THE CITY OF LAS VEGAS
  - ① BLOCK NUMBERS
  - (S.T.R.C.) RIGHT VISIBILITY RESTRICTION (ARTISTRY) - MAINTAINED WITH NO LANDSCAPING TALLER THAN 30 FEET

### CURVE TABLE:

LINE NO.	BEARING	DISTANCE	CHORD BEARING	CHORD DISTANCE	ARC DISTANCE
1	S 89° 23' 30" W	111.50			
2	S 89° 23' 30" W	111.50			
3	S 89° 23' 30" W	111.50			
4	S 89° 23' 30" W	111.50			
5	S 89° 23' 30" W	111.50			
6	S 89° 23' 30" W	111.50			
7	S 89° 23' 30" W	111.50			
8	S 89° 23' 30" W	111.50			
9	S 89° 23' 30" W	111.50			
10	S 89° 23' 30" W	111.50			
11	S 89° 23' 30" W	111.50			
12	S 89° 23' 30" W	111.50			
13	S 89° 23' 30" W	111.50			
14	S 89° 23' 30" W	111.50			
15	S 89° 23' 30" W	111.50			
16	S 89° 23' 30" W	111.50			
17	S 89° 23' 30" W	111.50			
18	S 89° 23' 30" W	111.50			
19	S 89° 23' 30" W	111.50			
20	S 89° 23' 30" W	111.50			
21	S 89° 23' 30" W	111.50			
22	S 89° 23' 30" W	111.50			
23	S 89° 23' 30" W	111.50			
24	S 89° 23' 30" W	111.50			
25	S 89° 23' 30" W	111.50			
26	S 89° 23' 30" W	111.50			
27	S 89° 23' 30" W	111.50			
28	S 89° 23' 30" W	111.50			
29	S 89° 23' 30" W	111.50			
30	S 89° 23' 30" W	111.50			
31	S 89° 23' 30" W	111.50			
32	S 89° 23' 30" W	111.50			
33	S 89° 23' 30" W	111.50			
34	S 89° 23' 30" W	111.50			
35	S 89° 23' 30" W	111.50			
36	S 89° 23' 30" W	111.50			
37	S 89° 23' 30" W	111.50			
38	S 89° 23' 30" W	111.50			
39	S 89° 23' 30" W	111.50			
40	S 89° 23' 30" W	111.50			
41	S 89° 23' 30" W	111.50			
42	S 89° 23' 30" W	111.50			
43	S 89° 23' 30" W	111.50			
44	S 89° 23' 30" W	111.50			
45	S 89° 23' 30" W	111.50			
46	S 89° 23' 30" W	111.50			
47	S 89° 23' 30" W	111.50			
48	S 89° 23' 30" W	111.50			
49	S 89° 23' 30" W	111.50			
50	S 89° 23' 30" W	111.50			
51	S 89° 23' 30" W	111.50			
52	S 89° 23' 30" W	111.50			
53	S 89° 23' 30" W	111.50			
54	S 89° 23' 30" W	111.50			
55	S 89° 23' 30" W	111.50			
56	S 89° 23' 30" W	111.50			
57	S 89° 23' 30" W	111.50			
58	S 89° 23' 30" W	111.50			
59	S 89° 23' 30" W	111.50			
60	S 89° 23' 30" W	111.50			
61	S 89° 23' 30" W	111.50			
62	S 89° 23' 30" W	111.50			
63	S 89° 23' 30" W	111.50			
64	S 89° 23' 30" W	111.50			
65	S 89° 23' 30" W	111.50			
66	S 89° 23' 30" W	111.50			
67	S 89° 23' 30" W	111.50			
68	S 89° 23' 30" W	111.50			
69	S 89° 23' 30" W	111.50			
70	S 89° 23' 30" W	111.50			
71	S 89° 23' 30" W	111.50			
72	S 89° 23' 30" W	111.50			
73	S 89° 23' 30" W	111.50			
74	S 89° 23' 30" W	111.50			
75	S 89° 23' 30" W	111.50			