

DURANGO TRAILS TOWNHOMES UNIT 3

Recorded in Book 80 Page 78 of Plats

200 Scale Map Location: L-28-3

Fire Dept. District Map # 2317:21

MASTER SITE ADDRESS: 1332 N. DURANGO DR

BLOCK 1	LOT	1	1305	SILVER SIERRA ST	N/S	PRIVATE STREET
		2	1307			
		3	1309			
		4	1311			
		5	1313			
		6	1315			
		7	1317			
		8	1319			
		9	1325			
		10	1327			
		11	1329			
		12	1331			
		13	1333			
		14	1335			
		15	1337			
		16	1339			
		17	1343			
		18	1345			
		19	1347			
		20	1349			
		21	1351			
		22	1353			
		23	1355			
		24	1357			
BLOCK 1	LOT	25	1356	DUSTY CREEK ST	N/S	PRIVATE STREET
		26	1354			
		27	1352			
		28	1350			
		29	1348			
		30	1346			
		31	1344			
		32	1342			
		33	1338			
		34	1336			
		35	1334			
		36	1332			
		37	1330			
		38	1328			
		39	1326			
		40	1324			
		41	1314			
		42	1312			
		43	1310			
		44	1308			
		45	1306			
		46	1304			
		47	1302			
		48	1300			

DURANGO TRAILS TOWNHOMES UNIT 3

BLOCK 2	LOT	1	1300	SILVER SIERRA ST	N/S	PRIVATE STREET
		2	1302			
		3	1304			
		4	1306			
		5	1308			
		6	1310			
		7	1312			
		8	1314			
		9	1324			
		10	1326			
		11	1328			
		12	1330			
		13	1332			
		14	1334			
		15	1338			
		16	1340			
		17	1342			
		18	1344			
		19	1346			
		20	1348			
		21	1350			
		22	1352			

BLOCK 2	LOT	23	1353	DUSTY CREEK ST	N/S	PRIVATE STREET
		24	1351			
		25	1349			
		26	1347			
		27	1345			
		28	1343			
		29	1341			
		30	1339			
		31	1335			
		32	1333			
		33	1331			
		34	1329			
		35	1327			
		36	1325			
		37	1315			
		38	1313			
		39	1311			
		40	1309			
		41	1307			
		42	1305			
		43	1303			
		44	1301			

Common Area	A	8430	DURANGO DUNES AVE	E/W	PRIVATE STREET
Common Area	B	1318	SILVER SIERRA ST	N/S	PRIVATE STREET
Common Area	C	8411	DURANGO DUNES AVE	E/W	PRIVATE STREET

Streets with no addresses: CAMP OASIS AVENUE (N/S PRIVATE DRIVE)
and CARMEN BOULEVARD (E/W PUBLIC STREET)

ORIGINAL DATE: 7/29/1997

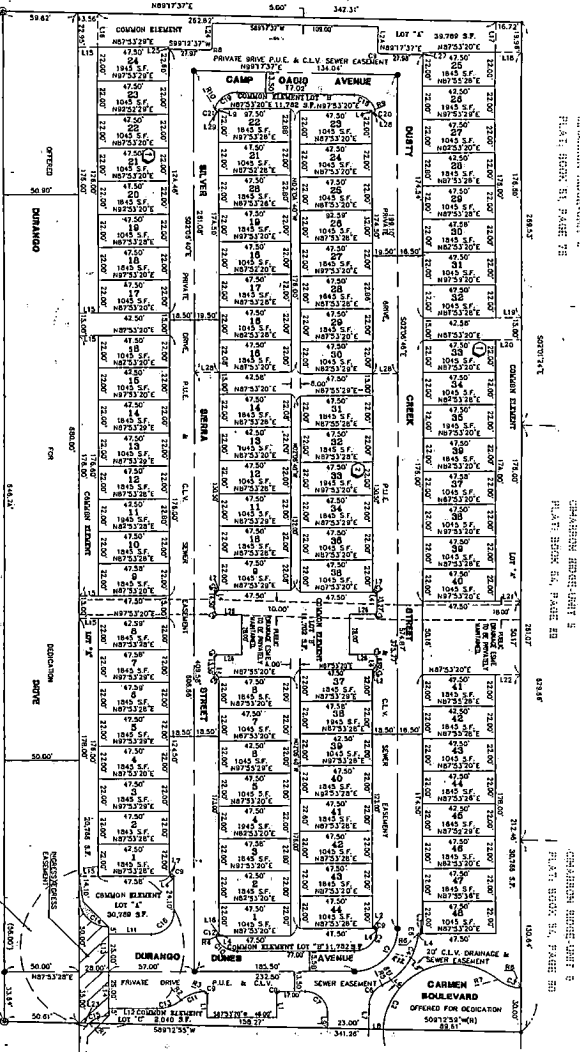
**CITY OF LAS VEGAS
PLANNING & DEVELOPMENT DEPARTMENT**


JOHN B HERBERT, PLANNER I

FILE COPY
DON'T REMOVE

DURANGO TRAILS TOWNHOMES - UNIT 3
 (A COMMON INTEREST COMMUNITY)
 THE WEST HALF (W 1/2) OF THE SOUTHWEST QUARTER (SW 1/4) OF THE NORTHWEST QUARTER (NW 1/4) OF THE NORTHWEST QUARTER (NW 1/4) OF SECTION 20 SOUTH, RANGE 60 EAST, M.D.M., CITY OF LAS VEGAS, CLARK COUNTY, NEVADA

APH 113-28-011-004
 UNREVEALED



CHADDERN HERRICK & ASSOCIATES
 PLAT BOOK 54, PAGE 78

CHADDERN HERRICK & ASSOCIATES
 PLAT BOOK 54, PAGE 83

CHADDERN HERRICK & ASSOCIATES
 PLAT BOOK 54, PAGE 88

DISTING DURANGO TRAILS-UNIT 3
 BK. 71, PG. 55

SCALE: 1" = 30'

LEGEND

- 18 LOT NUMBER / RESERVATION = 22
- 19 COMMON ELEMENTS / COMMON ELEMENTS = 23
- 20 BLOCK NUMBER
- 21 ROAD USE NUMBER
- 22 DRIVE EASEMENT
- 23 PLANNED UNIT DEVELOPMENT
- 24 SET THE S CORNER - AL. CUR. VON RL'S 1105'
- 25 SET THE S CORNER - AL. CUR. VON RL'S 1105'
- 26 SET THE S CORNER - AL. CUR. VON RL'S 1105'
- 27 PUBLIC UTILITY EASEMENT
- 28 DRIVE EASEMENT
- 29 PROPOSED DRIVE
- 30 "SOFT" VISIBILITY INTERSECTION
- 31 "HARD" VISIBILITY INTERSECTION
- 32 "SOFT" VISIBILITY INTERSECTION
- 33 "HARD" VISIBILITY INTERSECTION
- 34 "SOFT" VISIBILITY INTERSECTION
- 35 "HARD" VISIBILITY INTERSECTION

NOTES

- 1) THIS MAP OF COMMONS SHALL BE SET WITH A CORNER MARKED WITH AN IRON PIPE OR IRON ROD TO BE PLACED AT THE CORNER OF THE BLOCK OR CROSS ON THE PROVISIONS OF THE PROPERTY PLAN.
- 2) DRIVE VISIONARY ACCESS TO DURANGO DRIVE FROM ADJACENT LOTS IS PROHIBITED.
- 3) SEE SHEET 3 OF 4 FOR DRIVE TIE-IN, DATE AND MOUNT, LINK SHAPE.

DATE	BY	REVISION
11/11/11	CHADDERN HERRICK & ASSOCIATES	ISSUED FOR PERMITTING
11/11/11	CHADDERN HERRICK & ASSOCIATES	ISSUED FOR PERMITTING
11/11/11	CHADDERN HERRICK & ASSOCIATES	ISSUED FOR PERMITTING
11/11/11	CHADDERN HERRICK & ASSOCIATES	ISSUED FOR PERMITTING
11/11/11	CHADDERN HERRICK & ASSOCIATES	ISSUED FOR PERMITTING
11/11/11	CHADDERN HERRICK & ASSOCIATES	ISSUED FOR PERMITTING
11/11/11	CHADDERN HERRICK & ASSOCIATES	ISSUED FOR PERMITTING
11/11/11	CHADDERN HERRICK & ASSOCIATES	ISSUED FOR PERMITTING
11/11/11	CHADDERN HERRICK & ASSOCIATES	ISSUED FOR PERMITTING
11/11/11	CHADDERN HERRICK & ASSOCIATES	ISSUED FOR PERMITTING