

# ASPEN MEADOWS – Unit One

Recorded in Book 96 Page 05 of Plats

200 Scale Map Location: K-35-4

Fire Dept. District Map # 2413:38; 48

MASTER SITE ADDRESS: 11023 ALTA DR

BLOCK 1	LOT	1	11040	LINDEN LEAF AVE	E/W	PRIVATE STREET
		2	11036			
		3	11032			
		4	11028			
		5	11024			
		6	11020			
		7	11016			
		8	11012			
		9	11008			
		10	11004			
BLOCK 1	LOT	11	519	POPLAR LEAF ST	N/S	PRIVATE STREET
		12	515			
		13	511			
		14	510			
		15	514			
		16	518			
		17	522			
BLOCK 2	LOT	43	11037	MEADOW LEAF AVE	E/W	PRIVATE STREET
		44	11041			
		45	11045			
		46	11049			
		47	11053			
		48	11057			
BLOCK 2	LOT	49	575	ASPEN LEAF ST	N/S	PRIVATE STREET
		50	573			
		51	569			
		52	565			
		53	561			
		54	557			
		55	553			
		56	549			
		57	545			
		58	541			
		59	537			
		60	533			
		61	529			
		62	525			
		63	521			
BLOCK 3	LOT	64	528	ASPEN LEAF ST	N/S	PRIVATE STREET
		65	532			
		66	536			
		67	540			
		68	544			
		69	548			
		70	552			

## ASPEN MEADOWS - Unit One

BLOCK 3	LOT	71	556	ASPEN LEAF ST	N/S	PRIVATE STREET
		72	560			
		73	564			
		74	568			
		75	572			
		76	576			
BLOCK 3	LOT	106	11009	LINDEN LEAF AVE	E/W	PRIVATE STREET
		107	11013			
		108	11017			
		109	11021			
		110	11025			
		111	11029			
		112	11033			
		113	11037			
Common Area	A	511	ASPEN LEAF ST	N/S	PRIVATE STREET	
	B	506				
	C	514				
	D	510				
Common Area	E	506	POPLAR LEAF ST	N/S	PRIVATE STREET	
Common Area	F	524	ASPEN LEAF ST	N/S	PRIVATE STREET	
Common Area	G	11030	PALO BREA DR	E/W	PRIVATE STREET	

ORIGINAL DATE: 8/23/2000

CITY OF LAS VEGAS  
PLANNING & DEVELOPMENT DEPARTMENT



DAVID BRATCHER, PLANNER II

# ASPEN MEADOWS – Unit One

Recorded in Book 96 Page 05 of Plats

200 Scale Map Location: K-35-4

Fire Dept. District Map # 2413:38; 48

MASTER SITE ADDRESS: 11023 ALTA DR

BLOCK 1	LOT	1	11040	LINDEN LEAF AVE	E/W	PRIVATE STREET
		2	11036			
		3	11032			
		4	11028			
		5	11024			
		6	11020			
		7	11016			
		8	11012			
		9	11008			
		10	11004			
BLOCK 1	LOT	11	519	POPLAR LEAF ST	N/S	PRIVATE STREET
		12	515			
		13	511			
		14	510			
		15	514			
		16	518			
		17	522			
BLOCK 2	LOT	43	11037	MEADOW LEAF AVE	E/W	PRIVATE STREET
		44	11041			
		45	11045			
		46	11049			
		47	11053			
		48	11057			
BLOCK 2	LOT	49	575	ASPEN LEAF ST	N/S	PRIVATE STREET
		50	573			
		51	569			
		52	565			
		53	561			
		54	557			
		55	553			
		56	549			
		57	545			
		58	541			
		59	537			
		60	533			
		61	529			
62	525					
63	521					
BLOCK 3	LOT	64	528	ASPEN LEAF ST	N/S	PRIVATE STREET
		65	532			
		66	536			
		67	540			
		68	544			
		69	548			
		70	552			

## ASPEN MEADOWS - Unit One

BLOCK 3	LOT	71	556	ASPEN LEAF ST	N/S	PRIVATE STREET
		72	560			
		73	564			
		74	568			
		75	572			
		76	576			
BLOCK 3	LOT	106	11009	LINDEN LEAF AVE	EW	PRIVATE STREET
		107	11013			
		108	11017			
		109	11021			
		110	11025			
		111	11029			
		112	11033			
		113	11037			
Common Area	A	511	ASPEN LEAF ST	N/S	PRIVATE STREET	
	B	506				
	C	514				
	D	510				
Common Area	E	506	POPLAR LEAF ST	N/S	PRIVATE STREET	
Common Area	F	524	ASPEN LEAF ST	N/S	PRIVATE STREET	
Common Area	G	11030	PALO BREA DR	EW	PRIVATE STREET	

ORIGINAL DATE: 8/23/2000

CITY OF LAS VEGAS  
PLANNING & DEVELOPMENT DEPARTMENT



DAVID BRATCHER, PLANNER II

# ASPEN MEADOWS – Unit One

Recorded in Book 96 Page 05 of Plats

200 Scale Map Location: K-35-4

Fire Dept. District Map # 2413:38; 48

MASTER SITE ADDRESS: 11023 ALTA DR

BLOCK 1	LOT	1	11040	LINDEN LEAF AVE	E/W	PRIVATE STREET
		2	11036			
		3	11032			
		4	11028			
		5	11024			
		6	11020			
		7	11016			
		8	11012			
		9	11008			
		10	11004			
BLOCK 1	LOT	11	519	POPLAR LEAF ST	N/S	PRIVATE STREET
		12	515			
		13	511			
		14	510			
		15	514			
		16	518			
		17	522			
BLOCK 2	LOT	43	11037	MEADOW LEAF AVE	E/W	PRIVATE STREET
		44	11041			
		45	11045			
		46	11049			
		47	11053			
		48	11057			
BLOCK 2	LOT	49	575	ASPEN LEAF ST	N/S	PRIVATE STREET
		50	573			
		51	569			
		52	565			
		53	561			
		54	557			
		55	553			
		56	549			
		57	545			
		58	541			
		59	537			
		60	533			
		61	529			
		62	525			
63	521					
BLOCK 3	LOT	64	528	ASPEN LEAF ST	N/S	PRIVATE STREET
		65	532			
		66	536			
		67	540			
		68	544			
		69	548			
		70	552			

## ASPEN MEADOWS - Unit One

BLOCK 3	LOT	71	556	ASPEN LEAF ST	N/S	PRIVATE STREET
		72	560			
		73	564			
		74	568			
		75	572			
		76	576			
BLOCK 3	LOT	106	11009	LINDEN LEAF AVE	E/W	PRIVATE STREET
		107	11013			
		108	11017			
		109	11021			
		110	11025			
		111	11029			
		112	11033			
		113	11037			
Common Area	A	511		ASPEN LEAF ST	N/S	PRIVATE STREET
	B	506				
	C	514				
	D	510				
Common Area	E	506		POPLAR LEAF ST	N/S	PRIVATE STREET
Common Area	F	524		ASPEN LEAF ST	N/S	PRIVATE STREET
Common Area	G	11030		PALO BREA DR	E/W	PRIVATE STREET

ORIGINAL DATE: 8/23/2000

CITY OF LAS VEGAS  
PLANNING & DEVELOPMENT DEPARTMENT

  
DAVID BRATCHER, PLANNER II

File Copy

01575

20000823

FINAL MAP OF  
**ASPEN MEADOWS -- Unit One**  
 A PORTION OF LOT 71 OF BLOCK 'A' OF BOOK 80 OF PLATS  
 PAGE 14, LYING WITHIN THE SOUTH HALF OF THE NORTHEAST QUARTER  
 OF 1/4 OF SECTION 15, TOWNSHIP 22 SOUTH, RANGE 23 EAST, MERIDIAN  
 CITY OF LAS VEGAS, CLARK COUNTY, NEVADA.

TOTAL AREA: 7.17 Acres  
 TOTAL LOTS: 59

**NOTES**

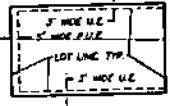
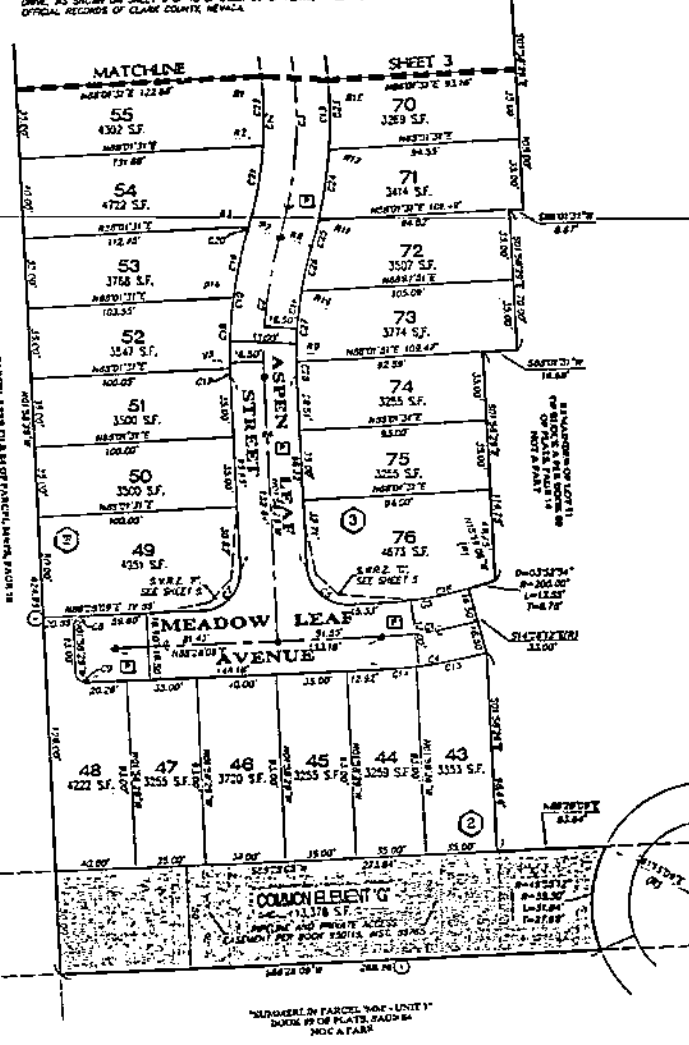
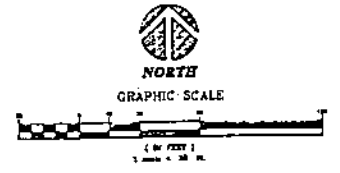
1. ALL COMMON ELEMENTS DEPICTED ON THIS FINAL MAP SHALL BE PILES AND PRIVATE LANDSCAPE EASEMENTS TO BE MAINTAINED BY THE HOMEOWNERS' ASSOCIATION.
2. DIRECT VEHICULAR ACCESS TO ALTA DRIVE THROUGH COMMON AREA FROM ADJUTING LOTS IS PROHIBITED.
3. ALL FRONT MOBILITY RESTRICTION ZONES (EXCEPT 2'S) SHALL BE PRIVATELY MAINTAINED AND SURVEYMENTS SHALL BE THIRTY INCHES (30") IN HEIGHT AND ALLOWED TO BE CONSTRUCTED WITHIN SAID ZONES.
4. ALL REAR LOT CORNERS SHALL BE SET WITH 8 NAIL AND TAG MARKED "PLS 1173" ADJOINING PUBLIC STREETS OR PRIVATE DRIVE SHALL BE MARKED BY THE CHANGING OF THE BACK OF CURB AT THE PROLONGATION OF THE PROPERTY LINES.

**BASIS OF BEARINGS**

SOUTH 74°40'00" EAST BEING THE BEARING OF THE CENTERLINE OF ALTA DRIVE, AS SHOWN ON SHEET 8 OF 13 OF BOOK 80 OF PLATS, PAGE 14, OFFICIAL RECORDS OF CLARK COUNTY, NEVADA.

**LEGEND**

- MONUMENT FOUND, AS NOTED
- ⊗ SET 3/8" REBAR AND ALUMINUM CAP, MARKED "PLS 1173", WITH REFERENCE TAG
- △ SET 3/8" REBAR AND ALUMINUM CAP, MARKED "PLS 1173"
- 50 LOT NUMBER, TYPICAL
- ALPA ASSESSOR'S PARCEL NUMBER
- (C) CALCULATED
- (M) MEASURED
- (R) RADIAL BEARING, TYPICAL
- S.F. SQUARE FEET
- FILE PUBLIC UTILITY EASEMENT
- UPR TYPICAL
- U.E. UTILITY EASEMENT
- (P) PRIVATE DRIVE, P.U.F., CITY OF LAS VEGAS SENIOR EASEMENT & PUBLIC GRASSLAND EASEMENT (TO BE PRIVATELY MAINTAINED)
- (L) BLOCK NUMBER, TYPICAL
- (C) CURVE IDENTIFICATION, TYPICAL
- (L) LINE IDENTIFICATION, TYPICAL
- STREET CENTERLINE, TYPICAL
- EASEMENT LINE, TYPICAL
- (1) MAP REFERENCE, TYPICAL
- LOT LINE, TYPICAL
- MOBILITY RESTRICTION ZONE (EXCEPT 2'S) (TO BE PRIVATELY MAINTAINED)
- SUBMERGED BOUNDARY LINE



TYPICAL PILES and UEs  
 NOT TO SCALE

**MAP REFERENCES**

- ① BOOK 80 OF PLATS, PAGE 14
- ② FILE 23 OF PARCEL MAPS, PAGE 76
- ③ FILE 84 OF PARCEL MAPS, PAGE 70
- ④ BOOK 70 OF PLATS, PAGE 75
- ⑤ BOOK 80 OF PLATS, PAGE 84

**NUMBERED CURVES**

CURVE	RADIUS	LENGTH	TANGENT	AREA
C1	218.50	49.27	24.00	12,242.11
C2	210.20	36.74	21.10	9,252.50
C3	210.20	41.21	20.20	12,242.11
C4	220.00	45.25	22.80	12,242.11
C5	20.00	31.24	15.10	8,252.50
C6	40.00	31.45	15.10	8,252.50
C7	5.00	2.85	1.50	9,252.50
C8	9.00	7.24	3.20	22,000.00
C9	22.00	22.71	14.20	18,252.50
C10	184.00	8.10	11.80	18,252.50
C11	194.00	8.20	11.80	22,000.00
C12	22.00	22.71	14.20	22,000.00
C13	22.00	22.71	14.20	22,000.00
C14	22.00	22.71	14.20	22,000.00
C15	22.00	22.71	14.20	22,000.00
C16	22.00	22.71	14.20	22,000.00
C17	22.00	22.71	14.20	22,000.00
C18	22.00	22.71	14.20	22,000.00
C19	22.00	22.71	14.20	22,000.00
C20	22.00	22.71	14.20	22,000.00
C21	22.00	22.71	14.20	22,000.00
C22	22.00	22.71	14.20	22,000.00
C23	22.00	22.71	14.20	22,000.00
C24	22.00	22.71	14.20	22,000.00
C25	22.00	22.71	14.20	22,000.00
C26	22.00	22.71	14.20	22,000.00
C27	22.00	22.71	14.20	22,000.00
C28	22.00	22.71	14.20	22,000.00
C29	22.00	22.71	14.20	22,000.00
C30	22.00	22.71	14.20	22,000.00

**NUMBERED RADIAL LINES**

LINE	BEARING
R1	N87°24'28" E
R2	N87°24'28" E
R3	S73°01'23" W
R4	N87°24'28" E
R5	N87°24'28" E
R6	S89°58'27" W
R7	S72°50'39" W
R8	S72°50'39" W
R9	S79°58'27" W
R10	N79°17'06" W
R11	S74°13'21" W
R12	S83°18'24" W
R13	N85°22'32" W

**COMMON ELEMENT TABLE**

COMMON ELEMENT "A"	71,876 S.F.
COMMON ELEMENT "B"	400 S.F.
COMMON ELEMENT "C"	139 S.F.
COMMON ELEMENT "D"	1,802 S.F.
COMMON ELEMENT "E"	481 S.F.
COMMON ELEMENT "F"	1,486 S.F.
COMMON ELEMENT "G"	7,230 S.F.
<b>TOTAL COMMON AREA</b>	<b>79,505 S.F.</b>

**CVL CONSULTANTS, INC.**  
 1280 S. Valley View Blvd., Suite 200, Las Vegas, NV 89102  
 Tel: 702.266.9999 Fax: 702.266.9999  
 Owner: 2/2000  
 Drawn by: PM/DMG  
 Checked by: C. Case  
 Job Number: 89-8083-1-1  
 Date: 4 of 8

Book 96 of Plat 05