

# GLENMERE NO 2 BY LEWIS HOMES

Recorded in Book 82 Page 1 of Plats

200 Scale Map Location: K-36-3

Fire Dept. District Map # 2414:42,43,51,52

MASTER SITE ADDRESS: 10711 ALTA DR

BLOCK A	LOT	3	601	BIANCA BAY ST	N/S	PUBLIC STREET
		4	605			
		5	609			
		6	613			
		7	617			
		8	621			
		9	625			
		10	629			
BLOCK A	LOT	48	632	JOE WILLIS ST	N/S	PUBLIC STREET
		49	628			
		50	624			
		51	620			
		52	616			
		53	612			
		54	608			
		55	604			
		56	600			
		57	520			
		58	516			
		59	512			
		60	508			
		61	504			
		62	500			
BLOCK B	LOT	63	10700	NEW BORO AVE	E/W	PUBLIC STREET
		64	10704			
		65	10708			
		66	10712			
		67	10716			
		68	10720			
		69	10724			
		70	10728			
		71	10732			
		72	10736			
		73	10740			
		74	10744			
		75	10748			
		76	10752			
		77	10756			
		78	10760			
BLOCK B	LOT	79	501	BIANCA BAY ST	N/S	PUBLIC STREET
		80	505			
		81	509			
BLOCK C	LOT	85	10753	NEW BORO AVE	E/W	PUBLIC STREET
		86	10749			
		87	10745			

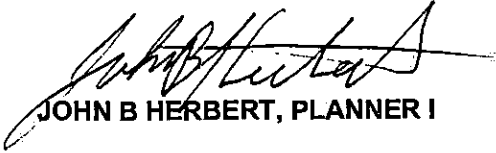
# GLENMERE NO 2 BY LEWIS HOMES

BLOCK C	LOT	88	10741	NEW BORO AVE	E/W	PUBLIC STREET
		89	10737			
		90	10733			
		91	10729			
		92	10725			
		93	10721			
		94	10717			
		95	10713			
		96	10709			
		97	10705			
98	10701					
BLOCK C	LOT	99	10700	SPRUCEDALE AVE	E/W	PUBLIC STREET
		100	10708			
		101	10712			
		102	10716			
		103	10720			
		104	10724			
BLOCK D	LOT	118	10725	SPRUCEDALE AVE	E/W	PUBLIC STREET
		119	10721			
		120	10717			
		121	10713			
		122	10709			
		123	10705			
		124	10701			
BLOCK D	LOT	125	10700	BALSAM CREEK AVE	E/W	PUBLIC STREET
		126	10708			
		127	10712			
		128	10716			
		129	10720			
		130	10724			
		131	10728			
		132	10732			
		133	10736			
		134	10740			
		135	10744			
		136	10748			
		137	10752			
BLOCK E	LOT	161	10709	BALSAM CREEK AVE	E/W	PUBLIC STREET
		162	10705			
		163	10701			
BLOCK E	LOT	183	628	BIANCA BAY ST	N/S	PUBLIC STREET
		184	624			
		185	620			
		186	616			
		187	612			
		188	608			
		189	604			
		190	600			
Common Area	GG	503	JOE WILLIS ST	N/S	PUBLIC STREET	
Common Area	M	610	S PAVILION CENTER DR	N/S	PUBLIC STREET	

**GLENMERE NO 2 BY LEWIS HOMES**

ORIGINAL DATE: 11/12/1997

**CITY OF LAS VEGAS  
PLANNING & DEVELOPMENT DEPARTMENT**



**JOHN B HERBERT, PLANNER I**

TRACT SEQUENCE & PRODUCTION RELEASE SCHEDULE

Property Owner: Lewis Homes of Nevada  
 General Contractor: Lewis Homes of Nevada  
 Legal Description: Glenmere No. 2, Phase 1  
 Production Phase No: 1  
 Marketing Name: Glenmere  
 Total No. of Lots: 8  
 Start Date: 02/09/98  
 Super: Byron Nezat

<u>Lot/Block</u>	<u>Plan No.</u>	<u>Street Address</u>
104/C	519-AR	10724 Sprucedale Avenue
103/C	516-B	10720 Sprucedale Avenue
102/C	519-CR	10716 Sprucedale Avenue
101/C	516-A	10712 Sprucedale Avenue
118/D	511-ALT-A	10725 Sprucedale Avenue
119/D	511-B	10721 Sprucedale Avenue
120/D	523-A	10717 Sprucedale Avenue
121/D	516-CR	10713 Sprucedale Avenue

ALT designation indicates that Plan 511 is to be built with Bedroom 5 in lieu of garage space.

- \* - principal window treatment required on side
- # - principal window treatment required on rear

Y:\SEQUENCE\GM2-1:smw:11/3/97; 11/14/97:changed start date;  
 12/05/97:changed start date;12/24/97:changed start date

# GLENMERE NO. 2 - BY LEWIS HOMES

## A COMMON INTEREST COMMUNITY

A PORTION OF LOT 5, OF THE "ARBORS AT SUMNER VILLAGE T1/2Z URT NO. 2"  
AS SHOWN BY A MAP ON FILE AS BOOK NO. 14 OF PLAT URT NO. 20,  
TOWNSHIP 20 SOUTH, RANGE 4 EAST, COUNTY OF CLARK, STATE OF NEVADA,  
CITY OF LAS VEGAS.

**LEGEND**

- BOOK NUMBER
- LOT NUMBER
- CURVE NUMBER
- TRACT BOUNDARY
- UTILITY EASEMENT
- FEASIBILITY AS SHOWN
- SET TYPE IS MONUMENTS
- 5,000 SF LOT AREA

TOTAL NUMBER OF LOTS = 43

NOT BEING SUBMITTED TO ADEQUATE  
SURVEYING TO BE PRIMARILY  
BASED ON THE FOLLOWING DATA:

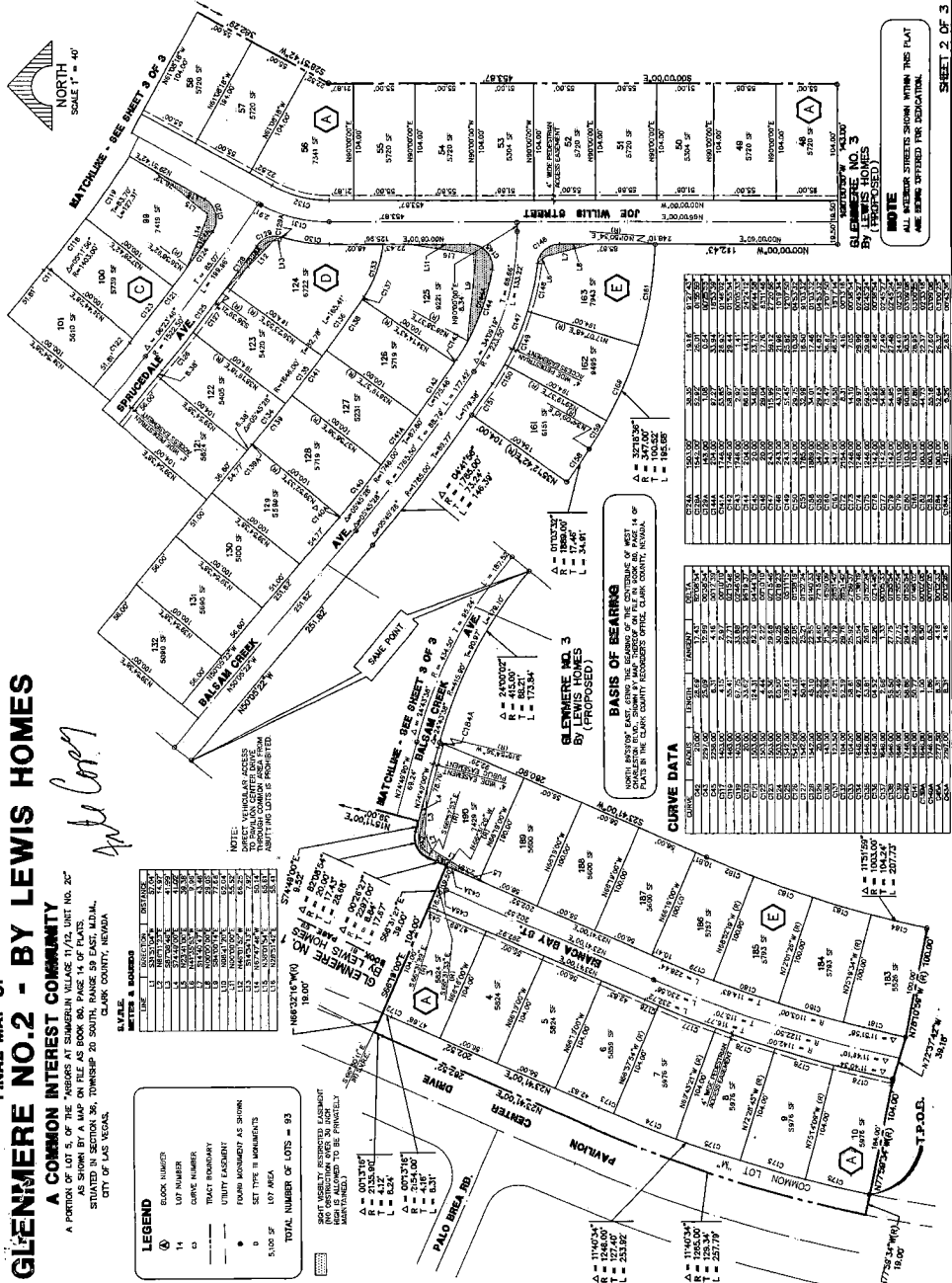
- 1. 007315'
- 2. 2123.94'
- 3. 007315'
- 4. 2123.94'
- 5. 007315'
- 6. 2123.94'

**NOTE:** DIRECT VEHICULAR ACCESS THROUGH COMMON AREA THROUGH CURVED DRIVE IS PROHIBITED.

TRACT	AREA	PERCENT
1	11,902.34	27.67%
2	11,902.34	27.67%
3	11,902.34	27.67%
4	11,902.34	27.67%
5	11,902.34	27.67%
6	11,902.34	27.67%
7	11,902.34	27.67%
8	11,902.34	27.67%
9	11,902.34	27.67%
10	11,902.34	27.67%
11	11,902.34	27.67%
12	11,902.34	27.67%
13	11,902.34	27.67%
14	11,902.34	27.67%
15	11,902.34	27.67%
16	11,902.34	27.67%
17	11,902.34	27.67%
18	11,902.34	27.67%
19	11,902.34	27.67%
20	11,902.34	27.67%
21	11,902.34	27.67%
22	11,902.34	27.67%
23	11,902.34	27.67%
24	11,902.34	27.67%
25	11,902.34	27.67%
26	11,902.34	27.67%
27	11,902.34	27.67%
28	11,902.34	27.67%
29	11,902.34	27.67%
30	11,902.34	27.67%
31	11,902.34	27.67%
32	11,902.34	27.67%
33	11,902.34	27.67%
34	11,902.34	27.67%
35	11,902.34	27.67%
36	11,902.34	27.67%
37	11,902.34	27.67%
38	11,902.34	27.67%
39	11,902.34	27.67%
40	11,902.34	27.67%
41	11,902.34	27.67%
42	11,902.34	27.67%
43	11,902.34	27.67%

**TABLE A**

TRACT	AREA	PERCENT
1	11,902.34	27.67%
2	11,902.34	27.67%
3	11,902.34	27.67%
4	11,902.34	27.67%
5	11,902.34	27.67%
6	11,902.34	27.67%
7	11,902.34	27.67%
8	11,902.34	27.67%
9	11,902.34	27.67%
10	11,902.34	27.67%
11	11,902.34	27.67%
12	11,902.34	27.67%
13	11,902.34	27.67%
14	11,902.34	27.67%
15	11,902.34	27.67%
16	11,902.34	27.67%
17	11,902.34	27.67%
18	11,902.34	27.67%
19	11,902.34	27.67%
20	11,902.34	27.67%
21	11,902.34	27.67%
22	11,902.34	27.67%
23	11,902.34	27.67%
24	11,902.34	27.67%
25	11,902.34	27.67%
26	11,902.34	27.67%
27	11,902.34	27.67%
28	11,902.34	27.67%
29	11,902.34	27.67%
30	11,902.34	27.67%
31	11,902.34	27.67%
32	11,902.34	27.67%
33	11,902.34	27.67%
34	11,902.34	27.67%
35	11,902.34	27.67%
36	11,902.34	27.67%
37	11,902.34	27.67%
38	11,902.34	27.67%
39	11,902.34	27.67%
40	11,902.34	27.67%
41	11,902.34	27.67%
42	11,902.34	27.67%
43	11,902.34	27.67%



**GLENMERE NO. 3  
BY LEWIS HOMES  
(PROPOSED)**

**NOTE:** NORTH INTERSECT HAS ADDED THE BEARINGS OF THE EXTENT OF WEST QUARTER SECTION 36, TOWNSHIP 20 SOUTH, RANGE 4 EAST, COUNTY OF CLARK, STATE OF NEVADA, TO THIS PLAT. THESE BEARINGS WILL BE USED TO CORRECT THE PLAT.

**TABLE B**

**BASES OF BEARINGS**

- A = 11902.34'
- B = 11902.34'
- C = 11902.34'
- D = 11902.34'
- E = 11902.34'
- F = 11902.34'
- G = 11902.34'
- H = 11902.34'
- I = 11902.34'
- J = 11902.34'
- K = 11902.34'
- L = 11902.34'
- M = 11902.34'
- N = 11902.34'
- O = 11902.34'
- P = 11902.34'
- Q = 11902.34'
- R = 11902.34'
- S = 11902.34'
- T = 11902.34'
- U = 11902.34'
- V = 11902.34'
- W = 11902.34'
- X = 11902.34'
- Y = 11902.34'
- Z = 11902.34'

**TABLE C**

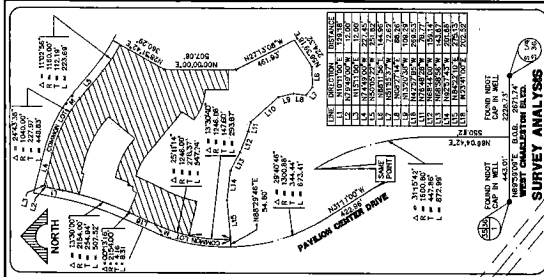
**CURVE DATA**

TRACT	AREA	PERCENT
1	11,902.34	27.67%
2	11,902.34	27.67%
3	11,902.34	27.67%
4	11,902.34	27.67%
5	11,902.34	27.67%
6	11,902.34	27.67%
7	11,902.34	27.67%
8	11,902.34	27.67%
9	11,902.34	27.67%
10	11,902.34	27.67%
11	11,902.34	27.67%
12	11,902.34	27.67%
13	11,902.34	27.67%
14	11,902.34	27.67%
15	11,902.34	27.67%
16	11,902.34	27.67%
17	11,902.34	27.67%
18	11,902.34	27.67%
19	11,902.34	27.67%
20	11,902.34	27.67%
21	11,902.34	27.67%
22	11,902.34	27.67%
23	11,902.34	27.67%
24	11,902.34	27.67%
25	11,902.34	27.67%
26	11,902.34	27.67%
27	11,902.34	27.67%
28	11,902.34	27.67%
29	11,902.34	27.67%
30	11,902.34	27.67%
31	11,902.34	27.67%
32	11,902.34	27.67%
33	11,902.34	27.67%
34	11,902.34	27.67%
35	11,902.34	27.67%
36	11,902.34	27.67%
37	11,902.34	27.67%
38	11,902.34	27.67%
39	11,902.34	27.67%
40	11,902.34	27.67%
41	11,902.34	27.67%
42	11,902.34	27.67%
43	11,902.34	27.67%

**NOTE**  
ALL INTERIOR STREETS SHOWN WITH THIS PLAT  
ARE BEING OFFERED FOR DEDICATION.

# FINAL MAP OF GLENMERE NO.2 - BY LEWIS HOMES A COMMON INTEREST COMMUNITY

A PORTION OF LOT 5, OF THE ARBORES AT SUMMERBURN VILLAGE 17/2, UNIT No. 207  
SITING IN SECTION 36, TOWNSHIP 20 SOUTH, RANGE 19 EAST, ALAM.  
CLARK COUNTY, NEVADA,  
CITY OF LAS VEGAS,



**LEGEND**

BLOCK NUMBER  
LOT NUMBER  
TRACT BOUNDARY  
UTILITY EASEMENT  
FOUND MONUMENT AS SHOWN  
SET TYPE IS MONUMENTS  
LOT AREA  
TOTAL NUMBER OF LOTS = 93

**BASIS OF BEARING**

MIDDLE POINT OF WEST QUARTER SECTION 36, TOWNSHIP 20 SOUTH, RANGE 19 EAST, ALAM. CLARK COUNTY, NEVADA, IS THE BASIS OF BEARING FOR THIS MAP.

NOTE: VISIBLY RESTRICTED EASEMENT (NO RESTRICTION AS TO WORK) HAS BEEN SHOWN FOR THE PROPERTY INDICATED.

**SCALE 1" = 40'**

**CURVE DATA**

LINE	BEARING	DISTANCE
1	N 113°00'00" W	113.00
2	S 87°00'00" W	113.00
3	S 87°00'00" W	113.00
4	N 113°00'00" E	113.00
5	N 113°00'00" E	113.00
6	S 87°00'00" W	113.00
7	S 87°00'00" W	113.00
8	N 113°00'00" E	113.00
9	N 113°00'00" E	113.00
10	S 87°00'00" W	113.00
11	S 87°00'00" W	113.00
12	N 113°00'00" E	113.00
13	N 113°00'00" E	113.00
14	S 87°00'00" W	113.00
15	S 87°00'00" W	113.00
16	N 113°00'00" E	113.00
17	N 113°00'00" E	113.00
18	S 87°00'00" W	113.00
19	S 87°00'00" W	113.00
20	N 113°00'00" E	113.00
21	N 113°00'00" E	113.00
22	S 87°00'00" W	113.00
23	S 87°00'00" W	113.00
24	N 113°00'00" E	113.00
25	N 113°00'00" E	113.00
26	S 87°00'00" W	113.00
27	S 87°00'00" W	113.00
28	N 113°00'00" E	113.00
29	N 113°00'00" E	113.00
30	S 87°00'00" W	113.00
31	S 87°00'00" W	113.00
32	N 113°00'00" E	113.00
33	N 113°00'00" E	113.00
34	S 87°00'00" W	113.00
35	S 87°00'00" W	113.00
36	N 113°00'00" E	113.00
37	N 113°00'00" E	113.00
38	S 87°00'00" W	113.00
39	S 87°00'00" W	113.00
40	N 113°00'00" E	113.00
41	N 113°00'00" E	113.00
42	S 87°00'00" W	113.00
43	S 87°00'00" W	113.00
44	N 113°00'00" E	113.00
45	N 113°00'00" E	113.00
46	S 87°00'00" W	113.00
47	S 87°00'00" W	113.00
48	N 113°00'00" E	113.00
49	N 113°00'00" E	113.00
50	S 87°00'00" W	113.00
51	S 87°00'00" W	113.00
52	N 113°00'00" E	113.00
53	N 113°00'00" E	113.00
54	S 87°00'00" W	113.00
55	S 87°00'00" W	113.00
56	N 113°00'00" E	113.00
57	N 113°00'00" E	113.00
58	S 87°00'00" W	113.00
59	S 87°00'00" W	113.00
60	N 113°00'00" E	113.00
61	N 113°00'00" E	113.00
62	S 87°00'00" W	113.00
63	S 87°00'00" W	113.00
64	N 113°00'00" E	113.00
65	N 113°00'00" E	113.00
66	S 87°00'00" W	113.00
67	S 87°00'00" W	113.00
68	N 113°00'00" E	113.00
69	N 113°00'00" E	113.00
70	S 87°00'00" W	113.00
71	S 87°00'00" W	113.00
72	N 113°00'00" E	113.00
73	N 113°00'00" E	113.00
74	S 87°00'00" W	113.00
75	S 87°00'00" W	113.00
76	N 113°00'00" E	113.00
77	N 113°00'00" E	113.00
78	S 87°00'00" W	113.00
79	S 87°00'00" W	113.00
80	N 113°00'00" E	113.00
81	N 113°00'00" E	113.00
82	S 87°00'00" W	113.00
83	S 87°00'00" W	113.00
84	N 113°00'00" E	113.00
85	N 113°00'00" E	113.00
86	S 87°00'00" W	113.00
87	S 87°00'00" W	113.00
88	N 113°00'00" E	113.00
89	N 113°00'00" E	113.00
90	S 87°00'00" W	113.00
91	S 87°00'00" W	113.00
92	N 113°00'00" E	113.00
93	N 113°00'00" E	113.00
94	S 87°00'00" W	113.00
95	S 87°00'00" W	113.00
96	N 113°00'00" E	113.00
97</		