

MONUMENT @ LONE MOUNTAIN - UNIT 7

Recorded in Book 107 Page 74 of Plats

200 Scale Map Location: K-1-3

Fire Dept. District Map # 1814:32

MASTER SITE ADDRESS: 10710 STANGE AVE

BLOCK 1	LOT	299	10654	MORNING HARBOR AVE	E/W	PRIVATE STREET
		300	10658			
		301	10662			
		302	10700			
		303	10704			
		304	10708			
BLOCK 1	LOT	305	4524	ORANGE HEIGHTS ST	N/S	PRIVATE STREET
		306	4528			
		307	4532			
		308	4531			
		309	4529			
		310	4525			
		311	4521			
		312	4517			
		313	4513			
		314	4509			
		315	4505			
		316	4501			
BLOCK 1	LOT	317	10717	CLIFF MOUNTAIN AVE	E/W	PRIVATE STREET
		318	10713			
		319	10709			
		320	10705			
		321	10701			
BLOCK 2	LOT	323	10654	CLIFF MOUNTAIN AVE	E/W	PRIVATE STREET
		324	10658			
		325	10662			
		326	10700			
		327	10704			
		328	10708			
BLOCK 2	LOT	329	10709	MORNING HARBOR AVE	E/W	PRIVATE STREET
		330	10705			
		331	10701			
		332	10663			
		333	10659			
		334	10655			
BLOCK 3	LOT	369	10653	CLIFF MOUNTAIN AVE	E/W	PRIVATE STREET
		370	10657			
Common Area		7A	10680	STANGE AVE	E/W	PUBLIC STREET
		7B	10720			

No addresses for MOXLEY CREEK STREET (N/S Private Street).

ORIGINAL DATE: 11/20/2002

CITY OF LAS VEGAS
PLANNING & DEVELOPMENT DEPARTMENT



CHRIS DINGELL, PLANNER II

MONUMENT @ LONE MOUNTAIN - UNIT 7

Recorded in Book 107 Page 74 of Plats

200 Scale Map Location: K-1-3

Fire Dept. District Map # 1814:32

MASTER SITE ADDRESS: 10710 STANGE AVE

BLOCK 1	LOT	299	10654	MORNING HARBOR AVE	E/W	PRIVATE STREET
		300	10658			
		301	10662			
		302	10700			
		303	10704			
		304	10708			
BLOCK 1	LOT	305	4524	ORANGE HEIGHTS ST	N/S	PRIVATE STREET
		306	4528			
		307	4532			
		308	4531			
		309	4529			
		310	4525			
		311	4521			
		312	4517			
		313	4513			
		314	4509			
		315	4505			
		316	4501			
BLOCK 1	LOT	317	10717	CLIFF MOUNTAIN AVE	E/W	PRIVATE STREET
		318	10713			
		319	10709			
		320	10705			
		321	10701			
BLOCK 2	LOT	323	10654	CLIFF MOUNTAIN AVE	E/W	PRIVATE STREET
		324	10658			
		325	10662			
		326	10700			
		327	10704			
		328	10708			
BLOCK 2	LOT	329	10709	MORNING HARBOR AVE	E/W	PRIVATE STREET
		330	10705			
		331	10701			
		332	10663			
		333	10659			
		334	10655			
BLOCK 3	LOT	369	10653	CLIFF MOUNTAIN AVE	E/W	PRIVATE STREET
		370	10657			
Common Area		7A	10680	STANGE AVE	E/W	PUBLIC STREET
		7B	10720			

No addresses for MOXLEY CREEK STREET (N/S Private Street).

ORIGINAL DATE: 11/20/2002

CITY OF LAS VEGAS
PLANNING & DEVELOPMENT DEPARTMENT



CHRIS DINGELL, PLANNER II

MONUMENT @ LONE MOUNTAIN - UNIT 7

Recorded in Book 107 Page 74 of Plats

200 Scale Map Location: K-1-3

Fire Dept. District Map # 1814:32

MASTER SITE ADDRESS: 10710 STANGE AVE

BLOCK 1	LOT	299	10654	MORNING HARBOR AVE	E/W	PRIVATE STREET
		300	10658			
		301	10662			
		302	10700			
		303	10704			
		304	10708			
BLOCK 1	LOT	305	4524	ORANGE HEIGHTS ST	N/S	PRIVATE STREET
		306	4528			
		307	4532			
		308	4531			
		309	4529			
		310	4525			
		311	4521			
		312	4517			
		313	4513			
		314	4509			
		315	4505			
		316	4501			
BLOCK 1	LOT	317	10717	CLIFF MOUNTAIN AVE	E/W	PRIVATE STREET
		318	10713			
		319	10709			
		320	10705			
		321	10701			
BLOCK 2	LOT	323	10654	CLIFF MOUNTAIN AVE	E/W	PRIVATE STREET
		324	10658			
		325	10662			
		326	10700			
		327	10704			
		328	10708			
BLOCK 2	LOT	329	10709	MORNING HARBOR AVE	E/W	PRIVATE STREET
		330	10705			
		331	10701			
		332	10663			
		333	10659			
		334	10655			
BLOCK 3	LOT	369	10653	CLIFF MOUNTAIN AVE	E/W	PRIVATE STREET
		370	10657			
Common Area		7A	10680	STANGE AVE	E/W	PUBLIC STREET
		7B	10720			

No addresses for MOXLEY CREEK STREET (N/S Private Street).

125 Amp METER Pedestal For Gate on CA-7A across 4588 Moxley Creek St.
ORIGINAL DATE: 11/20/2002

CITY OF LAS VEGAS
PLANNING & DEVELOPMENT DEPARTMENT



CHRIS DINGELL, PLANNER II

File Copy

MONUMENT @ LONE MOUNTAIN - UNIT 7

(A COMMON INTEREST COMMUNITY)

LOCATED WITHIN THE NORTHEAST QUARTER (NE 1/4) OF THE SOUTHWEST QUARTER (SW 1/4) OF THE NORTHWEST QUARTER (NW 1/4) OF SECTION 1, TOWNSHIP 20 SOUTH, RANGE 50 EAST, M.D.M., CITY OF LAS VEGAS, CLARK COUNTY, NEVADA

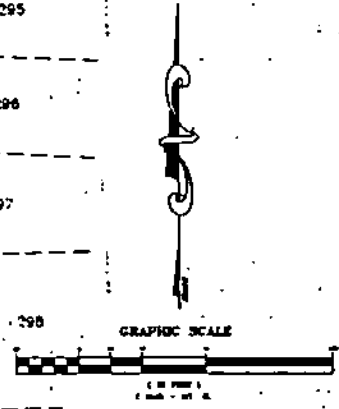
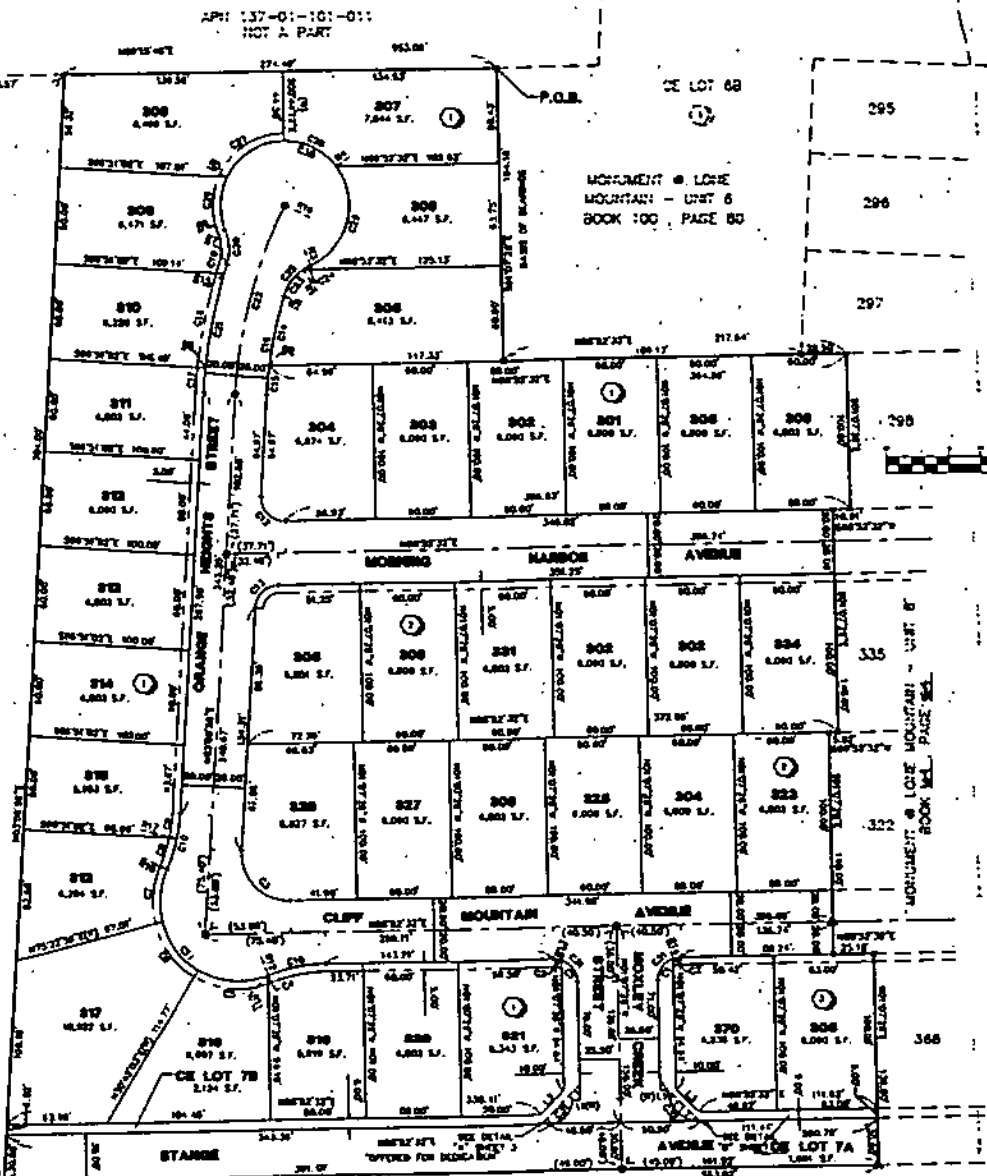
LEGEND

- P.O.B. POINT OF BEGINNING
- BOUNDARY LINE
- RIGHT-OF-WAY LINE
- LOT LINE
- STREET CENTERLINE
- EASEMENT LINE AS SHOWN
- 5' WIDE PROJECTION, SOUTHERN EASEMENT TO PRIVATELY MAINTAINED BY THE H.O.A. FOUND MONUMENT AS DESCRIBED
- 5/8" REBAR & AL. CAP "VIN PLS 11448" 1/2" REFERENCE MONUMENTS IN TOP OF CURB FOR "MONUMENT @ LONE MOUNTAIN - UNIT 7" BOOK 100, PAGE 58
- NAIL AND BRASS TAG "VIN PLS 11448" 1/2" "MONUMENT @ LONE MOUNTAIN - UNIT 7" BOOK 100, PAGE 58
- NAIL AND BRASS TAG "VIN PLS 11448" 1/2" "MONUMENT @ LONE MOUNTAIN - UNIT 7" BOOK 100, PAGE 58
- SET 5/8" REBAR & AL. CAP "VIN PLS 11448" 1/2" REFERENCE MONUMENTS IN TOP OF CURB
- SET NAIL AND BRASS TAG "VIN PLS 11448" 1/2"
- CD CURVE NUMBER
- CL CURVE NUMBER
- RL RADIAL LINE NUMBER
- STL LOT NUMBER - RESIDENTIAL LOTS = 37
COMMON ELEMENT LOTS = 2
TOTAL LOTS = 39
- BLK BLOCK NUMBER
- S.F. SQUARE FEET
- P.U.E. PUBLIC UTILITY EASEMENT
- CE COMMON ELEMENT
- RADIAL RADIAL
- H.O.A. HOME OWNERS ASSOCIATION
- RIGHT VISIBILITY RESTRICTION ZONE (R.V.R.Z.) BY HEIGHT OF LANDSCAPE AND/OR PHYSICAL IMPROVEMENTS WITHIN THIS AREA ARE RESTRICTED TO A MAXIMUM HEIGHT OF 20 FEET TO BE PRIVATELY MAINTAINED

NOTE

1. ALL NEAR LOT CORNERS SHALL BE SET WITH A NAIL AND BRASS TAG "VIN PLS 11448" AND BLOCK TAGS AND ALL POINTS BY SET LOT CORNERS INCLUDING RIGHT-OF-WAY SHALL BE MARKED BY THE SET CURBS OF THE BACK OF CURBS ON THE PROTRUSION OF THE PROPERTY LINES.
2. THE FOLLOWING OF THE INTERIOR STREETS ARE PRIVATE STREETS, PUBLIC UTILITY EASEMENTS (P.U.E.), CITY OF LAS VEGAS DRAINAGE EASEMENTS (C.D.E.) OR FROM SET MAINTAINED BY CITY OF LAS VEGAS (CITY EASEMENTS).
**MOONBORG HARBOR AVENUE,
MOXLEY CREEK STREET, ORANGE HEIGHTS STREET,
CLIFF MOUNTAIN AVENUE**
3. A PRIVATE LANDSCAPE EASEMENT TO BE MAINTAINED BY THE HOA IS NOWY SHOWN OVER ALL OF OR LOT 7A, 7B, 7C.
4. FOR LAL, CLAL, AND RADIAL LINE TABLES SEE SHEET 2.

APR: 137-01-201-013
NOT A PART



ACT	DATE	BY	RECORD
1	10/24/04	12	CLAMMER & LOTS, RINGED BOUNDARY

APR: 137-01-201-013
NOT A PART

N.O. 5630-7
SHEET 2 OF 3
10/24

150W HPS
STA: 12+62.60

320
FF=73.4

327
FF=73.6

326
FF=70.2

INSTALL R1-1 "STOP SIGN"
AND (2)03 "STREET NAME" SIGNS

321
FF=70.1

INSTALL 4" PVC
IRRIGATION SLEEVES

EXIST STUB & C.
INV.=2955.23
S=0.0528

325
FF=66.

EX SSMH
EX.TMH=2961.7±
EX.INV.IN=2954.71
EX.INV.OUT=2954.51
N 26795724.7045
E 730999.3478

STANGE AVENUE

MOXLEY CREEK STREET

MOUNTAIN AVENUE

10.0 LF-8" PVC
WATER

128.00 LF-8" PVC (PUBLIC) WATER

324
FF=61.8

INSTALL (2)03
"STREET NAME" SIGNS

370
FF=60.0

CONNECT SEWER L/
LOTS 369,370 & 3
TO EX. WYES PER

150W HPS
STA: 14+42.60

112.24 LF-8" PVC (PUBLIC) SEWER
S=0.0598

323
FF=55

369
FF=55.7

CONNECT TO EXIST.
5" STUB AND CAP

PRIVATE DRIVE

368

3