

MONUMENT @ LONE MOUNTAIN - UNIT 7

Recorded in Book 107 Page 74 of Plats

200 Scale Map Location: K-1-3

Fire Dept. District Map # 1814:32

MASTER SITE ADDRESS: 10710 STANGE AVE

BLOCK 1	LOT	299	10654	MORNING HARBOR AVE	E/W	PRIVATE STREET
		300	10658			
		301	10662			
		302	10700			
		303	10704			
		304	10708			
BLOCK 1	LOT	305	4524	ORANGE HEIGHTS ST	N/S	PRIVATE STREET
		306	4528			
		307	4532			
		308	4531			
		309	4529			
		310	4525			
		311	4521			
		312	4517			
		313	4513			
		314	4509			
		315	4505			
		316	4501			
BLOCK 1	LOT	317	10717	CLIFF MOUNTAIN AVE	E/W	PRIVATE STREET
		318	10713			
		319	10709			
		320	10705			
		321	10701			
BLOCK 2	LOT	323	10654	CLIFF MOUNTAIN AVE	E/W	PRIVATE STREET
		324	10658			
		325	10662			
		326	10700			
		327	10704			
		328	10708			
BLOCK 2	LOT	329	10709	MORNING HARBOR AVE	E/W	PRIVATE STREET
		330	10705			
		331	10701			
		332	10663			
		333	10659			
		334	10655			
BLOCK 3	LOT	369	10653	CLIFF MOUNTAIN AVE	E/W	PRIVATE STREET
		370	10657			
Common Area		7A	10680	STANGE AVE	E/W	PUBLIC STREET
		7B	10720			

No addresses for MOXLEY CREEK STREET (N/S Private Street).

ORIGINAL DATE: 11/20/2002

CITY OF LAS VEGAS
PLANNING & DEVELOPMENT DEPARTMENT



CHRIS DINGELL, PLANNER II

MONUMENT @ LONE MOUNTAIN - UNIT 7

Recorded in Book 107 Page 74 of Plats

200 Scale Map Location: K-1-3

Fire Dept. District Map # 1814:32

MASTER SITE ADDRESS: 10710 STANGE AVE

BLOCK 1	LOT	299	10654	MORNING HARBOR AVE	E/W	PRIVATE STREET
		300	10658			
		301	10662			
		302	10700			
		303	10704			
		304	10708			
BLOCK 1	LOT	305	4524	ORANGE HEIGHTS ST	N/S	PRIVATE STREET
		306	4528			
		307	4532			
		308	4531			
		309	4529			
		310	4525			
		311	4521			
		312	4517			
		313	4513			
		314	4509			
		315	4505			
		316	4501			
BLOCK 1	LOT	317	10717	CLIFF MOUNTAIN AVE	E/W	PRIVATE STREET
		318	10713			
		319	10709			
		320	10705			
		321	10701			
BLOCK 2	LOT	323	10654	CLIFF MOUNTAIN AVE	E/W	PRIVATE STREET
		324	10658			
		325	10662			
		326	10700			
		327	10704			
		328	10708			
BLOCK 2	LOT	329	10709	MORNING HARBOR AVE	E/W	PRIVATE STREET
		330	10705			
		331	10701			
		332	10663			
		333	10659			
		334	10655			
BLOCK 3	LOT	369	10653	CLIFF MOUNTAIN AVE	E/W	PRIVATE STREET
		370	10657			
Common Area		7A	10680	STANGE AVE	E/W	PUBLIC STREET
		7B	10720			

No addresses for MOXLEY CREEK STREET (N/S Private Street).

ORIGINAL DATE: 11/20/2002

CITY OF LAS VEGAS
PLANNING & DEVELOPMENT DEPARTMENT



CHRIS DINGELL, PLANNER II

MONUMENT @ LONE MOUNTAIN - UNIT 7

Recorded in Book 107 Page 74 of Plats

200 Scale Map Location: K-1-3

Fire Dept. District Map # 1814:32

MASTER SITE ADDRESS: 10710 STANGE AVE

BLOCK 1	LOT	299	10654	MORNING HARBOR AVE	E/W	PRIVATE STREET
		300	10658			
		301	10662			
		302	10700			
		303	10704			
		304	10708			
BLOCK 1	LOT	305	4524	ORANGE HEIGHTS ST	N/S	PRIVATE STREET
		306	4528			
		307	4532			
		308	4531			
		309	4529			
		310	4525			
		311	4521			
		312	4517			
		313	4513			
		314	4509			
		315	4505			
		316	4501			
BLOCK 1	LOT	317	10717	CLIFF MOUNTAIN AVE	E/W	PRIVATE STREET
		318	10713			
		319	10709			
		320	10705			
		321	10701			
BLOCK 2	LOT	323	10654	CLIFF MOUNTAIN AVE	E/W	PRIVATE STREET
		324	10658			
		325	10662			
		326	10700			
		327	10704			
		328	10708			
BLOCK 2	LOT	329	10709	MORNING HARBOR AVE	E/W	PRIVATE STREET
		330	10705			
		331	10701			
		332	10663			
		333	10659			
		334	10655			
BLOCK 3	LOT	369	10653	CLIFF MOUNTAIN AVE	E/W	PRIVATE STREET
		370	10657			
Common Area		7A	10680	STANGE AVE	E/W	PUBLIC STREET
		7B	10720			

No addresses for MOXLEY CREEK STREET (N/S Private Street).

125 Amp METER Pedestal For GND on CA-7A given 4588 Moxley Creek St.
ORIGINAL DATE: 11/20/2002

CITY OF LAS VEGAS
PLANNING & DEVELOPMENT DEPARTMENT



CHRIS DINGELL, PLANNER II

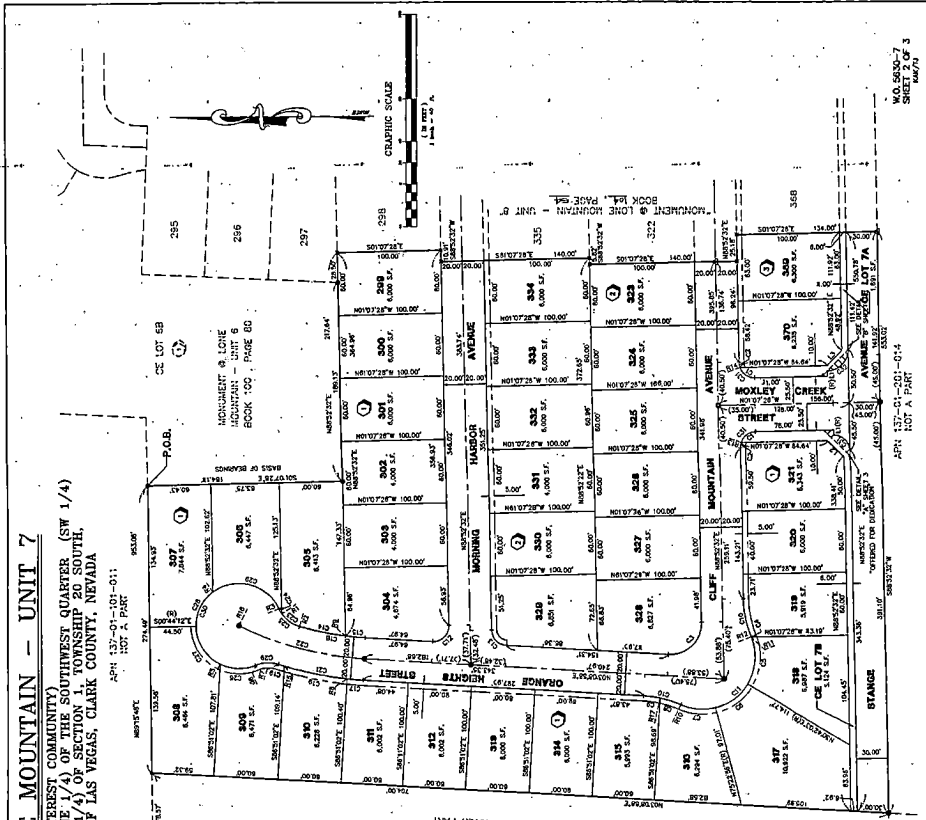
File Copy

MONUMENT @ LONE MOUNTAIN - UNIT 7

(A COMMON INTEREST COMMUNITY)
 LOCATED WITHIN THE NORTHEAST QUARTER (NE 1/4) OF THE SOUTHWEST QUARTER (SW 1/4)
 OF THE NORTHWEST QUARTER (NW 1/4) OF SECTION 1, TOWNSHIP 20 SOUTH,
 RANGE 59 EAST, M.D.M., CITY OF LAS VEGAS, CLARK COUNTY, NEVADA

APN: 137-01-201-011
 NOT A PART

APN: 137-01-201-003
 NOT A PART



LEGEND

- P.O.B. POINT OF BEGINNING
- BOUNDARY LINE
- LOT LINE
- STREET CENTERLINE
- STREET CENTERLINE AND BOUNDARY LINE
- 3/4" WIDE CONCRETE GENERAL EASEMENT TO PRIVATELY MAINTAINED BY THE U.S.A.
- FRONT EASEMENT AS DESCRIBED
- 1/4" WIDE CONCRETE GENERAL EASEMENT TO U.S.A. 1/4" WIDE CONCRETE GENERAL EASEMENT TO U.S.A. 1/4" WIDE CONCRETE GENERAL EASEMENT TO U.S.A. 1/4" WIDE CONCRETE GENERAL EASEMENT TO U.S.A.
- 0 VALUATION BRASS 1/4" DIA. 1/4" HIGH
- 1 VALUATION BRASS 1/4" DIA. 1/4" HIGH
- 2 VALUATION BRASS 1/4" DIA. 1/4" HIGH
- 3 VALUATION BRASS 1/4" DIA. 1/4" HIGH
- 4 VALUATION BRASS 1/4" DIA. 1/4" HIGH
- 5 VALUATION BRASS 1/4" DIA. 1/4" HIGH
- 6 VALUATION BRASS 1/4" DIA. 1/4" HIGH
- 7 VALUATION BRASS 1/4" DIA. 1/4" HIGH
- 8 VALUATION BRASS 1/4" DIA. 1/4" HIGH
- 9 VALUATION BRASS 1/4" DIA. 1/4" HIGH
- 10 VALUATION BRASS 1/4" DIA. 1/4" HIGH
- 11 VALUATION BRASS 1/4" DIA. 1/4" HIGH
- 12 VALUATION BRASS 1/4" DIA. 1/4" HIGH
- 13 VALUATION BRASS 1/4" DIA. 1/4" HIGH
- 14 VALUATION BRASS 1/4" DIA. 1/4" HIGH
- 15 VALUATION BRASS 1/4" DIA. 1/4" HIGH
- 16 VALUATION BRASS 1/4" DIA. 1/4" HIGH
- 17 VALUATION BRASS 1/4" DIA. 1/4" HIGH
- 18 VALUATION BRASS 1/4" DIA. 1/4" HIGH
- 19 VALUATION BRASS 1/4" DIA. 1/4" HIGH
- 20 VALUATION BRASS 1/4" DIA. 1/4" HIGH
- 21 VALUATION BRASS 1/4" DIA. 1/4" HIGH
- 22 VALUATION BRASS 1/4" DIA. 1/4" HIGH
- 23 VALUATION BRASS 1/4" DIA. 1/4" HIGH
- 24 VALUATION BRASS 1/4" DIA. 1/4" HIGH
- 25 VALUATION BRASS 1/4" DIA. 1/4" HIGH
- 26 VALUATION BRASS 1/4" DIA. 1/4" HIGH
- 27 VALUATION BRASS 1/4" DIA. 1/4" HIGH
- 28 VALUATION BRASS 1/4" DIA. 1/4" HIGH
- 29 VALUATION BRASS 1/4" DIA. 1/4" HIGH
- 30 VALUATION BRASS 1/4" DIA. 1/4" HIGH
- 31 VALUATION BRASS 1/4" DIA. 1/4" HIGH
- 32 VALUATION BRASS 1/4" DIA. 1/4" HIGH
- 33 VALUATION BRASS 1/4" DIA. 1/4" HIGH
- 34 VALUATION BRASS 1/4" DIA. 1/4" HIGH
- 35 VALUATION BRASS 1/4" DIA. 1/4" HIGH
- 36 VALUATION BRASS 1/4" DIA. 1/4" HIGH
- 37 VALUATION BRASS 1/4" DIA. 1/4" HIGH
- 38 VALUATION BRASS 1/4" DIA. 1/4" HIGH
- 39 VALUATION BRASS 1/4" DIA. 1/4" HIGH
- 40 VALUATION BRASS 1/4" DIA. 1/4" HIGH
- 41 VALUATION BRASS 1/4" DIA. 1/4" HIGH
- 42 VALUATION BRASS 1/4" DIA. 1/4" HIGH
- 43 VALUATION BRASS 1/4" DIA. 1/4" HIGH
- 44 VALUATION BRASS 1/4" DIA. 1/4" HIGH
- 45 VALUATION BRASS 1/4" DIA. 1/4" HIGH
- 46 VALUATION BRASS 1/4" DIA. 1/4" HIGH
- 47 VALUATION BRASS 1/4" DIA. 1/4" HIGH
- 48 VALUATION BRASS 1/4" DIA. 1/4" HIGH
- 49 VALUATION BRASS 1/4" DIA. 1/4" HIGH
- 50 VALUATION BRASS 1/4" DIA. 1/4" HIGH
- 51 VALUATION BRASS 1/4" DIA. 1/4" HIGH
- 52 VALUATION BRASS 1/4" DIA. 1/4" HIGH
- 53 VALUATION BRASS 1/4" DIA. 1/4" HIGH
- 54 VALUATION BRASS 1/4" DIA. 1/4" HIGH
- 55 VALUATION BRASS 1/4" DIA. 1/4" HIGH
- 56 VALUATION BRASS 1/4" DIA. 1/4" HIGH
- 57 VALUATION BRASS 1/4" DIA. 1/4" HIGH
- 58 VALUATION BRASS 1/4" DIA. 1/4" HIGH
- 59 VALUATION BRASS 1/4" DIA. 1/4" HIGH
- 60 VALUATION BRASS 1/4" DIA. 1/4" HIGH
- 61 VALUATION BRASS 1/4" DIA. 1/4" HIGH
- 62 VALUATION BRASS 1/4" DIA. 1/4" HIGH
- 63 VALUATION BRASS 1/4" DIA. 1/4" HIGH
- 64 VALUATION BRASS 1/4" DIA. 1/4" HIGH
- 65 VALUATION BRASS 1/4" DIA. 1/4" HIGH
- 66 VALUATION BRASS 1/4" DIA. 1/4" HIGH
- 67 VALUATION BRASS 1/4" DIA. 1/4" HIGH
- 68 VALUATION BRASS 1/4" DIA. 1/4" HIGH
- 69 VALUATION BRASS 1/4" DIA. 1/4" HIGH
- 70 VALUATION BRASS 1/4" DIA. 1/4" HIGH
- 71 VALUATION BRASS 1/4" DIA. 1/4" HIGH
- 72 VALUATION BRASS 1/4" DIA. 1/4" HIGH
- 73 VALUATION BRASS 1/4" DIA. 1/4" HIGH
- 74 VALUATION BRASS 1/4" DIA. 1/4" HIGH
- 75 VALUATION BRASS 1/4" DIA. 1/4" HIGH
- 76 VALUATION BRASS 1/4" DIA. 1/4" HIGH
- 77 VALUATION BRASS 1/4" DIA. 1/4" HIGH
- 78 VALUATION BRASS 1/4" DIA. 1/4" HIGH
- 79 VALUATION BRASS 1/4" DIA. 1/4" HIGH
- 80 VALUATION BRASS 1/4" DIA. 1/4" HIGH
- 81 VALUATION BRASS 1/4" DIA. 1/4" HIGH
- 82 VALUATION BRASS 1/4" DIA. 1/4" HIGH
- 83 VALUATION BRASS 1/4" DIA. 1/4" HIGH
- 84 VALUATION BRASS 1/4" DIA. 1/4" HIGH
- 85 VALUATION BRASS 1/4" DIA. 1/4" HIGH
- 86 VALUATION BRASS 1/4" DIA. 1/4" HIGH
- 87 VALUATION BRASS 1/4" DIA. 1/4" HIGH
- 88 VALUATION BRASS 1/4" DIA. 1/4" HIGH
- 89 VALUATION BRASS 1/4" DIA. 1/4" HIGH
- 90 VALUATION BRASS 1/4" DIA. 1/4" HIGH
- 91 VALUATION BRASS 1/4" DIA. 1/4" HIGH
- 92 VALUATION BRASS 1/4" DIA. 1/4" HIGH
- 93 VALUATION BRASS 1/4" DIA. 1/4" HIGH
- 94 VALUATION BRASS 1/4" DIA. 1/4" HIGH
- 95 VALUATION BRASS 1/4" DIA. 1/4" HIGH
- 96 VALUATION BRASS 1/4" DIA. 1/4" HIGH
- 97 VALUATION BRASS 1/4" DIA. 1/4" HIGH
- 98 VALUATION BRASS 1/4" DIA. 1/4" HIGH
- 99 VALUATION BRASS 1/4" DIA. 1/4" HIGH
- 100 VALUATION BRASS 1/4" DIA. 1/4" HIGH

NOTE

- ALL LOTS ARE TO BE CONVEYED TO THE CITY OF LAS VEGAS BY THE CITY OF LAS VEGAS AND SHALL BE SUBJECT TO THE CITY OF LAS VEGAS DEVELOPMENT CODE AND THE CITY OF LAS VEGAS ZONING ORDINANCES. THE CITY OF LAS VEGAS SHALL BE RESPONSIBLE FOR THE MAINTENANCE OF THE STREETS AND UTILITIES WITHIN THE PLAT AREA.
- THE CITY OF LAS VEGAS SHALL BE RESPONSIBLE FOR THE MAINTENANCE OF THE STREETS AND UTILITIES WITHIN THE PLAT AREA.
- THE CITY OF LAS VEGAS SHALL BE RESPONSIBLE FOR THE MAINTENANCE OF THE STREETS AND UTILITIES WITHIN THE PLAT AREA.
- FOR THE CITY OF LAS VEGAS AND THE CITY OF LAS VEGAS SHALL BE RESPONSIBLE FOR THE MAINTENANCE OF THE STREETS AND UTILITIES WITHIN THE PLAT AREA.

MONUMENT @ LONE MOUNTAIN - UNIT 7
MORNING AVENUE
CLIFF AVENUE

LOT	AREA	PERCENTAGE
1	1.00	100.00
2	1.00	100.00
3	1.00	100.00
4	1.00	100.00
5	1.00	100.00
6	1.00	100.00
7	1.00	100.00
8	1.00	100.00
9	1.00	100.00
10	1.00	100.00
11	1.00	100.00
12	1.00	100.00
13	1.00	100.00
14	1.00	100.00
15	1.00	100.00
16	1.00	100.00
17	1.00	100.00
18	1.00	100.00
19	1.00	100.00
20	1.00	100.00
21	1.00	100.00
22	1.00	100.00
23	1.00	100.00
24	1.00	100.00
25	1.00	100.00
26	1.00	100.00
27	1.00	100.00
28	1.00	100.00
29	1.00	100.00
30	1.00	100.00
31	1.00	100.00
32	1.00	100.00
33	1.00	100.00
34	1.00	100.00
35	1.00	100.00
36	1.00	100.00
37	1.00	100.00
38	1.00	100.00
39	1.00	100.00
40	1.00	100.00
41	1.00	100.00
42	1.00	100.00
43	1.00	100.00
44	1.00	100.00
45	1.00	100.00
46	1.00	100.00
47	1.00	100.00
48	1.00	100.00
49	1.00	100.00
50	1.00	100.00
51	1.00	100.00
52	1.00	100.00
53	1.00	100.00
54	1.00	100.00
55	1.00	100.00
56	1.00	100.00
57	1.00	100.00
58	1.00	100.00
59	1.00	100.00
60	1.00	100.00
61	1.00	100.00
62	1.00	100.00
63	1.00	100.00
64	1.00	100.00
65	1.00	100.00
66	1.00	100.00
67	1.00	100.00
68	1.00	100.00
69	1.00	100.00
70	1.00	100.00
71	1.00	100.00
72	1.00	100.00
73	1.00	100.00
74	1.00	100.00
75	1.00	100.00
76	1.00	100.00
77	1.00	100.00
78	1.00	100.00
79	1.00	100.00
80	1.00	100.00
81	1.00	100.00
82	1.00	100.00
83	1.00	100.00
84	1.00	100.00
85	1.00	100.00
86	1.00	100.00
87	1.00	100.00
88	1.00	100.00
89	1.00	100.00
90	1.00	100.00
91	1.00	100.00
92	1.00	100.00
93	1.00	100.00
94	1.00	100.00
95	1.00	100.00
96	1.00	100.00
97	1.00	100.00
98	1.00	100.00
99	1.00	100.00
100	1.00	100.00

150W HPS
STA: 12+62.60

320
FF=73.4

327
FF=73.6

INSTALL R1-1 "STOP SIGN"
AND (2)D3 "STREET NAME" SIGNS

321
FF=70.1

INSTALL 4" PVC
IRRIGATION SLEEVES

326
FF=70.2

EXIST STUB & C.
INV.=2955.23
S=0.0528

325
FF=66.

EX SSMH
EX.TMH=2961.7±
EX.INV.IN=2954.71
EX.INV.OUT=2954.51
N 26795724.7045
E 730999.3478

STANGE AVENUE

MOXLEY CREEK STREET

10.0 LF-8" PVC
WATER

128.00 LF-8" PVC (PUBLIC) WATER

324
FF=61.8

CONNECT SEWER L/
LOTS 369,370 & 3
TO EX. WYES PER.

INSTALL (2)D3
"STREET NAME" SIGNS

370
FF=60.0

150W HPS
STA: 14+42.60

112.24 LF-8" PVC (PUBLIC) WATER
19.0'
6.0'
SEWER @ S=0.0598

323
FF=5'

369
FF=55.7

CONNECT TO EXIST.
5" STUB AND CAP

PRIVATE DRIVE

368

3

14+30.14