

CENTENNIAL CONDOMINIUMS

File Copy

Recorded in Book 141 Page 013 of Plats

MASTER SITE ADDRESS: 10697 W CENTENNIAL PKWY

Fire Department District Map Number:

01614-11

<u>Building</u>	<u>Unit</u>	<u>Address</u>
1	1001	10697 W CENTENNIAL PKWY
	1002	10697 W CENTENNIAL PKWY
	1006	10697 W CENTENNIAL PKWY
	1007	10697 W CENTENNIAL PKWY
	1008	10697 W CENTENNIAL PKWY
	2001	10697 W CENTENNIAL PKWY
	2002	10697 W CENTENNIAL PKWY
	2003	10697 W CENTENNIAL PKWY
	2004	10697 W CENTENNIAL PKWY
	2005	10697 W CENTENNIAL PKWY
	2006	10697 W CENTENNIAL PKWY
	2007	10697 W CENTENNIAL PKWY
	2008	10697 W CENTENNIAL PKWY
	3001	10697 W CENTENNIAL PKWY
	3002	10697 W CENTENNIAL PKWY
	3003	10697 W CENTENNIAL PKWY
	3004	10697 W CENTENNIAL PKWY
	3005	10697 W CENTENNIAL PKWY
	3006	10697 W CENTENNIAL PKWY
	3007	10697 W CENTENNIAL PKWY
	3008	10697 W CENTENNIAL PKWY
2	1009	10697 W CENTENNIAL PKWY
	1010	10697 W CENTENNIAL PKWY
	1011	10697 W CENTENNIAL PKWY
	1016	10697 W CENTENNIAL PKWY
	1017	10697 W CENTENNIAL PKWY
	1018	10697 W CENTENNIAL PKWY
	1019	10697 W CENTENNIAL PKWY
	2009	10697 W CENTENNIAL PKWY
	2010	10697 W CENTENNIAL PKWY
	2011	10697 W CENTENNIAL PKWY
	2012	10697 W CENTENNIAL PKWY
	2013	10697 W CENTENNIAL PKWY

CENTENNIAL CONDOMINIUMS

Recorded in Book 141 Page 013 of Plats

MASTER SITE ADDRESS: 10697 W CENTENNIAL PKWY

Fire Department District Map Number:

01614-11

<u>Building</u>	<u>Unit</u>	<u>Address</u>
2	2014	10697 W CENTENNIAL PKWY
	2015	10697 W CENTENNIAL PKWY
	2016	10697 W CENTENNIAL PKWY
	2017	10697 W CENTENNIAL PKWY
	2018	10697 W CENTENNIAL PKWY
	2019	10697 W CENTENNIAL PKWY
	3009	10697 W CENTENNIAL PKWY
	3010	10697 W CENTENNIAL PKWY
	3011	10697 W CENTENNIAL PKWY
	3012	10697 W CENTENNIAL PKWY
	3013	10697 W CENTENNIAL PKWY
	3014	10697 W CENTENNIAL PKWY
	3015	10697 W CENTENNIAL PKWY
	3016	10697 W CENTENNIAL PKWY
	3017	10697 W CENTENNIAL PKWY
	3018	10697 W CENTENNIAL PKWY
	3019	10697 W CENTENNIAL PKWY
3	1020	10697 W CENTENNIAL PKWY
	1021	10697 W CENTENNIAL PKWY
	1022	10697 W CENTENNIAL PKWY
	1027	10697 W CENTENNIAL PKWY
	1028	10697 W CENTENNIAL PKWY
	1029	10697 W CENTENNIAL PKWY
	1030	10697 W CENTENNIAL PKWY
	2020	10697 W CENTENNIAL PKWY
	2021	10697 W CENTENNIAL PKWY
	2022	10697 W CENTENNIAL PKWY
	2023	10697 W CENTENNIAL PKWY
	2024	10697 W CENTENNIAL PKWY
	2025	10697 W CENTENNIAL PKWY
	2026	10697 W CENTENNIAL PKWY
	2027	10697 W CENTENNIAL PKWY
	2028	10697 W CENTENNIAL PKWY

CENTENNIAL CONDOMINIUMS

Recorded in Book 141 Page 013 of Plats

MASTER SITE ADDRESS: 10697 W CENTENNIAL PKWY

Fire Department District Map Number:

01614-11

<u>Building</u>	<u>Unit</u>	<u>Address</u>
3	2029	10697 W CENTENNIAL PKWY
	2030	10697 W CENTENNIAL PKWY
	3020	10697 W CENTENNIAL PKWY
	3021	10697 W CENTENNIAL PKWY
	3022	10697 W CENTENNIAL PKWY
	3023	10697 W CENTENNIAL PKWY
	3024	10697 W CENTENNIAL PKWY
	3025	10697 W CENTENNIAL PKWY
	3026	10697 W CENTENNIAL PKWY
	3027	10697 W CENTENNIAL PKWY
	3028	10697 W CENTENNIAL PKWY
	3029	10697 W CENTENNIAL PKWY
	3030	10697 W CENTENNIAL PKWY
4	1031	10697 W CENTENNIAL PKWY
	1032	10697 W CENTENNIAL PKWY
	1033	10697 W CENTENNIAL PKWY
	1038	10697 W CENTENNIAL PKWY
	1039	10697 W CENTENNIAL PKWY
	1040	10697 W CENTENNIAL PKWY
	1041	10697 W CENTENNIAL PKWY
	2031	10697 W CENTENNIAL PKWY
	2032	10697 W CENTENNIAL PKWY
	2033	10697 W CENTENNIAL PKWY
	2034	10697 W CENTENNIAL PKWY
	2035	10697 W CENTENNIAL PKWY
	2036	10697 W CENTENNIAL PKWY
	2037	10697 W CENTENNIAL PKWY
	2038	10697 W CENTENNIAL PKWY
	2039	10697 W CENTENNIAL PKWY
	2040	10697 W CENTENNIAL PKWY
	2041	10697 W CENTENNIAL PKWY
	3031	10697 W CENTENNIAL PKWY
	3032	10697 W CENTENNIAL PKWY

CENTENNIAL CONDOMINIUMS

Recorded in Book 141 Page 013 of Plats

MASTER SITE ADDRESS: 10697 W CENTENNIAL PK WY

Fire Department District Map Number:

01614-11

<u>Building</u>	<u>Unit</u>	<u>Address</u>
4	3033	10697 W CENTENNIAL PK WY
	3034	10697 W CENTENNIAL PK WY
	3035	10697 W CENTENNIAL PK WY
	3036	10697 W CENTENNIAL PK WY
	3037	10697 W CENTENNIAL PK WY
	3038	10697 W CENTENNIAL PK WY
	3039	10697 W CENTENNIAL PK WY
	3040	10697 W CENTENNIAL PK WY
	3041	10697 W CENTENNIAL PK WY
5	1042	10697 W CENTENNIAL PK WY
	1043	10697 W CENTENNIAL PK WY
	1044	10697 W CENTENNIAL PK WY
	1045	10697 W CENTENNIAL PK WY
	1046	10697 W CENTENNIAL PK WY
	1047	10697 W CENTENNIAL PK WY
	1048	10697 W CENTENNIAL PK WY
	1049	10697 W CENTENNIAL PK WY
	1058	10697 W CENTENNIAL PK WY
	1059	10697 W CENTENNIAL PK WY
	1060	10697 W CENTENNIAL PK WY
	1061	10697 W CENTENNIAL PK WY
	1062	10697 W CENTENNIAL PK WY
	1063	10697 W CENTENNIAL PK WY
	1064	10697 W CENTENNIAL PK WY
	2042	10697 W CENTENNIAL PK WY
	2043	10697 W CENTENNIAL PK WY
	2044	10697 W CENTENNIAL PK WY
	2045	10697 W CENTENNIAL PK WY
	2046	10697 W CENTENNIAL PK WY
	2047	10697 W CENTENNIAL PK WY
	2048	10697 W CENTENNIAL PK WY
	2049	10697 W CENTENNIAL PK WY
	2050	10697 W CENTENNIAL PK WY

CENTENNIAL CONDOMINIUMS

Recorded in Book 141 Page 013 of Plats

MASTER SITE ADDRESS: 10697 W CENTENNIAL PKWY

Fire Department District Map Number:

01614-11

<u>Building</u>	<u>Unit</u>	<u>Address</u>
5	2051	10697 W CENTENNIAL PKWY
	2052	10697 W CENTENNIAL PKWY
	2053	10697 W CENTENNIAL PKWY
	2054	10697 W CENTENNIAL PKWY
	2055	10697 W CENTENNIAL PKWY
	2056	10697 W CENTENNIAL PKWY
	2057	10697 W CENTENNIAL PKWY
	2058	10697 W CENTENNIAL PKWY
	2059	10697 W CENTENNIAL PKWY
	2060	10697 W CENTENNIAL PKWY
	2061	10697 W CENTENNIAL PKWY
	2062	10697 W CENTENNIAL PKWY
	2063	10697 W CENTENNIAL PKWY
	2064	10697 W CENTENNIAL PKWY
	3042	10697 W CENTENNIAL PKWY
	3043	10697 W CENTENNIAL PKWY
	3044	10697 W CENTENNIAL PKWY
	3045	10697 W CENTENNIAL PKWY
	3046	10697 W CENTENNIAL PKWY
	3047	10697 W CENTENNIAL PKWY
	3048	10697 W CENTENNIAL PKWY
	3049	10697 W CENTENNIAL PKWY
	3050	10697 W CENTENNIAL PKWY
	3051	10697 W CENTENNIAL PKWY
	3052	10697 W CENTENNIAL PKWY
	3053	10697 W CENTENNIAL PKWY
	3054	10697 W CENTENNIAL PKWY
	3055	10697 W CENTENNIAL PKWY
	3056	10697 W CENTENNIAL PKWY
	3057	10697 W CENTENNIAL PKWY
	3058	10697 W CENTENNIAL PKWY
	3059	10697 W CENTENNIAL PKWY
	3060	10697 W CENTENNIAL PKWY

CENTENNIAL CONDOMINIUMS

Recorded in Book 141 Page 013 of Plats

MASTER SITE ADDRESS: 10697 W CENTENNIAL PKWY

Fire Department District Map Number:

01614-11

<u>Building</u>	<u>Unit</u>	<u>Address</u>
5	3061	10697 W CENTENNIAL PKWY
	3062	10697 W CENTENNIAL PKWY
	3063	10697 W CENTENNIAL PKWY
	3064	10697 W CENTENNIAL PKWY
6	1065	10697 W CENTENNIAL PKWY
	1066	10697 W CENTENNIAL PKWY
	1067	10697 W CENTENNIAL PKWY
	1072	10697 W CENTENNIAL PKWY
	1073	10697 W CENTENNIAL PKWY
	1074	10697 W CENTENNIAL PKWY
	1075	10697 W CENTENNIAL PKWY
	2065	10697 W CENTENNIAL PKWY
	2066	10697 W CENTENNIAL PKWY
	2067	10697 W CENTENNIAL PKWY
	2068	10697 W CENTENNIAL PKWY
	2069	10697 W CENTENNIAL PKWY
	2070	10697 W CENTENNIAL PKWY
	2071	10697 W CENTENNIAL PKWY
	2072	10697 W CENTENNIAL PKWY
	2073	10697 W CENTENNIAL PKWY
	2074	10697 W CENTENNIAL PKWY
	2075	10697 W CENTENNIAL PKWY
	3065	10697 W CENTENNIAL PKWY
	3066	10697 W CENTENNIAL PKWY
	3067	10697 W CENTENNIAL PKWY
	3068	10697 W CENTENNIAL PKWY
	3069	10697 W CENTENNIAL PKWY
	3070	10697 W CENTENNIAL PKWY
	3071	10697 W CENTENNIAL PKWY
	3072	10697 W CENTENNIAL PKWY
	3073	10697 W CENTENNIAL PKWY
	3074	10697 W CENTENNIAL PKWY
	3075	10697 W CENTENNIAL PKWY

CENTENNIAL CONDOMINIUMS

Recorded in Book 141 Page 013 of Plats

MASTER SITE ADDRESS: 10697 W CENTENNIAL PKWY

Fire Department District Map Number:

01614-11

<u>Building</u>	<u>Unit</u>	<u>Address</u>
7	1076	10697 W CENTENNIAL PKWY
	1077	10697 W CENTENNIAL PKWY
	1081	10697 W CENTENNIAL PKWY
	1082	10697 W CENTENNIAL PKWY
	1083	10697 W CENTENNIAL PKWY
	2076	10697 W CENTENNIAL PKWY
	2077	10697 W CENTENNIAL PKWY
	2078	10697 W CENTENNIAL PKWY
	2079	10697 W CENTENNIAL PKWY
	2080	10697 W CENTENNIAL PKWY
	2081	10697 W CENTENNIAL PKWY
	2082	10697 W CENTENNIAL PKWY
	2083	10697 W CENTENNIAL PKWY
	3076	10697 W CENTENNIAL PKWY
	3077	10697 W CENTENNIAL PKWY
	3078	10697 W CENTENNIAL PKWY
	3079	10697 W CENTENNIAL PKWY
	3080	10697 W CENTENNIAL PKWY
	3081	10697 W CENTENNIAL PKWY
	3082	10697 W CENTENNIAL PKWY
	3083	10697 W CENTENNIAL PKWY
8	1084	10697 W CENTENNIAL PKWY
	1085	10697 W CENTENNIAL PKWY
	1089	10697 W CENTENNIAL PKWY
	1090	10697 W CENTENNIAL PKWY
	1091	10697 W CENTENNIAL PKWY
	2084	10697 W CENTENNIAL PKWY
	2085	10697 W CENTENNIAL PKWY
	2086	10697 W CENTENNIAL PKWY
	2087	10697 W CENTENNIAL PKWY
	2088	10697 W CENTENNIAL PKWY
	2089	10697 W CENTENNIAL PKWY
	2090	10697 W CENTENNIAL PKWY

CENTENNIAL CONDOMINIUMS

Recorded in Book 141 Page 013 of Plats

MASTER SITE ADDRESS: 10697 W CENTENNIAL PKWY

Fire Department District Map Number:

01614-11

<u>Building</u>	<u>Unit</u>	<u>Address</u>
8	2091	10697 W CENTENNIAL PKWY
	3085	10697 W CENTENNIAL PKWY
	3086	10697 W CENTENNIAL PKWY
	3087	10697 W CENTENNIAL PKWY
	3088	10697 W CENTENNIAL PKWY
	3089	10697 W CENTENNIAL PKWY
	3090	10697 W CENTENNIAL PKWY
	3091	10697 W CENTENNIAL PKWY
9	1092	10697 W CENTENNIAL PKWY
	1093	10697 W CENTENNIAL PKWY
	1097	10697 W CENTENNIAL PKWY
	1098	10697 W CENTENNIAL PKWY
	1099	10697 W CENTENNIAL PKWY
	1110	10697 W CENTENNIAL PKWY
	2092	10697 W CENTENNIAL PKWY
	2093	10697 W CENTENNIAL PKWY
	2094	10697 W CENTENNIAL PKWY
	2095	10697 W CENTENNIAL PKWY
	2096	10697 W CENTENNIAL PKWY
	2097	10697 W CENTENNIAL PKWY
	2098	10697 W CENTENNIAL PKWY
	2099	10697 W CENTENNIAL PKWY
	3092	10697 W CENTENNIAL PKWY
	3093	10697 W CENTENNIAL PKWY
	3094	10697 W CENTENNIAL PKWY
	3096	10697 W CENTENNIAL PKWY
	3097	10697 W CENTENNIAL PKWY
	3098	10697 W CENTENNIAL PKWY
	3099	10697 W CENTENNIAL PKWY
10	1100	10697 W CENTENNIAL PKWY
	1101	10697 W CENTENNIAL PKWY
	1105	10697 W CENTENNIAL PKWY
	1106	10697 W CENTENNIAL PKWY

CENTENNIAL CONDOMINIUMS

Recorded in Book 141 Page 013 of Plats

MASTER SITE ADDRESS: 10697 W CENTENNIAL PKWY

Fire Department District Map Number:

01614-11

<u>Building</u>	<u>Unit</u>	<u>Address</u>
10	1107	10697 W CENTENNIAL PKWY
	2100	10697 W CENTENNIAL PKWY
	2101	10697 W CENTENNIAL PKWY
	2102	10697 W CENTENNIAL PKWY
	2103	10697 W CENTENNIAL PKWY
	2104	10697 W CENTENNIAL PKWY
	2105	10697 W CENTENNIAL PKWY
	2106	10697 W CENTENNIAL PKWY
	2107	10697 W CENTENNIAL PKWY
	3100	10697 W CENTENNIAL PKWY
	3101	10697 W CENTENNIAL PKWY
	3102	10697 W CENTENNIAL PKWY
	3103	10697 W CENTENNIAL PKWY
	3104	10697 W CENTENNIAL PKWY
	3105	10697 W CENTENNIAL PKWY
	3106	10697 W CENTENNIAL PKWY
	3107	10697 W CENTENNIAL PKWY
11	1108	10697 W CENTENNIAL PKWY
	1109	10697 W CENTENNIAL PKWY
	1115	10697 W CENTENNIAL PKWY
	1116	10697 W CENTENNIAL PKWY
	1117	10697 W CENTENNIAL PKWY
	1118	10697 W CENTENNIAL PKWY
	2108	10697 W CENTENNIAL PKWY
	2109	10697 W CENTENNIAL PKWY
	2110	10697 W CENTENNIAL PKWY
	2111	10697 W CENTENNIAL PKWY
	2112	10697 W CENTENNIAL PKWY
	2113	10697 W CENTENNIAL PKWY
	2114	10697 W CENTENNIAL PKWY
	2115	10697 W CENTENNIAL PKWY
	2116	10697 W CENTENNIAL PKWY
	2117	10697 W CENTENNIAL PKWY

CENTENNIAL CONDOMINIUMS

Recorded in Book 141 Page 013 of Plats

MASTER SITE ADDRESS: 10697 W CENTENNIAL PKWY

Fire Department District Map Number:

01614-11

<u>Building</u>	<u>Unit</u>	<u>Address</u>
11	2118	10697 W CENTENNIAL PKWY
	3108	10697 W CENTENNIAL PKWY
	3109	10697 W CENTENNIAL PKWY
	3110	10697 W CENTENNIAL PKWY
	3111	10697 W CENTENNIAL PKWY
	3112	10697 W CENTENNIAL PKWY
	3113	10697 W CENTENNIAL PKWY
	3114	10697 W CENTENNIAL PK WY
	3115	10697 W CENTENNIAL PKWY
	3116	10697 W CENTENNIAL PKWY
	3117	10697 W CENTENNIAL PKWY
	3118	10697 W CENTENNIAL PKWY
12	1119	10697 W CENTENNIAL PKWY
	1120	10697 W CENTENNIAL PKWY
	1121	10697 W CENTENNIAL PKWY
	1122	10697 W CENTENNIAL PK WY
	1123	10697 W CENTENNIAL PKWY
	1124	10697 W CENTENNIAL PKWY
	1125	10697 W CENTENNIAL PKWY
	1126	10697 W CENTENNIAL PKWY
	1135	10697 W CENTENNIAL PK WY
	1136	10697 W CENTENNIAL PKWY
	1137	10697 W CENTENNIAL PKWY
	1138	10697 W CENTENNIAL PK WY
	1139	10697 W CENTENNIAL PKWY
	1140	10697 W CENTENNIAL PKWY
	1141	10697 W CENTENNIAL PKWY
	2119	10697 W CENTENNIAL PKWY
	2120	10697 W CENTENNIAL PKWY
	2121	10697 W CENTENNIAL PKWY
	2122	10697 W CENTENNIAL PKWY
	2123	10697 W CENTENNIAL PKWY
	2124	10697 W CENTENNIAL PKWY

CENTENNIAL CONDOMINIUMS

Recorded in Book 141 Page 013 of Plats

MASTER SITE ADDRESS: 10697 W CENTENNIAL PKWY

Fire Department District Map Number:

01614-11

<u>Building</u>	<u>Unit</u>	<u>Address</u>
12	2125	10697 W CENTENNIAL PKWY
	2126	10697 W CENTENNIAL PKWY
	2127	10697 W CENTENNIAL PKWY
	2128	10697 W CENTENNIAL PKWY
	2129	10697 W CENTENNIAL PKWY
	2130	10697 W CENTENNIAL PKWY
	2131	10697 W CENTENNIAL PKWY
	2132	10697 W CENTENNIAL PKWY
	2133	10697 W CENTENNIAL PKWY
	2134	10697 W CENTENNIAL PKWY
	2135	10697 W CENTENNIAL PKWY
	2136	10697 W CENTENNIAL PKWY
	2137	10697 W CENTENNIAL PKWY
	2138	10697 W CENTENNIAL PKWY
	2139	10697 W CENTENNIAL PKWY
	2140	10697 W CENTENNIAL PKWY
	2141	10697 W CENTENNIAL PKWY
	3119	10697 W CENTENNIAL PKWY
	3120	10697 W CENTENNIAL PKWY
	3121	10697 W CENTENNIAL PKWY
	3122	10697 W CENTENNIAL PKWY
	3123	10697 W CENTENNIAL PKWY
	3124	10697 W CENTENNIAL PKWY
	3125	10697 W CENTENNIAL PKWY
	3126	10697 W CENTENNIAL PKWY
	3127	10697 W CENTENNIAL PKWY
	3128	10697 W CENTENNIAL PKWY
	3129	10697 W CENTENNIAL PKWY
	3130	10697 W CENTENNIAL PKWY
	3131	10697 W CENTENNIAL PKWY
	3132	10697 W CENTENNIAL PKWY
	3133	10697 W CENTENNIAL PKWY
	3134	10697 W CENTENNIAL PKWY

CENTENNIAL CONDOMINIUMS

Recorded in Book 141 Page 013 of Plats

MASTER SITE ADDRESS: 10697 W CENTENNIAL PKWY

Fire Department District Map Number:

01614-11

<u>Building</u>	<u>Unit</u>	<u>Address</u>
12	3135	10697 W CENTENNIAL PKWY
	3136	10697 W CENTENNIAL PKWY
	3137	10697 W CENTENNIAL PKWY
	3138	10697 W CENTENNIAL PKWY
	3139	10697 W CENTENNIAL PKWY
	3140	10697 W CENTENNIAL PKWY
	3141	10697 W CENTENNIAL PKWY
13	1142	10697 W CENTENNIAL PKWY
	1143	10697 W CENTENNIAL PKWY
	1147	10697 W CENTENNIAL PKWY
	1148	10697 W CENTENNIAL PKWY
	1149	10697 W CENTENNIAL PKWY
	2142	10697 W CENTENNIAL PKWY
	2143	10697 W CENTENNIAL PKWY
	2144	10697 W CENTENNIAL PKWY
	2145	10697 W CENTENNIAL PKWY
	2146	10697 W CENTENNIAL PKWY
	2147	10697 W CENTENNIAL PKWY
	2148	10697 W CENTENNIAL PKWY
	2149	10697 W CENTENNIAL PKWY
	3142	10697 W CENTENNIAL PKWY
	3143	10697 W CENTENNIAL PKWY
	3144	10697 W CENTENNIAL PKWY
	3145	10697 W CENTENNIAL PKWY
	3146	10697 W CENTENNIAL PKWY
	3147	10697 W CENTENNIAL PKWY
	3148	10697 W CENTENNIAL PKWY
	3149	10697 W CENTENNIAL PKWY
14	1150	10697 W CENTENNIAL PKWY
	1151	10697 W CENTENNIAL PKWY
	1155	10697 W CENTENNIAL PKWY
	1156	10697 W CENTENNIAL PKWY
	1157	10697 W CENTENNIAL PKWY

CENTENNIAL CONDOMINIUMS

Recorded in Book 141 Page 013 of Plats

MASTER SITE ADDRESS: 10697 W CENTENNIAL PKWY

Fire Department District Map Number:

01614-11

<u>Building</u>	<u>Unit</u>	<u>Address</u>
14	2150	10697 W CENTENNIAL PKWY
	2151	10697 W CENTENNIAL PKWY
	2152	10697 W CENTENNIAL PKWY
	2153	10697 W CENTENNIAL PKWY
	2154	10697 W CENTENNIAL PKWY
	2155	10697 W CENTENNIAL PKWY
	2156	10697 W CENTENNIAL PKWY
	2157	10697 W CENTENNIAL PKWY
	3150	10697 W CENTENNIAL PKWY
	3151	10697 W CENTENNIAL PKWY
	3152	10697 W CENTENNIAL PKWY
	3153	10697 W CENTENNIAL PKWY
	3154	10697 W CENTENNIAL PKWY
	3155	10697 W CENTENNIAL PKWY
	3156	10697 W CENTENNIAL PKWY
	3157	10697 W CENTENNIAL PKWY

Mark Rex, Planner I



File Copy

Receipt/Conformed Copy

November 17, 2008
188100435

Mr. Alan Riecki, P.L.S.
City Surveyor
City of Las Vegas
3001 Ronemus Drive
Las Vegas, NV 89128

Requestor:
STANTEC CONSULTING INC
11/26/2008 10:13:58 T20080292241
Book/Instr: 20081126-0001566
Cert Amend Plat Page Count: 2
Fees: \$15.00 N/C Fee: \$0.00

Debbie Conway
Clark County Recorder

CERTIFICATE OF AMENDMENT

DOCUMENT: Final Map of Centennial Condominiums, a Common Interest
Condominium Subdivision
Book 141, Page 13 of Plats (FMP-26932)

LEGAL DESCRIPTION:

Located in a portion of the Northwest Quarter (NW ¼) of the Northwest Quarter (NW ¼) of
Section 25, Township 19 South, Range 59 east, M.D.M., City of Las Vegas, Clark County,
Nevada.

RECORDING DATE: October 24, 2008

Dear Mr. Riecki:

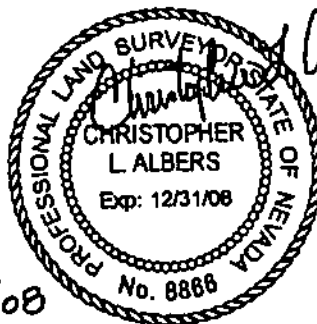
The building numbers shown on Sheet 3 of the above referenced Plat of Centennial
Condominiums, a Common Interest Condominium Subdivision, are incorrectly labeled and
should be changed to match the building numbers as shown on Sheet 4 of the Plat.

This certificate of amendment does not move or alter any platted line or move any survey
monument. This document supersedes the original recorded document.

Sincerely,

STANTEC CONSULTING LTD.

Christopher L. Albers
Professional Land Surveyor
Nevada License No. 8866



188100435

**Certificate of Amendment for
Centennial Condominiums, a Common Interest Condominium Subdivision
Book 141, Page 13 of Plats (FMP-26932)
Recorded October 24, 2008**

I hereby certify that I have examined the Certificate of Amendment and that the changes to the original document specified therein are provided for in applicable sections of NRS 278.010 to 278.630, inclusive, NRS 625.340 to 625.380, inclusive, and local ordinances adopted pursuant thereto, and I am satisfied that this Certificate of Amendment so amends or corrects the document as to make it technically correct.

 11/20/08

Alan Riecki, P.L.S.
City of Las Vegas Surveyor
Nevada Certificate No. 12469

When recorded return to:
Stantec Consulting, Inc.
7450 Arroyo Crossing Parkway, Suite 100
Las Vegas, NV 89113



CITY OF LAS VEGAS

Mark Rex, Planner I
Planning & Development Department
731 South Fourth Street
Las Vegas, NV 89101
Voice – (702) 229-6894
Fax – (702) 474-0352
E-mail: mrex@lasvegasnevada.gov

Date:	11/13/2008	To:	Valerie Livengood
Fax Number:	(702) 258-4956	Company:	Stantec
Voice Number:	(702) 258-0115		

CLV Project Number:	Centennial Condominiums
Description:	Final Map 26932 sheet # 3

In reviewing Final Map (FMP) 26932 for addressing purposes I discovered errors that need corrected prior to creating unit addresses.

Building numbers 1 through 11 are labeled wrong on sheet number three. Revise building numbers 1-11 on sheet number three to reflect their correct building locations. Correct building locations are detailed on sheet number four.

Once sheet number three is corrected contact me to proceed with the addressing process.
If you have any questions contact me.

Transmittal



Stantec

Stantec Consulting Inc.
7450 Arroyo Crossing Parkway, Suite 100
Las Vegas NV 89113
Tel: (702) 258-0115 Fax: (702) 258-4956

To:	City of Las Vegas, Planning ADDRESSING 731 S. Fourth Street Las Vegas, NV 89101	Delivered	VIA ACTION MESSENGER
Attention:	Mark Rex/Angie Horn	<input type="checkbox"/>	For Your Information
Date:	October 29, 2008	<input checked="" type="checkbox"/>	For Your Approval
File:	188100435	<input checked="" type="checkbox"/>	For Your Review
Sender:	Valerie Livengood	<input type="checkbox"/>	As Requested

**Reference: Centennial Condominiums – ADDRESSING
FMP 26932**

Quantity	Description
2	24" x 36" Bond Copies of Recorded Final Map
1	24" x 36" Duplicate Mylar Copy of Recorded Final Map
1	11"x 17" bond copy of Recorded Final Map

Remarks:

Mark,

As usual our Client is extremely eager to obtain their addressing. If there is anything you can do to speed up the process we would be very appreciative.

If you have any question or need any further information feel free to call (702) 258-0115.

Thank you in advance for your assistance.

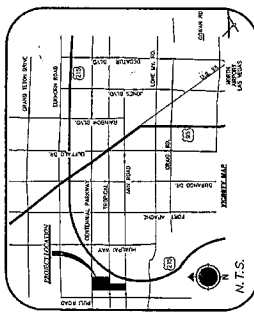
Valerie Livengood
Tel: 702-258-0115
Fax: 702-258-4956
Valerie.livengood@stantec.com

RECEIVED
 08 OCT 29 PM 4: 14
 PLANNING AND DEVELOPMENT

*Rec'd 11/3/08 9am
Angie Horn*

File Copy

FINAL MAP OF CENTENNIAL CONDOMINIUMS



OWNERS CERTIFICATE AND DEDICATION
I, JAMES W. BAKER, COUNTY CLERK OF THE COUNTY OF CLATSOP, STATE OF OREGON, do hereby certify that the foregoing map of the Centennial Condominiums...

ACKNOWLEDGMENT
I, JAMES W. BAKER, COUNTY CLERK OF THE COUNTY OF CLATSOP, STATE OF OREGON, do hereby certify that the foregoing map of the Centennial Condominiums...

TITLE AGENCY APPROVALS
I, JAMES W. BAKER, COUNTY CLERK OF THE COUNTY OF CLATSOP, STATE OF OREGON, do hereby certify that the foregoing map of the Centennial Condominiums...

TITLE COMPANY CERTIFICATE
I, JAMES W. BAKER, COUNTY CLERK OF THE COUNTY OF CLATSOP, STATE OF OREGON, do hereby certify that the foregoing map of the Centennial Condominiums...

COUNTY RECORDER'S NOTE
I, JAMES W. BAKER, COUNTY CLERK OF THE COUNTY OF CLATSOP, STATE OF OREGON, do hereby certify that the foregoing map of the Centennial Condominiums...

SURVEYOR'S CERTIFICATE
I, JAMES W. BAKER, COUNTY CLERK OF THE COUNTY OF CLATSOP, STATE OF OREGON, do hereby certify that the foregoing map of the Centennial Condominiums...

CITY SURVEYOR'S CERTIFICATE
I, JAMES W. BAKER, COUNTY CLERK OF THE COUNTY OF CLATSOP, STATE OF OREGON, do hereby certify that the foregoing map of the Centennial Condominiums...

CERTIFICATE OF DIRECTOR OF PLANNING AND
I, JAMES W. BAKER, COUNTY CLERK OF THE COUNTY OF CLATSOP, STATE OF OREGON, do hereby certify that the foregoing map of the Centennial Condominiums...

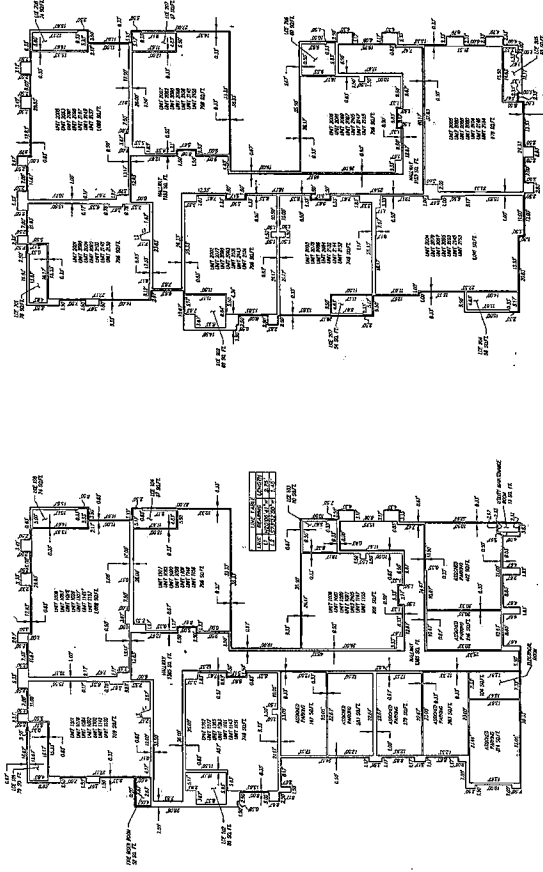
DISTRICT BOARD OF HEALTH CERTIFICATE
I, JAMES W. BAKER, COUNTY CLERK OF THE COUNTY OF CLATSOP, STATE OF OREGON, do hereby certify that the foregoing map of the Centennial Condominiums...

DIVISION OF WATER RESOURCES
I, JAMES W. BAKER, COUNTY CLERK OF THE COUNTY OF CLATSOP, STATE OF OREGON, do hereby certify that the foregoing map of the Centennial Condominiums...

FMP-26932
CENTENNIAL CONDOMINIUMS
DISTRICT BOARD OF HEALTH CERTIFICATE
DIVISION OF WATER RESOURCES

**FINAL MAP OF
CENTENNIAL CONDOMINIUMS**
BEING A PORTION OF THE NORTHWEST QUARTER 1/4 OF SECTION
26, TOWNSHIP 19 NORTH, RANGE 18 EAST, 104M, CITY OF LAS VEGAS, CLARK COUNTY, NEVADA

BUILDING #6 7, 8, 9, 10, 13, 14



FIRST FLOOR

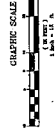
SECOND FLOOR

LEGEND:

- PARTIAL WALL
- EXTERIOR WALL
- WALL AND PARTITION
- WALL AND PARTITION (CYCLED)
- UNIT NUMBER PREFIX
- UNIT NUMBER

NOTES:

1. ALL ROOMS SHALL BE FINISHED TO MEASUREMENTS AND DIMENSIONS SHOWN ON THESE PLANS.
2. ALL ROOMS SHALL BE FINISHED TO MEASUREMENTS AND DIMENSIONS SHOWN ON THESE PLANS.
3. ALL ROOMS SHALL BE FINISHED TO MEASUREMENTS AND DIMENSIONS SHOWN ON THESE PLANS.
4. ALL ROOMS SHALL BE FINISHED TO MEASUREMENTS AND DIMENSIONS SHOWN ON THESE PLANS.
5. ALL ROOMS SHALL BE FINISHED TO MEASUREMENTS AND DIMENSIONS SHOWN ON THESE PLANS.
6. ALL ROOMS SHALL BE FINISHED TO MEASUREMENTS AND DIMENSIONS SHOWN ON THESE PLANS.
7. ALL ROOMS SHALL BE FINISHED TO MEASUREMENTS AND DIMENSIONS SHOWN ON THESE PLANS.
8. ALL ROOMS SHALL BE FINISHED TO MEASUREMENTS AND DIMENSIONS SHOWN ON THESE PLANS.
9. ALL ROOMS SHALL BE FINISHED TO MEASUREMENTS AND DIMENSIONS SHOWN ON THESE PLANS.
10. ALL ROOMS SHALL BE FINISHED TO MEASUREMENTS AND DIMENSIONS SHOWN ON THESE PLANS.
11. ALL ROOMS SHALL BE FINISHED TO MEASUREMENTS AND DIMENSIONS SHOWN ON THESE PLANS.
12. ALL ROOMS SHALL BE FINISHED TO MEASUREMENTS AND DIMENSIONS SHOWN ON THESE PLANS.
13. ALL ROOMS SHALL BE FINISHED TO MEASUREMENTS AND DIMENSIONS SHOWN ON THESE PLANS.
14. ALL ROOMS SHALL BE FINISHED TO MEASUREMENTS AND DIMENSIONS SHOWN ON THESE PLANS.
15. ALL ROOMS SHALL BE FINISHED TO MEASUREMENTS AND DIMENSIONS SHOWN ON THESE PLANS.
16. ALL ROOMS SHALL BE FINISHED TO MEASUREMENTS AND DIMENSIONS SHOWN ON THESE PLANS.
17. ALL ROOMS SHALL BE FINISHED TO MEASUREMENTS AND DIMENSIONS SHOWN ON THESE PLANS.
18. ALL ROOMS SHALL BE FINISHED TO MEASUREMENTS AND DIMENSIONS SHOWN ON THESE PLANS.
19. ALL ROOMS SHALL BE FINISHED TO MEASUREMENTS AND DIMENSIONS SHOWN ON THESE PLANS.
20. ALL ROOMS SHALL BE FINISHED TO MEASUREMENTS AND DIMENSIONS SHOWN ON THESE PLANS.



CCZ (000)

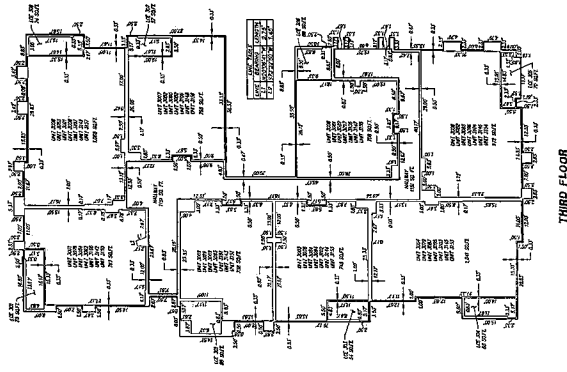
MARKY COMPANY ARCHITECT
DARYL HANSEN

02/11/2020

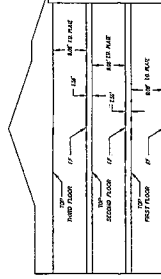
SHEET 5 OF 12

BUILDING #s 1, 7, 8, 9, 10, 13, 14

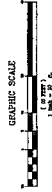
**FINAL MAP OF
CENTENNIAL CONDOMINIUMS**
BEING A PORTION OF THE NORTHWEST QUARTER 1/4 OF SECTION
26, TOWNSHIP 19 NORTH, RANGE 37 EAST, ADJ. CITY OF LAS VEGAS, CLARK COUNTY, NEVADA



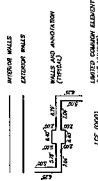
THIRD FLOOR



SECTION



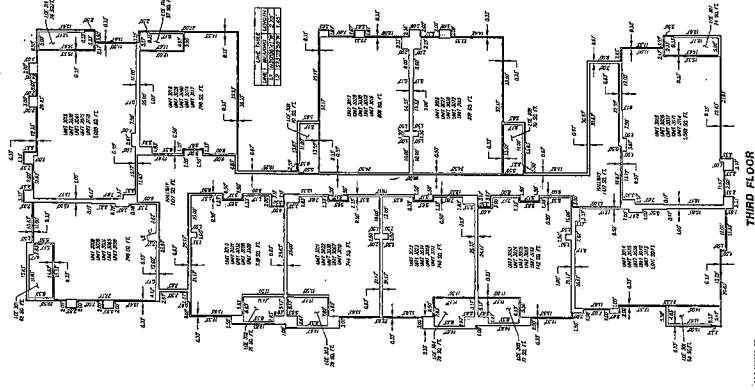
LEGEND:



NOTES:
1. ALL DIMENSIONS UNLESS OTHERWISE SPECIFIED ARE IN FEET AND INCHES.
2. ALL WALLS ARE 1/2\"/>

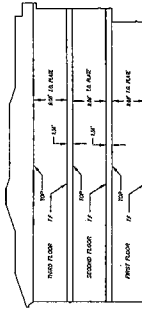
BUILDING # 2, 3, 4, 6, 11

FINAL MAP OF
CENTENNIAL CONDOMINIUMS
BEING A PORTION OF THE NORTHWEST QUARTER NW 34 OF THE NORTHWEST QUARTER NW 34 OF THE NORTHWEST QUARTER NW 1/4 OF SECTION
10, TOWNSHIP 19 SOUTH, RANGE 69 EAST, ADJ. TO CITY OF LAS VEGAS, CLARK COUNTY, NEVADA

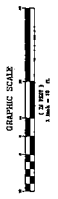


THIRD FLOOR

244 UNITS

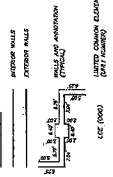


SECTION



GRAPHIC SCALE

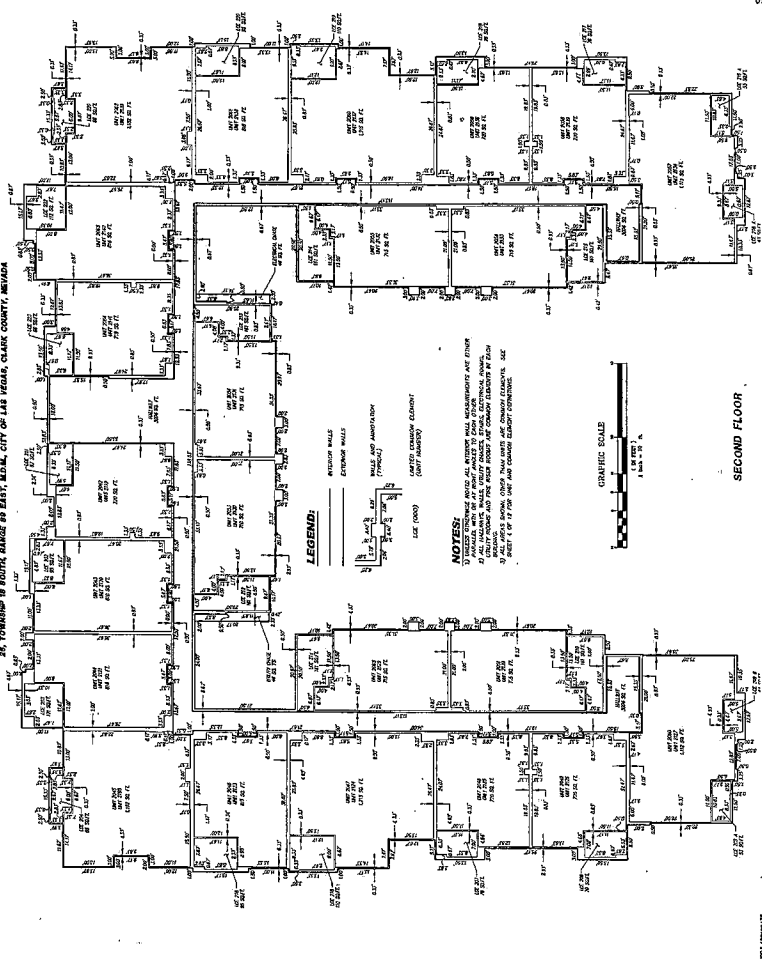
LEGEND



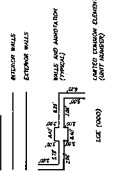
NOTES
1. ALL INTERIORS SHALL BE FINISHED WITH 1/2\"/>

BUILDING #6 5 AND 12

FINAL MAP OF
CENTENNIAL CONDOMINIUMS
BEING A PORTION OF THE NORTHWEST QUARTER AND 1/4 OF THE NORTHEAST QUARTER ONE (1) OF SECTION
25, TOWNSHIP 19 SOUTH, RANGE 99 EAST, MERID. 101, CITY OF LAS VEGAS, CLARK COUNTY, NEVADA



LEGEND:



NOTES:
1. ALL WALLS ARE TO BE CONCRETE OR CONCRETE BLOCK WITH INTERIOR FINISH.
2. ALL WALLS ARE TO BE FINISHED WITH GYP. BOARD WITH INTERIOR FINISH.
3. ALL WALLS SHALL BE FINISHED WITH GYP. BOARD WITH INTERIOR FINISH.
4. ALL WALLS SHALL BE FINISHED WITH GYP. BOARD WITH INTERIOR FINISH.
5. ALL WALLS SHALL BE FINISHED WITH GYP. BOARD WITH INTERIOR FINISH.

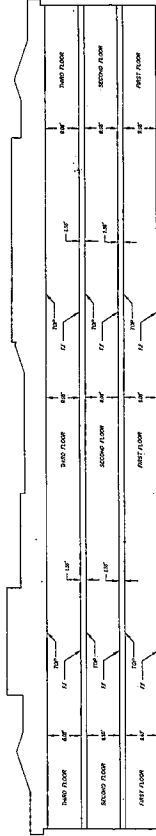


SECOND FLOOR

SHEET 10 OF 12

2024 (REVISED)

**FINAL MAP OF
CENTENNIAL CONDOMINIUMS**
 A COMMUNITY DEVELOPMENT PROJECT
 SITUATED IN THE CENTENNIAL QUARTER ONE 1/4 OF SECTION
 16, TOWNSHIP 19 SOUTH, RANGE 10 EAST, 123D E. CITY OF LAS VEGAS, CLARK COUNTY, NEVADA



SECTION



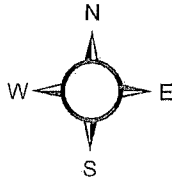
LEGEND:



NOTES:
 1. ALL WALLS SHALL BE CONCRETE UNLESS OTHERWISE NOTED.
 2. ALL FLOORS SHALL BE CONCRETE UNLESS OTHERWISE NOTED.
 3. ALL INTERIOR WALLS SHALL BE GYP. BOARD UNLESS OTHERWISE NOTED.
 4. ALL EXTERIOR WALLS SHALL BE CONCRETE UNLESS OTHERWISE NOTED.
 5. ALL FLOOR SLABS SHALL BE CONCRETE UNLESS OTHERWISE NOTED.
 6. ALL FLOOR SLABS SHALL BE 4" THICK UNLESS OTHERWISE NOTED.
 7. ALL FLOOR SLABS SHALL BE 12" ON CENTER UNLESS OTHERWISE NOTED.
 8. ALL FLOOR SLABS SHALL BE 12" ON CENTER UNLESS OTHERWISE NOTED.
 9. ALL FLOOR SLABS SHALL BE 12" ON CENTER UNLESS OTHERWISE NOTED.
 10. ALL FLOOR SLABS SHALL BE 12" ON CENTER UNLESS OTHERWISE NOTED.

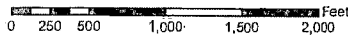
Centennial Condominiums

File Copy

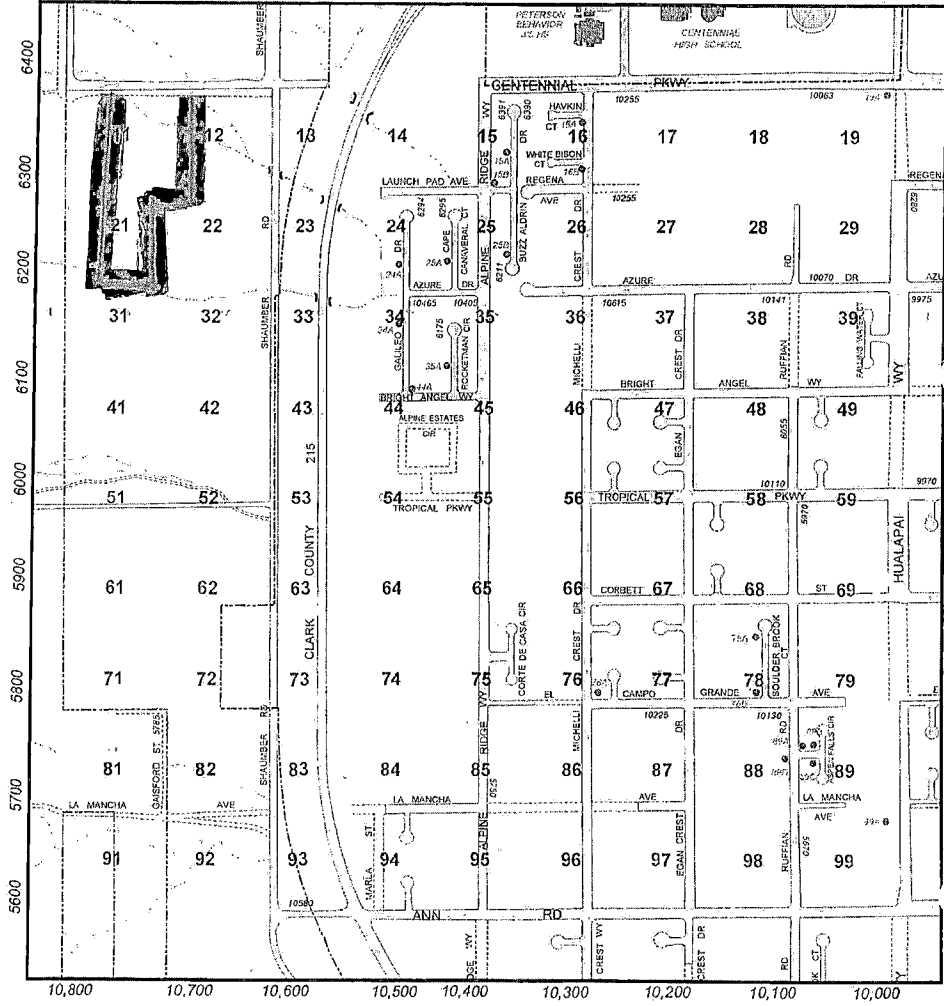


1614

© City of Las Vegas 10/25/07



1513	1514	1515
1613	1614	1615
1713	1714	1715



Receipt/Conformed Copy

Requestor:
STANTEC CONSULTING INC
11/26/2008 10:13:58 T20080292241
Book/Instr: 20081126-0001566
Cert Amend Plat Page Count: 2
Fees: \$15.00 N/C Fee: \$0.00

*File
Copy*

November 17, 2008
188100435

Mr. Alan Riecki, P.L.S.
City Surveyor
City of Las Vegas
3001 Ronemus Drive
Las Vegas, NV 89128

Debbie Conway
Clark County Recorder

CERTIFICATE OF AMENDMENT

**DOCUMENT: Final Map of Centennial Condominiums, a Common Interest
Condominium Subdivision
Book 141, Page 13 of Plats (FMP-26932)**

LEGAL DESCRIPTION:

Located in a portion of the Northwest Quarter (NW ¼) of the Northwest Quarter (NW ¼) of
Section 25, Township 19 South, Range 59 east, M.D.M., City of Las Vegas, Clark County,
Nevada.

RECORDING DATE: October 24, 2008

Dear Mr. Riecki:

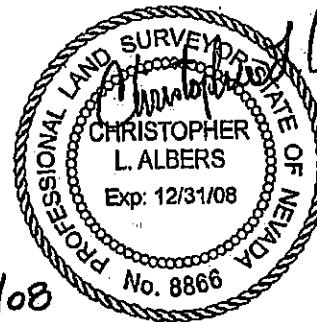
The building numbers shown on Sheet 3 of the above referenced Plat of Centennial
Condominiums, a Common Interest Condominium Subdivision, are incorrectly labeled and
should be changed to match the building numbers as shown on Sheet 4 of the Plat.

This certificate of amendment does not move or alter any platted line or move any survey
monument. This document supersedes the original recorded document.

Sincerely,

STANTEC CONSULTING LTD.

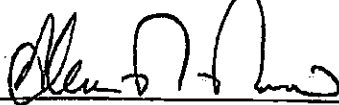
Christopher L. Albers
Professional Land Surveyor
Nevada License No. 8866



188100435

**Certificate of Amendment for
Centennial Condominiums, a Common Interest Condominium Subdivision
Book 141, Page 13 of Plats (FMP-26932)
Recorded October 24, 2008**

I hereby certify that I have examined the Certificate of Amendment and that the changes to the original document specified therein are provided for in applicable sections of NRS 278.010 to 278.630, inclusive, NRS 625.340 to 625.380, inclusive, and local ordinances adopted pursuant thereto, and I am satisfied that this Certificate of Amendment so amends or corrects the document as to make it technically correct.

 11/20/08
Alan Riecki, P.L.S.
City of Las Vegas Surveyor
Nevada Certificate No. 12469

When recorded return to:
Stantec Consulting, Inc.
7450 Arroyo Crossing Parkway, Suite 100
Las Vegas, NV 89113