

OAK KNOLL

Recorded in Book 79 Page 40 of Plats

200 Scale Map Location: K-25-7: 36-1

Fire Dept. District Map # 2414:12,13 2314: 92,93

MASTER SITE ADDRESS: 10661 GREENMOOR LN

BLOCK 1	LOT	1	10700	AIRE DR	E/W	PUBLIC STREET
		2	10708			
		3	10712			
		4	10716			
		5	10720			
		6	10724			
		7	10728			
		8	10732			
		9	10800			
		10	10804			
		11	10808			
		12	10812			
BLOCK 1	LOT	13	153	DERWENT PL	N/S	PUBLIC STREET
		14	157			
		15	161			
		16	165			
		17	169			
		18	201			
		19	205			
		20	209			
		21	213			
BLOCK 1	LOT	22	10737	ESK DR	E/W	PUBLIC STREET
		23	10733			
		24	10729			
		25	10725			
		28	10721			
		27	10717			
		28	10713			
		29	10709			
		30	10705			
		31	10701			
		32	10637			
		33	10633			
		34	10629			
BLOCK 2	LOT	1	10649	DART DR	E/W	PUBLIC STREET
		2	10645			
		3	10641			
		4	10637			
		5	10633			
		6	10629			
		7	10625			
BLOCK 2	LOT	8	10620	ESK DR	E/W	PUBLIC STREET
		9	10624			
		10	10628			
		11	10632			
		12	10636			
		13	10640			
BLOCK 2	LOT	14	168	NENE CT	N/S	PUBLIC STREET
		15	164			

OAK KNOLL

BLOCK 2	LOT	16	160	NENE CT	N/S	PUBLIC STREET
		17	161			
		18	165			
BLOCK 2	LOT	19	10708	ESK DR	E/W	PUBLIC STREET
		20	10712			
		21	10716			
BLOCK 2	LOT	22	168	KENNET CT	N/S	PUBLIC STREET
		23	160			
		24	161			
		25	165			
		26	169			
BLOCK 2	LOT	27	10724	ESK DR	E/W	PUBLIC STREET
		28	10728			
		29	10732			
BLOCK 2	LOT	30	204	DERWENT PL	N/S	PUBLIC STREET
		31	200			
		32	168			
		33	164			
		34	160			
BLOCK 2	LOT	35	10801	AIRE OR	E/W	PUBLIC STREET
		36	10733			
		37	10729			
		38	10725			
		39	10721			
		40	10717			
		41	10713			
		42	10709			
		43	10705			
		44	10701			
BLOCK 3	LOT	1	10664			
		2	10660			
		3	10658			
		4	10652			
		5	10648			
		6	10644			
		7	10640			
BLOCK 3	LOT	8	10632	TYNE PL	E/W	PUBLIC STREET
		9	10628			
		10	10624			
		11	10620			
		12	10616			
		13	10612			
		14	10608			
		15	10604			
		16	10600			
BLOCK 3	LOT	17	144	SWALE LN	N/S	PUBLIC STREET
		18	148			
		19	152			

OAK KNOLL

BLOCK 3	LOT	20	156	SWALE LN	N/S	PUBLIC STREET
		21	160			
		22	164			
		23	200			
		24	204			
		25	208			
		26	212			
		27	216			
BLOCK 3	LOT	28	10601	ESK DR	EW	PUBLIC STREET
		29	10605			
		30	10609			
		31	10613			
		32	10617			
		33	10621			
BLOCK 4	LOT	1	10640	DART DR	EW	PUBLIC STREET
BLOCK 4	LOT	2	10661	AIRE DR	EW	PUBLIC STREET
		3	10657			
		4	10653			
		5	10649			
		6	10645			
BLOCK 4	LOT	7	10625	TYNE PL	EW	PUBLIC STREET
		8	10621			
		9	10617			
BLOCK 4	LOT	10	153	WELLAND CT	N/S	PUBLIC STREET
		11	172			
		12	168			
		13	164			
		14	160			
		15	156			
		16	152			
BLOCK 4	LOT	17	10609	TYNE PL	EW	PUBLIC STREET
		18	10605			
		19	10601			
BLOCK 4	LOT	20	153	SWALE LN	N/S	PUBLIC STREET
		21	157			
		22	161			
		23	165			
		24	201			
		25	205			
		26	209			
		27	213			
BLOCK 4	LOT	28	212	STOUR LN	N/S	PUBLIC STREET
		29	208			
		30	204			
		31	200			
BLOCK 4	LOT	32	10620	DART DR	EW	PUBLIC STREET
		33	10624			

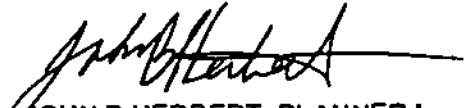
OAK KNOLL

BLOCK 4	LOT	34	10628	DART DR	E/W	PUBLIC STREET
		35	10632			
		36	10636			
Common Area	A		10658	DART DR	E/W	PUBLIC STREET
	B		10650			
	C		10654			
	D		10655			
Common Area	E		10665	AIRE DR (PARK SITE)	E/W	PUBLIC STREET
Common Area	G		207	DERWENT PL	N/S	PUBLIC STREET
Common Area	H		10802	AIRE DR	E/W	PUBLIC STREET

Streets without addresses: ~~HUSITE DRIVE~~ and IVY ARBOR LANE
(N/S) PAVILION CENTER DR

ORIGINAL DATE: 5/2/1997

CITY OF LAS VEGAS
PLANNING & DEVELOPMENT DEPARTMENT



JOHN B HERBERT, PLANNER I

910-502

01108

OAK KNOLL
 BEING LOT 7, BLOCK C OF THE ARBORS AT SUMMERHILL VILLAGE 11/18 UNIT NO. 2A, BLOCK 7B, PAGE 79)
 LOCATED WITHIN THE SOUTHWEST QUARTER (SW 1/4) OF SECTION 25, AND THE NORTHEAST QUARTER (NE 1/4)
 OF SECTION 26, TOWNSHIP 20 SOUTH, RANGE 99 EAST, M.D.M., CITY OF LAS VEGAS, CLARK COUNTY, NEVADA.
 (A COMMON INTEREST COMMUNITY)

RESTROOM



GRAPHIC SCALE



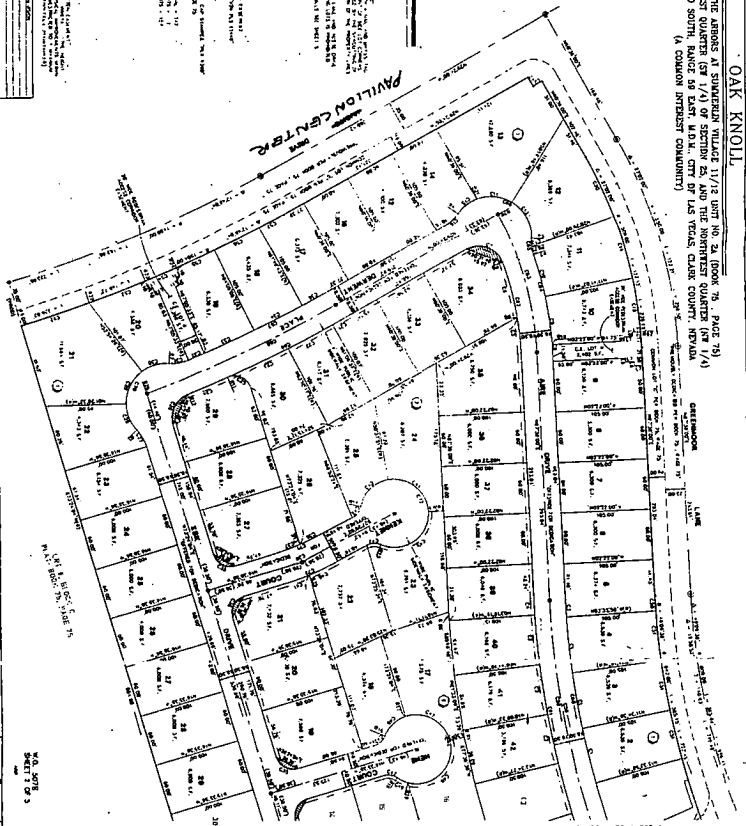
NOTES

1. THIS PLAN IS THE PROPERTY OF THE ARCHITECT AND IS TO BE USED ONLY FOR THE PROJECT AND SITE SPECIFICALLY IDENTIFIED HEREON.
 2. THE ARCHITECT ASSUMES NO LIABILITY FOR THE ACCURACY OF THE INFORMATION PROVIDED BY THE CLIENT.
 3. THE ARCHITECT ASSUMES NO LIABILITY FOR THE ACCURACY OF THE INFORMATION PROVIDED BY THE CLIENT.
 4. THE ARCHITECT ASSUMES NO LIABILITY FOR THE ACCURACY OF THE INFORMATION PROVIDED BY THE CLIENT.

LEGEND

- 1. CONCRETE
- 2. ASPHALT
- 3. GRAVEL
- 4. SAND
- 5. SOIL
- 6. EXISTING CONCRETE
- 7. EXISTING ASPHALT
- 8. EXISTING GRAVEL
- 9. EXISTING SAND
- 10. EXISTING SOIL
- 11. EXISTING CONCRETE
- 12. EXISTING ASPHALT
- 13. EXISTING GRAVEL
- 14. EXISTING SAND
- 15. EXISTING SOIL
- 16. EXISTING CONCRETE
- 17. EXISTING ASPHALT
- 18. EXISTING GRAVEL
- 19. EXISTING SAND
- 20. EXISTING SOIL
- 21. EXISTING CONCRETE
- 22. EXISTING ASPHALT
- 23. EXISTING GRAVEL
- 24. EXISTING SAND
- 25. EXISTING SOIL
- 26. EXISTING CONCRETE
- 27. EXISTING ASPHALT
- 28. EXISTING GRAVEL
- 29. EXISTING SAND
- 30. EXISTING SOIL
- 31. EXISTING CONCRETE
- 32. EXISTING ASPHALT
- 33. EXISTING GRAVEL
- 34. EXISTING SAND
- 35. EXISTING SOIL
- 36. EXISTING CONCRETE
- 37. EXISTING ASPHALT
- 38. EXISTING GRAVEL
- 39. EXISTING SAND
- 40. EXISTING SOIL
- 41. EXISTING CONCRETE
- 42. EXISTING ASPHALT
- 43. EXISTING GRAVEL
- 44. EXISTING SAND
- 45. EXISTING SOIL
- 46. EXISTING CONCRETE
- 47. EXISTING ASPHALT
- 48. EXISTING GRAVEL
- 49. EXISTING SAND
- 50. EXISTING SOIL
- 51. EXISTING CONCRETE
- 52. EXISTING ASPHALT
- 53. EXISTING GRAVEL
- 54. EXISTING SAND
- 55. EXISTING SOIL
- 56. EXISTING CONCRETE
- 57. EXISTING ASPHALT
- 58. EXISTING GRAVEL
- 59. EXISTING SAND
- 60. EXISTING SOIL
- 61. EXISTING CONCRETE
- 62. EXISTING ASPHALT
- 63. EXISTING GRAVEL
- 64. EXISTING SAND
- 65. EXISTING SOIL
- 66. EXISTING CONCRETE
- 67. EXISTING ASPHALT
- 68. EXISTING GRAVEL
- 69. EXISTING SAND
- 70. EXISTING SOIL
- 71. EXISTING CONCRETE
- 72. EXISTING ASPHALT
- 73. EXISTING GRAVEL
- 74. EXISTING SAND
- 75. EXISTING SOIL
- 76. EXISTING CONCRETE
- 77. EXISTING ASPHALT
- 78. EXISTING GRAVEL
- 79. EXISTING SAND
- 80. EXISTING SOIL
- 81. EXISTING CONCRETE
- 82. EXISTING ASPHALT
- 83. EXISTING GRAVEL
- 84. EXISTING SAND
- 85. EXISTING SOIL
- 86. EXISTING CONCRETE
- 87. EXISTING ASPHALT
- 88. EXISTING GRAVEL
- 89. EXISTING SAND
- 90. EXISTING SOIL
- 91. EXISTING CONCRETE
- 92. EXISTING ASPHALT
- 93. EXISTING GRAVEL
- 94. EXISTING SAND
- 95. EXISTING SOIL
- 96. EXISTING CONCRETE
- 97. EXISTING ASPHALT
- 98. EXISTING GRAVEL
- 99. EXISTING SAND
- 100. EXISTING SOIL

PAVILION CENTER



FOR CONTINUATION OF THIS AREA SEE SHEET 1

FOR CONTINUATION OF THIS AREA SEE SHEET 3

PLAN 79 BROW 40

NO. 3075 SHEET 2 OF 3

AD502

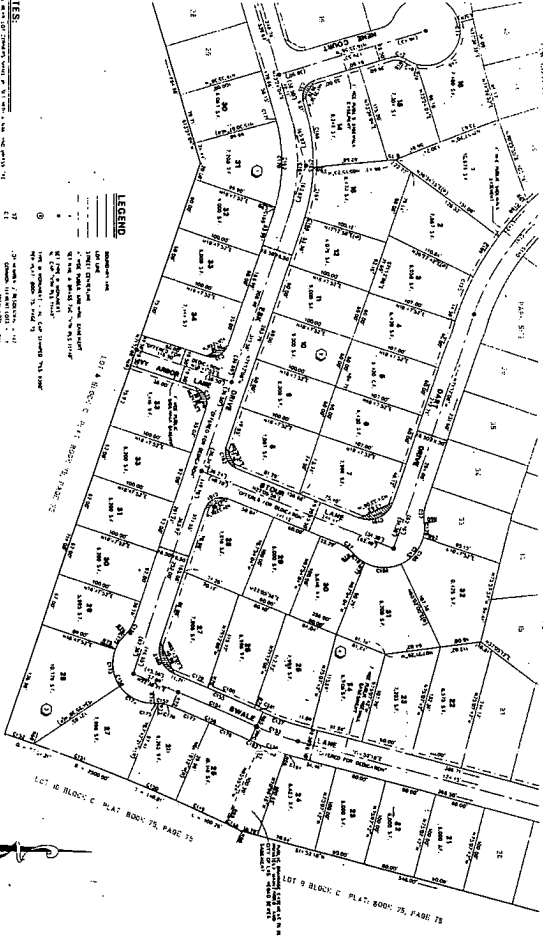
OAK KNOLL

OMR

BEING LOT 7, BLOCK C OF THE ABERNS AT SUMMERBURN VILLAGE 11/12 UNIT NO. 2A (BOOK 75, PAGE 75)
 LOCATED WITHIN THE SOUTHWEST QUARTER (SW 1/4) OF SECTION 25, AND THE NORTHWEST QUARTER (NW 1/4) OF SECTION 36,
 TOWNSHIP 20 SOUTH, RANGE 38 EAST, N.O.W. CITY OF LAS VEGAS, CLARK COUNTY, NEVADA.
 (A COMMON INTEREST COMMUNITY)

FOR CONTINUATION OF THIS AREA SEE SHEET 3

FOR CONTINUATION OF THIS AREA SEE SHEET 2



LEGEND

- 12" utility easement
- 6" utility easement
- 4" utility easement
- 2" utility easement
- 1" utility easement
- 1/2" utility easement
- 1/4" utility easement
- 1/8" utility easement
- 1/16" utility easement
- 1/32" utility easement
- 1/64" utility easement
- 1/128" utility easement
- 1/256" utility easement
- 1/512" utility easement
- 1/1024" utility easement
- 1/2048" utility easement
- 1/4096" utility easement
- 1/8192" utility easement
- 1/16384" utility easement
- 1/32768" utility easement
- 1/65536" utility easement
- 1/131072" utility easement
- 1/262144" utility easement
- 1/524288" utility easement
- 1/1048576" utility easement
- 1/2097152" utility easement
- 1/4194304" utility easement
- 1/8388608" utility easement
- 1/16777216" utility easement
- 1/33554432" utility easement
- 1/67108864" utility easement
- 1/134217728" utility easement
- 1/268435456" utility easement
- 1/536870912" utility easement
- 1/1073741824" utility easement
- 1/2147483648" utility easement
- 1/4294967296" utility easement
- 1/8589934592" utility easement
- 1/17179869184" utility easement
- 1/34359738368" utility easement
- 1/68719476736" utility easement
- 1/137438953472" utility easement
- 1/274877906944" utility easement
- 1/549755813888" utility easement
- 1/1099511627776" utility easement
- 1/2199023255552" utility easement
- 1/4398046511104" utility easement
- 1/8796093022208" utility easement
- 1/17592186044416" utility easement
- 1/35184372088832" utility easement
- 1/70368744177664" utility easement
- 1/140737488355328" utility easement
- 1/281474976710656" utility easement
- 1/562949953421312" utility easement
- 1/1125899906842624" utility easement
- 1/2251799813685248" utility easement
- 1/4503599627370496" utility easement
- 1/9007199254740992" utility easement
- 1/18014398509481984" utility easement
- 1/36028797018963968" utility easement
- 1/72057594037927936" utility easement
- 1/14411518807585584" utility easement
- 1/28823037615171168" utility easement
- 1/57646075230342336" utility easement
- 1/115292150460684672" utility easement
- 1/230584300921369344" utility easement
- 1/461168601842738688" utility easement
- 1/922337203685477376" utility easement
- 1/1844674407370954752" utility easement
- 1/3689348814741909504" utility easement
- 1/7378697629483819008" utility easement
- 1/14757395258967638016" utility easement
- 1/29514790517935276032" utility easement
- 1/59029581035870552064" utility easement
- 1/118059162071741104128" utility easement
- 1/236118324143482208256" utility easement
- 1/472236648286964416512" utility easement
- 1/944473296573928832024" utility easement
- 1/1888946593147857664048" utility easement
- 1/3777893186295715328096" utility easement
- 1/7555786372591430656192" utility easement
- 1/15111572745182861312384" utility easement
- 1/30223145490365722624672" utility easement
- 1/60446290980731445249344" utility easement
- 1/120892581961462890498688" utility easement
- 1/241785163922925780997376" utility easement
- 1/483570327845851561994752" utility easement
- 1/967140655691703123989504" utility easement
- 1/1934281311383406247979008" utility easement
- 1/3868562622766812495958016" utility easement
- 1/7737125245533624991916032" utility easement
- 1/15474250491067249938320064" utility easement
- 1/30948500982134499876640128" utility easement
- 1/61897001964268999753280256" utility easement
- 1/123794003928537999506560512" utility easement
- 1/2475880078570759990131201024" utility easement
- 1/4951760157141519980262402048" utility easement
- 1/9903520314283039960524804096" utility easement
- 1/198070406285660799210489608192" utility easement
- 1/396140812571321598420979216384" utility easement
- 1/792281625142643196841958432768" utility easement
- 1/1584563250285286393683916865536" utility easement
- 1/3169126500570572787367833731072" utility easement
- 1/6338253001141145574735667462144" utility easement
- 1/12676506002282291148467133524288" utility easement
- 1/25353012004564582296934267048576" utility easement
- 1/50706024009129164593868534097152" utility easement
- 1/101412048018258329187737068194304" utility easement
- 1/202824096036516658375474136388608" utility easement
- 1/405648192073033316751148272777216" utility easement
- 1/811296384146066633502296545554432" utility easement
- 1/1622592768321333270004530891108864" utility easement
- 1/3245185536642666540009061782217728" utility easement
- 1/6490371073285333080018123564435456" utility easement
- 1/129807421457066601600362471287091104" utility easement
- 1/259614842914133203200724942574182208" utility easement
- 1/5192296858282664064001449851483644416" utility easement
- 1/10384593716565328128002897002967288832" utility easement
- 1/2076918743313065625600579400593457766752" utility easement
- 1/4153837486626131251201158880118695553504" utility easement
- 1/8307674973252262502402377600237391107008" utility easement
- 1/166153499465045250448047552004747822141184" utility easement
- 1/332306998930090500896095104009495644282368" utility easement
- 1/66461399786018100179219020801899128564474752" utility easement
- 1/13292279957203620035843804160379825112894944" utility easement
- 1/2658455991440724007168760832075975022579888" utility easement
- 1/531691198288144801433732166415195004515577776" utility easement
- 1/10633823965762896286676433283039000903115555552" utility easement
- 1/21267647931525792573332866566078001806231111104" utility easement
- 1/42535295863051584146665733132156003612412222008" utility easement
- 1/85070591726103168293331466664252007224824444416" utility easement
- 1/17014118345220633658666293264504001444848888832" utility easement
- 1/340282366904412673173325813280080028896977776" utility easement
- 1/680564733808825346346651656561600577939555552" utility easement
- 1/136112946761765069269323331328011398791111104" utility easement
- 1/272225893523530138538646662656022775782222008" utility easement
- 1/54445178704706027707729333132804555554444416" utility easement
- 1/108890357409412054415445866653120911111104" utility easement
- 1/21778071481882410883089133266241822222008" utility easement
- 1/435561429637648217661777865324364444416" utility easement
- 1/87112285927529643533557313280888888832" utility easement
- 1/17422457185059287067111466664777776" utility easement
- 1/3484491437011857413422293331328155555552" utility easement
- 1/696898287402371482684576666531231111104" utility easement
- 1/13937965748047429537691332662462222008" utility easement
- 1/2787593149609485907538266532412444416" utility easement
- 1/55751862992189718150765313280488888832" utility easement
- 1/111503725984379363011510666877776" utility easement
- 1/22300745196875872602302133266155555552" utility easement
- 1/4460149039375174524604026653231111104" utility easement
- 1/8920298078750349049208053132822222008" utility easement
- 1/17840596157500690984416106664444416" utility easement
- 1/3568119231500137816883221332668888832" utility easement
- 1/71362384630002756337664426653177776" utility easement
- 1/1427247692600055126753289331328155555552" utility easement
- 1/28544953852001102535065616666277776" utility easement
- 1/5708990770400220507013133266531111104" utility easement
- 1/114179815408004401402262665322222008" utility easement
- 1/228359630816008802804525313284444416" utility easement
- 1/4567192616320176056090506653288888832" utility easement
- 1/9134385232640352112181810666877776" utility easement
- 1/1826877046528070422363632133266155555552" utility easement
- 1/36537540930561408472712626653231111104" utility easement
- 1/73075081861122801744545253132822222008" utility easement
- 1/1461501637222456034889050665324444416" utility easement
- 1/2923003274444912069778010666877776" utility easement
- 1/584600654888982413955602133266155555552" utility easement
- 1/1169201309777964827111210666877776" utility easement
- 1/2338402619555929654222226653231111104" utility easement
- 1/467680523911185930844445253132822222008" utility easement
- 1/935361047822371861688889050665324444416" utility easement
- 1/187072209564473722337778010666877776" utility easement
- 1/3741444191289474446755602133266155555552" utility easement
- 1/7482888382578948893511210666877776" utility easement
- 1/14965776761158977787022226653231111104" utility easement
- 1/2993155352231795557404445253132822222008" utility easement
- 1/598631070446359111480889050665324444416" utility easement
- 1/119726214089278222876178010666877776" utility easement
- 1/23945242817255644575235602133266155555552" utility easement
- 1/47890485634511288950471210666877776" utility easement
- 1/9578097126902257790094445253132822222008" utility easement
- 1/191561942538045155801889050665324444416" utility easement
- 1/3831238850760903116003778010666877776" utility easement
- 1/766247770152180623200755602133266155555552" utility easement
- 1/15324955403043612440015110666877776" utility easement
- 1/30649910806087224880030226653231111104" utility easement
- 1/6129982161217444976006045253132822222008" utility easement
- 1/1225996422434889952001209050665324444416" utility easement
- 1/2451992844869779904002418010666877776" utility easement
- 1/490398568973955980800483602133266155555552" utility easement
- 1/9807971379479119616009672053132822222008" utility easement
- 1/19615942758958239232001934050665324444416" utility easement
- 1/39231885517916478464003868010666877776" utility easement
- 1/7846377103583295692800773602133266155555552" utility easement
- 1/15692754207165913885601546045253132822222008" utility easement
- 1/31385508414321837771209050665324444416" utility easement
- 1/6277101682864367554241810666877776" utility easement
- 1/125542033673273550848362053132822222008" utility easement
- 1/25108406734654710169767205313284444416" utility easement
- 1/502168134693094203395344050665324444416" utility easement
- 1/1004336269386188406790688010666877776" utility easement
- 1/200867253877237681358177602133266155555552" utility easement
- 1/4017345077544753627163536045253132822222008" utility easement
- 1/803469015508950725432707205313284444416" utility easement
- 1/1606938031017901450865414050665324444416" utility easement
- 1/321387606203580290173083010666877776" utility easement
- 1/64277521240716058034616602133266155555552" utility easement
- 1/128555042481421160069232053132822222008" utility easement
- 1/257110084962842320138448050665324444416" utility easement
- 1/514220169925684640276896010666877776" utility easement
- 1/102844033971369280055379205313284444416" utility easement
- 1/20568806794273856011071584050665324444416" utility easement
- 1/4113761358854771202214368010666877776" utility easement
- 1/822752271770954240442873602133266155555552" utility easement
- 1/16455045435419084808857472053132822222008" utility easement
- 1/32910090870838169617714944050665324444416" utility easement
- 1/6582018174167633923542888010666877776" utility easement
- 1/1316403634833526784708577602133266155555552" utility easement
- 1/263280726966705356941715536045253132822222008" utility easement
- 1/5265614539334107138824307205313284444416" utility easement
- 1/10531229078668214776646614050665324444416" utility easement
- 1/21062458157336429553293205313284444416" utility easement
- 1/421249163146728491065864050665324444416" utility easement
- 1/842498326293456982131728050665324444416" utility easement
- 1/1684996652786913942263456050665324444416" utility easement
- 1/3369993305573827884526912050665324444416" utility easement
- 1/6739986611147655769053824050665324444416" utility easement
- 1/13479973222295315378107648050665324444416" utility easement
- 1/26959946444590630756215296050665324444416" utility easement
- 1/53919892889181261512430592050665324444416" utility easement
- 1/10783978577836252302486016050665324444416" utility easement
- 1/21567957155672504604972032050665324444416" utility easement
- 1/43135914311345009209944064050665324444416" utility easement
- 1/862718282226900184198880128050665324444416" utility easement
- 1/1725436564533800368397760256050665324444416" utility easement
- 1/3450873129067600736795520512050665324444416" utility easement
- 1/69017462581352014735910401024050665324444416" utility easement
- 1/138034925162704029471820802048050665324444416" utility easement
- 1/276069850325408058943641604096050665324444416" utility easement
- 1/552139700650816117887283208192050665324444416" utility easement
- 1/110427940130163223777566416384050665324444416" utility easement
- 1/220855880260326447555132832768050665324444416" utility easement
- 1/44171176052065289511026565536050665324444416" utility easement
- 1/8834235210413057902205313287168050665324444416" utility easement
- 1/1766847042082611804401066627136050665324444416" utility easement
- 1/3533694084165223608802133261472050665324444416" utility easement
- 1/70673881683304472176042662704050665324444416" utility easement
- 1/14134776366660894435208532536050665324444416" utility easement
- 1/28269552733321788870417066532704050665324444416" utility easement
- 1/56539105466643577740834133266532704050665324444416" utility easement
- 1/1130782109332871548816666866532704050665324444416" utility easement
- 1/226156421866574309763333333266532704050665324444416" utility easement
- 1/452312843733148619552666666532704050665324444416" utility easement
- 1/904625687466297239105333333266532704050665324444416" utility easement
- 1/180925137493259447821066666532704050665324444416" utility easement
- 1/361850274986518895642133266532704050665324444416" utility easement
- 1/723700549973037791284266666532704050665324444416" utility easement
- 1/144740109994607582256533333266532704050665324444416" utility easement
- 1/289480219989215164513066666532704050665324444416" utility easement
- 1/578960439978430329027133266532704050665324444416" utility easement
- 1/115792087956686065805426666532704050665324444416" utility easement
- 1/231584175913372131610866666532704050665324444416" utility easement
- 1/463168351826744263221733266532704050665324444416" utility easement
- 1/926336703653488526443466666532704050665324444416" utility easement
- 1/18526734073069775288869333266532704050665324444416" utility easement
- 1/3705346814613955057773866665327040506653244

OAK KNOLL

Recorded in Book 79 Page 40 of Plats

200 Scale Map Location: K-25-7; 36-1

Fire Dept. District Map # 2414:12,13 2314: 92,93

MASTER SITE ADDRESS: 10661 GREENMOOR LN

BLOCK 1	LOT	1	10700	AIRE DR	E/W	PUBLIC STREET
		2	10708			
		3	10712			
		4	10716			
		5	10720			
		6	10724			
		7	10728			
		8	10732			
		9	10800			
		10	10804			
		11	10808			
		12	10812			
BLOCK 1	LOT	13	153	DERWENT PL	N/S	PUBLIC STREET
		14	157			
		15	161			
		16	165			
		17	169			
		18	201			
		19	205			
		20	209			
		21	213			
BLOCK 1	LOT	22	10737	ESK DR	E/W	PUBLIC STREET
		23	10733			
		24	10729			
		25	10725			
		26	10721			
		27	10717			
		28	10713			
		29	10709			
		30	10705			
		31	10701			
		32	10637			
		33	10633			
		34	10629			
BLOCK 2	LOT	1	10649	DART DR	E/W	PUBLIC STREET
		2	10645			
		3	10641			
		4	10637			
		5	10633			
		6	10629			
		7	10625			
BLOCK 2	LOT	8	10620	ESK DR	E/W	PUBLIC STREET
		9	10624			
		10	10628			
		11	10632			
		12	10636			
		13	10640			
BLOCK 2	LOT	14	168	NENE CT	N/S	PUBLIC STREET
		15	164			

OAK KNOLL

BLOCK 2	LOT	16	160	NENE CT	N/S	PUBLIC STREET
		17	161			
		18	165			
BLOCK 2	LOT	19	10708	ESK DR	E/W	PUBLIC STREET
		20	10712			
		21	10716			
BLOCK 2	LOT	22	168	KENNET CT	N/S	PUBLIC STREET
		23	160			
		24	161			
		25	165			
		26	169			
BLOCK 2	LOT	27	10724	ESK DR	E/W	PUBLIC STREET
		28	10728			
		29	10732			
BLOCK 2	LOT	30	204	DERWENT PL	N/S	PUBLIC STREET
		31	200			
		32	168			
		33	164			
		34	160			
BLOCK 2	LOT	35	10801	AIRE DR	E/W	PUBLIC STREET
		36	10733			
		37	10729			
		38	10725			
		39	10721			
		40	10717			
		41	10713			
		42	10709			
		43	10705			
		44	10701			
BLOCK 3	LOT	1	10664	AIRE DR	E/W	PUBLIC STREET
		2	10660			
		3	10656			
		4	10652			
		5	10648			
		6	10644			
		7	10640			
BLOCK 3	LOT	8	10632	TYNE PL	E/W	PUBLIC STREET
		9	10628			
		10	10624			
		11	10620			
		12	10616			
		13	10612			
		14	10608			
		15	10604			
		16	10600			
BLOCK 3	LOT	17	144	SWALE LN	N/S	PUBLIC STREET
		18	148			
		19	152			

OAK KNOLL

BLOCK 3	LOT	20	156	SWALE LN	N/S	PUBLIC STREET
		21	160			
		22	164			
		23	200			
		24	204			
		25	208			
		26	212			
		27	216			
BLOCK 3	LOT	28	10601	ESK DR	E/W	PUBLIC STREET
		29	10605			
		30	10609			
		31	10613			
		32	10617			
		33	10621			
BLOCK 4	LOT	1	10640	DART DR	E/W	PUBLIC STREET
BLOCK 4	LOT	2	10661	AIRE DR	E/W	PUBLIC STREET
		3	10657			
		4	10653			
		5	10649			
		6	10645			
BLOCK 4	LOT	7	10625	TYNE PL	E/W	PUBLIC STREET
		8	10621			
		9	10617			
BLOCK 4	LOT	10	153	WELLAND CT	N/S	PUBLIC STREET
		11	172			
		12	168			
		13	164			
		14	160			
		15	156			
		16	152			
BLOCK 4	LOT	17	10609	TYNE PL	E/W	PUBLIC STREET
		18	10605			
		19	10601			
BLOCK 4	LOT	20	153	SWALE LN	N/S	PUBLIC STREET
		21	157			
		22	161			
		23	165			
		24	201			
		25	205			
		26	209			
		27	213			
BLOCK 4	LOT	28	212	STOUR LN	N/S	PUBLIC STREET
		29	208			
		30	204			
		31	200			
BLOCK 4	LOT	32	10620	DART DR	E/W	PUBLIC STREET
		33	10624			


OAK KNOLL

BLOCK 4	LOT	34	10628	DART DR	E/W	PUBLIC STREET
		35	10632			
		36	10636			
Common Area	A		10658	DART DR	E/W	PUBLIC STREET
	B		10650			
	C		10654			
	D		10655			
Common Area	E		10665	AIRE DR (PARK SITE)	E/W	PUBLIC STREET
Common Area	G		207	DERWENT PL	N/S	PUBLIC STREET
Common Area	H		10802	AIRE DR	E/W	PUBLIC STREET

Streets without addresses: ~~HUSHE DRIVE~~ and IVY ARBOR LANE
(N/S) PAVILION CENTER DR

ORIGINAL DATE: 5/2/1997

CITY OF LAS VEGAS
PLANNING & DEVELOPMENT DEPARTMENT



JOHN B HERBERT, PLANNER I

COPY

ORDER OF STREET NAME CHANGE

A petition, dated the 10th day of February, 1997, signed by an abutting property owner on the streets affected thereby, having been filed with the Secretary of the Planning Commission of the City of Las Vegas, Nevada, petitioning for a change of name of the streets hereinafter described, and said petition having been submitted to the City Planning Commission for its recommendation, and said Planning Commission having filed its report with said Council approving and recommending such change of street name;

And said Council, at its regular meeting held on the 14th day of April, 1997, having set the 28th day of April, 1997, at the hour of 2:00 p.m., at the Council Chambers of the City Hall, 400 East Stewart Avenue, Las Vegas, County of Clark, Nevada, as the date, time and place for a public hearing on said petition and recommendation, and the City having undertaken to notify by registered mail each owner of property abutting the area proposed for such street name changes and to cause a notice to be published at least once in a newspaper of general circulation in the City setting forth the time and place of the public hearing and the extent of the proposed street name changes;

And it appearing from the Affidavit of Mailing and the Affidavit of Publication filed with the City Clerk, that notices were mailed on the 15th day of April, 1997, and the notice of hearing was published on the 17th day of April, 1997:

And the City Council, on the 28th day of April, 1997, having held a public hearing on said petition for change of street names and on the recommendation of the City Planning Commission thereon, at which evidence in support of and against said petition was heard:

And the City Council having approved said petition at the hearing by finding that said name changes are in the best interest of the public and that no person will be materially injured thereby:

SNC-2-97

IT IS HEREBY ORDERED by the City Council of the City of Las Vegas, Nevada, that the following streets or portions thereon situated in the City of Las Vegas, County of Clark, State of Nevada, be changed in name:

HUSITE DRIVE TO: PAVILION CENTER DRIVE, BETWEEN CHARLESTON BOULEVARD AND LAURELGLEN DRIVE

A certified copy of this Order shall be recorded in the Office of the County Recorder of Clark County, Nevada as required by ordinance, and the street name changes ordered hereby shall become effective upon such recording. The County Recorder shall make a written notation of the change on any map or plat affected by this Order.

DATED this 30th day of June, 1997

[Signature]
JAN LAVERTY JONES, MAYOR

ATTEST:
[Signature]
BARBARA JO RONEUMUS, CITY CLERK

APPROVED AS TO FORM:
BRADFORD R. JERBIC, CITY ATTORNEY

By *[Signature]*
STEPHEN L. GEORGE

CONDITIONS SATISFIED:

By *[Signature]*
PLANNING AND DEVELOPMENT DEPARTMENT
THERESA O'DONNELL, DIRECTOR

When recorded mail to:

ROBERT S. GENZER, Acting Planning Manager
Planning and Development Department
731 S. 4th Street
Las Vegas, Nevada 89101

SNC-2-97

CLARK COUNTY, NEVADA
JUDITH A. VANDEVER, RECORDER
RECORDED AT REQUEST OF:
LAS VEGAS CITY

07-23-97 16:04 CAR 2
BOOK: 970723 INST: 01478
FEE: 8.00 RPTT: .00
NAME CHANGE
CONFIRMED COPY HAS NOT BEEN COMPARED TO THE ORIGINAL