

# TALEGA @ THE VISTAS - UNIT 2

Recorded in Book 113 Page 61 of Plats

200 Scale Map Location: K-35-7

Fire Dept. District Map # 2413:94

MASTER SITE ADDRESS: 1051 BRINKMAN ST

BLOCK 1	LOT	25	11452	PARKERSBURG AVE	E/W	PUBLIC STREET
		26	11456			
		27	11460			
		28	11464			
		29	11468			
		30	11472			
		31	11476			
		32	11480			
		33	11484			
		34	11485			
		35	11481			
		36	11477			
		37	11473			
		38	11469			
		39	11465			
		40	11461			
		41	11457			
		42	11453			
		43	11449			
		44	11445			
		45	11441			
		46	11437			
		47	11433			
		48	11429			
		49	11425			
		50	11421			
		51	11413			
		52	11409			
BLOCK 1	LOT	53	1060	BRINKMAN ST	N/S	PUBLIC STREET
		54	1056			
		55	1052			
		56	1048			
		57	1044			
		58	1040			
		59	1036			
		60	1032			
		61	1028			
		62	1024			
		63	1020			
		64	1016			
		65	1012			
		66	1008			
		67	1003			
		68	1007			
BLOCK 2	LOT	105	11444	PARKERSBURG AVE	E/W	PUBLIC STREET
		106	11440			
		107	11436			

## TALEGA @ THE VISTAS - UNIT 2

BLOCK 2	LOT	108	11432	PARKERSBURG AVE	E/W	PUBLIC STREET
		109	11428			
		110	11424			
		111	11420			
		112	11416			
BLOCK 5	LOT	69	1013	BRINKMAN ST	N/S	PUBLIC STREET
		70	1017			
		71	1021			
Common Area	B	1006	TALEGA ST	N/S	PUBLIC STREET	
Common Area	C	1001	BRINKMAN ST	N/S	PUBLIC STREET	
Common Area	D	11419	PARKERSBURG AVE	E/W	PUBLIC STREET	
Common Area	G	1011	BRINKMAN ST	N/S	PUBLIC STREET	

No addresses on STONEHAM STREET or DIVELEY AVENUE.

ORIGINAL DATE: 11/04/2003

**CITY OF LAS VEGAS  
PLANNING & DEVELOPMENT DEPARTMENT**

  
**MARIA D BITTNER, PLANNER I**

# TALEGA @ THE VISTAS - UNIT 2

Recorded in Book 113 Page 61 of Plats

200 Scale Map Location: K-35-7

Fire Dept. District Map # 2413:94

MASTER SITE ADDRESS: 1051 BRINKMAN ST

BLOCK 1	LOT	25	11452	PARKERSBURG AVE	E/W	PUBLIC STREET
		26	11456			
		27	11460			
		28	11464			
		29	11468			
		30	11472			
		31	11476			
		32	11480			
		33	11484			
		34	11485			
		35	11481			
		36	11477			
		37	11473			
		38	11469			
		39	11465			
		40	11461			
		41	11457			
		42	11453			
		43	11449			
		44	11445			
		45	11441			
		46	11437			
		47	11433			
		48	11429			
		49	11425			
		50	11421			
		51	11413			
		52	11409			
BLOCK 1	LOT	53	1060	BRINKMAN ST	N/S	PUBLIC STREET
		54	1056			
		55	1052			
		56	1048			
		57	1044			
		58	1040			
		59	1036			
		60	1032			
		61	1028			
		62	1024			
		63	1020			
		64	1016			
		65	1012			
		66	1008			
		67	1003			
		68	1007			
BLOCK 2	LOT	105	11444	PARKERSBURG AVE	E/W	PUBLIC STREET
		106	11440			
		107	11436			

## TALEGA @ THE VISTAS - UNIT 2

BLOCK 2	LOT	108	11432	PARKERSBURG AVE	E/W	PUBLIC STREET
		109	11428			
		110	11424			
		111	11420			
		112	11416			
BLOCK 5	LOT	69	1013	BRINKMAN ST	N/S	PUBLIC STREET
		70	1017			
		71	1021			
Common Area	B	1006	TALEGA ST	N/S	PUBLIC STREET	
Common Area	C	1001	BRINKMAN ST	N/S	PUBLIC STREET	
Common Area	D	11419	PARKERSBURG AVE	E/W	PUBLIC STREET	
Common Area	G	1011	BRINKMAN ST	N/S	PUBLIC STREET	

No addresses on STONEHAM STREET or DIVELEY AVENUE.

ORIGINAL DATE: 11/04/2003

CITY OF LAS VEGAS  
PLANNING & DEVELOPMENT DEPARTMENT



MARIA D BITTNER, PLANNER I

# TALEGA @ THE VISTAS - UNIT 2

Recorded in Book 113 Page 61 of Plats

200 Scale Map Location: K-35-7

Fire Dept. District Map # 2413:94

MASTER SITE ADDRESS: 1051 BRINKMAN ST

BLOCK 1	LOT	25	11452	PARKERSBURG AVE	E/W	PUBLIC STREET
		26	11456			
		27	11460			
		28	11464			
		29	11468			
		30	11472			
		31	11476			
		32	11480			
		33	11484			
		34	11485			
		35	11481			
		36	11477			
		37	11473			
		38	11469			
		39	11465			
		40	11461			
		41	11457			
		42	11453			
		43	11449			
		44	11445			
		45	11441			
		46	11437			
		47	11433			
		48	11429			
		49	11425			
		50	11421			
		51	11413			
		52	11409			
BLOCK 1	LOT	53	1060	BRINKMAN ST	N/S	PUBLIC STREET
		54	1056			
		55	1052			
		56	1048			
		57	1044			
		58	1040			
		59	1036			
		60	1032			
		61	1028			
		62	1024			
		63	1020			
		64	1016			
		65	1012			
		66	1008			
		67	1003			
		68	1007			
BLOCK 2	LOT	105	11444	PARKERSBURG AVE	E/W	PUBLIC STREET
		106	11440			
		107	11436			

## TALEGA @ THE VISTAS - UNIT 2

BLOCK 2	LOT	108	11432	PARKERSBURG AVE	E/W	PUBLIC STREET
		109	11428			
		110	11424			
		111	11420			
		112	11416			
BLOCK 5	LOT	69	1013	BRINKMAN ST	N/S	PUBLIC STREET
		70	1017			
		71	1021			
Common Area	B	1006	TALEGA ST	N/S	PUBLIC STREET	
Common Area	C	1001	BRINKMAN ST	N/S	PUBLIC STREET	
Common Area	D	11419	PARKERSBURG AVE	E/W	PUBLIC STREET	
Common Area	G	1011	BRINKMAN ST	N/S	PUBLIC STREET	

No addresses on STONEHAM STREET or DIVELEY AVENUE.

ORIGINAL DATE: 11/04/2003

CITY OF LAS VEGAS  
PLANNING & DEVELOPMENT DEPARTMENT



MARIA D BITTNER, PLANNER I




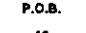

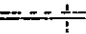
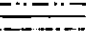
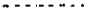







File Copy

# TALEGA @ THE VISTAS - UNIT 2

(A COMMON INTEREST COMMUNITY)

BEING A PORTION OF COMMON LOT "H" AND A SUBDIVISION OF A PORTION OF LOT 6, BLOCK B, OF "THE VISTAS AT SUMMERLIN VILLAGE 20 UNIT NO. 1" (BOOK 1D4, PAGE 88) LOCATED WITHIN THE SOUTH HALF (S 1/2) OF THE SOUTHWEST QUARTER (SW 1/4) OF SECTION 35, TOWNSHIP 20 SOUTH, RANGE 59 EAST, M.D.M., CITY OF LAS VEGAS, CLARK COUNTY, NEVADA

### LEGEND

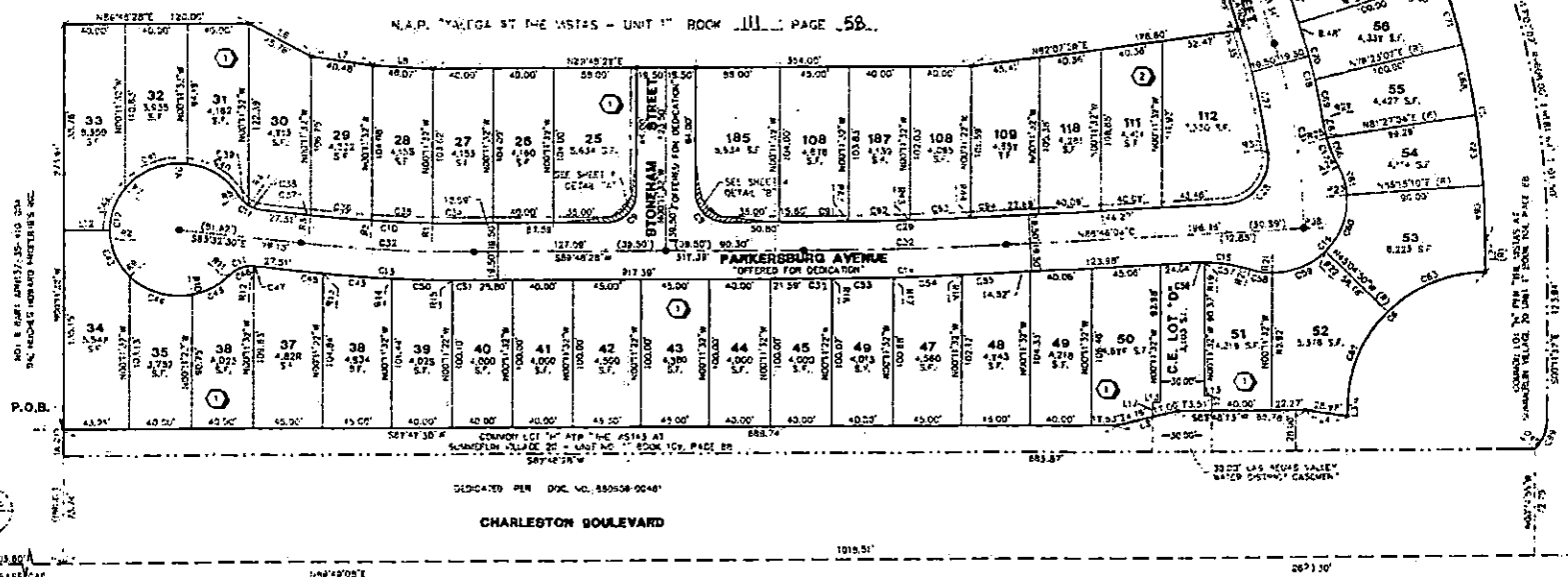
	AREA OF COMMON LOT "H" PER "THE VISTAS AT SUMMERLIN VILLAGE 20 UNIT NO. 1" FOR PUBLIC UTILITY, PUBLIC DRAINAGE, AND PUBLIC SEWER TO BE PRIVATELY MAINTAINED BY H.O.A. AND EMERGENCY FIRE ACCESS.	C22	CURVE LABEL
	SIGHT VISIBILITY RESTRICTION EDGE - SEE NOTE # (TO OR PRIVATELY MAINTAINED)	L33	COURSE LABEL
	PUBLIC UTILITY, PUBLIC DRAINAGE, PUBLIC SEWER, AND PEDESTRIAN ACCESS EASEMENT TO BE PRIVATELY MAINTAINED BY H.O.A. AND EMERGENCY FIRE ACCESS.	R11	RADIAL LINE LABEL
	POINT OF COMMENCEMENT	S.F.	SQUARE FEET
	POINT OF BEGINNING	CE	COMMON ELEMENT
	LOT NUMBER / PERCENTUAL LOTS = 33 COMMON ELEMENT LOTS = 4 TOTAL LOTS = 38	IC	POINT OF REVERSE CURVE
	BLOCK NUMBER	PC	POINT OF COMPOUND CURVE
	4' WIDE PUBLIC PEDESTRIAN ACCESS CORRIDOR EASEMENT	M.O.A.	MONUMENT ASSOCIATION
	SUBDIVISION BOUNDARY LINE	APP	ASSESSORS PARCEL NUMBER
	SITE DEVELOPMENT BOUNDARY LINE	NOT R PART	NOT R PART
	RIGHT-OF-WAY LINE	FOUND MONUMENT AS DESCRIBED	
	LOT LINE	SET 5/8" REBAR & AL. CAP STAMPED "VIN PLS 13500" WITH REFERENCE MONUMENTS IN SET IN THE TOP OF CURB	
	CENTERLINE	SET 1/2" REBAR & AL. CAP STAMPED "VIN PLS 13930" PER NOTE 1, "VIN PLS 13930" PER NOTE 1, 5/8" REBAR & ALUMINUM CAP "R. WAGONER PLS 11441" W/ REFERENCE MONUMENTS IN TOP OF CURB	
	EASEMENT LINE AS NOTED	SET PER "THE VISTAS AT SUMMERLIN VILLAGE 20 UNIT NO. 1" BOOK 1D4 OF PLATS, PAGE 88.	
		R.A.L. AND BRASS TAG STAMPED "VIN PLS 13500". SET PER "TALEGA AT THE VISTAS - UNIT 1" BOOK 1J1 OF PLATS, PAGE 22	



### NOTES:

- ALL REAR LOT CORNERS SHALL BE SET WITH A NAIL AND BRASS TAG "VIN PLS 13130" ON BLOCK WALLS AND ALL FRONT OR SIDE LOT CORNERS ADJOINING RIGHT-OF-WAY SHALL BE MARKED BY THE SAW CUTTING OF THE JACK OF CURBS ON THE PROLONGATION OF THE PROPERTY LINES.
- DIRECT VEHICULAR ACCESS TO VISTA RUM DRIVE, VISTA CENTER DRIVE AND CHARLESTON BOULEVARD THROUGH COMMON AREAS FROM ADJUTING LOTS IS PROHIBITED.
- SEE SHEET 4 FOR CURVE, COURSE, AND RADIAL LINE TABLES.
- NO WALLS, FENCES, TREES, SHRUBS, UTILITY APPURTENANCE, OR ANY OTHER OBJECTS, OTHER THAN TRAFFIC CONTROL DEVICES AND STREET LIGHT POLES MAY BE CONSTRUCTED OR INSTALLED WITHIN THE SIGHT VISIBILITY ZONE, UNLESS SAID OBJECT IS MAINTAINED AT LEAST 24 INCHES IN HEIGHT MEASURED FROM TOP OF CURB, OR WHERE NO CURB EXISTS A HEIGHT OF 22 INCHES MEASURED FROM THE TOP OF ADJUTING ASPHALT, GRAVEL, OR PAVEMENT STREET SURFACE.

CONTINUATION SEE SHEET 59 3



NO.	DATE	BY	REVISION

VISTA CENTER DRIVE  
DEDICATED PER DOC. NO. 200502700896

W.O. 5105-2  
SHEET 2 OF 4  
S.P.

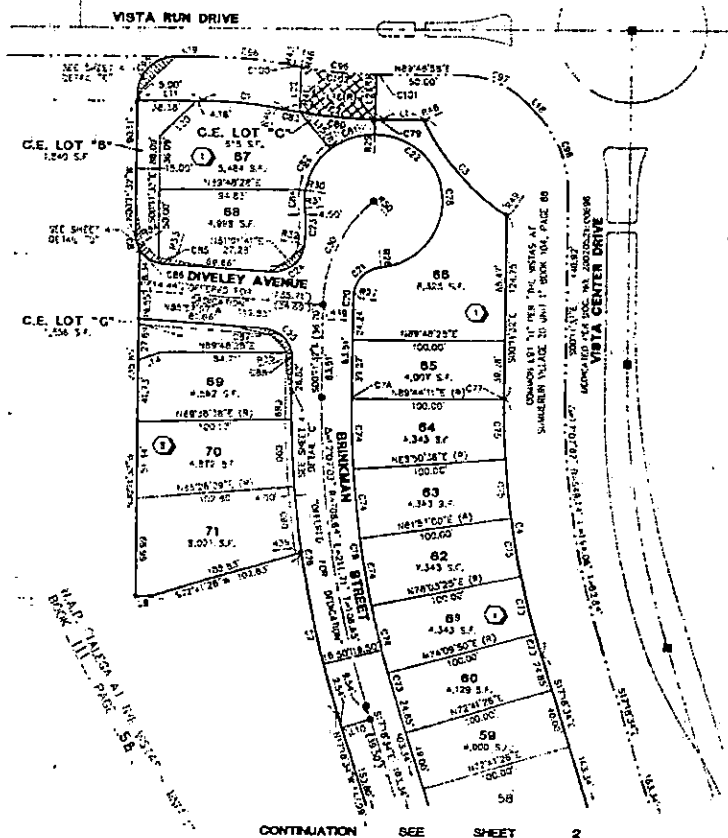
13-01

*File copy*

# TALEGA @ THE VISTAS - UNIT 2

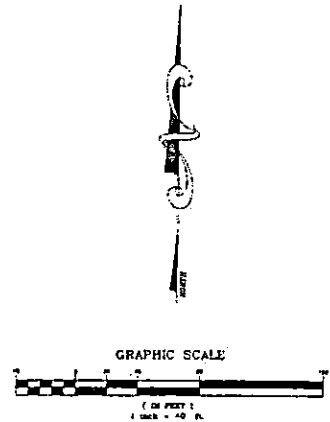
(A COMMON INTEREST COMMUNITY)

BEING A PORTION OF COMMON LOT "H" AND A SUBDIVISION OF A PORTION OF LOT 6, BLOCK B, OF "THE VISTAS AT SUMMERLIN VILLAGE 20 UNIT NO. 1" (BOOK 104, PAGE 66) LOCATED WITHIN THE SOUTH HALF (S 1/2) OF THE SOUTHWEST QUARTER (SW 1/4) OF SECTION 35, TOWNSHIP 20 SOUTH, RANGE 59 EAST, M.D.M., CITY OF LAS VEGAS, CLARK COUNTY, NEVADA



### NOTES:

- ALL PERM LOT CORNERS SHALL BE SET WITH A NAIL AND BRASS TAG "VIN PLS 12930" ON BLOCK WALLS AND ALL FRONT OR SIDE LOT CORNERS ADJOINING RIGHT-OF-WAY SHALL BE MARKED BY THE SAW CUTTING OF THE BACK OF CURBS ON THE PROLONGATION OF THE PROPERTY LINES.
- DIRECT VEHICULAR ACCESS TO VISTA RUN DRIVE, VISTA CENTER DRIVE AND CHARLETON BOULEVARD THROUGH COMMON AREAS FROM ADJOINING LOTS IS PROHIBITED.
- SEE SHEET 4 FOR CURVE, COURSE, AND RADIAL LINE TABLES.
- NO WALLS, FENCES, TREES, SHRUBS, UTILITY APPURTENANCE OR ANY OTHER OBJECTS, OTHER THAN TRAFFIC CONTROL DEVICES AND STREET LIGHT POLES MAY BE CONSTRUCTED OR INSTALLED WITHIN THE RIGHT VISIBILITY ZONE, UNLESS SAID OBJECT IS MAINTAINED AT LESS THAN 24 INCHES IN HEIGHT, MEASURED FROM TOP OF CURB, OR WHEN NO CURB EXISTS A HEIGHT OF 37 INCHES MEASURED FROM THE TOP OF ADJACENT ASPHALT DRIVE, OR PAVEMENT STREET SURFACE.



### LEGEND

	AREA OF COMMON LOT "H" PER "THE VISTAS AT SUMMERLIN VILLAGE 20 UNIT NO. 1" FOR PUBLIC UTILITY, PUBLIC DRAINAGE, AND PUBLIC SEWER TO BE PRIVATELY MAINTAINED BY H.O.A. AND EMERGENCY FIRE ACCESS.	C25	CURVE LABEL
	SIGHT VISIBILITY RESTRICTION ZONE - SEE NOTE 4 (TO BE PRIVATELY MAINTAINED)	L33	COURSE LABEL
	PUBLIC UTILITY, PUBLIC DRAINAGE, PUBLIC SEWER, AND PEDESTRIAN ACCESS EASEMENT TO BE PRIVATELY MAINTAINED BY H.O.A. AND EMERGENCY FIRE ACCESS.	R11	RADIAL LINE LABEL
	POINT OF COMMENCEMENT	S.F.	SQUARE FEET
	POINT OF BEGINNING	CE	COMMON ELEMENT
	LOT NUMBER / RESIDENTIAL LOTS = 58 COMMON ELEMENT LOTS = 4 TOTAL LOTS = 56	(R)	RADIAL
	BLOCK NUMBER	(PRC)	POINT OF REVERSE CURVE
	4' WIDE PUBLIC PEDESTRIAN ACCESS CORRIDOR EASEMENT	(PIC)	POINT OF CURVING CURVE
	SUBDIVISION BOUNDARY LINE	H.O.A.	HOME OWNERS ASSOCIATION
	SITE DEVELOPMENT BOUNDARY LINE	APN	ASSESSORS PARCEL NUMBER
	RIGHT-OF-WAY LINE	N.A.P.	NOT A PART
	LOT LINE	⊙	FOUND MONUMENT AS DESCRIBED
	CENTERLINE	●	SET 3/8" REBAR & AL. CAP STAMPED "VIN PLS 12930" WITH REFERENCE MONUMENTS IN SET IN THE TOP OF CURB
	EASEMENT LINE AS NOTED	■	SET NAIL AND BRASS TAG "VIN PLS 12930" PER NOTE 1.
		●	3/8" REBAR & ALUMINUM CAP "R. WROMEN" PLS 12941" WITH REFERENCE MONUMENTS IN TOP OF CURB
		●	SET PER "THE VISTAS AT SUMMERLIN VILLAGE 20 UNIT NO. 1" BOOK 104 OF PLATS, PAGE 66.
		●	NAIL AND BRASS TAG STAMPED "VIN PLS 12930" SET PER "TALEGA AS THE VISTAS - UNIT 1" BOOK 111 OF PLATS, PAGE 55.

ACT	DATE	BY	REVISION

W.O. 6105-2  
SHEET 3 OF 4  
S.P.

*113-61*