

# LONE MOUNTAIN HEIGHTS UNIT 5

Recorded in Book 100 Page 11 of Plats

200 Scale Map Location: K-1-8

Fire Dept. District Map # 1814:56; 65,66;75,76;85,8

MASTER SITE ADDRESS: 10431 WELLINGTON MANOR AVE

BLOCK C	LOT	278	10452	COOK BLUFF AVE	E/W	PRIVATE STREET
		279	10456			
		280	10460			
		281	10464			
		282	10468			
BLOCK C	LOT	294	4314	ROBINS RIDGE DR	N/S	PRIVATE STREET
BLOCK D	LOT	31	10433	WELLINGTON MANOR AVE	E/W	PRIVATE STREET
		32	10437			
		33	10451			
		34	10455			
		35	10459			
		36	10463			
		37	10467			
		38	10471			
		39	10475			
		40	10479			
		41	10483			
		42	10487			
		43	10488			
		44	10484			
		45	10480			
		46	10476			
		47	10472			
		48	10468			
		49	10464			
		50	10460			
		51	10456			
		52	10452			
BLOCK D	LOT	53	10453	PRECLIFFS CT	E/W	PRIVATE STREET
		54	10457			
		55	10461			
		56	10465			
		57	10469			
		58	10473			
		59	10477			
		60	10481			
		61	10485			
		62	10489			
		63	10486			
		64	10482			
		65	10478			
		66	10474			
		67	10470			
		68	10466			
		69	10460			
		70	10456			

## LONE MOUNTAIN HEIGHTS UNIT 5

BLOCK D	LOT	71	10452	PRECLIFFS CT	E/W	PRIVATE STREET
BLOCK D	LOT	72	10453	CANYON CLIFF CT	E/W	PRIVATE STREET
		73	10457			
		74	10461			
		75	10465			
		76	10469			
		77	10473			
		78	10477			
		79	10481			
		80	10485			
		81	10484			
		82	10480			
		83	10476			
		84	10472			
		85	10468			
		86	10464			
		87	10460			
		88	10456			
		89	10452			
BLOCK D	LOT	90	10451	COOK BLUFF AVE	E/W	PRIVATE STREET
		91	10455			
		92	10459			
		93	10463			
		94	10467			
		95	10471			
		96	10475			
		97	10479			
BLOCK D	LOT	98	4201	ROBINS RIDGE DR	N/S	PRIVATE STREET
		99	4205			
		100	4209			
		101	4213			
		102	4217			
		103	4221			
		104	4225			
		105	4229			
		106	4233			
		107	4237			
		108	4241			
		109	4245			
		110	4301			
		111	4305			
		112	4309			
		113	4313			
		114	4317			
		115	4321			
		116	4325			
		117	4329			
		118	4333			
		119	4337			
		120	4341			
		121	4345			

# **LONE MOUNTAIN HEIGHTS UNIT 5**

ORIGINAL DATE: 5/23/2001

AMENDED DATE: 11/26/2001

**CITY OF LAS VEGAS  
PLANNING & DEVELOPMENT DEPARTMENT**

**PAUL BENGTON, PLANNER I**

# LONE MOUNTAIN HEIGHTS - UNIT 5

Recorded in Book 100 Page 11 of Plats

200 Scale Map Location: K-1-8

Fire Dept. District Map # 1814:56; 65,66;75,76;85,8

MASTER SITE ADDRESS: 10431 WELLINGTON MANOR AVE

BLOCK C	LOT	278	10452	COOK BLUFF AVE	E/W	PRIVATE STREET
		279	10456			
		280	10460			
		281	10464			
		282	10468			

BLOCK C	LOT	283	4212	ROBINS RIDGE DR	N/S	PRIVATE STREET
		284	4218			
		285	4224			
		286	4228			
		287	4232			
		288	4236			
		289	4240			
		290	4244			
		291	4302			
		292	4306			
		293	4310			
		294	4314			

LOTS 283-293 NO LONGER A PART OF  
this plat. See the AMENDED PLAT  
OF A PORTION OF "LONE MOUNTAIN HEIGHTS  
-UNIT 3", TOGETHER WITH A PORTION OF  
"LONE MOUNTAIN HEIGHTS-UNIT 5"

BLOCK D	LOT	31	10433	WELLINGTON MANOR AVE	E/W	PRIVATE STREET
		32	10437			
		33	10451			
		34	10455			
		35	10459			
		36	10463			
		37	10467			
		38	10471			
		39	10475			
		40	10479			
		41	10483			
		42	10487			
		43	10488			
		44	10484			
		45	10480			
		46	10476			
		47	10472			
		48	10468			
		49	10464			
		50	10460			
		51	10456			
		52	10452			

BLOCK D	LOT	53	10453	PRECLIFFS CT	E/W	PRIVATE STREET
		54	10457			
		55	10461			
		56	10465			
		57	10469			
		58	10473			
		59	10477			

# LONE MOUNTAIN HEIGHTS - UNIT 5

BLOCK D	LOT	60	10481	PRECLIFFS CT	E/W	PRIVATE STREET
		61	10485			
		62	10489			
		63	10486			
		64	10482			
		65	10478			
		66	10474			
		67	10470			
		68	10466			
		69	10460			
		70	10456			
71	10452					
BLOCK D	LOT	72	10453	CANYON CLIFF CT	E/W	PRIVATE STREET
		73	10457			
		74	10461			
		75	10465			
		76	10469			
		77	10473			
		78	10477			
		79	10481			
		80	10485			
		81	10484			
		82	10480			
		83	10476			
		84	10472			
		85	10468			
		86	10464			
		87	10460			
		88	10456			
		89	10452			
		BLOCK D	LOT			
91	10455					
92	10459					
93	10463					
94	10467					
95	10471					
96	10475					
97	10479					
BLOCK D	LOT	98	4201	ROBINS RIDGE DR	N/S	PRIVATE STREET
		99	4205			
		100	4209			
		101	4213			
		102	4217			
		103	4221			
		104	4225			
		105	4229			
		106	4233			
		107	4237			
		108	4241			
		109	4245			
110	4301					
111	4305					
112	4309					

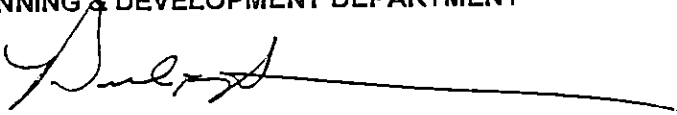
# LONE MOUNTAIN HEIGHTS - UNIT 5

BLOCK D	LOT					
	113	4313	ROBINS RIDGE DR		N/S	PRIVATE STREET
	114	4317				
	115	4321				
	116	4325				
	117	4329				
	118	4333				
	119	4337				
	120	4341				
	121	4345				

No addresses on TERRAPIN MOUNTAIN DRIVE (N/S Private Street).

ORIGINAL DATE: 5/23/2001

CITY OF LAS VEGAS  
PLANNING & DEVELOPMENT DEPARTMENT



PAUL BENGTON, PLANNER I

# LONE MOUNTAIN HEIGHTS - UNIT 5

Recorded in Book 100 Page 11 of Plats

200 Scale Map Location: K-1-8

Fire Dept. District Map # 1814:56; 65,66;75,76;85,8

MASTER SITE ADDRESS: 10431 WELLINGTON MANOR AVE

BLOCK C	LOT	278	10452	COOK BLUFF AVE	E/W	PRIVATE STREET
		279	10456			
		280	10460			
		281	10464			
		282	10468			

BLOCK C	LOT	283	4212	ROBINS RIDGE DR	N/S	PRIVATE STREET
		284	4218			
		285	4224			
		286	4228			
		287	4232			
		288	4236			
		289	4240			
		290	4244			
		291	4302			
		292	4306			
		293	4310			
		294	4314			

LOTS 283-293 NO LONGER A PART OF  
this plat. See the AMENDED PLAT  
OF A PORTION OF "LONE MOUNTAIN HEIGHTS  
-UNIT 3", TOGETHER WITH A PORTION OF  
"LONE MOUNTAIN HEIGHTS-UNIT 5"

BLOCK D	LOT	31	10433	WELLINGTON MANOR AVE	E/W	PRIVATE STREET
		32	10437			
		33	10451			
		34	10455			
		35	10459			
		36	10463			
		37	10467			
		38	10471			
		39	10475			
		40	10479			
		41	10483			
		42	10487			
		43	10488			
		44	10484			
		45	10480			
		46	10476			
		47	10472			
		48	10468			
		49	10464			
		50	10460			
		51	10456			
		52	10452			

BLOCK D	LOT	53	10453	PRECLIFFS CT	E/W	PRIVATE STREET
		54	10457			
		55	10461			
		56	10465			
		57	10469			
		58	10473			
		59	10477			

# LONE MOUNTAIN HEIGHTS - UNIT 5

BLOCK D	LOT	60	10481	PRECLIFFS CT	E/W	PRIVATE STREET
		61	10485			
		62	10489			
		63	10486			
		64	10482			
		65	10478			
		66	10474			
		67	10470			
		68	10466			
		69	10460			
		70	10456			
71	10452					
BLOCK D	LOT	72	10453	CANYON CLIFF CT	E/W	PRIVATE STREET
		73	10457			
		74	10461			
		75	10465			
		76	10469			
		77	10473			
		78	10477			
		79	10481			
		80	10485			
		81	10484			
		82	10480			
		83	10476			
		84	10472			
		85	10468			
		86	10464			
		87	10460			
		88	10456			
		89	10452			
		BLOCK D	LOT			
91	10455					
92	10459					
93	10463					
94	10467					
95	10471					
96	10475					
97	10479					
BLOCK D	LOT	98	4201	ROBINS RIDGE DR	N/S	PRIVATE STREET
		99	4205			
		100	4209			
		101	4213			
		102	4217			
		103	4221			
		104	4225			
		105	4229			
		106	4233			
		107	4237			
		108	4241			
		109	4245			
		110	4301			
		111	4305			
112	4309					

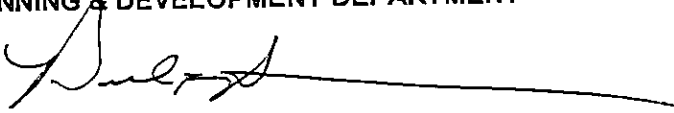
# LONE MOUNTAIN HEIGHTS - UNIT 5

BLOCK	D	LOT	ADDRESS	STREET	
		113	4313	ROBINS RIDGE DR	N/S PRIVATE STREET
		114	4317		
		115	4321		
		116	4325		
		117	4329		
		118	4333		
		119	4337		
		120	4341		
		121	4345		

No addresses on TERRAPIN MOUNTAIN DRIVE (N/S Private Street).

ORIGINAL DATE: 5/23/2001

CITY OF LAS VEGAS  
PLANNING & DEVELOPMENT DEPARTMENT



PAUL BENGTON, PLANNER I

# LONE MOUNTAIN HEIGHTS - UNIT 5

Recorded in Book 100 Page 11 of Plats

200 Scale Map Location: K-1-8

Fire Dept. District Map # 1814:56; 65,66;75,76;85,8

MASTER SITE ADDRESS: 10431 WELLINGTON MANOR AVE

BLOCK C	LOT	278	10452	COOK BLUFF AVE	E/W	PRIVATE STREET
		279	10456			
		280	10460			
		281	10464			
		282	10468			

BLOCK C	LOT	283	4212	ROBINS RIDGE DR	N/S	PRIVATE STREET
		284	4218			
		285	4224			
		286	4228			
		287	4232			
		288	4236			
		289	4240			
		290	4244			
		291	4302			
		292	4306			
		293	4310			
		294	4314			

LOTS 283-293 NO LONGER A PART OF  
 this plat. See the AMENDED PLAT  
 OF A PORTION OF "LONE MOUNTAIN HEIGHTS  
 -UNIT 3", TOGETHER WITH A PORTION OF  
"LONE MOUNTAIN HEIGHTS-UNIT 5"

BLOCK D	LOT	31	10433	WELLINGTON MANOR AVE	E/W	PRIVATE STREET
		32	10437			
		33	10451			
		34	10455			
		35	10459			
		36	10463			
		37	10467			
		38	10471			
		39	10475			
		40	10479			
		41	10483			
		42	10487			
		43	10488			
		44	10484			
		45	10480			
		46	10476			
		47	10472			
		48	10468			
		49	10464			
		50	10460			
		51	10456			
		52	10452			

BLOCK D	LOT	53	10453	PRECLIFFS CT	E/W	PRIVATE STREET
		54	10457			
		55	10461			
		56	10465			
		57	10469			
		58	10473			
		59	10477			

# LONE MOUNTAIN HEIGHTS - UNIT 5

BLOCK D	LOT	60	10481	PRECLIFFS CT	E/W	PRIVATE STREET
		61	10485			
		62	10489			
		63	10486			
		64	10482			
		65	10478			
		66	10474			
		67	10470			
		68	10466			
		69	10460			
		70	10456			
		71	10452			
BLOCK D	LOT	72	10453	CANYON CLIFF CT	E/W	PRIVATE STREET
		73	10457			
		74	10461			
		75	10465			
		76	10469			
		77	10473			
		78	10477			
		79	10481			
		80	10485			
		81	10484			
		82	10480			
		83	10476			
		84	10472			
		85	10468			
		86	10464			
		87	10460			
		88	10456			
		89	10452			
BLOCK D	LOT	90	10451	COOK BLUFF AVE	E/W	PRIVATE STREET
		91	10455			
		92	10459			
		93	10463			
		94	10467			
		95	10471			
		96	10475			
		97	10479			
BLOCK D	LOT	98	4201	ROBINS RIDGE DR	N/S	PRIVATE STREET
		99	4205			
		100	4209			
		101	4213			
		102	4217			
		103	4221			
		104	4225			
		105	4229			
		106	4233			
		107	4237			
		108	4241			
		109	4245			
		110	4301			
		111	4305			
		112	4309			

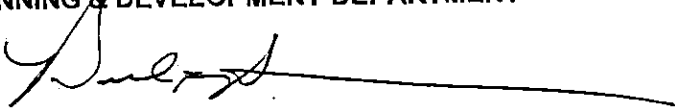
# LONE MOUNTAIN HEIGHTS - UNIT 5

BLOCK D	LOT					
	113	4313	ROBINS RIDGE DR		N/S	PRIVATE STREET
	114	4317				
	115	4321				
	116	4325				
	117	4329				
	118	4333				
	119	4337				
	120	4341				
	121	4345				

No addresses on TERRAPIN MOUNTAIN DRIVE (N/S Private Street).

ORIGINAL DATE: 5/23/2001

CITY OF LAS VEGAS  
PLANNING & DEVELOPMENT DEPARTMENT



PAUL BENGTON, PLANNER I

# LONE MOUNTAIN HEIGHTS - UNIT 5

Recorded in Book 100 Page 11 of Plats

200 Scale Map Location: K-1-8

Fire Dept. District Map # 1814:56; 65,66;75,76;85,8

MASTER SITE ADDRESS: 10431 WELLINGTON MANOR AVE

BLOCK C	LOT					
	278	10452	COOK BLUFF AVE		E/W	PRIVATE STREET
	279	10456				
	280	10460				
	281	10464				
	282	10468				

BLOCK C	LOT					
	283	4212	ROBINS RIDGE DR		N/S	PRIVATE STREET
	284	4218				
	285	4224				
	286	4228				
	287	4232				
	288	4236				
	289	4240				
	290	4244				
	291	4302				
	292	4306				
	293	4310				
	294	4314				

LOTS 283 - 293 NO LONGER A PART OF this plat. See the AMENDED PLAT OF A PORTION OF "LONE MOUNTAIN HEIGHTS - UNIT 3", TOGETHER WITH A PORTION OF "LONE MOUNTAIN HEIGHTS - UNIT 5"

BLOCK D	LOT					
	31	10433	WELLINGTON MANOR AVE		E/W	PRIVATE STREET
	32	10437				
	33	10451				
	34	10455				
	35	10459				
	36	10463				
	37	10467				
	38	10471				
	39	10475				
	40	10479				
	41	10483				
	42	10487				
	43	10488				
	44	10484				
	45	10480				
	46	10476				
	47	10472				
	48	10468				
	49	10464				
	50	10460				
	51	10456				
	52	10452				

BLOCK D	LOT					
	53	10453	PRECLIFFS CT		E/W	PRIVATE STREET
	54	10457				
	55	10461				
	56	10465				
	57	10469				
	58	10473				
	59	10477				

## LONE MOUNTAIN HEIGHTS - UNIT 5

BLOCK D	LOT	60	10481	PRECLIFFS CT	E/W	PRIVATE STREET
		61	10485			
		62	10489			
		63	10486			
		64	10482			
		65	10478			
		66	10474			
		67	10470			
		68	10466			
		69	10460			
		70	10456			
		71	10452			

BLOCK D	LOT	72	10453	CANYON CLIFF CT	E/W	PRIVATE STREET
		73	10457			
		74	10461			
		75	10465			
		76	10469			
		77	10473			
		78	10477			
		79	10481			
		80	10485			
		81	10484			
		82	10480			
		83	10476			
		84	10472			
		85	10468			
		86	10464			
		87	10460			
		88	10456			
		89	10452			

BLOCK D	LOT	90	10451	COOK BLUFF AVE	E/W	PRIVATE STREET
		91	10455			
		92	10459			
		93	10463			
		94	10467			
		95	10471			
		96	10475			
		97	10479			

BLOCK D	LOT	98	4201	ROBINS RIDGE DR	N/S	PRIVATE STREET
		99	4205			
		100	4209			
		101	4213			
		102	4217			
		103	4221			
		104	4225			
		105	4229			
		106	4233			
		107	4237			
		108	4241			
		109	4245			
		110	4301			
		111	4305			
		112	4309			

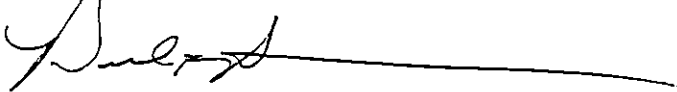
# LONE MOUNTAIN HEIGHTS - UNIT 5

BLOCK	D	LOT	ADDRESS	STREET	
		113	4313	ROBINS RIDGE DR	N/S PRIVATE STREET
		114	4317		
		115	4321		
		116	4325		
		117	4329		
		118	4333		
		119	4337		
		120	4341		
		121	4345		

No addresses on TERRAPIN MOUNTAIN DRIVE (N/S Private Street).

ORIGINAL DATE: 5/23/2001

CITY OF LAS VEGAS  
PLANNING & DEVELOPMENT DEPARTMENT



PAUL BENGTSON, PLANNER I

**AMENDED PLAT OF A PORTION OF "LONE MOUNTAIN HEIGHTS – UNIT 3", TOGETHER WITH A PORTION OF "LONE MOUNTAIN HEIGHTS – UNIT 5"**

Recorded in Book 102 Page 72 of Plats

200 Scale Map Location: K-1-6

Fire Dept. District Map # 1814:66

MASTER SITE ADDRESS: 4300 ROBINS RIDGE DR

BLOCK C	LOT	270	4305	TERRAPIN MOUNTAIN	DR	N/S	PRIVATE STREET
		271	4301				
		272	4229				
		273	4225				
		274	4221				
		275	4217				
		276	4213				
		277	4209				
BLOCK C	LOT	283	4212	ROBINS RIDGE DR		N/S	PRIVATE STREET
		284	4218				
		285	4224				
		286	4228				
		287	4232				
		288	4236				
		289	4240				
		290	4244				
		291	4302				
		292	4306				
		293	4310				

No addresses on COOK BLUFF AVENUE (E/W Private Street).

ORIGINAL DATE: 11/26/2001

CITY OF LAS VEGAS  
PLANNING & DEVELOPMENT DEPARTMENT

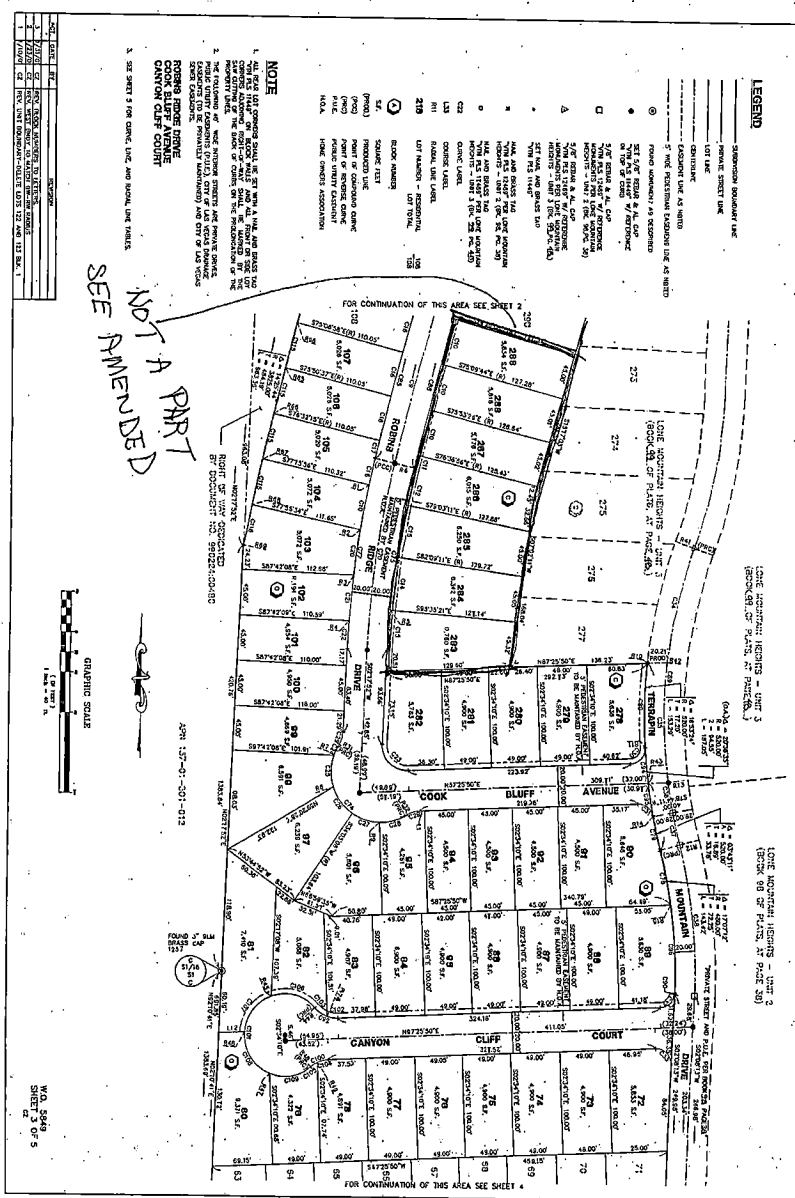


DAVID R BRATCHER, PLANNER II

*FILE IN UNIT 5*

FILE

**LONE MOUNTAIN HEIGHTS - UNIT 5**  
 (A COMMON INTEREST COMMUNITY AND PLANNED DEVELOPMENT)  
 BEING A PORTION OF THE WEST HALF (1/2) OF THE SOUTHEAST QUARTER (SE 1/4) OF  
 SECTION 1, TOWNSHIP 20 SOUTH, RANGE 59 EAST, N.M.S., CITY OF LAS VEGAS, CLARK COUNTY, NEVADA



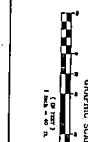
**LEGEND**

- American Boundary Line
- Private Street Line
- Easement Line as Shown
- The Rosemary Madison Line as Shown
- Paved Sidewalk as Shown
- 5/8" Steel A. B. City
- 1/2" Steel A. B. City
- 3/4" Steel A. B. City
- 1" Steel A. B. City
- 1 1/2" Steel A. B. City
- 2" Steel A. B. City
- 3" Steel A. B. City
- 4" Steel A. B. City
- 6" Steel A. B. City
- 8" Steel A. B. City
- 10" Steel A. B. City
- 12" Steel A. B. City
- 14" Steel A. B. City
- 16" Steel A. B. City
- 18" Steel A. B. City
- 20" Steel A. B. City
- 22" Steel A. B. City
- 24" Steel A. B. City
- 26" Steel A. B. City
- 28" Steel A. B. City
- 30" Steel A. B. City
- 32" Steel A. B. City
- 34" Steel A. B. City
- 36" Steel A. B. City
- 38" Steel A. B. City
- 40" Steel A. B. City
- 42" Steel A. B. City
- 44" Steel A. B. City
- 46" Steel A. B. City
- 48" Steel A. B. City
- 50" Steel A. B. City
- 52" Steel A. B. City
- 54" Steel A. B. City
- 56" Steel A. B. City
- 58" Steel A. B. City
- 60" Steel A. B. City
- 62" Steel A. B. City
- 64" Steel A. B. City
- 66" Steel A. B. City
- 68" Steel A. B. City
- 70" Steel A. B. City
- 72" Steel A. B. City
- 74" Steel A. B. City
- 76" Steel A. B. City
- 78" Steel A. B. City
- 80" Steel A. B. City
- 82" Steel A. B. City
- 84" Steel A. B. City
- 86" Steel A. B. City
- 88" Steel A. B. City
- 90" Steel A. B. City
- 92" Steel A. B. City
- 94" Steel A. B. City
- 96" Steel A. B. City
- 98" Steel A. B. City
- 100" Steel A. B. City

**NOTE**

1. THE LOTS SHOWN ON THIS MAP ARE THE LOTS SHOWN ON THE PREVIOUS MAP AND ARE NOT TO BE CONSIDERED AS A PART OF THE PREVIOUS MAP.
2. THE LOTS SHOWN ON THIS MAP ARE THE LOTS SHOWN ON THE PREVIOUS MAP AND ARE NOT TO BE CONSIDERED AS A PART OF THE PREVIOUS MAP.
3. SEE SHEET 2 FOR OTHER LOTS AND BOUNDARY LINE MARKS.

1	2	3	4	5	6	7	8	9	10
1	2	3	4	5	6	7	8	9	10
1	2	3	4	5	6	7	8	9	10
1	2	3	4	5	6	7	8	9	10
1	2	3	4	5	6	7	8	9	10
1	2	3	4	5	6	7	8	9	10
1	2	3	4	5	6	7	8	9	10
1	2	3	4	5	6	7	8	9	10
1	2	3	4	5	6	7	8	9	10
1	2	3	4	5	6	7	8	9	10



W.D. 5648  
 SHEET 3 OF 5  
 100-11



