

BRIGHTON & KENSINGTON @ PROVIDENCE/CLIFFS EDGE - UNIT 2

Recorded in Book 132 Page 053 of Plats

MASTER SITE ADDRESS: 10420 DORRELL LN

Fire Department District Map Number:

01514-23

<u>Block</u>	<u>Lot</u>	<u>Address</u>
7	181	10536 FULBRIGHT AVE
	182	10532
	183	7119 ROSECRANS ST
	184	7123
	185	7131
	186	7135
	187	7139
	188	7143
	189	7147
	190	7155
	191	7159
	192	10528 LOMA PORTAL AVE
	193	10524
	194	10520
	195	10516
	196	10512
	197	10508
	198	10504
	199	10432
	200	10428
	201	10424
	202	10420
	203	10416
	204	10412
	205	10408
	206	7160 WHITFORD ST
	207	7156
	208	7148
	209	7144
	210	7140

BRIGHTON & KENSINGTON @ PROVIDENCE/CLIFFS EDGE - UNIT 2

Recorded in Book 132 Page 053 of Plats

MASTER SITE ADDRESS: 10420 DORRELL LN

Fire Department District Map Number:

01514-23

<u>Block</u>	<u>Lot</u>	<u>Address</u>
7	211	7136 WHITFORD ST
	212	7132
	213	7124
	214	7120
	215	7116
	216	7112
	217	7108
	218	7048
	219	7044
	220	7040
	221	7036
	222	7032
	223	7024
	224	7020
	225	7014
	226	7010
	227	7006
	228	7007
	229	7011
	230	7015
	231	7021
	232	7025
	233	7033
5	234	10424 MULLINIX AVE
	235	10428
	244	7123 BOOMER BEACH ST
	245	7119
	246	7115
	247	7111
	248	10427 ULRIC AVE

BRIGHTON & KENSINGTON @ PROVIDENCE/CLIFFS EDGE - UNIT 2

Recorded in Book 132 Page 053 of Plats

MASTER SITE ADDRESS: 10420 DORRELL LN

Fire Department District Map Number:

01514-23

<u>Block</u>	<u>Lot</u>	<u>Address</u>
5	249	10423 ULRIC AVE
	250	10417
	251	10413
	252	10409
	253	10405
	6	254
255		7117
256		7121
257		7125
258		7129
259		7133
260		7137
261		7141
262		10417 LOMA PORTAL AVE
263		10421
264		10425
265		10429
266		10503
267		10507
268	10511	
269	10515	
270	10519	
271	10523	
272	7132 ROSECRANS ST	
273	7128	
274	7124	
275	7120	
276	7116	
277	7112	
287	10428 DOMAN AVE	

BRIGHTON & KENSINGTON @ PROVIDENCE/CLIFFS EDGE - UNIT 2

Recorded in Book 132 Page 053 of Plats

MASTER SITE ADDRESS: 10420 DORRELL LN

Fire Department District Map Number:

01514-23

<u>Block</u>	<u>Lot</u>	<u>Address</u>
6	288	10424 DOMAN AVE
	289	10420
	290	10416
	291	7124 BOOMER BEACH ST
	292	7120
	293	7116
	294	7112

Greg Kapovich, Planner I



BRIGHTON & KENSINGTON @ PROVIDENCE/CLIFFS EDGE - UNIT 2

(COMMON INTEREST COMMUNITY)

BEING A MERGER AND RE-SUBDIVISION OF PORTIONS OF LOT 11B AND LOT 812 OF "CLIFFS EDGE PARENT", BOOK 118 OF PLATS, AT PAGE 88, TOGETHER WITH ADDITIONAL ACREAGE, LOCATED WITHIN SECTION 24, TOWNSHIP 19 SOUTH, RANGE 59 EAST, M.D.M., CITY OF LAS VEGAS, CLARK COUNTY, NEVADA.

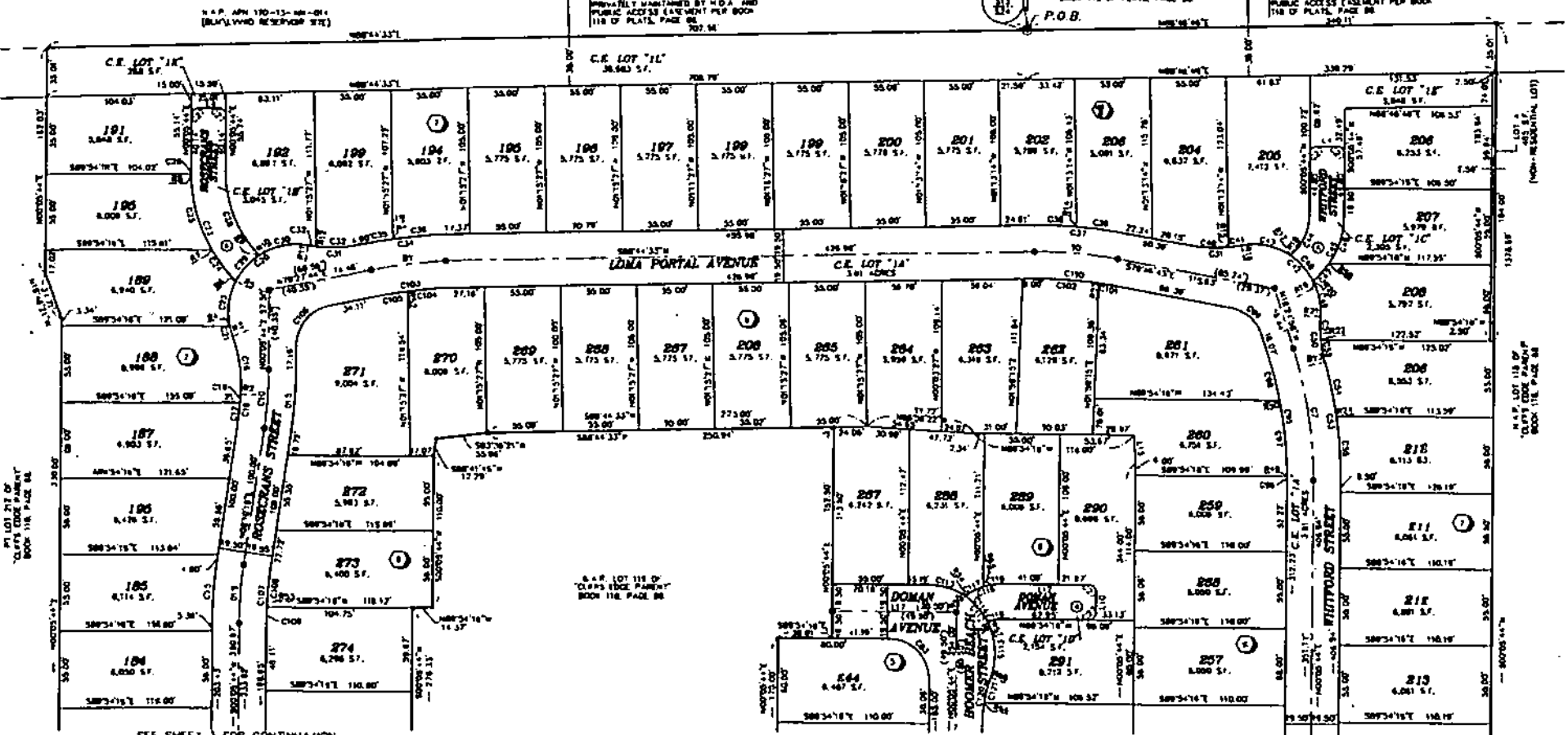
NOTES:

1. ALL REAR LOT CORNERS SHALL BE SET WITH A NAIL AND BRASS PIN "VIN 1000" IN BLOCK WALLS AND ALL FRONT OR SIDE LOT CORNERS ADJOINING RIGHT-OF-WAY SHALL BE MARKED BY SAW CUTTING IN THE BACK OF CURBS TO THE PROPORTION OF THE PROPERTY LINES.
2. SEE SHEET 1 FOR CURVE, COURSE, AND RADIAL TABLES.
3. THE FOLLOWING WITHIN STRIPS ARE PRIVATE STRIPS, ALSO KNOWN AS COMMON ELEMENT LOT "14", PUBLIC IMPROVEMENT EASEMENTS TO BE PRIVATELY MAINTAINED BY THE HOMEOWNERS ASSOCIATION, PUBLIC UTILITY EASEMENTS (P.U.E.) AND CITY OF LAS VEGAS WATER EASEMENTS.

ROSECRANS STREET
WHITFORD STREET
BOOMER BEACH STREET
KENSINGTON COVE STREET
FULBRIGHT AVENUE

LOMA PORTAL AVENUE
DOMAN AVENUE
MULLINX AVENUE
ULRIC AVENUE

FILE COPY



35.00' WIDE 14'-HIGH-PAVED G.I.T. OF LAS VEGAS WATER EASEMENT, PUBLIC IMPROVEMENT EASEMENTS TO BE PRIVATELY MAINTAINED BY H.O.A. AND PRIVATE TRAIL W/ADJACENT EASEMENT TO BE PRIVATELY MAINTAINED BY H.O.A. AND PUBLIC ACCESS EASEMENT PER BOOK 118 OF PLATS, PAGE 88.

FOUND IN BRASS CAP 1008 SET WITH MONUMENT 7" BRASS CAP STAMPED "VIN PLS 1000" IN CONCRETE UPON COMPLETION OF CONSTRUCTION.

APN 120-13-100-005
M.P. LOT 11B
"CLIFFS EDGE PARENT"
BOOK 118 OF PLATS, PAGE 88

35.00' WIDE 14'-HIGH-PAVED CITY OF LAS VEGAS WATER EASEMENT, PUBLIC IMPROVEMENT EASEMENTS TO BE PRIVATELY MAINTAINED BY H.O.A. AND PRIVATE TRAIL W/ADJACENT EASEMENT TO BE PRIVATELY MAINTAINED BY H.O.A. AND PUBLIC ACCESS EASEMENT PER BOOK 118 OF PLATS, PAGE 88.

PT. LOT 715 OF "CLIFFS EDGE PARENT" BOOK 118, PAGE 88

(NON-RESIDENTIAL LOT)

M.P. LOT 11B OF "CLIFFS EDGE PARENT" BOOK 118, PAGE 88

SEE SHEET 3 FOR CONTINUATION

SEE SHEET 3 FOR CONTINUATION

LEGEND:

- P.O.B. POINT OF BEGINNING
- SUBDIVISION BOUNDARY (88)
- CITY LINE
- QUARTER SECTION LINE
- RIGHT-OF-WAY LINE
- LOT LINE
- EASEMENT LINE
- C12 CURVE LABEL
- L14 CURVE LABEL
- R13 RADIAL LABEL
- S17 SQUARE LABEL
- C1 COMMON ELEMENT

1. 1/4" AND BRASS PIN "VIN 1000" SET IN SAW CUT TOP OF CURB PER M.U.E. 1
 2. 5/8" DIA. METAL AND ALUMINUM CAP STAMPED "VIN PLS 1000" WITH REFERENCE MONUMENT SET ON TOP OF CURB
 3. FOUND AS PURCHASED
 4. LOT NUMBER, RESIDENTIAL LOTS - 87
 COMMON LOTS - 82
 NON-RESIDENTIAL LOTS - 7
 TOTAL LOTS - 111
 NAIL AND BRASS PIN "VIN 1000" PER "CLIFFS EDGE PARENT" BOOK 118, PAGE 88

1. PRIVATE STRIPS, LIMITED USE COMMON ELEMENT (L.U.C.E.), CITY OF LAS VEGAS TRAILING EASEMENT, TO BE PRIVATELY MAINTAINED BY H.O.A. AND PRIVATE TRAIL W/ADJACENT EASEMENT TO BE PRIVATELY MAINTAINED BY H.O.A. AND PUBLIC ACCESS EASEMENT PER BOOK 118 OF PLATS, PAGE 88.

2. BLOCK NUMBER

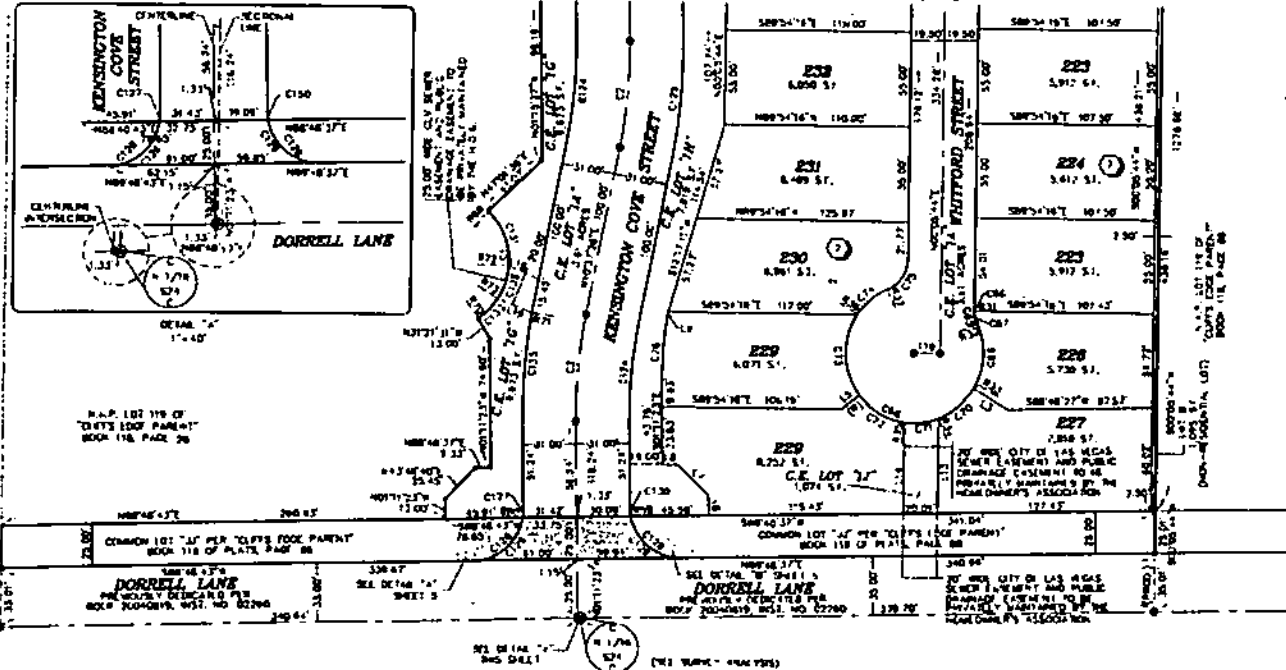
ACT	DATE	BY	REVISION

BRIGHTON & KENSINGTON @ PROVIDENCE/CLIFFS EDGE - UNIT 2

(COMMON INTEREST COMMUNITY)

BEING A MERGER AND RE-SUBDIVISION OF PORTIONS OF LOT 119 AND LOT 212 OF "CLIFFS EDGE PARENT", BOOK 118 OF PLATS, AT PAGE 88, TOGETHER WITH ADDITIONAL ACREAGE, LOCATED WITHIN SECTION 24, TOWNSHIP 19 SOUTH, RANGE 59 EAST, M.O.M., CITY OF LAS VEGAS, CLARK COUNTY, NEVADA.

SEE SHEET 3 FOR CONTINUATION



FILE COPY



LEGEND:

- BOUNDARY LINE
- CENTERLINE
- DIAMETER SECTION LINE
- FRONT-OF-WAY LINE
- LOT LINE
- EASEMENT LINE
- C17 CURVE LABEL
- L79 CURVE LABEL
- R13 RADIAL LABEL
- S1 SQUARE FEET
- CL COMMON ELEMENT
- CL4 CITY OF LAS VEGAS

- SET 1/4" AND BRASS TAG "1/4" 1/2" 30" OR LARGER CUT TOP OF CURVE PER NOTE 1
- SET 3/8" REBAR AND ALUMINUM CAP STAMPED "7/8" P.S. 1/2" 30" 30" WITH INTERIOR DIMENSIONS "W" OR TOP OF CURVE
- FOUND AS INDICATED
- LOT NUMBER / RESIDENTIAL LOTS = 87
- COMMON LOT = 12
- NON-RESIDENTIAL LOT = 2
- TOTAL LOTS = 101
- DOCK NUMBER
- N4E AND BRASS TAG "1/4" 1/2" 30" PER "CLIFFS EDGE PARENT" BOOK 118, PAGE 88
- NOTICE VISIBILITY RESTRICTION SIGN (SEE NOTE 4)

NOTES:

- ALL NEAR LOT CORNERS SHALL BE SET WITH A BARR AND BRASS TAG "1/4" 1/2" 30" OR LARGER CUT TOP OF CURVE PER NOTE 1 AND ALL FROM DIAGONAL CORNERS ADDITIONAL FRONT-OF-WAY SHALL BE MARKED BY 3/4" OUTLINE OF THE BACK OF CURVE IN THE PROLONGATION OF THE PROPERTY LINES
 - SEE SHEET 4 FOR CURVE, COURSE, AND RADIAL TABLES
 - THE FOLLOWING SHORT STREETS ARE PRIVATE STREETS, ALSO KNOWN AS COMMON ELEMENT LOT "CL". PUBLIC UTILITY EASEMENTS TO BE PRIVATELY MAINTAINED BY THE HOMEOWNERS'S ASSOCIATION. PUBLIC UTILITY EASEMENTS TO U.S.C. AND CITY OF LAS VEGAS SHALL REMAIN.
- ROSECRANS STREET LOMA PORTAL AVENUE**
WHITFORD STREET DOMAN AVENUE
BOOMER BEACH STREET MULLINX AVENUE
KENSINGTON COVE STREET ULRICH AVENUE
FULBRIGHT AVENUE
- NO STRUCTURE, DETENTION OR OBJECT OF ANY KIND IS PERMITTED OVER TWENTY-FOUR (24) INCHES IN HEIGHT, MEASURED FROM TOP OF THE ADJACENT CURVE OR CURVE LOTS. NO CURVE EASTEL BE VESTMENT WILL BE FROM THE ADJACENT BEING SURFACE OF THE ADJACENT. PUBLIC CONTROL CURVE, THEIR RELATED APPURTENANCES AND STREET LIGHTS ILLUMINATING PUBLIC STREETS MAY BE PLACED WITHIN THE FRONT VISIBILITY RESTRICTION ZONE. THIS BE PRIVATELY MAINTAINED BY H.O.A.

RADIAL TABLE

NO.	BEARING	PLS.	PLS.
101	N00°00'00"E	2.00	2.00
102	N00°00'00"E	2.00	2.00
103	N00°00'00"E	2.00	2.00
104	N00°00'00"E	2.00	2.00
105	N00°00'00"E	2.00	2.00
106	N00°00'00"E	2.00	2.00
107	N00°00'00"E	2.00	2.00
108	N00°00'00"E	2.00	2.00
109	N00°00'00"E	2.00	2.00
110	N00°00'00"E	2.00	2.00
111	N00°00'00"E	2.00	2.00
112	N00°00'00"E	2.00	2.00
113	N00°00'00"E	2.00	2.00
114	N00°00'00"E	2.00	2.00
115	N00°00'00"E	2.00	2.00
116	N00°00'00"E	2.00	2.00
117	N00°00'00"E	2.00	2.00
118	N00°00'00"E	2.00	2.00
119	N00°00'00"E	2.00	2.00
120	N00°00'00"E	2.00	2.00
121	N00°00'00"E	2.00	2.00
122	N00°00'00"E	2.00	2.00
123	N00°00'00"E	2.00	2.00
124	N00°00'00"E	2.00	2.00
125	N00°00'00"E	2.00	2.00
126	N00°00'00"E	2.00	2.00
127	N00°00'00"E	2.00	2.00
128	N00°00'00"E	2.00	2.00
129	N00°00'00"E	2.00	2.00
130	N00°00'00"E	2.00	2.00
131	N00°00'00"E	2.00	2.00
132	N00°00'00"E	2.00	2.00
133	N00°00'00"E	2.00	2.00
134	N00°00'00"E	2.00	2.00
135	N00°00'00"E	2.00	2.00
136	N00°00'00"E	2.00	2.00
137	N00°00'00"E	2.00	2.00
138	N00°00'00"E	2.00	2.00
139	N00°00'00"E	2.00	2.00
140	N00°00'00"E	2.00	2.00
141	N00°00'00"E	2.00	2.00
142	N00°00'00"E	2.00	2.00
143	N00°00'00"E	2.00	2.00
144	N00°00'00"E	2.00	2.00
145	N00°00'00"E	2.00	2.00
146	N00°00'00"E	2.00	2.00
147	N00°00'00"E	2.00	2.00
148	N00°00'00"E	2.00	2.00
149	N00°00'00"E	2.00	2.00
150	N00°00'00"E	2.00	2.00

RADIAL TABLE

NO.	BEARING	PLS.	PLS.
101	N00°00'00"E	2.00	2.00
102	N00°00'00"E	2.00	2.00
103	N00°00'00"E	2.00	2.00
104	N00°00'00"E	2.00	2.00
105	N00°00'00"E	2.00	2.00
106	N00°00'00"E	2.00	2.00
107	N00°00'00"E	2.00	2.00
108	N00°00'00"E	2.00	2.00
109	N00°00'00"E	2.00	2.00
110	N00°00'00"E	2.00	2.00
111	N00°00'00"E	2.00	2.00
112	N00°00'00"E	2.00	2.00
113	N00°00'00"E	2.00	2.00
114	N00°00'00"E	2.00	2.00
115	N00°00'00"E	2.00	2.00
116	N00°00'00"E	2.00	2.00
117	N00°00'00"E	2.00	2.00
118	N00°00'00"E	2.00	2.00
119	N00°00'00"E	2.00	2.00
120	N00°00'00"E	2.00	2.00
121	N00°00'00"E	2.00	2.00
122	N00°00'00"E	2.00	2.00
123	N00°00'00"E	2.00	2.00
124	N00°00'00"E	2.00	2.00
125	N00°00'00"E	2.00	2.00
126	N00°00'00"E	2.00	2.00
127	N00°00'00"E	2.00	2.00
128	N00°00'00"E	2.00	2.00
129	N00°00'00"E	2.00	2.00
130	N00°00'00"E	2.00	2.00
131	N00°00'00"E	2.00	2.00
132	N00°00'00"E	2.00	2.00
133	N00°00'00"E	2.00	2.00
134	N00°00'00"E	2.00	2.00
135	N00°00'00"E	2.00	2.00
136	N00°00'00"E	2.00	2.00
137	N00°00'00"E	2.00	2.00
138	N00°00'00"E	2.00	2.00
139	N00°00'00"E	2.00	2.00
140	N00°00'00"E	2.00	2.00
141	N00°00'00"E	2.00	2.00
142	N00°00'00"E	2.00	2.00
143	N00°00'00"E	2.00	2.00
144	N00°00'00"E	2.00	2.00
145	N00°00'00"E	2.00	2.00
146	N00°00'00"E	2.00	2.00
147	N00°00'00"E	2.00	2.00
148	N00°00'00"E	2.00	2.00
149	N00°00'00"E	2.00	2.00
150	N00°00'00"E	2.00	2.00

RADIAL TABLE

NO.	BEARING	PLS.	PLS.
101	N00°00'00"E	2.00	2.00
102	N00°00'00"E	2.00	2.00
103	N00°00'00"E	2.00	2.00
104	N00°00'00"E	2.00	2.00
105	N00°00'00"E	2.00	2.00
106	N00°00'00"E	2.00	2.00
107	N00°00'00"E	2.00	2.00
108	N00°00'00"E	2.00	2.00
109	N00°00'00"E	2.00	2.00
110	N00°00'00"E	2.00	2.00
111	N00°00'00"E	2.00	2.00
112	N00°00'00"E	2.00	2.00
113	N00°00'00"E	2.00	2.00
114	N00°00'00"E	2.00	2.00
115	N00°00'00"E	2.00	2.00
116	N00°00'00"E	2.00	2.00
117	N00°00'00"E	2.00	2.00
118	N00°00'00"E	2.00	2.00
119	N00°00'00"E	2.00	2.00
120	N00°00'00"E	2.00	2.00
121	N00°00'00"E	2.00	2.00
122	N00°00'00"E	2.00	2.00
123	N00°00'00"E	2.00	2.00
124	N00°00'00"E	2.00	2.00
125	N00°00'00"E	2.00	2.00
126	N00°00'00"E	2.00	2.00
127	N00°00'00"E	2.00	2.00
128	N00°00'00"E	2.00	2.00
129	N00°00'00"E	2.00	2.00
130	N00°00'00"E	2.00	2.00
131	N00°00'00"E	2.00	2.00
132	N00°00'00"E	2.00	2.00
133	N00°00'00"E	2.00	2.00
134	N00°00'00"E	2.00	2.00
135	N00°00'00"E	2.00	2.00
136	N00°00'00"E	2.00	2.00
137	N00°00'00"E	2.00	2.00
138	N00°00'00"E	2.00	2.00
139	N00°00'00"E	2.00	2.00
140	N00°00'00"E	2.00	2.00
141	N00°00'00"E	2.00	2.00
142	N00°00'00"E	2.00	2.00
143	N00°00'00"E	2.00	2.00
144	N00°00'00"E	2.00	2.00
145	N00°00'00"E	2.00	2.00
146	N00°00'00"E	2.00	2.00
147	N00°00'00"E	2.00	2.00
148	N00°00'00"E	2.00	2.00
149	N00°00'00"E	2.00	2.00
150	N00°00'00"E	2.00	2.00

COURSE TABLE

NO.	BEARING	PLS.	PLS.
101	N00°00'00"E	2.00	2.00
102	N00°00'00"E	2.00	2.00
103	N00°00'00"E	2.00	2.00
104	N00°00'00"E	2.00	2.00
105	N00°00'00"E	2.00	2.00
106	N00°00'00"E	2.00	2.00
107	N00°00'00"E	2.00	2.00
108	N00°00'00"E	2.00	2.00
109	N00°00'00"E	2.00	2.00
110	N00°00'00"E	2.00	2.00
111	N00°00'00"E	2.00	2.00
112	N00°00'00"E	2.00	2.00
113	N00°00'00"E	2.00	2.00
114	N00°00'00"E	2.00	2.00
115	N00°00'00"E	2.00	2.00
116	N00°00'00"E	2.00	2.00
117	N00°00'00"E	2.00	2.00
118	N00°00'00"E	2.00	2.00
119	N00°00'00"E	2.00	2.00
120	N00°00'00"E	2.00	2.00
121	N00°00'00"E	2.00	2.00
122	N00°00'00"E	2.00	2.00
123	N00°00'00"E	2.00	2.00
124	N00°00'00"E	2.00	2.00
125	N00°00'00"E	2.00	2.00
126	N00°00'00"E	2.00	2.00
127	N00°00'00"E	2.00	2.00
128	N00°00'00"E	2.00	2.00
129	N00°00'00"E	2.00	2.00
130	N00°00'00"E	2.00	2.00
131	N00°00'00"E	2.00	2.00
132	N00°00'00"E	2.00	2.00
133	N00°00'00"E	2.00	2.00
134	N00°00'00"E	2.00	2.00
135	N00°00'00"E	2.00	2.00
136	N00°00'00"E	2.00	2.00
137	N00°00'00"E	2.00	2.00
138	N00°00'00"E	2.00	2.00
139	N00°00'00"E	2.00	2.00
140	N00°00'00"E	2.00	2.00
141	N00°00'00"E	2.00	2.00
142	N00°00'00"E	2.00	2.00
143	N00°00'00"E	2.00	2.00
144	N00°00'00"E	2.00	2.00
145	N00°00'00"E	2.00	2.00
146	N00°00'00"E	2.00	2.00
147	N00°00'00"E	2.00	2.00
148	N00°00'00"E	2.00	2.00
149	N00°00'00"E	2.00	2.00
150	N00°00'00"E	2.00	2.00

CURVE TABLE

NO.	RADIUS	CHORD	CHORD BEHIND	TANGENT
C1	100.00	100.00	0.00	0.00
C2	100.00	114.74	14.74	70.71
C3	100.00	132.00	32.00	126.87
C4	100.00	151.57	51.57	177.13
C5	100.00	173.21	73.21	231.41
C6	100.00	196.78	96.78	289.65
C7	100.00	222.14	122.14	351.81
C8	100.00	249.14	149.14	417.95
C9	100.00	277.64	177.64	488.13
C10	100.00	307.50	207.50	562.41
C11	100.00	338.69	238.69	640.85
C12	100.00	371.08	271.08	723.51
C13	100.00	404.54	304.54	810.45
C14	100.00	439.04	339.04	901.83
C15	100.00	474.54	374.54	997.71
C16	100.00	511.01	411.01	1098.15
C17	100.00	548.41	448.41	1203.21
C18	100.00	586.71	486.71	1312.95
C19	100.00	625.89	525.89	1426.43
C20	100.00	665.91	565.91	1543.71
C21	100.00	706.74	606.74	1664.95
C22	100.00	748.34	648.34	1790.21
C23	100.00	790.69	690.69	1919.55
C24	100.00	833.76	733.76	2053.03

BRIGHTON & KENSINGTON @ PROVIDENCE/CLIFFS EDGE - UNIT 2

Recorded in Book 132 Page 053 of Plats

MASTER SITE ADDRESS: 10420 DORRELL LN

Fire Department District Map Number:

01514-23

<u>Block</u>	<u>Lot</u>	<u>Address</u>
7	181	10536 FULBRIGHT AVE
	182	10532
	183	7119 ROSECRANS ST
	184	7123
	185	7131
	186	7135
	187	7139
	188	7143
	189	7147
	190	7155
	191	7159
	192	10528 LOMA PORTAL AVE
	193	10524
	194	10520
	195	10516
	196	10512
	197	10508
	198	10504
	199	10432
	200	10428
	201	10424
	202	10420
	203	10416
	204	10412
	205	10408
	206	7160 WHITFORD ST
	207	7156
	208	7148
	209	7144
	210	7140

BRIGHTON & KENSINGTON @ PROVIDENCE/CLIFFS EDGE - UNIT 2

Recorded in Book 132 Page 053 of Plats

MASTER SITE ADDRESS: 10420 DORRELL LN

Fire Department District Map Number:

01514-23

<u>Block</u>	<u>Lot</u>	<u>Address</u>	
7	211	7136	WHITFORD ST
	212	7132	
	213	7124	
	214	7120	
	215	7116	
	216	7112	
	217	7108	
	218	7048	
	219	7044	
	220	7040	
	221	7036	
	222	7032	
	223	7024	
	224	7020	
	225	7014	
	226	7010	
	227	7006	
	228	7007	
	229	7011	
	230	7015	
	231	7021	
	232	7025	
	233	7033	
5	234	10424	MULLINIX AVE
	235	10428	
	244	7123	BOOMER BEACH ST
	245	7119	
	246	7115	
	247	7111	
	248	10427	ULRIC AVE

BRIGHTON & KENSINGTON @ PROVIDENCE/CLIFFS EDGE - UNIT 2

Recorded in Book 132 Page 053 of Plats

MASTER SITE ADDRESS: 10420 DORRELL LN

Fire Department District Map Number:

01514-23

<u>Block</u>	<u>Lot</u>	<u>Address</u>
5	249	10423 ULRIC AVE
	250	10417
	251	10413
	252	10409
	253	10405
	6	254
255		7117
256		7121
257		7125
258		7129
259		7133
260		7137
261		7141
262		10417 LOMA PORTAL AVE
263		10421
264		10425
265		10429
266		10503
267		10507
268		10511
269		10515
270		10519
271		10523
272		7132 ROSECRANS ST
273	7128	
274	7124	
275	7120	
276	7116	
277	7112	
287	10428 DOMAN AVE	

BRIGHTON & KENSINGTON @ PROVIDENCE/CLIFFS EDGE - UNIT 2

Recorded in Book 132 Page 053 of Plats

MASTER SITE ADDRESS: 10420 DORRELL LN

Fire Department District Map Number:

01514-23

<u>Block</u>	<u>Lot</u>	<u>Address</u>
6	288	10424 DOMAN AVE
	289	10420
	290	10416
	291	7124 BOOMER BEACH ST
	292	7120
	293	7116
	294	7112

Greg Kapovich, Planner I

