

MONUMENT @ LONE MOUNTAIN - UNIT 2

Recorded in Book 101 Page 18 of Plats

200 Scale Map Location: K-1-1

Fire Dept. District Map # 1814:24, 25

MASTER SITE ADDRESS: 10419 PEACEFUL DAWN AVE

BLOCK 4	LOT	179	10402	MORNING DROP AVE	E/W	PRIVATE STREET
		180	10406			
		181	10410			
		182	10414			
		183	10418			
		184	10422			
		185	10426			
		186	10500			
		187	10504			
		188	10508			
		189	10512			
		190	10516			
		201	10517			
		202	10513			
		203	10509			
		204	10505			
BLOCK 4	LOT	219	10504	GLOWING COVE AVE	E/W	PRIVATE STREET
		220	10508			
BLOCK 5	LOT	205	10425	MORNING DROP AVE	E/W	PRIVATE STREET
		206	10421			
		207	10417			
		208	10413			
		209	10409			
		210	10405			
		211	10401			
BLOCK 5	LOT	212	10402	GLOWING COVE AVE	E/W	PRIVATE STREET
		213	10406			
		214	10410			
		215	10414			
		216	10418			
		217	10422			
		218	10426			
BLOCK 6	LOT	16	10509	GLOWING COVE AVE	E/W	PRIVATE STREET
		17	10505			
BLOCK 6	LOT	18	4613	RISING COVE ST	N/S	PRIVATE STREET
		19	4609			
		20	4605			
		21	4601			
		22	4602			
		23	4606			
		24	4610			
		25	4614			
BLOCK 6	LOT	26	10425	GLOWING COVE AVE	E/W	PRIVATE STREET

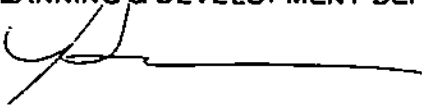
MONUMENT @ LONE MOUNTAIN – UNIT 2

BLOCK 6	LOT	27	10421	GLOWING COVE AVE	E/W	PRIVATE STREET
		28	10417			
		29	10413			
		30	10409			
		31	10405			
		32	10401			
BLOCK 7	LOT	168	4616	YELLOW HARBOR ST	N/S	PRIVATE STREET
		169	4620			
		170	4624			
		171	4628			
		172	4632			
		173	4636			
		174	4640			
		175	4644			
		176	4648			
		177	4652			
		178	4656			
Common Area		2A	10395	PEACEFUL DAWN AVE	E/W	PUBLIC STREET
		2B	10425			
Common Area		2C	4635	RISING COVE ST	N/S	PRIVATE STREET
		2D	4600			
Common Area		2E	10385	PEACEFUL DAWN AVE	E/W	PUBLIC STREET

There are no addresses on: RED COACH AVENUE (E/W Public Street),
SHAUMBER ROAD or BRADEN ROAD (N/S Public Streets).

ORIGINAL DATE: 8/03/2001

CITY OF LAS VEGAS
PLANNING & DEVELOPMENT DEPARTMENT



PAUL BENGTSON, PLANNER I

MONUMENT @ LONE MOUNTAIN – UNIT 2

Recorded in Book 101 Page 18 of Plats

200 Scale Map Location: K-1-1

Fire Dept. District Map # 1814:24, 25

MASTER SITE ADDRESS: 10419 PEACEFUL DAWN AVE

BLOCK 4	LOT	179	10402	MORNING DROP AVE	E/W	PRIVATE STREET
		180	10406			
		181	10410			
		182	10414			
		183	10418			
		184	10422			
		185	10426			
		186	10500			
		187	10504			
		188	10508			
		189	10512			
		190	10516			
		201	10517			
		202	10513			
		203	10509			
		204	10505			
BLOCK 4	LOT	219	10504	GLOWING COVE AVE	E/W	PRIVATE STREET
		220	10508			
BLOCK 5	LOT	205	10425	MORNING DROP AVE	E/W	PRIVATE STREET
		206	10421			
		207	10417			
		208	10413			
		209	10409			
		210	10405			
		211	10401			
BLOCK 5	LOT	212	10402	GLOWING COVE AVE	E/W	PRIVATE STREET
		213	10406			
		214	10410			
		215	10414			
		216	10418			
		217	10422			
		218	10426			
BLOCK 6	LOT	16	10509	GLOWING COVE AVE	E/W	PRIVATE STREET
		17	10505			
BLOCK 6	LOT	18	4613	RISING COVE ST	N/S	PRIVATE STREET
		19	4609			
		20	4605			
		21	4601			
		22	4602			
		23	4606			
		24	4610			
		25	4614			
BLOCK 6	LOT	26	10425	GLOWING COVE AVE	E/W	PRIVATE STREET

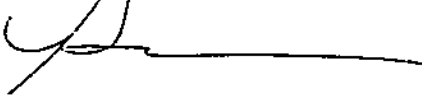
MONUMENT @ LONE MOUNTAIN – UNIT 2

BLOCK 6	LOT	27	10421	GLOWING COVE AVE	E/W	PRIVATE STREET
		28	10417			
		29	10413			
		30	10409			
		31	10405			
		32	10401			
BLOCK 7	LOT	168	4616	YELLOW HARBOR ST	N/S	PRIVATE STREET
		169	4620			
		170	4624			
		171	4628			
		172	4632			
		173	4636			
		174	4640			
		175	4644			
		176	4648			
		177	4652			
		178	4656			
Common Area		2A	10395	PEACEFUL DAWN AVE	E/W	PUBLIC STREET
		2B	10425			
Common Area		2C	4635	RISING COVE ST	N/S	PRIVATE STREET
		2D	4600			
Common Area		2E	10385	PEACEFUL DAWN AVE	E/W	PUBLIC STREET

There are no addresses on: RED COACH AVENUE (E/W Public Street),
SHAUMBER ROAD or BRADEN ROAD (N/S Public Streets).

ORIGINAL DATE: 8/03/2001

CITY OF LAS VEGAS
PLANNING & DEVELOPMENT DEPARTMENT



PAUL BENGTS DN, PLANNER I

MONUMENT @ LONE MOUNTAIN – UNIT 2

Recorded in Book 101 Page 18 of Plats

200 Scale Map Location: K-1-1

Fire Dept. District Map # 1814:24, 25

MASTER SITE ADDRESS: 10419 PEACEFUL DAWN AVE

BLOCK 4	LOT	179	10402	MORNING DROP AVE	E/W	PRIVATE STREET
		180	10406			
		181	10410			
		182	10414			
		183	10418			
		184	10422			
		185	10426			
		186	10500			
		187	10504			
		188	10508			
		189	10512			
		190	10516			
		201	10517			
		202	10513			
		203	10509			
		204	10505			
BLOCK 4	LOT	219	10504	GLOWING COVE AVE	E/W	PRIVATE STREET
		220	10508			
BLOCK 5	LOT	205	10425	MORNING DROP AVE	E/W	PRIVATE STREET
		206	10421			
		207	10417			
		208	10413			
		209	10409			
		210	10405			
		211	10401			
BLOCK 5	LOT	212	10402	GLOWING COVE AVE	E/W	PRIVATE STREET
		213	10406			
		214	10410			
		215	10414			
		216	10418			
		217	10422			
		218	10426			
BLOCK 6	LOT	16	10509	GLOWING COVE AVE	E/W	PRIVATE STREET
		17	10505			
BLOCK 6	LOT	18	4613	RISING COVE ST	N/S	PRIVATE STREET
		19	4609			
		20	4605			
		21	4601			
		22	4602			
		23	4606			
		24	4610			
		25	4614			
BLOCK 6	LOT	26	10425	GLOWING COVE AVE	E/W	PRIVATE STREET

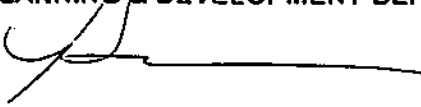
MONUMENT @ LONE MOUNTAIN – UNIT 2

BLOCK 6	LOT	27	10421	GLOWING COVE AVE	E/W	PRIVATE STREET
		28	10417			
		29	10413			
		30	10409			
		31	10405			
		32	10401			
BLOCK 7	LOT	168	4616	YELLOW HARBOR ST	N/S	PRIVATE STREET
		169	4620			
		170	4624			
		171	4628			
		172	4632			
		173	4636			
		174	4640			
		175	4644			
		176	4648			
		177	4652			
		178	4656			
Common Area		2A	10395	PEACEFUL DAWN AVE	E/W	PUBLIC STREET
		2B	10425			
Common Area		2C	4635	RISING COVE ST	N/S	PRIVATE STREET
		2D	4600			
Common Area		2E	10385	PEACEFUL DAWN AVE	E/W	PUBLIC STREET

There are no addresses on: RED COACH AVENUE (E/W Public Street),
SHAUMBER ROAD or BRADEN ROAD (N/S Public Streets).

ORIGINAL DATE: 8/03/2001

CITY OF LAS VEGAS
PLANNING & DEVELOPMENT DEPARTMENT



PAUL BENGTON, PLANNER I

MONUMENT @ LONE MOUNTAIN – UNIT 2

Recorded in Book 101 Page 18 of Plats

200 Scale Map Location: K-1-1

Fire Dept. District Map # 1814:24, 25

MASTER SITE ADDRESS: 10419 PEACEFUL DAWN AVE

BLOCK 4	LOT	179	10402	MORNING DROP AVE	E/W	PRIVATE STREET
		180	10406			
		181	10410			
		182	10414			
		183	10418			
		184	10422			
		185	10426			
		186	10500			
		187	10504			
		188	10508			
		189	10512			
		190	10516			
		201	10517			
		202	10513			
		203	10509			
		204	10505			
BLOCK 4	LOT	219	10504	GLOWING COVE AVE	E/W	PRIVATE STREET
		220	10508			
BLOCK 5	LOT	205	10425	MORNING DROP AVE	E/W	PRIVATE STREET
		206	10421			
		207	10417			
		208	10413			
		209	10409			
		210	10405			
		211	10401			
BLOCK 5	LOT	212	10402	GLOWING COVE AVE	E/W	PRIVATE STREET
		213	10406			
		214	10410			
		215	10414			
		216	10418			
		217	10422			
		218	10426			
BLOCK 6	LOT	16	10509	GLOWING COVE AVE	E/W	PRIVATE STREET
		17	10505			
BLOCK 6	LOT	18	4613	RISING COVE ST	N/S	PRIVATE STREET
		19	4609			
		20	4605			
		21	4601			
		22	4602			
		23	4606			
		24	4610			
		25	4614			
BLOCK 6-	LOT	26	10425	GLOWING COVE AVE	E/W	PRIVATE STREET

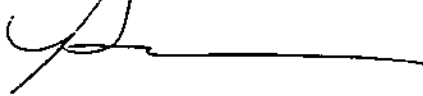
MONUMENT @ LONE MOUNTAIN – UNIT 2

BLOCK 6	LOT	27	10421	GLOWING COVE AVE	E/W	PRIVATE STREET
		28	10417			
		29	10413			
		30	10409			
		31	10405			
		32	10401			
BLOCK 7	LOT	168	4616	YELLOW HARBOR ST	N/S	PRIVATE STREET
		169	4620			
		170	4624			
		171	4628			
		172	4632			
		173	4636			
		174	4640			
		175	4644			
		176	4648			
		177	4652			
		178	4656			
Common Area		2A	10395	PEACEFUL DAWN AVE	E/W	PUBLIC STREET
		2B	10425			
Common Area		2C	4635	RISING COVE ST	N/S	PRIVATE STREET
		2D	4600			
Common Area		2E	10385	PEACEFUL DAWN AVE	E/W	PUBLIC STREET

There are no addresses on: RED COACH AVENUE (E/W Public Street),
SHAUMBER ROAD or BRADEN ROAD (N/S Public Streets).

ORIGINAL DATE: 8/03/2001

CITY OF LAS VEGAS
PLANNING & DEVELOPMENT DEPARTMENT

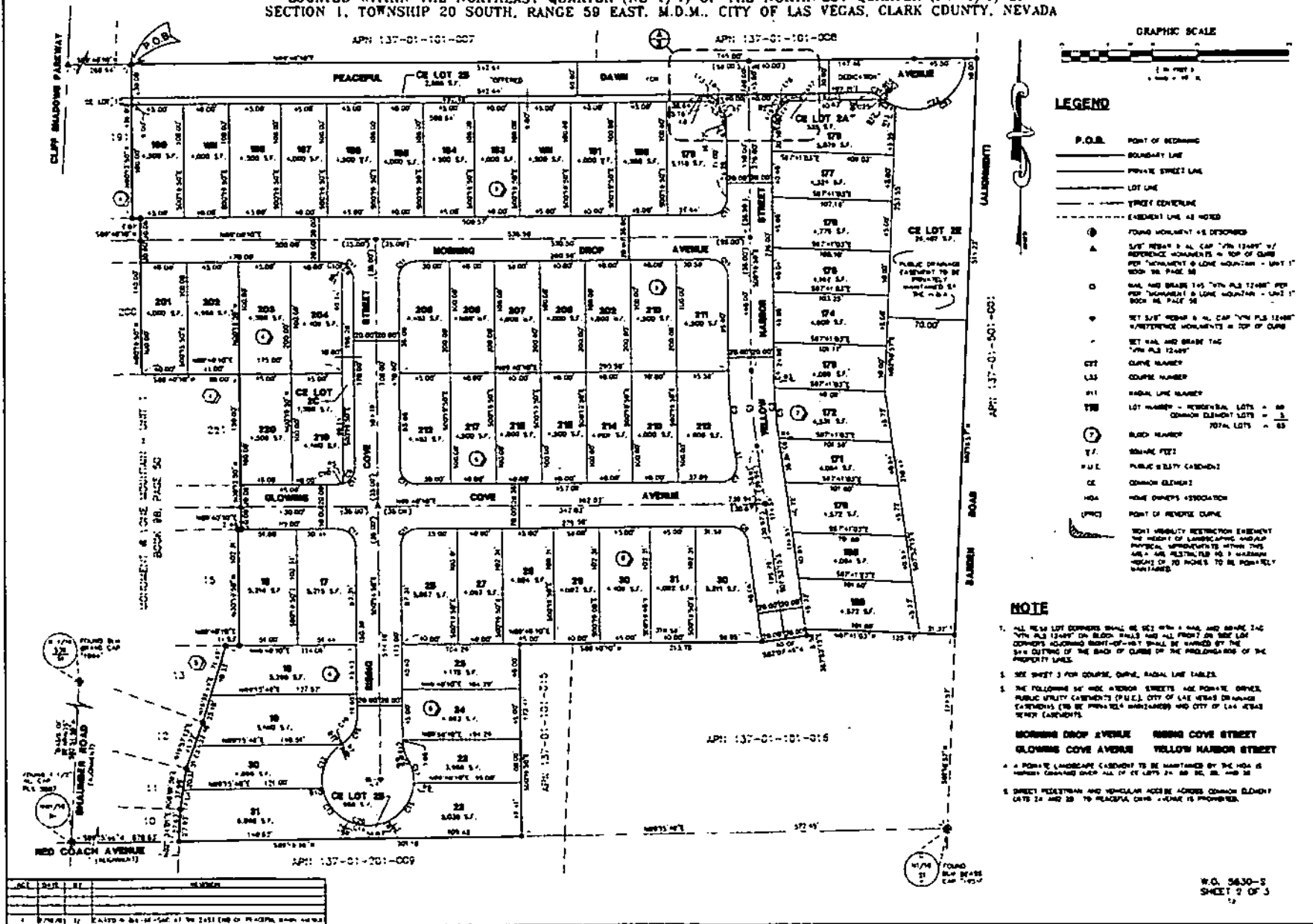


PAUL BENGTSON, PLANNER I

FILE COPY

MONUMENT @ LONE MOUNTAIN - UNIT 2

(A COMMON INTEREST COMMUNITY)
 LOCATED WITHIN THE NORTHEAST QUARTER (NE 1/4) OF THE NORTHWEST QUARTER (NW 1/4) OF SECTION 1, TOWNSHIP 20 SOUTH, RANGE 59 EAST, M.D.M., CITY OF LAS VEGAS, CLARK COUNTY, NEVADA



- LEGEND**
- P.O.B. POINT OF BEGINNING
 - BOUNDARY LINE
 - PRIVATE STREET LINE
 - LOT LINE
 - STREET CENTERLINE
 - EASEMENT LINE AS NOTED
 - ⊙ FOUND MONUMENT AS NOTED
 - ▲ SET 1/2" REBAR 3" AL CAP "1/4" PL 12" DIA" W/ REFERENCE ADJUSTMENTS = TOP OF CURB FOR "MORNING @ LONE MOUNTAIN - UNIT 1" BOOK 38 PAGE 58
 - SET 1/2" REBAR 1 1/2" DIA "1/4" PL 12" DIA" PER PER "MORNING @ LONE MOUNTAIN - UNIT 1" BOOK 38 PAGE 58
 - SET 1/2" REBAR 3" AL CAP "1/4" PL 12" DIA" W/ REFERENCE ADJUSTMENTS = TOP OF CURB
 - SET 1/2" REBAR 1 1/2" DIA "1/4" PL 12" DIA"
 - ○ ○ CURVE NUMBER
 - ○ ○ CURVE NUMBER
 - ○ ○ RADIAL LINE NUMBER
 - ○ ○ LOT NUMBER - REFERENCE LOTS = 80
COMMON ELEMENT LOTS = 1
TOTAL LOTS = 81
 - ○ ○ BUSH NUMBER
 - ○ ○ SIGNAGE FEET
 - ○ ○ PUBLIC UTILITY CASHEMENT
 - ○ ○ COMMON ELEMENT
 - ○ ○ HOME OWNERS ASSOCIATION
 - ○ ○ POINT OF PRIVATE CURVE
 - ○ ○ POINT OF RESTRICTION EASEMENT
THE HEIGHT OF LANDSCAPE AND ALL PHYSICAL IMPROVEMENTS WITHIN THIS AREA ARE RESTRICTED AS A MAINTENANCE HEIGHT OF 20 FEET TO BE PROMINELY MAINTAINED

- NOTE**
- ALL NEW LOT OWNERS SHALL SET WITH A FLAG AND MARK THE "1/4" PL 12" DIA" ON BLOCK WALLS AND ALL FRONT OR SIDE LOT CORNERS ACCORDING NORTH-OF-WAY SHALL BE MARKED BY THE 3/4" CUTTING OF THE BACK OF CURB OF THE PROLONGATION OF THE PROPERTY LINES.
 - SEE SHEET 3 FOR CURVE, CHAIN, RADIAL LINE TABLES.
 - THE FOLLOWING SET BACK AND FRONT STREETS ARE PRIVATE DRIVE PUBLIC UTILITY CASHEMENTS (P.U.C.), CITY OF LAS VEGAS DRIVING CASHEMENTS (D.C.) BE PROMINELY MAINTAINED AND CITY OF LAS VEGAS NEIGHBORHOODS.
- MORNING DROP AVENUE HARBOR COVE STREET**
GLOWING COVE AVENUE YELLOW HARBOR STREET
- A PRIVATE LANDSCAPE CASHEMENT TO BE MAINTAINED BY THE HOA IS SHOWN CONTAINING OVER ALL OF LOTS 24, 25, 26, 27, 28 AND 29.
 - STREET RESTRICTION AND VEHICULAR ACCESS ACROSS COMMON ELEMENT LOTS 24 AND 25 TO PEACEMA DRIVE - DRIVE IS PROVIDED.

LOT	SUR.	BT.	NUMBER
1	1/4" PL 12" DIA	120.00'	1
2	1/4" PL 12" DIA	120.00'	2
3	1/4" PL 12" DIA	120.00'	3
4	1/4" PL 12" DIA	120.00'	4
5	1/4" PL 12" DIA	120.00'	5
6	1/4" PL 12" DIA	120.00'	6
7	1/4" PL 12" DIA	120.00'	7
8	1/4" PL 12" DIA	120.00'	8
9	1/4" PL 12" DIA	120.00'	9
10	1/4" PL 12" DIA	120.00'	10
11	1/4" PL 12" DIA	120.00'	11
12	1/4" PL 12" DIA	120.00'	12
13	1/4" PL 12" DIA	120.00'	13
14	1/4" PL 12" DIA	120.00'	14
15	1/4" PL 12" DIA	120.00'	15
16	1/4" PL 12" DIA	120.00'	16
17	1/4" PL 12" DIA	120.00'	17
18	1/4" PL 12" DIA	120.00'	18
19	1/4" PL 12" DIA	120.00'	19
20	1/4" PL 12" DIA	120.00'	20
21	1/4" PL 12" DIA	120.00'	21
22	1/4" PL 12" DIA	120.00'	22
23	1/4" PL 12" DIA	120.00'	23
24	1/4" PL 12" DIA	120.00'	24
25	1/4" PL 12" DIA	120.00'	25
26	1/4" PL 12" DIA	120.00'	26
27	1/4" PL 12" DIA	120.00'	27
28	1/4" PL 12" DIA	120.00'	28
29	1/4" PL 12" DIA	120.00'	29
30	1/4" PL 12" DIA	120.00'	30
31	1/4" PL 12" DIA	120.00'	31
32	1/4" PL 12" DIA	120.00'	32
33	1/4" PL 12" DIA	120.00'	33
34	1/4" PL 12" DIA	120.00'	34
35	1/4" PL 12" DIA	120.00'	35
36	1/4" PL 12" DIA	120.00'	36
37	1/4" PL 12" DIA	120.00'	37
38	1/4" PL 12" DIA	120.00'	38
39	1/4" PL 12" DIA	120.00'	39
40	1/4" PL 12" DIA	120.00'	40
41	1/4" PL 12" DIA	120.00'	41
42	1/4" PL 12" DIA	120.00'	42
43	1/4" PL 12" DIA	120.00'	43
44	1/4" PL 12" DIA	120.00'	44
45	1/4" PL 12" DIA	120.00'	45
46	1/4" PL 12" DIA	120.00'	46
47	1/4" PL 12" DIA	120.00'	47
48	1/4" PL 12" DIA	120.00'	48
49	1/4" PL 12" DIA	120.00'	49
50	1/4" PL 12" DIA	120.00'	50
51	1/4" PL 12" DIA	120.00'	51
52	1/4" PL 12" DIA	120.00'	52
53	1/4" PL 12" DIA	120.00'	53
54	1/4" PL 12" DIA	120.00'	54
55	1/4" PL 12" DIA	120.00'	55
56	1/4" PL 12" DIA	120.00'	56
57	1/4" PL 12" DIA	120.00'	57
58	1/4" PL 12" DIA	120.00'	58
59	1/4" PL 12" DIA	120.00'	59
60	1/4" PL 12" DIA	120.00'	60
61	1/4" PL 12" DIA	120.00'	61
62	1/4" PL 12" DIA	120.00'	62
63	1/4" PL 12" DIA	120.00'	63
64	1/4" PL 12" DIA	120.00'	64
65	1/4" PL 12" DIA	120.00'	65
66	1/4" PL 12" DIA	120.00'	66
67	1/4" PL 12" DIA	120.00'	67
68	1/4" PL 12" DIA	120.00'	68
69	1/4" PL 12" DIA	120.00'	69
70	1/4" PL 12" DIA	120.00'	70
71	1/4" PL 12" DIA	120.00'	71
72	1/4" PL 12" DIA	120.00'	72
73	1/4" PL 12" DIA	120.00'	73
74	1/4" PL 12" DIA	120.00'	74
75	1/4" PL 12" DIA	120.00'	75
76	1/4" PL 12" DIA	120.00'	76
77	1/4" PL 12" DIA	120.00'	77
78	1/4" PL 12" DIA	120.00'	78
79	1/4" PL 12" DIA	120.00'	79
80	1/4" PL 12" DIA	120.00'	80
81	1/4" PL 12" DIA	120.00'	81
82	1/4" PL 12" DIA	120.00'	82
83	1/4" PL 12" DIA	120.00'	83
84	1/4" PL 12" DIA	120.00'	84
85	1/4" PL 12" DIA	120.00'	85
86	1/4" PL 12" DIA	120.00'	86
87	1/4" PL 12" DIA	120.00'	87
88	1/4" PL 12" DIA	120.00'	88
89	1/4" PL 12" DIA	120.00'	89
90	1/4" PL 12" DIA	120.00'	90
91	1/4" PL 12" DIA	120.00'	91
92	1/4" PL 12" DIA	120.00'	92
93	1/4" PL 12" DIA	120.00'	93
94	1/4" PL 12" DIA	120.00'	94
95	1/4" PL 12" DIA	120.00'	95
96	1/4" PL 12" DIA	120.00'	96
97	1/4" PL 12" DIA	120.00'	97
98	1/4" PL 12" DIA	120.00'	98
99	1/4" PL 12" DIA	120.00'	99
100	1/4" PL 12" DIA	120.00'	100

W.O. 5630-S
 SHEET 2 OF 3