

# MONUMENT @ LONE MOUNTAIN - UNIT 3

Recorded in Book 107 Page 89 of Plats

200 Scale Map Location: K-1-3

Fire Dept. District Map # 1814:35

MASTER SITE ADDRESS: 10404 STANGE AVE

BLOCK 6	LOT	33	10400	GOLDEN REFLECTION	CT	E/W	PRIVATE STREET
		34	10404				
		35	10408				
		36	10412				
		37	10413				
		38	10409				
		39	10405				
		40	10401				
BLOCK 6	LOT	41	10400	ORANGE PORT	CT	E/W	PRIVATE STREET
		42	10404				
		43	10408				
		44	10412				
		45	10413				
		46	10409				
		47	10405				
		48	10401				
BLOCK 6	LOT	49	10400	DAISY DAWN	CT	E/W	PRIVATE STREET
		50	10404				
		51	10408				
		52	10412				
		53	10413				
		54	10409				
		55	10405				
		56	10401				
BLOCK 7	LOT	148	4500	YELLOW HARBOR	ST	N/S	PRIVATE STREET
		149	4504				
		150	4508				
		151	4512				
		152	4516				
		153	4524				
		154	4528				
		155	4532				
		156	4536				
		157	4540				
		158	4544				
		159	4548				
		160	4552				
		161	4556				
		162	4560				
		163	4564				
		164	4568				
		165	4572				
		166	4576				
		167	4580				
Common Area		3A	4507	YELLOW HARBOR	ST	N/S	PRIVATE STREET

## MONUMENT @ LONE MOUNTAIN - UNIT 3

Common Area	3B	10418	DAISY DAWN CT	E/W,	PRIVATE STREET
Common Area	3C	10418	ORANGE PORT CT	E/W	PRIVATE STREET
Common Area	3D, 3E	4578 4520	YELLOW HARBOR ST	N/S	PRIVATE STREET

There are no addresses on BARDEN ROAD ALIGNMENT.

ORIGINAL DATE: 11/27/2002

CITY OF LAS VEGAS  
PLANNING & DEVELOPMENT DEPARTMENT



PATRICK D MURPHY, PLANNER I

# MONUMENT @ LONE MOUNTAIN - UNIT 3

Recorded in Book 107 Page 89 of Plats

200 Scaia Map Location: K-1-3

Fire Dept. District Map # 1814:35

MASTER SITE ADDRESS: 10404 STANGE AVE

BLOCK 6	LOT	33	10400	GOLDEN REFLECTION CT	EW	PRIVATE STREET
		34	10404			
		35	10408			
		36	10412			
		37	10413			
		38	10409			
		39	10405			
		40	10401			
BLOCK 6	LOT	41	10400	ORANGE PORT CT	EW	PRIVATE STREET
		42	10404			
		43	10408			
		44	10412			
		45	10413			
		46	10409			
		47	10405			
		48	10401			
BLOCK 6	LOT	49	10400	DAISY DAWN CT	EW	PRIVATE STREET
		50	10404			
		51	10408			
		52	10412			
		53	10413			
		54	10409			
		55	10405			
		56	10401			
BLOCK 7	LOT	148	4500	YELLOW HARBOR ST	N/S	PRIVATE STREET
		149	4504			
		150	4508			
		151	4512			
		152	4516			
		153	4524			
		154	4528			
		155	4532			
		156	4536			
		157	4540			
		158	4544			
		159	4548			
		160	4552			
		161	4556			
		162	4560			
		163	4564			
		164	4568			
		165	4572			
		166	4576			
		167	4580			
Common Area		3A	4507	YELLOW HARBOR ST	N/S	PRIVATE STREET

## MONUMENT @ LONE MOUNTAIN - UNIT 3

Common Area	3B	10418	DAISY DAWN CT	EW	PRIVATE STREET
Common Area	3C	10418	ORANGE PORT CT	EW	PRIVATE STREET
Common Area	3D	4578	YELLOW HARBOR ST	N/S	PRIVATE STREET
	3E	4520			

There are no addresses on BARDEN ROAD ALIGNMENT.

ORIGINAL DATE: 11/27/2002

CITY OF LAS VEGAS  
PLANNING & DEVELOPMENT DEPARTMENT



PATRICK D MURPHY, PLANNER I

# MONUMENT @ LONE MOUNTAIN - UNIT 3

Recorded in Book 107 Page 89 of Plats

200 Scale Map Location: K-1-3

Fire Dept. District Map # 1814:35

MASTER SITE ADDRESS: 10404 STANGE AVE

BLOCK 6	LOT	33	10400	GOLDEN REFLECTION CT	EW	PRIVATE STREET
		34	10404			
		35	10408			
		36	10412			
		37	10413			
		38	10409			
		39	10405			
		40	10401			
BLOCK 6	LOT	41	10400	ORANGE PORT CT	EW	PRIVATE STREET
		42	10404			
		43	10408			
		44	10412			
		45	10413			
		46	10409			
		47	10405			
		48	10401			
BLOCK 6	LOT	49	10400	DAISY DAWN CT	EW	PRIVATE STREET
		50	10404			
		51	10408			
		52	10412			
		53	10413			
		54	10409			
		55	10405			
		56	10401			
BLOCK 7	LOT	148	4500	YELLOW HARBOR ST	N/S	PRIVATE STREET
		149	4504			
		150	4508			
		151	4512			
		152	4516			
		153	4524			
		154	4528			
		155	4532			
		156	4536			
		157	4540			
		158	4544			
		159	4548			
		160	4552			
		161	4556			
		162	4560			
		163	4564			
		164	4568			
		165	4572			
		166	4576			
		167	4580			
Common Area		3A	4507	YELLOW HARBOR ST	N/S	PRIVATE STREET

## MONUMENT @ LONE MOUNTAIN - UNIT 3

Common Area	3B	10418	DAISY DAWN CT	E/W	PRIVATE STREET
Common Area	3C	10418	ORANGE PORT CT	E/W	PRIVATE STREET
Common Area	3D	4578	YELLOW HARBOR ST	N/S	PRIVATE STREET
	3E	4520			

There are no addresses on BARDEN ROAD ALIGNMENT.

ORIGINAL DATE: 11/27/2002

CITY OF LAS VEGAS  
PLANNING & DEVELOPMENT DEPARTMENT



PATRICK D MURPHY, PLANNER I

*File Copy*

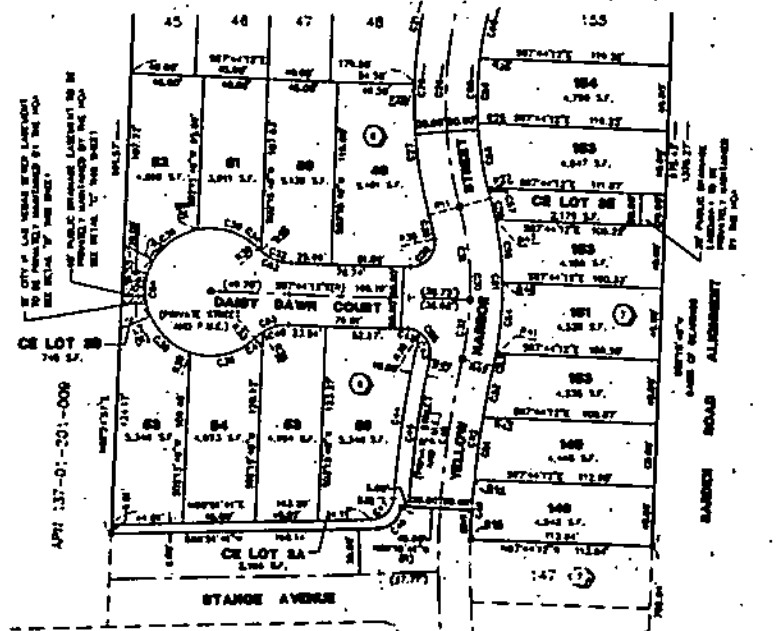
# MONUMENT @ LONE MOUNTAIN - UNIT 3

(A COMMON INTEREST COMMUNITY)  
 LOCATED WITHIN THE NORTHEAST QUARTER (NE 1/4) OF THE NORTHWEST QUARTER (NW 1/4)  
 AND THE SOUTHEAST QUARTER (SE 1/4) OF THE NORTHWEST QUARTER (NW 1/4) OF SECTION 1,  
 TOWNSHIP 20 SOUTH, RANGE 59 EAST, M.D.M., CITY OF LAS VEGAS, CLARK COUNTY, NEVADA

## LEGEND

- BOUNDARY LINE
- LOT LINE
- PRIVATE STREET LINE
- PRIVATE STREET CENTERLINE
- EASEMENT LINE
- FOUND MONUMENT AS DESCRIBED
- N.W. AND BRASS IAN "VIN PL3 11447" PER "MONUMENT @ LONE MOUNTAIN - UNIT 2" BOOK 108, PAGE 28
- SET 3/4" IRON P & L CAP "VIN 11447" REFERENCE MONUMENTS @ TOP OF CURB
- CO CURVE NUMBER
- LI3 CURVE NUMBER
- RI RADIAL LINE NUMBER
- TI8 LOT NUMBER - REMOVAL LOTS  
 COMMON ELEVATION  
 LOT AREA
- ⑦ BLOCK NUMBER
- S.F. SQUARE FEET
- P.U.E. PUBLIC UTILITY EASEMENT
- C.L.V. CITY OF LAS VEGAS
- CE COMMON ELEVATION
- PS PAVED
- MSA HOME OWNERS ASSOCIATION
- ▨ PUBLIC DRAINAGE EASEMENT TO BE MAINTAINED BY THE HOA
- ▨ CITY OF LAS VEGAS REFER EASEMENT TO BE MAINTAINED BY THE HOA

FOR CONTINUATION SEE SHEET 2

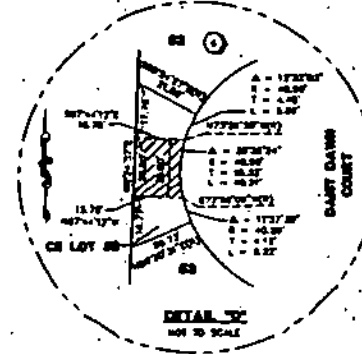
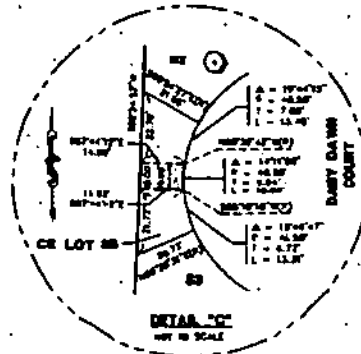


MONUMENT @ LONE MOUNTAIN - UNIT 4  
 BOOK 108, PAGE 30

FOUND BLUE BRASS CAP "1087"

## NOTE

1. ALL REAR LOT CORNERS SHALL BE SET WITH A BRASS AND BRASS IAN "VIN PL3 11447" ON BLOCK WALLS AND ALL FRONT OR SIDE LOT CORNERS ADDRESSING NORTH-OF-WAY SHALL BE MARKED BY THE S&P OUTLINE OF THE BACK OF CURBS ON THE PROLONGATION OF THE PROPERTY LINE.
  2. SEE SHEET 1 FOR CURVE, CURVE, RADIAL LINE TABLE.
  3. THE FOLLOWING ARE NON INTERIOR STREETS ARE PRIVATE STREET, PUBLIC UTILITY EASEMENTS (P.U.E.), CITY OF LAS VEGAS DRAINAGE EASEMENTS (TO BE MAINTAINED BY HOA) AND CITY OF LAS VEGAS REFER EASEMENTS.
- YELLOW HARBOR STREET  
 DAISY DAWN COURT**
4. PRIVATE LANDSCAPE EASEMENT TO BE MAINTAINED BY THE HOA & HEREBY GRANTED OVER ALL OF CE LOTS 2A, 2B, 2C, 2D AND 2E.



ACT	DATE	BY	REVISION

*File Copy*

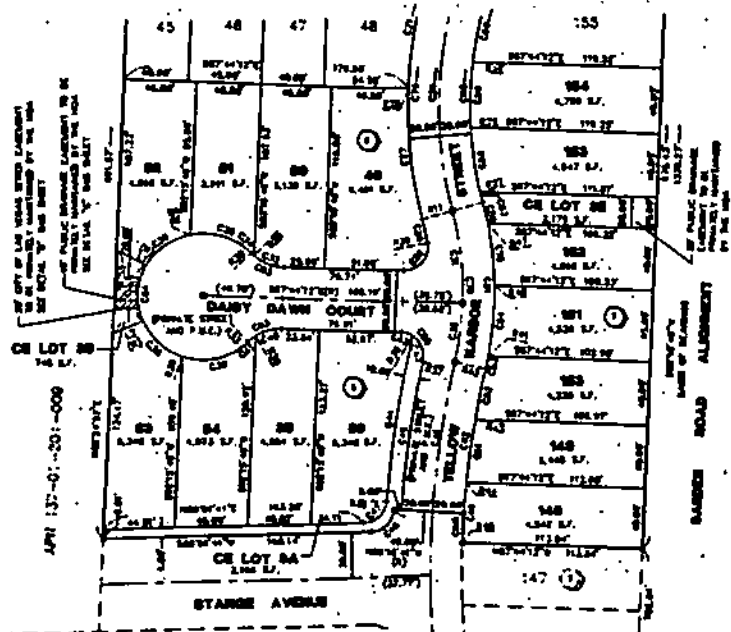
# MONUMENT @ LONE MOUNTAIN - UNIT 3

(A COMMON INTEREST COMMUNITY)  
 LOCATED WITHIN THE NORTHEAST QUARTER (NE 1/4) OF THE NORTHWEST QUARTER (NW 1/4)  
 AND THE SOUTHEAST QUARTER (SE 1/4) OF THE NORTHWEST QUARTER (NW 1/4) OF SECTION 1,  
 TOWNSHIP 20 SOUTH, RANGE 59 EAST, M.D.M., CITY OF LAS VEGAS, CLARK COUNTY, NEVADA

**LEGEND**

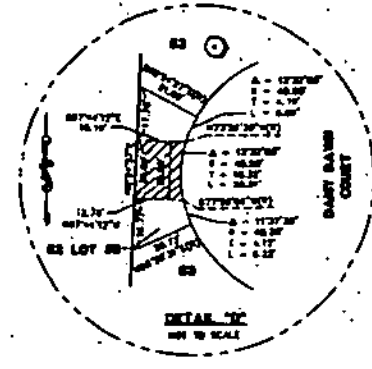
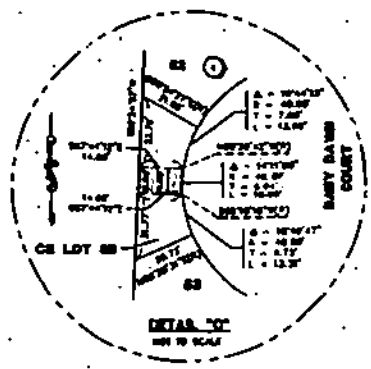
- BOUNDARY LINE
- LOT LINE
- PRIVATE STREET LINE
- PRIVATE STREET CENTERLINE
- EASEMENT LINE
- FOUND MONUMENT AS DESCRIBED
- H&S AND BRIDGE THE "1/4" FILE 12447, P. 27  
"MONUMENT @ LONE MOUNTAIN - UNIT 1"  
BOOK 106, PAGE 28
- SET 1/4" NEAR A 1/4" OF "1/4" FILE 11447  
"REFERENCE MEASUREMENTS IN REF. OF PLAN"
- CS CURVE NUMBER
- LS LINE NUMBER
- RL RADIAL LINE NUMBER
- TIS LOT NUMBER - TYPICAL LOTS = 44  
COMMON ELEMENT = 42
- ⑦ BLOCK NUMBER
- S.F. SQUARE FEET
- P.A.E. PUBLIC UTILITY EASEMENT
- CL.V. CITY OF LAS VEGAS
- CE COMMON ELEMENT
- RD. ROAD
- HOA HOME OWNERS ASSOCIATION
- Public drainage easement to be properly maintained by the HOA
- City of Las Vegas street easement to be properly maintained by the HOA

FOR CONTINUATION SEE SHEET 2



**NOTE**

1. ALL NEAR LOT CORNERS SHALL BE SET WITH A H&S AND BRIDGE THE "1/4" FILE 11447 OF BLOCK 28 AND ALL FRONT OR REAR CORNERS INCLUDING NORTH-SOUTH SHALL BE MARKED BY THE 1/4" CUTTING OF THE BACK OF CURBS ON THE PERIPHERY OF THE PROPERTY LOTS.
  2. SEE SHEET 1 FOR CURVE, CURVE, RADIAL, LINE TABLE.
  3. ALL PAVING OF NEW INTERIOR DRIVEWAYS AND PRIVATE STREETS, PUBLIC UTILITY EASEMENTS (P.A.E.), CITY OF LAS VEGAS STREET EASEMENTS (TO BE PROPERLY MAINTAINED) AND CITY OF LAS VEGAS OTHER EASEMENTS.
- YELLOW HARBOR STREET  
DAISY DAWN COURT**
1. PRIVATE LANDSCAPE EASEMENT TO BE MAINTAINED BY THE HOA & HOA SHALL BE MAINTAINED BY THE HOA.



NO.	DATE	BY	REVISION
1	1/1/2018	J.S.P.	REV. NEW CITY

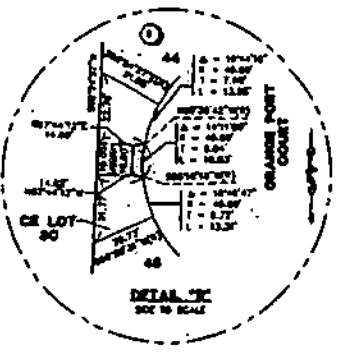
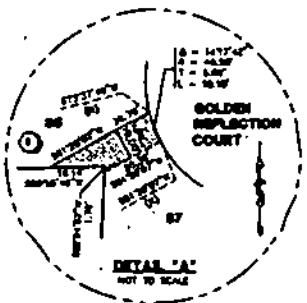
*File Copy*

# MONUMENT @ LONE MOUNTAIN - UNIT 3

(A COMMON INTEREST COMMUNITY)  
 LOCATED WITHIN THE NORTHEAST QUARTER (NE 1/4) OF THE NORTHWEST QUARTER (NW 1/4)  
 AND THE SOUTHEAST QUARTER (SE 1/4) OF THE NORTHWEST QUARTER (NW 1/4) OF SECTION 1,  
 TOWNSHIP 20 SOUTH, RANGE 50 EAST, M.D.M., CITY OF LAS VEGAS, CLARK COUNTY, NEVADA

## LEGEND

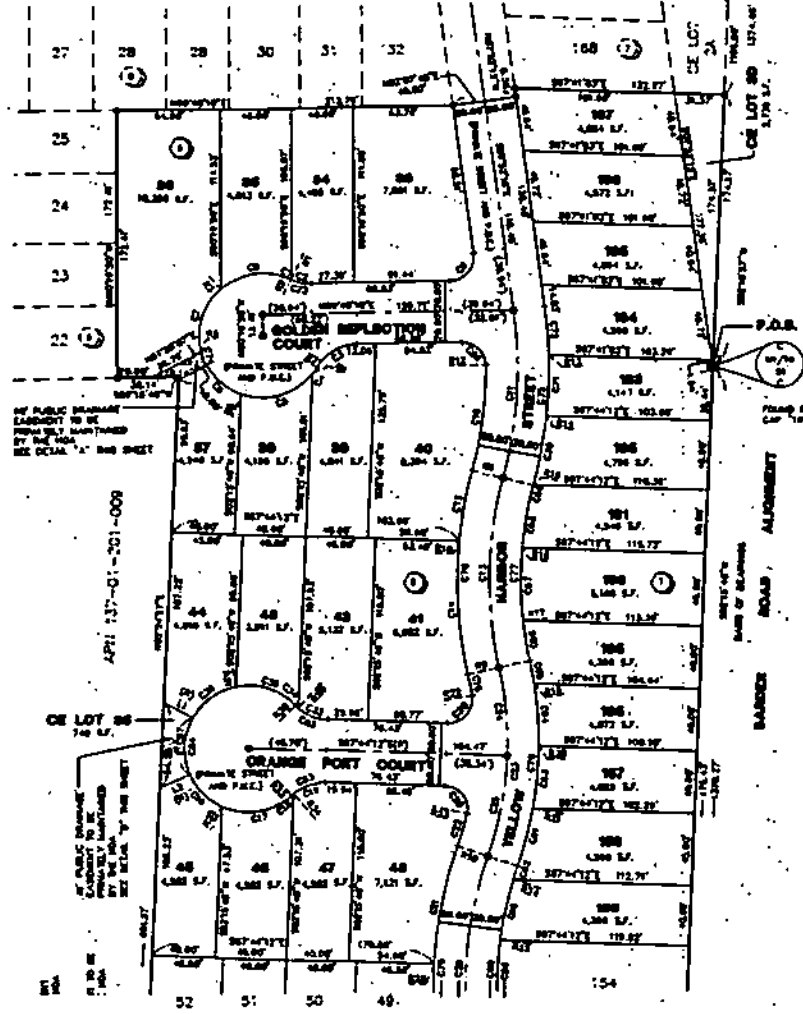
- |        |   |
|--------|---|
| P.O.B. | POINT OF BEGINNING  |
| ---    | BOUNDARY LINE   |
| ---    | LOT LINE  |
| ---    | PRIVATE STREET LINE   |
| ---    | PRIVATE STREET CENTERLINE   |
| ---    | EASEMENT LINE   |
| ⊙      | FOUND MONUMENT AS DESCRIBED   |
| ⊙      | NAIL AND BRASS TAG "VIN FILE 12447" FOR "MONUMENT @ LONE MOUNTAIN - UNIT 3" BOOK 101, PAGE 18 |
| ⊙      | SET 5/8" REBAR & ALL CAP "VIN FILE 12447" REFERENCE MONUMENTS IN TOP OF CURB                  |
| ⊙      | SET NAIL AND BRASS TAG "VIN FILE 12447"   |
| CS     | CURVE NUMBER  |
| LS     | CURVE NUMBER  |
| RL     | RADIAL LINE NUMBER  |
| TR     | LOT NUMBER - RESIDENTIAL LOTS = 44<br>COMMON ELEMENT LOTS = 1<br>TOTAL LOTS = 45              |
| ②      | BLOCK NUMBER  |
| S.P.   | SQUARE FOOT   |
| P.U.L. | PUBLIC UTILITY EASEMENT   |
| C.L.S. | CITY OF LAS VEGAS   |
| CE     | COMMON ELEMENT  |
| (S)    | SEWER   |
| HOA    | HOME OWNERS ASSOCIATION   |
|        | PUBLIC DRAINAGE EASEMENT TO BE MAINTAINED BY THE HOA  |



## NOTE

- ALL NEAR LOT CORNERS SHALL BE SET WITH A NAIL AND BRASS TAG "VIN FILE 12447" ON BLACK WALLS AND ALL FRONT OR SIDE LOT CORNER ADJOURNING "ROCK-OF-MOUNT" SHALL BE MARKED BY THE BAY OUTLINE OF THE BACK OF CURB ON THE PROLONGATION OF THE PROPERTY LINE.
  - SEE SHEET 4 FOR CURVE, CURVE RADIAL LINE TABLES.
  - THE FOLLOWING ARE SIDE OVERHANG STREETS AND PRIVATE STREETS, PUBLIC UTILITY EASEMENTS (P.U.L.), CITY OF LAS VEGAS DRAINAGE EASEMENTS (TO BE MAINTAINED BY THE CITY OF LAS VEGAS) AND OTHER EASEMENTS.
- YELLOW HARBOR STREET  
 GOLDEN REFLECTION COURT  
 ORANGE PORT COURT**
- \* PRIVATE LANDSCAPE EASEMENT TO BE MAINTAINED BY THE HOA IS HEREBY GRANTED OVER ALL OF DE LOTS 24, 26, 28, 30 AND 32.

MONUMENT @ LONE MOUNTAIN - UNIT 3  
 BOOK 101, PAGE 18



FOR CONTINUATION SEE SHEET 3

ACT	DATE	BY	REVISION
1	3/24/00	KAR	REV PER CITY, REV STREET NAMES

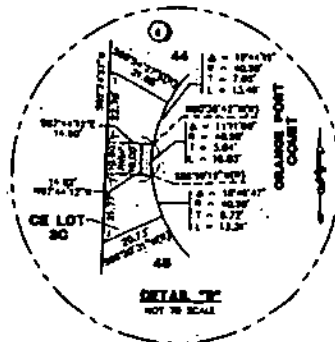
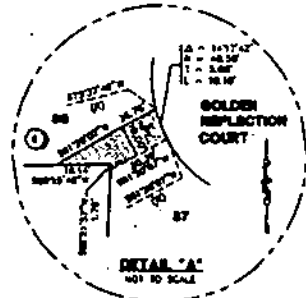
File Copy

# MONUMENT @ LONE MOUNTAIN - UNIT 3

(A COMMON INTEREST COMMUNITY)  
 LOCATED WITHIN THE NORTHEAST QUARTER (NE 1/4) OF THE NORTHWEST QUARTER (NW 1/4)  
 AND THE SOUTHEAST QUARTER (SE 1/4) OF THE NORTHWEST QUARTER (NW 1/4) OF SECTION 1,  
 TOWNSHIP 20 SOUTH, RANGE 59 EAST, M.D.M., CITY OF LAS VEGAS, CLARK COUNTY, NEVADA

## LEGEND

- P.O.B.** POINT OF BEGINNING
- BOUNDARY LINE
  - LOT LINE
  - PRIVATE STREET LINE
  - PRIVATE STREET CENTERLINE
  - - - EASEMENT LINE
- FOUND MONUMENT AS SHOWN
  - NAIL AND BRASS TAG "VIN PL3 1249" FOR "MONUMENT @ LONE MOUNTAIN - UNIT 3" BOOK 101, PAGE 18
  - SET 3/4" NAIL AND ALL CAP "VIN PL3 1144" & REFERENCE MONUMENTS IN TOP OF CURB
  - SET NAIL AND BRASS TAG "VIN PL3 1144"
  - 023 CURVE NUMBER
  - 033 CURVE NUMBER
  - 041 RADIAL LINE NUMBER
  - 178 LOT NUMBER - RESIDENTIAL LOTS = 44  
 COMMON ELEMENT LOTS = 8  
 TOTAL LOTS = 48
  - ⑦ BLOCK NUMBER
  - 67 SQUARE FEET
  - P.U.E. PUBLIC UTILITY EASEMENT
  - C.A.V. CITY OF LAS VEGAS
  - CE COMMON ELEMENT
  - (R) RADIAL
  - HOA HOME OWNERS ASSOCIATION
  - Public Reserve Easement to be privately maintained by the HOA

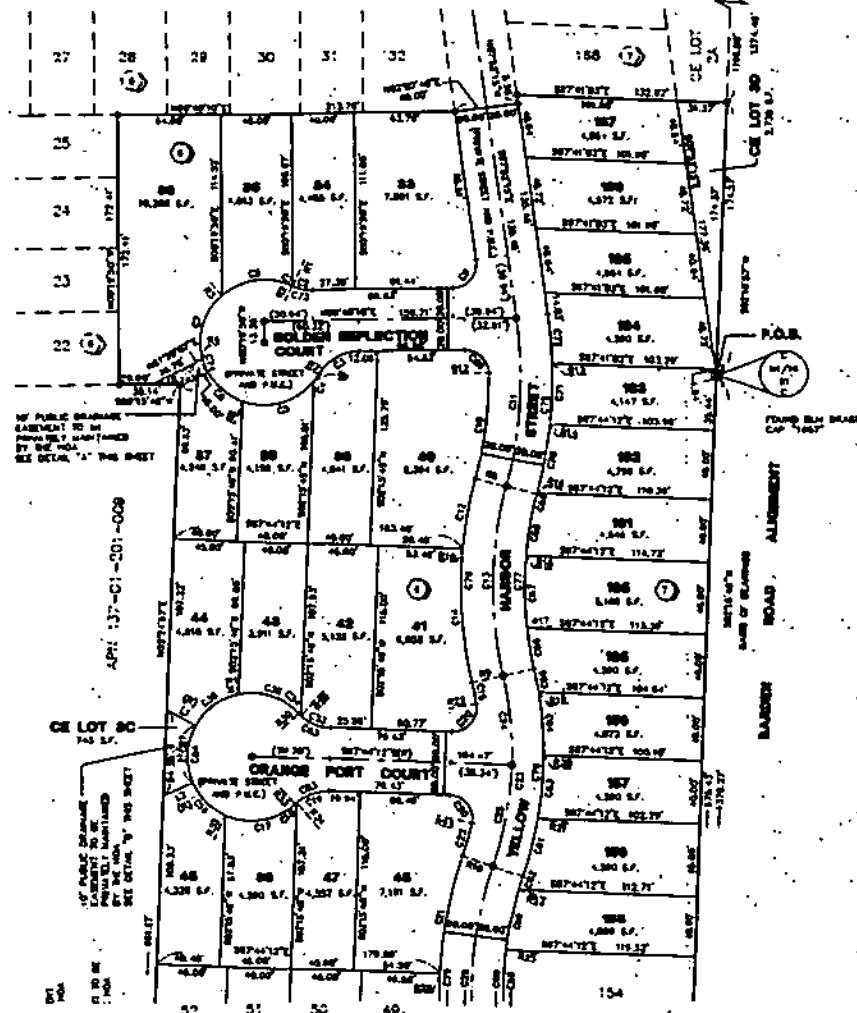


## NOTE

1. ALL REAR LOT CORNERS SHALL BE SET WITH A NAIL AND BRASS TAG "VIN PL3 1144" OR BLOCK WALLS AND ALL FRONT OR SIDE LOT CORNERS ALONGING RIGHT-OF-WAY SHALL BE MARKED BY THE SAME CORNER OF THE BACK OF CURB OR THE PROLONGATION OF THE PROPERTY LINE.
2. THE SHEET A FOR CURVE, CURVE, RADIAL LINE TABLE.
3. THE FOLLOWING SET SIDE INTERIOR STREETS ARE PRIVATE STREETS, PUBLIC UTILITY EASEMENTS (P.U.E.), CITY OF LAS VEGAS RESERVE EASEMENTS (TO BE PRIVATELY MAINTAINED) AND CITY OF LAS VEGAS RESERVE EASEMENTS.
4. A PRIVATE LANDSCAPE EASEMENT TO BE MAINTAINED BY THE HOA IS HEREBY GRANTED OVER ALL OF CE LOTS 24, 25, 26, 29 AND 30.

YELLOW HARBOR STREET  
 GOLDEN REFLECTION COURT  
 ORANGE PORT COURT

MONUMENT @ LONE MOUNTAIN - UNIT 2  
 BOOK 101, PAGE 18



GRAPHIC SCALE



FOR CONTINUATION SEE SHEET 3

N.O. 5630-3  
 SHEET 2 OF 4  
 NAD

ACT	DATE	BY	REVISION