

COTTONWOOD TERRACE PHASE 1

Recorded in Book 89 Page 31 of Plats

200 Scale Map Location: K-36-8

Fire Dept. District Map # 2414:77,78,87,88

MASTER SITE ADDRESS: 10250 PARK RUN DR

BLOCK 1	LOT	10	10225	JUNIPER CREEK LN	EW	PRIVATE STREET
		11	10223			
		12	10221			
		13	10217			
		14	10215			
		15	10213			
		16	10209			
		17	10207			
		18	10205			
BLOCK 2	LOT	125	10225	BIRCH BLUFF LN	EW	PRIVATE STREET
		126	10223			
		127	10221			
		128	10217			
		129	10215			
		130	10213			
		131	10211			
		132	10209			
		133	10207			
		134	10205			
		135	10203			
		136	10201			
		137	10195			
		138	10193			
		139	10191			
		140	10187			
		141	10185			
142	10183					
143	10179					
144	10177					
BLOCK 2	LOT	145	817	MAJESTIC OAK ST	N/S	PRIVATE STREET
		146	819			
		147	821			
		148	825			
		149	827			
		150	829			
		151	833			
		152	835			
		153	837			
BLOCK 2	LOT	154	10174	JUNIPER CREEK LN	EW	PRIVATE STREET
		155	10176			
		156	10178			
		157	10182			
		158	10184			
		159	10186			
		160	10190			
161	10192					

COTTONWOOD TERRACE PHASE 1

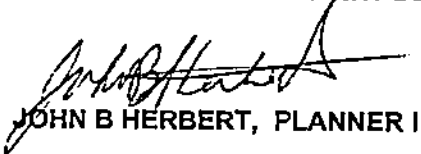
BLOCK 2	LOT	162	10194	JUNIPER CREEK LN	E/W	PRIVATE STREET
		163	10200			
		164	10202			
		165	10204			
		166	10208			
		167	10210			
		168	10212			
		169	10216			
		170	10218			
		171	10220			
BLOCK 3	LOT	19	905	MAJESTIC OAK ST	N/S	PRIVATE STREET
		20	907			
		21	909			
		22	913			
		23	915			
		24	917			
		25	919			
		26	921			
		27	920			
		28	918			
		29	916			
		30	912			
		31	910			
		32	908			
		33	904			
		34	902			
		35	900			
		36	840			
		37	838			
		38	836			
		39	832			
		40	830			
		41	828			
		42	824			
		43	822			
		44	820			
		45	816			
		46	814			
		47	812			
BLOCK 3	LOT	48	10152	BIRCH BLUFF LN	E/W	PRIVATE STREET
		49	10154			
		50	10156			
		51	10160			
		52	10162			
		53	10164			
		54	10168			
		55	10170			
		56	10172			
		57	10176			
		58	10178			
		59	10180			
		60	10184			
		61	10186			
		62	10188			

COTTONWOOD TERRACE PHASE 1

BLOCK 3	LOT	63	10192	BIRCH BLUFF LN	E/W	PRIVATE STREET
		64	10194			
		65	10196			
		66	10202			
		67	10204			
		68	10206			
		69	10208			
		70	10210			
		71	10212			
		72	10216			
		73	10218			
		74	10220			
		75	10224			
		76	10226			
Common Area	A	910	INDIGO DR	N/S	PRIVATE STREET	
	B	906				
	C	911				
	F	902				
Common Area	G	903	SUMAC SPRINGS ST	N/S	PRIVATE STREET	
Common Area	H	10181	JUNIPER CREEK LN	E/W	PRIVATE STREET	
	I	10203				
Common Area	J	10165	BIRCH BLUFF LN	E/W	PRIVATE STREET	

ORIGINAL DATE: 4/08/1999

CITY OF LAS VEGAS
PLANNING & DEVELOPMENT DEPARTMENT



JOHN B HERBERT, PLANNER I

file copy

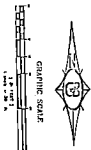
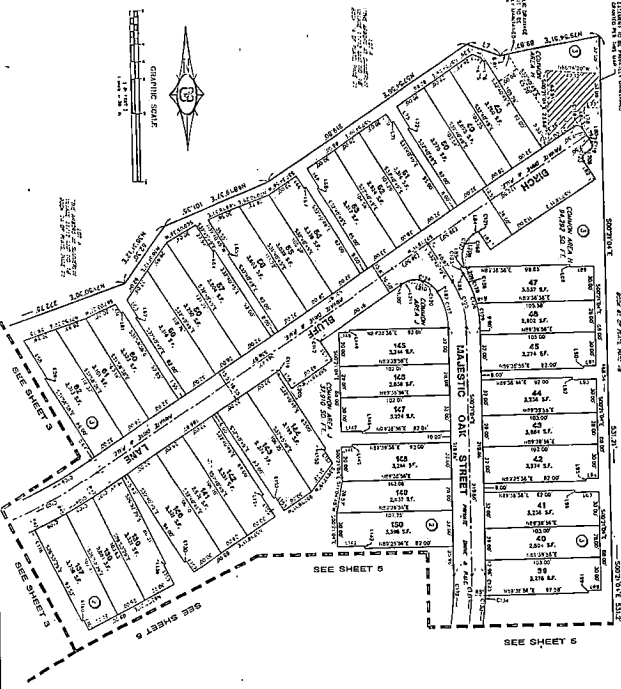
COTTONWOOD TERRACE - PHASE 1

ALL OF LOT FOUR (4) AND A PORTION OF LOT FIVE (5), BLOCK C, AS SHOWN ON THAT CERTAIN FINAL MAP OF "SHAMBERN VILLAGE 12 - THE ARBORIS PARCEL, A.V. IN BOOK 81 OF PLATS, PAGE 28, REFERRED TO HEREIN AS "BOOK 88 OF PLATS, PAGE 28, LONG RANGE SECTION 36, RANGE 59 EAST, TOWNSHIP 12 NORTH, COUNTY, NEVADA, CITY OF LAS VEGAS, CLARK COUNTY, NEVADA."

THIS MAP AND THESE INSTRUMENTS SHALL BE CONSIDERED VALID AND CORRECTLY RECORDED.

DATE OF FIRST SALE: 8/11/88

BOOK 88 OF PLATS, PAGE 28



THE AREA OF THIS MAP IS THE SAME AS THE AREA OF THE MAP RECORDED IN BOOK 88 OF PLATS, PAGE 28.

COUNTY RECORDING INFORMATION	
FOR A COMPLETE LISTING OF THE INSTRUMENTS RECORDED IN THIS COUNTY, VISIT THE WEBSITE: www.clarkcountynv.gov	
FOR A COMPLETE LISTING OF THE INSTRUMENTS RECORDED IN THIS COUNTY, VISIT THE WEBSITE: www.clarkcountynv.gov	
DATE	4
TIME	6

- NOTES**
1. ALL LOTS ARE TO BE CONVEYED TO THE BUYER BY THE SELLER.
 2. THE SELLER WARRANTS THAT THE LOTS ARE FREE OF ALL ENCUMBRANCES, UNLESS OTHERWISE SHOWN ON THIS MAP.
 3. THE SELLER WARRANTS THAT THE LOTS ARE FREE OF ALL ENCUMBRANCES, UNLESS OTHERWISE SHOWN ON THIS MAP.
 4. THE SELLER WARRANTS THAT THE LOTS ARE FREE OF ALL ENCUMBRANCES, UNLESS OTHERWISE SHOWN ON THIS MAP.
 5. THE SELLER WARRANTS THAT THE LOTS ARE FREE OF ALL ENCUMBRANCES, UNLESS OTHERWISE SHOWN ON THIS MAP.
 6. THE SELLER WARRANTS THAT THE LOTS ARE FREE OF ALL ENCUMBRANCES, UNLESS OTHERWISE SHOWN ON THIS MAP.
 7. THE SELLER WARRANTS THAT THE LOTS ARE FREE OF ALL ENCUMBRANCES, UNLESS OTHERWISE SHOWN ON THIS MAP.
 8. THE SELLER WARRANTS THAT THE LOTS ARE FREE OF ALL ENCUMBRANCES, UNLESS OTHERWISE SHOWN ON THIS MAP.
 9. THE SELLER WARRANTS THAT THE LOTS ARE FREE OF ALL ENCUMBRANCES, UNLESS OTHERWISE SHOWN ON THIS MAP.
 10. THE SELLER WARRANTS THAT THE LOTS ARE FREE OF ALL ENCUMBRANCES, UNLESS OTHERWISE SHOWN ON THIS MAP.

Printed by [unclear]

